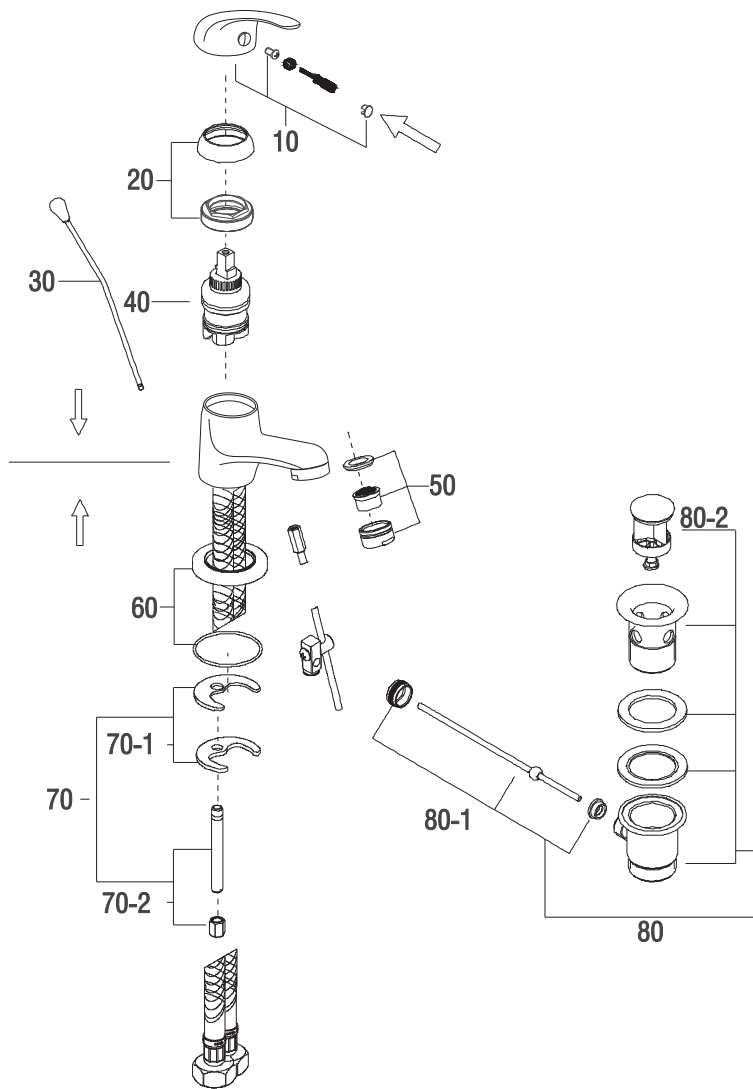
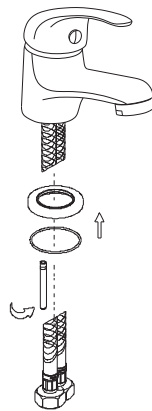


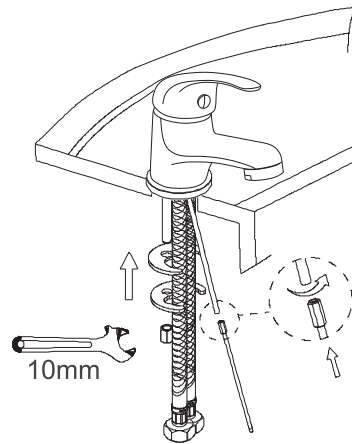
3073962



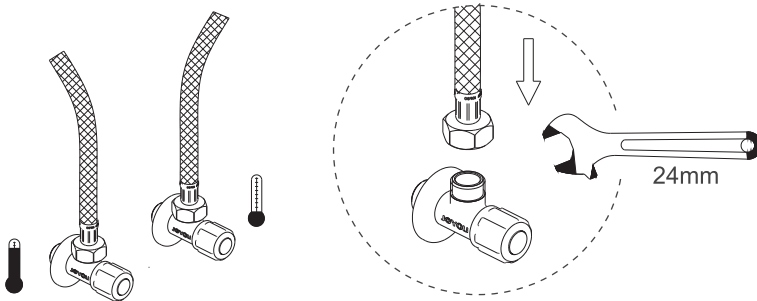
**1** Fix the base,O ring,screw inlet flexible hose.



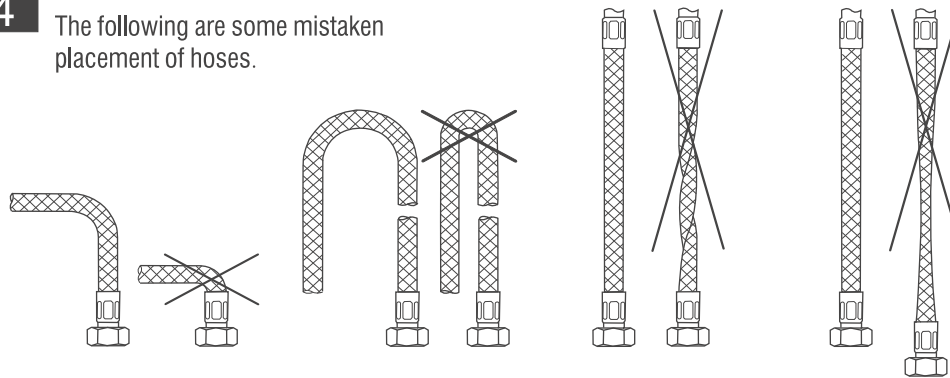
**2** Fix the faucet on the basin, then connect the extension rod.



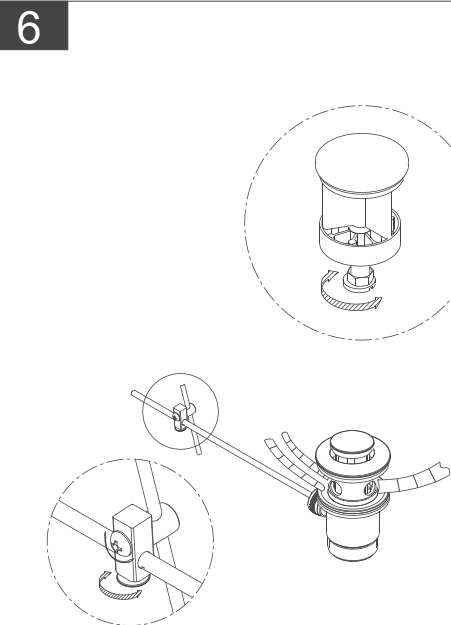
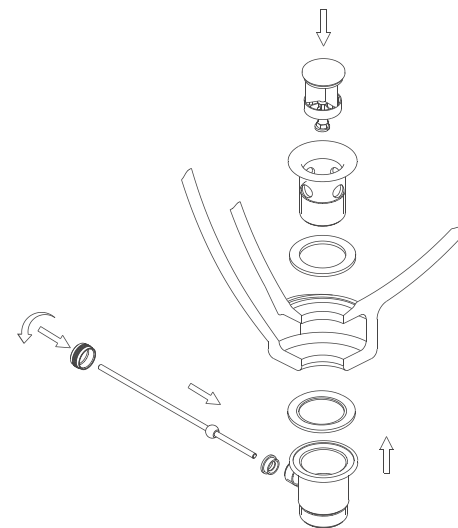
**3** Connect the inlet flexible hose and angle valve.



**4** The following are some mistaken placement of hoses.



**5** Assemble the pop-up waste over the basin.



**7** 1.Open the angle valve  
2.Remove the aerator  
3.Open the faucet and keep the water flowing for 30 sec ,clean the sundries and then fix the filter:

