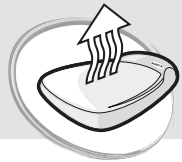
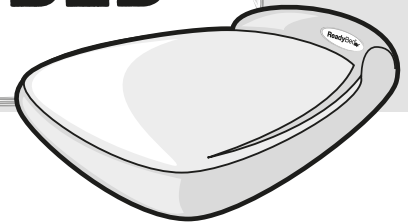
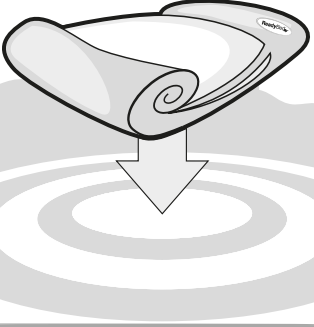


CAMPING BED



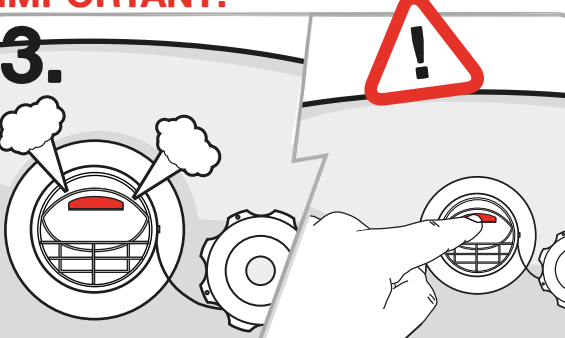
INFLATION



1. 


Ensure the floor **area is clear & free from objects**. Lay the bed out **flat** on the floor.

IMPORTANT!

3. 

Before inflating ensure the internal flap on the **valve is closed**. If the flap is open then just simply flip it closed using the red tab. Ensure the inner PVC lining is not obstructing the valve by pushing it out of the way.

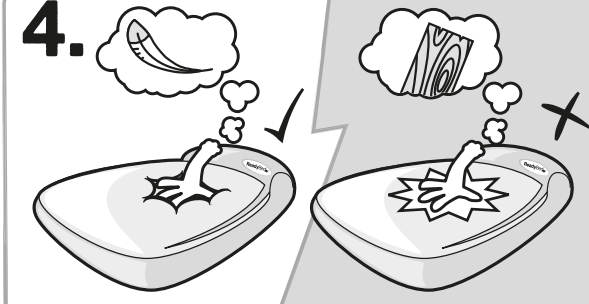
IMPORTANT!

5. 

When not in use deflate and store in the bag, for temporary storage keep upright against a wall and out of children's way.

2. 

Your bed can be inflated using the types of pump shown here. **Included** is a pump adaptor if required.

4. 

A comfortable sleep can be attained by slightly under inflating the bed. A firm mattress could lead to less comfortable sleep.



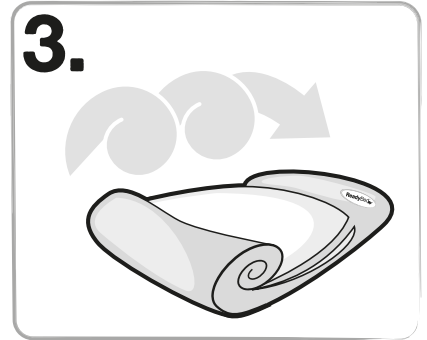
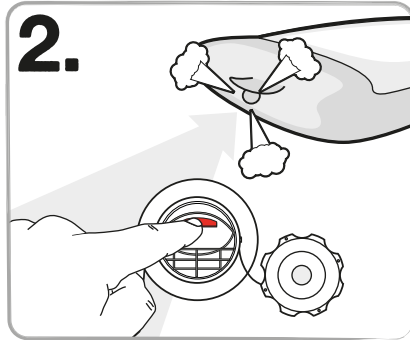
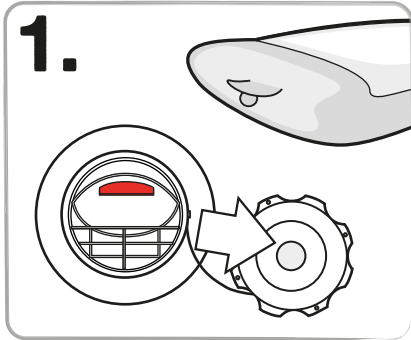
WARNING Over inflation could cause damage to the mattress seams

WARNING Do not stand or jump on the bed





DEFLATION



Open the valve cover (1.) and push open the internal flap until it remains open (2.). The bed can be rolled from the foot end to expel the air (3.). When completely deflated, close the internal flap and replace the valve cover. The mattress can remain inside the cover for storage.

WASHING INSTRUCTIONS



(Important: If item does not have free movement in washing machine, use large capacity commercial machine)

1. Remove inflatable base before washing.
2. Wipe base clean with a damp cloth, if necessary.
3. Wash Ready Bed® according to instructions on the washing label.
4. Do not tumble dry.

WARNING

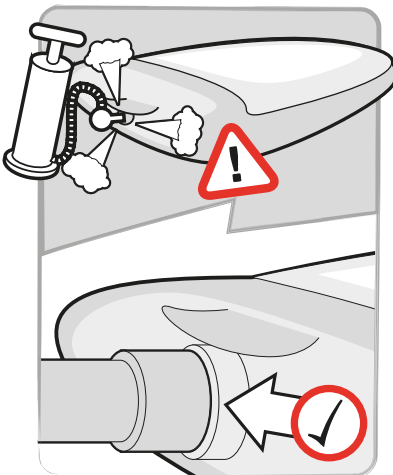


- **Warning!** Keep away from fire.
- Do not place near fires or other sources of heat e.g. radiators, open & electric fires.
- Adult inflation / deflation required.
- Do not use in water.
- **CAUTION!** The mattress is not a life saving device.
- Retain packaging and instructions for future reference.



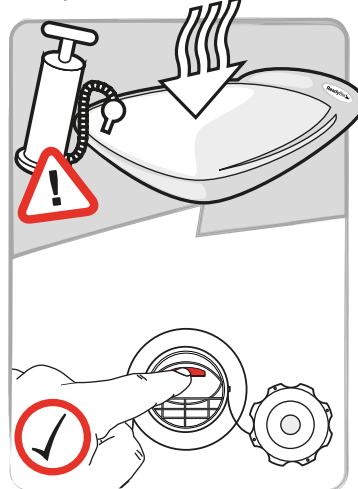
TROUBLE SHOOTING

The air is escaping **whilst** inflating the mattress.



To ensure air tight fit, use supplied adaptor (if required).

The mattress is deflating **soon after** I have completed inflation.



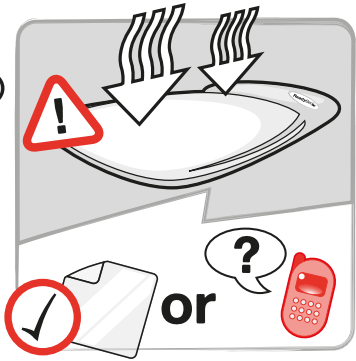
Before inflating ensure the internal flap on the valve is closed. If the flap is open then just simply flip it closed using the red tab.

The mattress seems to deflate slightly **after** some time.



As the air inside the mattress cools to room temperature the pressure will drop inside the mattress, making it seem like the mattress has a puncture. The mattress will require regular top ups of air due to changes in temperature.

The mattress is deflating **completely**.



Remove the mattress from the cover and inflate the mattress again to check for any obvious punctures. Use the supplied repair patch to repair the puncture.

Unable to fix the puncture? then call our Customer Care (details below...)

problem?

solution!

MORE HELP OR REPLACEMENT MATTRESS

Did you know the nice people at Worlds Apart can provide a replacement mattress or repair patch for you.

Call **Customer Care** on 0800 389 8591
email customercare@worldsapart.com

