

After installation

If required a frame surround (not supplied) can be fitted onto the ceiling to conceal the edges of the Loft surround/trapdoor opening.

The ladder and all other wooden parts can be varnished to protect and extend its life.

Lubricate all moving metal parts annually. Screws and nuts should be checked from time to time and tightened when necessary.

Customer Helpline No. 01773 525710

Replacement spare parts are available to order online at www.abru.co.uk or over the phone on 01773 525762



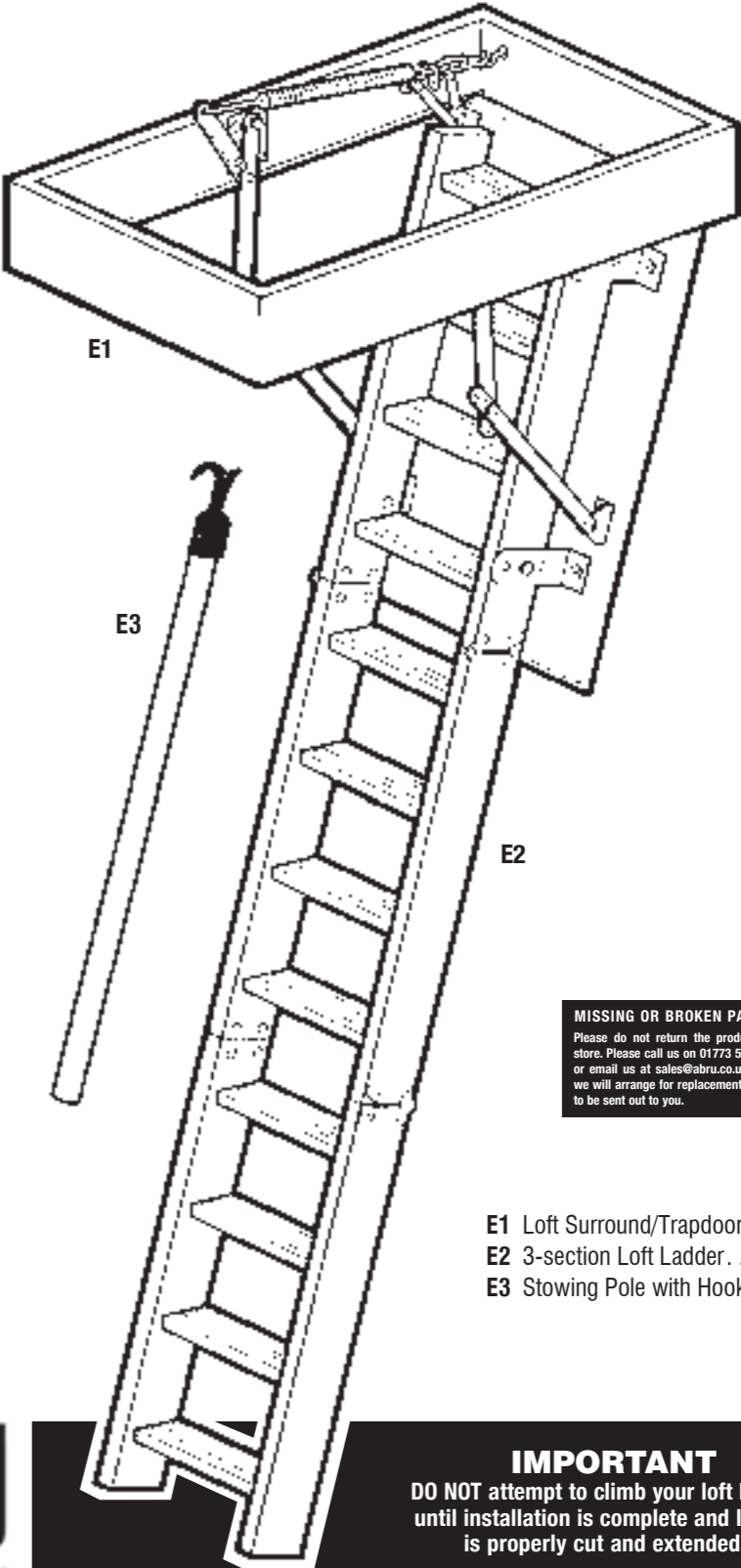
Abru Ltd, Derwentside Industrial Park,
Derby Road, Derbyshire, England DE56 1WE
Tel: (01773) 525700



Timber Professional Complete
Loft Access Kit

Installation and Operating Instructions
Read Carefully Before Installation

Please check you have all components listed (tick boxes)



MISSING OR BROKEN PARTS
Please do not return the product to store. Please call us on 01773 525762 or email us at sales@abru.co.uk and we will arrange for replacement parts to be sent out to you.

- E1 Loft Surround/Trapdoor . . . x1 ☐
- E2 3-section Loft Ladder x1 ☐
- E3 Stowing Pole with Hook . . . x1 ☐

IMPORTANT
DO NOT attempt to climb your loft ladder until installation is complete and ladder is properly cut and extended.



Safety Instructions

Before commencing the installation or operation of this product, read these instructions carefully and completely, noting in particular the instructions regarding safety (below).

The Werner Timber Professional Complete Loft access kit' is perfectly safe when correctly installed and will support a weight of up to 150 Kgs. (23.6 st.). Please observe the following safety procedures:

- Do not attempt to climb your Abru loft ladder until installation is complete. Use a second ladder to gain access to the loft while carrying out the work. Ensure that this is stable.
- If in any doubt when building the loft opening 'frame', seek expert advice or use a suitably qualified joiner or builder.
- During installation and operation, follow all instructions step by step to ensure your safety and the optimum performance of the loft ladder.
- Observe normal safety precautions when working in the loft space. Place weight only on the main ceiling joists. Do not drill above head height. Avoid contact with electrical wiring and service pipes.
- Ensure someone else is on the premises and knows where you are in case of an accident.
- Do not modify any component supplied with this product or substitute any loft ladder component with anything other than genuine Werner replacement parts.
- When installation is complete and before using the ladder, make sure that it is pulled fully down and that both feet are resting firmly on the floor.

Minimum space requirements:

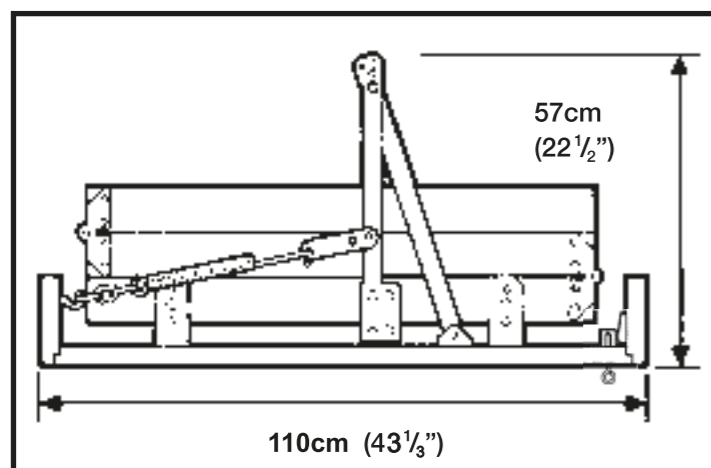
When stowed, the ladder will occupy a space approximately 110cm (43.1/3") x 54cm (21.1/4") and in the loft a height of 57cm (22.1/2") (The actual size may vary slightly so please check your product). Ensure that the ladder is not obstructed by items stowed in the loft.

Tools required:

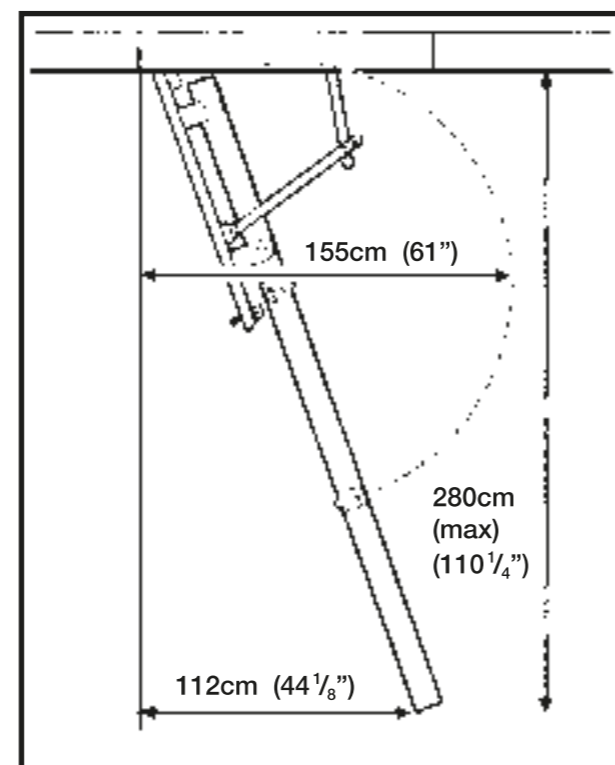
- Stepladder ● Pencil ● Workbench ● Bradawl ● Fine Tooth Saw ● Drill and 2mm bit ● Crosshead Screwdriver: No's. 1&2 ● 13mm spanners ● Tape measure/ruler ● Lever to prise off any support battens
- Straight 1 metre length of wood ● 8 Strong screws (minimum 35mm long) ● 2 Wooden Planks 80cm long

If any components are missing, please contact the Abru Sales Dept..Tel: 01773 525730

Stowed Requirements

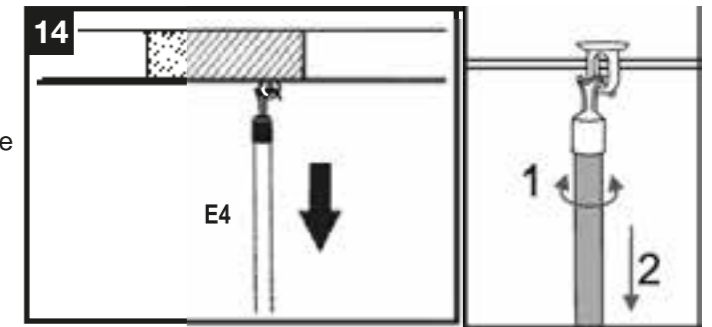


Deployed Requirements

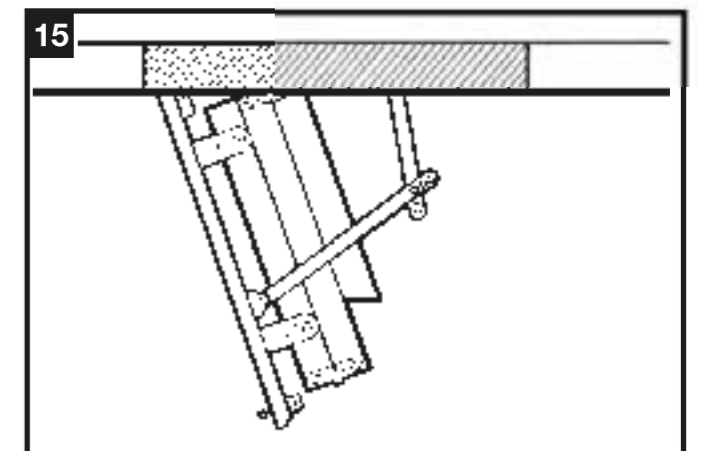


Operating Loft Ladder

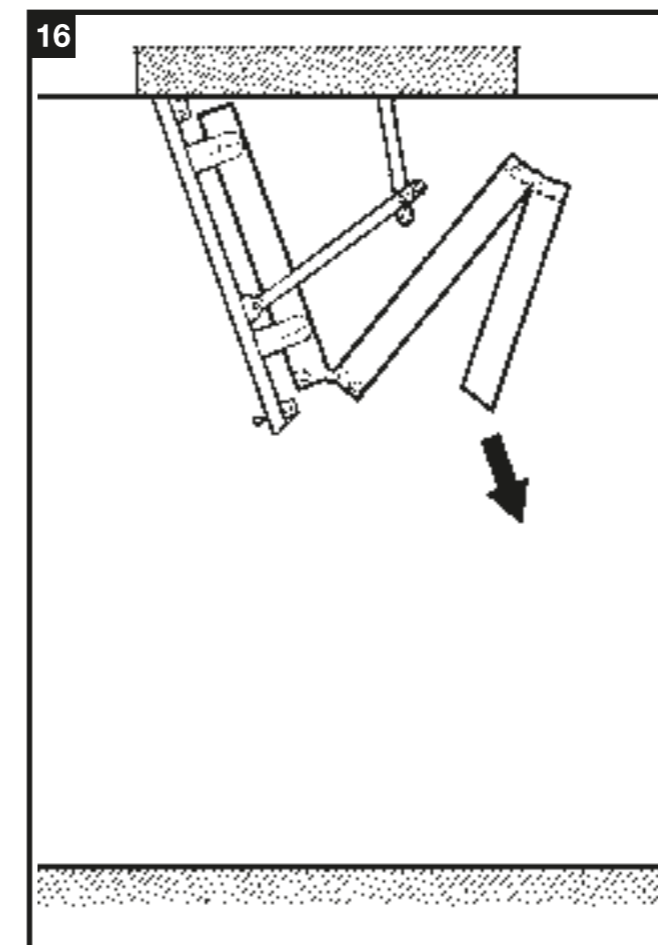
- 14** Engage the stowing pole hook within the hook bolt and rotate fully (approximately 45 degrees) either clockwise or anti-clockwise to release the catch and allow the trapdoor to partially open.



- 15** Pull the trapdoor fully down until it can go no further and 'locks' into position.



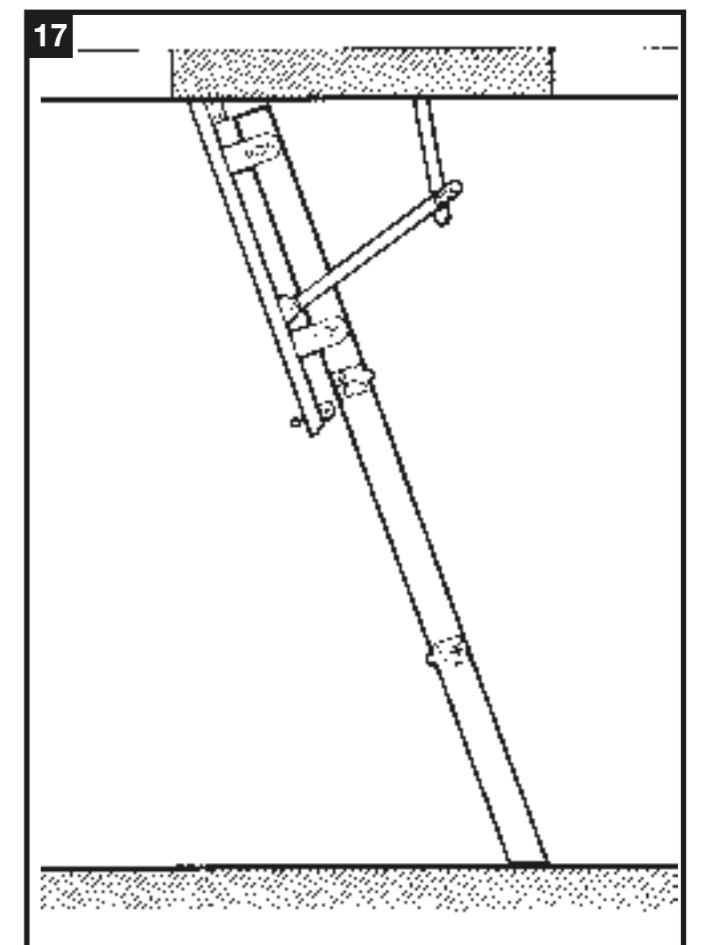
- 16** Take hold of the bottom of the top ladder section and carefully lower down.



- 17** When fully extended ensure the feet of the ladder are firmly on the floor.

Always face the ladder when climbing up or down and always hold onto the ladder sides with at least one hand.

To stow the ladder, repeat steps 15-17 in reverse.



Ladder Height Adjustment

10 Reducing Height less than 2.77 metres

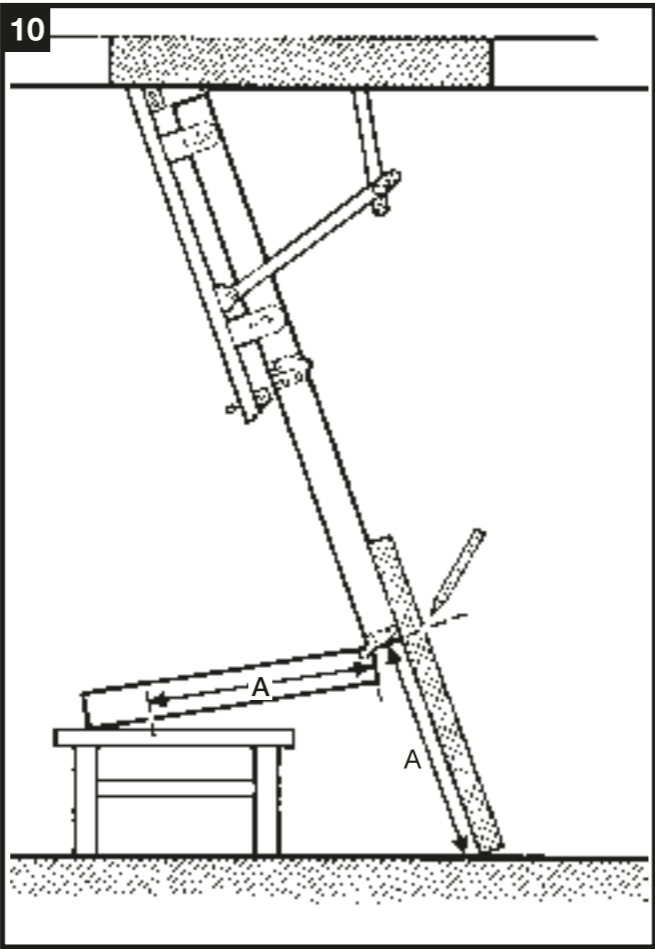
Lower the ladder as described in steps 14-16. Fold the bottom section underneath and rest it on a 'workbench'. Use a straight length of wood to rest on the front edge of the side rails of the ladder (study diagram). Measure the distance from the bottom end of the middle section of the ladder to the floor (A). Mark this measurement onto the front edge of the side rail of the bottom section of ladder (A).

11 Place the length of wood onto the side of the side rail, running level with the back edge. Measure the distance (B). Mark this measurement onto the back edge of the side rail of the bottom section of ladder (B).

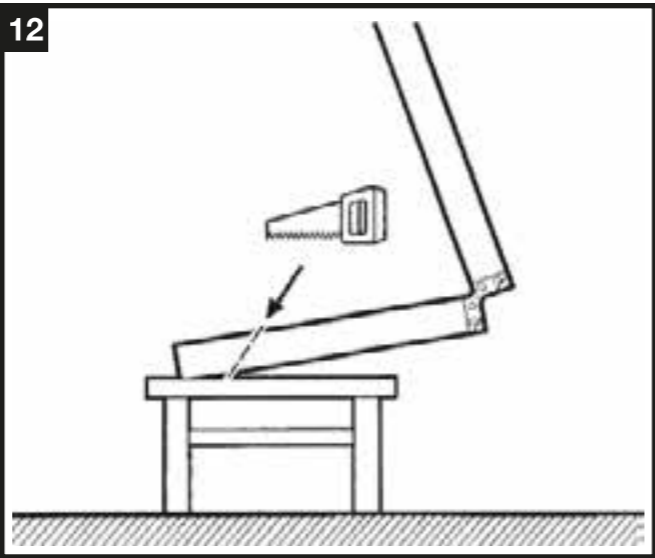
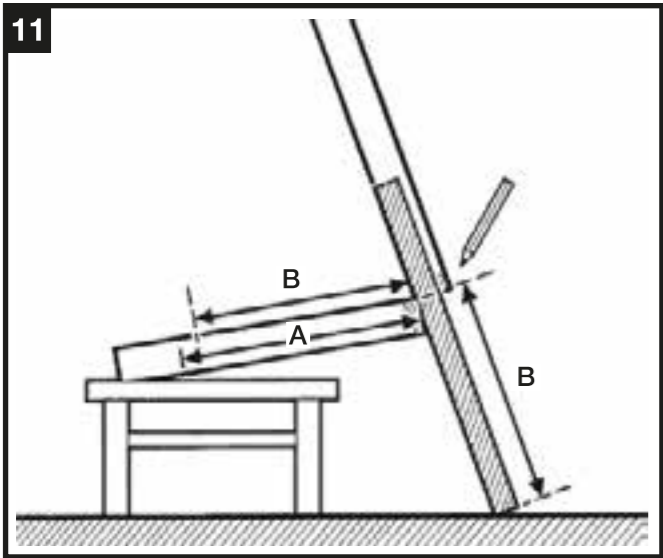
Repeat with the other ladder side rail in case the floor is uneven.

12 Draw a line between the marked distances (A & B) onto the sides of the third section of ladder and cut with a fine tooth saw (remove any rough edged with sand paper).

If the intended cut falls level with a ladder tread it will be necessary to move the adjustment nuts and bolts to either the 1st or 2nd holes - see step 13. However, the amount of adjustment is only 3cm.



Be very careful not to cut the ladder too short



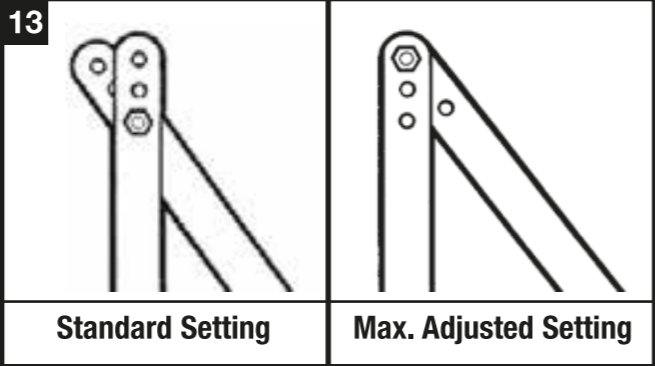
13 Minor Height Adjustment (3cm)

A minor height adjustment (extension) can be made by moving the adjustment nuts and bolts to the 1st or 2nd holes on the trapdoor stays.

WARNING!

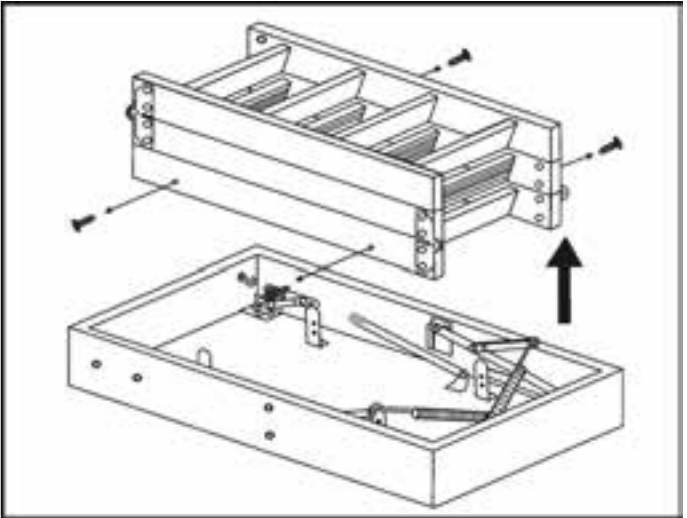
Extreme Spring Tension

Removal of the adjustment nuts and bolts must only be carried out one at a time and only when the ladder is fully stowed and the trapdoor is locked closed.



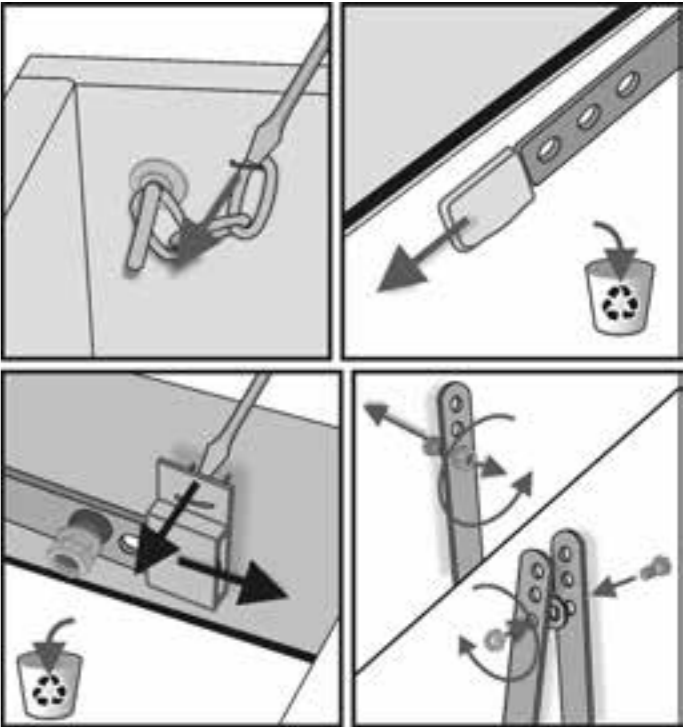
Removing Ladder from Trapdoor

1 Separate the ladder section (E2) from the trapdoor by removing the 4 nuts and screws that secure the ladder to the L-shaped brackets (keep these nuts and screws to re-use later). Lift off the ladder section leaving the L-shaped brackets secured to the trapdoor. Lift out the stowing pole (E4) and packing material.

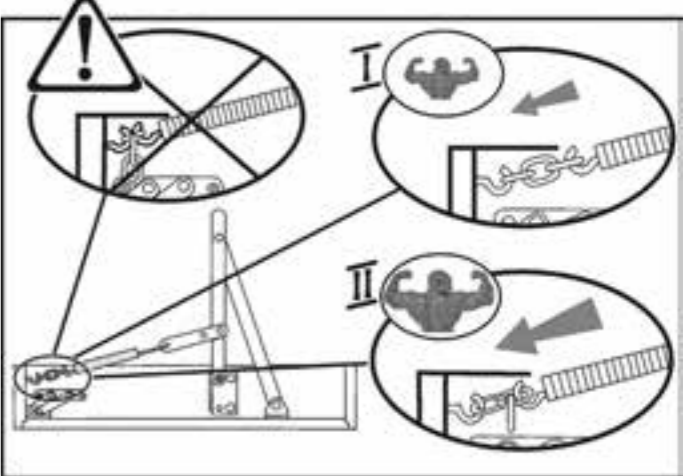
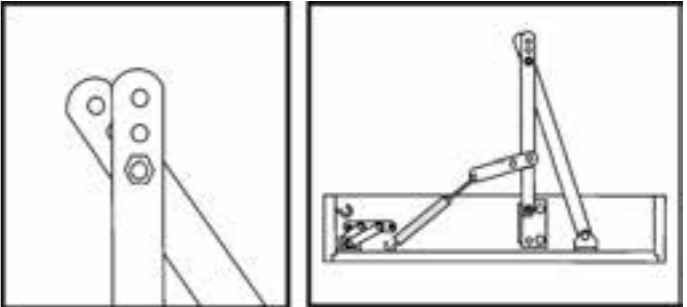


Attaching Spring Assembly

2 Separate the springs from each other, but leave them connected to the short stays. Remove plastic transit clamps to release all four trapdoor stays and discard clamps. Lift both sets of trapdoor stays to the vertical position and join together at the 3rd hole down - as shown, using the attached bolts and nuts. Tighten both bolts and nuts until each pair of stays can still just rotate.



3 Remove the two staples to release both sets of chain links from the loft surround frame. Connect the free ends of the chain links onto the ends of the springs (onto the 3rd link for light tension, 2nd link for heavy tension).

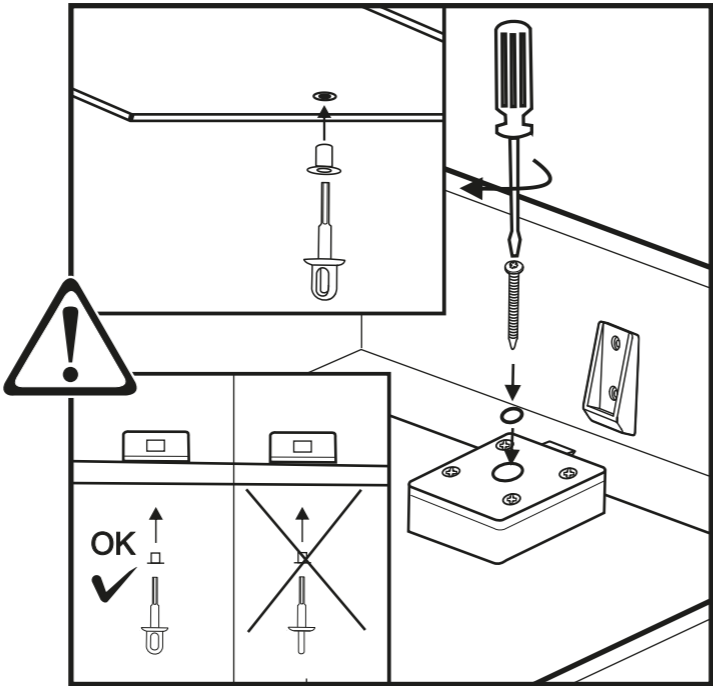
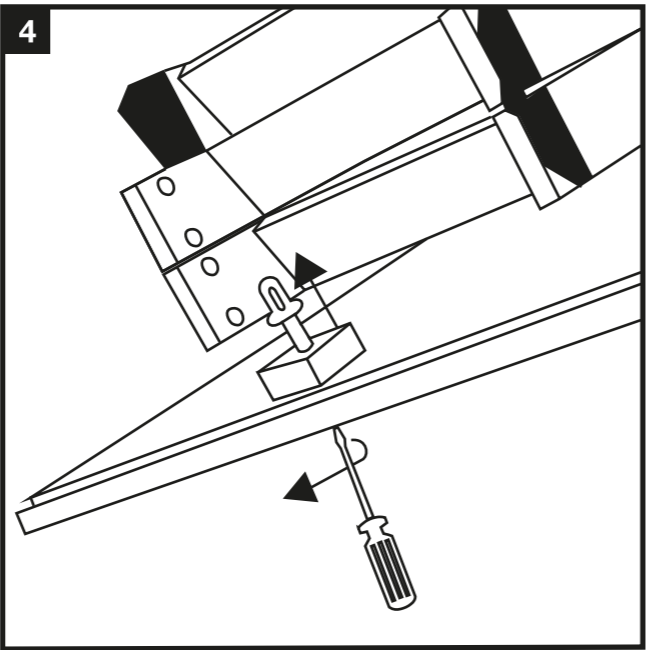


Fitting Collar and Hook Bolt

4 Loosen and remove hook bolt screw/washer from the underside of the trapdoor and pull hook bolt (B1) complete with collar (B2) from top of trapdoor catch.

Pass hook bolt through hole on underside of trapdoor and locate collar in trapdoor and square within catch such that the 'hook' is parallel with the lower edge of the trapdoor.

Secure the hook bolt with the screw/washer taking care not to over-tighten. Slacken screw 1/4 turn if hook bolt does not fully rotate/spring return.

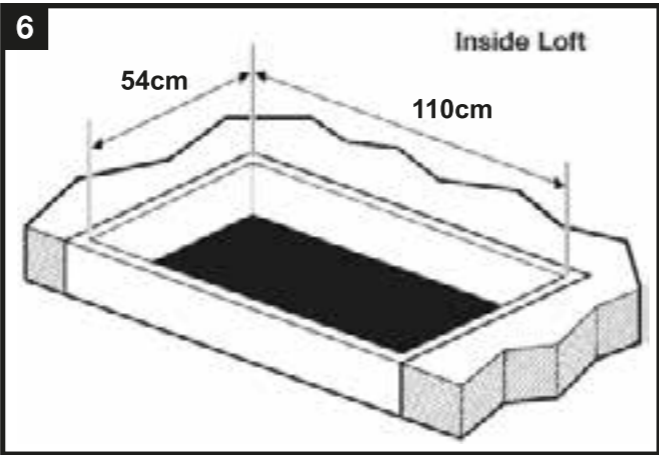


Making Loft Opening 'Frame'

6 An opening 110cm x 54cm needs to be built in the ceiling to fit the loft surround/trapdoor (E1) into. Check that the loft surround/trapdoor will fit with-in these measurements.

If you are in any doubt at all about creating this size opening we strongly recommend you seek professional advice or employ the services of a professional joiner or builder.

IMPORTANT: The opening frame must not be distorted (must be 90 degrees at corners).



Fitting Loft surround/Trapdoor

7 Two people are needed for the next three steps and you must ensure you have the following items in the loft before starting:

Loft surround/trapdoor, 4 nuts and screws (to re-attach ladder section) removed in step 1, 8 fixing screws (not supplied), screwdriver, spanner.

Before taking the loft surround/trapdoor into the loft, it is best to drill the fixing holes. Drill ONE pilot hole in each short side and THREE pilot holes in each long side (all centrally positioned). Use a 2mm drill bit.

To support the loft surround/trapdoor while it is being fixed to the loft opening 'frame', fix 2 support planks to the underside of the opening. Someone else will have to do this while you are in the loft.

Lower the loft surround/trapdoor into the loft opening 'frame'. Ensure it is the correct way around and resting on the support planks.

8 Once the loft surround/trapdoor is in position, fix it to the outer 'frame' at the positions drilled in the last step. Fix using 8 screws (not supplied).

9 Re-attach the ladder section (separated previously in step 1) to the L-shaped brackets, ensuring the ladder section is the correct way round and that the (previously removed) screws pass through the uppermost of the holes in the brackets such that the ladder section is raised above the trapdoor. Secure with the 4 previously removed nuts. The support planks fitted earlier should now be removed.

At this stage do not use the loft ladder – use a separate ladder to exit the loft.

WARNING!
DO NOT rest your weight on the trap door when inserting the screws.

