



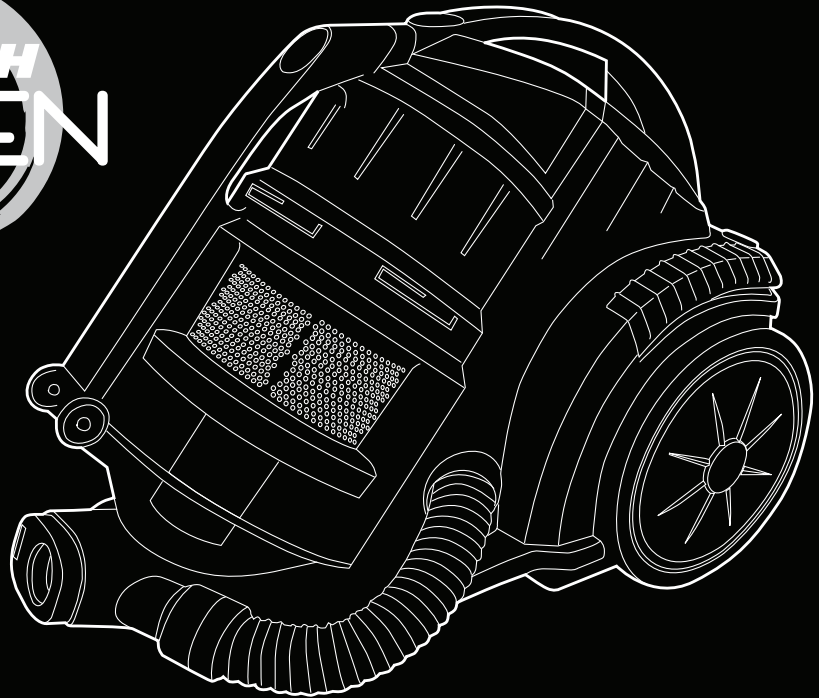
we  clean

User Guide



Vax Careline 0870 606 1248

Bagless Cylinder



Get Cleaning...

What's your Vax's model number?

C 9 1 - M Z - - -

What's your serial number? (Located on the base of the machine)

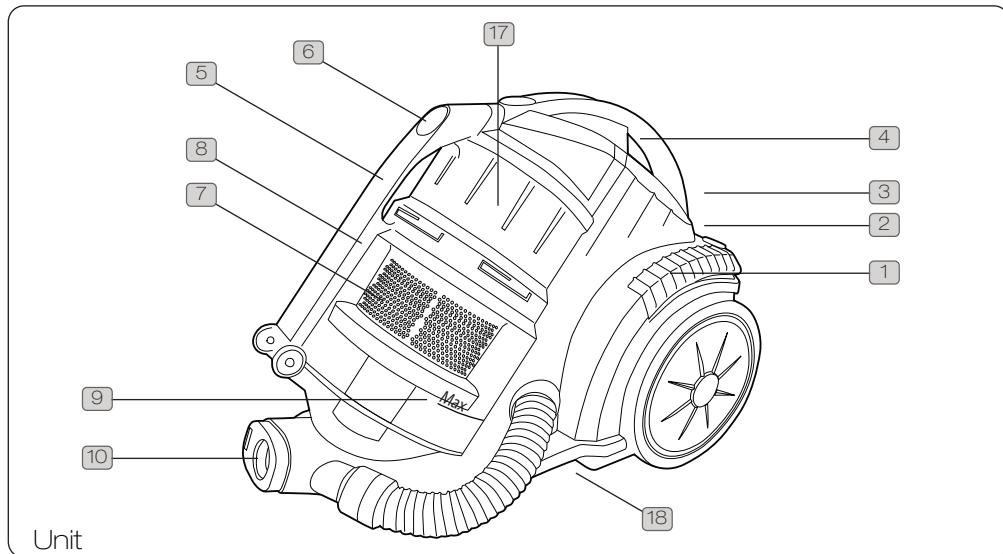
- - - - - - - - - - - - - - - - - -

Note these down in case you need them in future. Please keep instructions for further use.

vax.co.uk

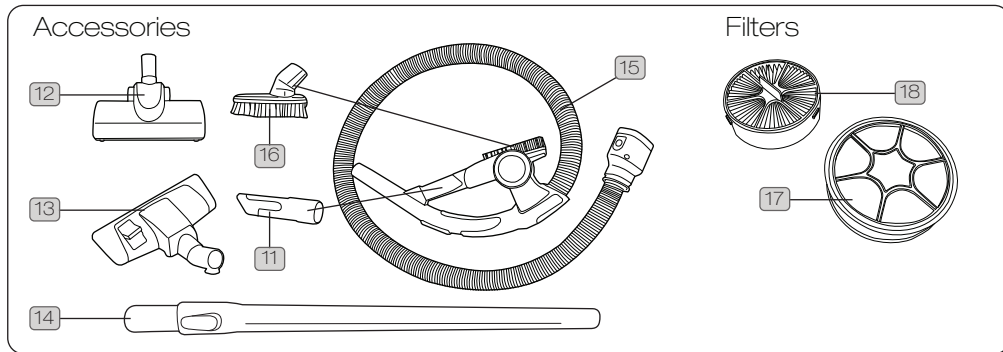
C91-MZ Series

Machine Overview



Unit

- | | | |
|------------------------------------|---|---------------|
| 1 On/off button | 6 Dirt container release button | 10 Hose inlet |
| 2 Auto cord rewind button (hidden) | 7 Separator | |
| 3 Floor tool parking slot (hidden) | 8 Dirt container | |
| 4 Carry handle | 9 Max fill line | |
| 5 Dirt container carry handle | Dirt container must be emptied as soon as this line is reached. | |




- | | |
|--|--|
| 11 Crevice tool | 15 Flexible hose & handle |
| 12 Turbobrush (not standard on all models) | 16 2-in-1 tool (dusting brush & upholstery tool) |
| 13 Combination floor tool | 17 Pre-motor filter (hidden) |
| 14 Telescopic extension tube | 18 Post-motor filter (hidden) |


General Safety Information


FOR HOUSEHOLD USE ONLY.

When using the vacuum cleaner, basic safety precautions should always be observed, including the following:


1. Only use the vacuum cleaner indoors on dry surfaces.
2. Turn off the vacuum cleaner controls before disconnecting or connecting from the mains supply.
3. Always unplug the vacuum cleaner before connecting or disconnecting the vacuum hose and accessories.
4. Children should be supervised to ensure that they do not play with the appliance.
5. This appliance is not intended for use by persons (including children) with reduced physical, sensory or mental capabilities, or lack of experience and knowledge, unless they have been given supervision or instruction concerning use of the appliance by a person responsible for their safety.
6. Use only as described in this manual. Use only Vax recommended attachments.
7. Do not use the vacuum cleaner if it has been dropped, damaged, left outdoors or dropped into water. Do not use the vacuum cleaner with a damaged cord or plug. If the supply cord is damaged return the vacuum cleaner to a Vax Authorised Service Agent or a suitably qualified person for examination, repair or adjustment.
8. Do not pull or carry by cord. Do not use the cord as a handle, close a door on the cord or pull cord around sharp edges or corners. Do not run the vacuum cleaner over the cord. Keep the cord away from heated surfaces.
9. Do not handle the plug or vacuum cleaner with wet hands. Do not use outdoors or on wet surfaces.
10. Do not put any objects into openings. Do not use with any openings blocked and do not restrict airflow. Keep all openings free of dust, lint, hair or anything that might reduce airflow.
11. Keep hair, loose clothing, fingers and all parts of the body away from openings and moving parts.
12. Do not pick up hot coals, cigarette butts, matches or any hot, smoking or burning objects.
13. Do not pick up flammable or combustible materials (lighter fluid, petrol, kerosene etc.) or use in the presence of explosive liquids or vapours.
14. Do not vacuum up harmful or toxic material (chlorine, bleach, ammonia, drain cleaner etc.).
15. Do not vacuum up hard or sharp objects such as glass, nails, screws, coins, etc.
16. Do not use without ALL of the filters in place.
17. Take extra care when vacuuming on stairs.
18. Keep vacuuming area well lit.
19. Store the vacuum cleaner in a cool, dry area.
20. Turn off the on/off switch before unplugging the vacuum cleaner
21. Use only CE-approved 13 amp extension cords. Non-approved cords may overheat. Care should be taken to arrange the cord so that the cord cannot be tripped over.

 **WARNING:** Always switch off and unplug the vacuum cleaner from the electrical outlet before assembling, opening or emptying the dirt container, or before connecting/disconnecting the attachments.

 **CAUTION:** The vacuum cleaner is a very powerful unit. Before plugging the cord into the electrical outlet, make sure the switch is in the 'off' position. Hold the vacuum cleaner firmly when starting and in use.

 **IMPORTANT:** If the inlet, hose or telescopic tube is blocked, switch off the vacuum cleaner and remove the blockage(s) before re-starting the vacuum cleaner.

 **IMPORTANT:** Cleaning filters improves vacuum performance. Vax recommends that your filters should be checked and cleaned periodically. If your filters are washable make sure they are completely dry before inserting back into the vacuum cleaner.

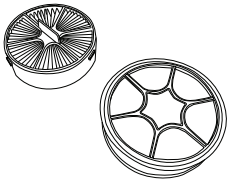
 **IMPORTANT:** The motor is equipped with a thermal cut-out. If for any reason the unit should overheat, the thermostat will automatically turn the unit off. Should this occur, unplug the vacuum cleaner from the electrical outlet and turn off the switch. Remove dirt container and empty. Clean filters. Allow the unit to cool for approximately one (1) hour. To re-start, plug into an electrical outlet and switch back on.

This vacuum cleaner is intended for household use only and NOT for commercial or industrial use.

PLEASE KEEP INSTRUCTIONS FOR FURTHER USE.

Operation

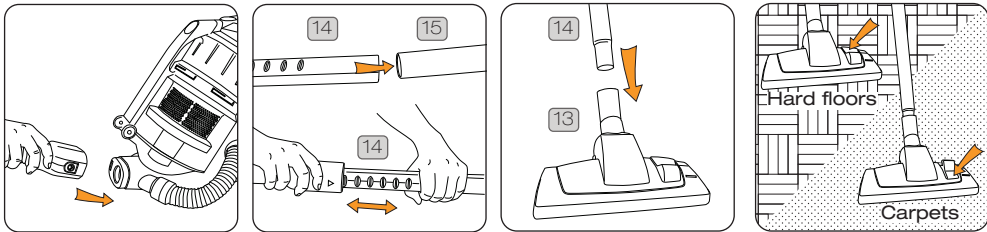
Keep your Vax like new



! **IMPORTANT:** The condition of the filters affects the performance of your machine. Please check and clean filters periodically (depending on the level of use). For full cleaning instructions, see page 5.

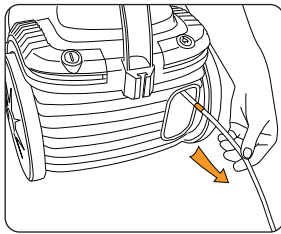
! **IMPORTANT:** Do not use the vacuum cleaner without all of the filters in place.

Assembling your vacuum cleaner



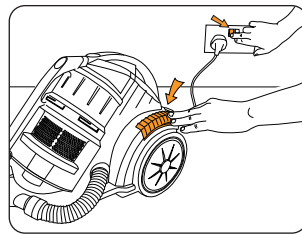
NOTE: The crevice tool, dusting brush and upholstery tool can all be attached to the telescopic tube or to the handle.

Operating the appliance

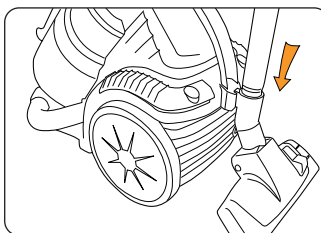
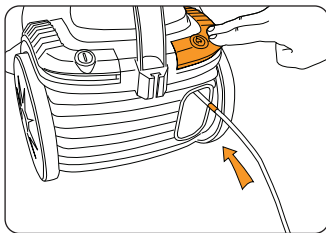


NOTE: Fully unwind power cord before every use. A yellow mark on the cord indicates the recommended cord length. Do not exceed the cord length beyond the yellow mark.

Switch vacuum cleaner on



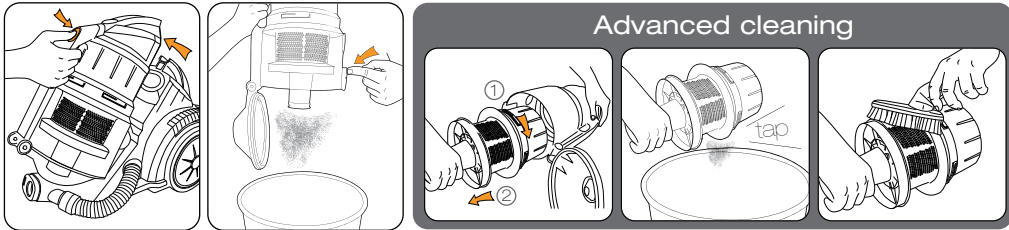
Packing away and storage



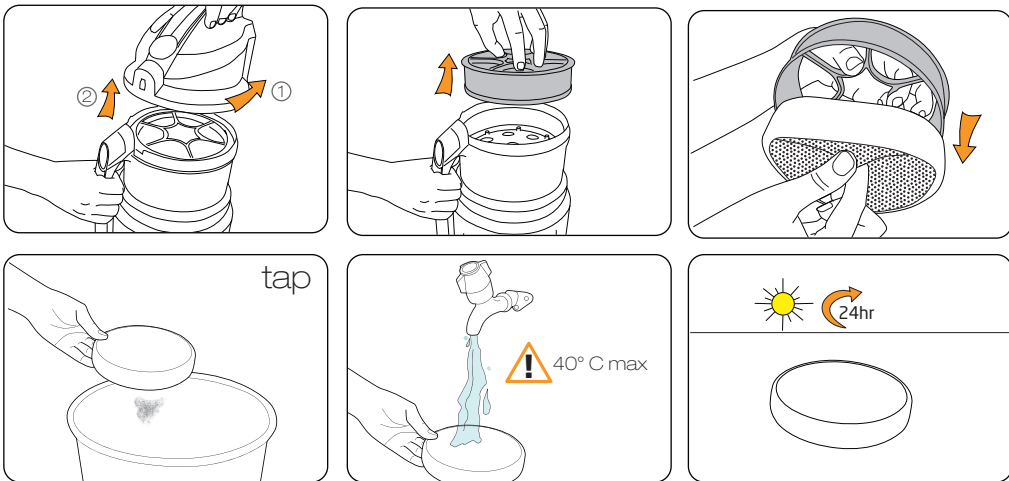
NOTE: For convenience there is a parking slot located at the rear of the vacuum cleaner where the floor tool and tubes can be attached for storage and carrying.

Maintenance (Keep your Vax as good as new)

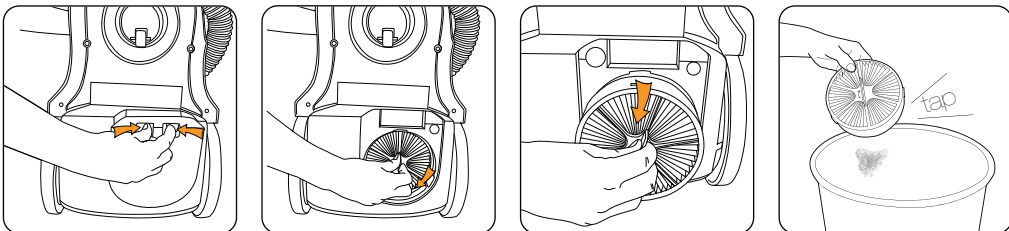
Emptying and cleaning the dirt container



Cleaning the HEPA pre-motor filter



Cleaning the post-motor filter **!** WARNING: Do not wash the post-motor filter.



Maintenance (Keep your Vax as good as new)

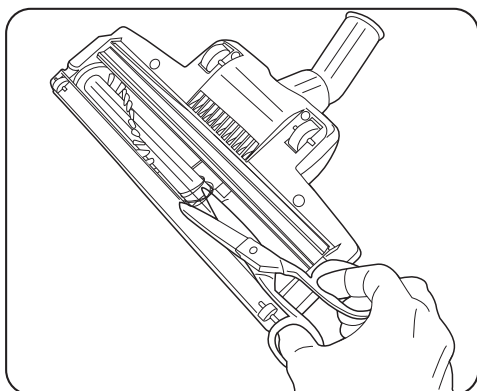
Cleaning Blockages

⚠ WARNING: To reduce the risk of electric shock, turn the vacuum cleaner off and unplug from the electrical outlet before performing maintenance/troubleshooting checks.

Disconnect the hose from the vacuum cleaner and remove any blockages found then reconnect the hose securely.

Removing debris from the TurboBrush (not standard on all models)

The brushbar will stop rotating if it becomes blocked. Using a pair of scissors, cut through any threads or hairs caught around the brushbar.



FAQs



WARNING: to reduce the risk of personal injury, unplug the vacuum cleaner before performing maintenance/troubleshooting checks.

Is there an accessory missing?

- Check the 'Machine Overview' page in this guide to make sure the part is definitely included in your unit.
- If it is missing, we're here to help. Simply call us on **0870 606 1248**

What do I do if an accessory/the unit becomes damaged or broken?

- Visit www.vax.co.uk for parts and spares.
- Please call our Vax careline to purchase new spares or order a replacement: **0870 606 1248**

Why won't the vacuum cleaner pick up?

- The filters may be clogged: Refer to the Maintenance sections (Page 5).
- The Dirt Container is full or blocked: Refer to the Maintenance sections (Page 5).
- The Dirt Container may be incorrectly installed: Refer to the Maintenance sections (Page 5).

Why won't the accessories pick up properly?

- The accessory may be blocked: Refer to the Maintenance section (Page 6).
- The accessory may be faulty: call our Vax Careline to order a replacement: **0870 606 1248**

Why is dust escaping from the vacuum?

- The filters may not be installed correctly. Refer to the Maintenance sections (Page 5).
- The Dirt container may be incorrectly installed: Remove the Dirt Container from the unit by pressing the Dirt Container Release Button (6) and reattach it to the unit, ensuring it is locked firmly back into place.
- The filters may be clogged: Refer to the Maintenance sections (Page 5).

Why will the vacuum cleaner not run?

- It may not be plugged into the electrical outlet correctly: Ensure that the plug is pushed into the electrical outlet securely.
- The electrical outlet may not be working: Check the fuse or breaker and consult an electrician.
- The motor Thermostat may have tripped: Switch off and unplug the vacuum cleaner. Leave for one hour before switching the vacuum cleaner back on.



we  to help

Don't take your machine back to the shop, simply contact us

vax.co.uk

0870 606 1248

Other Information

UK Service & Help

Vax Customer Careline 0870 6061248

Monday-Friday 8.30am to 6.30pm

Saturday-Sunday 9.00am to 5.00pm

Any queries or concerns about using the Vax, call the Vax Careline. Calls are charged at the UK national rate.

Please make a note of the serial number and model number of the carpet cleaner before calling. There are over 400 approved Vax Service Agents in the UK. For the nearest Service Agent, please call the Vax Customer Careline or visit vax.co.uk

Technical Specification

Voltage: 220-240V ~50Hz

Wattage: 1600 W

Capacity: 2.6L

Filters: Pre-motor filter (washable)
HEPA post-motor filter (lifetime - tap to clean)

Cord length: 8m (approx)

Weight: 6.5kg

Subject to technical change without notice.



EEC Statement of Compliance

Manufacturer/EEC importer: Vax Limited, hereby on our own responsibility, declare that the C91-MZ Mach Zen series is manufactured in compliance with the following Directives:

Safety: 2006/95/EC Low Voltage Directive

EMC: 2004/108/EC Electromagnetic Compatibility Directive

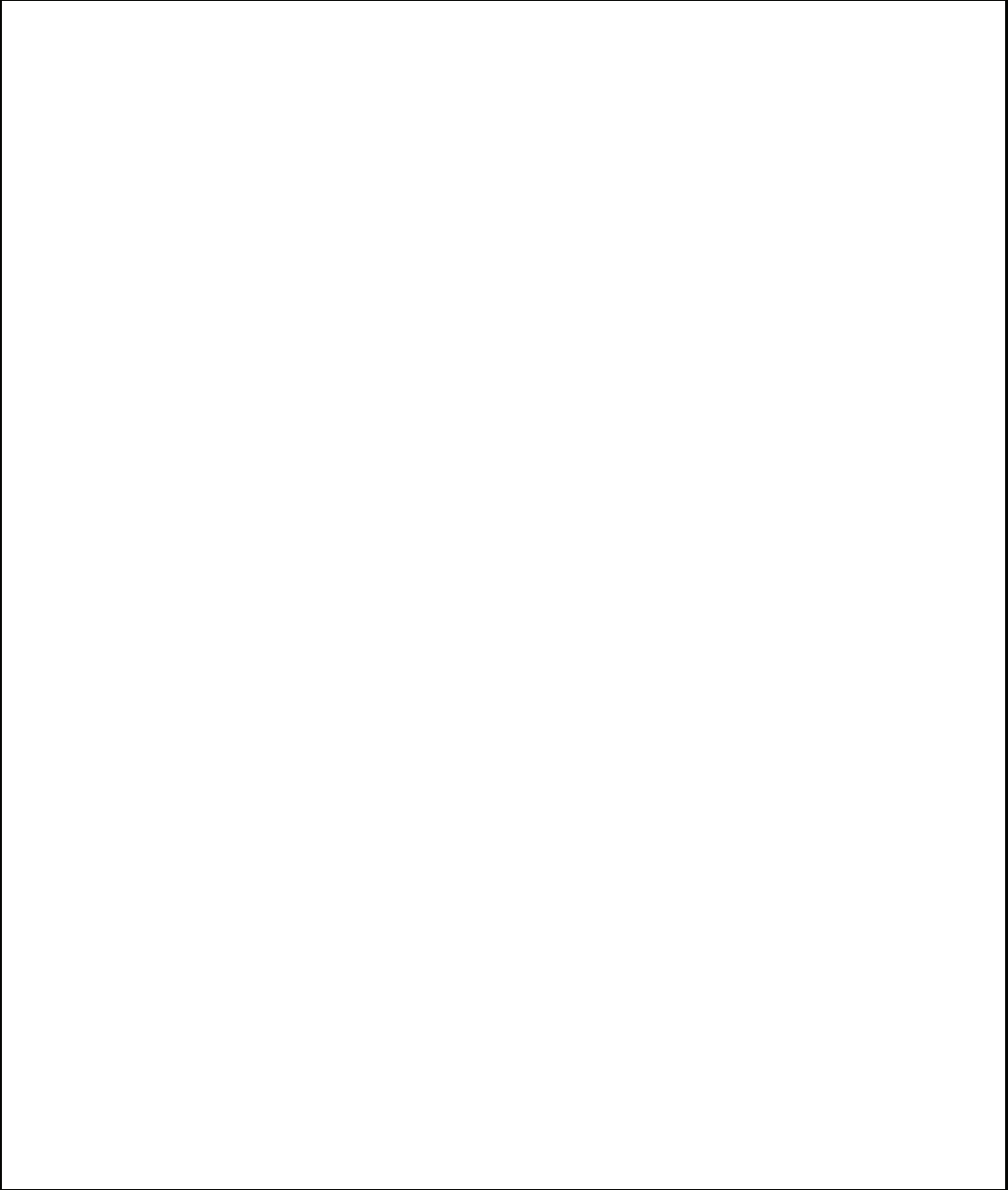


Waste electrical products should not be disposed of with household waste. Please recycle where facilities exist. Check with your Local Authority or retailer for recycling advice.

Notes



Notes



Notes





Vax Ltd., Kingswood Road, Hampton Lovett, Droitwich, Worcestershire, WR9 0QH, UK
email: info@vax.co.uk - website: vax.co.uk