

POWERFORCE 300™ **USER GUIDE**

1491 SERIES

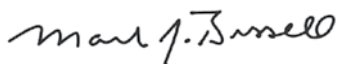
Thanks for buying a BISSELL vacuum

We're glad you purchased a BISSELL vacuum. Everything we know about floor care went into the design and construction of this complete, high-tech home cleaning system.

Your BISSELL vacuum is well made, and we back it with a limited two-year guarantee. We also stand behind it with a knowledgeable, dedicated Consumer Care department, so, should you ever have a problem, you'll receive fast, considerate assistance.





My great-grandfather invented the floor sweeper in 1876. Today, BISSELL is a global leader in the design, manufacture, and service of high-quality homecare products like your BISSELL vacuum.

Thanks again, from all of us at BISSELL.



Mark J. Bissell
Chairman & CEO

Symbol Definitions

	WARNING	AN ACTION OR ATTENTION IS NEEDED TO THIS AREA IN ORDER TO REDUCE THE RISK OF ELECTRIC SHOCK, FIRE, OR INJURY
	TIP	NOTE OR HINT WHICH IS NOT ESSENTIAL BUT MAY IMPROVE USABILITY
	GUIDE	READ USER GUIDE FOR COMPLETE SAFETY AND USER INSTRUCTIONS
	WEEE	DO NOT THROW THE APPLIANCE AWAY WITH THE NORMAL HOUSHOLD WASTE AT THE END OF ITS LIFE, BUT HAND IT IN AT AN OFFICIAL COLLECTION POINT FOR RECYCLING. BY DOING THIS YOU WILL HELP TO PRESERVE THE ENVIRONMENT.

IMPORTANT SAFETY INSTRUCTIONS

READ ALL INSTRUCTIONS BEFORE USING YOUR VACUUM.

When using an electrical appliance, basic precautions should be observed, including the following:



WARNING

TO REDUCE THE RISK OF FIRE, ELECTRIC SHOCK, OR INJURY:

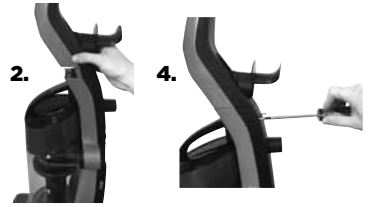
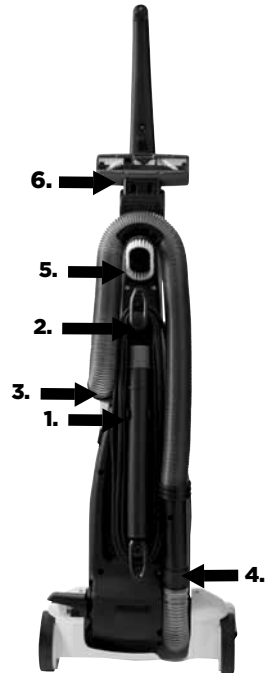
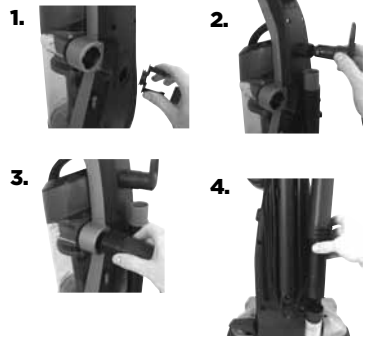
- » Do not leave appliance when plugged in.
- » Unplug from electrical socket when not in use and before servicing.
- » Do not allow to be used as a toy.
- » Not intended for use by persons (including children) with reduced physical, sensory or mental capabilities, or lack of experience and knowledge, unless they have been given supervision or instruction concerning use of the appliance by a person responsible for their safety.
- » Use only as described in this user guide.
- » Use only manufacturer's recommended attachments.
- » Do not use with damaged cable or plug.
- » If supply cable is damaged, it must be replaced by the manufacturer or its service agent in order to avoid a hazard.
- » Do not immerse in water or liquid.
- » Do not use outdoors or on wet surfaces.
- » Close attention is necessary when used by or near children.
- » If appliance is not working as it should, has been dropped, damaged, left outdoors, or dropped into water; do not attempt to operate it and return it to a service center.
- » Do not pull or carry by cable, use cable as a handle, close door on cable, or pull cable around sharp edges or corners.
- » Do not run appliance over cable.
- » Keep cable away from heated surfaces.
- » Do not unplug by pulling on cable.
- » To unplug, grasp the plug, not the cable.
- » Unplug from socket before connecting TurboBrush™ Tool
- » Do not handle plug or appliance with wet hands.
- » Do not put any object into openings.
- » Do not use with any opening blocked; keep free of dust, lint, hair, and anything that may reduce air flow.
- » Keep hair, loose clothing, fingers, and all parts of body away from openings and moving parts.
- » Turn off all controls before unplugging.
- » Use extra care when cleaning on stairs.
- » Do not use to pick up flammable or combustible liquids, such as petrol, or use in areas where they may be present.
- » Do not pick up toxic material (chlorine bleach, ammonia, drain cleaner, etc.)
- » Do not use appliance in an enclosed space filled with vapours given off by oil base paint, paint thinner, some mothproofing substances, flammable dust, or other explosive or toxic vapours.
- » Do not pick up hard or sharp objects such as glass, nails, screws, coins, etc.
- » Use only on dry, indoor surfaces.
- » Keep appliance on a level surface.
- » Do not pick up anything that is burning or smoking, such as cigarettes, matches, or hot ashes.
- » Do not use without dust bag and/or filters in place.
- » If your appliance is fitted with a nonrewireable BS 1363 plug it must not be used unless a 13 amp (ASTA approved to BS 1362) fuse is fitted in the carrier contained in the plug. (Spares may be obtained from your BISSELL supplier). If for any reason the plug is cut off, it must be disposed of, as it is an electric shock hazard should it be inserted into a mains socket.
- » This appliance is provided with double insulation. Use only identical replacement parts.

SAVE THESE INSTRUCTIONS FOR FUTURE USE

IMPORTANT: FOR OPERATION ON A 220-240 VOLT A.C. 50/60 HZ POWER SUPPLY ONLY.

This model is for household use only.



A**Product View****B1****Assembly (handle)****B2****Assembly (hose)**

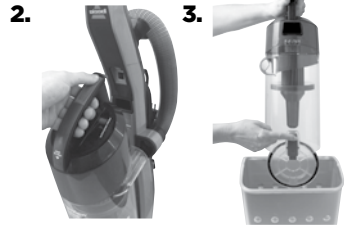
C1 Handle Position



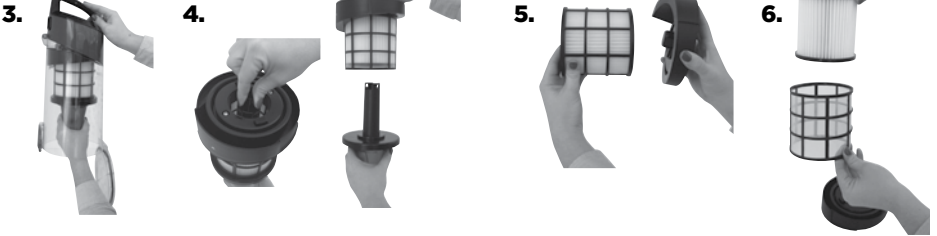
C2 Height Adjustment



C3 Empty Dirt Tank



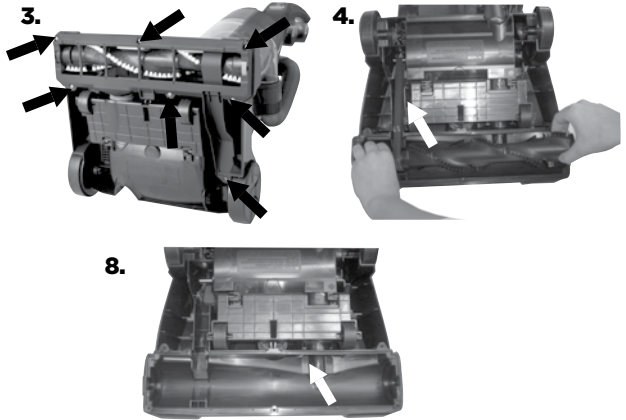
D1 Cleaning Inner Cyclone Filter



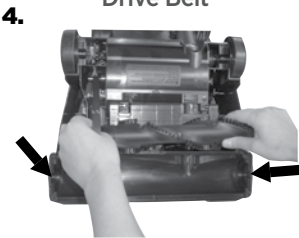
D2 Cleaning Post Motor Filter



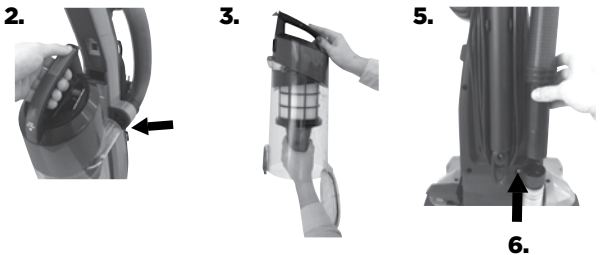
D3 Checking Brush & Drive Belt



D4 Replacing Drive Belt



D5 Clearing Clogs



A Product View



Do not plug in your cleaner until you have completely assembled it per the following instructions and are familiar with all instructions and operating procedures.

- | | |
|--|--|
| 1 Handle | 16 Quick Release® |
| 2 TurboBrush™ Tool
(select models only) | 17 Cable Wrap |
| 3 Tank Release Button | 18 Crevice Tool |
| 4 Carry Handle | 19 Extension Wand |
| 5 Lid Release Button | 20 Extension Wand Clip |
| 6 Cyclonic Filter Separator
& Dust Screen | 21 Power Switch |
| 7 Bottom Easy Empty™
Dirt Tank | 22 Power Cable |
| 8 Post-Motor Filter | 23 Handle Release Pedal |
| 9 Height Adjustment Knob | 24 Hose Wand Base |
| 10 Furniture Protection Guard | 25 Foot Hose |
| 11 Powerfoot | 26 Crevice Tool |
| 12 Cable Clip | 27 Dusting Brush |
| 13 Upper Hose Wrap | 28 Extension Wand |
| 14 Dusting Brush | 29 TurboBrush™ Tool
(select models only) |
| 15 Stretch Hose | 30 Post Motor Febreze™ Filter*
(Select models only) |

B2-Attach vacuum hose, clips & tools

1. Attach the extension wand clip by inserting the clip into the back of the vacuum base and twisting clockwise. Mount the extension wand (with crevice tool inside) on the back of the vacuum.

2. Snap the upper cable wrap into the socket located above the extension wand clip. Wrap the power cable around the cable wrap clips.

3. Attach the Twist 'n Snap™ hose by lining up the tabs on the cuff with the corresponding notches on the back of the vacuum. Twist the Twist 'n Snap hose clockwise to lock the hose into place.

4. Slide the end of the hose wand into the hose wand base, and fold the hose over the upper hose wrap.

Note: The powerfoot will not suction properly unless the hose wand is firmly attached.

5. Slide the dusting brush into the opening below the upper hose wrap.

6. The TurboBrush™ Tool (for select models) secures to the back of the handle in the mount above the Upper Hose Wrap.

B Assembly

The only tool you'll need to assemble your vacuum cleaner is a Phillips head screwdriver.

B1-Attach handle to vacuum

1. Locate the vacuum handle and remove the screw packet taped to the handle. The screw packet contains two screws of equal length.

2. Stand the vacuum upright and slide the base of the handle firmly into the opening at the top of the vacuum body.

3. Check to be sure the handle is fitted to the vacuum body. If there are any gaps between the handle and the vacuum base, continue to push the handle firmly into the base until the handle is flush.

4. Insert the two screws from the screw packet into the existing holes. Push each screw firmly into the hole before beginning to secure the screw with a Phillips head screwdriver. If the handle is aligned properly on the vacuum base, you should be able to push the screw almost entirely into the hole until only the screw head is visible. Tighten the screw with a Phillips head screwdriver by rotating the screw clockwise.



Before using your vacuum, make sure that the dirt tank is in the locked position and that both filters (pre-motor and post-motor) are in place. Do not operate your vacuum without these filters.



The rotating floor brush continues to rotate while tools are in use. To reduce the risk of injury from moving parts, always move the cleaner with the carrying handle at the back of the cleaner. Always place vacuum cleaner on floor with handle in upright position when using tools. Never place your fingers under the cleaner when it is running. Never place powerfoot on furniture or uneven surfaces. Do not place vacuum cleaner close enough to objects to pull them into rotating brush.

While vacuuming, certain carpets and low humidity conditions may generate small static discharges. The discharges are entirely harmless and are not associated in any way with the main power supply.

The floor brush will continue to rotate while you use your vacuum for above floor cleaning. To prevent carpet damage, do not lean on the vacuum or let the powerfoot tilt forward.

*Febreze™ and related trademarks are owned by The Procter & Gamble Company, Cincinnati, Ohio and used under license by BISSELL Homecare, Inc.

C Operations

Power switch

The Power switch is located on the left side of the vacuum. Push the rocker switch "ON" (I) to vacuum, and "OFF" (O) when cleaning is complete.

C1-Handle position

Press the handle release pedal with your foot to place your vacuum into one of three cleaning positions.

- 1. Upright-** For storage and above floor cleaning with tools.
- 2. Normal cleaning** - Press handle release household floor cleaning tasks.
- 3. Low cleaning** -With the vacuum in normal cleaning position, press handle release pedal again, use for reaching under low furniture such as tables, chairs or beds.

C2-Height adjustment

There are five height settings available for various floor surfaces. Turn the dial on the foot of the cleaner to the desired setting.

Lowest setting - For low pile carpet or bare floors. To pick up debris, it may be necessary to move up one setting.

Medium setting - For medium pile carpet.

Highest setting - For high pile and most shag carpet.

NOTE: For optimal carpet cleaning performance, adjust to the lowest practical setting. If your cleaner is difficult to push, adjust to the next higher setting.

If the dial is difficult to turn, tilt the cleaner back slightly to take the weight off the foot while turning.



- » Hair, string and small objects can block the vacuum hose or tools. Check them occasionally for obstructions.
- » Before cleaning under low furniture, check area first for objects that might harm the unit or block the vacuum hose.
- » Your vacuum features a Quick Release cable wrap. To remove the power cable quickly and easily, rotate the upper cable wrap toward the floor and slip the power cable off the upper and lower cable wraps.

Transporting cleaner

1. To move your cleaner from room to room, put the handle in the upright position, tilt the cleaner back on its rear wheels and push forward.
2. The cleaner can also be moved by using the carrying handle.

Special tools

Your BISSELL vacuum is not only a powerful carpet and rug vacuum cleaner, it's also a versatile above floor vacuum cleaner when you select one of the special tools.

1. Raise handle to upright position.
2. Grasp the hose wand and separate from the hose wand base.
3. Attach tools by firmly pushing onto vacuum hose or extension wand

Crevice tool - Use in tight narrow spaces.

Dusting Brush - Use brush to dust furniture, blinds, books, lamps, shelves and baseboards.

Extension wand - Use with desired attachment for a longer reach.

TurboBrush™ Tool (select models only) - Use rotating brush action for small flat areas such as stairs and cushions. Press gently down and pull toward you in a raking motion; too much pressure will cause the brush to stop rotating.

Filters

Your BISSELL vacuum comes with two post motor filters, one Febreze™ scented and the other fragrance free. The fragrance free filter is located in the filter tray under the dirt container (see page 7, D2 #2). For scented cleaning, remove the filter from the filter tray and insert the Febreze™ filter.

For optimal cleaning performance, check the pre-motor filter at least once a month and clean or replace as needed.

The inner cyclone filter is located in the dirt container. Follow instructions on page 7 for maintenance and care.

Power cable storage

When you have finished using your BISSELL vacuum, return it to the upright position and store the power cable.

1. Turn vacuum cleaner off.
2. Unplug power cable by grasping the polarized plug (NOT the cable) and disconnect from socket.
3. Wrap power cable around cable wraps located on the back of the vacuum.
4. Clip molded plug to power cable to secure.

C3-Empty dirt tank

The dirt tank needs to be emptied when the dirt reaches the "Full" line on the side of the tank.

1. Unplug cleaner from electrical socket.
2. Remove the Easy Empty dirt tank from the vacuum base by pushing the tank release button.
3. Hold the dirt tank over a garbage container. Press the bottom lid release button on the back of the dirt tank to empty dirt.
4. Mount the Easy Empty dirt tank back on the vacuum base.

NOTE: The dirt tank may be washed in warm water with a mild detergent. Make sure it is completely dry before replacing.

D Care & Storage

To maintain maximum cleaning performance, the following maintenance steps must be performed:

D1-Clearing the inner cyclone filter

Check the inner cyclone filter after every use for build up or clogs. For optimal performance, it is recommend to clean the inner cyclone filter after every use.



To reduce the risk of electric shock, turn power switch off and disconnect plug from electrical socket before performing maintenance or care.



Do not operate cleaner with damp or wet filters or without all filters in place.

Use only genuine BISSELL replacement filters in your BISSELL vacuum.

1. Unplug the cleaner from electrical socket.
2. Remove the Easy Empty dirt tank.
3. With the bottom of Easy Empty dirt tank open, reach up into the dirt cup and grasp the cyclone. Twist the filter cyclone clockwise to unlock and pull straight down to remove.
4. Locate the snaps on the top of the filter cyclone. Squeeze the clips and pull up to remove from the handle.
5. Separate the cyclone from the filter by pulling them apart.
6. Remove the filter screen, brush off any large debris and rinse under water. Make sure the screen is dry before replacing.
7. The filter is washable and can be rinsed under water. It is best to tap off large debris prior to rinsing under water. Make sure the filter is dry before replacing.
8. Replace the filter cyclone following these steps.
 - a. Replace screen on filter
 - b. Fit together the filter and the upper cyclone by setting it in place
 - c. Slide the filter onto the tool handle and make sure it clips into place
 - d. Line up the arrow on the back of the dirt container to the arrow on the filter cyclone and slide the filter cyclone into the tank
 - e. Twist counterclockwise to lock into place

NOTE: More frequent filter cleaning or replacing may be necessary if you are vacuuming new carpet, fine dust, or have allergy concerns. Follow the instructions on the following pages to perform these simple maintenance steps.



» When replacing the inner filter cyclone after cleaning, open the lid to help guide the inner cyclone into the grooves at the top of the tank.



D2-Replacing the post-motor filter

Use only a genuine BISSELL replacement post-motor filter in your BISSELL vacuum.

1. Unplug the cleaner from electrical socket.
2. To access the post-motor filter, remove the filter tray located below the Easy Empty dirt tank.
3. When the filter becomes dirty, remove the filter from the bottom of the tray and clean or replace the filter. (Tip: flip the filter tray over to access the filter).

NOTE: Your vacuum comes with both a regular post motor filter and a Febreze™ filter. The regular filter is already located in your filter tray. If you prefer to clean with Febreze™, remove the regular filter and replace it with the Febreze™ filter. The Febreze™ post motor filter is not washable.

D3-Checking rotating floor brush and drive belt

You should check your vacuum cleaner's rotating floor brush and drive belt regularly for wear or damage. You should also clean the brush and brush ends of strings, hair and carpet fibers. These can wrap around the brush and hamper its ability to effectively clean your carpet. Also remove any debris that has accumulated under the brush cover.

1. Unplug cleaner from electrical socket.
2. Place handle in low position and turn vacuum cleaner over so bottom side is up.
3. Remove the seven screws with a Phillips head screwdriver. Lift the brush cover off.
4. Grasp rotating floor brush at both ends and lift straight out of the vacuum foot. Slip off the belt.
5. Clean strings, hair and other debris from rotating floor brush, paying particular attention to brush ends.
6. Clean strings, hair and other debris from motor pulley and drive belt areas.
7. Check drive belt carefully for wear, cuts or stressed areas, and replace if necessary (see instructions on following page).
8. Check air passageway for obstructions. Remove debris from this area.

D4-Replace drive belt

Use only a genuine BISSELL style 9 replacement belt (#203-1093) in your BISSELL vacuum.

1. Unplug cleaner from electrical socket.
2. With rotating floor brush removed from vacuum cleaner (steps 1-4 of Check rotating floor brush and drive belt), grasp old drive belt and remove from motor pulley. Discard old drive belt.
3. Place new drive belt over motor pulley and stretch other end over rotating floor brush in the space between the bristles.
4. Place ends of rotating floor brush down into slots on sides as shown.
5. Turn rotating floor brush by hand several times in the direction of motor pulley. If properly installed, drive belt will center itself on rotating brush.
6. Reposition the brush cover and screw all seven screws back into place.

D5-Clearing a clog

Low suction or poor pickup may be due to a clog in the vacuum cleaner. If you notice a change in the sound of the motor or a reduction in the spinning action, check for clogs.

1. Unplug cleaner from electrical socket.
2. Remove Easy Empty dirt tank from vacuum base and empty dirt and debris.
3. Remove inner cyclone filter from Easy Empty dirt tank (see page 9) and check for debris build-up or clogs in the upper tank.
4. Check the suction inlet for a clog.
5. Grasp the hose wand to separate from the hose wand base. Check for a clog in the base, the wand or within the hose.
6. Remove the screw attaching the hose wand base to the vacuum. Straighten the hose wand base and check for clogs with a long, narrow object such as a broom stick. Do not use sharp objects like a clothes hanger, as these may puncture the hose.
7. If the clog persists, follow the instructions for checking the rotating floor brush on page 10 and inspect the air passageway for obstructions.

Troubleshooting

WARNING

To reduce the risk of electric shock, turn power switch off and disconnect polarized plug from electrical socket before performing maintenance or troubleshooting checks.

Problem	Possible causes	Remedies
Vacuum cleaner won't turn on	Power cable not plugged in	Check electrical plug
	Blown fuse/tripped breaker	Check/replace fuse or reset breaker
Vacuum cleaner won't pick up dirt	Incorrect height adjustment	Adjust powerfoot to correct height setting
	Hose not attached to suction opening	Grasp the hose wand and firmly push into the hose wand base
	Crack or hole in hose	Check hose and replace if needed
	Broken or worn drive belt	Replace drive belt, see page 11
	Rotating floor brush bristles worn	Replace brush
	Rotating floor brush jammed	Remove brush and clean debris from brush ends, see page 10
	Clog in vacuum	Follow instructions on page 12 for clearing clogs
	Dirt tank full	Empty dirt tank
	Dirt tank or upper tank not installed properly	Position correctly and lock in place
Filters are dirty	Check and clean or replace pre-motor and post-motor filters, see pages 9, 10	
Tool won't pick up dirt	Crack or hole in hose	Check hose and replace if needed
	Clog in vacuum	Follow instructions on page 12 for clearing clogs
	Dirt tank full	Empty dirt tank
	Dirt tank or upper tank not installed properly	Position correctly and lock in place
	Filters are dirty	Check and clean or replace pre-motor and inner filter cyclone see pages 8 & 9
Vacuum cleaner is difficult to push	Incorrect height adjustment	Adjust powerfoot to correct height setting
Visible dirt escaping from cleaner	Dirt tank full	Empty dirt tank
	Filters missing or installed incorrectly	Check inner filter cyclone and post-motor filters for correct installation

Please do not return this product to the store.




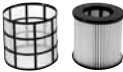

Other maintenance or service not included in the manual should be performed by an authorized service representative.

Thank you for selecting a BISSELL product.

For any questions or concerns, BISSELL is happy to be of service. Contact Customer Care listed on page 12.

Replacement Parts

These items are available for purchase as accessories for your BISSELL vacuum:
To purchase visit www.BISSELL.com.

PART #	PART NAME		PART #	PART NAME	
203-1093	Style 9 Drive Belt (2-Pack)		160-1219	Hose Assembly	
111E	Filter pack (includes two post-motor Febreze™ filters)		160-1220	Filter Cyclone (includes screen)	
160-1218	Post motor (non-scented)				

Accessories

These items are available for purchase as accessories for your BISSELL vacuum:
To purchase visit www.BISSELL.com.

PART #	PART NAME		PART #	PART NAME	
203-1748	TurboBrush™ Pet Tool		203-1056	Crevice Tool	
203-2666	Extension Wand		203-1527	Dusting Brush	
160-0064	6-inch TurboBrush™ Tool				

*Not all parts are included with every model



Consumer Guarantee

This Guarantee only applies outside of the USA and Canada. It is provided by BISSELL International Trading Company BV ("BISSELL").

This Guarantee is provided by BISSELL. It gives you specific rights. It is offered as an additional benefit to your rights under law. You also have other rights under law which may vary from country to country. You can find out about your legal rights and remedies by contacting your local consumer advice service. Nothing in this Guarantee will replace or lessen any of your legal rights or remedies. If you need additional instruction regarding this Guarantee or have questions regarding what it may cover, please contact BISSELL Consumer Care or contact your local distributor.

This Guarantee is given to the original purchaser of the product from new and is not transferable. You must be able to evidence the date of purchase in order to claim under this Guarantee.

Limited Two-Year Guarantee

Subject to the *EXCEPTIONS AND EXCLUSIONS identified below, BISSELL will for two years from the date of purchase by the original purchaser repair or replace (with new or remanufactured components or products), at BISSELL's option, free of charge, any defective or malfunctioning part or product.

BISSELL recommends that the original packaging and evidence of the date of purchase be kept for the duration of the Guarantee period in case the need arises within the period to claim on the Guarantee. Keeping the original packaging will assist with any necessary re-packaging and transportation but is not a condition of the Guarantee.

If for your product is replaced by BISSELL under this Guarantee, the new item will benefit from the remainder of the term of this Guarantee (calculated from the date of the original purchase). The period of this Guarantee shall not be extended whether or not your product is repaired or replaced.

*EXCEPTIONS AND EXCLUSIONS FROM THE TERMS OF THE GUARANTEE

This Guarantee applies to products used for personal domestic use and not commercial or hire purposes. Consumable components such as filters, belts and mop pads, which must be replaced or serviced by the user from time to time, are not covered by this Guarantee.

This Guarantee does not apply to any defect arising from fair wear and tear. Damage or malfunction caused by the user or any third party whether as a result of accident, negligence, abuse, neglect, or any other use not in accordance with the User Guide is not covered by this Guarantee.

An unauthorised repair (or attempted repair) will void this Guarantee whether or not damage has been caused by that repair/attempt.

Removing or tampering with the Product Rating Label on the product or rendering it illegible will void this Guarantee.

SAVE AS SET OUT BELOW BISSELL AND ITS DISTRIBUTORS ARE NOT LIABLE FOR ANY LOSS OR DAMAGE THAT IS NOT FORESEEABLE OR FOR INCIDENTAL OR CONSEQUENTIAL DAMAGES OF ANY NATURE ASSOCIATED WITH THE USE OF THIS PRODUCT INCLUDING WITHOUT LIMITATION LOSS OF PROFIT, LOSS OF BUSINESS, BUSINESS INTERRUPTION, LOSS OF OPPORTUNITY, DISTRESS, INCONVENIENCE OR DISAPPOINTMENT. SAVE AS SET OUT BELOW BISSELL'S LIABILITY WILL NOT EXCEED THE PURCHASE PRICE OF THE PRODUCT.

BISSELL DOES NOT EXCLUDE OR LIMIT IN ANY WAY ITS LIABILITY FOR (A) DEATH OR PERSONAL INJURY CAUSED BY OUR NEGLIGENCE OR THE NEGLIGENCE OF OUR EMPLOYEES, AGENTS OR SUBCONTRACTORS; (B) FRAUD OR FRAUDULENT MISREPRESENTATION; (C) OR FOR ANY OTHER MATTER WHICH CANNOT BE EXCLUDED OR LIMITED UNDER LAW.

Consumer Care

If your BISSELL product should require service or to claim under our Limited Two-Year Guarantee, please visit:

Website or E-mail:
www.BISSELL.com

For UK inquiries:

Telephone: 0844.888.6644

Monday - Thursday 9am - 5pm

Friday 9am - 4pm

BISSELL Homecare (Overseas) Inc.

Ground Floor

226 Berwick Avenue

Slough, Berkshire, SL1 4QT

United Kingdom

Visit the BISSELL website: www.BISSELL.com

When contacting BISSELL, have model number of cleaner available.

Please record your Model Number: _____ Please record your Purchase Date: _____

NOTE: Please keep your original sales receipt. It provides proof of the date of purchase in the event of a Guarantee claim. See Guarantee for details.



©2015 BISSELL Homecare, Inc.
Grand Rapids, Michigan
All rights reserved. Printed in China
Part Number 160-1062 Rev 03/13
Visit our website at: www.BISSELL.com