


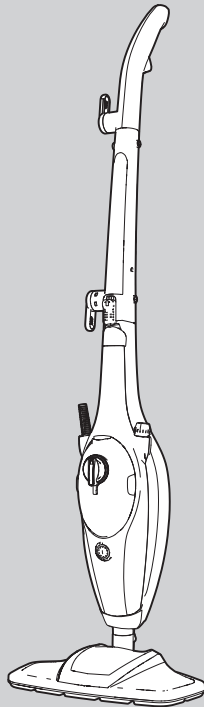
VC720502MUK Rev3

morphy richards[®]
smart ideas for your home



Upright and Handheld Steam Cleaner

 Please read and keep these instructions for future use



IMPORTANT: To prevent limescale problems which would not be covered by the guarantee, use only deionised, demineralised or distilled water (available from most large supermarkets). The anti-scale cartridge will reduce the effects of limescale but must be regularly replaced as advised on page 10.

SPARES:

All spares, eg. micro-fibre cloths and anti-scale cartridges may be purchased by calling our UK spares line directly on: **0844 873 0726** or logging onto www.morphyrichards.com

For competitions, product hints and tips and more join us at



www.morphyrichards.co.uk/blog



www.facebook.com/morphyrichardsuk



@loveyourmorphy

www.morphyrichards.com

* Register online for your 2 year guarantee. See back of this instruction book for details. (UK and Ireland customers only)

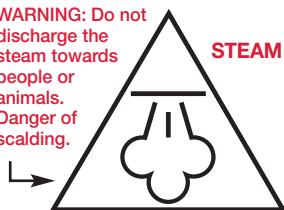
Health and Safety

The use of any electrical appliance requires the following common sense safety rules.
Please read these instructions carefully before using the product.

- **WARNING: Disconnect from the mains supply before carrying out any routine maintenance.**
- This appliance can be used by children aged from 8 years and above and persons with reduced physical, sensory or mental capabilities, or lack of experience and knowledge, if they have been given supervision or instruction concerning the use of the appliance in a safe way and understand the hazards involved.
- Children shall not play with the appliance.
- Cleaning and user maintenance shall not be undertaken by children without supervision.

Personal safety

- **WARNING: Never direct steam at electrical components or fittings. If in doubt about the suitability of steam for cleaning an appliance, contact the appliance manufacturer for advice prior to cleaning.**
- **WARNING: Never touch the plug or cable with wet hands.**
- **WARNING: Attachments and tools will be hot after use. Allow to cool before attempting to remove.**
- **WARNING: Do not discharge the steam towards people or animals. Danger of scalding.**



- **WARNING: Do not use the appliance without the filler cap in place.**
- **WARNING: In the event of a blockage, steam will be released from the steam relief vents.**
- To protect against fire, electric shock and personal injury, do not immerse cord, plug or steam cleaner in water or other liquid.
- The plug should be removed from the wall socket after use, before cleaning, filling or changing the accessories, or carrying out user maintenance.
- Keep the appliance out of reach of children when it is energised or cooling down.

Location

- Do not use or keep this product outside.
- Do not store the appliance near hot surfaces eg. ovens or heating appliances.

Mains cable

- **WARNING: A damaged or severed mains cable fitted with a plug should never be connected to the mains supply. It must be destroyed, as a damaged cable becomes hazardous if connected to a power socket.**
- If the supply cord is damaged, it must be replaced by the manufacturer, its service agent, or similarly qualified person to avoid a hazard.
- Do not allow the mains lead to become strained.

Product safety

- **WARNING: Always test on an inconspicuous area first. Never use on materials that can not resist high temperature, such as dralon, natural fur etc.**
- Never modify the steam cleaner in any way.
- Never operate the steam cleaner without water in the tank. Always top-up with water during extended periods of use.
- Never fill the steam cleaner's tank with anything other than deionised, demineralised or distilled water.

- The appliance is not to be used if it has been dropped, if there are visible signs of damage or if it is leaking.

Other safety considerations

- Do not use any chemical detergents, perfumes, alcohol or descaler etc in water.
- Repairs to electrical appliances are only to be undertaken by trained personnel.
- Unprofessional repairs can be dangerous for users.
- Use only genuine Morphy Richards spare parts and accessories.
- The appliance must not be left unattended while connected to the supply mains.
- This steam cleaner is intended for domestic use only. Misuse or use for commercial or any other purpose will render the guarantee invalid.

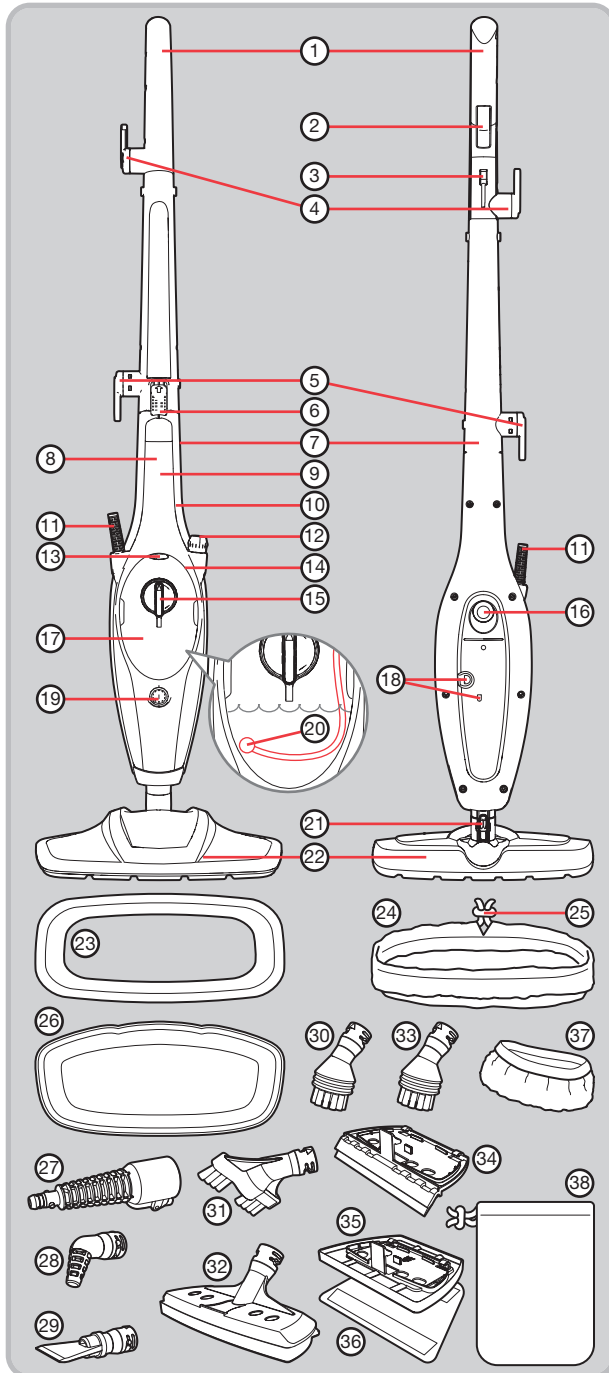
Electrical requirements

- Check that the voltage on the rating plate of your appliance corresponds with your house electricity supply which must be A.C. (Alternating Current).
- If the socket outlets in your home are not suitable for the plug supplied with this appliance the plug should be removed and the appropriate one fitted.
- **WARNING: This appliance must be earthed.**
- Should the fuse in the mains plug require changing, a 13 amp BS1362 fuse must be fitted.

Contents

Health and safety	2
Electrical requirements	2
Product overview / Features	4
Operating the appliance	5
Dual functionality	5
Upright steam cleaning: assembly	5
Using in upright steam cleaning mode	6 & 7
Using the handheld steam cleaner	8
List of attachments for use on the handheld steam cleaner	9
The water tank	10
Anti-scale	10
After use	10
Storage	10
Maintenance	11
Contact us	11
Notes	11
Guarantee	12

Product overview



Features

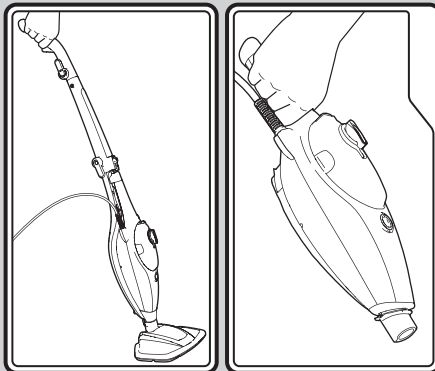
- (1) Handle
- (2) Steam trigger
- (3) Cord holder
- (4) Upper cord storage hook (rotatable)
- (5) Lower cord storage hook (fixed)
- (6) Handheld release button
- (7) Main body
- (8) Handheld handle
- (9) Handheld steam cleaner
- (10) Steam trigger (on underside of the handle of the handheld steam cleaner)
- (11) Power cord
- (12) Variable steam control
- (13) Water tank release button
- (14) Anti-scale cartridge (behind water tank)
- (15) Filler cap
- (16) On/Off power switch
- (17) Water tank
- (18) Steam relief vents
- (19) Power indicator light
- (20) Water tube with brass ball weight attached
- (21) Floorhead release button
- (22) Floorhead
- (23) Carpet glider
- (24) Micro-fibre floor cloth
- (25) Micro-fibre floor cloth tightening toggle
- (26) Cooling rest tray
- (27) Accessory adaptor
- (28) Angled nozzle attachment
- (29) Spatula attachment
- (30) Circular brush attachment
- (31) Long brush attachment
- (32) Utility attachment
- (33) Circular brass brush attachment (certain models only)
- (34) Squeegee attachment (attaches to utility attachment)
- (35) Flat cleaning head (attaches to utility attachment)
- (36) Flat cleaning cloth (attaches to flat cleaning head)
- (37) Elasticated utility cloth (attaches to utility attachment)
- (38) Accessory bag

Operating the appliance

IMPORTANT: Please remember that the steam cleaner operates by emitting steam at an increased temperature of 115°C. Always test on an inconspicuous area first. Never use it on objects or surfaces which cannot resist this temperature, or on surfaces with coatings or polishes, or on delicate materials such as dralon, plastic, natural fur or antique items etc.

If in doubt, check carefully on a part of the material where minor marks will not matter.

Dual functionality



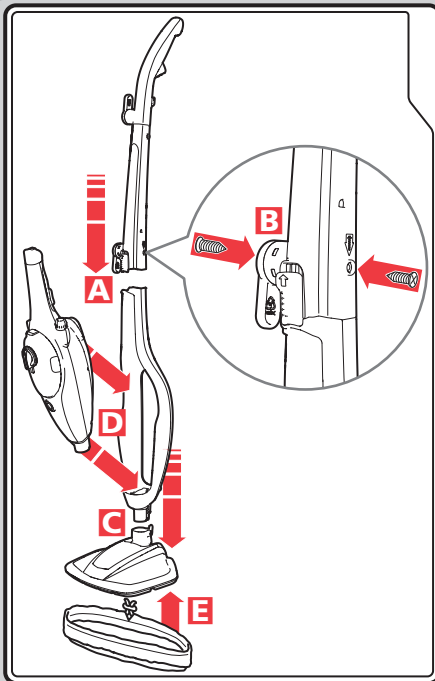
Upright steam cleaning Handheld steam cleaning

Your steam cleaner can easily be configured into two different cleaning modes:

- Upright steam cleaner for floors and carpets.
- Handheld steam cleaner (9) for cleaning vertical or hard to reach surfaces.

Attachments (27-37) can be used on the handheld steam cleaner.

Upright steam cleaning: assembly



A Insert the handle (1) onto the main body (7).

B Insert one of the screws (supplied) into the hole in the lower cord storage hook (5) and rotate until tight.

Insert the other screw (supplied) into the side of the handle (on the opposite side to the lower cord storage hook) and rotate until tight.

NOTE: Attaching the handle is necessary for first time assembly only.

C Lower the main body onto the floorhead (22), with the floorhead release button (21) on the neck of the floorhead to the back of the assembly, until it clicks into place.

D Insert the steam outlet nozzle at the bottom end of the handheld steam cleaner (9) into the adaptor at the bottom of the space in the front of the main body.

Push the handheld steam cleaner firmly into the space in the main body until it clicks into place.

E Attach the micro-fibre floor cloth (24) to the floorhead and tighten the toggle (25) at the rear.

Using in upright steam cleaning mode

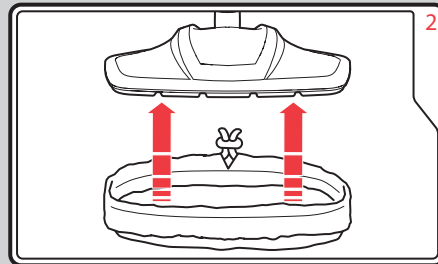
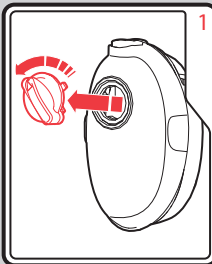
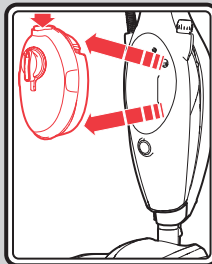
IMPORTANT: Before use, hardfloors should be thoroughly swept and carpets should be thoroughly dry vacuumed. However, we recommend that the steam cleaner is not used on:

- bare wooden floors or any surfaces where wood is exposed (as it will absorb moisture and may distort).
- damaged hardfloors or hardfloors with gaps present (as it will absorb moisture and may distort).

Also, do not keep the steam cleaner in one place for an extended period, because the continual heat may cause damage to carpets and some hardfloor types such as laminate flooring.

On wood and laminate flooring, do not make the floor overly wet - ALWAYS set the steam to minimum.

Please disconnect and allow the unit to cool on the cooling rest tray (26) before changing cloths and attachments.



Press the water tank release button (13) on the top of the water tank (17) to remove it from the handheld steam cleaner (9).

Remove the filler cap (15) by rotating it anti-clockwise to the 'unlock' position, then lift it out. Before filling, read the Anti-scale chapter on page 10.

Fill the water tank.

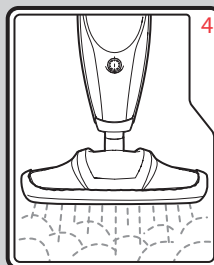
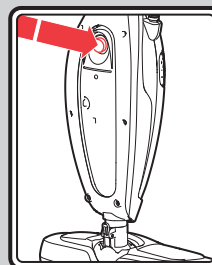
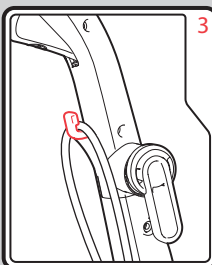
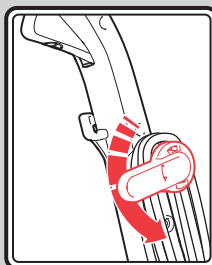
Replace the filler cap and turn it clockwise to the 'lock' position.

Replace the water tank.

NOTE: Insert the water tank, base first, then click the top into place.

Attach the micro-fibre floor cloth (24) to the floorhead (22), securing it in place by tightening the toggle (25).

NOTE: The cloth you choose and the floor type to be cleaned may affect how easy it is to push the steam cleaner across your floor surface.



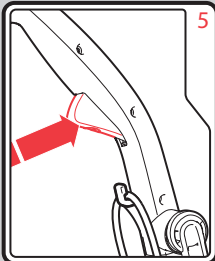
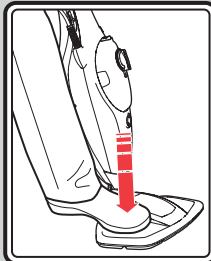
Rotate the upper cord storage hook (4) to quickly release the power cord (11).

Secure the power cord in the cord holder (3).

WARNING: Before switching ON, ensure the floorhead is located safely away from persons or animals.

Plug in at the mains outlet and switch on the steam cleaner at the On/Off power switch (16). The power indicator light (19) will illuminate and steam will be ready to be emitted after around 30 seconds (when the steam trigger (2) is pressed).

Using in upright steam cleaning mode (continued)

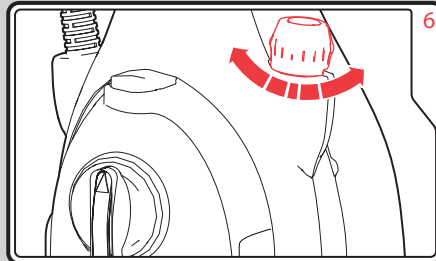


Place the floorhead (22) on the floor. Hold the floorhead to the floor with your foot and tilt the main body (7) back.

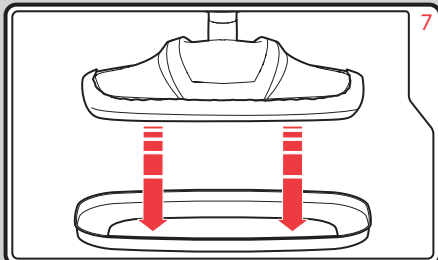
Turn the variable steam control (12) anti-clockwise as far as it will go to set to minimum steam. This will avoid over-wetting the floor and allow the floor to dry quickly (see point 6).

Squeeze the steam trigger (2) to release steam from the floorhead. This will take a few seconds. To avoid over-wetting the cloth and floor, only operate the steam trigger intermittently. The heat and moisture in the cloth should easily clean the floor. Excess steam will result in the floor taking longer to dry. Keep the floorhead moving whilst cleaning.

Never hold the cleaner in one spot for an extended period, see opening paragraph on page 6.

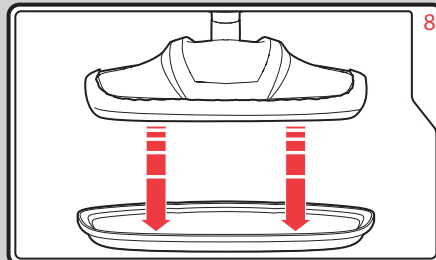


Adjust the variable steam control (12) to the required setting. Turn anti-clockwise for minimum steam, clockwise for maximum steam.



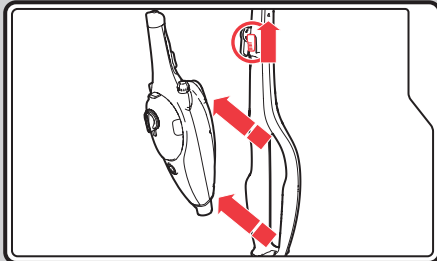
If cleaning carpet, rest the floorhead (22) with the micro-fibre floor cloth (24) attached into the carpet glider (23) to make it easier to move the floorhead across the carpet.

NOTE: The carpet glider is designed to make it easier to move the floorhead across the carpet and is intentionally a loose fit on the floorhead.



When carpet cleaning is complete, remove the carpet glider (if used) and rest the floorhead (22) with micro-fibre floor cloth (24) attached into the cooling rest tray (26). The cooling rest tray catches any residual heat or moisture emitted from the floorhead to ensure it will not affect the surface. Once cooled, remove the micro-fibre floor cloth and wash and air dry it (see 'Cleaning the cloths' under the 'Maintenance' section on page 11).

Using the handheld steam cleaner



This function is ideal for cleaning vertical surfaces and hard to reach places.

Separate the handheld steam cleaner (9) from the main body (7) by sliding the handheld release button (6) upwards on the front of the main body.

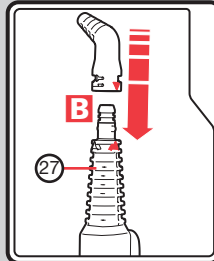
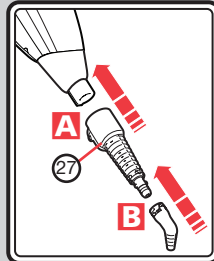
Pull the handheld steam cleaner up and out of the main body.

Adjust the variable steam control as required. For upholstery and window cleaning, use minimum steam. For the brushes and scraper, use maximum steam.

Operate the trigger under the handle to release the steam.

NOTE: If the trigger is continually held, the steam output will cycle higher and lower, this is normal.

CAUTION: After using the handheld steam cleaner, return the unit to the main body. The body of the handheld steam cleaner becomes warm in use, so should not be left on any delicate surfaces.



In order to use all of the accessories, the accessory adaptor (27) must firstly be attached onto the handheld steam cleaner (9). This can be done by completing the following:

A Slide the adaptor over the nozzle of the steam cleaner with the release catch on the adaptor facing the base of the handheld steam cleaner.

Align the keyway on the handheld steam cleaner with the release catch on the adaptor. Push together and fix into place.

B Attach the desired accessory to the end of the adaptor by aligning the arrow on the accessory with the right-hand arrow on the adaptor and twist the accessory until the arrow aligns with the left arrow of the two on the adaptor.

NOTE: handheld mode has been designed for one-handed use only.

Warning

WARNING: Switch OFF and unplug before changing attachments. After use, attachments will be very hot, allow to cool before handling.

WARNING: Steam can be emitted from the steam relief vents (18) on the rear of the product. Always keep this area clear of people, animals or delicate surfaces. Do not hold the product in this area. When using in the handheld mode, only ever hold the product by the handheld handle (8).

Never block any nozzle eg by holding against a surface being cleaned. If the nozzles are blocked, steam will be released from the steam relief vents.

Limescale build-up inside the boiler could also result in steam being emitted from the steam relief vents. Only ever use demineralised, deionised or distilled water to prevent limescale forming.

List of attachments for use on the handheld steam cleaner

Accessory adaptor (27) this attachment is the base attachment for all handheld accessories supplied with the product.

It can also be used alone to clean places or crevices that are not easily accessible.

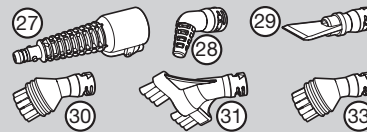
Angled nozzle attachment (28) to clean sanitary ware such as toilet bowls, taps or drain covers. Point it directly at non-permanent stains on carpets or upholstery whilst holding a clean cloth near the stained area to capture any loosened dirt.

Spatula attachment (29) to remove stubborn deposits, or to help de-ice the refrigerator or freezer.

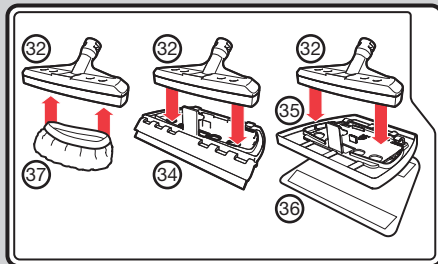
Circular brush attachment (30) to remove stains on room-temperature surfaces, such as tiles, wheel trims, mirrors and windows.

Long brush attachment (31) to remove dirt from grooves and crevices.

Circular brass brush attachment (33) (certain models only) to remove stubborn stains. Use only on hard metal surfaces, eg. stainless steel.

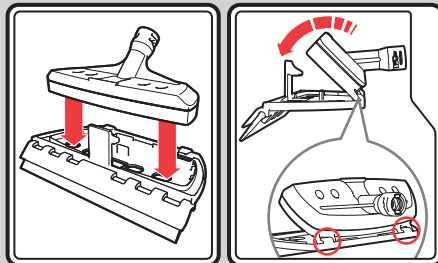


Utility attachment (32) once attached to the accessory adaptor (27), the utility attachment is the base attachment for attaching all the following accessories:

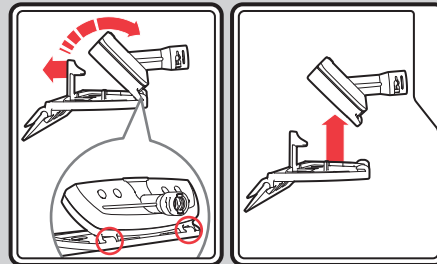


Elasticated utility cloth (37) for covering the utility attachment when cleaning upholstery and bedding.

Squeegee attachment (34) can be attached to the utility attachment by inserting the hooks at the back of the squeegee attachment into the loops on the back of the utility attachment, then secure the front of the utility attachment into the locking clip on the top of the squeegee attachment (as shown).



Remove the squeegee after use by holding the locking clip forward. The utility attachment should still be hooked into the loops on the rear of the squeegee attachment, pivot the utility attachment up and unhook from the loops to lift it away.



The squeegee attachment is ideal for cleaning tiled or glass areas such as windows or mirror panels. To clean windows, start at the top, press the squeegee to the surface and drag downwards in straight passes from top to bottom. Wipe the rubber blade and the bottom edge of the window dry after each pass. For small window panels, remove the squeegee tool and spray the steam directly onto the surface. Use the squeegee separately to wipe away the moisture.

WARNING: Do not use on very cold glass, as the sudden temperature change may crack the glass.

Flat cleaning head (35) with flat cleaning cloth (36) attached attaches to the utility attachment (using the same method as attaching and unattaching the squeegee attachment, as shown on the left and above). This accessory is useful for cleaning tiled or glass surfaces, cabinets and worktops in kitchens and bathrooms, plus upholstery, curtains, blinds, pillows and mattresses.

The water tank

The brass ball weight (20)

The brass ball weight inside the water tank is attached to the end of the suction hose. The ball is weighted and designed to freely move around the water tank depending on the position of the product. If the ball does get stuck outside the water level, gently shake the product until it comes free. The ball must remain in the water so steam can be generated whenever the steam trigger is pressed regardless of the orientation of the handheld steam cleaner.

Anti-scale

Limescale

Tap water contains minerals which can result in a build-up of limescale in the boiler. This can severely affect the steam output. The anti-scale cartridge (14) treats the water before it enters the boiler to minimise the effects of these minerals, but after a maximum of three months use, it will lose its effectiveness and must be replaced. This should be reduced further in areas of very hard water or if the cleaner is used extensively.

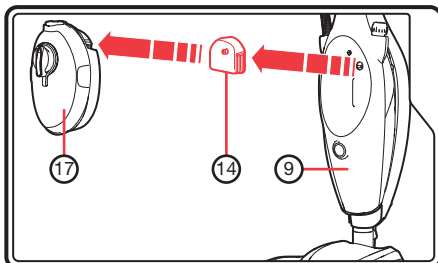
To prevent limescale build-up in the boiler, never fill the steam cleaner's water tank with anything other than deionised, demineralised or distilled water (available from most leading supermarkets). The use of the correct water is an additional precaution that should be taken to ensure the performance of the boiler is maximised.

Removal of the anti-scale cartridge (14)

1. Remove the water tank (17) as described in step 1 of 'Using in upright steam cleaning mode' on page 6.

You will find the anti-scale cartridge (14) attached to the handheld steam cleaner (9) in the recess where the water tank was located.

2. Grip each side of the anti-scale cartridge (14) and pull forward to remove.



3. Replace with the new anti-scale cartridge, pushing firmly into place. Replacement cartridges can be purchased by calling our UK helpline directly on: 0844 873 0726 or logging onto www.morphyrichards.com.
4. The resin crystals within the cartridge are a mild irritant. Do not break open the cartridge.



5. Dispose of the used anti-scale cartridge with your household waste.

After use

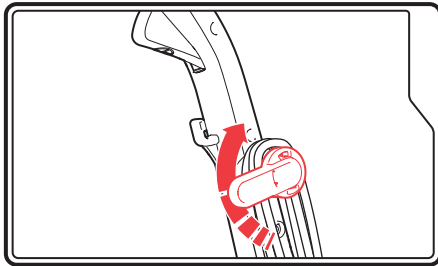
Follow the two maintenance steps below after every use.

1. Switch the cleaner off and unplug from the socket. Remove the carpet glider (if used) and rest the floorhead (22) with micro-fibre floor cloth (24) attached into the cooling rest tray (26). The cooling rest tray catches any residual heat or moisture emitted from the floorhead to ensure it will not affect the surface. Wait until the cleaner has cooled down completely. Once cooled, remove the micro-fibre floor cloth and wash and air dry it (see 'Cleaning the cloths' under the 'Maintenance' section on page 11).
2. Empty the water tank (17) by removing the filler cap (15) and pouring out the water. Allow the inside of the water tank to dry out before replacing the filler cap.

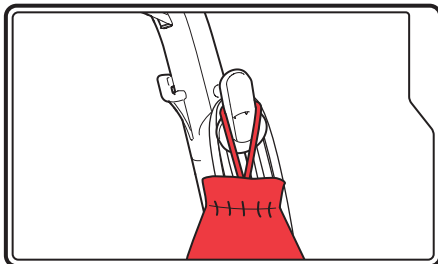
Storage

Store the steam cleaner in the cooling rest tray (26). The cooling rest tray catches any residual heat or moisture emitted from the floorhead to ensure it will not affect the surface. Remove the micro-fibre floor cloth (24) and wash and air dry it (see 'Cleaning the cloths' under the 'Maintenance' section on page 11).

Wrap the cord around the two cord storage hooks (4/5), rotating the upper storage hook (4) upwards to secure the power cord (11) in place.



Put all accessories into the accessory bag (38) and hang the bag from the upper cord storage hook.



Maintenance

WARNING: Always unplug the Steam cleaner from the mains supply before undertaking any maintenance procedures.

Overall maintenance

Your cleaner is manufactured to withstand normal day-to-day use, but an occasional wipe over with a damp cloth will help maintain it. Abrasive cleaners should not be used.

Cleaning the cloths

The micro-fibre floor cloth (24), elasticated utility cloth (37) and the flat cleaning cloth (36) can all be machine washed (40°C max). For heavy soiling, soak the cloths in warm water and detergent or a mild stain remover.

IMPORTANT: Do not use bleach or fabric softener.

Allow cloths to completely dry before storing.

Replacement cloths can be purchased by calling our UK helpline directly on: 0844 873 0726 or logging onto www.morphyrichards.com.

Maintaining the attachments

Dirt and blockages should be regularly removed from the attachments to help prolong their usage.

Contact us

Helpline

If you are having a problem with your appliance, please call our Helpline, as we are more likely to be able to help than the store you purchased the item from.

Please have the product name, model number and serial number to hand when you call to help us deal with your enquiry quicker.

UK Helpline: 0844 871 0960

IRE Helpline: 1800 409 119

Spares: 0844 873 0726

Talk To Us

If you have any questions or comments, or want some great tips to help you get the most out of your products, join us online:

Blog: www.morphyrichards.co.uk/blog

Facebook: www.facebook.com/morphyrichardsuk

Twitter: www.twitter.com/loveyourmorphy

Website: www.morphyrichards.com

