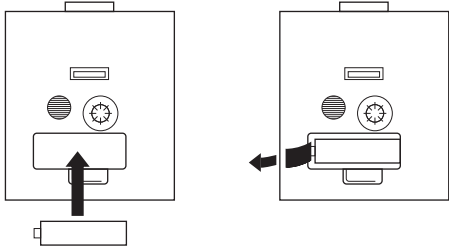


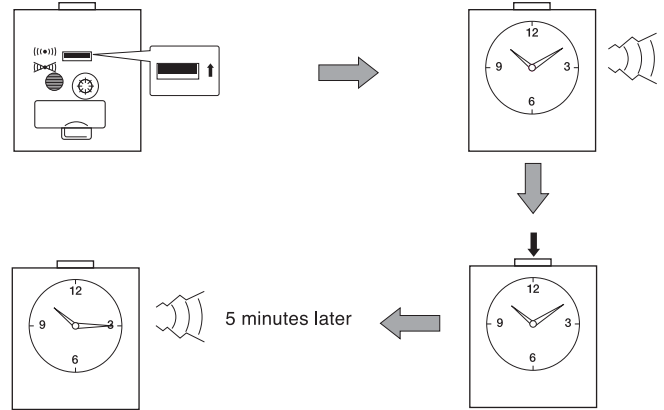
How to start

- Install the battery or remove the insulator according to the type of your clock.



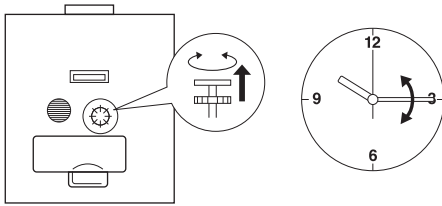
Remarks: The quantity, type, size and insert direction of batteries may differ depending on the model.

How to set the "Snooze" alarm

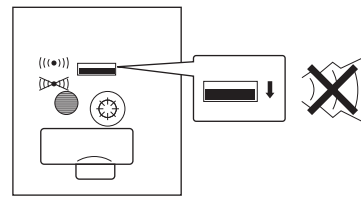


- The snooze function works for about 40 minutes.

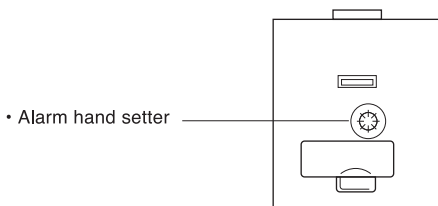
How to set the time



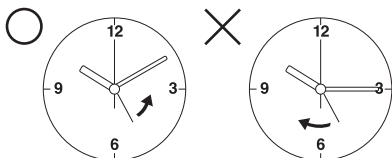
How to disengage the alarm



How to set the alarm time

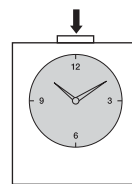


- Alarm hand setter



- To set the alarm time, be sure to turn **the alarm hand** counterclockwise.

How to illuminate the dial



- While a the button is pushed, the dial is illuminated.

Battery life

- Approx. 10 months.

For replacement of the batteries included in your new Seiko Clock, please use Alkaline type batteries where it is indicated for "Alkaline Battery" on the battery holder, which will offer approximately 10 months of battery life.

Depending on the item, the battery initially supplied may not have a battery life of 10 months.