

INSTRUCTIONS FOR USE



White Knight
eco 43A

The LOW CARBON Dryer

**FOR USE IN THE UNITED KINGDOM AND IRELAND
WITH NATURAL GAS ONLY**

IMPORTANT

PLEASE READ THESE INSTRUCTIONS THOROUGHLY
BEFORE USING THIS APPLIANCE.

KEEP THEM IN A SAFE PLACE FOR FUTURE
REFERENCE.

SECTION 1: BEFORE USE

*** Safety warnings**

These notes are provided in the interest of safety. You must read them before installing or using the appliance.

- This tumble dryer is intended for **NORMAL DOMESTIC USE ONLY**.
- The dryer must be installed by a Registered Installer.
- Any electrical work required to install the appliance should be carried out by a qualified person.

SECTION 1: BEFORE USE

*** User Information**

- The tumble dryer should be serviced by an appointed service organisation and only genuine parts used.
 - It is recommended that the dryer be serviced annually by a person competent to service gas fired tumble dryers.
Under no circumstances should you attempt to repair the appliance yourself. Repairs carried out by inexperienced persons may cause serious injury. Consult your local appointed service engineer and insist on genuine spare parts.
 - The special mains cable and plug assembly must only be replaced with a genuine part available from the manufacturer or service agent.
 - Keep the packing materials from your machine away from children to avoid hazards.
 - Keep pets away from your machine.
 - Your machine is designed for use in a domestic environment. The warranty will be invalid if you use it for commercial purposes.
- DO NOT** - use a two-way adaptor, or extension lead. The dryer must be connected to its own socket.
- DO NOT** - block the air inlets at the front and back of your dryer.
- DO NOT** - exceed the recommended maximum load.
- DO NOT** - place articles in the dryer if anything other than a water solution has been used in the cleaning process.
- DO NOT** - dry unwashed items in the tumble dryer.
- DO NOT** - attempt to dry dripping wet articles.

DO NOT - use the tumble dryer if you suspect that it is damaged in any way.

- **WARNING:** Never stop a tumble dryer before the end of a drying cycle unless all items are quickly removed and spread out so that heat is dissipated.
- Clean the lint filter after each drying cycle or the restrictions to airflow will extend drying times and could cause the limit thermostat to stop the burner firing for the remaining part of the drying cycle. This will require the appliance being restarted.
- Under no circumstances should anything other than the recommended articles be placed in the tumble dryer.
- It is dangerous to alter or modify the product in any way other than fitting authorised accessories.
- The rear of the dryer gets quite hot during use. Position the dryer so that the back is not accessible while in operation.
- **DO NOT** - allow fluff to accumulate around the tumble dryer. It is important to clean fluff from the window of the dryer and around the door seal after each drying cycle. Failure to do so could result in water leaking.
- This appliance can be used by children aged from 8 years and above and persons with reduced physical, sensory or mental capabilities or lack of experience and knowledge if they have been given supervision or instruction concerning use of the appliance in a safe way and understand the hazards involved. Children shall not play with the appliance. Cleaning and user maintenance shall not be made by children without supervision. Children of less than 3 years should be kept away unless continuously supervised.

- Items that have been soiled with substances such as cooking oil, acetone, alcohol, petrol, kerosene, spot removers, turpentine, waxes and wax removers should be washed in hot water with an extra amount of detergent before being dried in the tumble dryer.
- Remove all objects from pockets such as lighters and matches.
- **DO NOT** – allow children to tamper with the controls and keep the away from the dryer when it is in operation.
- **DO NOT** – place articles in the dryer if anything other than a water solution has been used in the cleaning process.
- **DO NOT** – attempt to dry dripping wet articles or items containing foam rubber or rubber-like material.
- **DO NOT** - place items contaminated with inflammable substances in the dryer, such as petrol, cleaning solvents, cooking oil fat, or hair lacquer. This can cause fires. For the same reason, do not dry rubber, foam rubber, plastic or paper
- We suggest a fabric conditioner to be used to reduce static electricity.
- Fabric softeners, or similar products, should be used as specified by the Fabric Softener instructions.
- Items such as foam rubber (latex foam), shower caps, waterproof textiles, rubber backed articles and clothes or pillows fitted with foam rubber pads should not be dried in the tumble dryer.
- Do not tumble dry woollen or wool mixture articles unless the article is labelled to be. This should avoid shrinkage.
- Place delicate articles e.g. tights, scarves, inside a pillowcase.

- To avoid the need to iron easycare polyester/cotton items it is better to only dry small loads (i.e. half fill drum).
- It is better to dry small and large articles together.
- Do not overload the dryer or dry large bulky items such as duvets or sleeping bags as it is important that the airflow through the dryer is not obstructed.
- We recommend that the appliance is unplugged each time after use. It should always be disconnected from the electricity supply if it is to be left unattended for long periods (i.e. weekends, holidays etc).
- Adequate ventilation has to be provided to avoid the back flow of gases into the room from appliances burning other fuels, including open fires.

WARNING: The appliance must not be supplied through an external switching device, such as a timer, or connected to a circuit that is regularly switched on and off by a utility.

SECTION 1: BEFORE USE

- * Safety warnings
- * User Information

SECTION 2: INSTALLATION

- * Venting
- * Prior to Installation
- * Positioning and Air Supply
- * Final Installation

SECTION 3: TECHNICAL SPECIFICATIONS

SECTION 4: CONTROL PANEL

- * The Timer
- * Heat Switch
- * Heater Neon
- * Start Button

SECTION 5: DRYING YOUR LAUNDRY

- * Before Drying
- * Drying
- * After removing the dried clothes

SECTION 6: ADDITIONAL INFORMATION

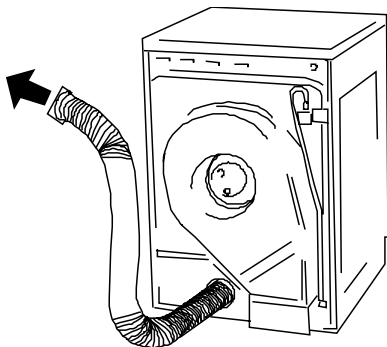
- * Any Problems?
- * Optional Extras

SECTION 7: DOOR REVERSAL

SECTION 2: INSTALLATION

*** Venting**

For a safe and reliable installation please refer to the installation and service booklet.



Fixed Rear Venting.

Venting through a hole at the bottom of the back panel. A vent hose must always be used to vent the warm damp exhaust air.

The best solution is to make a permanent connection through either a wall or a window. This is particularly recommended for small, cool rooms and a kit for this purpose is available as an accessory.

***Venting**

When using the vent hose, remember the following points:

- The vent hose must be at least 10cm (4ins) in diameter.
- No more than three right-angled bends should be allowed when positioning the vent hose.
- Do not distort or constrict the vent hose as this will reduce the airflow.
- The vent hose must not be shared with other appliances, for example, a cooker hood outlet.
- When drying, the vent hose must always be extended through an open door or window.

*** Prior to Installation**

Check that the local distribution conditions, nature of gas, pressure and adjustment of the dryer are compatible.

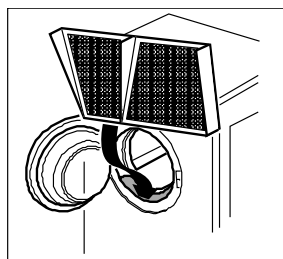
*** Positioning and Air Supply**

The dryer must not be placed in a bedroom, bathroom, shower room, or locations where concentrations of flammable vapours may accumulate, but may be positioned against walls, other appliances, kitchen furniture and similar surfaces. A venting hose must be used. For safe operation, the room in which the dryer is placed must have a good supply of fresh air. This must include an openable window or equivalent which must always be open during the drying cycle.

The appliance must not be installed behind a lockable door, a sliding door or a door with a hinge on the opposite side to that of the tumble dryer.

*** Final Installation**

Place the filter in its operating position as shown in the diagram. For cleaning the filter refer to Section 5: Drying your laundry.



If you wish to change the side on which your door opens, see **Section 7 - Door Reversal**. Remove any dust by wiping the drum and door with a damp cloth. Any initial smell of burning will be caused by dust on the heater and will quickly disappear. Position the tumble dryer so that the plug remains accessible after installation.

SECTION 3: TECHNICAL SPECIFICATIONS

Overall Dimensions:

Height: 85 cm Width: 59.5 cm Depth: 58 cm

Maximum Dry Weight Loads:

Cotton 7kg, 'Easycare' polyester/cotton 7kg (for minimum creasing 3kg) Delicates 7kg

Heat Input – 3kW gross

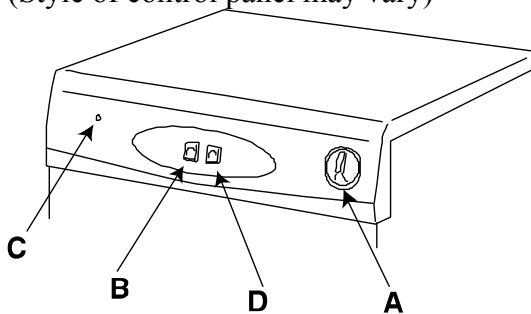
The gas rate in cubic meters per hour in relation to the calorific value of the G20 gas to be used in the appliance is 0.285m³/hr”.

The appliance must be used with the vent hose provided. The vent hose must not be extended with a secondary hose. The hose must not be longer than 2.4m nor must it contain more than 3 90 degree turns. If these limits are exceeded the resistance of the exhaust duct will exceed the designed parameters.

For electrical and gas ratings see plate on back of dryer. For Model type see serial plate inside door. (Needed when requesting service). Room temperature range 5°C to 30°C. Your washing machine should have a spin speed of not less than 1000rpm.

SECTION 4: CONTROL PANEL

(Style of control panel may vary)







- *A - The Timer - Select the required drying time based on the recommendations printed around the timer.
- *B - Heat Switch - Select the required heat setting based on the recommendations printed around the timer.
- *C - Heater Neon - When lit shows that gas is heating the machine.
- *D - Start Button - Press to start the machine

SECTION 5: DRYING YOUR LAUNDRY

* **Before Drying** - Check care labels inside the garments

CARE LABELS YOU MAY FIND ON YOUR FABRICS

	Suitable for tumble drying
	Tumble dry using full heat
	Tumble dry using half heat
	Do not tumble dry

* **Drying**

When starting the dryer for the first time, or starting after temporary disconnection from the gas supply, air in the pipes will prevent ignition. To clear this air, the dryer must be started by turning the timer to a setting of at least 30 minutes. Allow the dryer to operate for 1/2 minute before stopping the dryer. Repeat this process until continuous burning of the gas is indicated by the neon light on the control panel.

- Open a nearby window to allow for the circulation of fresh air, even if using a vent hose.
 - Open the dryer door.
 - If drying sheets, load before other items, starting with one corner.
 - Load clothes loosely into the drum.
 - Close the dryer door.
 - Dry your hands.
 - Check that the timer is in the '0' position.
 - Plug in the machine.
 - The appliance is not to be operated without the lint filter in place
- Select correct heat setting (see programme chart around timer for recommendations).
The standard cotton programme is suitable to dry normal wet cotton laundry. It is the most efficient programme in terms of energy consumption for drying wet cotton laundry.

Your appliance is a reversing, small door opening dryer. A full load will typically take 125 minutes and will use approximately 1.91kWh of energy. A half load will typically take 70 minutes and will use approximately 0.98 kWh of energy.

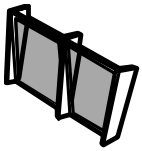
- Select the timer to the required time setting, press start button (see programme chart on control panel for recommendations).
- The drum will begin rotating. Reversing drum models will stop after approximately 5 minutes of normal operation to rotate the drum in the reverse (anti-clockwise) direction for 10 seconds. The dryer does not heat while rotating in the reverse direction.
- Should the clothes become dry before the cycle has finished, or if an excessive programme time has been selected, the drum will continue to rotate while the thermostat will automatically regulate the heater to reduce the risk of over-drying.
- There is an automatic 12 minute cool down period at the end of every cycle, during which the heater is switched off. This helps to minimize creasing, and must always be used fully to avoid the risk of fire.

NEVER SWITCH THE DRYER OFF AND LEAVE A HOT LOAD IN THE DRUM - RISK OF FIRE.

- When drying large items such as sheets, we suggest you periodically stop the dryer to redistribute the load, and restart it immediately afterwards.
 - To stop the machines during the middle of the programme simply open the door; the drum will stop rotating automatically. To start the machine - close the door and press the start button.
 - To lengthen or shorten a timed programme, open the door, reset the timer knob, close the door and press the start button.
- To lengthen or shorten a timed programme, reset the timer knob.

* **After removing the dried clothes**

ALWAYS CLEAN THE FILTER. Failure to clean the filter will extend drying times and could cause the safety cut-out to operate.



- Pull the filter upwards and away from the appliance
- Remove any threads or fluff by hand or with a soft brush.
- Slide the filter back.
- Wash the filter occasionally in detergent solution and with a soft brush to remove small particles.
- If your filter becomes damaged, replace it to ensure no damage is caused to the dryer.

SECTION 6: **ADDITIONAL INFORMATION**

*** Any Problems?**

If the clothes are not dry after normal drying time:

- Check that you used the correct heater setting.
- Check that you have not set the timer within the cool down period.
- Check that the lint filter has been cleaned. A blocked filter will restrict the airflow.
- Check that the venting system is clear, and the front air inlet is not blocked.
- Ensure the dryer is not overloaded. Restart the appliance with the timer on full time and the heat switch on the high setting and observe the neon remains lit for more than one minute. If the neon goes out within the minute wait a further three minutes before stopping and restarting the appliance by opening and closing the door and pressing the start button. Observe the neon remains lit for more than one minute and the appliance continues to heat throughout the cycle (the window remains warm) and the clothes are dry at the end of the cycle.

If all these points are checked and the laundry is still not dry, call for a service engineer.

If your machine does not work check the following before calling a service engineer:

- Check that there is a supply of electricity.
- Check that the machine is switched on and the door properly closed.
- Check the fuse in the moulded plug.

A call out charge will be applied for a service visit, if the call could have been avoided by following these instructions.

ESSENTIAL CONTACT INFORMATION FOR “IN GUARANTEE” AND “OUT OF GUARANTEE” REPAIRS.

If problems continue after checking the above points you should **contact our service agent**. Please ensure that you have your serial number and model number to hand when you make the call. To locate the serial number on your dryer, open the door and look for a white label inside the door opening. This will indicate the appliance model number along with the serial number.

APPROVED SERVICE AGENTS:

White Knight (Whirlpool) 0800 988 1323 (calls are free from landlines however calls from mobiles may be charged at your network provider's rates)

OR

White Knight (0800 Repair): 0344 8797422 (Calls charged at basic rate).

Northern Ireland Only: (Service Network 2000) 028 90365222 (Daytime calls cost up to 14p plus 8p per minute from BT lines Monday-Friday. Mobile and other providers' charges may vary).

***Optional Extras**

Restraining Kit - To prevent damage to the gas connection should you move the dryer.

Vent Hose - Leads the warm damp air to an open door or window.

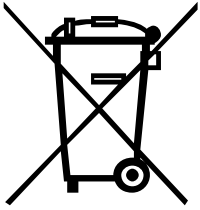
Wall/Window Vent Kit - To make a permanent connection through a wall or window.

Stacking Kit - To enable your dryer to be secured onto the top of a front loading washing machine (to save floor space).

The above items can be purchased as accessories for your tumble dryer from your supplier.

Instructions for stacking, if required, are supplied with the stacking kit.

THIS APPLIANCE MUST BE EARTHED



This appliance is marked according to the European Directive 2012/19/EU on Waste Electrical and Electronic Equipment (WEEE).

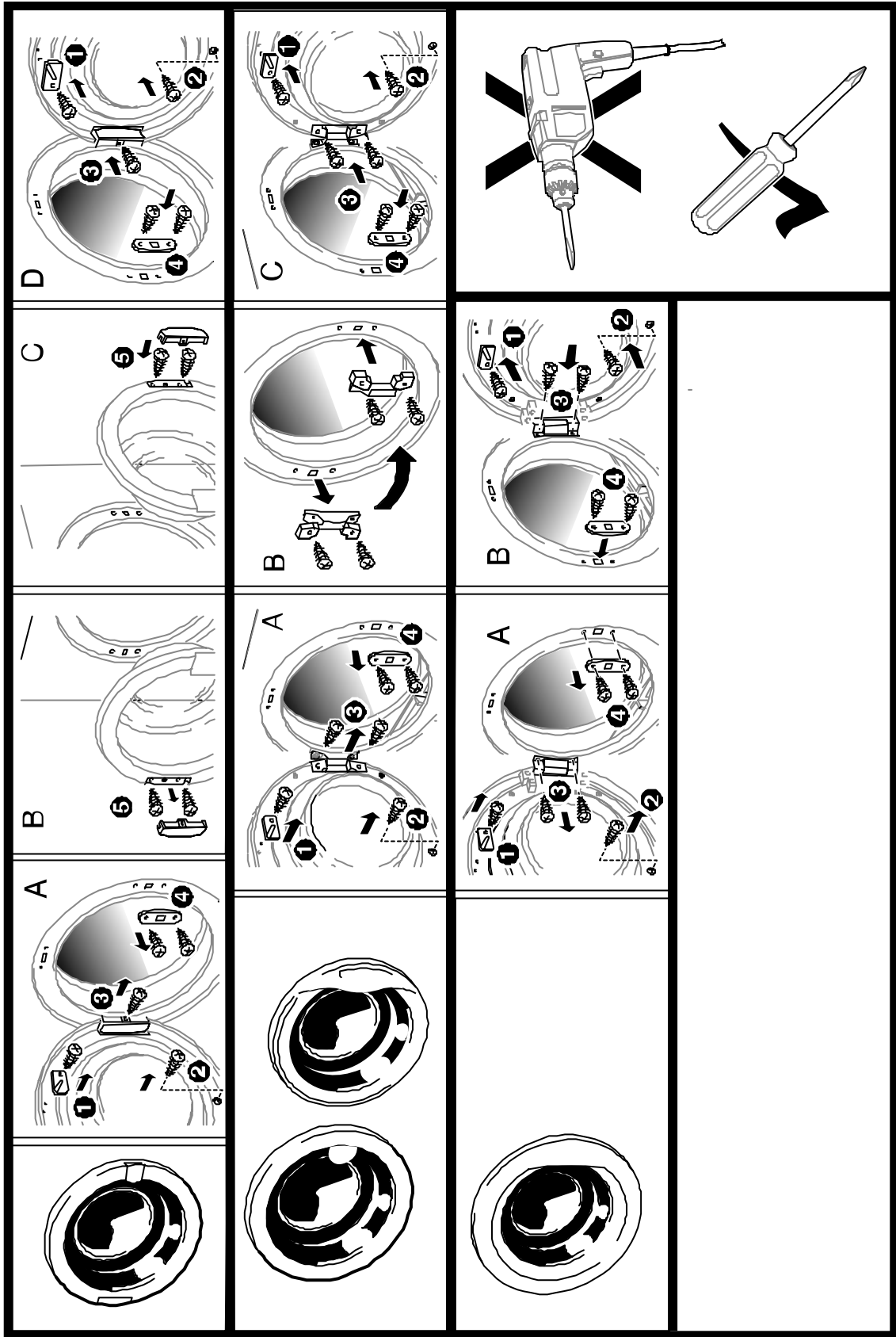
At end of life this product should be recycled and not disposed in household waste.

Contact your retailer, council or local authority for further information.



	Gas SDO Rev
Suppliers name or trade mark	WHITE KNIGHT
Model identifier	437, 439, 43A, 517 - TYPE
Rated capacity at full load	7kg
Appliance type	Gas
Energy efficiency class	A+
Energy consumption of the appliance*	256kWh
The figures above is based on 160 drying cycles of the standard cotton programme at full and partial load and the consumption of the low-power modes. Actual energy consumption per cycle will depend on how the appliance is used.	
Automatic/non-automatic	Non-automatic
EU Ecolabel	N/A
E_{dry}	1.91kWh
$E_{dry\frac{1}{2}}$	0.98kWh
$E_{g_{dry}}$	4.30kWh
$E_{g_{dry\frac{1}{2}}}$	2.20kWh
$E_{g_{dry,a}}$	0.50kWh
$E_{g_{dry\frac{1}{2},a}}$	0.26kWh
Off mode power (P_o)	0.03W
Left on mode power (P_l)	0.03W
Duration of left-on mode	N/A
The standard cotton programme used at full and partial load is the standard drying programme to which the information in the label and the fiche relates. This programme is suitable for drying normal wet cotton laundry. It is the most efficient programme in terms of energy consumption for cotton.	
T_t	94mins
T_{dry}	125mins
$T_{dry\frac{1}{2}}$	70mins
Condensing efficiency class	N/A
C_t	N/A
C_{dry}	N/A
$C_{dry\frac{1}{2}}$	N/A
Sound power level	62dBA
Built in/not built in	This appliance is not intended to be built in.

REVERSING THE DOOR OPENING



SELECT DOOR TYPE

Manufactured by: Crosslee plc. Hipperholme, Halifax, West Yorkshire HX3 8DE

4213 194 12393