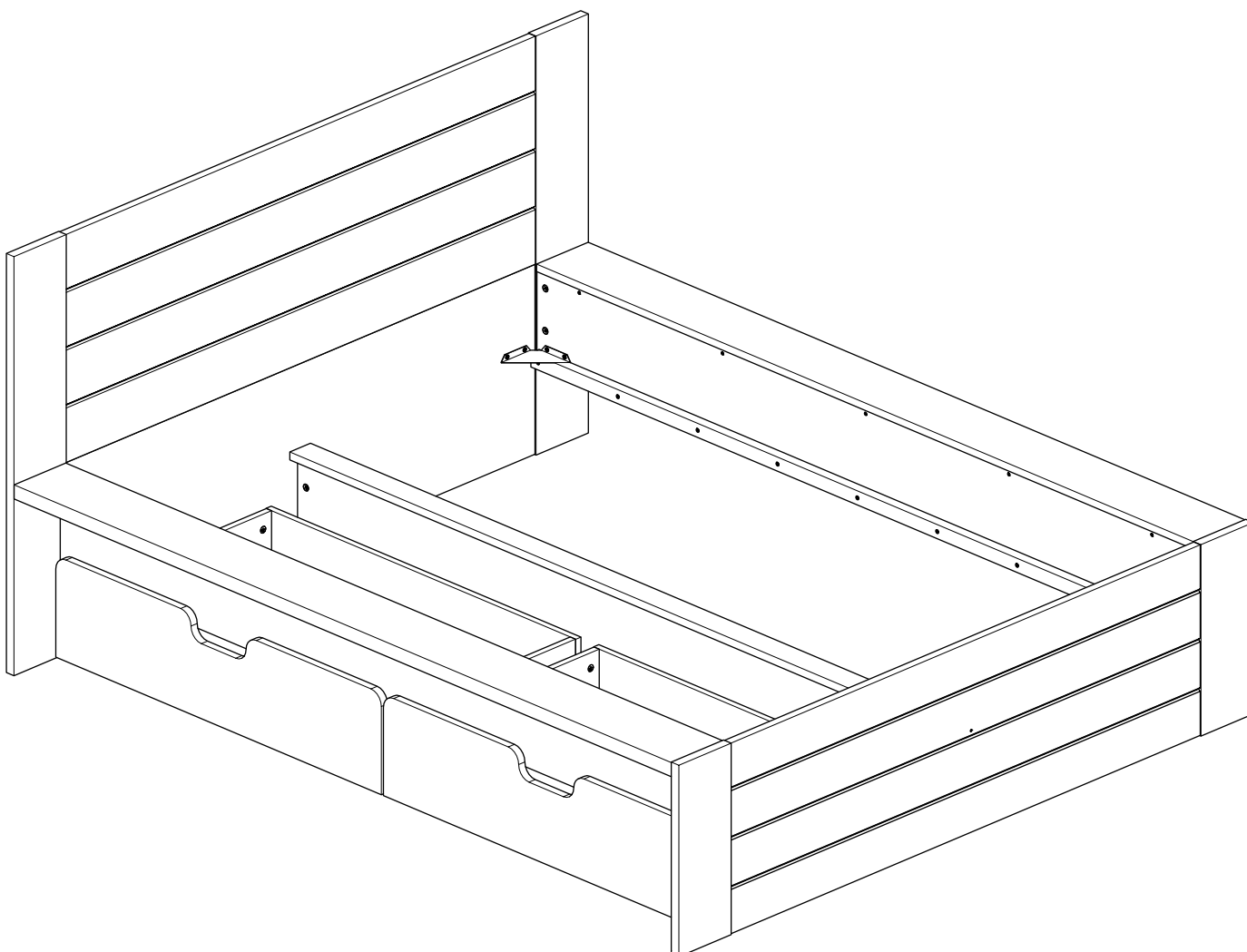


# Seattle 4Ft6

Assembly Instructions Please keep for future reference

2177450

2376000



## Dimensions

Width - 166,9cm  
Depth - 195,4cm  
Height - 95,0cm

**Tip : To prevent damage,  
we recommend that you  
build your unit on the  
carton(s) it was packed in.**

**Important – Please read these instructions fully before starting assembly**

If you need help or have damaged or missing parts, call the **Customer Helpline:**  
**03456 400 800**



# Safety and Care Advice

**Important** – Please read these instructions fully before starting assembly

- Check you have all the components and tools listed on pages 2 and 3.
- Remove all fittings from the plastic bags and separate them into their groups.
- Keep children and animals away from the work area, small parts could choke if swallowed.
- Make sure you have enough space to layout the parts before starting.

- Do not stand or put weight on the product, this could cause damage.
- Assemble the item as close to its final position (in the same room) as possible.
- Assemble on a soft level surface to avoid damaging the unit or your floor.
- Parts of the assembly will be easier with 2 people.



• To reduce the likelihood of damaging your product please ensure that your power drill is set on a low torque setting.

- Dispose of all packaging carefully and responsibly.

## Glue safety - Take care when using glue, please follow the advice below

**Skin contact:** Remove contamination by washing with soap and water. This procedure should also be followed prior to eating and drinking.

**Eye contact:** Rinse immediately with clean water for 15 minutes and seek medical advice.

**If swallowed:** Seek medical advice immediately.

## Care and maintenance

- Only clean using a damp cloth and mild detergent, do not use bleach or abrasive cleaners.

- From time to time check that there are no loose screws on this unit.

- This product should not be discarded with household waste. Take to your local authority waste disposal centre.

## Handy Hints

- Assemble all parts and bolts loosely during assembly, only once the product is complete should you fully tighten the bolts

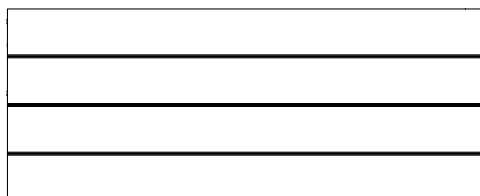
- Regularly check and ensure that all bolts and fittings are tightened properly.

**Note:** if required the next page can be cut out and used as reference throughout the assembly. Keep this page with these instructions for future reference.

# Components - Panels

If you have damaged or missing parts, call the  
**Customer Helpline: 03456 400 800**

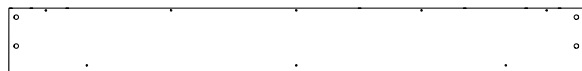
Please check you have all the panels listed below



**1** Head board  
(136,5x 51,7cm)  
FA2533



**2** Left & Right plinth x 2  
(191,0x15,0cm)  
FA2530



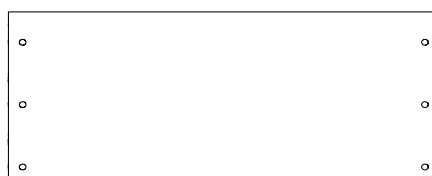
**3** Left & right rail X2  
(191,0x 22,0cm)  
P2040



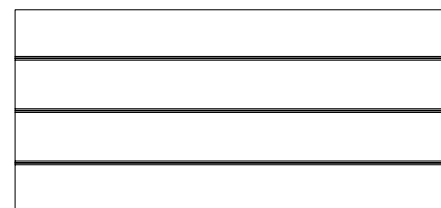
**6** leg head end right  
(95,0x 15,2cm)  
P6007



**7** leg head left side  
(95,0x 15,2cm)  
P6006



**4** Head pannel  
(136,5x 43,0cm)  
P2038



**5** Foot board  
(136,5x 43,2cm)  
FA2536



**8** leg foot right side  
(43,4 x 15,2cm)  
P6009



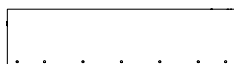
**9** leg foot left side  
(43,4 x 15,2cm)  
P6008



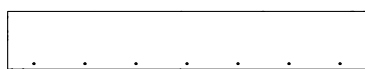
**10** Support rail X2  
(189,7x 3,2cm)  
MA2251



**11** Drawerfront x 2  
(94,6x 23,0 cm)  
P4105



**12** Drawer left & right side x 4  
(57,0x 14,5cm)  
P4107



**13** Drawer Back x 2  
(90,0x 14,5cm)  
P4109



**14** Drawer Base x 2  
(86,8x 57,0cm)  
P4110



**15** mid plinth  
(191,4x 6,0 cm)  
P7047



**16** mid rail  
(191,4x 22cm)  
P2042



# Components - Fittings

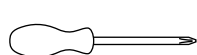
Please check you have all the fittings listed below

Note: The quantities below are the correct amount to complete the assembly. In some cases more fittings may be supplied than are required.

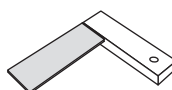
1/1

<p><b>A</b> Large locking nut x 68 (15x12mm)</p>	<p><b>B</b> Locking screw x 32 (5x24mm)</p>	<p><b>C</b> Wood dowel x 40 (8x30mm)</p>
<p><b>D</b> Backpanelscrew x 28 (4x15mm)</p>	<p><b>E</b> Carcase screw x 52 (4x40mm)</p>	<p><b>F</b> Wheel x 10</p>
<p><b>G</b> Chipboardscrew x 20 (3x15mm)</p>	<p><b>H</b> Glue x 1</p>	<p><b>I</b> Chipboardscrew x 18 (5x35mm)</p>
<p><b>J</b> Connecting plate x 3</p>	<p><b>K</b> Double locking screw x 18 (24/24mm)</p>	<p><b>L</b> Corner bracket x4</p>
<p><b>M</b> Chipboardscrew x 8 (4x25mm)</p>	<p><b>N</b> Wood dowel x 4 (5x30mm)</p>	

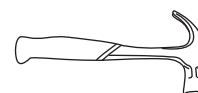
## Tools required



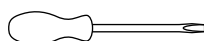
Phillips screwdriver  
(medium & large)



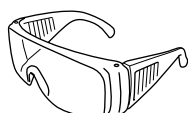
Setsquare



Small  
hammer



Flatblade screwdriver  
(medium)



Eye protection  
(when using a  
hammer or drill)

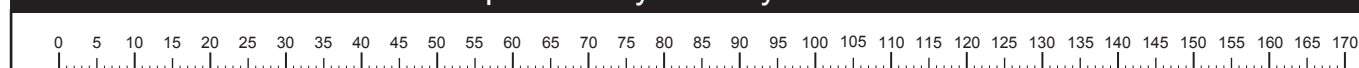


Ruler/tape  
measure



Scissors

## Ruler - Use this ruler to help correctly identify the screws



The screws length is measured from the head to the point (30mm screw shown).



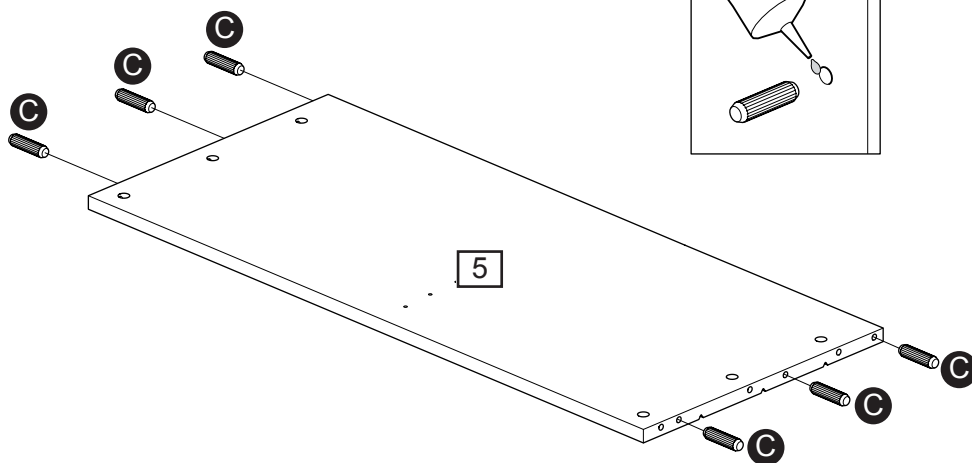
# Assembly Instructions

## Step 1

### Foot end assembly

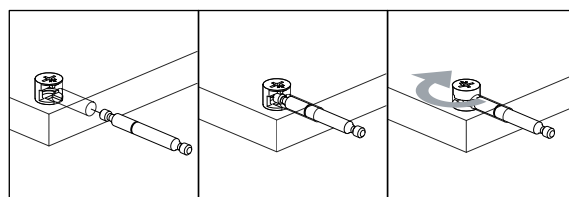
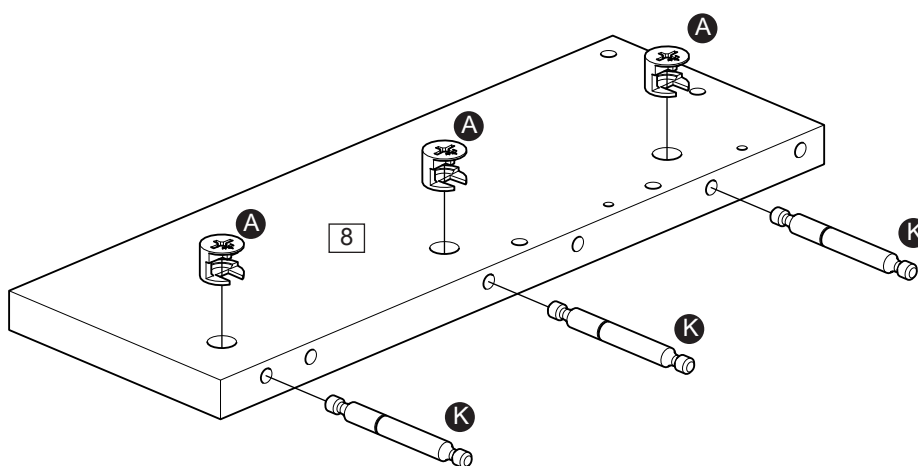
**a:** Insert 6x wood dowel **C** with a small amount of glue **H** into the holes of foot board **5**.

**a:**



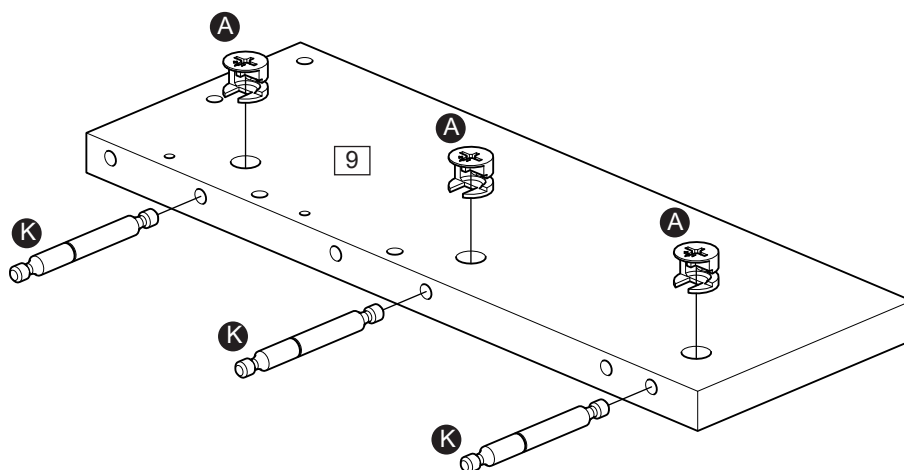
**b:** Insert 3x large locking nut **A** and 3x double locking into screw **K** into leg foot right side **8**. Use a screwdriver to turn 3x large locking nut **A** clockwise to lock.

**b:**



**c:** Insert 3x large locking nut **A** and 3x double locking into screw **K** into leg foot left side **9**. Use a screwdriver to turn 3x large locking nut **K** clockwise to lock.

**c:**



Continued on next page.

# Assembly Instructions

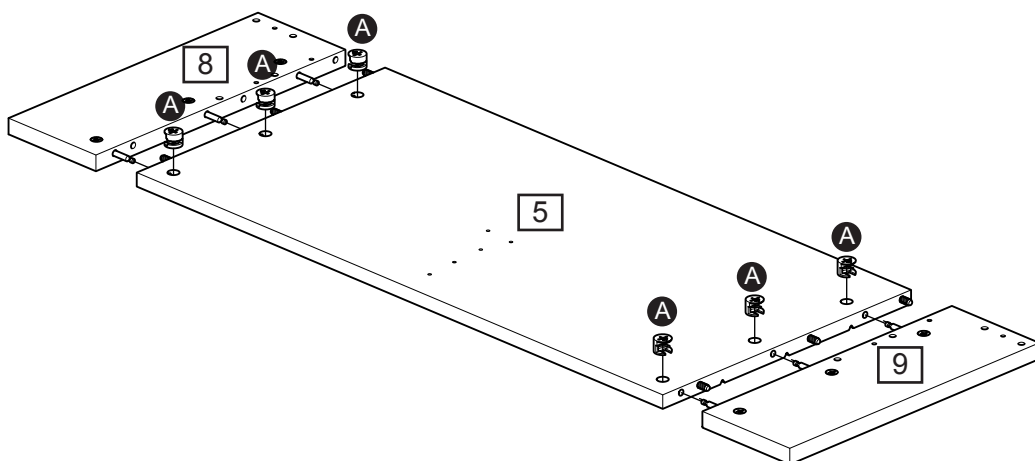
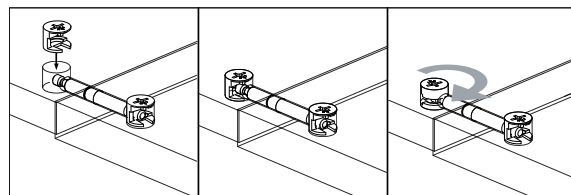
## Step 1 - continued

### Foot end assembly

**d:** Attach leg foot right side **8** and leg foot left side **9** on foot board **5** using 6x Large locking nut **A**.

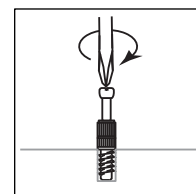
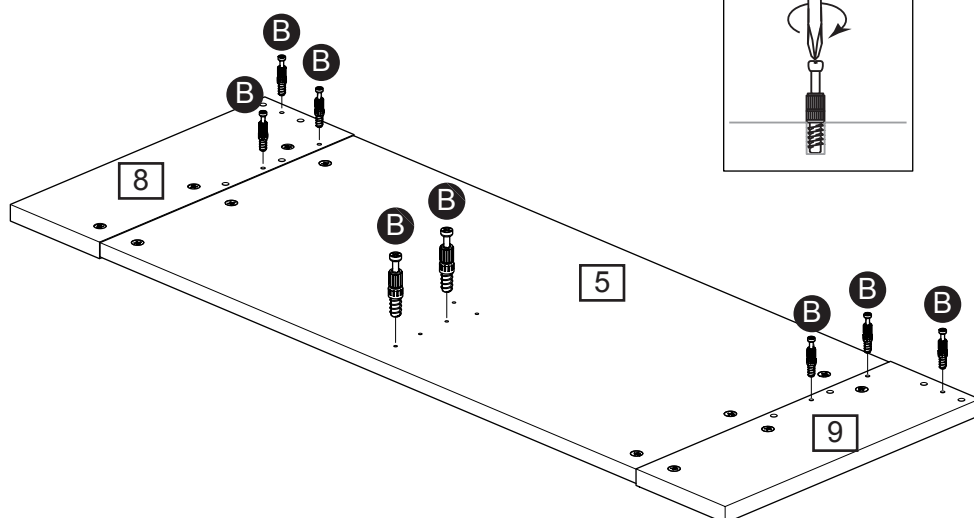
Use a screwdriver to turn 6x large locking nut **A** clockwise to lock.

**d:**



**e:** Screw 8x locking screw **B** into the holes on leg foot side right **8**, foot board **5** and leg foot side left **9**.

**e:**



## Step 2

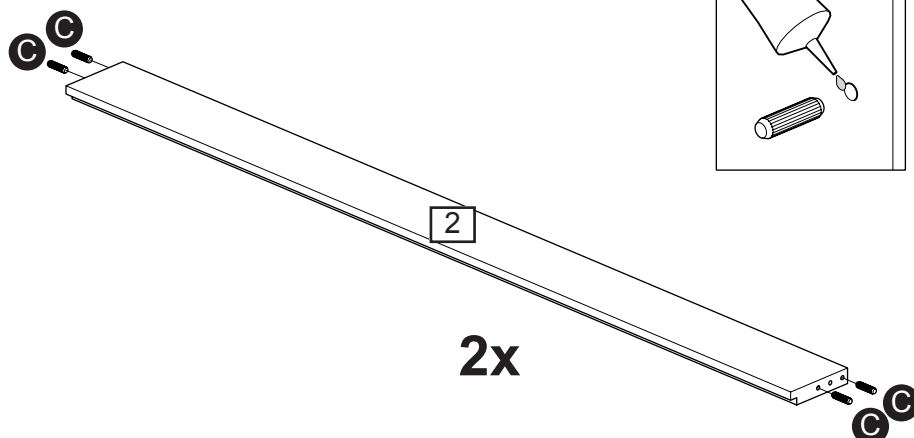
### Side assembly

next few steps must be done 2 times!  
(one assembly is left side other is right side.)

**a:** Insert 4x wood dowel **C** with a small amount of glue **H** into the holes of left & right plinth **2**.

Continued on next page.

**a:**

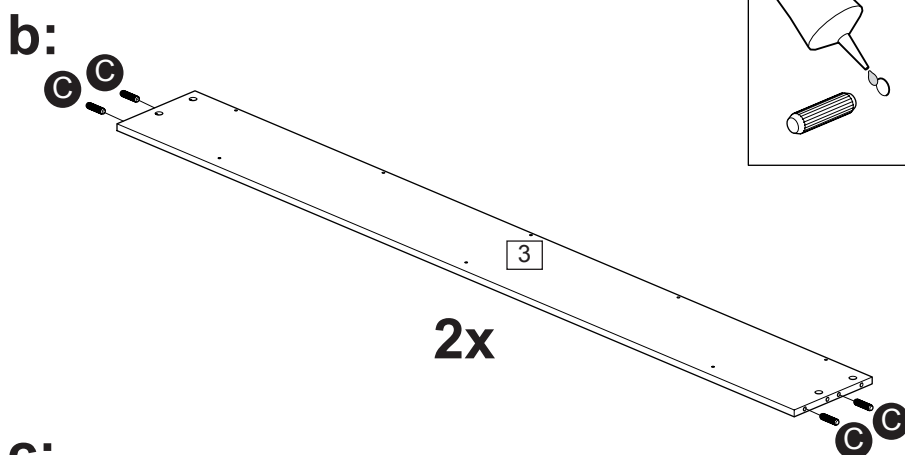


# Assembly Instructions

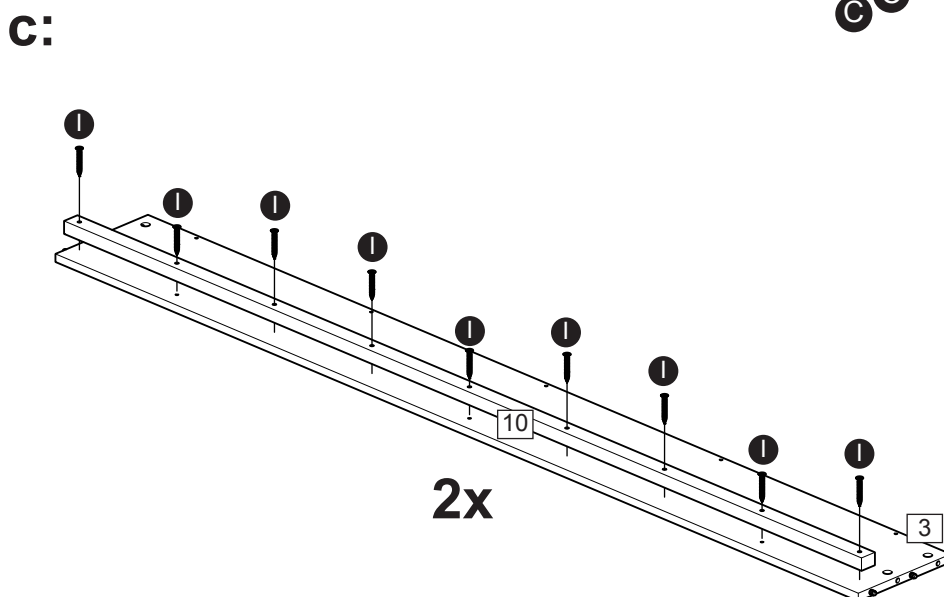
## Step 2 - continued

### Side assembly

**b:** Insert 4x wood dowel **C** with a small amount of glue **H** into the holes of left & right rail **3**.

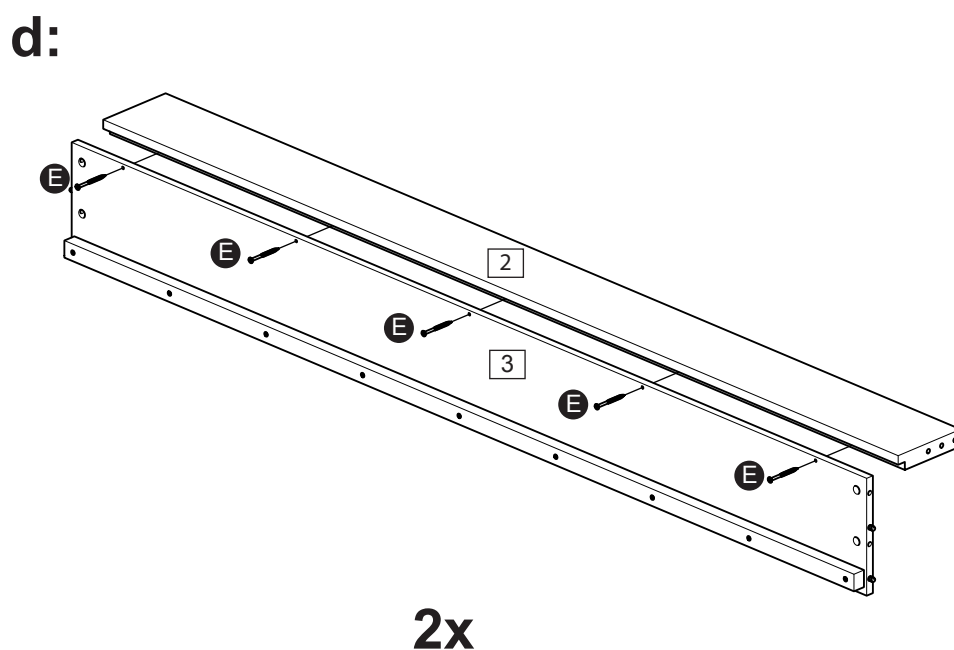


**c:** Attach support rail **10** with 9x chipboard screws **I** to left & right rail **3**.



**d:** Attach left & right plinth **2** with 5x carcass screw **E** to left & right rail **3**.

**Note:** This step requires 2 people.



# Assembly Instructions

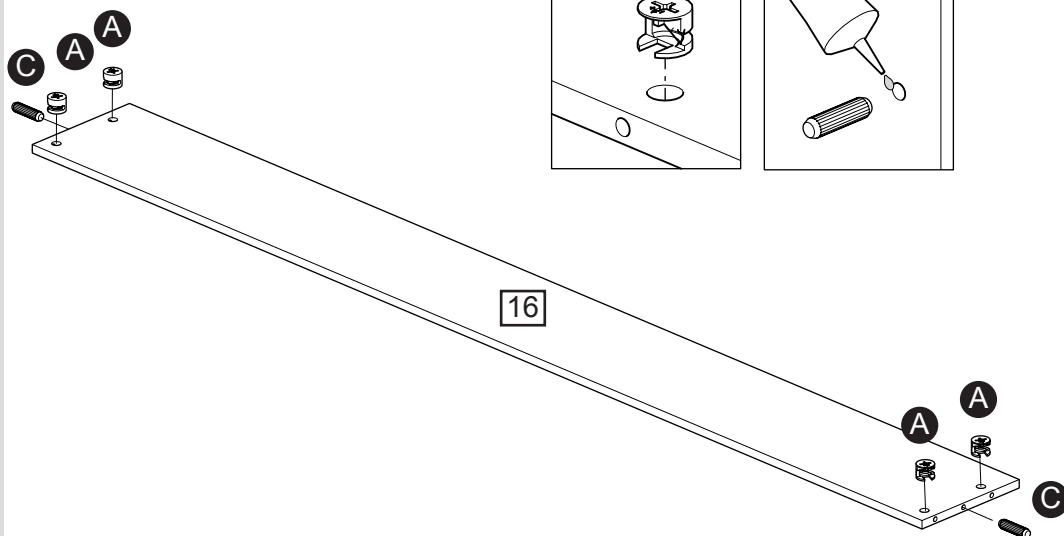
## Step 3

### Mid pannels assembly

**a:** Insert 2x wood dowel **C** with a smal amount of glue **H** into the holes of mid rail **16**.

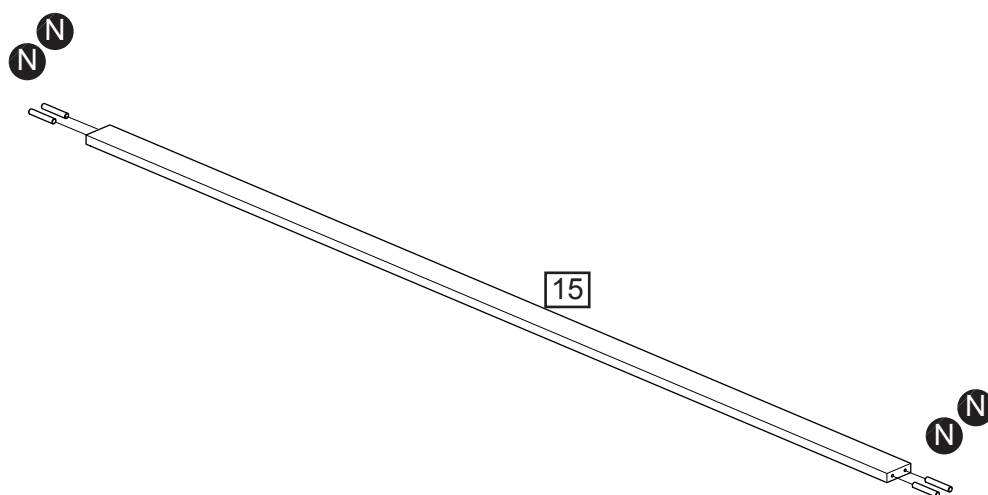
Insert 4x large locking nut **A** into the holes of mid rail **16**.

**a:**



**b:** Insert 4x wood dowel **N** with a smal amount of glue **H** into the holes of mid plinth **15**.

**b:**



# Assembly Instructions

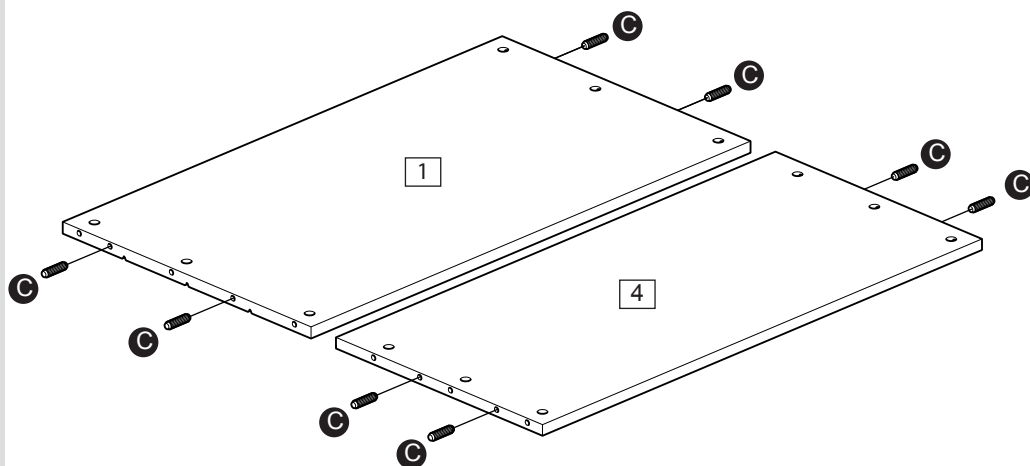
## Step 4

### Head end assembly

**a:** Insert 8x wood dowel **C** with a small amount of glue **H** into the holes of head board **1** and head panel **4**.

**Note:** We recommend to build this part on the packing cartons to prevent damage to your product.

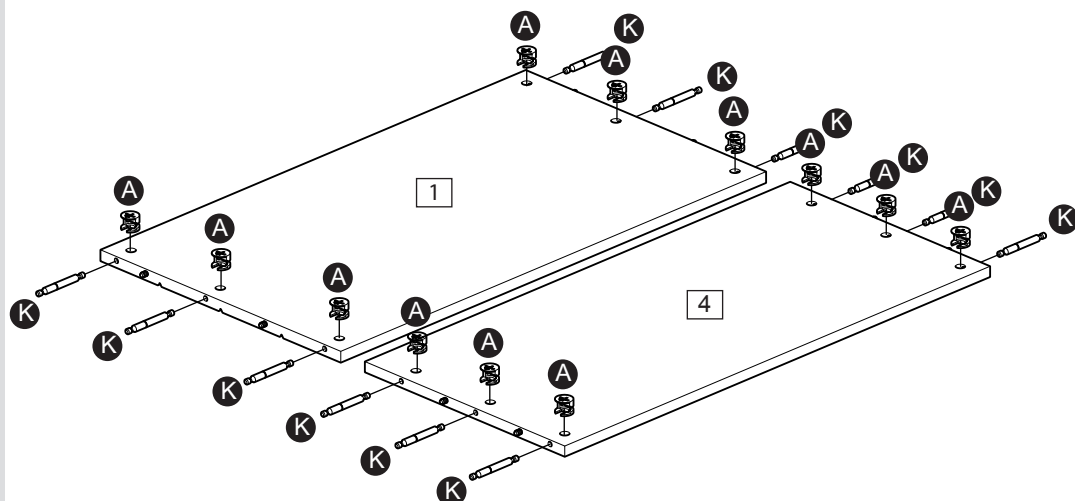
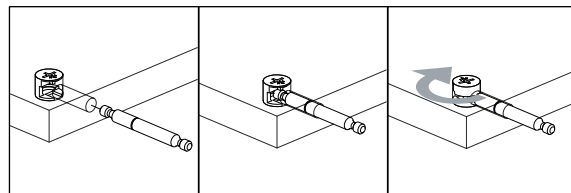
**a:**



**b:** Insert 12x large locking nut **A** and 12x double locking into screw **K** head board **1** and head panel **4**.

Use a screwdriver to turn 12x large locking nut **K** clockwise to lock.

**b:**



Continued on next page.

# Assembly Instructions

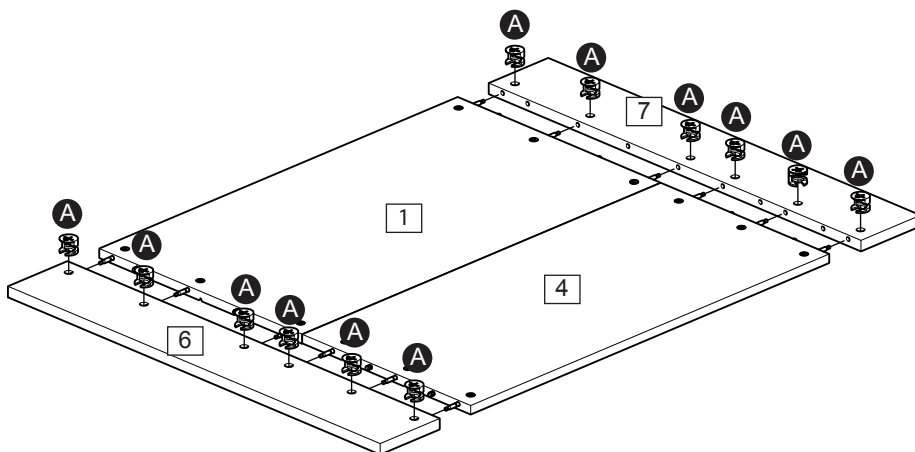
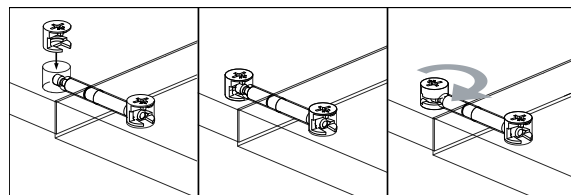
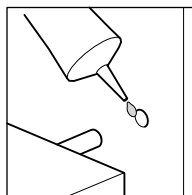
## Step 4 - continued

### Head end assembly

**C:** Apply a small amount of glue **H** onto wood dowel **C** already fixed into head board **1** and head panel **4**.

Attach leg head right side **6** and leg head left side **7** to head panel **4** and head board **1** with 12x large locking nut **A**. Use a screwdriver to turn 12x large locking nut **A** clockwise to lock.

**C:**



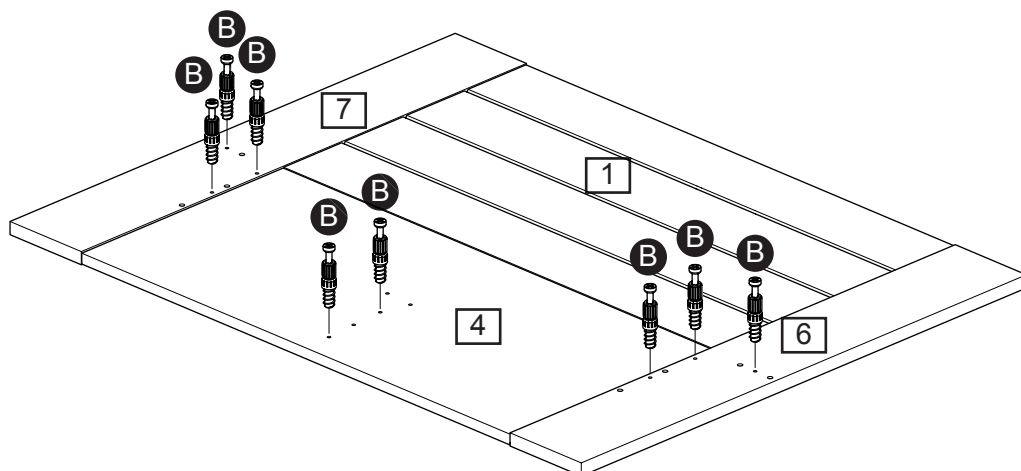
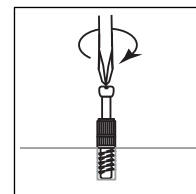
### Head end assembly

Turn the head end on the other side.

2 people required!

**d:** Screw 8 locking screws **B** into the holes on leg head right side **6**, head panel **4** and leg head left side **7**.

**d:**



# Assembly Instructions

## Step 5

### Final assembly

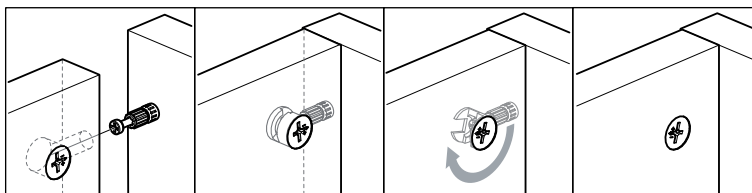
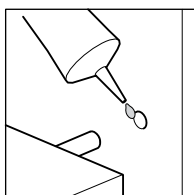
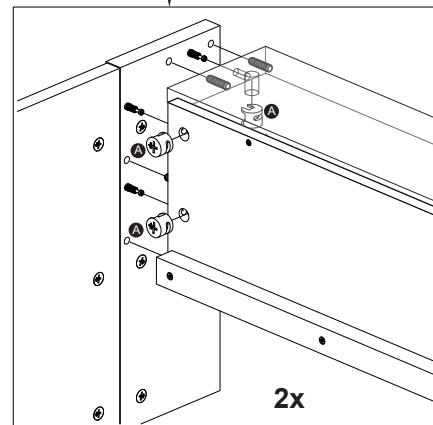
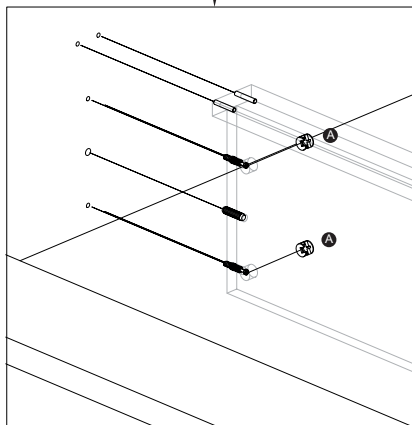
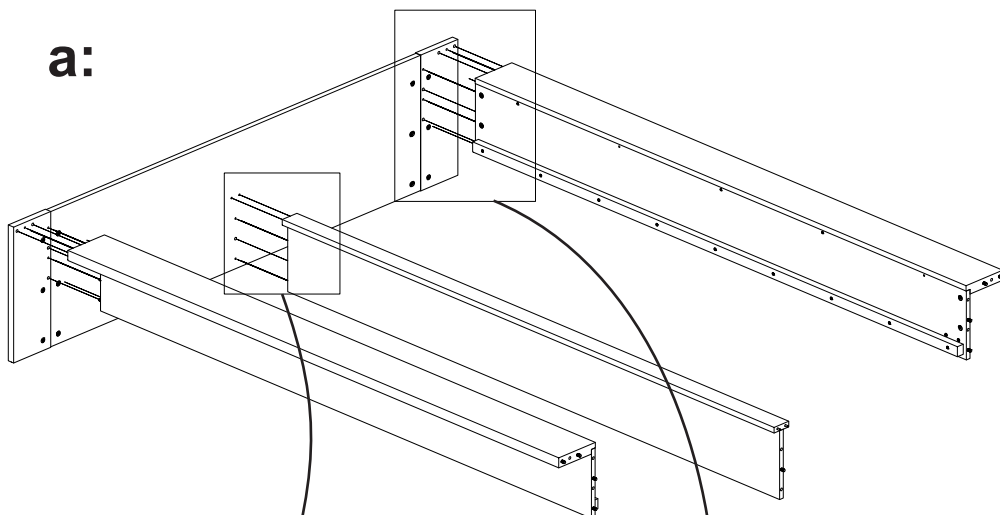
2 people required!

**a:** Glue dowels.

Attach the left and right rail and mid pannels to the foot board with 8x locking nuts **A**.

Use a screwdriver to turn 8x locking nut **A** clockwise to lock.

**a:**



Continued on next page.

# Assembly Instructions

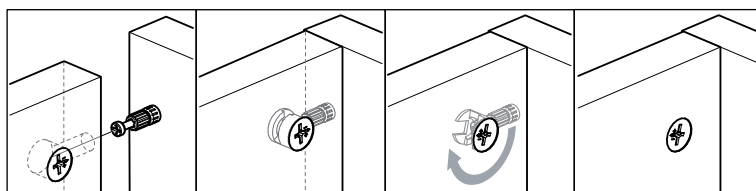
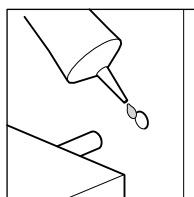
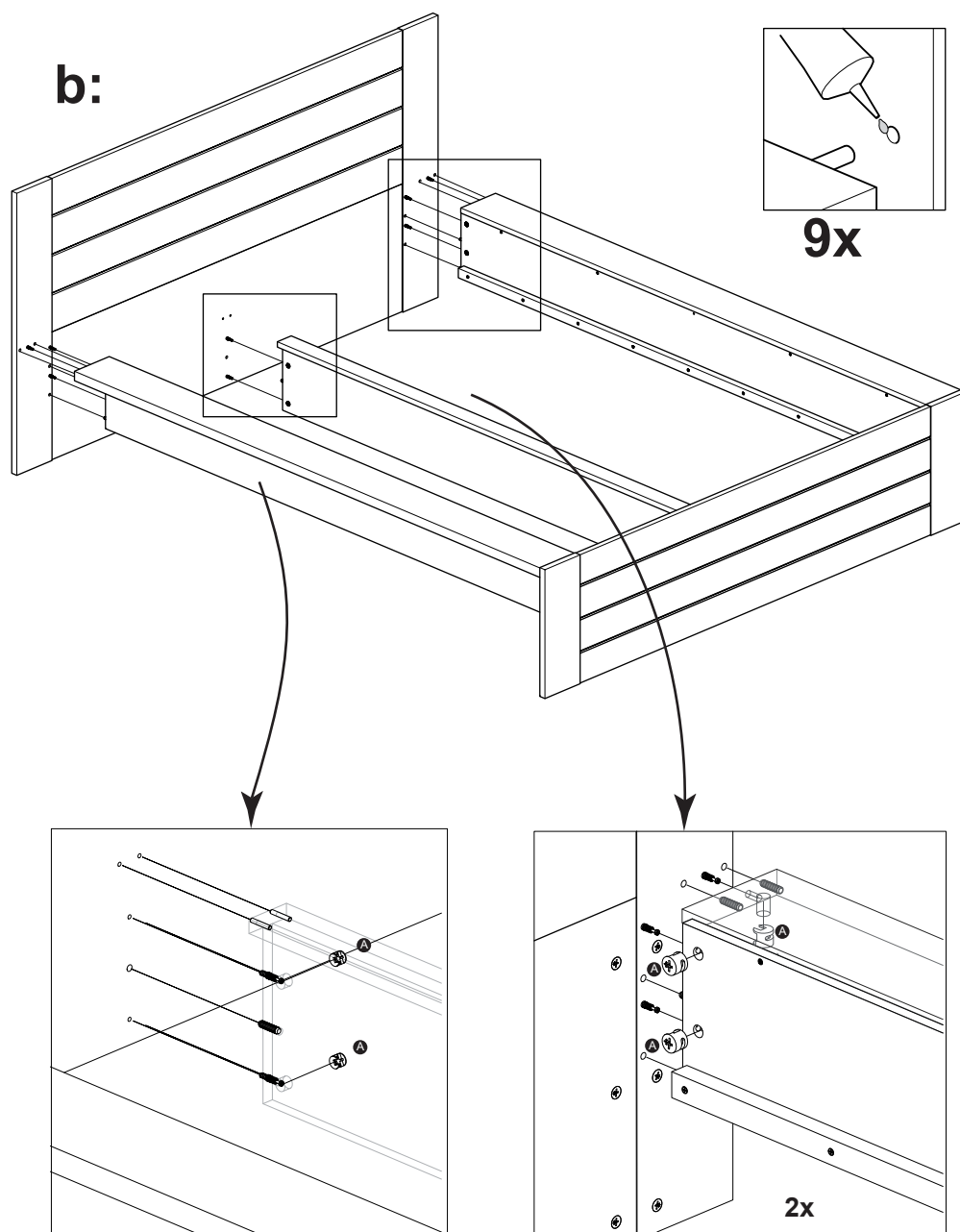
## Step 5 - continued

### Final assembly

2 people required!

**b:** Glue dowels attach the left and right side and mid panels to the foot board with 8x locking nut **A**.

Use a screwdriver to turn 8x large locking nut **A** clockwise to lock.



Continued on next page.



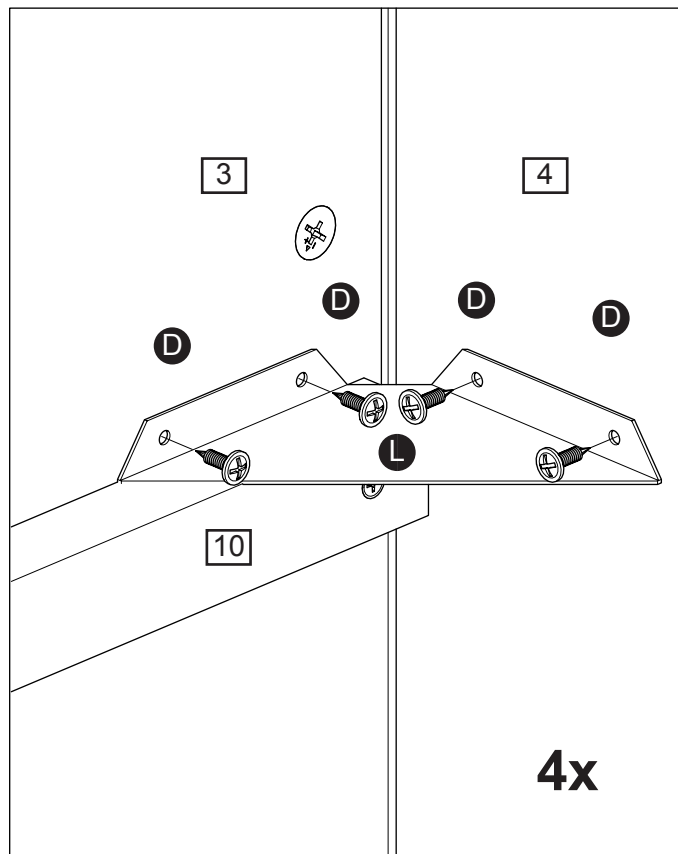
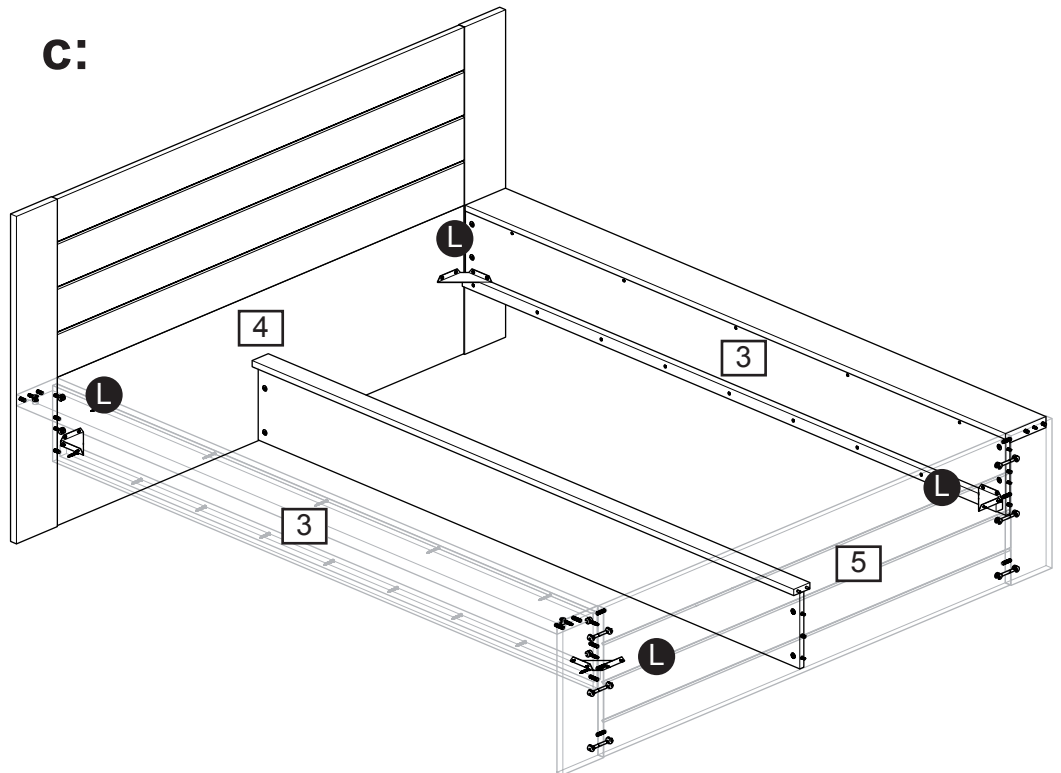
# Assembly Instructions

## Step 5 - continued

### Final assembly

**C:** Attach 4x connector bracket **L** with each 4x Back panel screw **D** on the corner of left & right rail **3**, head panel **4** and foot board **5**.

**C:**



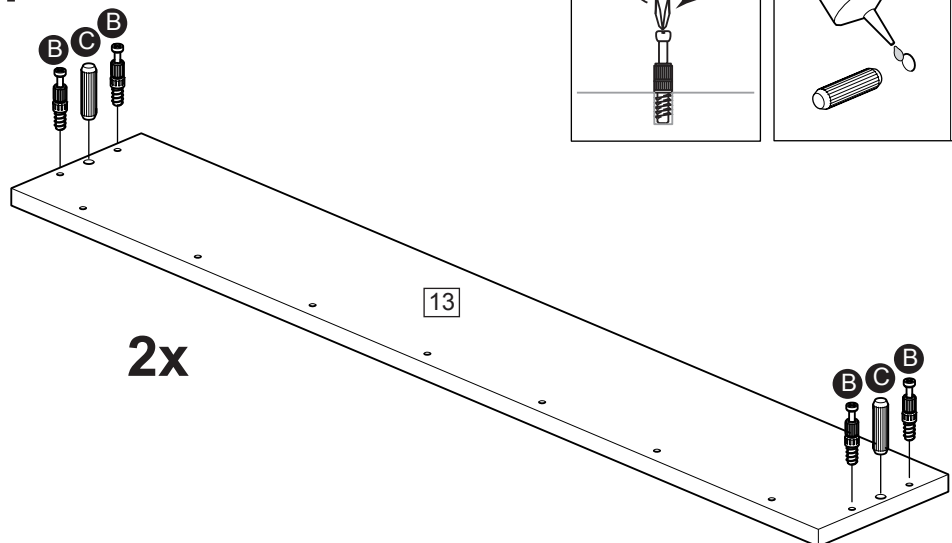
# Assembly Instructions

## Step 6

### Drawer assembly

**a:** Insert 2x wood dowel **C** with a small amount of glue **H** and screw 4 locking screw **B** into drawer back **13**.

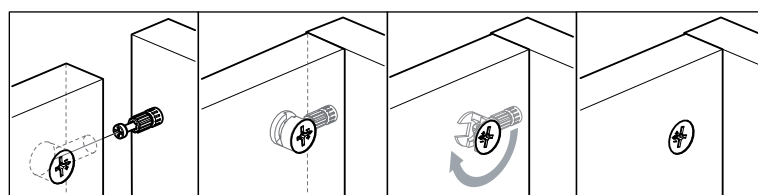
**a:**



2x

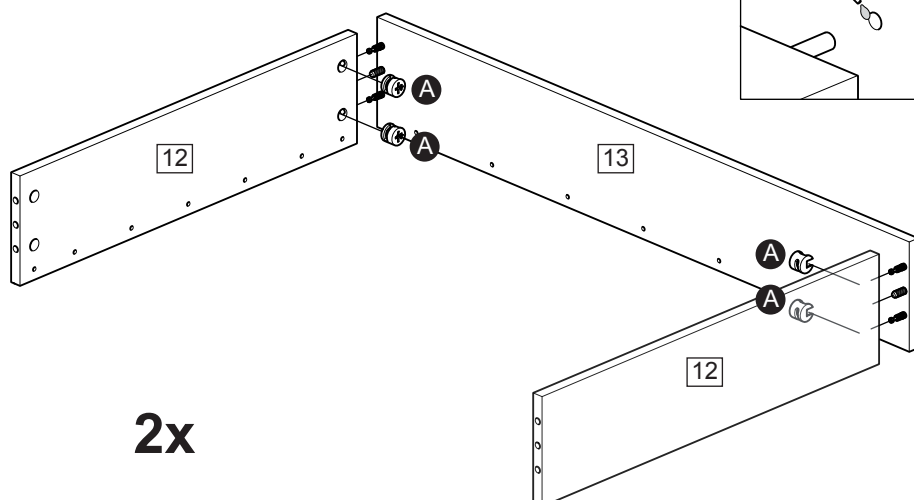
**b:** Apply a small amount of glue **H** onto 2x wood dowel **C** already fixed onto drawer back **13**.

**b:**



Attach left & right drawer side **12** onto drawer back **13**, insert 4x large locking nut **A** into left & right drawer side **12**.

Use a screwdriver to turn 4x large locking nut **A** clockwise to lock.



2x

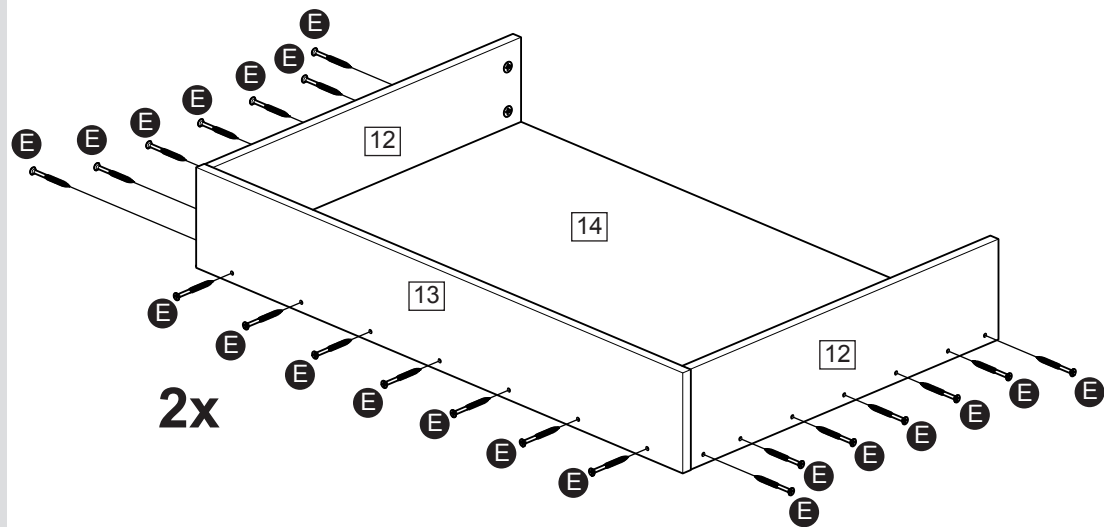
Continued on next page.

# Assembly Instructions

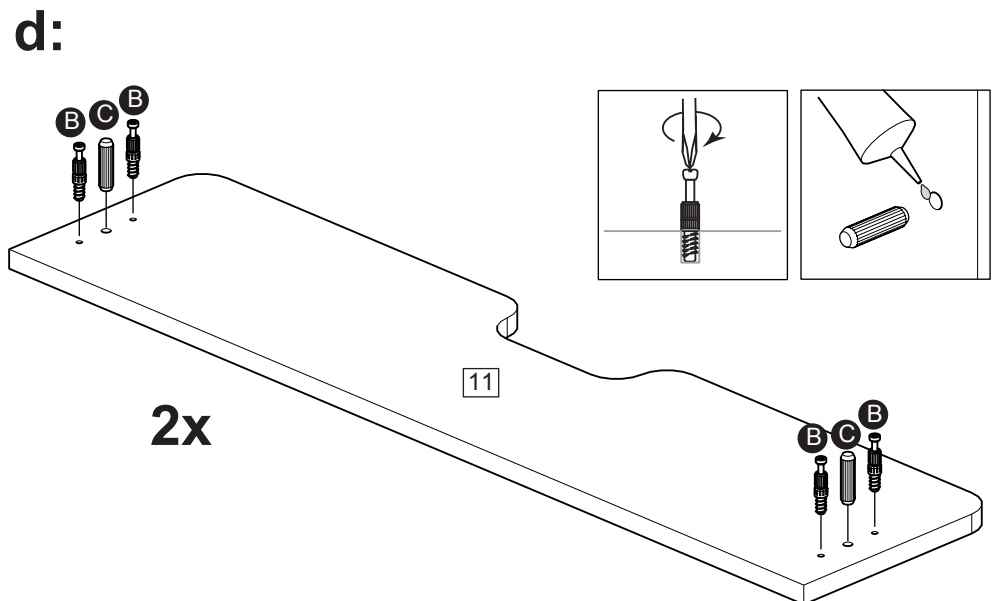
## Step 6 - continued

### Drawer assembly

**c:** Attach Drawer base **14** with 21x carcass screw **E** to left & right drawerside **12** & drawer back **13**.



**d:** Insert 2x wood dowel **C** with a small amount of glue **H** and screw 4x locking screw **B** into drawer front **11**.



Continued on next page.

# Assembly Instructions

## Step 6 - continued

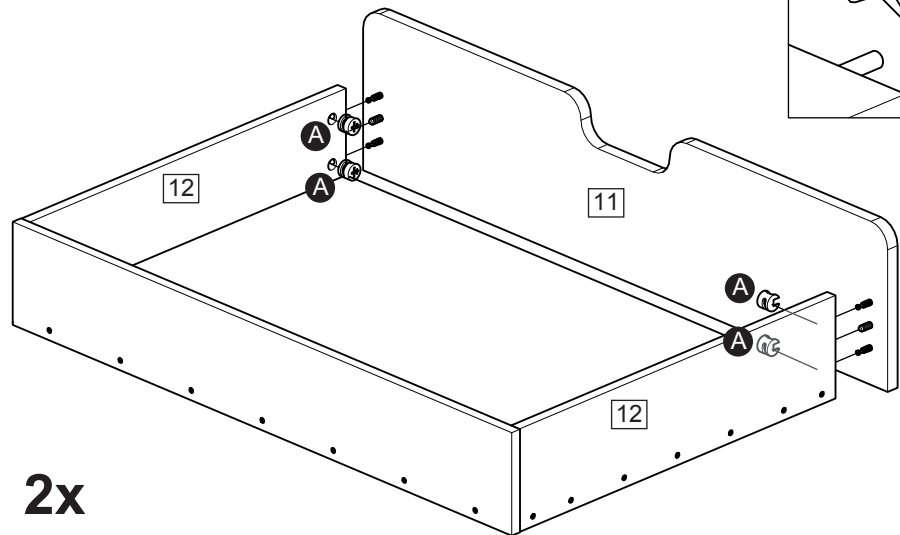
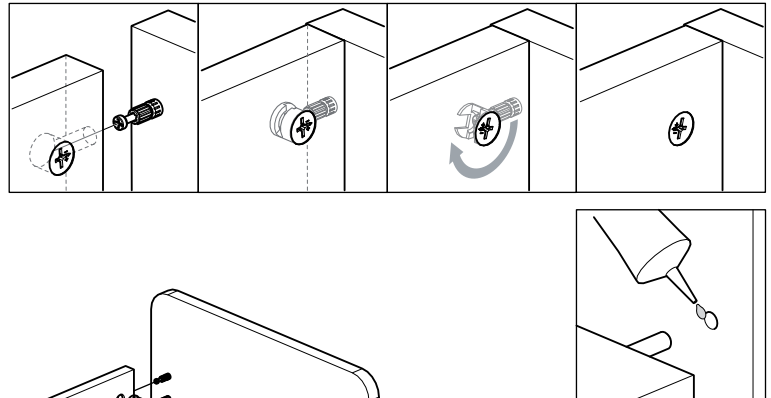
### Drawer assembly

**e:** Apply a small amount of glue **H** onto 2x wood dowel **C** already fixed onto drawer front **11**.

Attach left & right drawer side **12** onto drawer front **11**, insert 4x large locking nut **A** into left & right drawer side **12**.

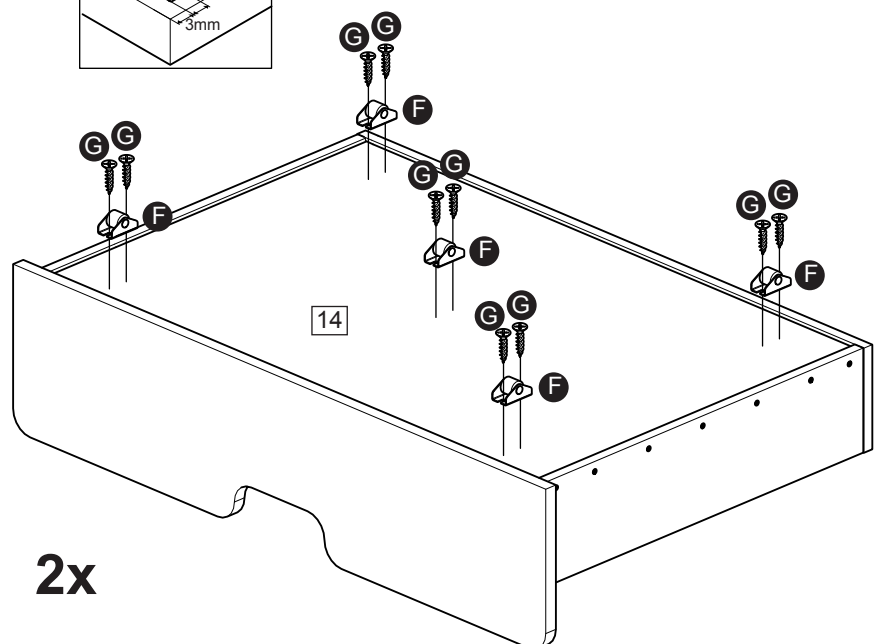
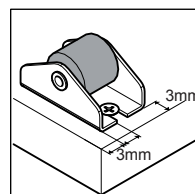
Use a screwdriver to turn 4x large locking nut **A** clockwise to lock.

**e:**



**f:** Attach 5x wheel **F** with each 2x chipboardscrew **G** on drawer base **14**.

**f:**



# Assembly Instructions

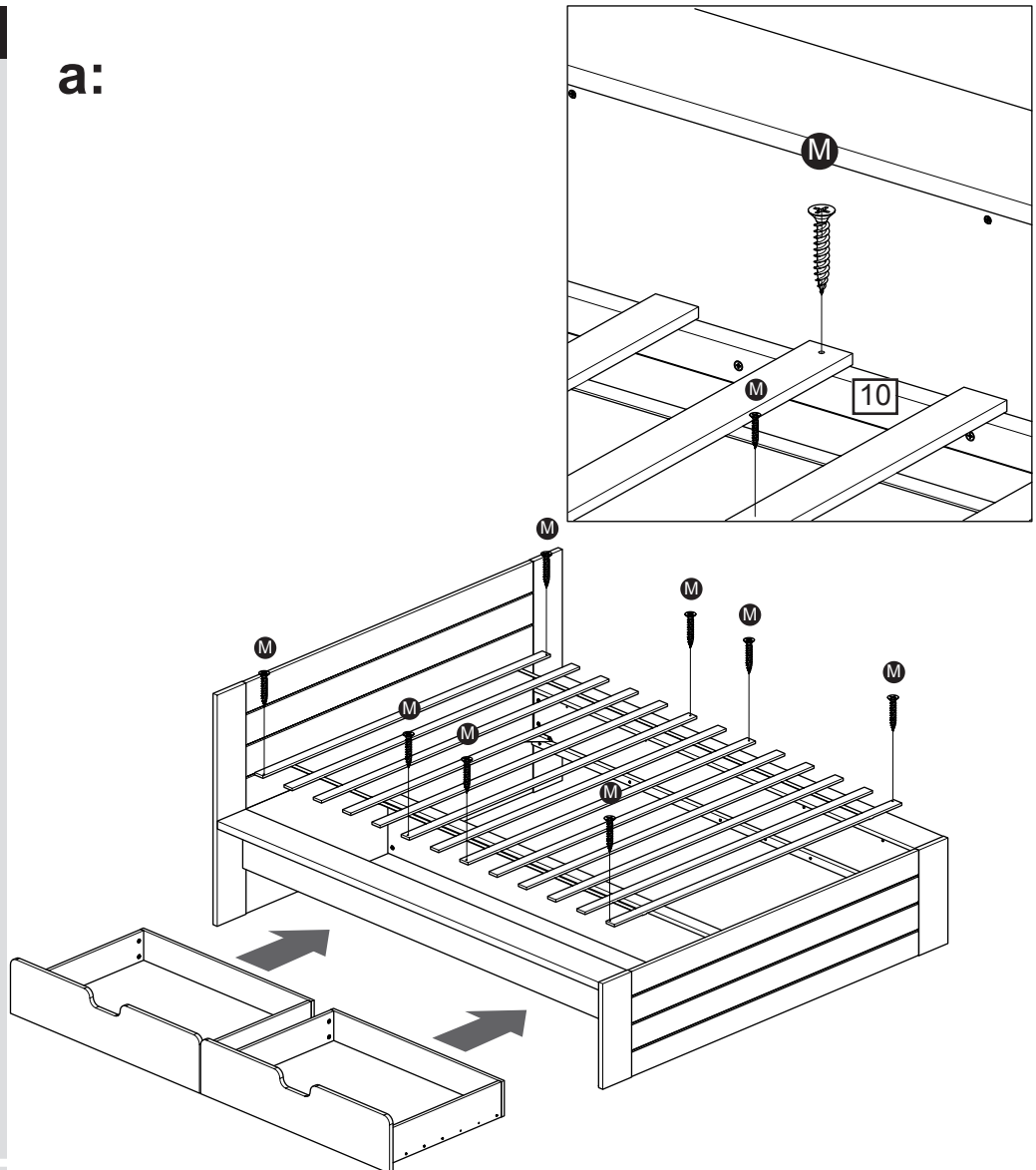
## Step 7

### Slats and drawers

**a:** Attach adult 4 ft 6 slats to support beam **10** with 8x chipboard screws **M**.

roll the 2 drawers under the bed.

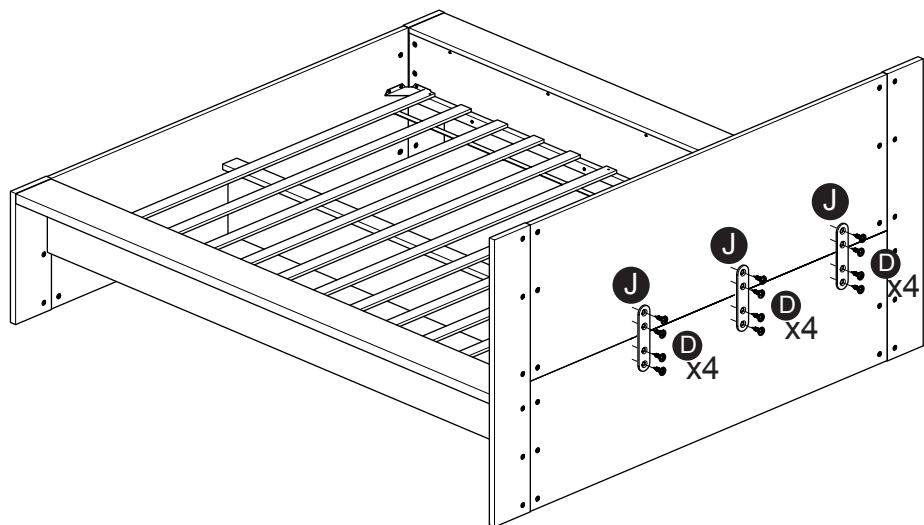
**a:**



**b:** Attach 3X small connecting plate **J** on back of head end with each 4x back panel screws **D**.

The assembly is now completed

**b:**



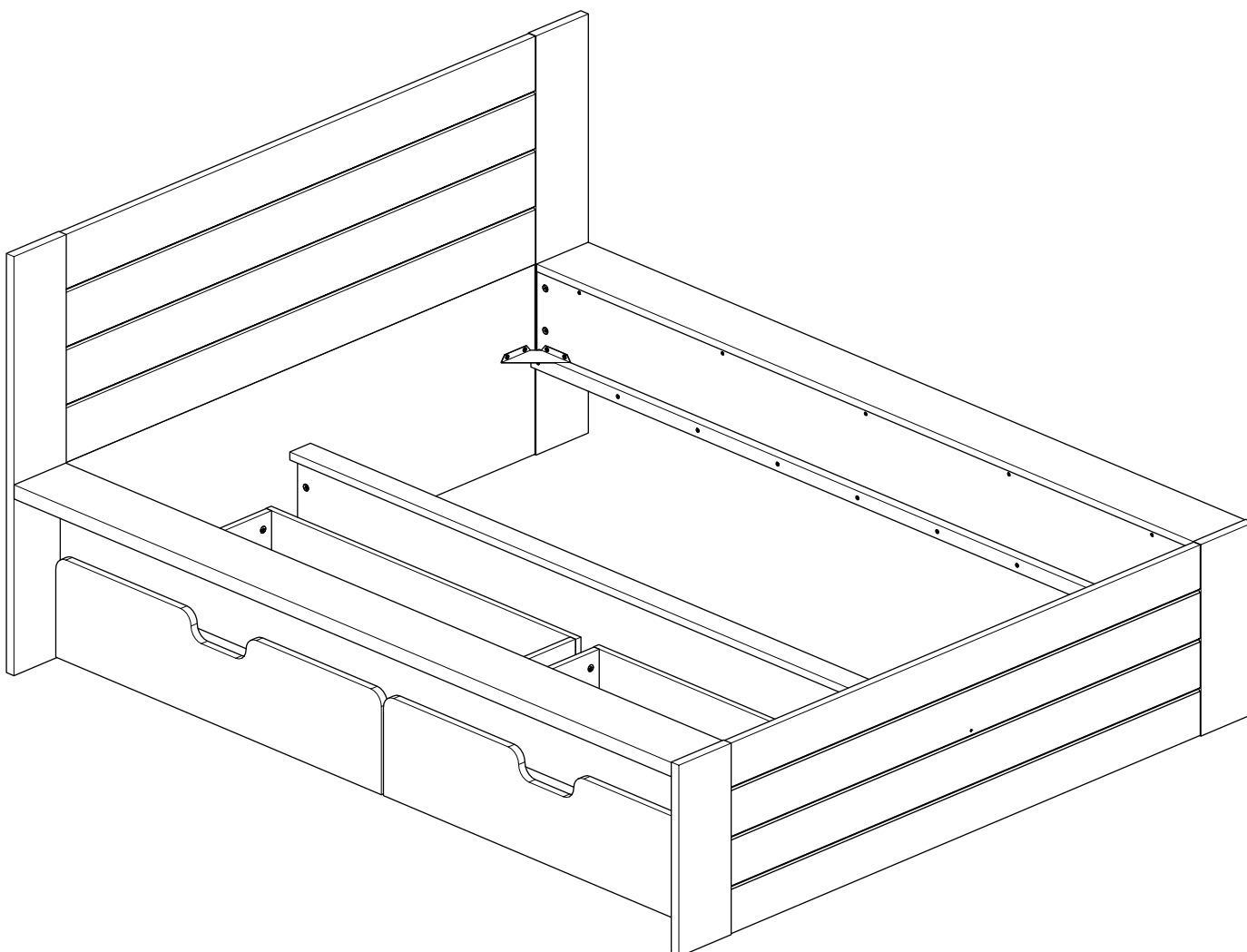
If you need help or have damaged or missing parts, call the **Customer Helpline:**  
**03456 400 800**

# Seattle 4Ft6

Assembly Instructions Please keep for future reference

2177450

2376000



## Dimensions

Width - 166,9cm

Depth - 195,4cm

Height - 95,0cm

**Tip : To prevent damage,  
we recommend that you  
build your unit on the  
carton(s) it was packed in.**

**Important – Please read these instructions fully before starting assembly**

If you need help or have damaged or missing parts, please visit: [www.argos-support.co.uk](http://www.argos-support.co.uk)  
or email: [Help@ClickSpares.co.uk](mailto:Help@ClickSpares.co.uk) (quoting your original order number)

Alternatively, call the Spares Helpline on: **0370 112 1928**

For any other queries please contact the Customer Helpline on: **0345 640 2020**



# Safety and Care Advice

**Important** – Please read these instructions fully before starting assembly

- Check you have all the components and tools listed on pages 2 and 3.
- Remove all fittings from the plastic bags and separate them into their groups.
- Keep children and animals away from the work area, small parts could choke if swallowed.
- Make sure you have enough space to layout the parts before starting.

- Do not stand or put weight on the product, this could cause damage.
- Assemble the item as close to its final position (in the same room) as possible.
- Assemble on a soft level surface to avoid damaging the unit or your floor.
- Parts of the assembly will be easier with 2 people.



• To reduce the likelihood of damaging your product please ensure that your power drill is set on a low torque setting.

- Dispose of all packaging carefully and responsibly.

## Glue safety - Take care when using glue, please follow the advice below

**Skin contact:** Remove contamination by washing with soap and water. This procedure should also be followed prior to eating and drinking.

**Eye contact:** Rinse immediately with clean water for 15 minutes and seek medical advice.

**If swallowed:** Seek medical advice immediately.

## Care and maintenance

- Only clean using a damp cloth and mild detergent, do not use bleach or abrasive cleaners.

- From time to time check that there are no loose screws on this unit.

- This product should not be discarded with household waste. Take to your local authority waste disposal centre.

## Handy Hints

- Assemble all parts and bolts loosely during assembly, only once the product is complete should you fully tighten the bolts

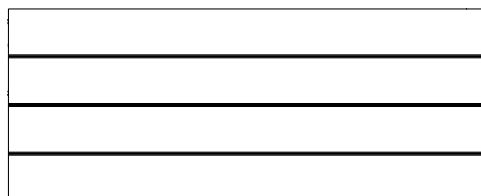
- Regularly check and ensure that all bolts and fittings are tightened properly.

**Note:** if required the next page can be cut out and used as reference throughout the assembly. Keep this page with these instructions for future reference.

# Components - Panels

If you have damaged or missing parts, call the  
**Customer Helpline: 03456 400 800**

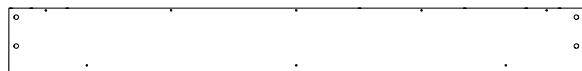
Please check you have all the panels listed below



**1** Head board  
(136,5x 51,7cm)  
FA2533



**2** Left & Right plinth x 2  
(191,0x15,0cm)  
FA2530



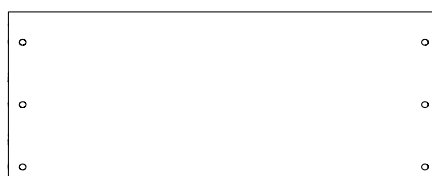
**3** Left & right rail X2  
(191,0x 22,0cm)  
P2040



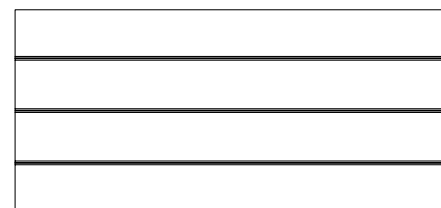
**6** leg head end right  
(95,0x 15,2cm)  
P6007



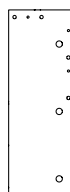
**7** leg head left side  
(95,0x 15,2cm)  
P6006



**4** Head pannel  
(136,5x 43,0cm)  
P2038



**5** Foot board  
(136,5x 43,2cm)  
FA2536



**8** leg foot right side  
(43,4 x 15,2cm)  
P6009



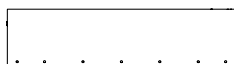
**9** leg foot left side  
(43,4 x 15,2cm)  
P6008



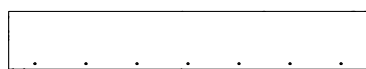
**10** Support rail X2  
(189,7x 3,2cm)  
MA2251



**11** Drawerfront x 2  
(94,6x 23,0 cm)  
P4105



**12** Drawer left & right side x 4  
(57,0x 14,5cm)  
P4107



**13** Drawer Back x 2  
(90,0x 14,5cm)  
P4109



**14** Drawer Base x 2  
(86,8x 57,0cm)  
P4110



**15** mid plinth  
(191,4x 6,0 cm)  
P7047



**16** mid rail  
(191,4x 22cm)  
P2042





# Components - Fittings

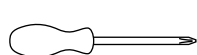
Please check you have all the fittings listed below

Note: The quantities below are the correct amount to complete the assembly. In some cases more fittings may be supplied than are required.

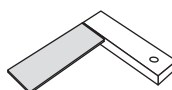
1/1

<p><b>A</b> Large locking nut x 68 (15x12mm)</p> <p>FK1012</p>	<p><b>B</b> Locking screw x 32 (5x24mm)</p> <p>FK1011</p>	<p><b>C</b> Wood dowel x 40 (8x30mm)</p> <p>FK1411</p>
<p><b>D</b> Backpanelscrew x 28 (4x15mm)</p> <p>FK1400</p>	<p><b>E</b> Carcase screw x 52 (4x40mm)</p> <p>FK1006</p>	<p><b>F</b> Wheel x 10</p> <p>FK1244</p>
<p><b>G</b> Chipboardscrew x 20 (3x15mm)</p> <p>FK1311</p>	<p><b>H</b> Glue x 1</p> <p>FA1510</p>	<p><b>I</b> Chipboardscrew x 18 (5x35mm)</p> <p>FK1326</p>
<p><b>J</b> Connecting plate x 3</p> <p>FK1236</p>	<p><b>K</b> Double locking screw x 18 (24/24mm)</p> <p>FK1052</p>	<p><b>L</b> Corner bracket x4</p> <p>FA15040</p>
<p><b>M</b> Chipboardscrew x 8 (4x25mm)</p> <p>FK1314</p>	<p><b>N</b> Wood dowel x 4 (5x30mm)</p> <p>FK1410</p>	

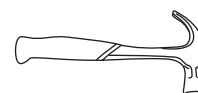
## Tools required



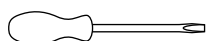
Phillips screwdriver  
(medium & large)



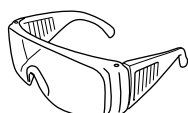
Setsquare



Small  
hammer



Flatblade screwdriver  
(medium)



Eye protection  
(when using a  
hammer or drill)

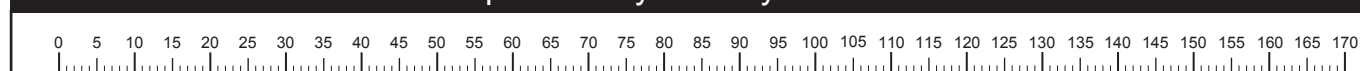


Ruler/tape  
measure



Scissors

## Ruler - Use this ruler to help correctly identify the screws



The screws length is measured from the head to the point (30mm screw shown).

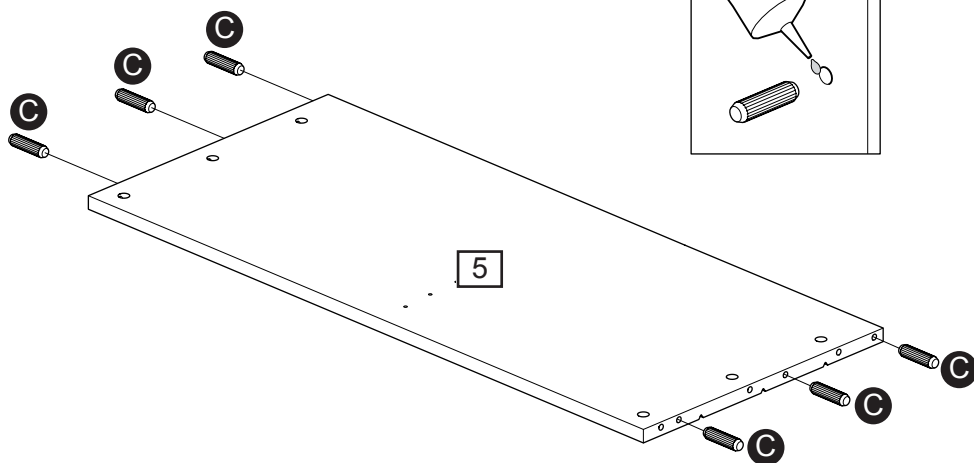
# Assembly Instructions

## Step 1

### Foot end assembly

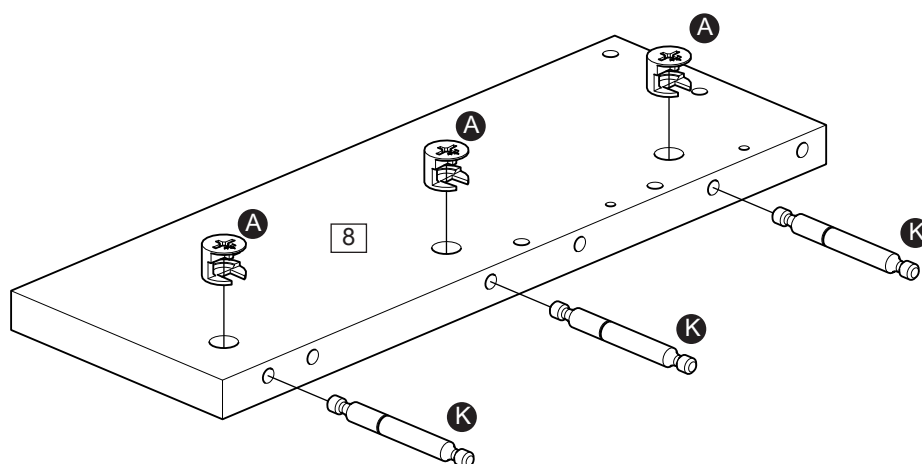
**a:** Insert 6x wood dowel **C** with a small amount of glue **H** into the holes of foot board **5**.

**a:**



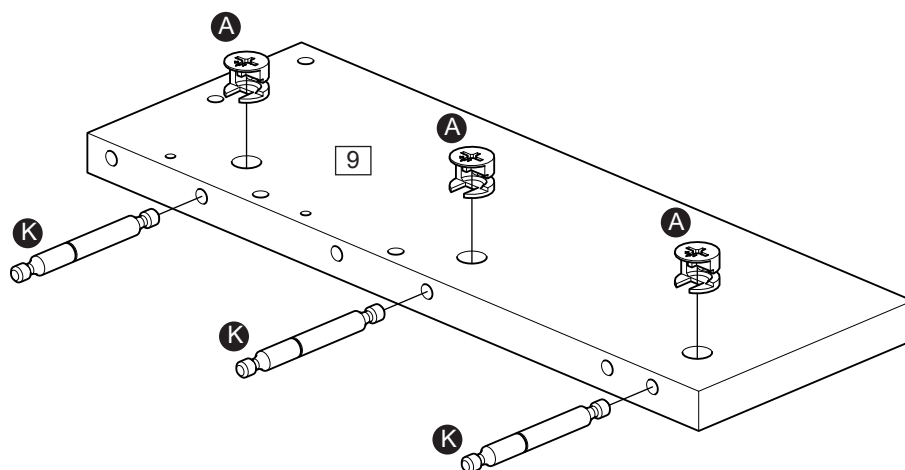
**b:** Insert 3x large locking nut **A** and 3x double locking into screw **K** into leg foot right side **8**. Use a screwdriver to turn 3x large locking nut **A** clockwise to lock.

**b:**



**c:** Insert 3x large locking nut **A** and 3x double locking into screw **K** into leg foot left side **9**. Use a screwdriver to turn 3x large locking nut **K** clockwise to lock.

**c:**



Continued on next page.

# Assembly Instructions

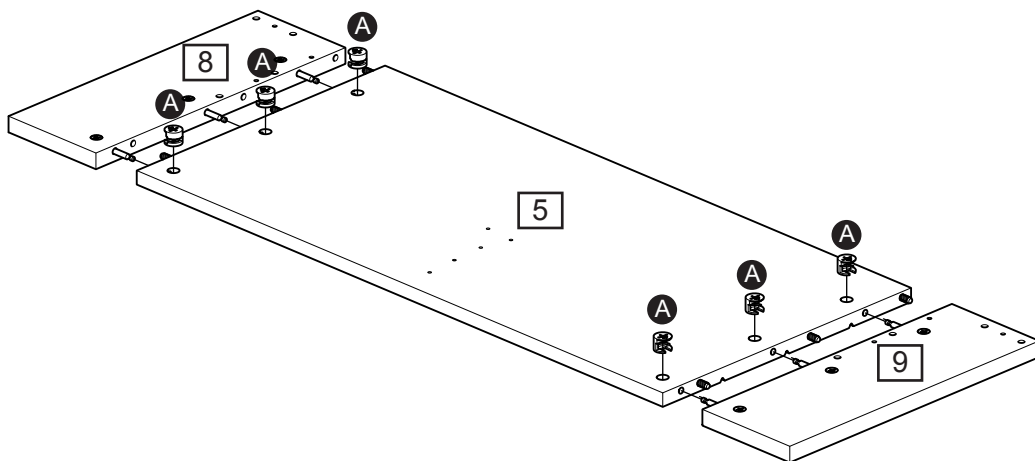
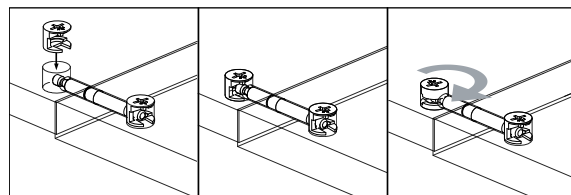
## Step 1 - continued

### Foot end assembly

**d:** Attach leg foot right side **8** and leg foot left side **9** on foot board **5** using 6x Large locking nut **A**.

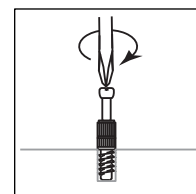
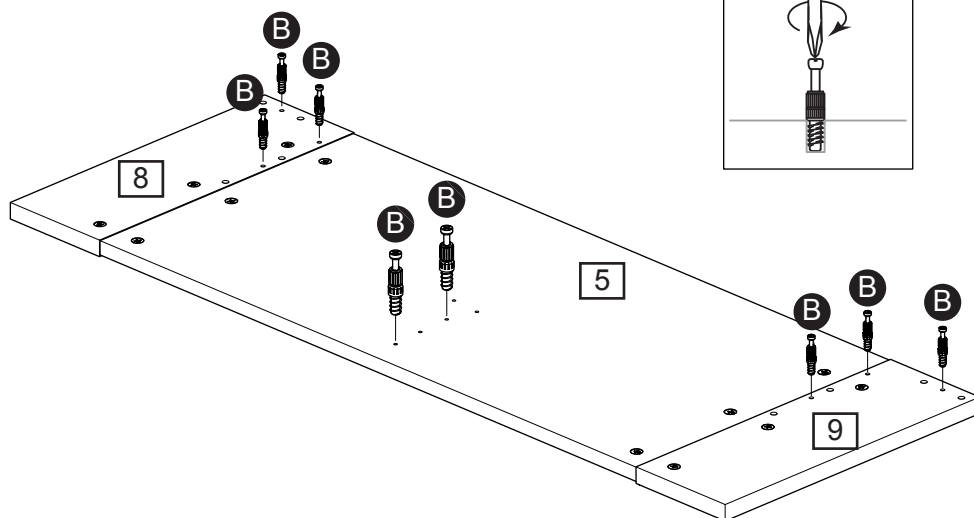
Use a screwdriver to turn 6x large locking nut **A** clockwise to lock.

**d:**



**e:** Screw 8x locking screw **B** into the holes on leg foot side right **8**, foot board **5** and leg foot side left **9**.

**e:**



## Step 2

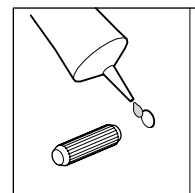
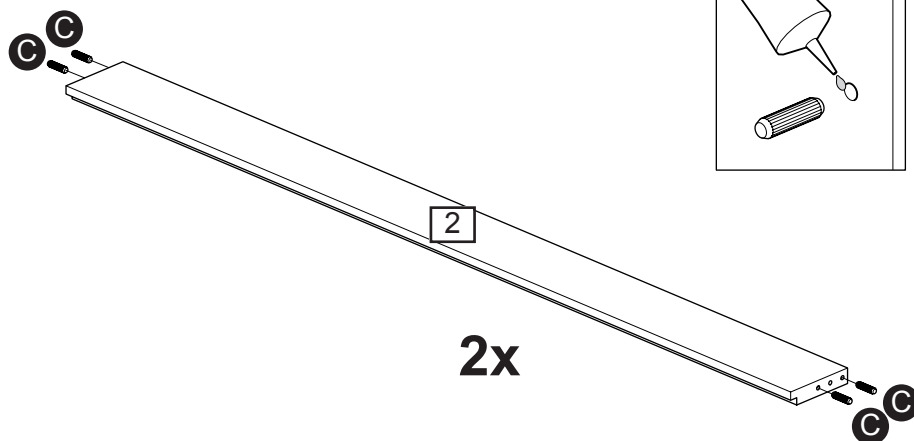
### Side assembly

next few steps must be done 2 times!  
(one assembly is left side other is right side.)

**a:** Insert 4x wood dowel **C** with a small amount of glue **H** into the holes of left & right plinth **2**.

Continued on next page.

**a:**



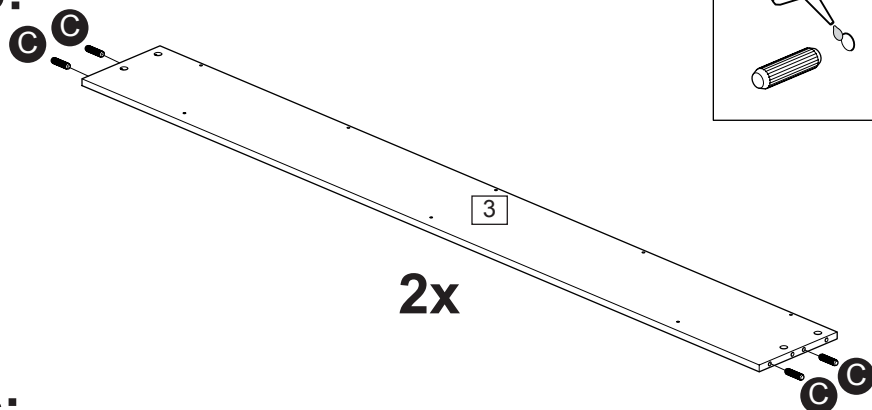
# Assembly Instructions

## Step 2 - continued

### Side assembly

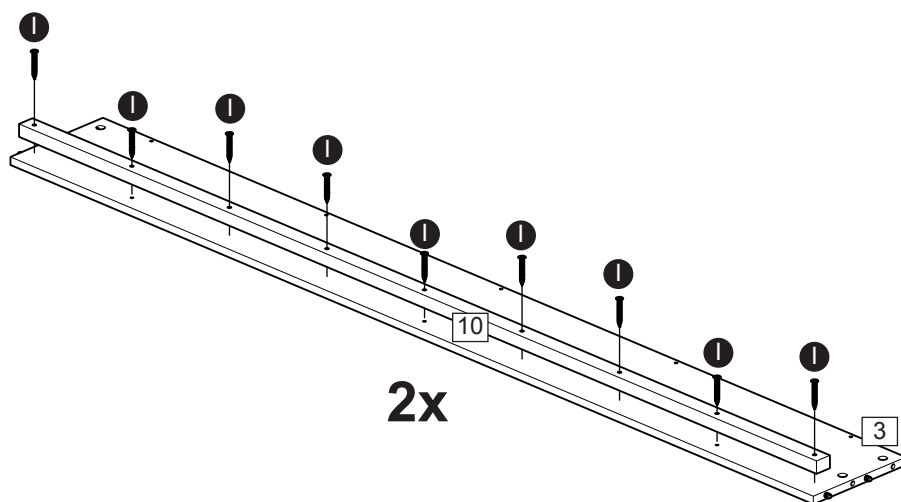
**b:** Insert 4x wood dowel **C** with a small amount of glue **H** into the holes of left & right rail **3**.

**b:**



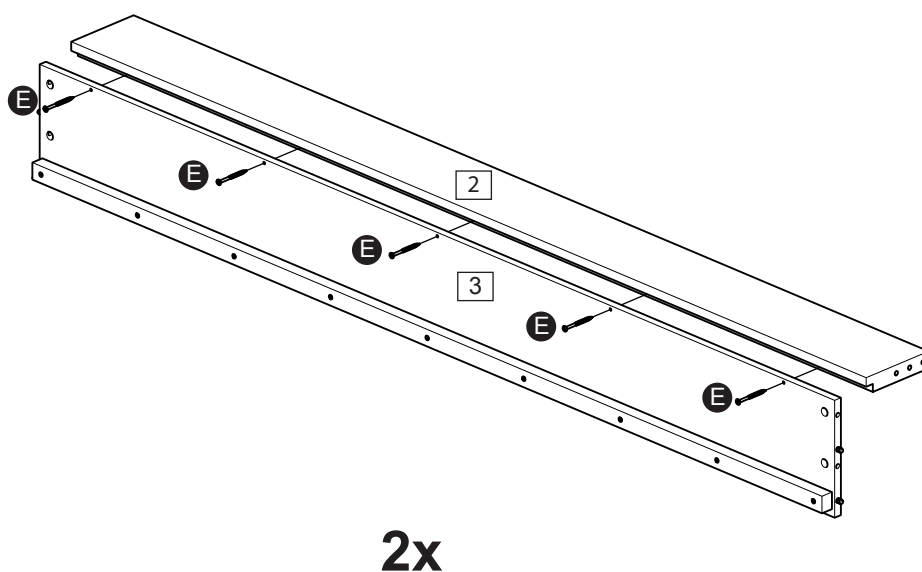
**c:** Attach support rail **10** with 9x chipboard screws **I** to left & right rail **3**.

**c:**



**d:** Attach left & right plinth **2** with 5x carcass screw **E** to left & right rail **3**.

**d:**



**Note:** This step requires 2 people.

# Assembly Instructions

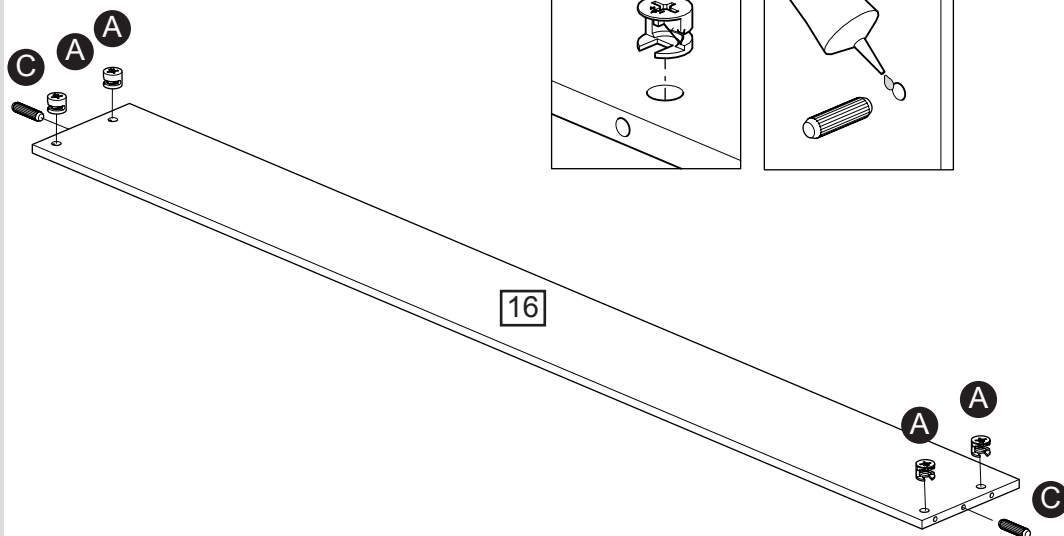
## Step 3

### Mid pannels assembly

**a:** Insert 2x wood dowel **C** with a smal amount of glue **H** into the holes of mid rail **16**.

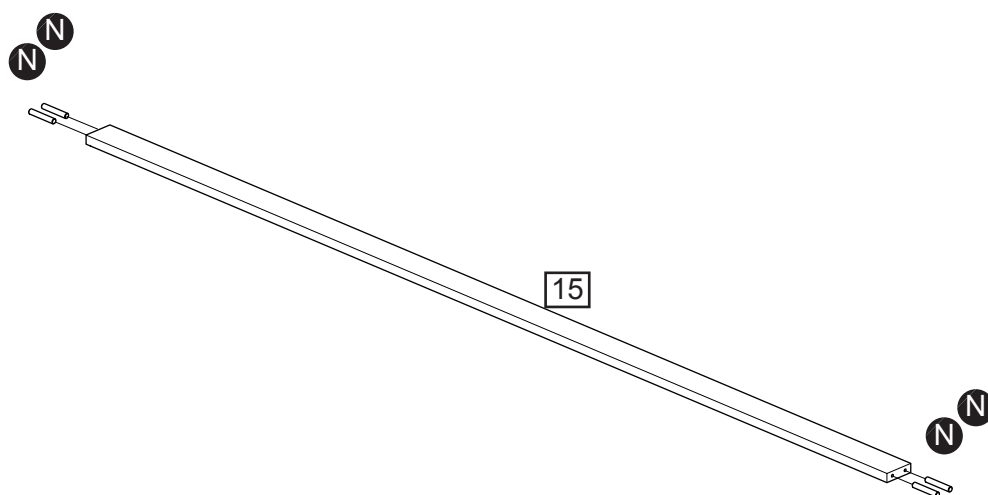
Insert 4x large locking nut **A** into the holes of mid rail **16**.

**a:**



**b:** Insert 4x wood dowel **N** with a smal amount of glue **H** into the holes of mid plinth **15**.

**b:**



# Assembly Instructions

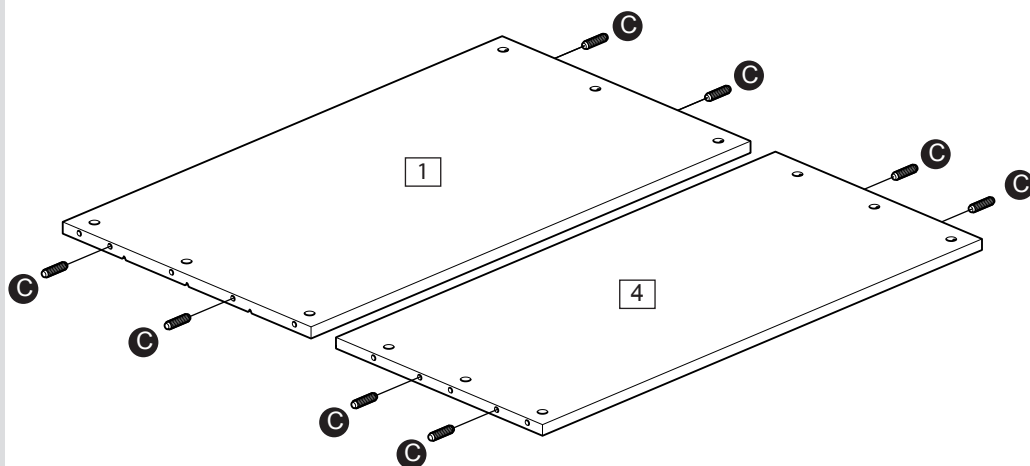
## Step 4

### Head end assembly

**a:** Insert 8x wood dowel **C** with a small amount of glue **H** into the holes of head board **1** and head panel **4**.

**Note:** We recommend to build this part on the packing cartons to prevent damage to your product.

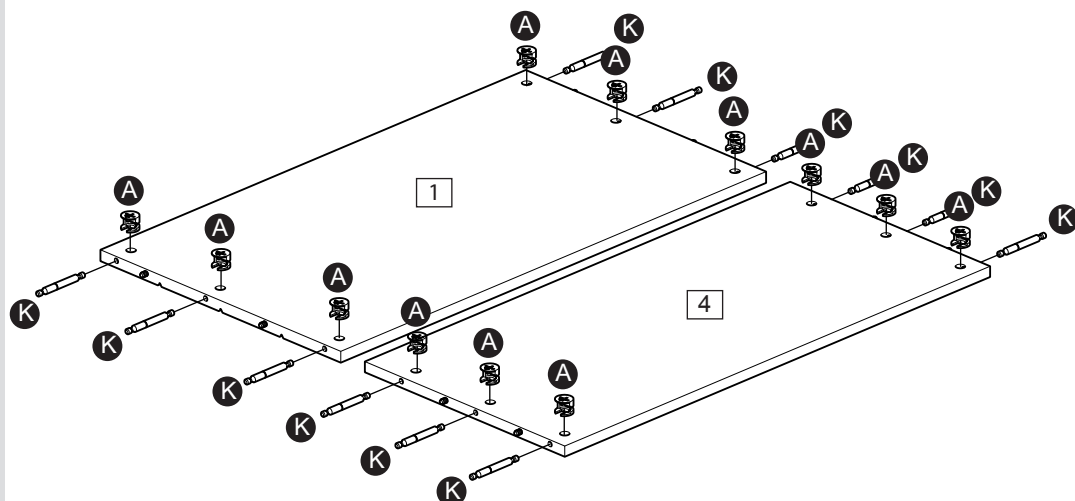
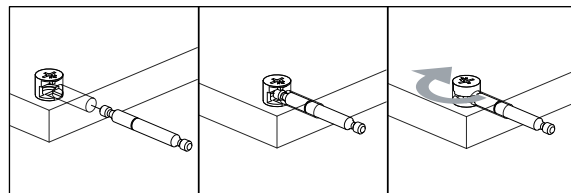
**a:**



**b:** Insert 12x large locking nut **A** and 12x double locking into screw **K** head board **1** and head panel **4**.

Use a screwdriver to turn 12x large locking nut **K** clockwise to lock.

**b:**



Continued on next page.

# Assembly Instructions

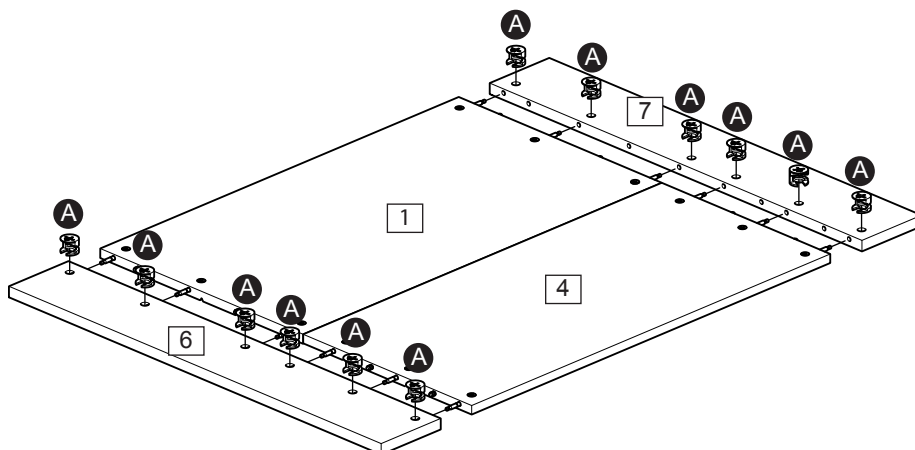
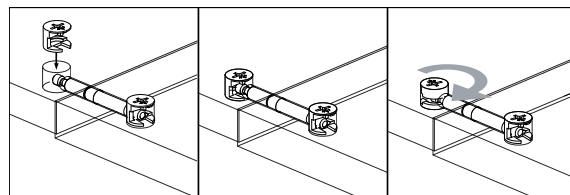
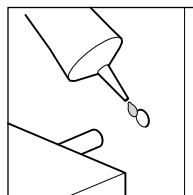
## Step 4 - continued

### Head end assembly

**C:** Apply a small amount of glue **H** onto wood dowel **C** already fixed into head board **1** and head panel **4**.

Attach leg head right side **6** and leg head left side **7** to head panel **4** and head board **1** with 12x large locking nut **A**. Use a screwdriver to turn 12x large locking nut **A** clockwise to lock.

**C:**



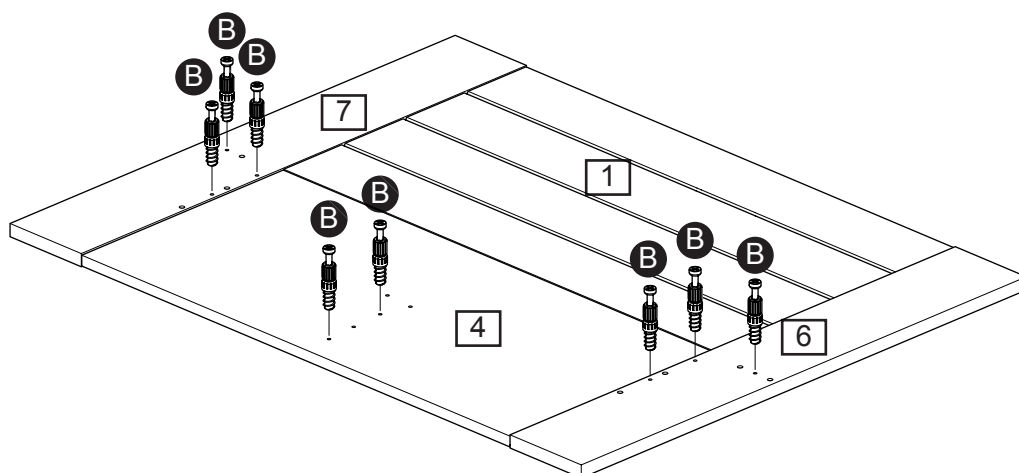
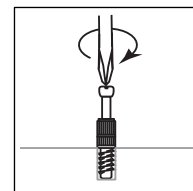
### Head end assembly

Turn the head end on the other side.

2 people required!

**d:** Screw 8 locking screws **B** into the holes on leg head right side **6**, head panel **4** and leg head left side **7**.

**d:**



# Assembly Instructions

## Step 5

### Final assembly

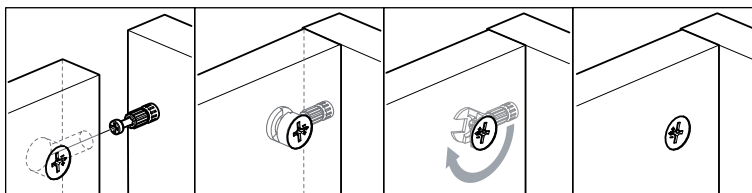
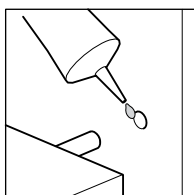
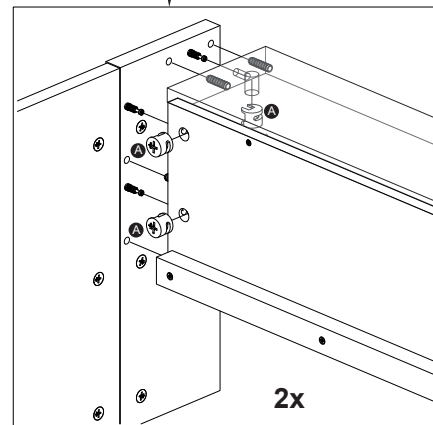
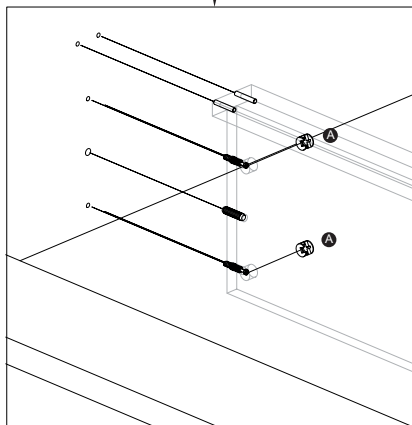
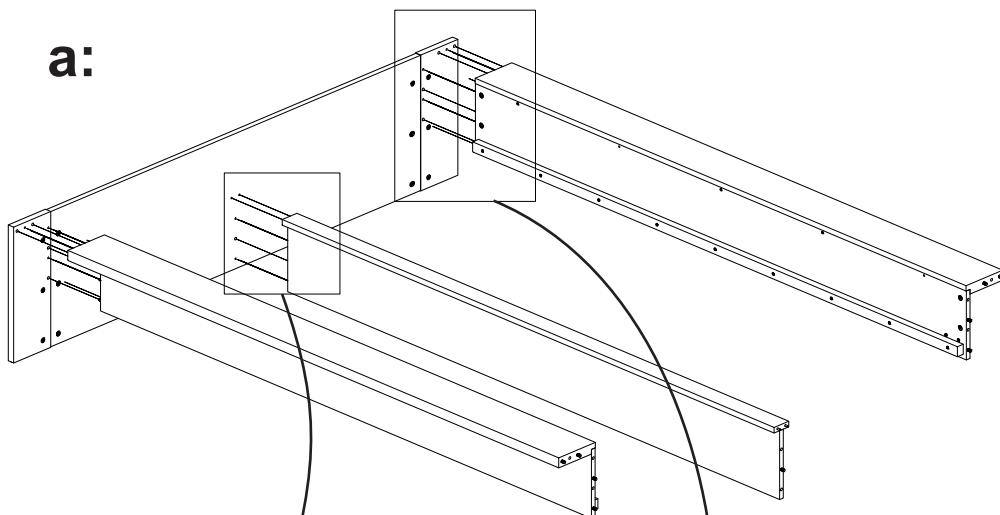
2 people required!

**a:** Glue dowels.

Attach the left and right rail and mid pannels to the foot board with 8x locking nuts **A**.

Use a screwdriver to turn 8x locking nut **A** clockwise to lock.

**a:**



Continued on next page.



# Assembly Instructions

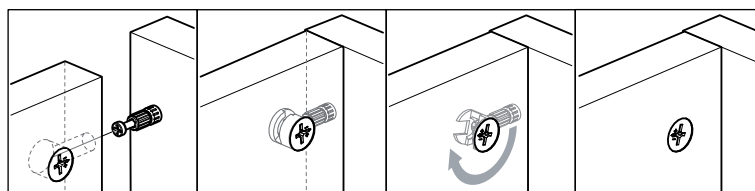
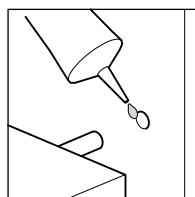
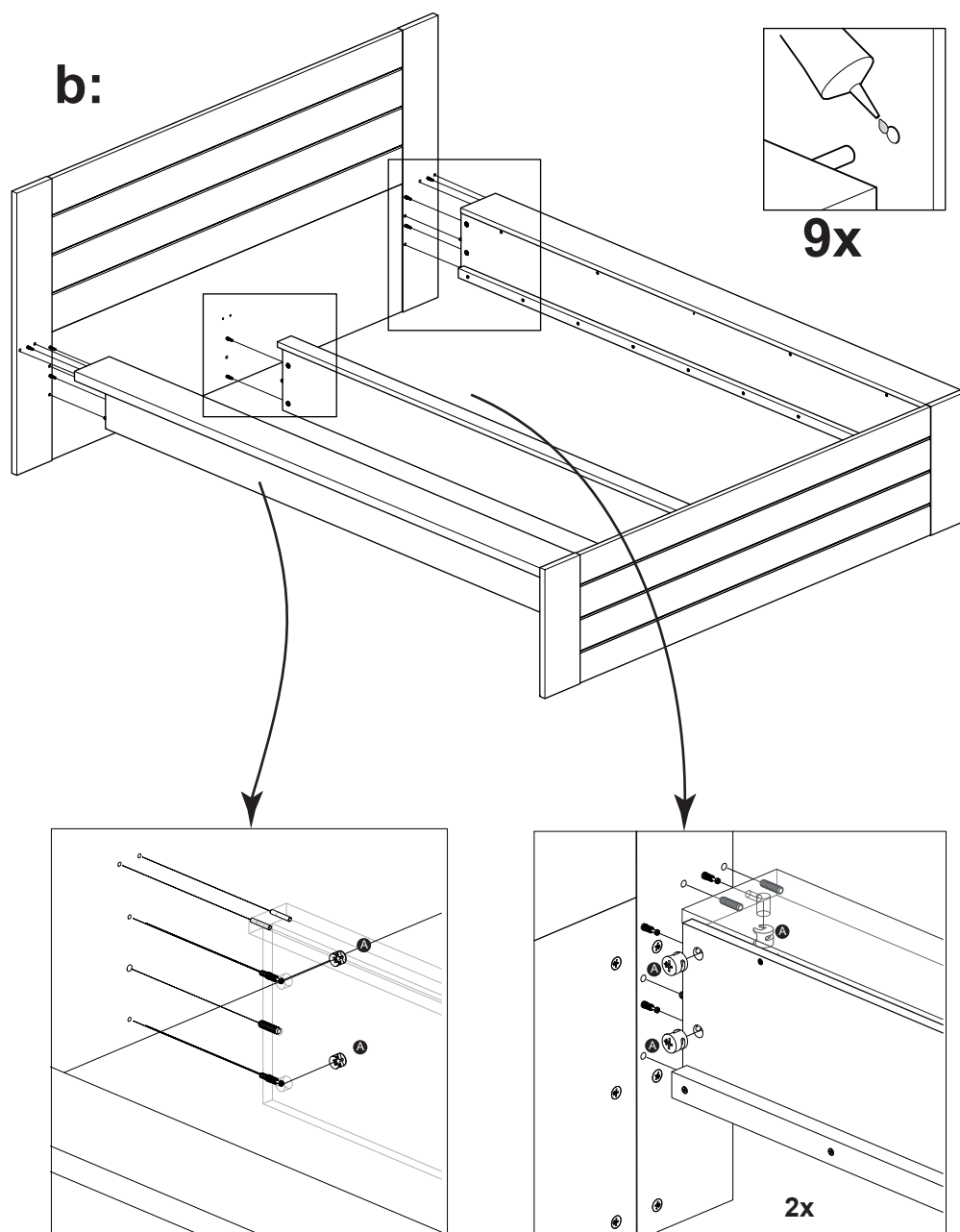
## Step 5 - continued

### Final assembly

2 people required!

**b:** Glue dowels attach the left and right side and mid panels to the foot board with 8x locking nut **A**.

Use a screwdriver to turn 8x large locking nut **A** clockwise to lock.



Continued on next page.

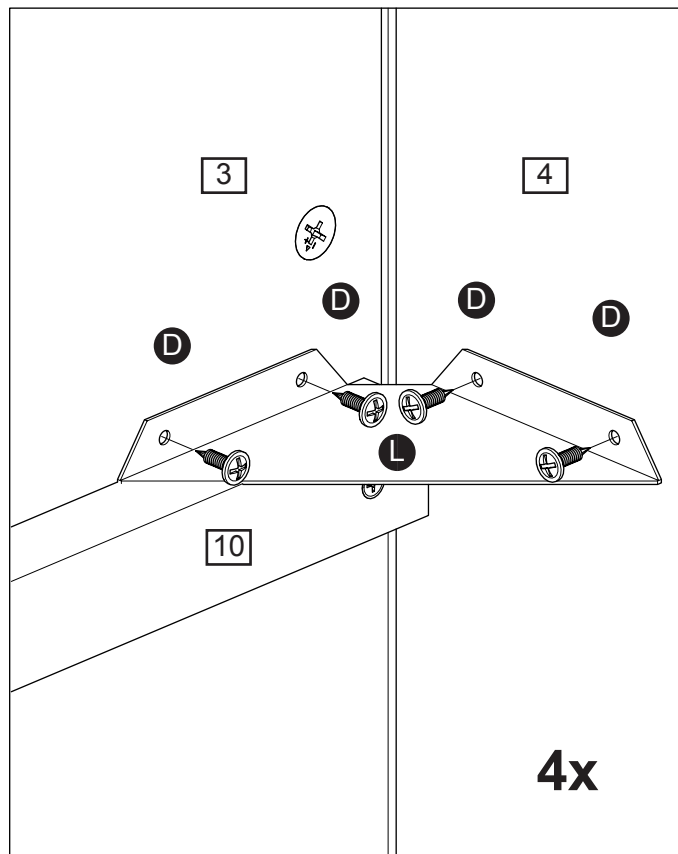
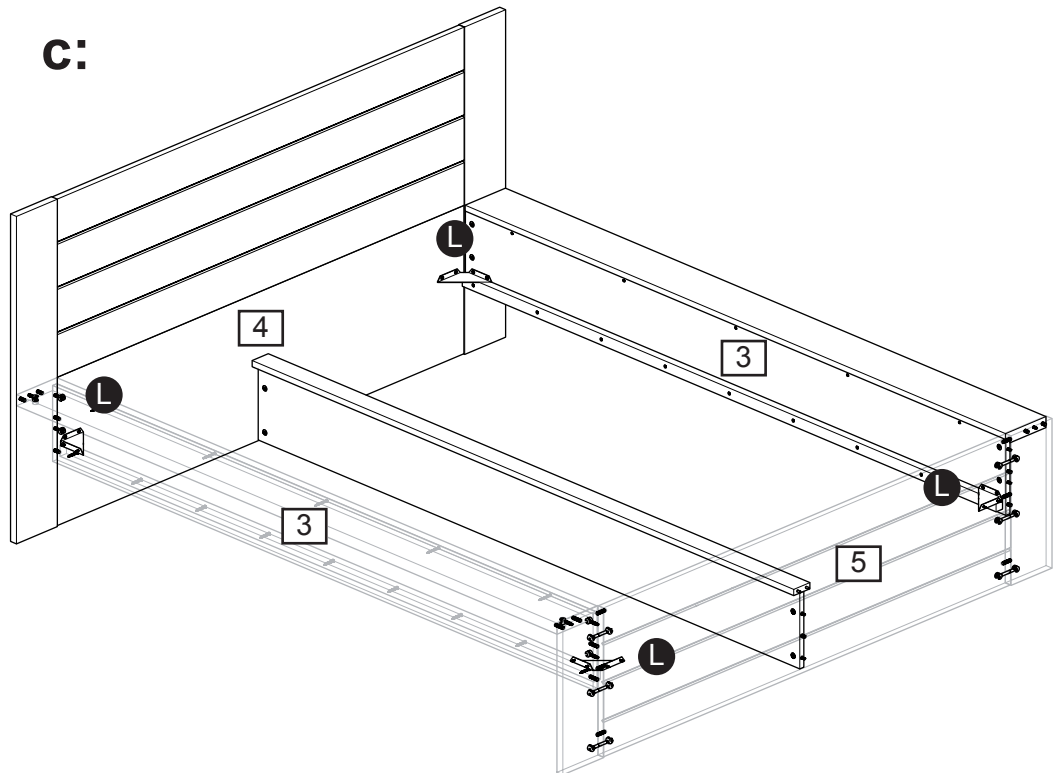
# Assembly Instructions

## Step 5 - continued

### Final assembly

**C:** Attach 4x connector bracket **L** with each 4x Back panel screw **D** on the corner of left & right rail **3**, head panel **4** and foot board **5**.

**C:**



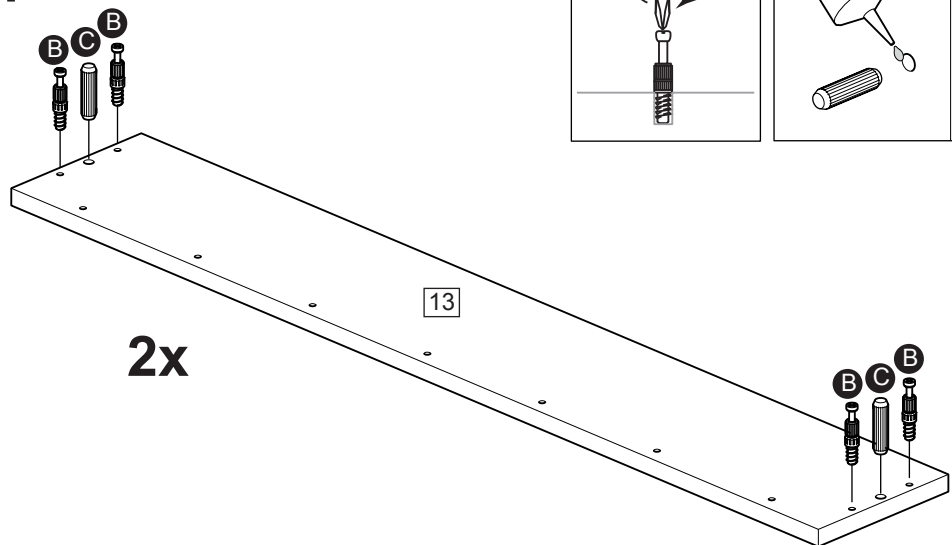
# Assembly Instructions

## Step 6

### Drawer assembly

**a:** Insert 2x wood dowel **C** with a small amount of glue **H** and screw 4 locking screw **B** into drawer back **13**.

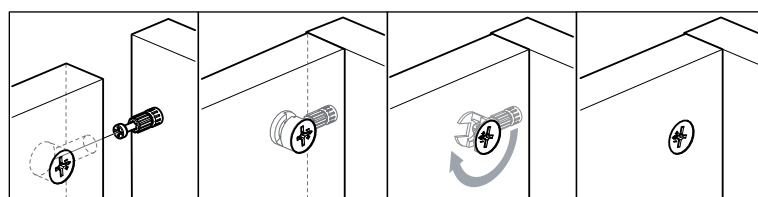
**a:**



**2x**

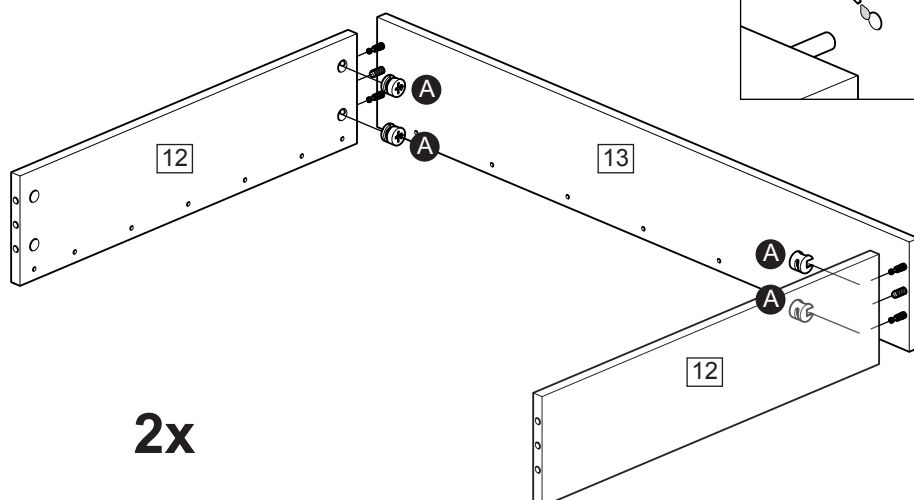
**b:** Apply a small amount of glue **H** onto 2x wood dowel **C** already fixed onto drawer back **13**.

**b:**



Attach left & right drawer side **12** onto drawer back **13**, insert 4x large locking nut **A** into left & right drawer side **12**.

Use a screwdriver to turn 4x large locking nut **A** clockwise to lock.



**2x**

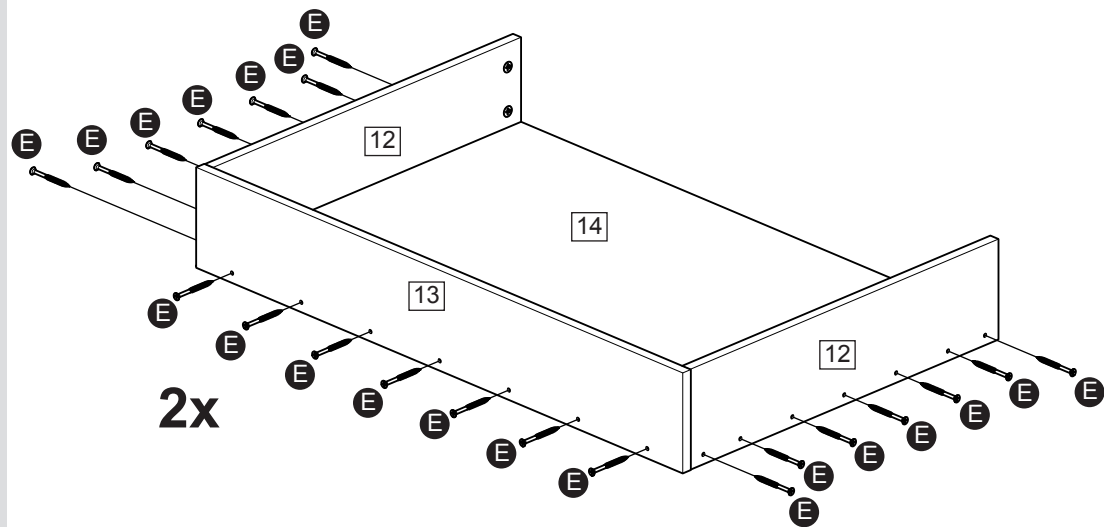
Continued on next page.

# Assembly Instructions

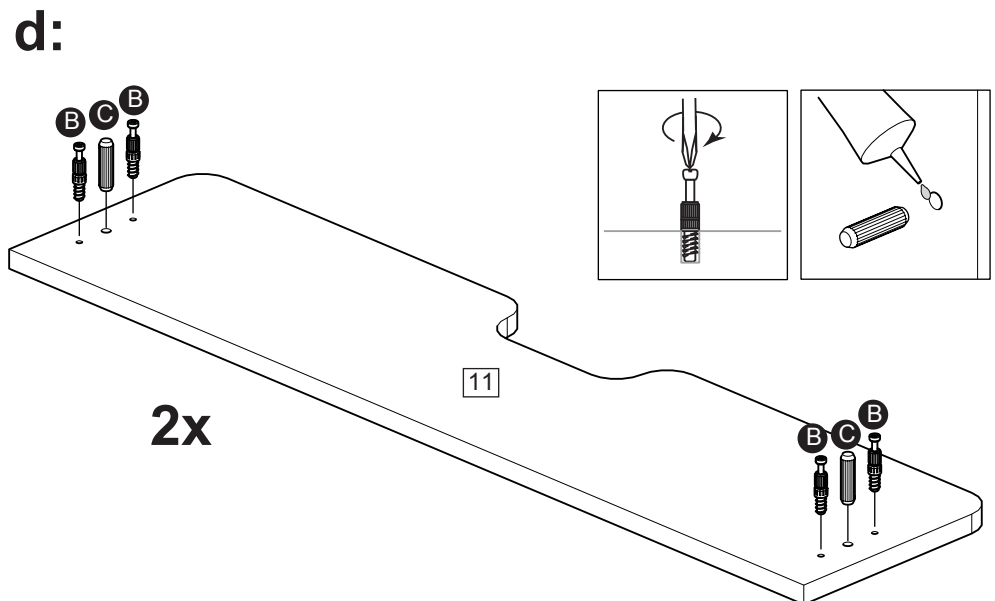
## Step 6 - continued

### Drawer assembly

**c:** Attach Drawer base **14** with 21x carcass screw **E** to left & right drawerside **12** & drawer back **13**.



**d:** Insert 2x wood dowel **C** with a small amount of glue **H** and screw 4x locking screw **B** into drawer front **11**.



Continued on next page.

# Assembly Instructions

## Step 6 - continued

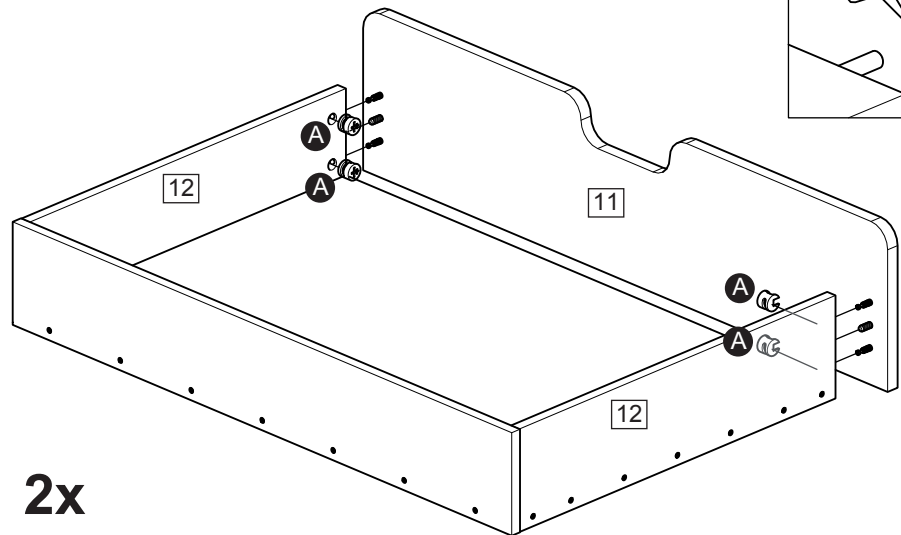
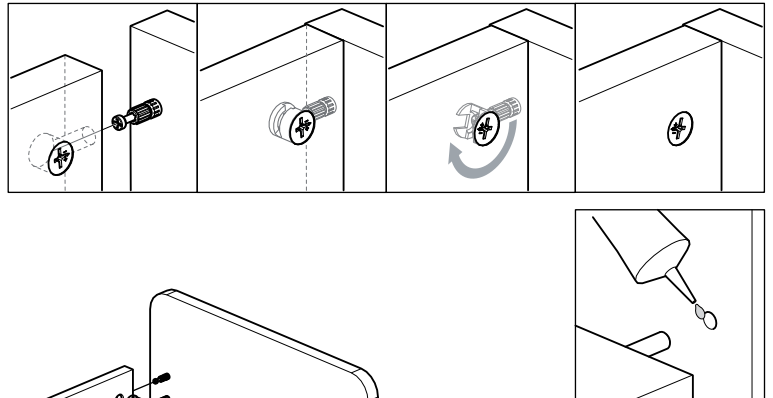
### Drawer assembly

**e:** Apply a small amount of glue **H** onto 2x wood dowel **C** already fixed onto drawer front **11**.

Attach left & right drawer side **12** onto drawer front **11**, insert 4x large locking nut **A** into left & right drawer side **12**.

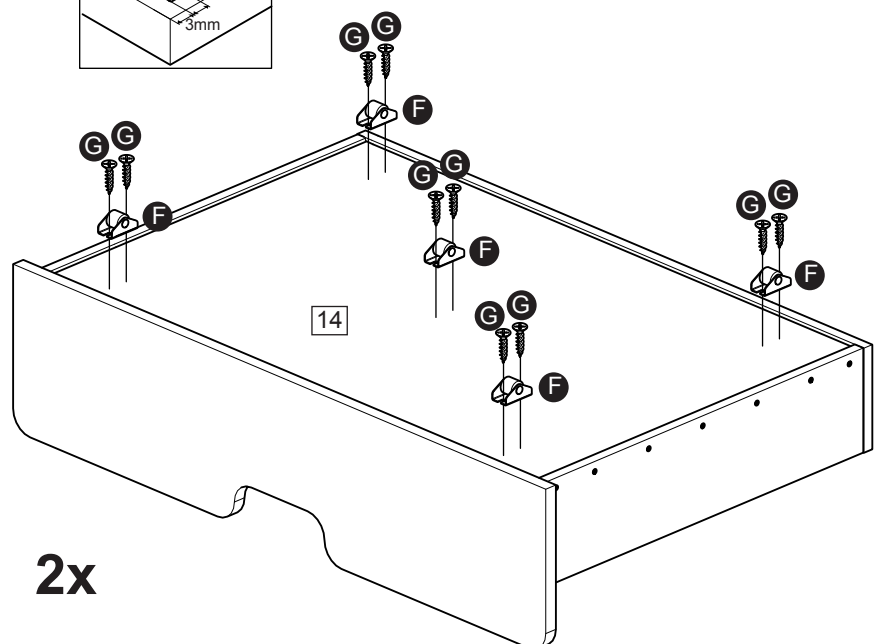
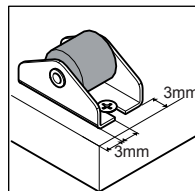
Use a screwdriver to turn 4x large locking nut **A** clockwise to lock.

**e:**



**f:** Attach 5x wheel **F** with each 2x chipboardscrew **G** on drawer base **14**.

**f:**



# Assembly Instructions

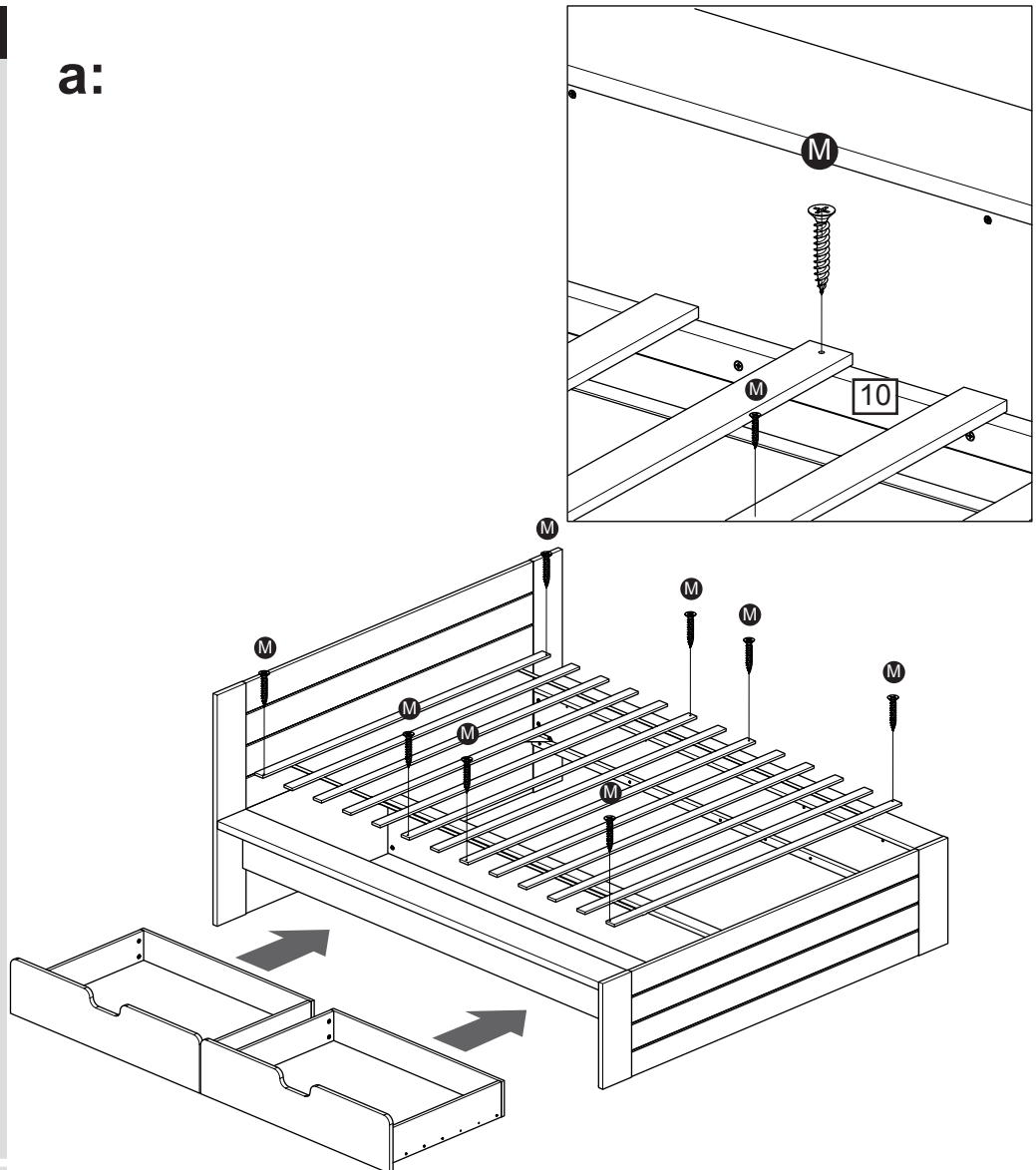
## Step 7

### Slats and drawers

**a:** Attach adult 4 ft 6 slats to support beam **10** with 8x chipboard screws **M**.

roll the 2 drawers under the bed.

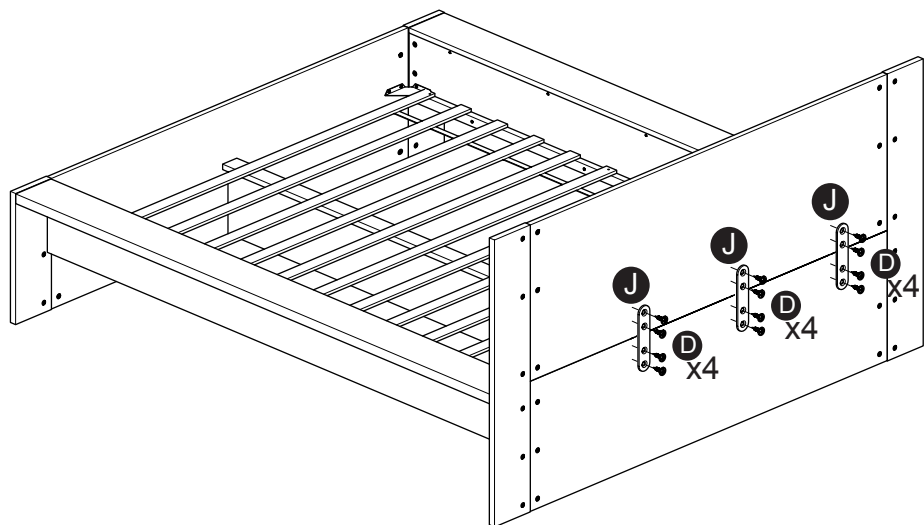
**a:**



**b:** Attach 3X small connecting plate **J** on back of head end with each 4x back panel screws **D**.

The assembly is now completed

**b:**



If you need help or have damaged or missing parts, call the **Customer Helpline:**  
**03456 400 800**