


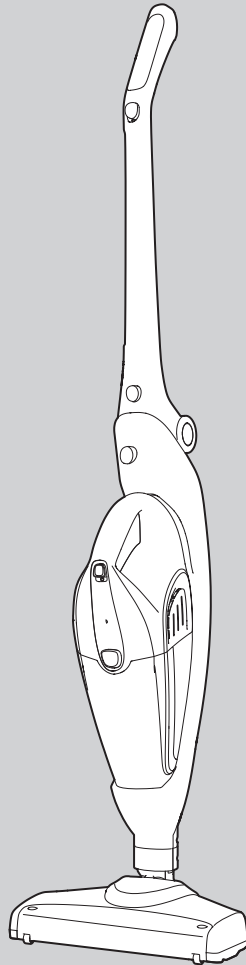
VC731000MUK Rev1

morphy richards®
smart ideas for your home



2-in-1 Cordless Bagless Upright Vacuum Cleaner

 Please read and keep these instructions for future use



For competitions, product hints and tips
and more join us at



www.morphyrichards.co.uk/blog



www.facebook.com/morphyrichardsuk



[@loveyourmorphy](https://twitter.com/loveyourmorphy)

www.morphyrichards.com

* Register online for your 2 year guarantee. See back of this instruction book for details. (UK and Ireland customers only)

Health and Safety

The use of any electrical appliance requires the following common sense safety rules.

Please read these instructions carefully before using the product.

- **WARNING: Whenever the cleaner is in use, due to the risk of entrapment in rotating parts, keep loose clothing, hair, fingers etc. away from the brush bar, nozzle and any handheld accessories.**
- **WARNING: Disconnect from the mains supply and remove the handheld vacuum cleaner (11) before carrying out any routine maintenance, such as cleaning any blockages, changing any filters or accessing the floor nozzle.**
- This appliance can be used by children aged from 8 years and above and persons with reduced physical, sensory or mental capabilities, or lack of experience and knowledge, if they have been given supervision or instruction concerning the use of the appliance in a safe way and understand the hazards involved.
- Children shall not play with the appliance.
- Cleaning and user maintenance shall not be undertaken by children without supervision.

Personal safety

- **WARNING: Only lift the product by the upright handle (1) and never pick the cleaner up by the floor nozzle.**
- To prevent accidental contact with the rotating brush, always remove the handheld unit before fitting, removing or cleaning the motorised floor brush (25).
- Never use in the presence of explosive liquid or vapours.
- Never pick up inflammable or poisonous liquids such as petrol, copier toner or other volatile substances. Never pick up acids, asbestos or asbestos dust.
- Never touch the adaptor, product or cable with wet hands.
- Unprofessional repairs can be dangerous for users.
- To protect against fire, electric shock and personal injury, do not immerse cord, adaptor or cleaner in water or other liquid.
- The appliance must never be left running unsupervised.

Location

- Do not use or keep this product outside.
- Do not store the appliance near hot surfaces eg. ovens or heating appliances.

Product safety

- This appliance is not intended for liquid/wet pick up.
- Never use the appliance without the filter being installed.
- Never use the appliance to vacuum hot ashes, broken glass, sharp objects or liquids.
- Never modify the cleaner in any way.
- Use only Morphy Richards spare parts and accessories.

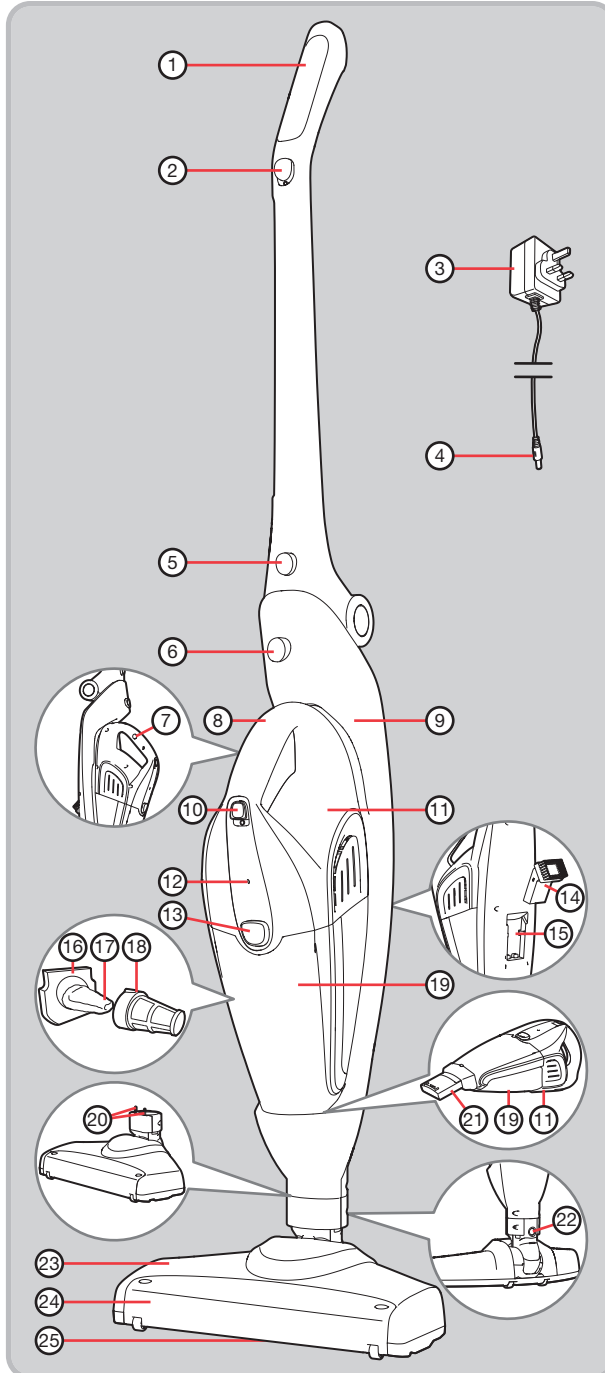
Electrical requirements

- Check that the voltage on the rating plate of the charging adaptor corresponds with your house electricity supply which must be A.C. (Alternating Current).
- Only use the charging adaptor (3) supplied with the unit.
- The battery is not a serviceable item. It should only be removed at the end of the product's life for recycling.

Contents

Health and safety	2
Electrical requirements	2
Product overview / Features	4
Dual functionality	5
Upright vacuuming: assembly	5
Charging	6
Using in upright mode	6 & 7
Handheld vacuum cleaning	7
Using the attachments on the handheld vacuum cleaner	8
Tool storage	8
Maintenance	8
Emptying the dust canister	8 & 9
Maintenance - filter	9
Storage	9
Disposal	10
Contact us	10
Notes	11
Guarantee	12

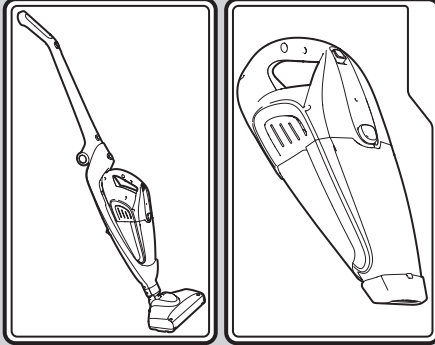
Product overview



Features

- (1) Upright handle
- (2) Upright On/Off button
- (3) Charging adaptor
- (4) Charging adaptor jack plug
- (5) Upright handle release button
- (6) Handheld vacuum cleaner release button
- (7) Charging point (on side of handheld vacuum cleaner handle (8))
- (8) Handheld vacuum cleaner handle
- (9) Main vacuum cleaner body
- (10) Handheld vacuum cleaner On/Off button
- (11) Handheld vacuum cleaner
- (12) Charging indicator light
- (13) Dust canister release button
- (14) Dusting brush (stores in recessed dusting brush storage area (15))
- (15) Recessed dusting brush storage area
- (16) Dust canister filter
- (17) Material filter
- (18) Mesh filter
- (19) Dust canister
- (20) Floorhead electrical connectors
- (21) Built-in extending crevice tool
- (22) Floorhead release button
- (23) Floorhead
- (24) Motorised floor brush viewing window
- (25) Motorised floor brush

Dual functionality



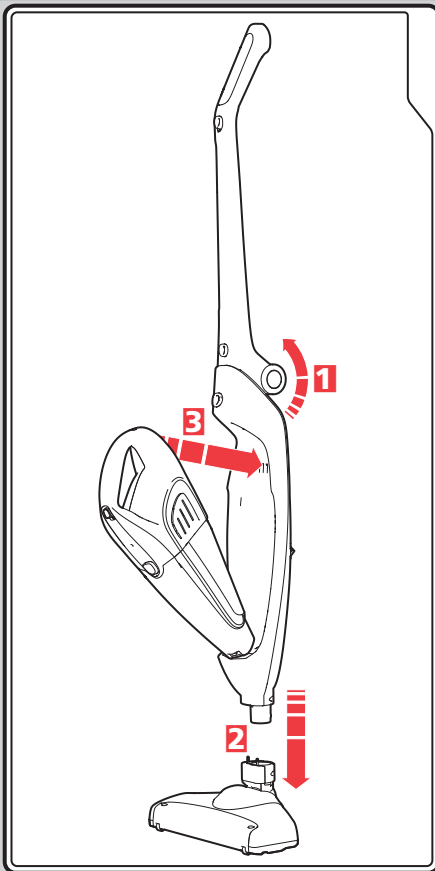
Upright vacuuming

Handheld vacuum cleaner

Your vacuum cleaner can easily be configured into two different cleaning modes:

- Upright vacuum cleaner for floors and carpets.
- Handheld vacuum cleaner **(11)** which can be carried with you whilst cleaning hard to reach places.

Upright vacuuming: assembly



1 Swing the upright handle **(1)** on the main vacuum cleaner upwards until it clicks into place in an upright position.

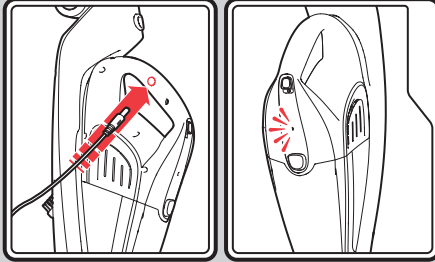
2 Place the motorised floor brush **(25)** on a level surface and align the connector on the neck of the motorised floor brush with the connector hole on the base of the main vacuum cleaner body **(9)**.

Holding the neck of the motorised floor brush in place, lower the main vacuum cleaner body onto the motorised floor brush until you hear the two pieces click into place.

When attaching the motorised floor brush, ensure that the latching mechanism is fully locked in place to ensure electrical connection is made.

3 Fit the handheld vacuum cleaner **(11)** into the cavity on the main vacuum cleaner body by firstly sliding the suction end into place over the suction hole in the main vacuum cleaner body cavity, then push the handle end in to place until a click is heard.

Charging



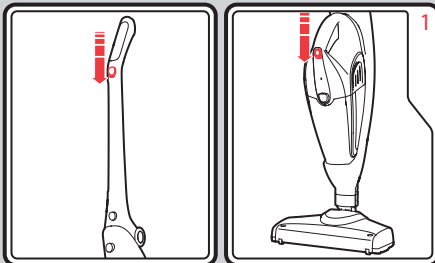
IMPORTANT: Ensure both On/Off buttons (2 & 10) are in the off (O) position before charging.

Connect the mains adaptor plug (3) into the mains supply. Attach the charging adaptor jack plug (4) into the charging point (7) on the side of the handle (8) of the handheld unit (11). The charging indicator light (12) will flash red whilst charging and become a constant red light when fully charged. A full charge may take 14 hours.

Depending on the cleaning mode and the type of surface being cleaned, the product will give 10-15 minutes cleaning time from a full charge.

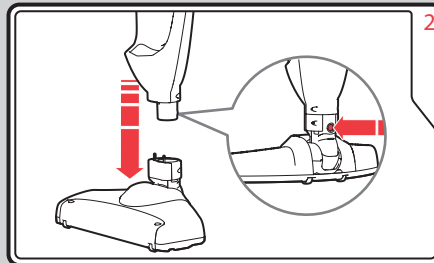
NOTE: With the product fully charged and the indicator light lit constantly red, if the charging adaptor is unplugged and replugged, the charging cycle will repeat, so it may be up to 14 hours before the light changes again to constant red.

Using in upright mode



Turn the product on by using either the upright On/Off button (2) or the handheld vacuum cleaner On/Off button (10). Both buttons operate by being pushed in a downwards direction.

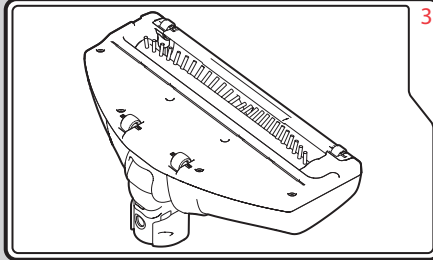
NOTE: The motorised floor brush (25) has stall protection. If the motor is stalled, eg. by a large object, by use on a very deep pile carpet, or because there are fibres or hairs wrapped around the brush, the brush will automatically stop. Switch off and remove the cause of the stall, wait for a few minutes and the stall protection will self-reset.



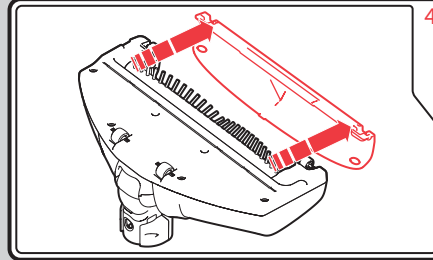
To clean the motorised floor brush, you must firstly remove the handheld vacuum cleaner (11) as shown in 'Handheld vacuuming', page 7.

Press the floorhead release button (22) and pull the floorhead (23) away as shown above.

Using in upright mode (continued)

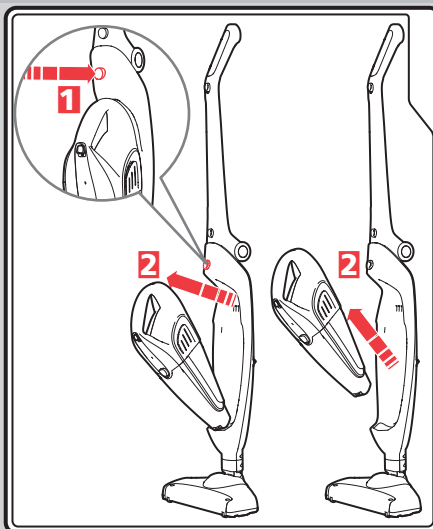


Turn the floorhead (23) over to inspect the motorised floor brush (25). Pull away any hairs or fibres from the motorised floor brush.



For easier access, remove the motorised floor brush viewing window (24) by pulling away by the front wheels. Carefully snip the trapped fibres with scissors, being careful not to damage the motorised floor brush (25), pull away from the motorised floor brush and dispose of. Replace the motorised floor brush viewing window and return the floorhead (23) to the main body, aligning it with the floorhead electrical connectors (20).

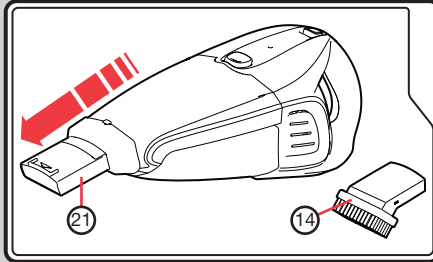
Handheld vacuum cleaning



This function is ideal for cleaning stairs, cars, curtains, upholstery and hard to reach places.

- 1** To separate the handheld vacuum cleaner (11) from the main vacuum cleaner body (9), press the handheld vacuum cleaner release button (6).
 - 2** Pull the handheld vacuum cleaner away from the main vacuum cleaner body.
- After use, return the handheld vacuum cleaner to the cavity on the main vacuum cleaner body by firstly sliding the suction end into place over the suction hole in the main vacuum cleaner body cavity, then push the handle end in to place until a click is heard.

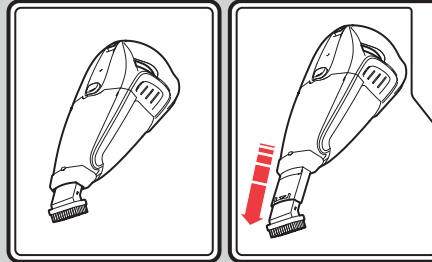
Using the attachments on the handheld vacuum cleaner



List of attachments

Crevice tool (21) for awkward places, corners and behind radiators etc. This tool is also useful on stairs. This tool is built into the end of the handheld unit and must be pulled out fully and locked into place for use.

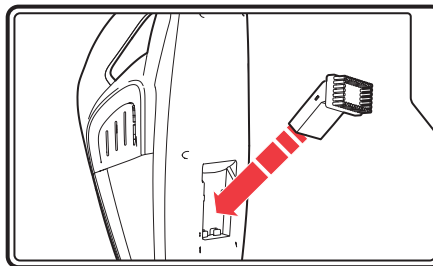
Dusting brush (14) for carpet, upholstery and stairs etc.



Push the dusting brush into the built-in extending crevice tool (21). If necessary, extend the crevice tool as required. The crevice tool can be used with or without the dusting brush.

Tool storage

When not in use, the dusting brush (14) may be stored in the recessed dusting brush storage area (15) on the back of the main vacuum cleaner body (9). Firstly, clip the non-brush end of the dusting brush in to the base of the recessed area over the two lips, then push the brush-end in to the top of the recessed area.



Maintenance

WARNING: Always remove the handheld vacuum cleaner (11) from the main vacuum cleaner body (9) and the charging adaptor (3) from the mains supply before undertaking any maintenance or cleaning procedures.

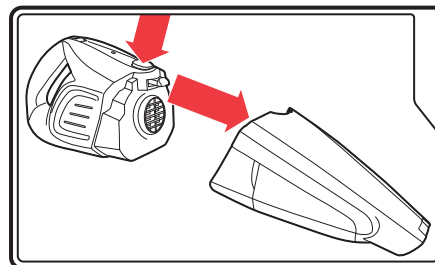
Your cleaner is manufactured to withstand normal day-to-day use, but an occasional wipe over with a damp cloth will help maintain its appearance. Take care not to get the electrical connections wet.

Abrasive cleaners should not be used.

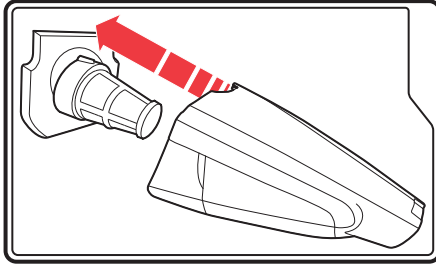
Emptying the dust canister

Empty the dust canister (19) and clean the filters regularly even if it does not look full, this will maintain the performance.

1. Remove the handheld vacuum cleaner (11) from the main vacuum cleaner body (9) (see 'Handheld vacuuming', page 7).
2. Press the dust canister release button (13) and pull the dust canister away from the handheld vacuum cleaner.



- Remove the dust canister filter and empty the dirt from inside the dust canister.



- If the dust canister filter (16) is not washed as instructed in 'Maintenance - filter', it is recommended that the filter is brushed or tapped clean before refitting on each empty of the dust canister.
- Replace the dust canister filter into the dust canister, then replace the dust canister back onto the handheld vacuum cleaner.
- Replace the handheld vacuum cleaner back into the main vacuum cleaner body if upright cleaning.

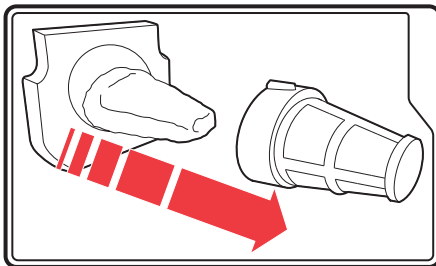
Maintenance - filter

The guarantee may be invalidated if the motor is damaged due to: using the appliance without the dust canister filter (16) installed; not cleaning the filters; or not replacing a damaged filter.

Cleaning the dust canister filter

To maintain suction, the dust canister filters must be cleaned each time the dust canister (19) is emptied.

- Follow steps 1-4 of 'Emptying the dust canister'.
- To disassemble the filter, pull the mesh filter (18) off the material filter (17). Clean both parts.



- Every month, wash the filters in luke-warm water and thoroughly air dry before re-fitting.

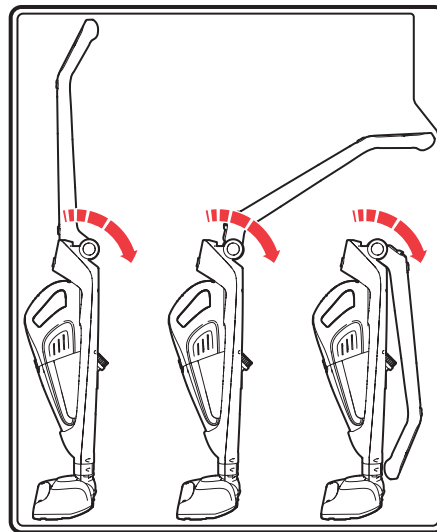
IMPORTANT: Do not wash filters with hot water or detergents.

IMPORTANT: Do not use heated appliances to dry filters.

- Replace the mesh filter onto the material filter then replace the assembled filter back into the dust canister. Return the dust canister back onto the handheld vacuum cleaner (11).
- Replace the handheld vacuum cleaner back into the main vacuum cleaner body (9) if upright cleaning.

Storage

- Fit the handheld vacuum cleaner (11) back into the cavity on the main vacuum cleaner body (9) by firstly sliding the suction end into place over the suction hole in the main vacuum cleaner body cavity, then push the handle end in to place until a click is heard.
- The upright handle (1) is collapsible for compact storage by pressing the upright handle release button (5).
- Place the dusting brush (14) into the recessed dusting brush storage area (15) (see 'Tool storage', page 8).



WARNING: When locking the handle, keep this area clear. Be careful not to trap your fingers or any loose items of clothing etc.

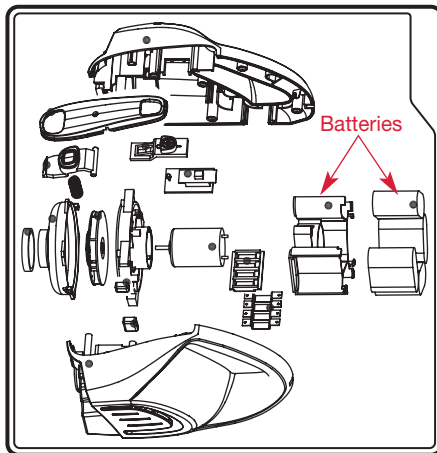
Disposal



This product contains sealed nickel metal-hydride batteries. When it reaches the end of its useful life, it must not be disposed of in normal household waste. The battery must be removed and disposed of at an authorised recycling plant. Your local authority will have a centre which accepts such waste for recycling.



1. Undo the seven screws from the main body of the handheld vacuum cleaner (11).
2. Separate the two halves of the main body of the handheld vacuum cleaner.
3. Remove the eight battery cells and dispose of in accordance with local regulations.
4. Dispose of the remainder of the product also in accordance with local regulations.



WARNING: Batteries and products containing batteries must never be disposed of in fires.

Do not remove or damage the battery casing.

Contact us

Helpline

If you are having a problem with your appliance, please call our Helpline, as we are more likely to be able to help than the store you purchased the item from.

Please have the product name, model number and serial number to hand when you call to help us deal with your enquiry quicker.

UK Helpline: 0844 871 0960

IRE Helpline: 1800 409 119

Spares: 0844 873 0726

Talk To Us

If you have any questions or comments, or want some great tips to help you get the most out of your products, join us online:

Blog: www.morphyrichards.co.uk/blog

Facebook: www.facebook.com/morphyrichardsuk

Twitter: @loveyourmorphy

Website: www.morphyrichards.com

VC731000MUK Rev1 09/13

Registering your 2 year guarantee

Your standard 1 year guarantee is extended for an additional 12 months when you register the product within 28 days of purchase with Morphy Richards. If you do not register the product with Morphy Richards within 28 days, your product is guaranteed for 1 year. To validate your 2 year guarantee, register with us online at

www.morphyrichards.co.uk

Or call our customer registration line

UK 0844 871 0962

IRE 1800 409 119

N.B. Each qualifying product needs to be registered with Morphy Richards individually.

Please note that the 2 year guarantee is only available in the UK and Ireland. Please refer to the 1 year guarantee for more information.

Your 1 year guarantee

To qualify for the 1 year guarantee, the appliance must have been used according to the instructions supplied.

It is important to retain the retailer's receipt as proof of purchase. Staple your receipt to this back cover for future reference.

Please quote the following information if the product develops a fault. These numbers can be found on the base of the product.

Model no.

Serial no.

All Morphy Richards products are individually tested before leaving the factory. In the unlikely event of any appliance proving to be faulty within 28 days of purchase, it should be returned to the place of purchase for it to be replaced. If the fault develops after 28 days and within 1 year (2 years if registered) of original purchase, you should contact the Helpline number quoting Model number and Serial number on the product, or write to Morphy Richards at the address shown.

You may be asked to return a copy of proof of purchase. Subject to the exclusions set out below (see Exclusions), the faulty appliance will then be repaired or replaced and dispatched usually within 7 working days of receipt.

If you suspect a fault, follow the simple checks detailed below before retrying the appliance or calling the helpline.

- Check the filters for blockages and clean.
- Check the tools / tubes for blockages.
- Check the appliance is charged.
- Check the socket used for charging is working and the charging adaptor is firmly in the socket during charging.

If, for any reason, this item is replaced during the 1 year guarantee period, the guarantee on the new item will be calculated from original purchase date. Therefore it is vital to retain your original till receipt or invoice to indicate the date of initial purchase. To qualify for the 1 year guarantee, the appliance must have been used according to the instructions supplied.

This appliance is intended for domestic use only. Misuse or use for commercial or any other purpose will render the guarantee invalid.

Exclusions

Morphy Richards shall not be liable to replace or repair the goods under the terms of the guarantee where:

- 1 The fault has been caused or is attributable to accidental use, misuse, negligent use or used contrary to the manufacturer's recommendations or where the fault has been caused by power surges or damage caused in transit.
 - 2 The appliance has been used on a voltage supply other than that stamped on the products.
 - 3 Repairs have been attempted by persons other than our service staff (or authorised dealer).
 - 4 The appliance has been used for hire purposes or non domestic use.
 - 5 The appliance is second hand.
 - 6 Morphy Richards reserves the right not to carry out any type of servicing under the guarantee at its discretion.
 - 7 The guarantee excludes consumables such as the filter.
- This guarantee does not confer any rights other than those expressly set out above and does not cover any claims for consequential loss or damage. This guarantee is offered as an additional benefit and does not affect your statutory rights as a consumer. Morphy Richards products are intended for household use only. See usage limitations within the location safety instructions.

Disclaimer

Morphy Richards has a policy of continuous improvement in product quality and design. The company, therefore reserves the right to change the specification of its models at any time.



For electrical products sold within the European Community. At the end of the electrical products useful life, it should not be disposed of with household waste. Please recycle where facilities exist. Check with your Local Authority or retailer for recycling advice in your country.



NiMH

Battery should be removed at the end of the product's life for recycling.

**IF YOU ARE HAVING A PROBLEM
WITH ONE OF OUR PRODUCTS,
CALL OUR HELPLINE:**

**UK: 0844 871 0960
EIRE: 1800 409 119
SPARES: 0844 873 0726**

morphy richards

The After Sales Division
Morphy Richards Ltd
Mexborough,
South Yorkshire,
England, S64 8AJ

www.morphyrichards.com

