



CLEANVIEW® COMPACT
1427

IMPORTANT SAFETY INSTRUCTIONS

READ ALL INSTRUCTIONS BEFORE USING YOUR VACUUM.

When using an electrical appliance, basic precautions should be observed, including the following:

WARNING

TO REDUCE THE RISK OF FIRE, ELECTRIC SHOCK, OR INJURY:

- » This appliance can be used by children aged from 8 years and above and persons with reduced physical, sensory or mental capabilities or lack of experience and knowledge if they have been given supervision or instruction concerning use of the appliance in a safe way and understand the hazards involved. Cleaning and user maintenance shall not be made by children without supervision.
- » Children should be supervised to ensure that they do not play with the appliance.
- » If the supply cable is damaged, it must be replaced by the manufacturer, its service agent or similarly qualified persons in order to avoid a hazard.
- » Keep hair, loose clothing, fingers, and all parts of body away from openings and moving parts of the appliance and its accessories.
- » Use indoors only.
- » For dry pick up only.
- » Do not leave machine when it is plugged in.
- » Do not service machine when it is plugged in.
- » Do not use with damaged cable or plug.
- » If appliance is not working as it should, has been dropped, damaged, left outdoors, or dropped into water, have it repaired at an authorized service center.
- » Do not handle unit with wet hands.
- » Do not pull or carry by cable, use cable as a handle, close door on cable, pull cable around sharp corners or edges, run appliance over cable, or expose cable to heated surfaces.
- » Do not unplug by pulling on cable. Unplug by grasping plug.
- » Do not run appliance over cable.
- » Do not handle plug or appliance with wet hands.
- » Do not expose hair, loose clothing, fingers or body parts to openings or moving parts.
- » Do not pick up hot or burning objects such as cigarettes, matches, or hot ashes.
- » Do not pick up flammable or combustible materials (lighter fluid, petrol, kerosene, etc.) or use in the presence of explosive liquids or vapours.
- » Do not use appliance in an enclosed space filled with vapours given off by oil base paint, paint thinner, some moth proofing substances, flammable dust, or other explosive or toxic vapours.
- » Remove plug from electrical socket before cleaning or maintaining the appliance.
- » Do not pick up toxic material (chlorine bleach, ammonia, drain cleaner, petrol, etc.).
- » Do not use for any purpose other than described in this User's Guide.
- » Use only manufacturer's recommended attachments.
- » Keep appliance on a level surface
- » Turn off all controls before unplugging.
- » Be extra careful when cleaning stairs.
- » This appliance is provided with double insulation. Use only identical replacement parts.
- » Pay close attention when working around children.

SAVE THESE INSTRUCTIONS FOR FUTURE USE

FOR OPERATION ON A 220-240 VOLT A.C. 50/60 HZ POWER SUPPLY ONLY.

This model is for household use only.

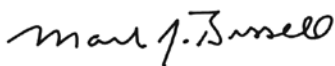
Thanks for buying a BISSELL vacuum

We're glad you purchased a BISSELL vacuum. Everything we know about floor care went into the design and construction of this complete, high-tech home cleaning system.

Your BISSELL vacuum is well made, and we back it with a limited one-year guarantee. We also stand behind it with a knowledgeable, dedicated Consumer Care department, so, should you ever have a problem, you'll receive fast, considerate assistance.





My great-grandfather invented the floor sweeper in 1876. Today, BISSELL is a global leader in the design, manufacture, and service of high-quality homecare products like your BISSELL vacuum.

Thanks again, from all of us at BISSELL.



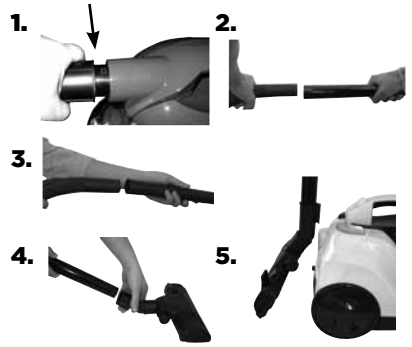
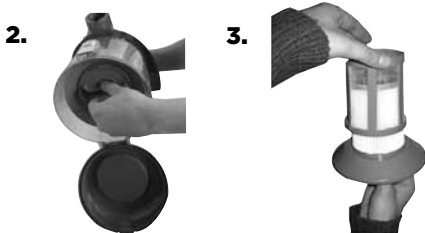
Mark J. Bissell
Chairman & CEO

Symbol Definitions

	WARNING	AN ACTION OR ATTENTION IS NEEDED TO THIS AREA IN ORDER TO REDUCE THE RISK OF ELECTRIC SHOCK, FIRE, OR INJURY
	TIP	NOTE OR HINT WHICH IS NOT ESSENTIAL BUT MAY IMPROVE USABILITY
	GUIDE	READ USER GUIDE FOR COMPLETE SAFETY AND USER INSTRUCTIONS
	WEEE	DO NOT THROW THE APPLIANCE AWAY WITH THE NORMAL HOUSEHOLD WASTE AT THE END OF ITS LIFE, BUT HAND IT IN AT AN OFFICIAL COLLECTION POINT FOR RECYCLING. BY DOING THIS YOU WILL HELP TO PRESERVE THE ENVIRONMENT.



- » Before cleaning under low furniture, check area first for objects that might harm the unit or block the hose.
- » Hair, string and small objects can block the hose and tools. Check them occasionally for obstructions.
- » Use the air flow regulator to reduce air flow as needed when using the tools.
- » For maximum cleaning performance, check the filters often and clean or replace if necessary.

A**B****C1****C2****D1****D2****D3**

A Product View



Do not plug in your cleaner until you have completely assembled it per the following instructions and are familiar with all instructions and operating procedures.

- | | |
|---------------------------|---|
| 1 Air Flow Regulator | 9 Emptying Button |
| 2 Handle | 10 Easy Empty™ Dirt Cup |
| 3 Extension Wands | 11 Brush Switch |
| 4 Hose | 12 Multi-Surface Floor Nozzle |
| 5 Hose Connector | 13 Combination Crevice Tool/
Dusting Brush |
| 6 Carry Handle | 14 Pet TurboBrush™ Tool |
| 7 Dirt Cup Release Button | |
| 8 Dirt Cup Filter | |

B Assembly

1. Connect hose to vacuum by inserting hose connector on the end of the hose into the suction inlet. Make sure the hose is positioned so the tabs on the hose connector line up with the notches on the suction inlet. Once inserted into the suction inlet, turn counter clockwise to lock into place.
 2. Attach extension wands section together by inserting into one another and twisting slightly to tighten.
 3. Connect hose handle to the end of the extension wand and twist slightly to tighten.
 4. Connect floor nozzle to the end of the extension wand and twist slightly to tighten.
 5. Once assembled, you can store your vacuum by inserting the storage clip (located on the back of the floor nozzle) into the storage slot on the rear of the vacuum.
- Colours may vary from models shown.



Before using your vacuum, make sure that the dirt cup and all filters are in place. Do not operate your vacuum without the dirt cup and filters.



Be careful to avoid injury as cord retracts very quickly.



Plastic film can be dangerous. To avoid danger of suffocation, keep away from babies and children.

C Operations

Power cord

The power cord is located at the rear of the vacuum. Gently pull out the power cord, watching for the yellow line. Stop pulling the power cord once the yellow line is visible. There is also a red line, which indicates the end of the usable cord. Do not pull the power cord out beyond the red line.

C1 - Automatic cord rewind

Your vacuum is equipped with an automatic cord rewind. When cleaning is finished, press the power button OFF and grasp the plug to disconnect from the electrical outlet. Hold the plug and press the automatic cord rewind button to rewind the cord automatically.

C2 - Power button


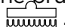
Turn the power ON or OFF by pressing lightly downward on the power button (Ⓢ).

Special tools

Your BISSELL CleanView Pet Compact vacuum is not only a powerful carpet and rug vacuum cleaner, it's also a versatile bare floor and above floor vacuum cleaner when you select one of the special tools.

Floor nozzle (12)

Use to vacuum carpets, rugs and bare floors. Swivel head turns to get into tight spaces and fits under cabinets.

1. To vacuum carpets and rugs, push the brush switch to the carpet position . This will pull the brushes up into the floor nozzle.
2. To vacuum bare floors, push the brush switch to the bare floor position . This will extend the brushes down from the floor nozzle.

Combination Crevice Tool/Dusting Brush (13)

Use the crevice tool in tight, narrow spaces. Use the dusting brush to clean curtains, draperies, cushions and fabrics.

Pet TurboBrush™ Tool (14)

(select models only)

Use rotating brush action for small, flat areas such as cushions and beds.

NOTE: Press down gently and pull toward you in a raking motion. Too much pressure will cause the brush to stop rotating.

Air flow regulator (2)

Open the air flow regulator by sliding the regulator up towards the extension wand to an open position. This will reduce the suction power for vacuuming delicate fabrics.

For full suction power, close the air flow regulator by sliding the regulator down to the closed position.

D Care & Storage

D1 - Empty the dirt cup

Empty the dirt cup as soon as the dirt reaches the "FULL" lines on the sides of the dirt cup.

1. Unplug the vacuum from the electrical outlet.
2. Remove the hose by turning the hose connector counter clockwise and pulling it out from the suction inlet. Set hose aside.
3. Press the dirt cup release button on the carry handle and lift up to remove the dirt cup.
4. Choose an emptying method. Method #2 is recommended for allergy sufferers.

Method #1 – Hold the dirt cup over a rubbish bin and push the emptying button to open the bottom. Close the bottom after the dirt empties.

Method #2 – Place a plastic bag over the bottom of the dirt cup. Push the emptying button through the plastic to open the bottom. After the dust settles, close the bottom and remove the bag to discard.

5. Replace the dirt cup by placing it back into the vacuum and pushing down on the carry handle until it snaps back into place.

D2 - Cleaning the dirt cup filter

Use only BISSELL replacement filters in your vacuum.

1. Unplug the vacuum from the electrical outlet.
2. The dirt cup filters can be reached by removing the dirt cup from the vacuum, grasping the handle on the bottom of the dirt cup filter assembly and turning counter clockwise to unlock. Pull straight down to remove.
3. Remove the dirt cup filter screen by grasping the bottom of the filter frame base and pulling straight up.

4. The dirt cup filter screen and dirt cup filter can be hand washed in cold water with a mild detergent. Rinse well and air dry thoroughly before placing back onto the filter frame base.

5. Attach the dirt cup filter back onto the filter frame base by lining up the tabs on the filter base with the notches on the dirt cup filter and turning clockwise to lock back into place.

6. Attach the dirt cup filter screen back on to the dirt cup filter by sliding it down over the dirt cup filter, making sure that the tabs on the bottom of the dirt cup filter screen line up with the notches on the dirt cup filter.

7. Insert the dirt cup filter assembly back into the dirt cup by lining up the tabs on the top of the dirt cup filter assembly with the notches inside the top of the dirt cup and turning the handle on the bottom of the dirt cup filter assembly clockwise to lock into place.

D3 - Replacing the post-motor filter

The post-motor filter assists in the filtration process to return cleaner air to the room. Use only BISSELL replacement filters.

1. Unplug the vacuum from electrical outlet.
2. Remove the filter door (located on the back of the vacuum) by pushing down on the tab and pulling out and away from the vacuum.
3. The post-motor filter can be hand washed in cold water with a mild detergent. Rinse well and air dry thoroughly before placing back into the vacuum.
4. Replace the filter door by placing the tabs on the bottom of the filter door into the notches on the bottom of the post-motor filter compartment and pushing the tab forward back into the vacuum to lock into place.



To reduce the risk of electric shock, turn power switch off and disconnect plug from electrical socket before performing maintenance or care.



Do not operate cleaner with damp or wet filters or without all filters in place.

This product is intended for household use only and not for commercial or industrial use. Vacuuming of dust from products like plaster, concrete or ashes will damage the motor and void the guarantee.

Clearing clogs from the dirt cup

1. Unplug the vacuum from electrical outlet.
2. Remove the dirt cup from the vacuum, following steps 1-3 of Emptying the dirt cup on page 6.
3. Remove the dirt cup filter assembly from the dirt cup, following step 2 of Clean the dirt cup filter on page 6.
4. Tap the dirt cup filter assembly over a garbage container to remove any dirt or debris from the cyclone screen that surrounds the dirt cup filter.
5. Reach up into the dirt cup to clear any dirt or debris from the dirt cup.
6. Check to see if there are any clogs in the suction inlet.
7. After clearing any dirt or debris from the dirt cup, replace the dirt cup filter assembly back in the dirt cup following step 8 of Cleaning the dirt cup filter on page 6.

Maintaining the Pet TurboBrush™ Tool

The Pet TurboBrush™ Tool should be checked regularly for clogs or debris wrapping around the brush.

1. Unplug the vacuum from the outlet.
2. If the clog is present or debris is visible, turn the collar on the neck of the Pet TurboBrush™ Tool counterclockwise to the unlocked position to remove the faceplate and clear any obstructions.
3. To clean debris from the brush, remove the brush from the drive belt and clean debris.
4. Reposition the drive belt on the brush. Place the ends of the brush in the slots on the sides. Reposition the faceplate and turn the collar clockwise to the locked position.

Replacement Parts

These items are available for purchase as accessories for your BISSELL vacuum:
To purchase visit www.BISSELL.com.

PART #	PART NAME		PART #	PART NAME	
203-1771	Dirt Cup Filter Screen		203-1772	Dirt Cup Filter	
203-1786	Post-Motor Filter		160-3821	Floor Nozzle	
203-1537	Hose with Handle		203-1538	Extension Wands (2)	
203-1539	Combination Crevice Tool/ Dusting Brush		160-3063	Pet TurboBrush™ Tool	

Consumer Guarantee

This Guarantee only applies outside of the USA and Canada. It is provided by BISSELL International Trading Company BV ("BISSELL").

This Guarantee is provided by BISSELL. It gives you specific rights. It is offered as an additional benefit to your rights under law. You also have other rights under law which may vary from country to country. You can find out about your legal rights and remedies by contacting your local consumer advice service. Nothing in this Guarantee will replace or lessen any of your legal rights or remedies. If you need additional instruction regarding this Guarantee or have questions regarding what it may cover, please contact BISSELL Consumer Care or contact your local distributor.

This Guarantee is given to the original purchaser of the product from new and is not transferable. You must be able to evidence the date of purchase in order to claim under this Guarantee.

Limited One-Year Guarantee

Subject to the *EXCEPTIONS AND EXCLUSIONS identified below, BISSELL will for one year from the date of purchase by the original purchaser repair or replace (with new or remanufactured components or products), at BISSELL's option, free of charge, any defective or malfunctioning part or product.

BISSELL recommends that the original packaging and evidence of the date of purchase be kept for the duration of the Guarantee period in case the need arises within the period to claim on the Guarantee. Keeping the original packaging will assist with any necessary re-packaging and transportation but is not a condition of the Guarantee.

If your product is replaced by BISSELL under this Guarantee, the new item will benefit from the remainder of the term of this Guarantee (calculated from the date of the original purchase). The period of this Guarantee shall not be extended whether or not your product is repaired or replaced.

*EXCEPTIONS AND EXCLUSIONS FROM THE TERMS OF THE GUARANTEE

This Guarantee applies to products used for personal domestic use and not commercial or hire purposes. Consumable components such as filters, belts and mop pads, which must be replaced or serviced by the user from time to time, are not covered by this Guarantee.

This Guarantee does not apply to any defect arising from fair wear and tear. Damage or malfunction caused by the user or any third party whether as a result of accident, negligence, abuse, neglect, or any other use not in accordance with the User Guide is not covered by this Guarantee.

An unauthorised repair (or attempted repair) will void this Guarantee whether or not damage has been caused by that repair/attempt.

Removing or tampering with the Product Rating Label on the product or rendering it illegible will void this Guarantee.

SAVE AS SET OUT BELOW BISSELL AND ITS DISTRIBUTORS ARE NOT LIABLE FOR ANY LOSS OR DAMAGE THAT IS NOT FORESEEABLE OR FOR INCIDENTAL OR CONSEQUENTIAL DAMAGES OF ANY NATURE ASSOCIATED WITH THE USE OF THIS PRODUCT INCLUDING WITHOUT LIMITATION LOSS OF PROFIT, LOSS OF BUSINESS, BUSINESS INTERRUPTION, LOSS OF OPPORTUNITY, DISTRESS, INCONVENIENCE OR DISAPPOINTMENT. SAVE AS SET OUT BELOW BISSELL'S LIABILITY WILL NOT EXCEED THE PURCHASE PRICE OF THE PRODUCT.

BISSELL DOES NOT EXCLUDE OR LIMIT IN ANY WAY ITS LIABILITY FOR (A) DEATH OR PERSONAL INJURY CAUSED BY OUR NEGLIGENCE OR THE NEGLIGENCE OF OUR EMPLOYEES, AGENTS OR SUBCONTRACTORS; (B) FRAUD OR FRAUDULENT MISREPRESENTATION; (C) OR FOR ANY OTHER MATTER WHICH CANNOT BE EXCLUDED OR LIMITED UNDER LAW.

Consumer Care

If your BISSELL product should require service or to claim under our Limited One-Year Guarantee, please visit:

Website or E-mail:
www.BISSELL.com

For UK inquiries:
Telephone: 0844.888.6644
Monday - Thursday 9am - 5pm
Friday 9am - 4pm

Or write:
BISSELL Homecare (Overseas) Inc.
Ground Floor
226 Berwick Avenue
Slough
Berkshire, SL1 4QT
United Kingdom

Visit the BISSELL website: www.BISSELL.com

When contacting BISSELL, have model number of cleaner available.

Please record your Model Number: _____
Please record your Purchase Date: _____

NOTE: Please keep your original sales receipt. It provides proof of the date of purchase in the event of a Guarantee claim. See Guarantee for details.



©2014 BISSELL Homecare, Inc.
Grand Rapids, Michigan
All rights reserved. Printed in China
Part Number 160-3820 Rev 04/14
Visit our website at: www.BISSELL.com

