

# Angelcare<sup>®</sup>

FOR YOUR PEACE OF MIND

## OWNER'S MANUAL

DIGITAL VIDEO, MOVEMENT  
& SOUND BABY MONITOR

Model AC1100



**DON'T  
FORGET**

## IMPORTANT ADVICE FOR INITIAL SETUP



### Movement Alarm

Your monitor comes with the movement alarm activated. When switching on your monitor it will alarm, with or without the Sensor Pad plugged in, if no movement is detected. Deactivate the movement function to use the monitor without the Sensor Pad.



### Batteries

Insert the enclosed rechargeable batteries into the Parent Unit. If inserted incorrectly the Parent Unit will not charge when placed in the charging cradle. The battery icon will flash briefly on the Parent Unit screen to indicate charging.




### Cord Safety

Ensure the Nursery Unit is at least 1 metre away from your baby's cot. The Sensor Pad cord must always be kept out of reach of baby and secured using the cord cover kit provided.

**PLEASE FOLLOW THE INSTRUCTIONS CAREFULLY FOR CORRECT SETUP**

Please **DO NOT** return this product to the store. For assistance please contact our helpline on **0345 009 1789** or email [helpline@babyhelpline.co.uk](mailto:helpline@babyhelpline.co.uk)  
Mon - Fri 10am - 4pm, excluding bank holidays.

**TABLE OF CONTENTS**  
.....

 **WARNINGS**..... 3

AC1100 SETUP REQUIREMENTS ..... 8

STEP 1 - Charging the Parent Unit ..... 9

STEP 2 - Installing the Sensor Pad ..... 10

STEP 3 - Setting up the Nursery Unit.....13

STEP 4 - Turning on your Monitor .....14

STEP 5 - Testing and getting to know your Monitor .....15

STEP 6 - Activating and deactivating  
additional functions.....19

Troubleshooting .....25

Limited warranty..... 27

Technical specifications.....28

**OWNER’S MANUAL**

KEEP YOUR OWNER’S MANUAL FOR FUTURE REFERENCE.

PLEASE READ THE WARNINGS AND INSTRUCTIONS CAREFULLY BEFORE ASSEMBLING & USING THE PRODUCT.

FAILURE TO FOLLOW THE WARNINGS AND THE INSTRUCTIONS COULD RESULT IN SERIOUS INJURY OR DEATH OR DAMAGES TO THE PRODUCT.

THE SENSOR PAD FEATURE IS NOT FOR USE WITH ADULTS, CHILDREN OR INFANTS OLDER THAN 24 MONTHS.

THE SENSOR PAD IS NOT INTENDED TO BE USED TO DETERMINE IF A CHILD IS OUT OF THE CRIB.

 **WARNING**

Adult assembly required.  
Keep small parts away from children when assembling.



This Angelcare Monitor is a Personal Care Product. Please DO NOT return this to the store where you purchased it from. If you have any questions or require assistance please call the Angelcare Helpline on 0345 009 1789 or email [helpline@babyhelpline.co.uk](mailto:helpline@babyhelpline.co.uk).

The Baby Helpline is open Monday to Friday, 10am to 4pm. The helpline is closed on bank holidays.

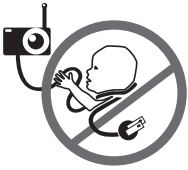
For additional FAQs and to download instruction manuals visit; [www.angelcare.co.uk](http://www.angelcare.co.uk).

To order spare parts for your Angelcare Baby Monitor visit; [www.megababy.co.uk](http://www.megababy.co.uk).

# ⚠️ WARNINGS

**1. THIS PRODUCT CANNOT REPLACE RESPONSIBLE ADULT SUPERVISION.** This product is designed to aid in the monitoring of your child. When using the monitor, you must still provide the supervision necessary for the continued safety of your child. Monitoring of premature babies, or those considered to be at risk, should always be carried out under the supervision of a health professional. This monitor **SHOULD NOT** be used as a medical device, nor as a device to prevent Sudden Infant Death Syndrome (SIDS).

**2. WARNING Strangulation Hazard – Children have STRANGLED in cords.** Keep adapter cords out of the reach of children (more than 1 m away). **NEVER** use Sensor Pad(s) without the protective cord covering. Check protective cord covering before each use. Immediately discontinue use of Sensor Pad(s) if protective covering is damaged or broken.



**3. Never use extension cords with AC adapters. ONLY use the AC adapters provided.**

**4. When an AC Adapter is plugged into an electrical outlet, DO NOT touch the exposed end.**

**5. ALWAYS** be sure that both the transmitter and receiver are working properly and are within range of each other. Test monitor before first use, periodically and when changing location of the Nursery Unit.

**6. ALWAYS** be sure to immediately check on baby whenever an alarm sounds.

**7. DO NOT** use monitor near water (such as bath tub, sink, etc.).

**8. Keep monitor AWAY** from heat sources (such as stoves, radiators, etc.).

**9. ALWAYS** place both the Nursery Unit and Parent Unit on a flat surface in an upright position and allow for proper ventilation. **DO NOT** place on sofas, cushions, beds, etc. which may block ventilation.

**10.** This monitor uses public airwaves to transmit signals. The Parent Unit may pick up signals or interference from other nursery monitors in your area. Your monitor may even be picked up by other households. To protect your privacy, make sure both units are turned OFF when not in use. If you experience interference, change the channel on both units.

**11.** This product is **NOT** a toy. **DO NOT** allow children to play with it.

**12.** This product contains small parts. Adult assembly required. Exercise care when unpacking and assembling the product and keep small parts away from children.

**13.** When using the monitor, the room temperature should be between 50°F (10°C) and 104°F (40°C).

## ⚠️ BATTERY WARNING

**14.** Use **ONLY AAA RECHARGEABLE** batteries for the Parent Unit. **DO NOT** mix old and new batteries. **DO NOT** mix alkaline, standard or rechargeable batteries. Insert batteries with correct polarity. **DO NOT** short-circuit supply terminals. **ONLY** use the recommended batteries or equivalent (volts and size) and the correct adapter. Remove batteries when product is stored for long periods of time or when batteries are exhausted. Dispose exhausted batteries properly. **DO NOT** recharge non-rechargeable batteries. Rechargeable batteries are **ONLY** to be charged under adult supervision. Keep all



batteries away from children.

## **15. IMPORTANT SAFETY INSTRUCTIONS**

**15.1** Read these instructions - All the safety instructions should be read before the product is operated.

**15.2** Keep these instructions. The safety and operating instructions should be retained for future reference.

**15.3** Heed all warnings - All warnings on the product and in the operating instructions should be adhered to.

**15.4** Follow all instructions - All operating and use instructions should be followed.

**15.5** Water and moisture - DO NOT use this apparatus near water. For example, near a bath tub, wash bowl, kitchen sink, laundry tub, in a wet environment or near a swimming pool and the like. Care should be taken so that objects DO NOT fall onto units and that liquids are not spilled into either unit or Sensor Pad through its openings.

**15.6** Cleaning - Disconnect all units before cleaning. DO NOT immerse in water any part of the Nursery Unit, Parent Unit. Clean only with dry cloth.

**15.7** Ventilation - DO NOT block any ventilation openings. Allow for proper ventilation when units are in use. DO NOT cover the Nursery Unit or Parent Unit with any object such as a blanket. DO NOT place it in a drawer or in any location which would muffle the sound or interfere with the normal flow of air.

**15.8** Heat sources - DO NOT install near any heat sources such as radiators, heat registers, stoves, TVs or other apparatus (including amplifiers) that produce heat. Heat can damage the case or electrical parts.

**15.9** Power cord protection - Protect the Sensor Pad cord and Adapter's power cord from being walked on or pinched by furniture or other items - Power supply cords should be routed so that they are not likely to be walked on or pinched by items upon or against them, paying particular attention to cords and plugs, convenience receptacle, and the point where they exit from the product.

**15.10** Accessories - Only use attachments/accessories specified by the manufacturer. DO NOT place this product on an unstable cart, stand, tripod, bracket or table. The product may fall, causing serious injury to a child or adult and serious damage to the product. Use ONLY with a cart, stand, tripod, bracket or table recommended by the manufacturer or sold with the product. Any mounting of the product should follow the manufacturer's instructions.

**15.11** Unplug this appliance during lightning storms or when not used for long periods of time.

**15.12** Servicing - DO NOT attempt to service this product yourself as opening or removing covers (except battery doors) may expose you to dangerous voltage or other hazards.

**15.13** Replacement parts - When replacement parts are required, be sure the replacement parts specified by the manufacturer have the same characteristic as the original part. Unauthorized substitution may result in fire, electric shock or other hazards.

**15.14** Usage - This baby monitor is intended as an aid. It is NOT a substitute for responsible and proper adult supervision and should not be used as such. Use this appliance ONLY for its intended use as described in this manual.

**15.15** Power Sources - Operate this product only from the type of power source indicated on the type plate of the adaptor. If you are unsure of the type of power supply to your home, consult your dealer or local power company.

**15.16** Overloading - DO NOT overload wall outlets, extension cords or integral convenience receptacles as this can result in a risk of fire or electric shock.

**15.17** Object and Liquid Entry - NEVER push objects of any kind into this product through casing slots as they may touch dangerous voltage points or short out parts that could result in a risk of fire or electric shock. NEVER spill liquid of any kind on the product.

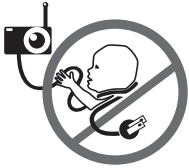
**15.18** Antenna - The antenna used for this transmitter must be installed to provide



a separation distance of at least 20 cm (7.9”) from all persons and must not be collocated or operating in conjunction with any other antenna or transmitter.

**15.19 Power Lines** - An outside antenna system should NOT be located in the vicinity of overhead power lines or other electric light or power circuit, or where it can fall into such power lines or circuits as contact with them may be fatal.

**15.20 WARNING Strangulation Hazard** – Children have STRANGLED in cords. Keep



adapter cords out of the reach of children (more than 1 m away). NEVER use Sensor Pad(s) without the protective cord covering. Check protective cord covering before each

use. Immediately discontinue use of Sensor Pad(s) if protective covering is damaged or broken.

**15.21 Interference** - This monitor uses public airwaves to transmit signals. The Parent Unit may pick up signals or interference from other nursery monitors in your area. Your monitor may even be picked up by other households. To protect your privacy, make sure both units are turned OFF when not in use. If you experience interference, change the channel on both units.

**15.22 Vibration Source** - When the monitor is in use, DO NOT use a crib mobile or other crib accessories that may produce vibrations. Other sources of vibrations may include fans, washing machines, loud music, etc. These sources of vibration may interfere with the performance of your Angelcare® monitor and the alarm will not sound if it continues to detect any movement other than your baby's. Be sure all vibration sources are eliminated before using the monitor.

You may experience false alarms for several reasons. The most common reason is the Nursery Unit has not been turned OFF after you have removed your baby from the crib. Another reason is the Sensor Pad has not been placed under the mattress properly.

Be sure the Sensor Pad is on a flat, firm surface with the printed side facing up.

The sensitivity level may also need to be adjusted. Refer to step 5.1.

**15.23 Sensor Pad** - Your Sensor Pad can be used in any crib that is stationary. If the crib has a spring or slat base, place a hard board between the crib base and the Sensor Pad measuring at least 13” x 13” (33 x 33 cm) and 1/4 inch (6 mm) thick. Only use your Angelcare® monitor in a stationary sleeping environment such as a crib where the Sensor Pad can rest on a completely flat, firm surface.

**15.24** The Sensor Pad is made of plastic and does not permit the air to circulate. Therefore, mildew build up could develop underneath the mattress in the sensor pad area. We suggest rotating the mattress regularly to prevent any mildew.

## **16. IMPORTANT SAFETY INSTRUCTIONS RELATED TO USE OF BATTERIES**

**16.1** Use **ONLY** the type and size of batteries specified in the owner's manual. There is a risk of explosion if batteries are replaced with an incorrect type.

**16.2** Use **ONLY** AAA rechargeable batteries and/or the AC Adapters provided for the Parent Unit. You must use only rechargeable batteries in the Parent Unit. **DO NOT** use alkaline batteries or you will severely damage the unit.

**16.3** Charge the batteries for 15 hours prior to first use. Be sure to have the monitor in the OFF position during this period. **ONLY** use the AC Adapters included with your monitor.

**16.4** **DO NOT** use these adapters with any other equipments.

**16.5** When unplugging the AC Adapter from the Nursery Unit, be sure it is switched to the OFF position. If it isn't, the unit will revert to battery mode if batteries are installed.

**16.6** **DO NOT** use rechargeable batteries in the Nursery Unit. Use alkaline batteries **ONLY**.

**16.7** **DO NOT** dispose batteries in fire. They may explode. Check with local regulations for possible special disposal instructions.

**16.8** Exercise care in handling batteries in order not to short out the batteries with conducting materials such as rings, bracelets and keys. Overcharging, short circuiting, reverse charging, mutilation, or incineration of batteries must be avoided to prevent one or more of the following occurrences: release of toxic materials, release of hydrogen and/or oxygen gas, rise in surface temperature.

**16.9** **DO NOT** attempt to recharge batteries provided with or identified for use with this product that are not intended to be charged. The batteries may leak corrosive electrolyte or explode.

**16.10** **DO NOT** attempt to rejuvenate the batteries provided with or identified for use with this product by heating them. Sudden release of battery electrolyte may occur, causing burns or irritation to eyes or skin.

**16.11** If and when necessary, the batteries must be replaced with identical new ones or equivalent (volts and size). If a battery to be replaced is connected with other batteries in series, replace the other batteries at the same time as well. **DO NOT** mix old and new batteries.

**16.12** Reverse polarity installation of the batteries in the end product must be avoided. Reverse insertion of batteries can cause charging, and that may result in leakage or explosion.

**16.13** Remove batteries from this product if you store the product over 30 days because the batteries could leak and damage the product.

**16.14** Discard 'dead' batteries as soon as possible since 'dead' batteries are more likely to leak in a product. If a battery has leaked or vented, it should be replaced immediately using protective gloves.

**16.15** **DO NOT** store this product, or the batteries provided with or identified for use with this product, in high-temperature areas.

# **FCC WARNING**

## **(North America Only)**

**17.1** Modifications not authorized by the manufacturer may void users authority to operate this device.

**17.2 NOTE:** This equipment has been tested and found to comply with part 15 of the FCC Rules and the Industry Canada licence-exempt RSS standard(s). These limits are designed to provide reasonable protection against harmful interference in a residential installation. This equipment generates, uses and can radiate radio frequency energy and, if not installed and used in accordance with the instructions, may cause harmful interference to radio communications.

**17.3** However, there is no guarantee that interference will not occur in a particular installation. If this equipment does cause harmful interference to radio or television reception, which can be determined by turning the equipment OFF and ON, the user is encouraged to try to correct the interference by one or more of the following measures:

- Reorient or relocate the receiving antenna.
- Increase the separation between the equipment and receiver.
- Connect the equipment into an outlet on a circuit different from that to which the receiver is connected.
- Consult the dealer or an experienced radio/TV technician for help.

**17.4** This device complies with the part 15 of the FCC Rules and the Industry Canada licence - exempt RSS standards(s). Operation is subject to the following two conditions:

**(1)** This device may not cause harmful interference, and

**(2)** This device must accept any interference received, including interference that may cause undesired operation.

## **FCC AND IC REGULATIONS**

### **RF radiation exposure statement**

The Nursery Unit complies with FCC RF radiation exposure limits set forth for an uncontrolled environment. **Caution:** To maintain the compliance with the FCC's RF exposure guideline, install the Nursery Unit at least 20 cm from ALL persons. The transmitter of this device must not be co-located or operating in conjunction with any other antenna or transmitter.

### **Industry Canada**

This product meets the applicable Industry Canada technical specifications. CAN ICES-3 (B)/NMB-3 (B)

# SETUP REQUIREMENTS

VIDEO, MOVEMENT  
& SOUND MONITOR

Model AC1100

## INCLUDED:



Rechargeable Parent Unit



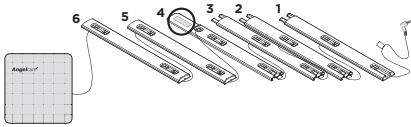
Nursery Unit



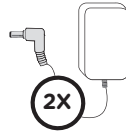
Charging Cradle



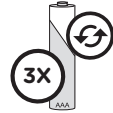
Belt Clip



1 Sensor Pad (AC1100) or 2 Sensor Pads (AC1100-2SP) with pre-installed cord covers



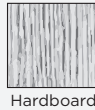
2 AC Adapters



3 Rechargeable AAA Batteries

## YOU MUST PREPARE:

One hardboard (not included)  
Thickness: **6 mm**  
Minimum dimensions:  
**33 cm x 33 cm**  
Maximum dimensions:  
equal to the mattress size



Hardboard

## WHAT YOU WILL NEED (NOT INCLUDED):



3 AAA Alkaline Batteries



Miniature Philips Screwdriver

### IMPORTANT

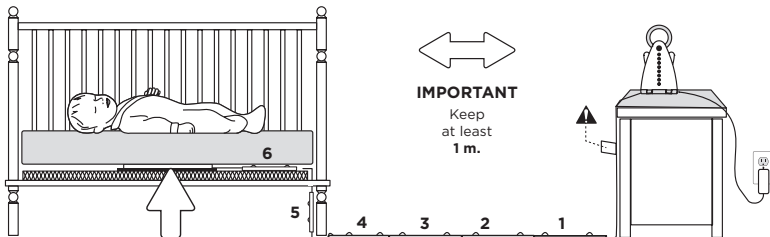
The hardboard must be larger than the Sensor Pad surface area.

## BABY'S ROOM:

### IMPORTANT

Place the crib near a supporting wall and far from air currents. Install the Nursery Unit on a flat, stable surface facing the crib at a distance of at least **1 meter**.

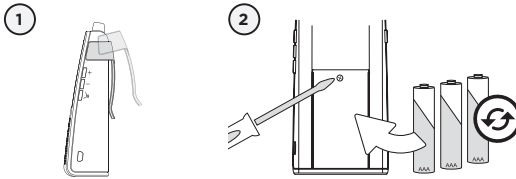
Make sure to plug the adapter to the socket outlet nearest to the equipment and that it is easily accessible.



### IMPORTANT

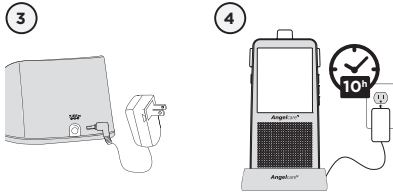
Keep at least 1 m.

## STEP 1 - CHARGING THE PARENT UNIT



### IMPORTANT

Never use regular alkaline batteries in the Parent Unit; they may explode.

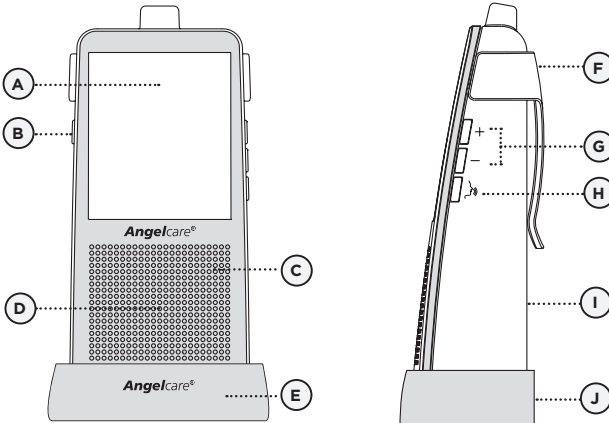


- 1) Remove the Belt Clip.
- 2) Remove the battery door and insert the Rechargeable Batteries (included).
- 3) Connect the AC Adapter to the Charging Cradle and into an electrical outlet.
- 4) Charge the unit for **10 continuous hours** (prior to first use).

### NOTE:


To optimize your battery performance please refer to Battery Guidelines in the Trouble Shooting section.

### PARENT UNIT:

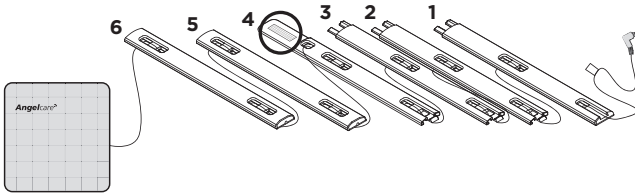


Front Side

Left Side

- A) LCD Touchscreen
- B) **POWER ON/OFF** 
- C) Microphone
- D) Speaker
- E) Charging Cradle
- F) Belt Clip
- G) Speaker Volume Buttons
- H) Talk Back Button
- I) Battery Door
- J) AC Adapter Outlet (not shown)

## STEP 2 - INSTALLING THE SENSOR PAD



Sensor Pad with pre-installed cord covers

**Cord covers 1, 2, 3, 4:**  
Position on floor

**Cord cover 4:**  
Contains double sided tape to securely install beneath crib leg

**Cord cover 5:**  
Position vertically between mattress support and floor

**Cord cover 6:**  
Place under the mattress

## ⚠ WARNING

### STRANGULATION HAZARD.

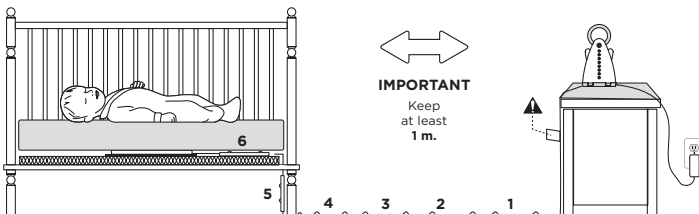
Children have STRANGLED in cords:

- Keep adapter cords out of the reach of children (more than 1 m away).
- Because of the serious strangulation risk to infants and toddlers, parents and caregivers should never place the Nursery Unit within 1 meter of a crib.
- **NEVER** use Sensor Pad without the cord covers. Check cord covers before each use to ensure it is securely placed under the leg of the crib. Discontinue use of Sensor Pad if any cord covers are damaged or broken.
- **NEVER** use extension cords with AC adapters. **ONLY** use the AC adapters provided. This product is not a toy. Never allow children to play with it.



### 2.1 - SELECT A LOCATION FOR THE NURSERY UNIT

Select a location for the Nursery Unit that is at least **1 meter away from the crib.**



## 2.2 - SELECT THE CRIB LEG YOU WILL BE USING TO SECURE THE CORD COVERS

---

### RECOMMENDED

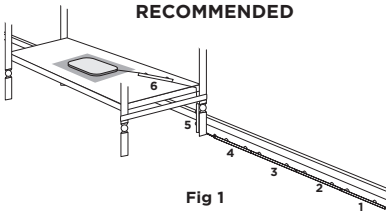


Fig 1

OR

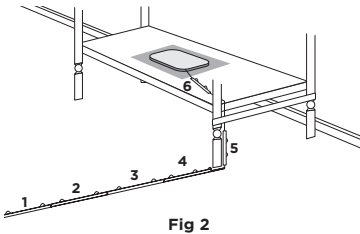
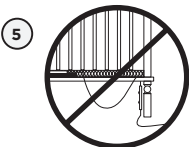
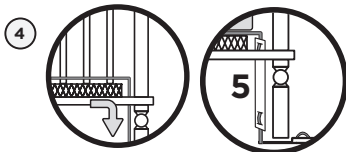
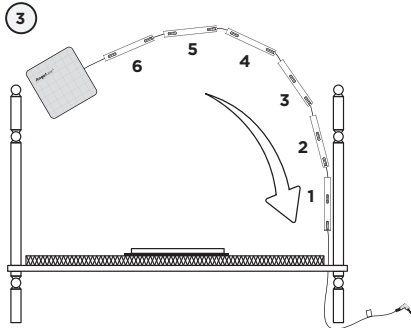


Fig 2

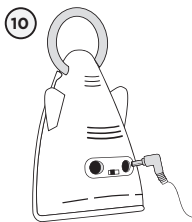
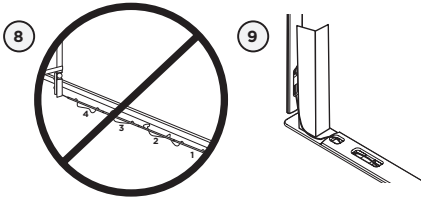
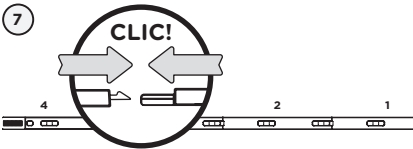
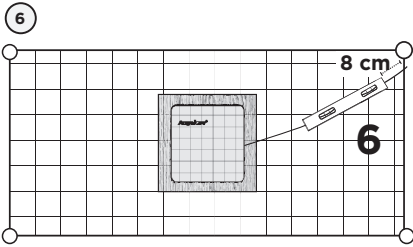
- 1) Use the crib leg by the wall closest to the Nursery Unit (**fig 1**). In cases where the Nursery Unit is across the room, use the leg closest to the Nursery Unit to position the covered wire (**fig 2**). It is always preferable that the covered cord run along a wall.

## 2.3 - INSTALL THE SENSOR PAD ON THE MATTRESS SUPPORT

---



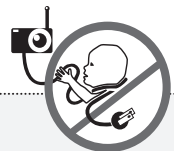
- 1) Remove the mattress from the crib.
- 2) Place the Sensor Pad - printed side up - on top of the **hardboard** at the center of the crib.
- 3) Run the connection pin, warning label and the first 5 cord covers down along the backside of the crib leg, **between the mattress support and the inside edge of the crib**.
- 4) Bring the first 4 cord covers down the floor, and keep the 5<sup>th</sup> cord cover vertically, along the backside of the crib leg, (**between the mattress and the inside edge of the crib**).
- 5) Remove any cord slack to make sure no parts of the cord are loose.



- 6) Place the 6<sup>th</sup> cord cover approximately 8 cm from the edge of the mattress support.
- 7) Snap together the remaining cord covers that will run along the floor.
- 8) Remove any cord slack to make sure no parts of the cord are loose.
- 9) Peel off the double-sided tape on the 4<sup>th</sup> cord cover and place it securely under the crib leg.
- 10) Install the Nursery Unit on a flat, stable surface facing the crib at a distance of at least 1 m and plug the Sensor Pad cord into the Nursery Unit.
- 11) Check to make sure the Sensor Pad has not moved from position.
- 12) Place the mattress back inside the crib.

• The Sensor Pad functions with any size and type of mattress except memory-foam mattresses and hollow frame mattresses.

• The hardboard maintains a constant pressure on the Sensor Pad, enabling it to detect the baby's movements even when the baby is at the edges of the crib.



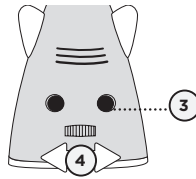
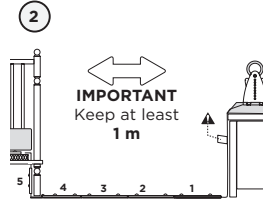
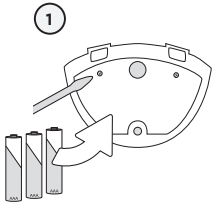
## **⚠ WARNING** **STRANGULATION HAZARD**

- Remove all slack from Sensor Pad Cord.
- When lowering the mattress support as your child grows, slide the vertical Cord Cover (5) upward so it remains approximately in the center between the mattress support and the floor. Slide the Sensor Pad Cord through the Floor Cover to eliminate any additional slack.

- The Sensor Pad is not designed for use with adults, children or infants older than 24 months.
- Discontinue use of the Sensor Pad when child is older than 24 months. Remove sensor pad from crib and store for future use.
- **BEFORE FIRST TIME USE:** To test that the unit is ready for use, refer to instruction manual on how to test that the installation has been done



### STEP 3 - SETTING UP THE NURSERY UNIT

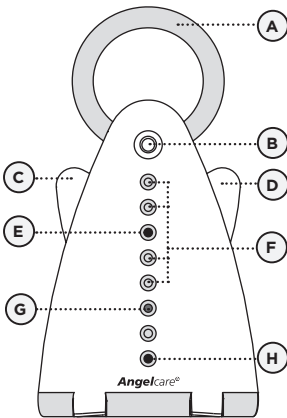


- 1) Remove the battery door and insert 3 AAA Alkaline Batteries (not included).
- 2) Place the Nursery Unit at a **minimum of 1 m** away from the crib.
- 3) Connect the AC Adapter to the Nursery Unit and into an electrical outlet.
- 4) Direct the angle of the camera toward the crib using the rotating dial.

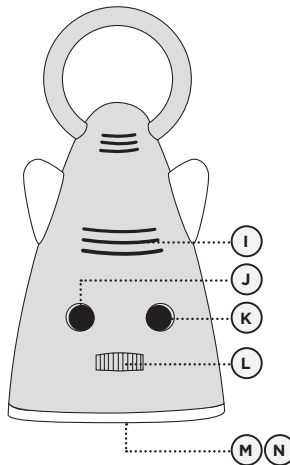
**NOTE:**

The batteries maintain power supply in case of power outage.

**NURSERY UNIT:**



Front Side

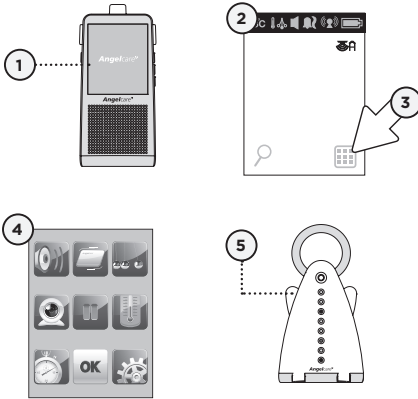


Back Side

- A) Night Light
- B) Main Button
- C) **POWER ON/OFF** (Left 'Wing')
- D) Night Light ON/OFF (Right 'Wing')
- E) Video Camera
- F) 4 Infrared LEDs (Night Vision Camera)
- G) Power Indicator (green)  
Low Battery Indicator (red)
- H) Microphone
- I) Speaker
- J) Sensor Pad Outlet
- K) AC Adapter Outlet
- L) Rotating Dial for Camera Angle
- M) Battery Door (not shown)
- N) Tripod Outlet\* (not shown)

\* Nursery Unit may be installed on a tripod (not included).

## STEP 4 - TURNING ON YOUR MONITOR



- 1) Press the Parent Unit **ON/OFF** button for 2 seconds until blue screen appears.
- 2) The Parent Unit will display Video mode screen.
- 3) Press the **Menu** icon to access main menu.
- 4) The Parent Unit will display Menu mode.
- 5) Push and hold the Nursery Unit **left 'wing'** button for 2 seconds.



When Parent Unit is turned ON and Nursery Unit is OFF, Parent Unit will display Disconnected Mode and will turn itself OFF after 60 seconds.



If there is a lost connection between the 2 units (refer to troubleshooting):

- The Out-of-Range icon will appear on the screen.
- The Lost Connection icon will appear on the indicator bar.

## INDICATION BAR IMPORTANT ICONS



**23°C Temperature icon:** Indicates room temperature



**Temperature Alarm icon:** Indicates Temperature Alarm is active



**Pendulum icon:** Indicates the Motion Sensor is active



**Sound icon:** Indicates that Sound function is active

**Alarm icon:** Indicates selected alarm mode



Sound alarm



Sound alarm and vibration



Vibration only

**Connection icon:** Indicates the connection quality between the Parent Unit and Nursery Unit.



Good connection



Poor connection



Lost connection



Out-of-Range

**Battery Level icon:** Indicates battery level



Empty



1/3 Full



2/3 Full



Full

## STEP 5 - TESTING AND GETTING TO KNOW YOUR MONITOR

The Angelcare® monitor can be used with the pre-program factory settings or you can also customise your settings to your preference.



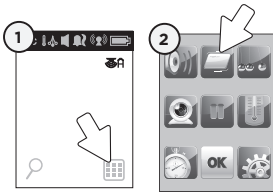
..... All changes and adjustments made in the main menu and sub-menus will not be activated unless you confirm them by pressing the **OK** icon.

### IMPORTANT

When in menu or sub-menu modes, sound transmission between Parent and Nursery Units will be temporarily deactivated. ONLY movement-detection alarm will remain active (if function is activated).

### 5.1 - SENSOR PAD

#### TO ACTIVATE THE SENSOR PAD:

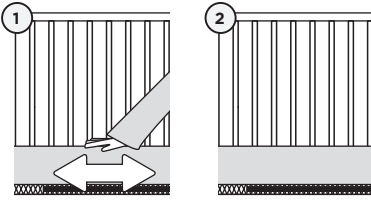


- 1) Press **Menu** icon to access main menu.
- 2) Press **Movement** icon to **activate** or **deactivate** Movement Alarm.




- 3) Press **OK** icon to confirm.

#### TO TEST THE SENSOR PAD:



- 1) Move your hand lightly on the mattress.

.....  The pendulum icon will appear on Parent Unit indicator bar. It will move as you move your hand and trigger a 'TIC' sound.

- 2) Remove your hand from the mattress. After 15 seconds you will hear a 'TIC' pre-alarm sound, and 5 seconds later the Movement Alarm will trigger.



### MOTION ALARM

- Alarm activates when no movement is detected by Sensor Pad for 20 seconds.
- Both the Parent Unit and Nursery Unit speakers will emit loud warning sound.
- Motion Alarm icon will show on the LCD screen.

#### IF THE ALARM DOES NOT SOUND

- Avoid contact with crib while Sensor Pad is in operation.
- Place crib near a supporting wall.
- Turn OFF crib mobile, fans, loud music or anything else that may cause vibration.
- Adjust Sensor Pad sensitivity level.

## TO STOP THE ALARM

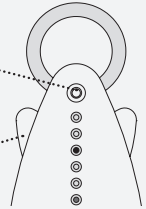


Press the Parent Unit Motion Alarm icon

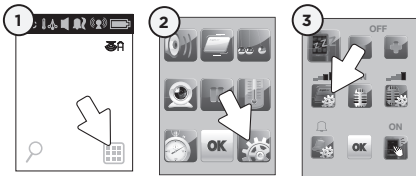
OR

Press the Nursery Unit's Main button

Hold down left 'wing' button for two seconds to turn OFF the Unit



## TO ADJUST THE SENSOR PAD SENSITIVITY LEVEL:



### NOTE:

If you are receiving false alarms, adjust the sensitivity level.

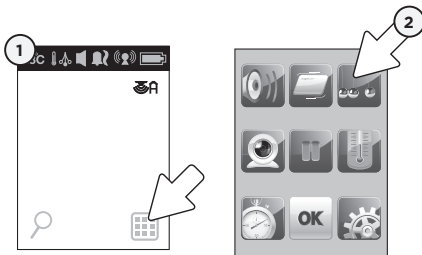
- 1) Press **Menu** icon to access main menu.
- 2) Press **settings** icon to access sub-menu.
- 3) Press **movement sensitivity** icon to choose the desired sensitivity level (1 to 5).



- 4) Press **OK** icon to confirm.

## TO ACTIVATE THE TIC FUNCTION:

Allows you to hear a TIC sound when Sensor Pad function is activated.



- 1) Press **Menu** icon to access the main menu.
- 2) Press **TIC** icon to **activate** or **deactivate** the tic function.



- 3) Press **OK** icon to confirm.

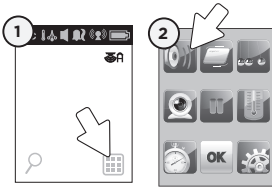
Regular TIC sound will emit from Parent Unit and a moving pendulum will appear on Parent Unit indicator bar

## IMPORTANT

- The Sensor Pad is not designed for use with adults, children or infants older than 24 months.
- Once you are finished using the Sensor Pad, please remove it from the baby's crib and store it away.

## 5.2 - SOUND

### TO ACTIVATE SOUND:



### TO TEST SOUND:

Ask someone to speak into the Nursery Unit or place the unit near a radio to ensure that sound is being picked up.

#### IMPORTANT

To avoid feedback (whistling), keep both units at least 3 m apart.

- 1) Press **Menu** icon to access main menu.
- 2) Press **sound** icon to **activate** or **deactivate** sound.

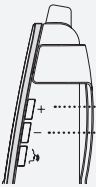


- 3) Press **OK** icon to confirm.

### IF YOU HEAR NO SOUND:

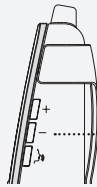
- Check that both units are powered on.
- Check that both units are plugged into functioning electrical outlets.
- Check the batteries in both units (replace or recharge them if necessary).
- Bring Parent Unit closer to Nursery Unit.

### ADJUST SOUND LEVEL



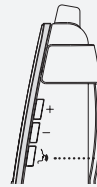
Raise volume (+)  
Lower volume (-)

### PUT IN SILENT/MUTE MODE



Press the (-) button for 2 seconds to mute sound.

### PUT IN DIALOGUE MODE



Press and hold talk button to speak to baby.

## 5.3 - BATTERIES

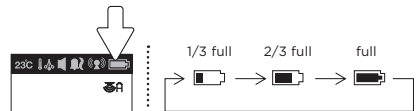
### HOW TO CHECK THE BATTERIES:

Unplug the Adapters from both units.

- If the green light on the Nursery Unit does not show, replace the batteries.
- If the Parent Unit and its screen do not light up, recharge the batteries.

### HOW TO CHARGE THE BATTERIES IN THE PARENT UNIT:

Leave the Parent Unit in the Charging Cradle to fully charge the unit. Although the batteries at 1/3 capacity works normally, we recommend that you fully recharge them.



#### PARENT UNIT BATTERY ALARM

- Alarm activates when the batteries need to be recharged.
- Parent Unit will emit a beep sound every 15 seconds.
- Battery Alarm icon will show on LCD screen.

# YOU ARE NOW READY TO USE YOUR MONITOR

The Angelcare® monitor can be used with the pre-program factory settings or you can also customise your settings to your preference.

## DEFAULT SETTINGS



**Continuous Sound:** ON  
**Speaker Volume:** Level 3 (of 6)



**Movement Mode:** ON  
**Sensor Pad Sensitivity:** Level 3 (of 5)  
**TIC:** OFF



**Temperature Alarm:** OFF  
**Temperature Alarm Settings:**  
High Temperature Limit: 32°  
Low Temperature Limit: 5°



**VOX Mode:** OFF



**Alarm Mode:** Sound alarm only



**Video Camera:** ON



### IMPORTANT

- Test your monitor before first use.
- Test your monitor regularly to ensure it is functioning correctly.
- Test your monitor every time you move the Sensor Pad to a different place.

## STEP 6 - ACTIVATING AND DEACTIVATING ADDITIONAL FUNCTIONS



All changes and adjustments made in the main menu and sub-menus will not be activated unless you confirm them by pressing the **OK** icon.

### IMPORTANT

When in the menu or sub-menu modes, sound transmission between Parent and Nursery Units will be temporarily deactivated. **ONLY** the motion-detection alarm will remain active (if function is activated).

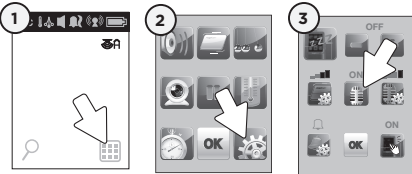
### 6.1 - VOICE ACTIVATION (VOX) OR CONTINUOUS SOUND MODE

Allows you to select your option on how you monitor sound:

**VOX** (voice activation picks up sound based on the setting of the sensitivity level) or

**Continuous** (sound monitoring is continuously on, picking up all sounds).

#### TO ACTIVATE VOX MODE:



- 1) Press **Menu** icon to access the main menu.
- 2) Press **settings** icon to access sub-menu.
- 3) Press **the VOX** icon to **activate** or **deactivate** the VOX function.

#### NOTE:

By deactivating VOX the Continuous setting is ON.

- 4) Press **OK** to confirm.



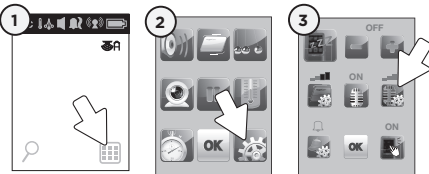
VOX ON  
(VOX)



VOX OFF  
(Continuous)

#### TO ADJUST THE VOX SENSITIVITY:

Allows you to determine the sound level needed to trigger sound transmission to the Parent Unit.

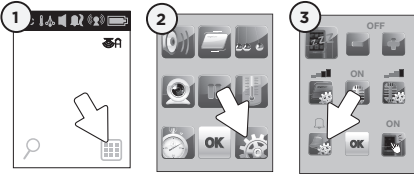


- 1) Press **Menu** icon to access the main menu.
- 2) Press **settings** icon to access sub-menu.
- 3) Press **VOX** icon sensitivity to choose sound sensitivity level (1 to 4).
- 4) Press **OK** to confirm.



## 6.2 - ALARM

Allows you to select your preferred alarm mode for the Parent Unit.



- 1) Press the **Menu** icon to access main menu.
- 2) Press the **settings** icon to access sub-menu.
- 3) Press the **Alarm** icon to change the alarm mode.
- 4) Press **OK** to confirm.



Sound alarm only



Sound alarm and vibration



Vibration only (the alarm will not sound on Parent Unit but it will on Nursery Unit).



Alarm Mode icon shows in the top bar of the Parent Unit.

Sound alarm will replace vibration mode when the Parent Unit is in its Charging Cradle.

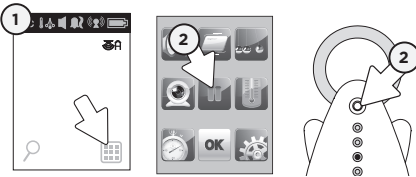
When the battery capacity is low, the vibration will be temporary deactivated. It will reactivate when the battery is fully recharged.

### IMPORTANT

When in setting mode no sound or alarms will transmit to the Parent Unit, except the movement alarm (if this function was already activated).

## 6.3 - HOLD

Allows you to put your Angelcare Monitor on HOLD.



- 1) Press the **Menu** icon to access main menu.
- 2) Press the **Hold** icon  
**OR**  
Press and hold the **Nursery Unit Main button** for at least 2 seconds.
- 3) **Hold** icon will appear on the screen.
- 4) Press the **Hold** icon or **Nursery Unit Main button** again to return to normal operation.



Nursery Unit Night Light will blink. Parent Unit will emit 3 consecutive beeps every 30 seconds to remind you that monitor is on hold.

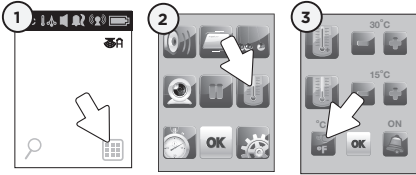
### IMPORTANT

When your monitor is on hold, the motion-detection feature and motion alarm are disabled.



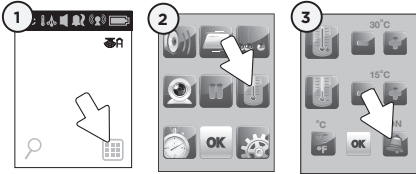
## 6.4 - THERMOMETER

### TO CHANGE THE MEASUREMENT UNIT:




- 1) Press the **Menu** icon to access main menu.
- 2) Press the **temperature** icon to access sub-menu.
- 3) Press the **°C °F** icon to change from **Celsius to Fahrenheit**.
- 4) Press **OK** to confirm.

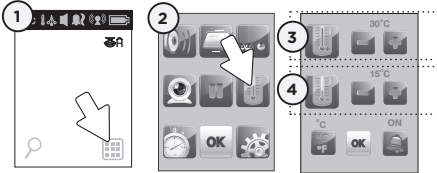
### TO ACTIVATE THE TEMPERATURE ALARM:



- 1) Press the **Menu** icon to access main menu.
- 2) Press the **temperature** icon to access sub-menu.
- 3) Press the **Temperature Alarm** icon to **activate** or **deactivate** temperature alarm.
- 4) Press **OK** icon to confirm.

 **Temperature Alarm icon:**  
Indicates temperature alarm is active.

### TO SET THE TEMPERATURE RANGE:



The range between the minimum and maximum temperature must be at least 4 °C/7 °F. An error tone will be heard if you try to set it up below this minimum level.

- 1) Press the **Menu** icon to access main menu.
- 2) Press the **temperature** icon to access sub-menu.
- 3) Press (+ or -) to set **maximum** temperature range (15 to 32 °Celsius /59 to 90 °Fahrenheit).
- 4) Press (+ or -) to set **minimum** temperature range (5 to 20 °Celsius /41 to 68 °Fahrenheit).
- 5) Press **OK** icon to confirm.

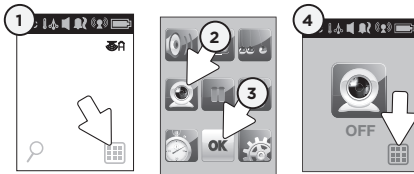


#### TEMPERATURE ALARM

- Alarm activates when temperature reaches maximum or minimum set temperature.
- Parent Unit will emit 4 consecutive beeps, every 5 seconds.
- Temperature Alarm icon will show on LCD screen.

## 6.5 - VIDEO

Allows you to turn video function ON or OFF.

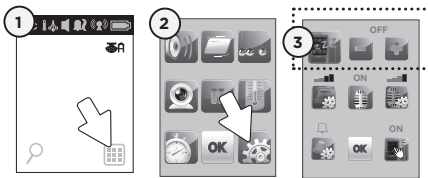


- 1) Press the **Menu** icon to access main menu.
- 2) Press the **Video** icon to **activate** or **deactivate** the video function.
- 3) Press **OK** to confirm.
- 4) Press the **Menu** icon to return to main menu.



## 6.6 - SCREEN SAVER

Allows you to set the screen saver starting point.



- 1) Press the **Menu** icon to access main menu.
- 2) Press **settings** icon to access sub-menu.
- 3) Press the **Screen Saver** icon to select the delay before video mode turn into screen saver mode.
- 4) Press **OK** to confirm.



### NOTE:

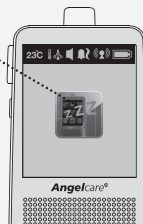
Screen Saver icon will appear when video is in Screen Saver mode.

### MANUAL SETTING:

To trigger manually the screen saver mode push the Parent Unit **Power button**. Do not push it for more than 2 seconds since this will shut down the Parent Unit.

### TO REVERT BACK TO CAMERA CAPTION

Press the screen




## 6.7 - INFRARED NIGHT VISION

Allows you to capture image when lighting is insufficient.

### TO ACTIVATE NIGHT VISION:

Press the **Night Vision** icon to chose available modes:



 The Moon icon will appear when the infrared LEDs are ON.



**AUTO:** The infrared LEDs will turn on automatically when the lighting is not sufficient. The image transition takes 20 seconds



**ON:** The infrared LEDs are ON at all times.



**OFF:** The infrared LEDs are OFF at all times.

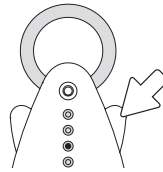
There are 4 built-in infrared LEDs on the Nursery Unit to enable clear black and white image. The image transition takes 20 seconds.

## 6.8 - NIGHT LIGHT

Allows you to use your monitor as a night light.

### TO ACTIVATE THE LIGHT:

Push **right 'wing'** of Nursery Unit to the night light ON or OFF.



## 6.9 - PAGER

Allows you to locate the Parent Unit.

### TO LOCATE PARENT UNIT:

Press Nursery Unit main button for less than 2 seconds. The Parent Unit will emit a paging sound for one minute.



### IMPORTANT

If you press the Main Button for more than 2 seconds, you will put the movement monitoring on Hold. To Unhold, push the button again.

### TO STOP THE PAGING SOUND:



Press the Parent Unit screen

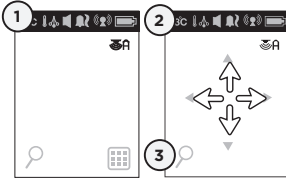
OR

Press the Nursery Unit's main button



## 6.10 - ZOOM MODE

Allows you to zoom in to twice the normal view.



- 1) Press the **zoom** icon.
- 2) Press the **directional arrows** to zoom in on what you want to see more closely.
- 3) Press the **zoom** icon again to return to normal view.

## 6.11 - MUTE

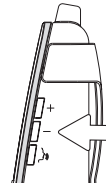
Allows you to put your monitor in Silent/Mute mode

### TO PUT ON MUTE:

Press the (-) button and hold for 2 seconds to mute sound.

### TO UNMUTE:

Press the (-) button again and hold for 2 seconds to unmute sound.

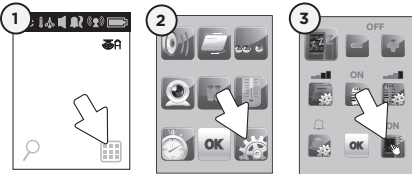


### NOTE:

On the Parent Unit, the Mute ICON will blink.

## 6.12 - KEY TONE

Allows you to activated or deactivate key tone sound.

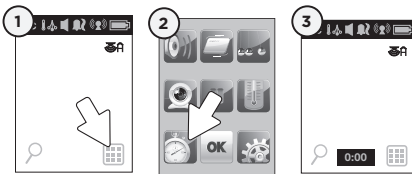


- 1) Press the **Menu** icon to access main menu.
- 2) Press the **settings** icon to access sub-menu.
- 3) Press icon to **activate** or **deactivate** key tone sound.
- 4) Press **OK** icon to confirm.



## 6.13 - TIMER

Attain activities.



- 1) Press **Menu** icon to access main menu.
- 2) Press **Timer** icon to start or stop the timer.
- 3) View **Timer** in video mode. (shows in minutes only).
  - Stops automatically after 5 hrs 59 min.
  - Stops automatically if the Parent Unit is turned OFF.



## TROUBLESHOOTING

### TAKING CARE OF YOUR RECHARGEABLE BATTERIES

---

- Ensure that you fully charge your batteries for 10 hrs before their first use.
- To maintain maximum battery life it is recommended that you fully discharge your batteries periodically. Battery performance can be diminished by leaving the batteries constantly charging on the charging cradle. If your Parent Unit is no in use, please turn it off.
- Inadequate battery power can impair the performance of your monitor. If you are not happy with the performance of your Parent Unit/Monitor, please replace the rechargeable batteries (3 x NIMH Rechargeable batteries).
- It is advisable to change the batteries every 6 months.

### FALSE ALARMS

---

- Turn OFF the Nursery Unit.
- Verify the connection between Sensor Pad and Nursery Unit. Unplug and reconnect the cord.
- Make sure there is no bedding between mattress and Sensor Pad.
- If the crib has a spring or slat base, place a hardboard between the crib base and the Sensor Pad measuring at least 33 x 33 cm and 6 mm thick.
- Make sure Sensor Pad is positioned as described under the setup requirements. Sensitivity may need to be adjusted, refer to step 5.1.

### ALARM WILL NOT SOUND

---

- Avoid contact with the crib when the monitor is ON.
- Place crib near a solid supporting wall to avoid Sensor Pad from detecting movement from outside the crib.
- You may need to decrease the sensitivity, refer to step 5.1.

### NO SOUND IS BEING TRANSMITTED

---

- Bring Parent Unit closer to Nursery Unit.
- Check/replace batteries or recharge Parent Unit.
- Check connections or change to another electrical outlet.
- Ensure both units are ON.
- Ensure mains supply units are activated.
- Check on the top bar of the Parent Unit to see if the Monitor is on "MUTE" instead of "ON". Refer to step 6.11.

### NURSERY UNIT POWER ON INDICATOR (GREEN LIGHT) DOES NOT LIGHT UP

---

- Check connections or change to another electrical outlet.
- Push and hold the left 'wing' for 2 seconds to turn the Nursery Unit ON.

### WEAK RECEPTION

---

- Bring units closer together.
- Change the position of one or both units.
- Place units on a flat surface away from baby's reach.
- Replace the batteries or recharge Parent Unit.

**STATIC, DISTORTION, INTERFERENCES  
(FROM OTHER MONITORS, WIRELESS PHONES, WALKIE-TALKIES, ETC...)**

---

- Rotate Parent Unit or move it away from source of interference.

**FEEDBACK (LOUD NOISES EMITTED FROM THE PARENT UNIT)**

---

- Move units farther apart (at least 3 meters).
- Decrease volume on Parent Unit.

**THE PARENT UNIT SCREEN IS BLACK (PARENT UNIT IS OFF)**

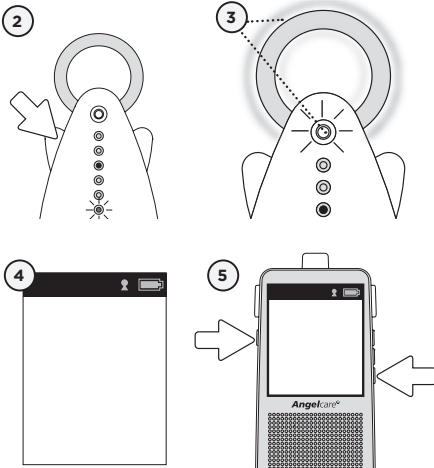
---

- Turn the Parent Unit back ON by pushing and holding the power button (left 'wing') for 2 seconds.
- Replace the batteries or recharge Parent Unit.

**LOSS OF CONNECTIVITY**

---

In the case of loss connectivity, the first step is to bring the Parent Unit and the Nursery Unit closer together and make sure that both units are ON to restore the connection. If there is still no connection and no out of range warning after the above has been done, then and only then should the re-connection procedure below be done.



**Re-Connection procedure:**

- 1) Make sure both the Nursery Unit and the Parent Unit are OFF.
- 2) Turn ON the Nursery Unit by pressing the left wing.  
..... The power light will turn on.
- 3) Press and release the left wing 4 times until the Angel eye light and night light blinks.
- 4) Turn ON the Parent Unit until the screen displays.
- 5) Press and hold the Parent Unit Talk button and then press and release the Power button.

..... The Parent Unit screen should then show the video display - this would mean that the units are now connected.

**NOTE:**  
..... By doing the re-connection procedure you will reset the monitoring system back to original presets.

## LIMITED WARRANTY

Angelcare® warrants to the original owner of this product that Angelcare® rechargeable video, movement and sound monitor (model AC1100) is free from any material and workmanship defects, for a period of one (1) year from the date of the original purchase. If this monitoring system fails to function properly when used as directed under normal conditions within the two year period, Angelcare® will either repair or replace the product, at our discretion, free of charge. Please contact your distributor.

The product must be accompanied by a proof of purchase, either a bill of sale or other proof that the monitoring system is within the warranty period. Angelcare® will bear the cost of repairing or replacing the product and shipping it back to you.

**This warranty does not apply to a product which has been damaged as a result of improper maintenance, an accident, improper voltage supply or any other form of misuse. The warranty is also void if the owner repairs or modifies the product in any way. Angelcare® is not liable for any incidental or consequential damages with regard to this product. The warranty also excludes any liability other than what is stated above. No other warranty is given.**

This warranty does not cover products and accessories which are not Angelcare-branded, or any problems that result from usage that is not in accordance with product instructions, failure to follow the product instructions, or problems caused by using accessories, parts or components not supplied by Angelcare.

LEGAL RIGHTS VARY FROM COUNTRY TO COUNTRY. SOME COUNTRIES DO NOT ALLOW THE EXCLUSION OR LIMITATION OF INCIDENTAL OR CONSEQUENTIAL DAMAGES, SO THE ABOVE LIMITATIONS MAY NOT APPLY TO YOU.

WE ARE NOT IN ANY WAY RESPONSIBLE FOR ANY OUTCOME RESULTING FROM THE USE OF THIS PRODUCT.

## IMPORTANT!

This Angelcare® monitor is a personal care product. Please do not return this product to the store. If you have questions or need help, please call your distributor before returning this product.

## TECHNICAL SPECIFICATIONS

### Range:

Open field (Open area without obstructions): up to 200 meters.

### Number of Channels:

USA/Canada: 19 channels.  
Europe: 64 Channels.

### Power Supply:

Three AAA alkaline batteries (not included) or 7.5V DC Adapter for Nursery Unit.

Three AAA rechargeable batteries and 7.5V DC adapter for Charging Base for the Parent Unit.

**Caution:** To reduce the risk of electric shock, do not expose this product to rain or moisture.

Danger of explosion if batteries are incorrectly replaced. The included Batteries are 3 AAA NIMH rechargeable batteries, manufactured by GPI INTERNATIONAL LIMITED (GN60AAAHC, 1.2V 600mAh) or by HIGHPOWER TECHNOLOGY CO., LTD (HFR-44AAAJ600, 1.2V 600mAh).

**They may only be replaced by 3 AAA NIMH rechargeable batteries.**

### Batteries:

- DO NOT mix old and new batteries.
- DO NOT mix alkaline standard (carbon-zinc), or rechargeable (NI-CD, NIMH, etc) batteries.

### Transmission:

Data transmission between the Parent Unit and Nursery Unit is made on the 2.4GHz frequency.

Hereby, Angelcare Monitors Inc, declares this baby monitor is in compliance with the essential requirements and other relevant provisions of Directive 1999/5/EC.

The EU declaration of conformity can be obtained at: [www.angelcarebaby.com](http://www.angelcarebaby.com)



## PROTECT THE ENVIRONMENT

This electronic equipment contains reusable material and must not be disposed with domestic waste. Please take it to a collecting point for electric and electronic equipment (ask your local authorities for details).

## ErP COMPLIANCE

SOUTH AFRICA-BRAZIL-ECUADOR-EUROPEAN UNION  
Use only Angelcare® Brand power supply-model number T07505V001

GERMANY  
Use only Angelcare® Brand power supply-model number T07505F002

AUSTRALIA  
Use only Angelcare® brand power supply-model number T07505S002

NORTH AMERICA  
Use only Angelcare® brand power supply-model number T07505U002



## Also available at Megababy...

### Nappy Disposal System

The Angelcare Nappy Disposal System is a convenient and hygienic way of disposing of dirty nappies. Featuring Air-Seal technology designed to keep bad smells at bay, this simple-to-use system makes for a happier, more fragrant home. It also makes a fantastic family bathroom bin when the nappy days are over.

including free first cassette!



#### HYGIENIC PUSH & LOCK

Simply push nappy in to lock smells in



#### AIR SEAL

The advanced multi-layer film provides an effective odour barrier



#### 100% COMPATIBILITY

All Angelcare cassettes are suitable for all Angelcare Nappy Disposal Systems



#### EASY-TO-USE REFILL

Each (refill) cassette includes enough bags to last 1 month



#### ENVIRONMENTALLY FRIENDLIER

Uses up to 4 times less plastic than other systems



#### ONE-HANDED OPERATION

No difficult twisting required to use



#### SAFE AND SIMPLE

The cutting mechanism is inside the nappy bin



#### EASY TO EMPTY

Remove it just like a normal bin liner (approximately once a week)

For latest prices on all Angelcare products visit:  
**megababy.co.uk**



### Refill Cassettes

The Angelcare refill cassettes help to provide a convenient and hygienic way of disposing of dirty nappies. A pack of 3 refill cassettes is normally enough for up to 3 months of usage.

Buy Refill Cassettes online at  
**www.megababy.co.uk**





## Also available at Megababy...

### Angelcare Soft-Touch Bath Support

The Soft-Touch Bath Support provides optimal comfort and safety for your baby as it is placed directly in the bath. Its unique design combines safe, sturdy sides and an angled area made from special soft material for your baby.

The soft TPE material does not only mould comfortably around your baby, but also takes up the bath water's temperature very quickly, which makes your baby feel warm and safe. Suitable from birth.

**PLEASE NEVER LEAVE YOUR CHILD UNATTENDED WHILE BATHING.**

RSP £24.99

soft material absorbs water temperature



#### DURABLE & LIGHTWEIGHT

Bath Support has a layer of soft TPE material, which warms very quickly to baby's body temperature and bath water.



#### HYGIENIC & MOULD-RESISTANT

The mesh material allows water to drain easily from the bath support and dry quickly.



#### USED DIRECTLY IN THE BATH

The perfect height for easy and comfortable bathing. The water level indicator on the bath support and the non-slip rubber base provides optimal safety.



#### EASY TO STORE

This baby bath support has two carry handles and a handy loop at top so that you can hang it up for convenient storage.



#### ERGONOMIC DESIGN

Ergonomically designed bath support, providing optimal support, comfort and safety for baby.



scan me!  
Watch the video



This Angelcare Baby Monitor is a Personal Care Product. **Please DO NOT return this to the store**, but contact us initially for advice and assistance:

**Angelcare Helpline** on **0345 009 1789**

**Website:** [www.angelcare.co.uk](http://www.angelcare.co.uk)

**Email:** [helpline@babyhelpline.co.uk](mailto:helpline@babyhelpline.co.uk)

NOTE: Helpline is open Monday to Friday, 10am to 4pm, excluding bank holidays.

