

BUSH

Instruction Manual

CMP42

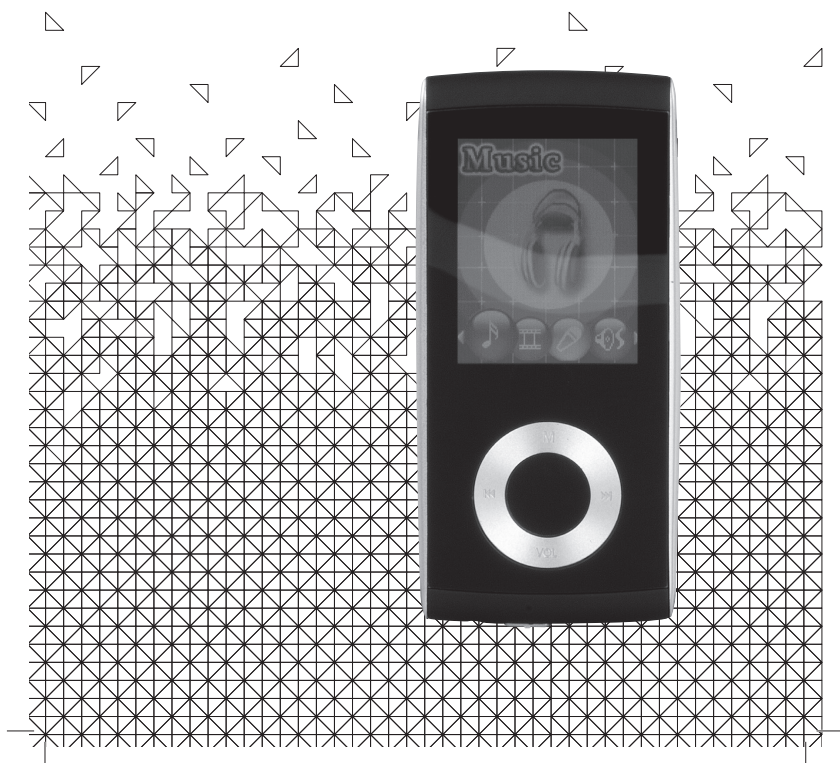
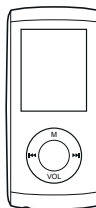


Table of contents

| | |
|----------------------------------------------|---|
| Care & maintenance | 2 |
| Disposal information | 2 |
| Rechargeable battery disposal | 2 |
| Accessories included | 3 |
| Overview of controls | 3 |
| Getting started | 3 |
| Button functions | 4 |
| Connecting to a PC | 4 |
| Earphone connection | 5 |
| Music playback | 5 |
| Display lyrics | 5 |
| Editing lyrics | 5 |
| Repeat mode | 5 |
| Repeat mode | 6 |
| EQ modes | 6 |
| Video playback | 6 |
| Photo browser | 6 |
| Slideshow | 7 |
| Ebook | 7 |
| Auto play setting | 7 |
| Voice recording | 7 |
| Voice recording playback | 7 |
| Voice recording playback (cont) | 8 |
| File management | 8 |
| Game | 8 |
| Settings | 8 |
| Clock | 8 |
| LCD Set | 8 |
| Language | 8 |
| Power Off | 8 |
| Power Off (cont) | 9 |
| Memory Info | 9 |
| Technical specifications | 9 |
| Troubleshooting | 9 |



Product Code

CMP42D



Safety information

Important – Please read these instructions fully before using

CAUTION: TO REDUCE THE RISK OF ELECTRIC SHOCK, DO NOT REMOVE ANY COVER. NO USER-SERVICEABLE PARTS INSIDE, REFER ANY SERVICING TO QUALIFIED SERVICE PERSONNEL.

- Please read this owner's guide
- Please take the time to follow the instructions in this owner's guide carefully. It will help you set up and operate your system properly and enjoy all of its advanced features.
- Please save this owner's guide for future reference.
- The product label is located on the back of the product.
- Heed all warnings - on the product and in the owner's guide.
- Do not use this apparatus near water or moisture.
- Do not use this product near a bathtub, washbowl, kitchen sink, and laundry tub, in a wet basement, near a swimming pool, or anywhere else that water or moisture is present.
- Only use attachments/accessories specified by the manufacturer.
- Unplug this apparatus during lightning storms or when unused for long periods of time - to prevent damage to this product.
- Refer all servicing to qualified service personnel
- Servicing is required when the apparatus has been damaged in any way; such as liquid has been spilled or objects have fallen into the apparatus; the apparatus has been exposed to rain or moisture, does not operate normally, or has been dropped -
- Do not attempt to service this product yourself.
- Opening or removing covers may expose you to dangerous voltages or other hazards.
- To prevent risk of fire or electric shock, avoid overloading wall outlets, extension cords, or integral convenience receptacles.
- Use suitable power sources - Plug the product into a suitable power source, as described in the operating instructions or as marked on the product.
Before making any electrical connections, ensure the following:
- Do not bend, stretch or pull the supply cable in order to avoid electric shock.
- The supply voltage should be the same as that indicated in the technical specifications and the appliance rating plate.



This product complies with European low voltage (2006/95/EC) and electromagnetic compatibility (2004/108/EC) directives.

BUSH

Care & maintenance

Care and cleaning

- **All care and cleaning operations should be carried out with the unit unplugged from the mains power.**
- **Occasionally wipe the cabinet with a lint free duster. Never clean the unit with liquids or solvents.**

Disposal information



WEEE marking "Information for the consumer"

Disposal of your old product Your product is designed and manufactured with high quality materials and components, which can be recycled and reused. When this crossed out wheeled bin symbol is attached to a product it means the product is covered by the European Directive 2002/96/EC. Please make yourself aware of the local collection system for electrical and electronic products. Please act according to your local rules and do not dispose of your old products with your normal household waste. The correct disposal of your old product will help prevent potential negative consequences for the environment and human health.

Rechargeable battery disposal

Your product contains a built-in rechargeable battery covered by the European Directive 2006/66/EC. To safeguard the functionality and safety of your product, always take your product to an official collection point or service centre where a professional can remove the battery.

Please inform yourself about the local rules on separate collection of batteries because the correct disposal will help prevent negative consequences for the environmental and human health. Please do not dispose of your batteries with your normal household waste. Always bring your product to a professional to remove the battery.

This product complies with Electromagnetic compatibility (2004/108/EC) directives.

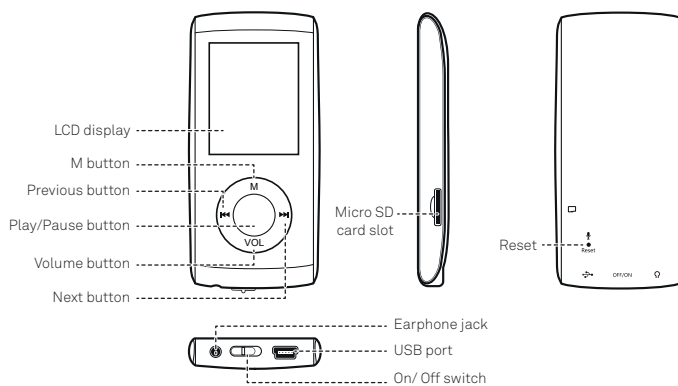
Functions & controls

Please familiarize yourself with the parts and accessories listed below

Accessories included

- 1 x CMP42D
- 1 x Instruction manual
- 1 x USB charging cable
- 1 x earphones

Overview of controls



Getting started

Before use your player will require charging fully. Follow the below instructions to charge.



- 1:** Using the usb charging cable connect the mini usb plug into the usb charge socket on the bottom of the unit.
- 2:** Connect the other end of the cable to a laptop/pc usb input & power on the pc/laptop.
- 3:** During charging you will see the battery animation in the lower right corner of the display. When the charge is at maximum the battery turns fully blue and no longer animates.

User instructions

Button functions

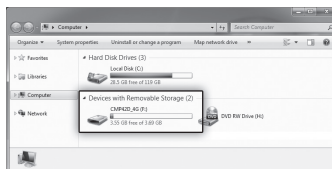
| | To | Press |
|-------------------|----------------------------------------|-----------------------------------------|
| General | Power On/ Off | Switch the On/ Off switch |
| | Turn On/ Off | Hold the Play/Pause button for 1 second |
| | Scroll through lists | ◀/▶ buttons |
| | Select option | M button |
| | Return to previous menu | Press & hold the M button for 1 second |
| | Volume up | Press VOL then press the ▶▶▶ button |
| | Volume down | Press VOL then press the ◀◀◀ button |
| Quit to main menu | Press & hold the M button for 1 second | |
| Music | Play/ Pause tracks | Press the Play / Pause button |
| | Skip to the next track | Press the ▶▶▶ button |
| | Fast forward | Press & hold the ▶▶▶ button |
| | Skip back to previous track | Press the ◀◀◀ button |
| | Fast rewind | Press & hold the ◀◀◀ button |
| | Display lyrics | Press & hold the M button for 1 second |
| Movie | Play/ Pause a movie | Press the Play / Pause button |
| | Skip to next movie | Press the ▶▶▶ button |
| | Fast forward | Press & hold the ▶▶▶ button |
| | Skip back to previous movie | Press the ◀◀◀ button |
| | Fast rewind | Press & hold the ◀◀◀ button |
| Images | Select image | Press the Play / Pause button |
| | Skip to next image | Press the ▶▶▶ button |
| | Skip to previous image | Press the ◀◀◀ button |

Connecting to a PC

Once the unit is charged or during charging you can copy files to the player.

- Follow steps 1-2 of **'Getting started'** to connect the player to a pc/ laptop.
- When the unit is connected a hardware driver is automatically installed and the device is then available in the list of devices (**Named CMP42D-4G**). On some operating systems an auto play window will appear. Choose to take no action and click **OK** to close the window.
- Double click **'My Computer'** Or **'Computer'** on some operating systems. Look for **'Removable disks or storage'** option and locate the device named **'CMP42D-4G'** and double click.

NOTE: Do not disconnect the USB cable at any time when copying data to or from the device.



- Drag & drop media files into the removable device. You can create additional folders using the operating system installed on your pc/ laptop.
- Close the removable device window and disconnect the player from your pc/ laptop after data transfer has completed.

User instructions

Earphone connection

Instructions for earphone usage.



- 1: Connect the 3.5mm earphone plug into the **EARPHONE** socket on the bottom of the unit.



To prevent possible hearing damage, do not listen at high volume levels for long periods.

In music mode, when the volume is adjusted to 85dB the above icon will appear on the display. Press the 'M' button to continue.

If you hear no sound during playback, do not turn the volume up as the music may suddenly begin at a high volume.

Excessive sound pressure from earphones and headphones can cause hearing loss. To avoid damaging your ears, adjust the volume to the lowest safe level before playing, and turn up to the desired level when playback has started.

Music playback

- 1: Select '**MUSIC**' on the main menu and press 'M' to enter music mode.



- 2: To skip through the available tracks on the device using the **◀▶** buttons.
- 3: Press the Play/ Pause button to begin playback of a selected track. To pause playback press the Play/ Pause button once more.
- 4: Press and hold either **◀▶** buttons to fast forward or rewind the current track during playback.
- 5: To adjust the volume levels press the '**VOL**' button and then use the **◀▶** buttons to increase or decrease the level.

Replay mode

Replay mode will allow you to repeat a designated section of an audio track.

- 1: During playback press the '**M**' button to enter the audio function menu.
- 2: Use the **◀▶** buttons to select '**Replay Mode**' and press the '**M**' button to enter the Replay menu.
- 3: Select '**Replay**' and press the '**M**' button to begin the A-B replay settings.
- 4: Press the **▶▶** button to set the '**A**' marker (**beginning of the repeat section**). Press the **▶▶** button once more to set the '**B**' marker (**end of the repeat section**).
- 5: The selected audio will now repeat for the specified amount of times (**see point 6**).
- 6: From the Replay menu you can select '**Replay Times**'. Use the **◀▶** buttons to set the number of times the replay is to repeat. Press the '**M**' button to activate.
- 7: From the Replay menu you can choose '**Replay Gap**' to specify the length of time in-between each '**replay**'. Use the **◀▶** buttons to set the gap time. Press the '**M**' button to activate.

EQ modes

You can apply various sound EQ's to audio following the below steps.

- 1: During playback press the '**M**' button to enter the audio function menu.
- 2: Use the **◀▶** buttons to select '**Equalizer**' and press the '**M**' button to enter the EQ menu.
- 3: Use the **◀▶** buttons to select one of the following options:- Natural, Rock, Pop, Classic, Soft, Jazz & dbb (**dynamic bass boost**).
- 4: Press the '**M**' button to return back to the music interface.

User instructions

Repeat mode

- 1: During playback press the 'M' button to enter the audio function menu.
- 2: Select the **REPEAT** menu by pressing 'M' once.
- 3: Use the **◀▶** buttons to select an option and press the 'M' to activate. The **REPEAT** functions are explained below.

Normal

All audio tracks will be played one by one until the last track is played.

Repeat One

The current track plays repeatedly until the function is disabled.

Folder

Plays all tracks in a selected folder once.

Repeat Folder

Plays all tracks in a selected folder repeatedly until the function is disabled.

Repeat All

Repeats every track on the player until the function is disabled.

Random

Plays every track on the player in a random order until the function is disabled.

Intro

Plays the first 10 seconds of every track on the player until the function is disabled.

Video playback

- 1: Use the **◀▶** buttons and select '**VIDEO**' on the main menu, press 'M' to enter video mode.



- 2: To skip through the available movies on the device use the **◀▶** buttons.
- 3: Press the Play/ Pause button to begin playback of a selected movie. To pause playback press the Play/ Pause button once more.
- 4: Press and hold either **◀▶** button to fast forward or rewind the current movie during playback.
- 5: To adjust the volume level press the Play/ Pause button to pause playback. Press the '**VOL**' button and use the **◀▶** buttons to increase or decrease the level. Press the Play/ Pause button twice to resume video playback/

NOTE: Search the internet for 'AMV converter' software to convert any videos you may have into the compatible format.

Photo browser

- 1: Use the **◀▶** buttons and select '**PHOTO**' on the main menu, press 'M' to enter video mode.



- 2: To skip through the available photos on the device using the **◀▶** buttons.
- 3: Press the Play/ Pause button to begin playback of a selected movie. To pause playback press the Play/ Pause button once more.

User instructions

Slideshow

Should you wish to view all images in a slide show follow the below steps.

- 1: Select any photo in your list and press the 'M' button to enter the file function menu.
- 2: Use the ◀▶ buttons to select 'Playback Set' and press the 'M' button to activate.
- 3: Select 'Auto Play' and press the 'M' button.
- 4: Use the ◀▶ buttons to increase or de-crease the playback duration of each photo. Press the 'M' button to return to the photo list.
- 5: Press the Play/ Pause button to begin the slideshow.
- 6: To reset the playback button to manual viewing select 'Manual Play' in step 3 above.

Ebook

- 1: Use the ◀▶ buttons and select 'EBOOK' on the main menu, press 'M' to enter ebook mode.



- 2: To skip through the available ebooks on the device using the ◀▶ buttons.
- 3: Press the Play/ Pause button to begin playback of a selected ebook
- 4: To skip through the pages of the ebook use the ◀▶ buttons.

NOTE: The ebook format is :TXT' so you may need to copy and paste ebook's in any other format into a text document and re-save.

Auto play setting

Instead of manually pressing the skip buttons to skip the pages you can set a timer to skip pages after a certain amount of seconds. Follow the below steps to activate this function.

- 1: Select any ebook in your list and press the 'M' button to enter the file function menu.

Auto play setting (cont)

- 2: Use the ◀▶ buttons to select 'Playback Set' and press the 'M' button to activate.
- 3: Select 'Auto Play' and press the 'M' button.
- 4: Use the ◀▶ buttons to increase or de-crease the playback duration of each page. Press the 'M' button to return to the ebook list.
- 5: Press the Play/ Pause button to begin displaying the ebook. The pages will skip after the duration set in step 4.

Voice recording

To record using the internal microphone follow the below steps.

- 1: Use the ◀▶ buttons and select 'RECORD' on the main menu, press 'M' to enter voice record mode.



- 2: Press the Play/ Pause button to begin recording. The display will show a timer and the **PLAY** icon ▶ will appear in the bottom left corner.
- 3: To pause recording press the Play/ Pause button once more. The **PAUSE** icon ⏸ will replace the **PLAY** icon in the bottom left corner.
- 4: To save a recording press and hold the 'M' button for 1 second.
- 5: To change the recording quality press the 'M' button in stop mode and select '**REC Type**' from the list, and press the 'M' button to enter the option menu.
- 6: Select from **32**kbps, **64**kbps, **128**kbps or **256**kbps bitrates using the ◀▶ buttons and press 'M' to activate.

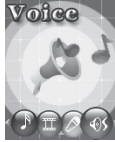
NOTE:The higher the bitrate the bigger the file size will be and the less you will be able to record. You can see this effect in the 'remaining' section of the record display.

User instructions

Voice recording playback

To play back recordings follow the below steps.

- 1: Use the **◀▶** buttons and select **'VOICE'** on the main menu, press **'M'** to enter voice playback mode.



- 2: To skip through the available tracks on the device using the **◀▶** buttons.

NOTE: This method displays all audio tracks on the player, not just voice recordings.

- 3: Press the Play/ Pause button to begin playback of a selected track. To pause playback press the Play/ Pause button once more.
- 4: Press and hold either **◀▶** buttons to fast forward or rewind the current track during playback.
- 5: To adjust the volume levels press the **'VOL'** button and then use the **◀▶** buttons to increase or decrease the level.
- 6: To select from a simple list of just recordings press the **'M'** button from the **'VOICE'** main menu. The press the **'M'** button again to select **'Local Folder'**.
- 7: Use the **◀▶** buttons to skip through the voice tracks and press the **'M'** button to begin playback.

File management

- 1: In Stop/ Pause mode press the **'M'** button to enter the file management menu.
- 2: Use the **◀▶** buttons to select an option and press the **'M'** button to enter the option menu.

| | |
|--------------|-----------------------------------------------------------------|
| Local Folder | Displays all files from the internal memory in a list format. |
| Card Folder | As above, but displays the contents of an SD card (if present). |
| Delete File | When activated allows you to select a file for deletion. |
| Delete All | Delete all files |

File management (cont)

NOTE: Use the **◀▶** buttons to select files & select **'Yes'** & **'No'**. Press the **'M'** button to activate/ select.

Game

- 1: Use the **◀▶** buttons and select **'GAME'** on the main menu, press **'M'** to enter the game options menu. Press the **'M'** button to select **'BoxMan'**.
- 2: Press the **'M'** button to begin the game.
- 3: The game is controlled using the following buttons:-

| | |
|-----|-------|
| M | Up |
| VOL | Down |
| ◀▶ | Left |
| ▶▶ | Right |

- 4: To exit the game press the Play/ Pause button.

Settings



LCD Set

Dark Mode

Sets the duration before the display backlight dims.

- 1: Use the **◀▶** buttons to select the time span.
- 2: Press the **'M'** button to select & return to the menu.

Language

- 1: Use the **◀▶** buttons to select a language.
- 2: Press the **'M'** button to select & return to the menu.

User instructions

Power Off

Off Time

Sets the period of inactivity before the player enters standby mode.

- 1: Use the **◀◀/▶▶** buttons to adjust the slider to the time duration you wish to set between **10-200** seconds.
- 2: Press the **'M'** button to select & return to the menu.

Sleep Time

When listening to audio or watching a video you can allocate a timer to switch the unit into standby mode.

- 1: Use the **◀◀/▶▶** buttons to adjust the slider to the time duration you wish to set between **10-120** mins.
- 2: Press the **'M'** button to select & return to the menu

NOTE: If you are not listening to audio or watching a video the device will enter standby from the 'Off Time' setting long before the 'Sleep Time' setting is reached.

Memory Info

When selected displays the amount of free memory available in Megabytes and a percentage.

Technical specifications

Power Supply 180mAh, 3.7V Lithium battery
 Dimensions 42 x 89 x 10mm
 Weight 30g
 Capacity 4GB internal flash memory
 Supported OS Windows 2000, XP or above
 Interface USB 2.0

Supported music formats MP3, WMA
 Voice record formats WAV
 Video playback format AMV @ 128x128px
 Supported photo format JPG, BMP & GIF

Troubleshooting

In the unlikely event of difficulties with your appliance please follow the trouble shooting guide below. If the problem persists, contact the retailer if the machine is still under guarantee. Customer **helpline: 0870 600 3030**

| Problem | Reason(s) | Solution(s) |
|---------------------------|-----------------------------------------------------------------------------------------------------------------------------------------------------------------------------------------------------------------------------------------|----------------------------------------------------------------------------------------------------------------------------------------------------------------------------------------------------------------------------------------------------------------------------------|
| No Power | <ul style="list-style-type: none"> • The unit requires charging | <ul style="list-style-type: none"> • Connect to a PC or laptop using the supplied cable to charge. Or purchase a compatible USB mains charger. |
| No Sound | <ul style="list-style-type: none"> • Volume is too low • Playback is not initiated • No audio files have been copied to the internal memory • The earphones have not been connected correctly | <ul style="list-style-type: none"> • Increase the volume • Press the PLAY/PAUSE button • Follow 'Connecting to a PC' instructions on page 4 of this manual • Insert the 3.5mm earphone plug into the earphone socket on the MP3 player |
| Sound is distorted | <ul style="list-style-type: none"> • Volume is too high | <ul style="list-style-type: none"> • Reduce the volume |

Guarantee

BUSH

PRODUCT GUARANTEE

This product is guaranteed against manufacturing defects for a period of



Year

This product is guaranteed for twelve months from the date of original purchase.

Any defect that arises due to faulty materials or workmanship will either be replaced, refunded or repaired free of charge where possible during this period by the dealer from whom you purchased the unit.

The guarantee is subject to the following provisions:

- The guarantee does not cover accidental damage, misuse, cabinet parts, knobs or consumable items.
- The product must be correctly installed and operated in accordance with the instructions contained in this manual.
- It must be used solely for domestic purpose.
- The guarantee will be rendered invalid if the product is re-sold or has been damaged by inexpert repair.
- Specifications are subject to change without notice.
- The manufacturer disclaims any liability for the incidental or consequential damages.
- The guarantee is in addition to, and does not diminish your statutory or legal rights.

Guarantor: Argos Limited
489 - 499 Avebury Boulevard
Central Milton Keynes
MK9 2NW