

VAC & STEAM

ALL-IN-ONE VACUUM AND STEAM MOP

USER GUIDE

1132 SERIES

IMPORTANT SAFETY INSTRUCTIONS

READ ALL INSTRUCTIONS BEFORE USING YOUR HARD FLOOR CLEANER.

When using an electrical appliance, basic precautions should be observed, including the following.

WARNING

ALWAYS CONNECT TO A PROPERLY EARTHED ELECTRICAL SOCKET.

WARNING

TO REDUCE THE RISK OF FIRE, ELECTRIC SHOCK, OR INJURY:

- » Do not direct steam at people, animals, or equipment containing electrical components.
 - » Unplug from outlet when not in use and before conducting maintenance or troubleshooting.
 - » Do not leave unattended.
 - » Do not allow to be used as a toy.
 - » Close attention is necessary when used by or near children.
 - » This appliance can be used by children aged from 8 years and above and persons with reduced physical, sensory or mental capabilities or lack of experience and knowledge if they have been given supervision or instruction concerning use of the appliance in a safe way and understand the hazards involved. Children shall not play with the appliance. Cleaning and user maintenance shall not be made by children without supervision.
 - » Do not immerse in water.
 - » Do not use for any purpose other than described in this User Guide.
 - » Use extra care when cleaning on stairs.
 - » Use only manufacturer's recommended attachments; use of attachments not provided or sold by BISSELL may cause fire, electric shock or injury.
-
- » Never put descaling, aromatic, alcoholic or detergent products into the appliance, as this may damage it or make it unsafe for use.
 - » Do not use with damaged cord or plug.
 - » If the supply cord is damaged, it must be replaced by the manufacturer, its service agent or similarly qualified persons in order to avoid a hazard.
 - » If appliance has been dropped, damaged, left outdoors, or dropped into water, have it repaired at an authorized service center.
 - » Do not pull or carry by cord, use cord as a handle, close a door on cord, or pull cord around sharp edges or corners. Do not run appliance over cord. Keep cord away from heated surfaces.
 - » Do not unplug by pulling on cord. To unplug, grasp the plug, not the cord.
 - » Do not handle with wet hands.
 - » Do not put any object into appliance openings, or restrict air flow.
 - » Do not use with any opening blocked.
 - » Keep openings free of dust, lint, hair and anything that may reduce airflow.
 - » Keep hair, loose clothing, fingers, and all parts of body away from openings and moving parts.
 - » Do not pick up flammable materials (lighter fluid, gasoline, kerosene, etc.) or use in the presence of explosive liquids or vapors.
 - » Do not pick up toxic material (chlorine bleach, ammonia, drain cleaner, etc.).
 - » Do not use appliance in an enclosed space filled with vapors given off by oil base paint, paint thinner, some moth proofing substances, flammable dust, or other explosive or toxic vapors.
 - » Do not use on leather, wax polished furniture or floors, synthetic fabrics, velvet or other delicate, steam-sensitive materials.
 - » Do not use outdoors.
 - » Do not pick up hard or sharp objects such as glass, nails, screws, coins, etc.
 - » Do not pick up anything that is burning or smoking, such as cigarettes, matches, or hot ashes.
 - » Do not use without dust cup or filters in place.
 - » Always turn off this appliance before connecting or disconnecting the nozzle.
 - » Use only on indoor surfaces.
 - » Keep appliance on a level surface.
 - » Always turn off vacuum mode if you encounter liquid on the floor.

WARNING

SURFACE MAY BE HOT. AVOID CONTACT.



**THIS SYMBOL MEANS
WARNING: DANGER OF SCALDING**

FOR OPERATION ON A 220-240 VOLT A.C. 50/60 HZ POWER SUPPLY ONLY.

This model is for household use only.

SAVE THESE INSTRUCTIONS FOR FUTURE USE

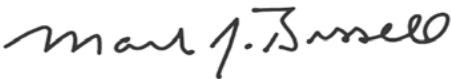
Thanks for buying a BISSELL hard floor cleaner

We're glad you purchased a BISSELL hard floor cleaner. Everything we know about floor care went into the design and construction of this complete, high-tech home cleaning system.

Your BISSELL hard floor cleaner is well made, and we back it with a limited two-year guarantee. We also stand behind it with a knowledgeable, dedicated Consumer Care department, so, should you ever have a problem, you'll receive fast, considerate assistance.

My great-grandfather invented the floor sweeper in 1876. Today, BISSELL is a global leader in the design, manufacture, and service of high quality homecare products like your BISSELL hard floor cleaner.

Thanks again, from all of us at BISSELL.



Mark J. Bissell
Chairman & CEO

Safety Instructions.....	2
Product View.....	4
Assembly	5
Operations	5-7
Maintenance & Care	7-9
Troubleshooting	10
Replacement Parts	11
Accessories	11
Guarantee.....	12
Consumer Care.....	12



Product View

- 1 Steam Trigger
- 2 Easy Touch Digital Controls™ – LO/Hi Steam & Vac On/Off
- 3 Cord Clip
- 4 Adjustable Handle
- 5 25' Power Cord
- 6 Water Tank with Easy Fill Opening
- 7 Vacuum Filter
- 8 Bottom Empty Dirt Bin
- 9 Microban® Mop Pads
- 10 Quick Release Pad Tray™
- 11 Water Cup
- 12 Water Filter



⚠ WARNING
Plastic film can be dangerous. To avoid danger of suffocation, keep away from babies and children.

⚠ WARNING
Do not plug in your hard floor cleaner until you are familiar with all instructions and operating procedures.

⚠ WARNING
To reduce the risk of electric shock, turn power switch off and disconnect polarized plug from electrical outlet before performing maintenance or troubleshooting checks.

Assembly

Your hard floor cleaner assembles quickly and easily, with no tools required.

To assemble the unit

Insert the body into the foot until you hear the locking tab click.



WARNING

Do not plug in your hard floor cleaner until you are familiar with all instructions and operating procedures.

Operations

Special Features

Easy Touch Digital Controls™

The fingertip power controls are located on the front of the handle. Settings include:

(HI) - High Steam Use for durable floors or on sticky messes. To turn steam on, click once. Click again to turn steam off. Can be used simultaneously with the vacuum function or separately as a steam mop only.

(LO) - Low Steam Use on delicate floors or for dust-mopping. To turn steam on, click once. Click again to turn steam off. Can be used simultaneously with the vacuum function or separately as a steam mop only.

NOTE: You must select a steam setting first and then hold down the hand trigger to produce steam.

(VAC) - Vacuum On/off switch. Can be used simultaneously with either steam function or separately as a stick vacuum only.

NOTE: All settings can be used alone or either steam setting can be used simultaneously with the vacuum setting.

Microfiber Mop Pads with Microban® Antimicrobial Product Protection

Reusable microfiber mop pads are machine washable and safe for virtually all hard floor surfaces. Your hard floor cleaner may have come with two different pads. The white microfiber pad is best for everyday use on delicate flooring like sealed hardwoods and laminate. The gray and white striped pad can be used for scrubbing heavily soiled floors and cleaning tougher messes. The Microban® Antimicrobial Product Protection fights odor causing bacteria for a fresher and cleaner mop pad.

WARNING

Appliance will not pick up crayons, marbles and other large objects.

Tip

» Do not attempt to use your hard floor cleaner on the steam setting without water in the tank. You may hear a knocking sound indicating there is no water.

WARNING

Be sure to turn off vacuum mode if you encounter liquid on the floor

Operations

Getting Ready

The mop pad may have already come attached to the mop pad tray on the foot of the unit. If not, please follow step 1 below

1. Attach mop pad.

- Step on foot release for mop pad tray to lift unit off tray.
- Add Freshening Disc in the mesh pocket in the mop pad. Use the whole disc for refreshing scent or cut in half for a lighter scent.
- Wrap mop pad around the bottom of the tray, making sure the gray stitching is in the front and the quick release tab is in the back.
- Put the mop pad tray back down on the floor and set the unit back on top. It will click into place.

2. Fill the water tank.

- On the back of the unit, open the Easy Fill opening of the water tank and use the included water cup to fill the water tank with water. Don't overfill or water may spill from the tank. For best results, water should be at room temperature.
- Close the Easy Fill opening.
- The water tank holds 13oz. and will last approximately 15 minutes depending on the amount of the steam used during cleaning.

3. Twist the Quick Release™ cord wrap clockwise to unwrap the power cord completely and plug into an outlet as described on the Important Safety Instructions on page 2.

4. Adjust the handle for your most comfortable cleaning height by pressing the tab at the base of the handle with one hand and pulling the handle up with your other hand.

NOTE: Upon the first use of the hard floor cleaner or first use after refilling the water tank, the pump may make a 'knocking' sound. This is normal and could last up to 30 seconds.

WARNING

Do not operate appliance with damp or wet filters or without all filters in place.

1a.



1b.



1c.



WARNING

Tinted plates on foot may get hot while steam mop is in use. Do not touch while hot.

2.



4.



Tip

» Use of distilled water is recommended to prolong the life of your hard floor cleaner.

Operations

Using Your Vac & Steam Hard Floor Vacuum and Steam Mop

The hard floor cleaner can be used as a stick vacuum and a steam mop at the same time or separately. For best results, use the powerful vacuum to clear floor of dust and small debris as you steam mop.

Your hard floor cleaner is designed to clean hard flooring, such as ceramic tile, vinyl, marble, stone and sealed hard wood floors. Use on waxed or some unwaxed floors may result in a diminished glossiness. The hard floor cleaner is not for use on unsealed wood floors. For best results, test in an inconspicuous area and check the care instructions from your flooring manufacturer.

1. Plug the unit in and wait 30 seconds for it to heat up. When the Steam Ready light illuminates, choose the level of steam to clean your floor: **HI** (for durable floors or sticky messes) or **LO** (for delicate floors or every day cleaning).
2. Press steam trigger on the underside of the handle to actuate steam
3. Push the **VAC** switch down to turn on the cyclonic vacuum.
4. Begin cleaning by slowly passing the unit over the floor surface while pressing the steam trigger on the underside of the handle.
5. When the hard floor cleaner stops emitting steam, turn the unit off (both steam mop and vacuum functions) and unplug. Open the Easy Fill opening of the water tank and use the water cup to add more water to the tank. For best results, water should be at room temperature. Then close the Easy Fill opening, turn the unit back on and continue cleaning.

WARNING

Never put descaling, alcoholic, or detergent products into the steam cleaner, as this may damage it or make it unsafe for use.

1.



2.



Tip

» To sanitize an area of your floor (attacking invisible germs and bacteria), place the hard floor cleaner over the spot for a minimum 15 seconds using continuous steam, but no longer than 20 seconds using continuous steam. For larger areas, overlap mop head placement.

Tip

» For vacuum use on low pile area rugs, remove pad tray for improved performance.

Maintenance & Care

Removing Mop Pad

1. Unplug hard floor cleaner from electrical outlet.
2. Step on foot release for mop pad tray to lift unit off tray.
3. Carefully remove mop pad from the mop pad tray using the Quick Release™ Tab. The mop pad and tray may be hot.
4. Put the mop pad tray back down on the floor and set the unit back on top. It will click into place.
5. Mop pad can be machine washed in warm water. Use only liquid detergents. Do not use fabric softeners or bleach. For best results, air dry.

WARNING

To reduce the risk of electric shock, turn power switch off and disconnect polarized plug from electrical outlet before performing maintenance or troubleshooting checks.

2.



Maintenance & Care

Empty Dirt Tank

The dirt tank needs to be emptied when the dirt reaches the 'Full' line on the side of the tank.

1. Unplug hard floor cleaner from electrical outlet.
2. Remove the Easy Empty dirt tank from the unit by moving the lock button on the front of the unit to the left.
3. Hold the dirt tank over a garbage container. Press the bottom lid release button on the back of the dirt tank to empty dirt.
4. Mount the Easy Empty dirt tank back on the vacuum base and push the lock button to the right until it is centered on the front of the unit.

NOTE: The dirt tank may be washed in warm water with a mild detergent. Make sure it is completely dry before replacing.

Cleaning or Replacing the Vacuum Filter

The key to maximum performance is having a clean filter. Cleaning the filter after each use will help your vacuum operate at peak efficiency. Use only genuine BISSELL model number 1250 replacement filters in your BISSELL hard floor cleaner. To purchase visit www.BISSELL.com.

To clean filter:

1. Turn power off and unplug unit.
2. Remove the dirt container from the unit, as directed above.
3. Remove filter and tap firmly against the inside of a waste container, removing any visible dirt.
4. Replace filters back into the dirt container and attach dirt container to the base of the unit. Slide the lever to your right to lock.

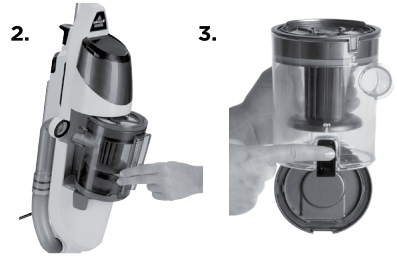
NOTE:

- After heavy usage, you may clean the pre-motor, foam filter by washing it gently by hand in warm water and mild dish detergent. Rinse thoroughly and make certain it is completely dry before replacing it.
- You may replace the paper, pleated filter when dirty. Recommended replacement is every 6 months.

Reference page 10 for replacement part information.

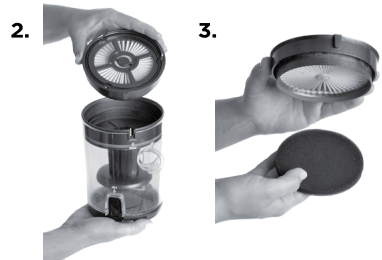
WARNING

To reduce the risk of electric shock, turn power switch off and disconnect polarized plug from electrical outlet before performing maintenance or troubleshooting checks.



CAUTION

Upright storage of the cleaner with a wet mop pad may result in the formation of white marks on your floor. To remove the white marks, clean area with vinegar.



Maintenance & Care

Replacing the Water Filter

Some models will come with an optional water filter:

It is recommended to fill your unit with distilled water only. It is essential to check the filter and replace it when it is no longer effective. Change the filter when the green grains turn blue.

If the filter is not changed at the appropriate time, calcium deposits may accumulate on the heater, causing damage or reduced performance.

To replace the filter:

1. Using the grips on the side of the filter, pull filter out of the unit.
2. Push filter firmly into the machine until it's flush.

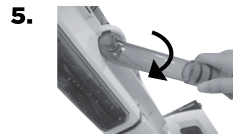
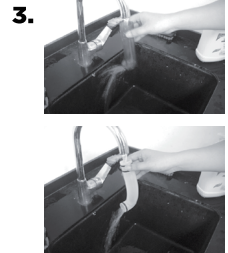
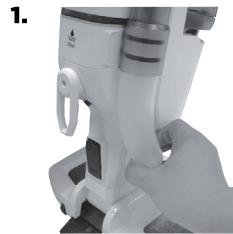
Reference page 11 for replacement part information.

WARNING

To reduce the risk of electric shock, turn power switch off and disconnect polarized plug from electrical outlet before performing maintenance or troubleshooting checks.

Cleaning Hose Tube

1. Grab bottom end of the hose and pull lower portion away from the body.
2. Separate the hose into two pieces.
3. Wash hose.
4. Align the top of the hose to the grooves on the hose opening of the unit.
5. Twist hose down to insert lower portion of hose to the unit.
6. Make sure hose fits tightly into the unit.



Cleaning Foot of Unit

1. To clean the foot and bristles, push the release button on the back of the pivot joint and pull the foot to release it from the appliance.

2. Wash bottom of foot and bristles with cold water.

NOTE: Make sure foot and bristles are dry before attaching the foot to the appliance.

3. To re-attach the foot to the appliance: place the foot on the floor, push the appliance down into the foot and then listen for the click that sounds when properly attached.



Troubleshooting

WARNING

To reduce the risk of electric shock, turn power switch off and disconnect polarized plug from electrical outlet before performing maintenance or troubleshooting checks.

Problem	Possible causes	Remedies
Vacuum cleaner has low suction	Dirt container is full	Empty dirt container
	Dirt container is not installed properly	Position container correctly and move lock button to the right until it is in the center of the unit
	Foot is loose	Make sure foot is fully inserted into body of unit
	Filters need cleaning	Follow filter instructions on page 8
	Filters need replacing	Visit www.bissell.com to order replacement filters
	Hose tube is not installed properly	Follow instructions on page 9
Visible dirt escaping from cleaner	Dirt container is full of debris	Empty dirt container
	Filter is missing or installed incorrectly	Check filter for correct installation
	Dirt container installed incorrectly	Position container correctly and move lock button to the right until it is in the center of the unit
Reduced steam or no steam	Water tank empty	Fill tank
	Steam level not selected	Select steam level by pushing steam level button
	Water filter is not installed properly	Push the water filter all the way into the unit until it's flush

Please do not return this product to the store.

Other maintenance or service not included in the manual should be performed by an authorized service representative.

Thank you for selecting a BISSELL product.


Replacement Parts

These items are available for your BISSELL Vac & Steam Hard Floor Vacuum and Steam Mop. Please visit www.bissell.com to order.

PART #	PART NAME		PART #	PART NAME	
1602389	Water Cup		1602390	Mop Pad Tray	
1602392	Filter-Pleated, Inner Circle		1602393	Pre-Motor Foam Filter	
1602394	Hose		1602395	Dirt Cup	

Accessories

These items are available for your BISSELL Vac & Steam Hard Floor Vacuum and Steam Mop. Please visit www.bissell.com to order.

PART #	PART NAME		PART #	PART NAME	
1252	Vac & Steam Hard Floor Vacuum and Steam Mop Mop Pad Kit		1251	Vac & Steam Hard Floor Vacuum and Steam Mop Water Filter Kit	
1250	Vac & Steam Hard Floor Vacuum and Steam Mop Motor Filters Replacement Kit		1095	Spring Breeze Fragrance Discs	



Consumer Guarantee

This Guarantee only applies outside of the USA and Canada. It is provided by BISSELL International Trading Company BV ("BISSELL").

This Guarantee is provided by BISSELL. It gives you specific rights. It is offered as an additional benefit to your rights under law. You also have other rights under law which may vary from country to country. You can find out about your legal rights and remedies by contacting your local consumer advice service. Nothing in this Guarantee will replace or lessen any of your legal rights or remedies. If you need additional instruction regarding this Guarantee or have questions regarding what it may cover, please contact BISSELL Consumer Care or contact your local distributor.

This Guarantee is given to the original purchaser of the product from new and is not transferable. You must be able to evidence the date of purchase in order to claim under this Guarantee.

Limited Two-Year Guarantee

Subject to the *EXCEPTIONS AND EXCLUSIONS identified below, BISSELL will for two years from the date of purchase by the original purchaser repair or replace (with new or remanufactured components or products), at BISSELL's option, free of charge, any defective or malfunctioning part or product.

BISSELL recommends that the original packaging and evidence of the date of purchase be kept for the duration of the Guarantee period in case the need arises within the period to claim on the Guarantee. Keeping the original packaging will assist with any necessary re-packaging and transportation but is not a condition of the Guarantee.

If for your product is replaced by BISSELL under this Guarantee, the new item will benefit from the remainder of the term of this Guarantee (calculated from the date of the original purchase). The period of this Guarantee shall not be extended whether or not your product is repaired or replaced.

*EXCEPTIONS AND EXCLUSIONS FROM THE TERMS OF THE GUARANTEE

This Guarantee applies to products used for personal domestic use and not commercial or hire purposes. Consumable components such as filters, belts and mop pads, which must be replaced or serviced by the user from time to time, are not covered by this Guarantee.

This Guarantee does not apply to any defect arising from fair wear and tear. Damage or malfunction caused by the user or any third party whether as a result of accident, negligence, abuse, neglect, or any other use not in accordance with the User Guide is not covered by this Guarantee.

An unauthorised repair (or attempted repair) will void this Guarantee whether or not damage has been caused by that repair/attempt.

Removing or tampering with the Product Rating Label on the product or rendering it illegible will void this Guarantee.

SAVE AS SET OUT BELOW BISSELL AND ITS DISTRIBUTORS ARE NOT LIABLE FOR ANY LOSS OR DAMAGE THAT IS NOT FORESEEABLE OR FOR INCIDENTAL OR CONSEQUENTIAL DAMAGES OF ANY NATURE ASSOCIATED WITH THE USE OF THIS PRODUCT INCLUDING WITHOUT LIMITATION LOSS OF PROFIT, LOSS OF BUSINESS, BUSINESS INTERRUPTION, LOSS OF OPPORTUNITY, DISTRESS, INCONVENIENCE OR DISAPPOINTMENT. SAVE AS SET OUT BELOW BISSELL'S LIABILITY WILL NOT EXCEED THE PURCHASE PRICE OF THE PRODUCT.

BISSELL DOES NOT EXCLUDE OR LIMIT IN ANY WAY ITS LIABILITY FOR (A) DEATH OR PERSONAL INJURY CAUSED BY OUR NEGLIGENCE OR THE NEGLIGENCE OF OUR EMPLOYEES, AGENTS OR SUBCONTRACTORS; (B) FRAUD OR FRAUDULENT MISREPRESENTATION; (C) OR FOR ANY OTHER MATTER WHICH CANNOT BE EXCLUDED OR LIMITED UNDER LAW.

Consumer Care

If your BISSELL product should require service or to claim under our Limited Two-Year Guarantee, please visit:

Website or E-mail:

www.BISSELL.com

Or Call:

BISSELL Consumer Care

0844.888.6644

Monday – Thursday, 9am - 5pm

Friday 9am - 4pm

Or Write:

BISSELL Homecare (Overseas) Inc.

Ground Floor

226 Berwick Avenue

Slough

Berkshire SL1 4QT

United Kingdom

Visit the BISSELL website: www.BISSELL.com

When contacting BISSELL, have model number of cleaner available.

Please record your Model Number: _____ Please record your Purchase Date: _____

NOTE: Please keep your original sales receipt. It provides proof of the date of purchase in the event of a Guarantee claim. See Guarantee for details.



©2013 BISSELL Homecare, Inc.
Grand Rapids, Michigan
All rights reserved. Printed in China
Part Number 160-2386 Rev 08/13 RevB
Visit our website at: www.BISSELL.com
MICROBAN is a registered trademark
of Microban Products Company.