



# C86-VC-B

## User Guide

C87-T2 Series and C86-VC-B



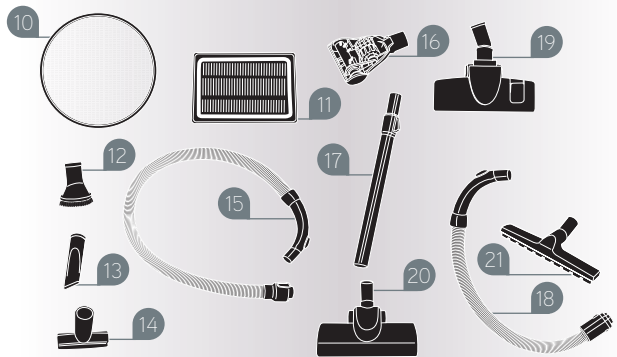
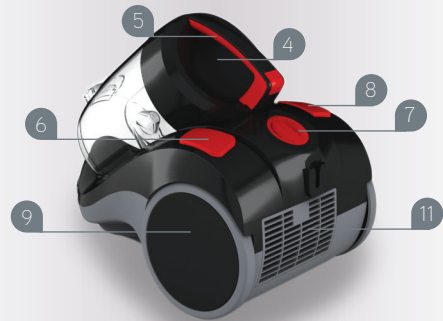
Performance is everything.™

# Contents

Contents	1
Machine Overview	2
General Safety Information	3
Getting Started	4
Maintenance	5
Looking After Your Machine – Filters	6
Looking After Your Machine – Removing Blockages	7
FAQs	8
Other Information	9
Guarantee	10

# Machine Overview

- 1 Hose connector
- 2 Dirt container
- 3 Cyclone separator and shroud
- 4 Dirt container lid
- 5 Carry handle
- 6 On/off button
- 7 Variable power dial
- 8 Cord rewind button
- 9 Wheel
- 10 Pre-motor filter  
(some models only)
- 11 Post motor filter HEPA H12
- 12 Dusting brush
- 13 Crevice tool
- 14 Upholstery tool
- 15 Hose and handle
- 16 TurboTool (some models only)
- 17 Extension tube and tool caddy
- 18 Stretch hose (some models only)
- 19 Combination floor head  
(some models only)
- 20 Turbobrush  
(some models only)
- 21 Hard floor tool  
(some models only)



**NOTE:** Some parts may vary according to model. Please check inside flap of box for more details.

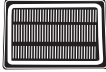
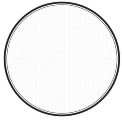
# General Safety Information

**This vacuum cleaner is intended for household use only and NOT for commercial or industrial use. Please keep instructions for further use.**

When using the vacuum cleaner basic safety precautions should always be observed, including the following:

1. Do not leave the vacuum cleaner unattended when plugged in. Unplug the appliance from the socket when not in use.
2. Only use the vacuum cleaner indoors on dry surfaces.
3. Turn off the on/off switch on the vacuum cleaner controls before disconnecting or connecting from the mains supply.
4. Always unplug the vacuum cleaner before connecting or disconnecting the vacuum hose and accessories.
5. Children should be supervised to ensure that they do not play with the appliance.
6. This appliance is not intended for use by children under eight years of age and persons with reduced physical, sensory or mental capabilities or lack of experience and knowledge, unless they have been given supervision or instruction concerning use of the appliance in a safe way and understands the hazards involved.
7. Cleaning and maintenance shall not be made by children without supervision.
8. The appliance should only be used as described in the quick start guide or in the full online user guide.
9. Only Vax recommended attachments should be used with this appliance.
10. Do not use this vacuum cleaner if it has been dropped, damaged, left outdoors or dropped into water. Do not use this vacuum cleaner with a damaged cord or plug. If the supply cord is damaged return the vacuum cleaner to a Vax authorised Service Agent or a suitably qualified person for examination, repair or adjustment.
11. Do not pull or carry this appliance by the cord. Do not use the cord as a handle, close a door on the cord or pull the cord around sharp edges or corners. Do not run the vacuum cleaner over the cord. Keep the cord away from heated surfaces.
12. Do not handle the plug or the vacuum cleaner with wet hands.
13. Keep hair, loose clothing, fingers and all parts of the body away from openings and moving parts.
14. Do not pick up any hot coals, cigarette butts, matches or any hot, smoking or burning objects.
15. Do not vacuum up hard or sharp objects such as glass, nails, screws, coins, etc. without ALL of the filters in place.
16. Do not vacuum up harmful or toxic material (chlorine, bleach, ammonia, drain cleaner etc.)
17. Do not vacuum up hard or sharp objects such as glass, nails, screws, coins etc.
18. Store the vacuum cleaner in a cool, dry area.
19. Use only CE approved 13 amp extension cords. Non-approved cords may overheat. Care should be taken to arrange the cord so that the cord cannot be tripped over.
20. Do not put any objects into openings. Do not use with any openings blocked and do not restrict airflow. Keep all openings free of dust, lint, hair or anything that might reduce airflow.
21. Do not use without all of the filters in place.
22. Take extra care when vacuuming on the stairs.
23. Please ensure that the brushbar is turned off when you are vacuuming on the stairs.
24. Keep vacuuming area well lit.

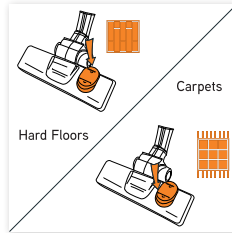
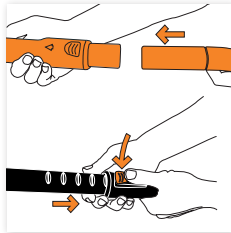
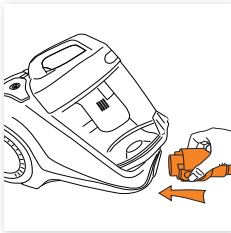
# Getting Started



**NOTE:** The condition of the filters affects the performance of your machine. Please check and wash filters periodically (depending on the level of use). For full cleaning instructions, see pages 5 and 6.

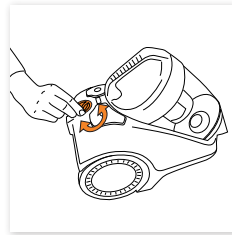
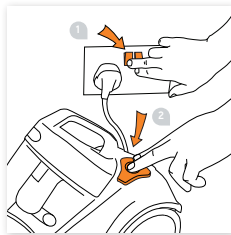
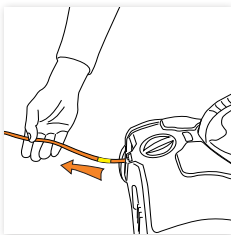
**NOTE:** Do not use the vacuum cleaner without all of the filters in place.

## Assembling your vacuum cleaner



**NOTE:** The Turbobrush, hard floor tool, crevice tool, upholstery tool and dusting brush can all be attached directly to the telescopic tube or hose handle. The TurboTool should first be attached to the supplied connector before fitting onto the hose handle.

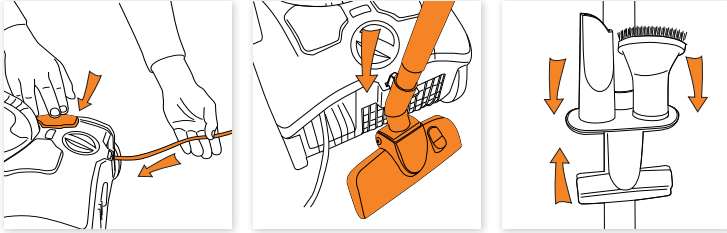
## Operating the appliance and accessories



**NOTE:** Fully unwind the power cord. A yellow mark on the cord indicates the recommended cord length. Do not exceed the cord length beyond the yellow mark.

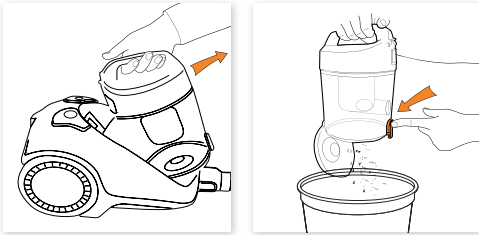
# Maintenance

## Packing away and storage

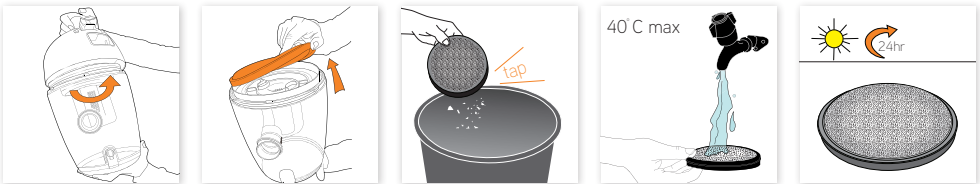


**NOTE:** For convenience there is a parking slot located at the rear of the vacuum cleaner where the floor head and tubes can be attached for storage and carrying.

## Emptying and cleaning the dirt container

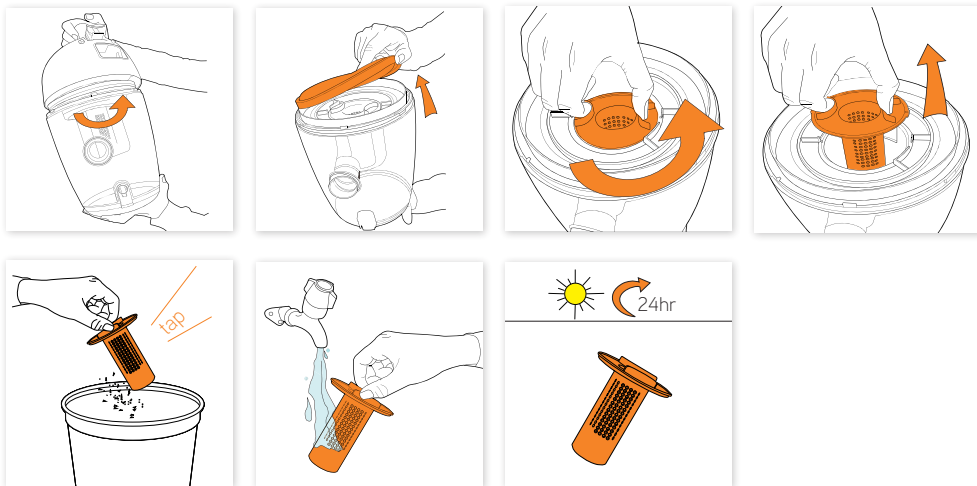


## Cleaning the pre-motor filter



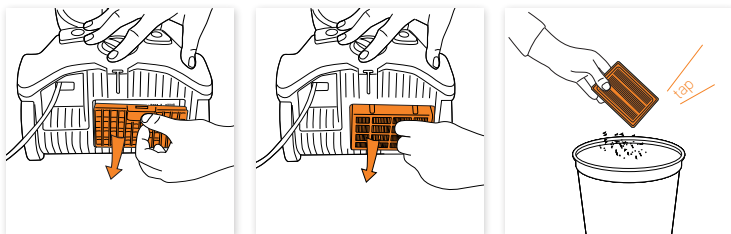
# Looking after your machine – Filters

## Cleaning the shroud



**NOTE:** The shroud is accessed by removing the dirt container lid and is located underneath the pre-motor filter.

## Cleaning the post-motor filter



# Looking after your machine – Removing Blockages

**WARNING:** To reduce the risk of electric shock, the power cord must be disconnected before performing maintenance/troubleshooting checks. Turn the vacuum cleaner off and unplug from the electrical socket.

**IMPORTANT:** If the air inlet, hose or telescopic tube is blocked, switch off the vacuum cleaner and remove the blockage(s) before re-starting the vacuum cleaner.

## Clearing blockages

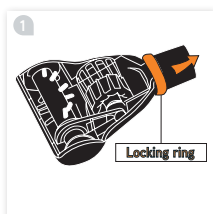
### Hose blockages

The flexible hose may be disconnected from the vacuum cleaner. Carefully remove any blockages found and reconnect the hose securely.

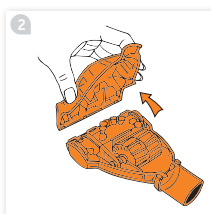
### Accessory blockages

Remove accessory from the hose/telescopic tube. Carefully remove the blockage and return to the cleaner.

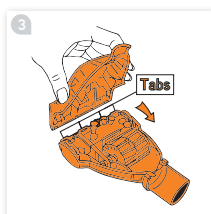
## Removing blockages from the TurboTool (Some models only)



Turn the TurboTool over and slide off the locking ring.

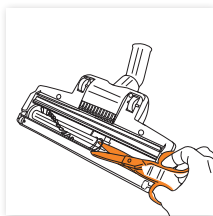


Detach lower housing and remove blockage.



To re-assemble the TurboTool, ensure that the tabs are engaged and pivot the lower housing closed. Slip the locking ring over the neck of the TurboTool and into the groove to finish.

## Removing blockages from the Turbobrush (some models only)



Lay the Turbobrush on a flat surface and turn over to expose the brushbar. Using a pair of scissors, cut through any threads or hairs caught by the brushbar that have wrapped around the guides.



**WARNING:** To reduce the risk of personal injury, unplug the vacuum cleaner before performing maintenance /troubleshooting checks.

#### **Is there an accessory missing?**

- Check the 'Parts Overview' page in this guide to make sure the part is definitely included in your unit.
- If it is missing, we're here to help. Simply call us on 0844 412 8455

#### **Why won't the vacuum cleaner pick up?**

- The dirt container may be incorrectly installed; remove the dirt container from the unit by pressing the dirt container release catch and then re-attaching it to the unit, ensuring it is locked firmly back into place.
- The filter may be clogged; refer to 'Maintenance: Looking after your machine – filters' on pages 5 and 6.
- The dirt container may be blocked; refer to 'Maintenance: Emptying and cleaning the dirt container' on page 5.
- There may be a blockage in the hose/tube; disconnect from the vacuum cleaner. Carefully remove any blockages found and reconnect securely.

#### **Why is dust escaping from the vacuum?**

- The filter may be clogged; refer to 'Maintenance: Cleaning the filters' on pages 5 and 6.
- The dirt container may be blocked; refer to 'Maintenance: Emptying and cleaning the dirt container' on page 5.
- The dirt container may be incorrectly installed; remove the dirt container from the unit by pressing the dirt container release catch and then re-attaching it to the unit, ensuring it is locked firmly back into place.

#### **What do I do if the unit/an accessory becomes damaged or broken?**

- We're here to help. Simply call 0844 412 8455 or visit [vax.co.uk](http://vax.co.uk)

#### **Why won't the accessories pick up properly?**

- Hose blockages: remove the hose from the unit. Carefully remove any blockages found and reconnect hose securely.
- Accessory blockages: remove accessory from handle/tube. Carefully remove blockage and re-attach to the vacuum cleaner.
- The accessory may be faulty. Simply call us on 0844 412 8455 for assistance.

#### **Why will the vacuum cleaner not run?**

- It may not be plugged into the electrical outlet correctly; ensure that the plug is pushed in securely.
- The electrical outlet may not be working properly; check the fuse or breaker, or consult an electrician.
- The motor thermostat may have tripped; switch off and unplug the vacuum cleaner, and leave for one hour before switching the cleaner back on.

# Other Information

## UK Service & Help

Any queries or concerns about using your Vax, simply visit; [vax.co.uk/support](http://vax.co.uk/support) – [vaxireland.ie](http://vaxireland.ie) or call the Vax Careline. Calls are charged at the UK local rate. Please make a note of the serial number and model number of the vacuum cleaner before calling.

Vax Careline:  
(UK) 0844 412 8455  
(ROI) 1-800 928 308

Monday-Friday 8.30am to 6.30pm  
Saturday-Sunday 9.00am to 5.00pm

## Consumables

To purchase spares and accessories, please visit [vax.co.uk](http://vax.co.uk)

C88-T2 series and C86-VC-B pre-motor filter: 1-1-130851-00  
C88-T2 series and C86-VC-B post-motor filter: 1-1-130854-00

Guarantee will only be valid with the use of genuine Vax spares and accessories.



For best performance  
Protect your guarantee

## Technical Specification

Voltage: 220-240V ~50Hz  
Wattage: 2000 - 2200W (depending on model)  
Capacity: 3L  
Filters: Pre-motor filter  
HEPA H12 post-motor filter/HEPA H12 antibacterial post-motor filter (depending on model)  
Cord length: 7m (approx)  
Weight: 5.4kg (approx)  
Subject to technical change without notice.



## EEC Statement of Compliance

Manufacturer/EEC importer: Vax Limited, hereby on our own responsibility, declare that the **C88-T2** series and **C86-VC-B** are manufactured in compliance with the following Directives:

**Safety:** 2006/95/EC Low Voltage Directive

**EMC:** 2004/108/EC Electromagnetic Compatibility Directive



Waste electrical products should not be disposed of with household waste. Please recycle where facilities exist. Check with your Local Authority or retailer for recycling advice.

It's quick and easy to register for your  
**FREE 2 year guarantee**  
online at: [vax.co.uk/guarantees](http://vax.co.uk/guarantees)


Please retain your original receipt for proof of purchase.

UK based customer care centre — Open 7 days a week

Monday-Friday	8:30 - 18:30
Saturday	9:00 - 17:00

## we're here if you need us

Instead of taking me back to the shop, simply visit:  
[vax.co.uk/support](http://vax.co.uk/support) or call (UK) 0844 412 8455 (ROI) 1-800 928 308

Let us know what you think @VaxUK 



**6 year  
guarantee**



For best performance  
Protect your guarantee



Vax Ltd., Kingswood Road, Hampton Lovett, Droitwich, Worcestershire, WR9 0QH, UK  
email: [info@vax.co.uk](mailto:info@vax.co.uk) website: [vax.co.uk](http://vax.co.uk)