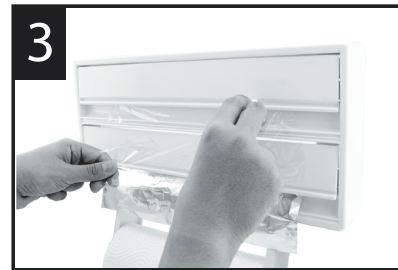
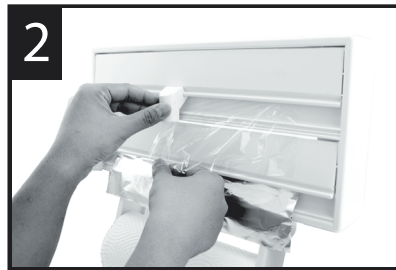
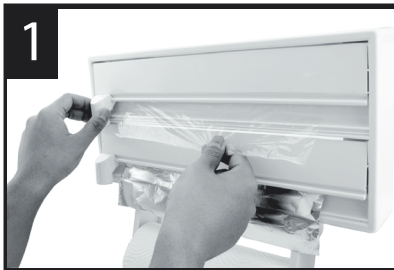


### to install

Choose position on wall where the dispenser is to be hung. Mount the wall plugs provided on the wall. Carefully hang the dispenser on the wall with the dispenser between the screws and the wall plugs like (A).



### to insert and use cling film and foil

Open the cover, install the cling film in the upper case like (C) and the foil in the lower case like (D). Release the beginning of the foil / film from the roll and put it beyond the casing edge. As you clip the cover back over, pull the edges of the rolls through the slot in the cover, and underneath the cutters. Cut off any excess length by sliding the cutter across the sheet like (1)-(6).

### to insert and use kitchen roll

Present the kitchen roll up to the dispenser. Slide the two sides of the holder to fit the required size like (B).

