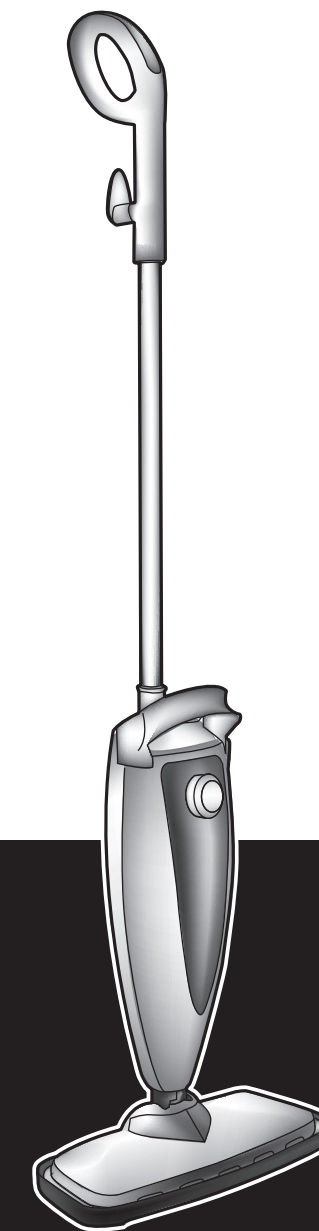




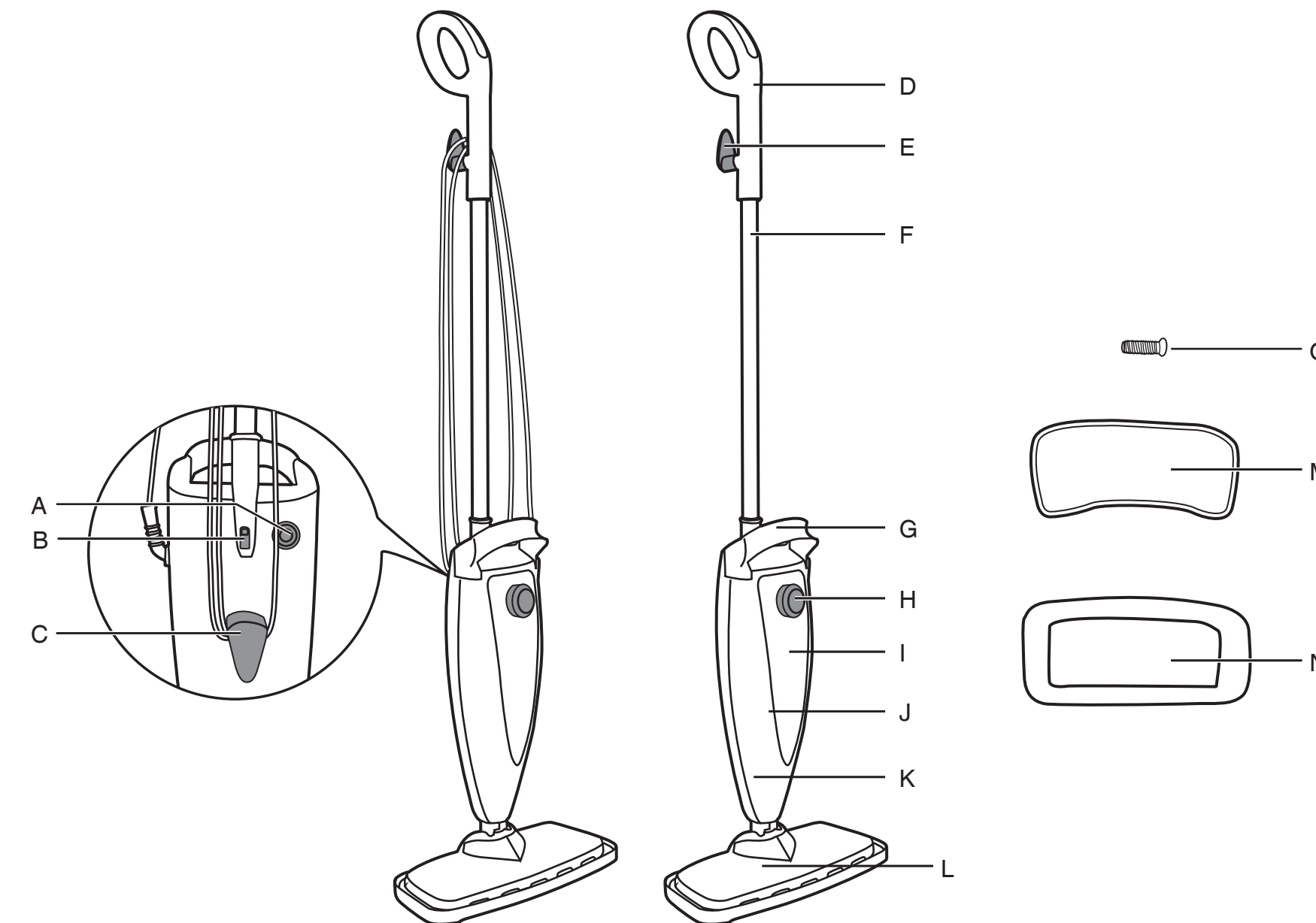
# HOOVER

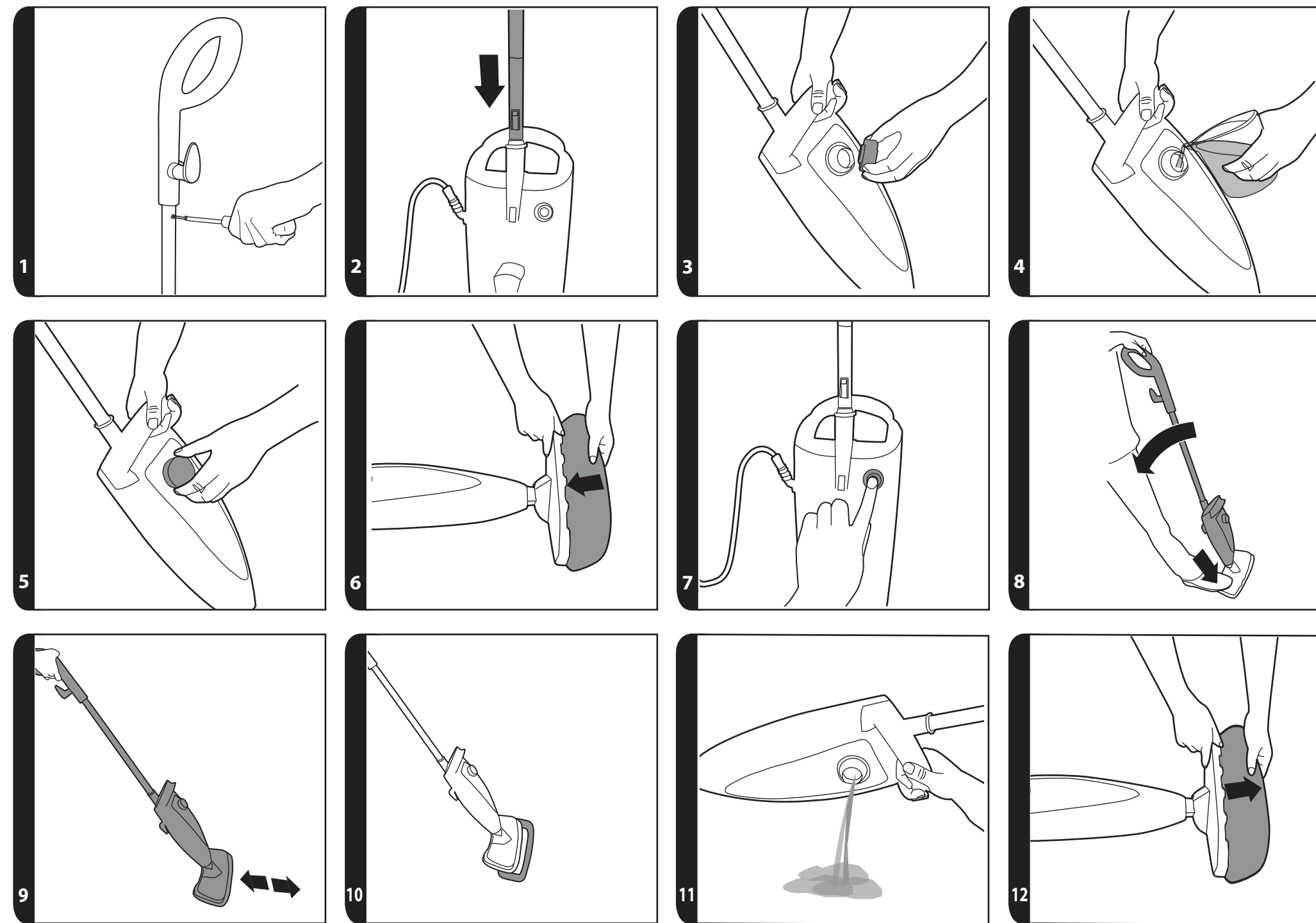


PRINTED IN P.R.C.  
48008781/03



USER MANUAL






## IMPORTANT SAFETY REMINDERS

This cleaner should only be used for domestic cleaning, as described in this user guide. Please ensure that this guide is fully understood before operating the appliance. Use only attachments recommended or supplied by Hoover.

When using cleaning tools ensure to always steady the product with your other hand. This will ensure the product does not fall while in use.

**WARNING:** Danger of scalding.  This product is very hot when used. Avoid any contact with steam.

**WARNING:** Electricity can be extremely dangerous. This appliance must be earthed. This plug is fitted with a 13 Amp fuse (UK only).

**IMPORTANT:** The wires in the mains power lead are coloured in accordance with the following code: **Blue – Neutral** **Brown – Live**

**AFTER USE:** Switch the cleaner off and remove the plug from the electricity supply. Always switch off and remove the plug before cleaning the appliance or attempting any maintenance task.

### SAFETY WITH CHILDREN, ELDERLY OR THE INFIRM:

This appliance can be used by children aged from 8 years and above and persons with reduced physical, sensory or mental capabilities or lack of experience and knowledge if they have been given supervision or instruction concerning use of the appliance in a safe way and understand the hazards involved. Children shall not play with the appliance. Cleaning and user maintenance shall not be made by children without supervision.

**HOOVER SERVICE:** To ensure the continued safe and efficient operation of this appliance we recommend that any servicing or repairs are only carried out by an authorised Hoover service engineer.

## IT IS IMPORTANT THAT YOU DO NOT

- The filling aperture must not be opened in use
- Leave the cleaner unattended while switched on.
- Unplug by pulling on the cord.
- Handle the plug or product with wet hands.
- Use detergents or liquids other than water inside the product.
- Direct steam towards equipment containing electrical components, such as the interior of ovens.
- Put the cleaner in water or other liquids.
- Position the cleaner above you when cleaning the stairs.
- Use your cleaner out of doors.
- Spray with or pick up flammable liquids, cleaning fluids, aerosols or their vapours as this may cause risk of fire / explosion.
- Stand on or wrap the power cord around arms or legs when using the cleaner.
- Use the appliance to clean or direct steam towards people, animals or plants.
- Continue to use your cleaner if it appears to be faulty. If the power cord is damaged stop using the cleaner IMMEDIATELY. To avoid a safety hazard, an authorised Hoover service engineer must replace the power cord.

## GETTING TO KNOW YOUR CLEANER

- A. On/Off Switch
- B. Handle Release Button
- C. Lower cord Clip
- D. Handle
- E. Upper Cord Clip
- F. Handle Pole
- G. Carry Handle
- H. Water Tank Cap
- I. Clean Water Tank
- J. Power Lamp (inside)
- K. Cleaner Main Body
- L. Floor Head
- M. Textile Pad
- N. Carpet Glider
- O. Screw

## ASSEMBLING YOUR CLEANER

Remove all components from the packaging.

1. Insert the screw into the handle and tight it. [1]
2. Insert the handle into the cleaner main body until it locks into position. [2]

## USING YOUR CLEANER

### BEFORE YOU BEGIN CLEANING

1. Remove the clean water tank cap from the cleaner main body. [3]
2. Fill the clean water tank with cold tap water. [4] Do not add any chemicals, detergents or perfumes to the clean water tank.
3. Re-fit the tank cap and ensure good sealing. [5]
4. Attach a textile pad to the base of the floor head. [6]

**IMPORTANT:** Always unplug the cleaner when adding water or changing a textile pad.  
**NOTE:** Wash the textile pad prior to use to remove any lint.

### STEAM CLEANING HARD FLOORS

**NOTE:** Always sweep or vacuum the floor prior to use to remove any loose dirt or debris.  
**IMPORTANT:** Do not use the cleaner without a textile pad attached to the floor head.

**NOTE:** Do not use the carpet glider when cleaning hard floors.

1. Plug the steam cleaner into the main power and switch on the product. The power lamp will illuminate after 30 seconds. [7]

2. To produce steam recline the cleaner by placing a foot on the floor head and lowering the main body towards the floor. [8]
3. Move the cleaner slowly backwards and forwards paying particular attention to high traffic areas. [9]

## REFRESHING CARPETS

**NOTE:** Always sweep or vacuum the floor prior to use to remove any loose dirt or debris.

**IMPORTANT:** Do not use the cleaner without a textile pad attached to the floor head.

1. Attach the carpet glider to the floor head. [10]
2. Plug the steam cleaner into the main power. The power lamp will illuminate after 30 seconds.
3. To produce steam recline the cleaner by placing a foot on the floor head and lowering the main body towards the floor. [8]
4. Move the cleaner slowly backwards and forwards paying particular attention to high traffic areas. [9]

## CLEANER MAINTENANCE

**IMPORTANT:** Always ensure the cleaner has fully cooled down before performing any maintenance tasks.

### Empty the water tank

1. Unplug the cleaner from the main power and ensure the unit has cooled.
2. Remove the water tank cap, pull off directly. [3]
3. Empty any excess water from the tank. [11] Replace the water tank cap [5].

### Removing and cleaning the textile pad

1. Unplug the cleaner from the main power and ensure the unit has cooled.
2. If necessary remove the carpet glider, then peel the textile pad from the floor base. [12]
3. Wash the textile pad in a washing machine with a mild detergent at max temperature 40°C.

**IMPORTANT:** Do not use bleach or fabric softener when washing the textile pad.

### Storage of appliance

Store the appliance in a dry area.

**NOTE:** This appliance will not stand alone with the Carpet Glider fitted, please ensure removal before storage.

## TROUBLE SHOOTING

Should you have a problem with the product, complete this simple user checklist before calling your local Hoover service.

The steam stick will not switch on.

- Check the unit is plugged in.
- Check the power cord

The steam stick is not producing steam.

- There may be no water in the clean water tank.
- You may not wait for enough time (30 seconds) when switch on.
- Steam cleaner may not be reclined; it doesn't produce steam in upright position.

The textile pad won't pick up dirt.

- The cleaning pad may already be saturated with dirt and needs to be washed. Refer to the Maintenance section.

## CLEANING FAQs

**When is Steam Express ready?** Approximately 30 seconds after switch on.

**Can I use Steam Express on all floor surfaces?** On all hard floors like marble, ceramic, stone, linoleum, sealed hardwood floors and parquet.

**Does Steam Express emit steam automatically? yes, Recline the cleaner by placing a foot on the floor head then the steam will emit automatically.**

**Can I use it vertically?** No, Steam Express can be used only horizontally.

**Can I put detergents or other chemicals inside the tank?** No, you would damage the product.

**What if in the city where I live the water is very hard?** You can use filtered water. If you find very weak steam, check steam orifice, you can descale it by inserting small tools into steam orifice if necessary.

**How long will one tank of water last before needing to be refilled?** Approximately 20 minutes if you use steam continuously.

**Is the mop washable?** Yes, it can be washed by hand or in the washing machine with a mild detergent at max temperature 40°C. Do not use bleach or fabric softener.

**How often should I replace the mop?** It depends on different factors above all how hard the floor is. The best way to understand when to change the mop is when the mop is still dirty after having washed it or if you notice that it doesn't perform like before.

## IMPORTANT INFORMATION

### Hoover spares and Consumables

Always replace parts with genuine Hoover spares. These are available from your local Hoover dealer or direct from Hoover. When ordering parts always quote your model number.

#### Consumables

Textile Pad: AC25 (35601390)

**Tel.: 08443 712 758**

**[www.hooverspares.com](http://www.hooverspares.com)**

#### Hoover Customer Helpline

**Tel.: 08444 995 599**

**Email: [customer.services@hoovercandy.com](mailto:customer.services@hoovercandy.com)**

Hoover have a computerised nationwide service network of over 500 engineers who will quickly respond to your call and guarantee your repair for 12 months.

#### Quality

Hoover's factories have been independently assessed for quality. Our products are made using a quality system which meets the requirements of ISO 9001

#### The Environment:

The symbol on the product indicates that this product may not be treated as household waste. Instead it shall be handed over to the appliance collection point for recycling of electrical and electronic equipment. Disposal must be carried out in accordance with the local environmental regulations for waste disposal. For more detailed information about treatment, recovery and recycling of this product, please contact your local city office, your household waste disposal service or the shop where you purchased the product.



**CE** This product complies with the European Directives 2006/95/EC, 2004/108/EC and 2011/65/EC.

Hoover Limited Pentrebach, Merthyr Tydfil, Mid Glamorgan CF48 4TU, UK

#### Your Guarantee

The guarantee conditions for this appliance are as defined by our representative in the country in which it is sold. Details regarding these conditions can be obtained from the dealer from whom the appliance was purchased. The bill of sale or receipt must be produced when making any claim under the terms of this guarantee.

Subject to change without notice.