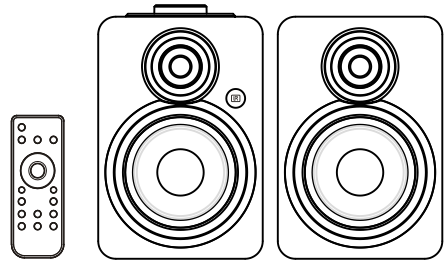


**Important**-please read these instructions fully before installing or using

these instructions contain important information which will help you get the best from appliance and ensure safe and correct installation, use and maintenance.  
if you need help or have damaged or missing parts, call the Customer Helpline: 0870 600 3030

# Contents

<b>Safety Information</b>	<b>2</b>
Safety precautions	2
UK Mains plug information	2
<b>Functions &amp; Controls</b>	<b>3</b>
Accessories included	3
Features and controls	3
Remote controls	3
<b>Installing for the machine</b>	<b>4</b>
Installing the speaker wire to the speaker terminals	4
Putting the batteries into the remote control unit	4
Universal Dock adapter connection	4
<b>Operation</b>	<b>5</b>
Starting the unit	5
Lightning(with a 8-pin connection)	5 - 6
Product Operation	5 - 6
Using the USB port	6
Aux in operation	6
Other function	6
<b>Care &amp; Maintenance</b>	<b>7</b>
<b>Troubleshooting</b>	<b>7</b>
<b>Specification</b>	<b>8</b>
<b>Disposal information</b>	<b>8</b>
<b>Guarantee</b>	<b>9</b>



### Product Codes

NE-8303



## Safety Information

**Important** – Please read these instructions fully before installation

### Safety Precautions

**CAUTION: TO REDUCE THE RISK OF ELECTRIC SHOCK, DO NOT REMOVE ANY COVER. NO USER-SERVICEABLE PARTS INSIDE, REFER ANY SERVICING TO QUALIFIED SERVICE PERSONNEL.**

- Please read this owner's guide
- Please take the time to follow the instructions in this owner's guide carefully. It will help you set up and operate your system properly and enjoy all of its advanced features.
- Please save this owner's guide for future reference.
- The product label is located on the back of the product.
- This product must be used indoors. It is neither designed nor tested for use outdoors, in recreation vehicles, or on boats.
- Heed all warnings - on the product and in the owner's guide.
- Do not use this apparatus near water or moisture. Do not use this product near a bathtub, washbowl, kitchen sink, and laundry tub, in a wet basement, near a swimming pool, or anywhere else that water or moisture is present.
- Only use attachments/accessories specified by the manufacturer.
- Unplug this apparatus during lightning storms or when unused for long periods of time - to prevent damage to this product.
- Refer all servicing to qualified service personnel
- Servicing is required when the apparatus has been damaged in any way: such as liquid has been spilled or objects have fallen into the apparatus; the apparatus has been exposed to rain or moisture, does not operate normally, or has been dropped - Do not attempt to service this product yourself. Opening or removing covers may expose you to dangerous voltages or other hazards.
- To prevent risk of fire or electric shock, avoid overloading wall outlets, extension cords, or integral convenience receptacles.
- Use proper power sources - Plug the product into a proper power source, as described in the operating instructions or as marked on the product.
- The mains plug is used as the disconnect device, the disconnect device shall remain readily accessible

### Safety Precautions



#### CAUTION

**RISK OF ELECTRIC SHOCK!  
DO NOT OPEN!**



This symbol means that this unit is double insulated. An earth connection is not required.

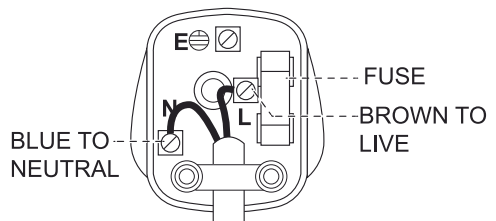
### UK Mains plug information

For your convenience a mains plug with a fuse (3 Amp) has been fitted to this appliance.

For your safety please observe the following information.

- The unit is designed to operate on AC mains supply 230 volts, 50 Hz.
- The wires in the mains lead are coloured in accordance with the following code:
 

<b>BLUE</b>	- NEUTRAL
<b>BROWN</b>	- LIVE
- Under no circumstances should Neutral or Live wires be connected to the 'E' (Earth) terminal.



## Functions & Controls

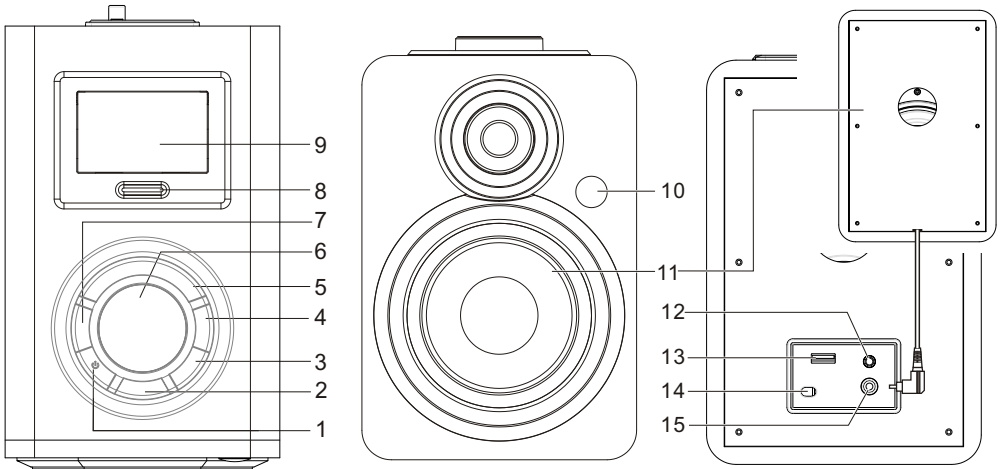
If you have damaged or missing parts,  
call the Customer Helpline: 0870 600 3030

Please familiarize yourself with the parts and accessories listed below

### Accessories included

• 1 x Main unit • 1 x Speakers • 1 x Remote • 1 x Instruction manual

### Features and controls



1. STANDBY/ON BUTTON
2. iPhone/USB/AUX LED INDICATOR
3. PLAY/PAUSE BUTTON
4. SKIP/SEARCH UP BUTTON
5. MODE BUTTON
6. VOLUME KNOB

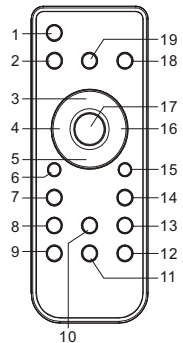
7. SKIP/SEARCH DOWN BUTTON
8. DOCKING COVER OPEN/CLOSE BUTTON
9. DOCKING COVER
10. IR SENSOR

11. SPEAKER
12. LINE IN JACK
13. USB PORT
14. AC COAD
15. SPEAKER OUT JACK

### Remote controls

1. STANDBY/ON BUTTON
2. MODE BUTTON
3. ARROW UP BUTTON
4. SKIP/SEARCH DOWN BUTTON
5. ARROW DOWN BUTTON
6. REPEAT BUTTON
7. EQ FLAT BUTTON
8. EQ CLASSIC BUTTON
9. MUTE BUTTON

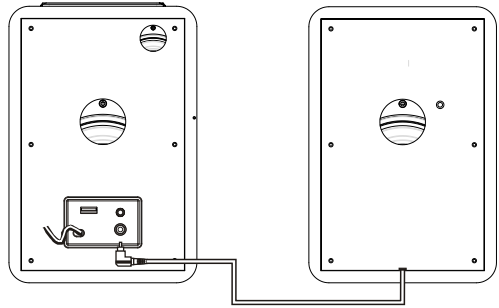
10. EQ ROCK BUTTON
11. VOLUME “-” BUTTON
12. VOLUME “+” BUTTON
13. EQ POP BUTTON
14. EQ JAZZ BUTTON
15. RANDOM BUTTON
16. SKIP/SEARCH UP BUTTON
17. SELECT BUTTON
18. PLAY/PAUSE BUTTON
19. MENU BUTTON



## Installing for the machine

### Installing the speaker wire to the speaker terminals

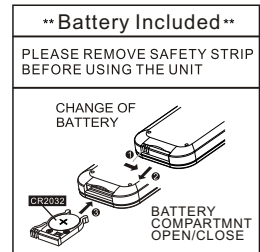
- 1. Speakers Connection**  
Extend the SPEAKER WIRES and connect them to the SPEAKER TERMINALS.
- 2. Power Cord Connection**  
Before using , connect the AC Power Cord to the AC outlet . Standby indicator light.



### Putting the batteries into the remote control unit

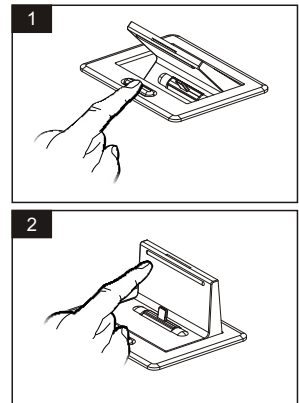
1. Press the battery compartment gently according to the direction indicated in the illustration.
2. Slide to open the battery compartment.
3. Insert the supplied CR2032 battery into the compartment according to the polarity markings ("+" and "-") inside the compartment and on the battery. Replace the battery compartment until it clicks.

**NOTE:** Remove the battery from the remote control if not in use for long period of time. Replace with new battery when the battery become weak, otherwise the remote control will not function properly.



### Universal Dock adapter connection

1. Press OPEN/CLOSE button to release Docking cover.
2. Push the cover back forward until it snaps on.



## Operation

### Starting the Unit

When you first plug the unit into the AC outlet, the unit will be in standby mode, the standby LED indicator is red. You can press the STANDBY/ON button on the unit ( or on the remote control ) to switch the unit ON. the iPhone mode will automatically be selected and iPhone indicator will be red and STANDBY/ON indicator will be off. To completely disconnect the speaker from the power supply and when the speaker is not used for a longer period of time, remove the AC plug from the power outlet.

### Lightning(with a 8-pin connection) Product Operation

To begin lightning product playback, firstly press the OPEN/CLOSE button on the top of speaker, the Docking Cover will be lift up, slightly push the cover back forward until it snaps on. If you do not use the unit, please do the opposite way, press again OPEN/CLOSE button on the top of speaker, push the Docking Cover down until it snaps on.

#### Ready to playback Music via lightning docking

1. Insert the iPod/iPhone/iPad into the iPod/iPhone/iPad dock firmly. Press the PLAY/PAUSE button using the usual manner.
2. Rotate the VOLUME knob or press the Volume +/- key at the remote control to your desired the volume level.
3. Additionally you can set the equalizer (FLAT/ROCK/CLASSIC/JAZZ/POP) on remote control in order to reach the perfect sound.
4. To pause playback, press the PLAY/PAUSE button. To resume playback, press this button once again.
5. To skip to the previous or next song, press the SKIP/SEARCH UP or DOWN button.
6. To access the lightning product menu, press the MENU button on the remote control once.
7. Navigate the lightning product menu in the usual manner using the ARROW DOWN or UP buttons to move up or down the current menu, press the SELECT button to select the desired song.
8. Press the MENU button again to the previous menu.

Note: Steps 6-8 "MENU" & "ARROW DOWN/UP" function is not available for iPad.



#### Ready to playback Music via iAP-over-USB

A USB port has been provided at the rear of the speaker is for iPod/iPhone with a 30-pin connection product can be connected and amplified.

1. Connect the speaker using a USB charging cable with 30-pin connection (not included, please use cable provided your iPod/iPhone/iPad device, if any) into the USB at the rear of speaker. And 30-pin connection is inserted into your iPod/iPhone/iPad firmly.
2. Turn on the speaker as described above. And then press the MODE button repeatedly and select the USB mode. the USB LED indicator is red.
3. Follow the steps as described how to performance lightning product above.

#### REPEAT PLAY FUNCTION (via lightning docking & iAP-over-USB only)


This function allows the same track or all tracks to be played repeatedly.

1. To repeat the SAME track, press the REPEAT button on the remote control ONCE during play,  will appear in the iPod/iPhone/iPad display.
2. To repeat ALL tracks, press the REPEAT button again,  will appear all tracks in the folder will be played continuously.
3. To stop the repeat function, press the REPEAT button until the repeat indicator disappears from the display.

Note: 1. iPod touch only versions 1.1.4 or above can support the REPEAT function.

2. When the iPad/iPod touch& iPhone screen has been locked, above operation are still available.

#### RANDOM PLAY FUNCTION (via lightning docking & iAP-over-USB only)

This function allows the unit to randomly play tracks, Just simply press RANDOM button on the remote control and the random logo  will appear iPod/iPhone/iPad display.

Note: iPod touch only versions 1.1.4 or above can support the RANDOM function.

#### Charging up your iPod/iPhone/iPad:

You can charge your iPod/iPhone/iPad either smart phone via the docking tray or USB (the USB charging cable is not included, please use cable provided your device, if any) in either standby or under operation, iPod/iPhone/iPad will be automatically charged when it is docked.

## Operation

### Lightning(with a 8-pin connection) Product Operation

Note: 1. During operation the iPod/iPhone/iPad controls can be used in the normal manner.

2. It is advisable to avoid charging the iPod/iPhone/iPad when listening to the radio as it may cause deterioration in listening quality.

### Using the USB port

The appliance is suitable to play MP3 and WMA files stored on USB devices (version 1.1 and 2.0) with a maximum of 32GB memory. 'Dual voltage MMC', 'MMC-Plus' cards and 'DRM' protected WMA files are not supported.

1. Turn on the speaker as described above, then press the MODE button repeatedly and select the USB mode. the USB LED indicator is red.
2. Insert the USB device into the USB port, it will start to play the first track automatically after a few seconds. To pause playback, press the PLAY/PAUSE button. To resume playback, press this button once again, adjust the volume to the desired level turning the VOLUME (+ or ) knob or pressing Volume +/- key at the remote control.

### AUX in for playback of other audio device

You can connect the audio output of external device such as an MP3 player to the speaker to listen to the sound of that device through this speaker.

1. To connect the external device please use a standard stereo audio cable(3.5mm to 3.5mm plugs) (not included) to connect the headphone out or audio line out of the external device to the Aux input socket of the speaker.
2. Switch the speaker into AUX mode pressing the MODE button the function panel or the remote control. AUX mode is selected when the AUX In LED indicator is Red.
3. Switch the external device (e.g. MP3 Player) on.
4. Start playback of the external device and set a desired volume on the speaker and external device.
5. Remember to switch off the speaker when you are finished using the external device.

#### Power saving:

This unit also offers an economy mode that helps you save power.

1. If the unit is in AUX mode and idle for 3-4 hours, the unit will automatically switch to Standby mode.
2. If the unit is left in iPhone & USB mode(is not connected to any device), and idle for 15 minutes, the unit will switch to standby mode automatically.

### Other function

#### EQ CONTROL(on the remote control)

EQ shows the present sound tone. When you press the (FLAT, CLASSIC, ROCK, POP, JAZZ) button.

#### MUTE FUNCTION (remote control only)

Press the **MUTE** button on the remote control to stop the sound from the speakers temporarily.

To cancel mute and restore the sound, press the **MUTE** button again or adjust the **VOLUME** button and the **STANDBY/ON** LED indicator will flash red color.

## Care & Maintenance



### Important:

Always unplug the appliance from the power socket during cleaning and maintenance.

- Never use any sharp instruments or abrasive substances, soap, household cleaner, detergent or wax polish for cleaning.
- Clean the external surfaces with a damp soft cloth only. Never use abrasive products or solvents as it may damage the appliance.

## Troubleshooting

In the unlikely event of difficulties with your appliance please follow the trouble shooting guide below. If the problem persists, contact the retailer if the machine is still under guarantee. Customer helpline: 0870 600 3030

Problem	Reason(s)	Solution(s)
No Power	<ul style="list-style-type: none"><li>• Power cable not connected to wall socket</li><li>• Power socket is not switched on</li></ul>	<ul style="list-style-type: none"><li>• Make sure the plug is connected</li><li>• Switch the power on</li></ul>
No Sound USB	<ul style="list-style-type: none"><li>• Volume is too low</li><li>• 3.5mm audio cable is connected to the AUX input (5).</li></ul>	<ul style="list-style-type: none"><li>• Increase the volume</li><li>• Remove the cable to allow non AUX playback.</li></ul>
No Sound from AUX input	<ul style="list-style-type: none"><li>• AUX source volume is too low</li></ul>	<ul style="list-style-type: none"><li>• Increase the output volume of the AUX source.</li></ul>
Sound is distorted Sound is distorted from AUX input	<ul style="list-style-type: none"><li>• Volume is too high</li><li>• AUX source volume is too high</li></ul>	<ul style="list-style-type: none"><li>• Reduce the volume</li><li>• Reduce the output volume of the AUX source.</li></ul>



## Specification

General	
Power	AC: 220-240V ~ 50Hz
Dimensions	Approx. 140 (W) x 230 (D) x 214 (H) mm (UNIT) Approx. 140 (W) x 230 (D) x 206 (H) mm (SPEAKER)
Audio	
Output Power	10W x 2 (RMS)
Speaker impedance	4 ohms
USB Flash Drive	
Size	Up to 32GB
File system	FAT16, FAT32
USB Output Power :	5.0V/1A

We apologise for any inconvenience caused by any minor inconsistencies in these instructions, which may occur as a result of product improvements and development.



This appliance complies with the following EEC directives: 2006/95/EEC Low voltage directive /2004/108/EEC EMC directive

## Disposal Information



The symbol on the product or its packaging indicates that this product may not be treated as household waste. Instead it should be handed over to the applicable collection point for the recycling of electrical and electronic equipment. By ensuring this product is disposed of correctly, you will help prevent potential negative consequences for the environment and human health, which could otherwise be caused by inappropriate waste handling of this product. For more detailed information about recycling this product, please contact your local council office, your household waste disposal service or the shop where the product was purchased.



## **PRODUCT GUARANTEE**

This product is guaranteed against manufacturing defects for a period of



Year

This product is guaranteed for twelve months from the date of original purchase.

Any defect that arises due to faulty materials or workmanship will either be replaced, refunded or repaired free of charge where possible during this period by the dealer from whom you purchased the unit.

The guarantee is subject to the following provisions:

- The guarantee does not cover accidental damage, misuse, cabinet parts, knobs or consumable items.
- The product must be correctly installed and operated in accordance with the instructions contained in this manual.
- It must be used solely for domestic purpose.
- The guarantee will be rendered invalidated if the product is re-sold or has been damaged by inexpert repair.
- Specifications are subject to change without notice.
- The manufacturer disclaims any liability for the incidental or consequential damages.
- The guarantee is in addition to, and does not diminish your statutory or legal rights.

Guarantor: Argos Limited  
489 - 499 Avebury Boulevard  
Central Milton Keynes  
MK9 2NW