

Reebok

GB

i run se



ST-MNL-T1.6SE-RFE-GB-01

Dear Customer,

We are pleased, that you have chosen a Reebok Fitness Equipment. This quality product has been designed for in-home use and has been tested and certified according to the European Norm EN 957-1/6. Please carefully read the instructions prior to assembly and first use and be sure to keep the instructions for reference and maintenance.

We wish you lots of success and fun while training,

Your Reebok – Team

Warranty

Limited Warranty – UK Only

RFE International Ltd. (RFE), warrants this product to be free from defects in workmanship and material, under normal use and service conditions, for a period of (2) two years for parts and labour. This warranty extends only to the original purchaser. RFE's obligation under this warranty is limited to replacing or repairing, at RFE's option, the product through one of its authorized service centers. All repairs for which warranty claims are made must be pre-authorized by RFE. This warranty does not extend to any product or damage to the product caused by or attributed to freight damage, abuse, misuse, improper or abnormal usage or repairs not provided by a RFE authorized service centre, products used for commercial or rental purposes, or products used as store display models. No other warranty beyond that specifically set forth above is authorized by RFE.

RFE is not responsible or liable for indirect, special or consequential damages arising out of or in connection with the use of performance of the product or damages with respect to any economic loss, loss of property, loss of revenues or profits, loss of enjoyment or use, costs of removal, installation or other consequential damages of whatsoever nature.

The warranty extended hereunder is in lieu of any and all other warranties and any implied warranties of merchantability or fitness for a particular purpose is limited in its scope and duration to the terms set forth herein.

This warranty gives you specific legal rights

Customer Service

To best possible support you in the case of problems with your product, we would ask you to please quote the product Model Name and Serial Number.

These can be found on the sticker underside your product.

Modelname:

Serialnumber:

Waste Disposal



Reebok products are recyclable. At the end of its useful life please dispose of this article correctly and safely (local refuse sites).

Contact

RFE INTERNATIONAL LTD

THE PERFORMANCE CENTRE

MAIDSTONE RD

KINGSTON

MILTON KEYNES MK10 0BD

head office tel: 0044 (0) 1908 793020

head office fax: 0044 (0) 1908 793021

e-mail: info@rfeinternational.com

web: www.reebokfitness.co.uk

Technical support:

tel: 0044 (0) 800 440 2459

e-mail: techsupport@rfeinternational.com

Advice

The owner's manual is only for the customer reference. **Reebok** can not guarantee for mistakes occurring due to translation or change in technical specification of the product.

Precautions

Before assembling or using the treadmill, please read the following instructions carefully. They contain important information for use and maintenance of the equipment as well as for your personal safety. Keep these instructions in a safe place for maintenance purposes or for ordering spare parts.

- **Product-Scope:** This product is made for home use only and tested up to a maximum body weight of 100 kilograms.
- **Product-Performance:** This treadmill is tested to the European Standard EN 957-1/6 HB. The equipment is not suitable for therapeutic training.
- **Product-Scope: Noise compliance:** This treadmill meets the requirements of the noise pollution standards.
- **Product-Performance:** The noise creation of treadmill is under 70db.
- **Product-Maintenance:** For keeping the run quality use the provided silicon spray every month or after a working time of 100 kilometers between the belt and the running surface.
- **Product-Maintenance: Search for noisy parts:** If you should notice unusual noises, like grinding, clacking etc. try to locate it and have it repaired by a professional. Make sure the treadmill is not used until after repairs have been made.
- **Product-Feature:** The speed can be changed by the computer.
- **Use-Safety: The function of the immobilization method:** The purpose of immobilizing the treadmill is to prevent unauthorized use. This can be accomplished by removing the Safety Key from the console, unclipping it from the cord and putting it in a non-accessible place
- **Use-Safety: The emergency dismount:** Follow the steps listed below if you experience pain, feel faint or need to stop your treadmill in an emergency situation: 1. Grip handrails for support 2. Step onto the lateral platform 3. Pull the Safety key off the console.
- **Use-Safety: The function of the emergency stop:** The Safety Key functions as the emergency stop. In an emergency situation, remove the Safety Key from the console and the treadmill will come to a stop.

- **Use-Scope:** The exerciser may not be used by persons with a weight of over 100 kg.
- **Use-Scope:** This product is designed for the physical exercise by adults. Please ensure that children only use it under adult supervision
- **Use-Environment:** Ensure that those present are aware of possible hazards, e.g. movable parts during training.
- **Use-Environment:** Ensure that sufficient space is available to use the home exerciser with 2m long x 1m wide of clearance behind it and 1m of clearance for its flanks.
- **Use-Environment:** Place the home exerciser on an even, non-slippery surface.
- **Use-Environment:** Please ensure that liquids or perspiration never enter the electronic.

- Use-Environment: Keep the equipment indoors, away from moisture and dust. Do not put the equipment in a garage, covered patio or near water. If stored in this location your warranty will be affected.
- Use-Environment: The product is made for home use only. Warranty and manufacturer's liability do not extend to any product or damage to the product caused by commercial use.
- User-Health: Consult your physician before starting with any exercise programs to receive advice on the optimal training technique.
- User-Health: Incorrect/excessive training can cause health injuries.
- User-Health: If you feel sickness, chest pain, fits of dizziness or breathlessness during your training, stop training immediately and consult your physician.
- Product-Preparation: Ensure that training only starts after correct assembly, adjustment and inspection of the home exerciser.
- Product-Preparation: Follow the steps of the assembly instruction carefully.
- Product-Preparation: Only use suitable tools for assembly and ask for assistance if necessary.
- Product-Preparation: Only use original Reebok parts as delivered (see checklist).
- Product-Preparation: Tighten all adjustable parts to prevent sudden movement while training.
- Product-Preparation: We suggest using an equipment mat to prevent damage on the ground.
- Use-Instruction: Please follow the advice as per correct training technique as detailed in the instructions.
- Use-Instruction: Do not use the home exerciser without shoes or with loose fitting footwear.
Use-Safety: Be aware of the position and proper fixation of adjustable or moving parts while mounting or dismounting the home exerciser.
- Use-Safety: Allow the belt to fully stop before dismounting.
- Use-Safety: Pay attention: never insert any part of your body or clothes into the body of the treadmill while it is running or ready for use.
- Use-Safety: Attach the emergency stop cord to your clothing before starting the treadmill. The Treadmill has an emergency stop mechanism for your safety. Before starting your workout, fasten the cord of the safety key to your clothing. If the treadmill has been shut down by removing the safety key, restart it by reinserting the key. An automatic restart of the treadmill belt does not occur. An unmonitored use of the treadmill by other people can be prevented by removing the safety key and keeping it safely hidden. In case of any emergency, hold on tightly to the handrail or handle bar with both hands and leave the treadmill by means of the anti-slipping surface of the lateral platform. Activate the emergency stop mechanism (safety cut-out).
- Use-Safety: Please keep the safety key in a safe place and ensure that it is kept out of reach of children!
- Product-Power-Safety: The unit requires a power supply of 220V – 230V / 50Hz. It should be connected to a safety socket with a dedicated 10A fuse. Before powering on and using the unit confirm that the unit is plugged into the appropriate power supply (observe markings) has been connected properly.

- Product-Maintenance: If the equipment is in regular use, check all its components thoroughly every 1 – 2 months. Pay particular attention to the tightness of bolts and nuts. This applies especially to the securing bolts for saddle and handlebars.
- Product-Maintenance: Incorrect repairs and structural modifications (e.g. removal or replacement of original parts) may endanger the safety of the user.
- Product-Maintenance: Damaged components may endanger your safety or reduce the lifetime of the equipment. For this reason, worn or damaged parts should be replaced immediately and the user should refrain from using the equipment until this has been done.
- Product-Maintenance: Only use original Reebok replacement parts.
- Product-Maintenance: Do not under any circumstances carry out electrical repairs or alterations yourself. Always ensure that such work is done by a properly qualified electrician/mechanic or the advise of the Technical Support team is sought firstly
- Product-Maintenance: Disconnect the apparatus from the mains before doing repair, maintenance or cleaning work.

Check List

301



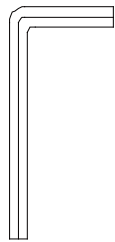
302



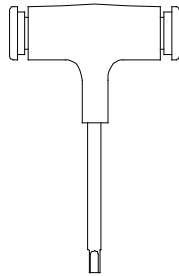
610



A



B



C



D

X1



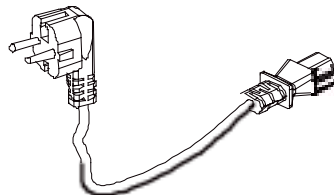
E

X1

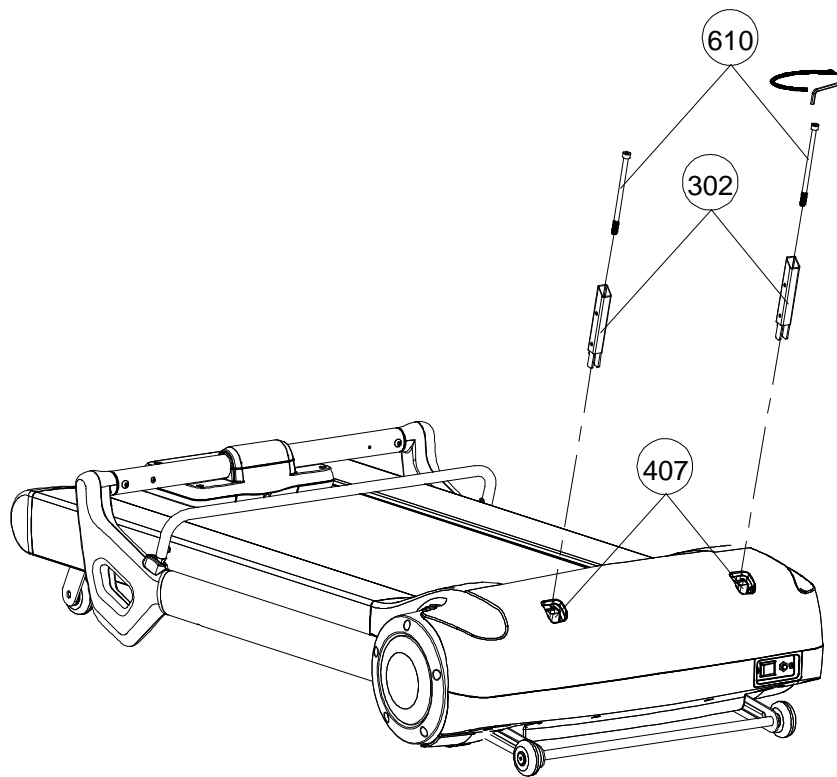


F

X1



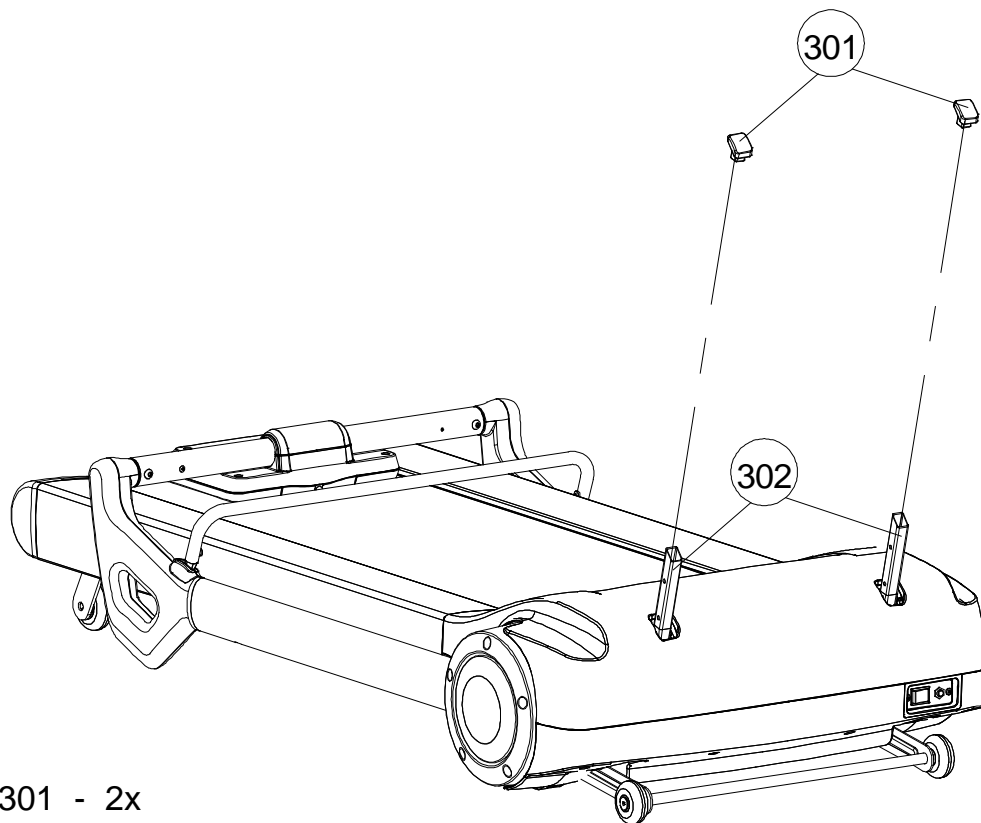
1.



610 - 2x

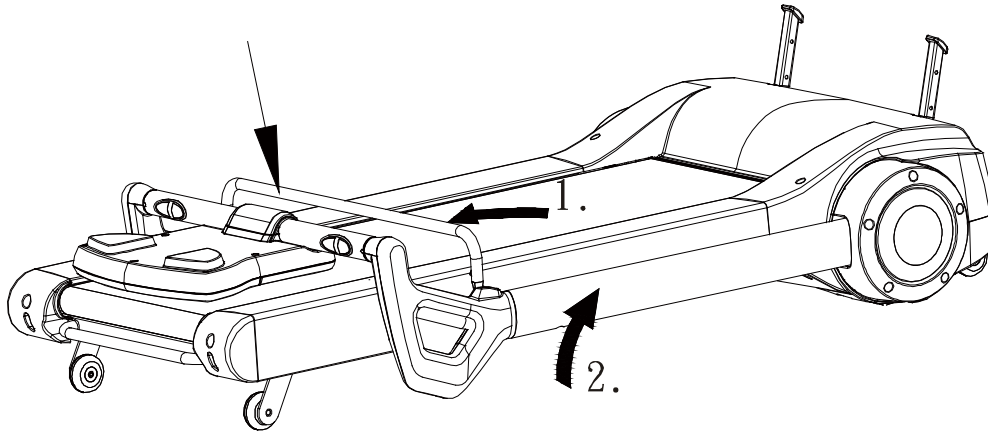
302 - 2x

2.

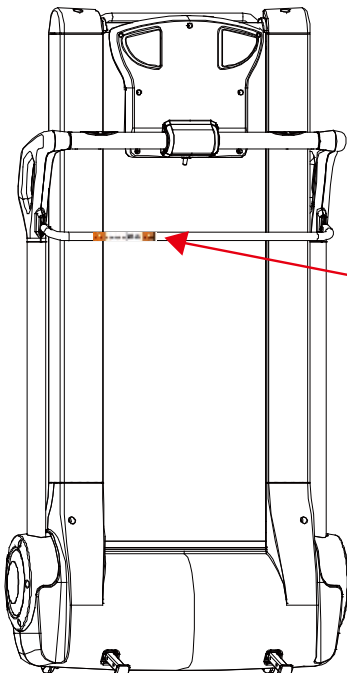
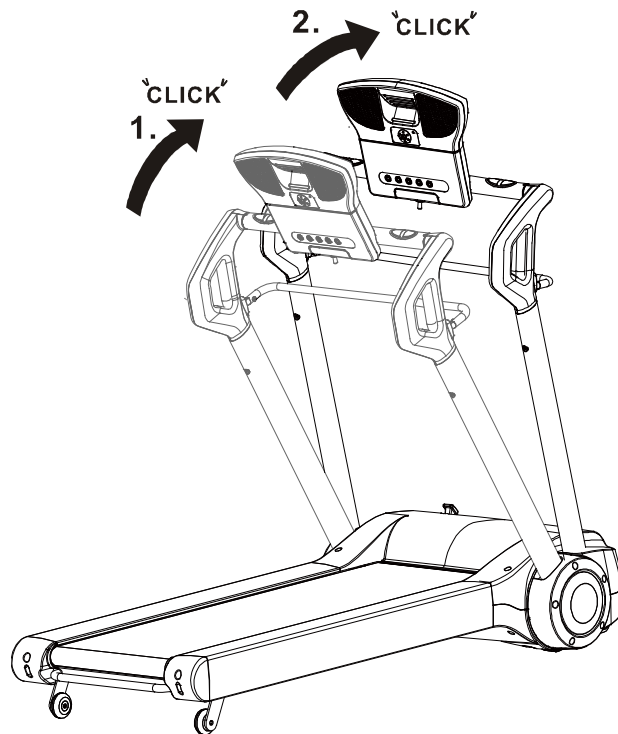


301 - 2x

3.

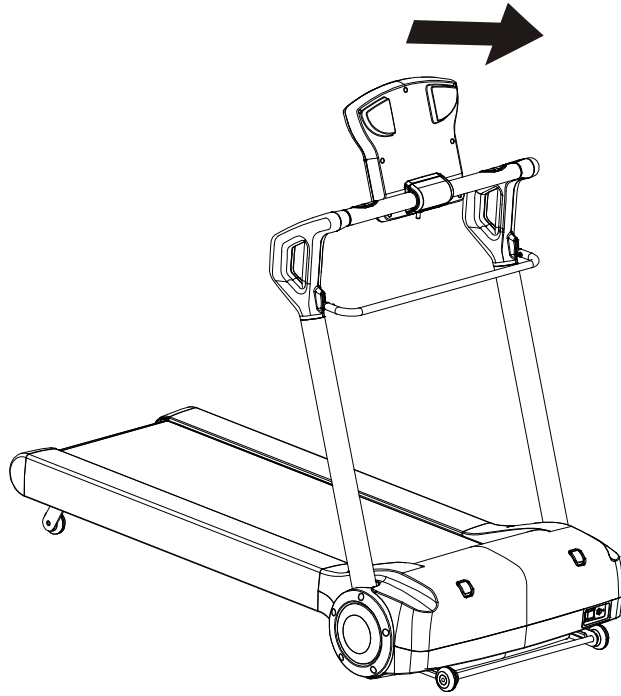


4.

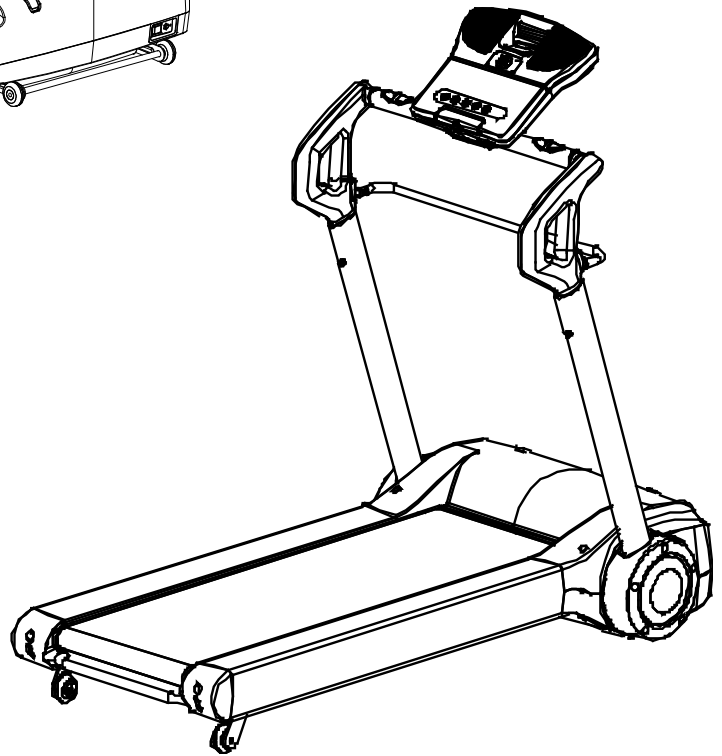


 WARNING	Confirm the Handbars rest their own position and are securely locked by first pulling back on them.		Vergewissern Sie sich, dass der Handgriff vollständig aufsteht und sicher verriegelt ist, bevor Sie ihn zum Laufen nutzen.	 ACHTUNG
--	---	---	--	--

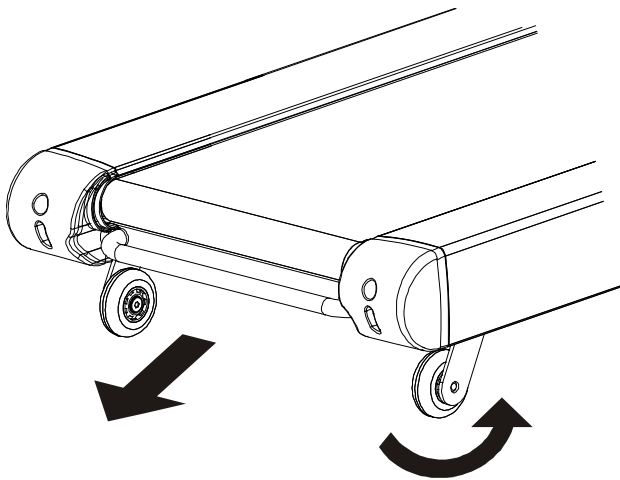
5.



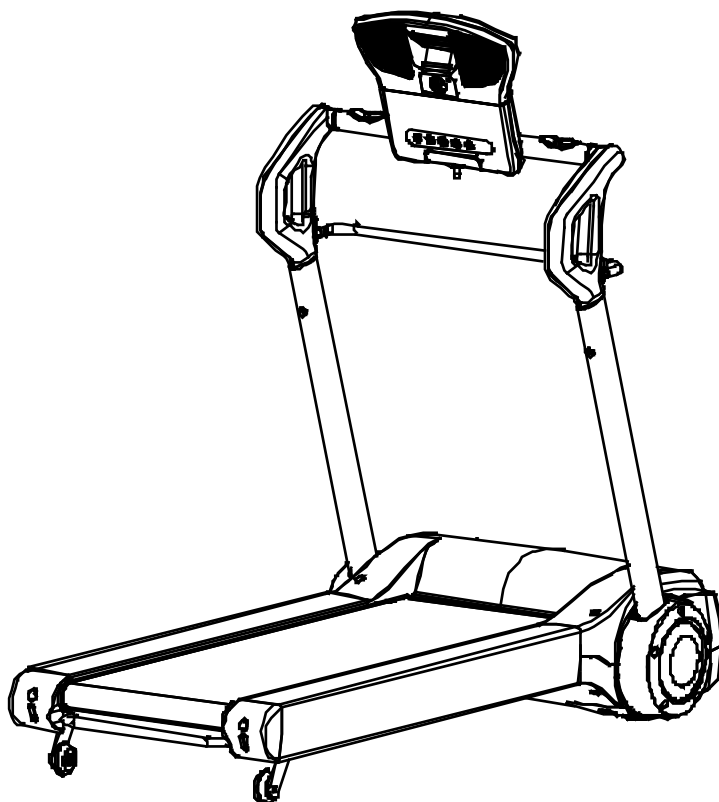
6.



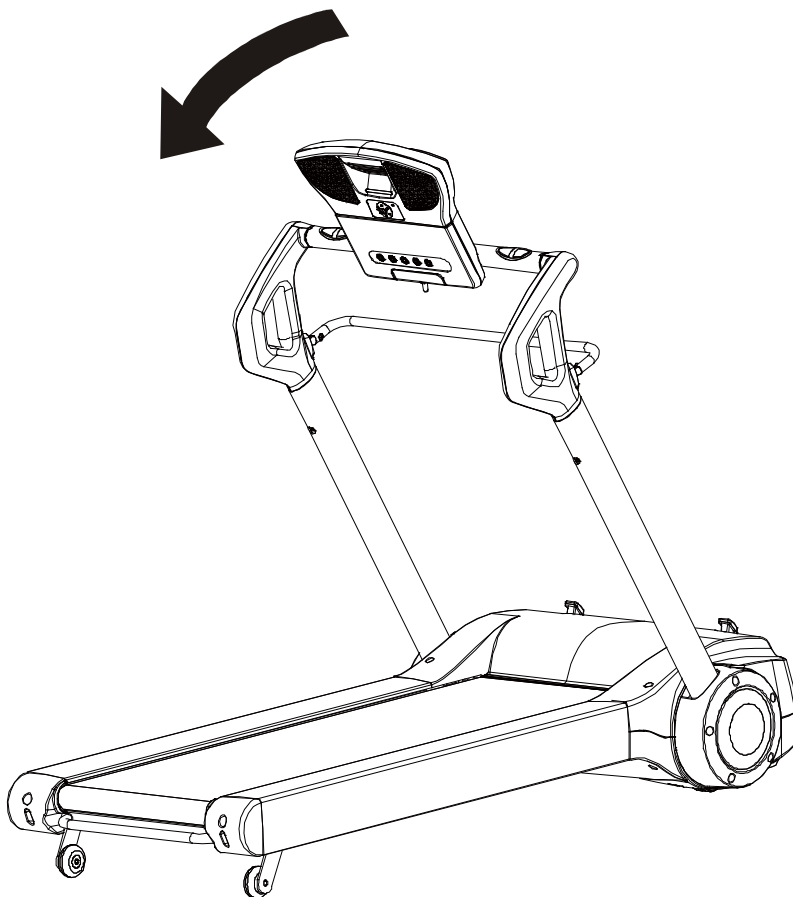
7.



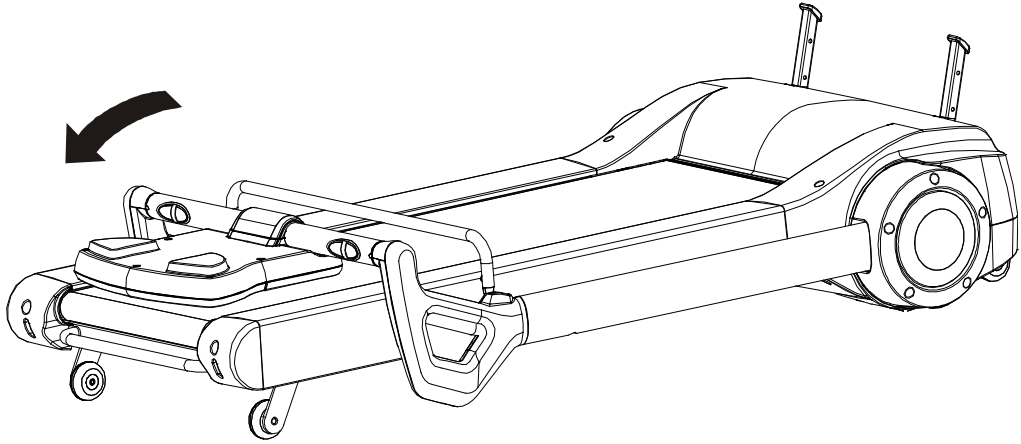
8.



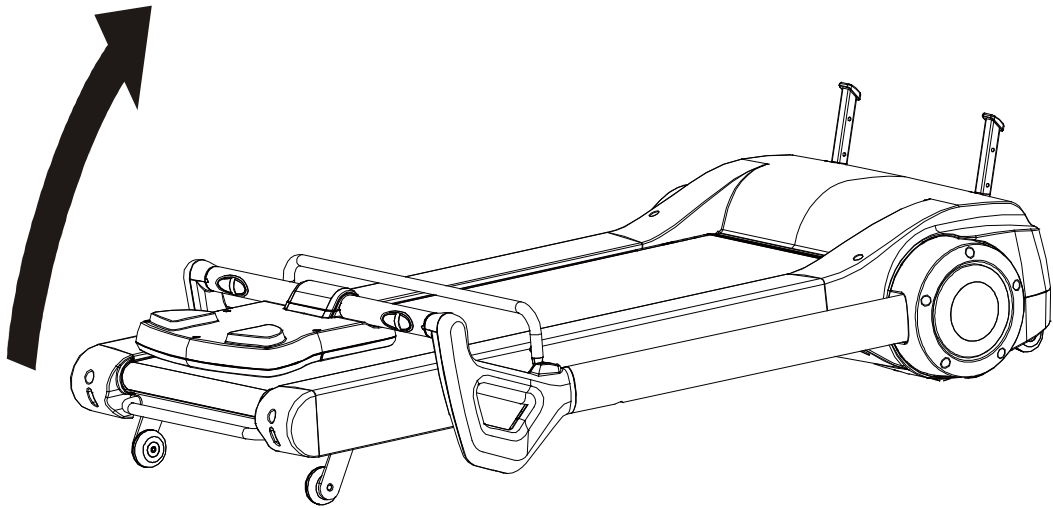
9.



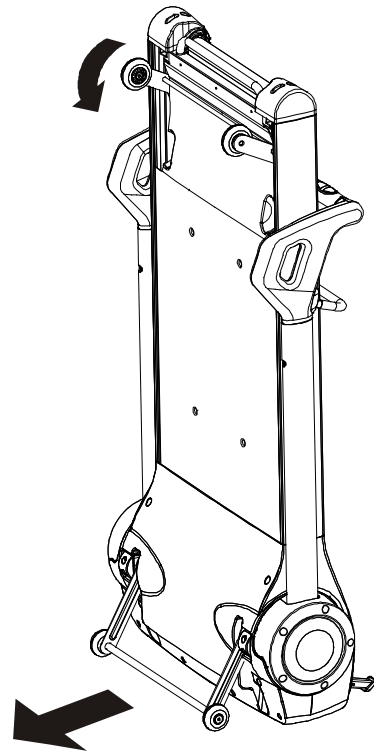
10.



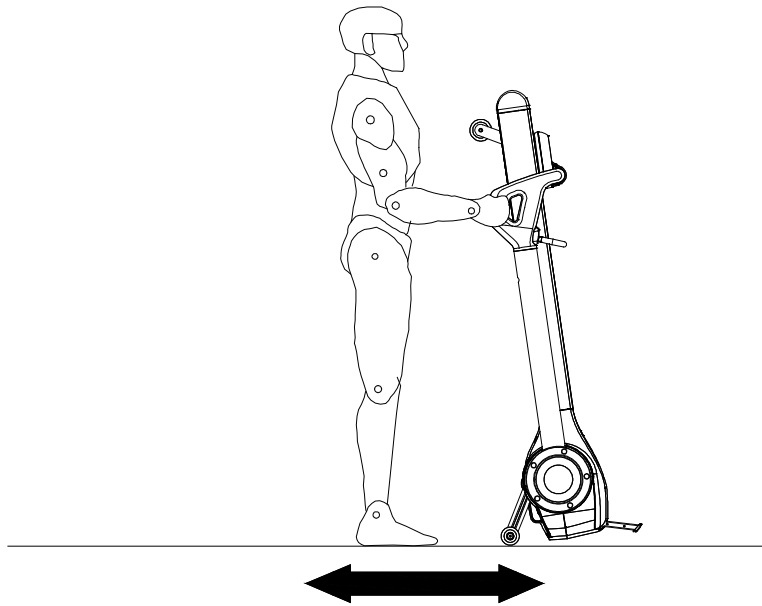
11.



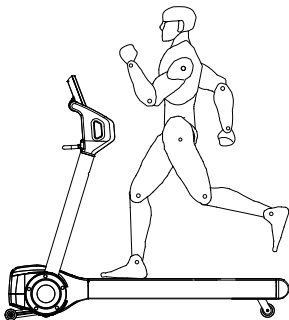
12.



Transport



Correct Use



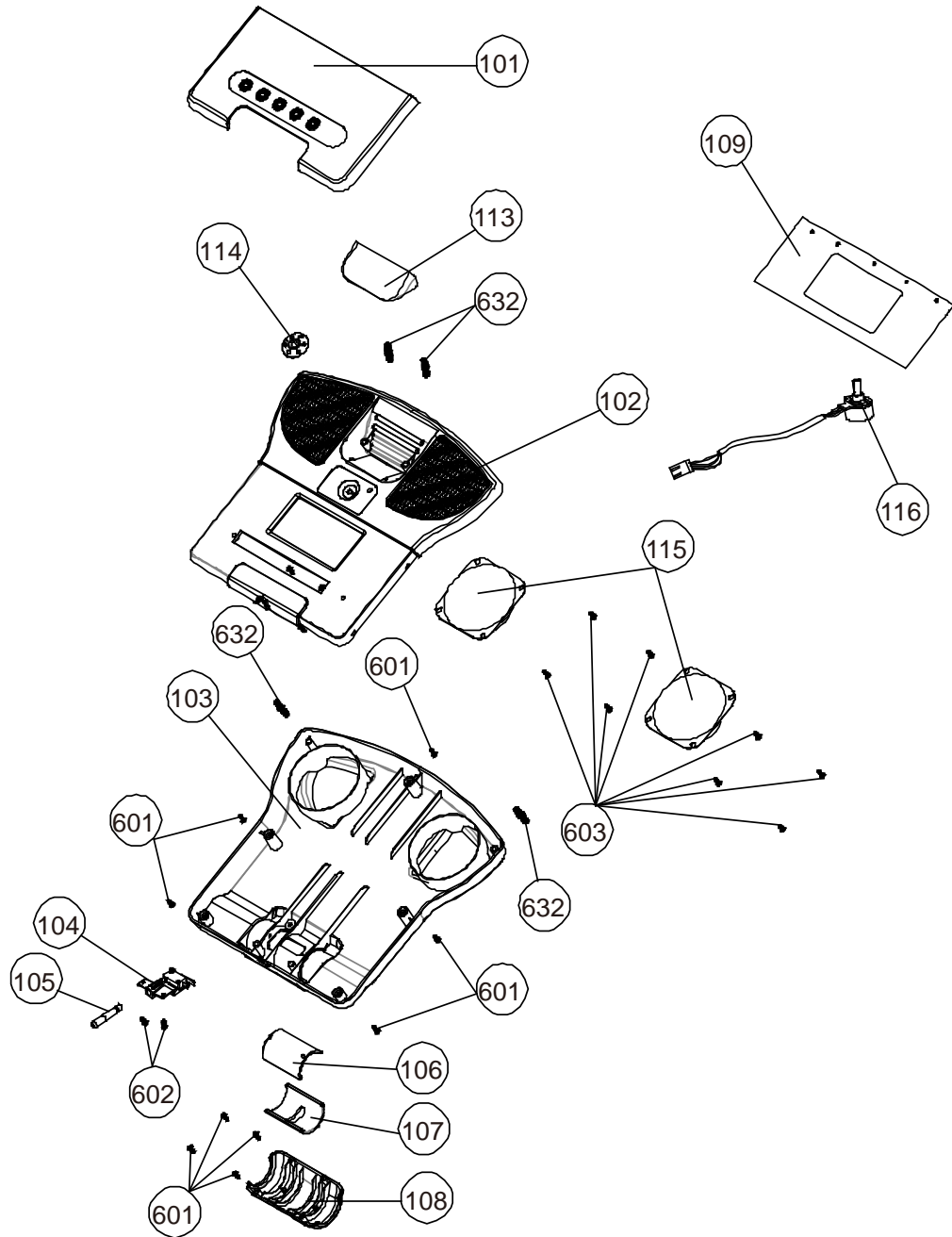
GB

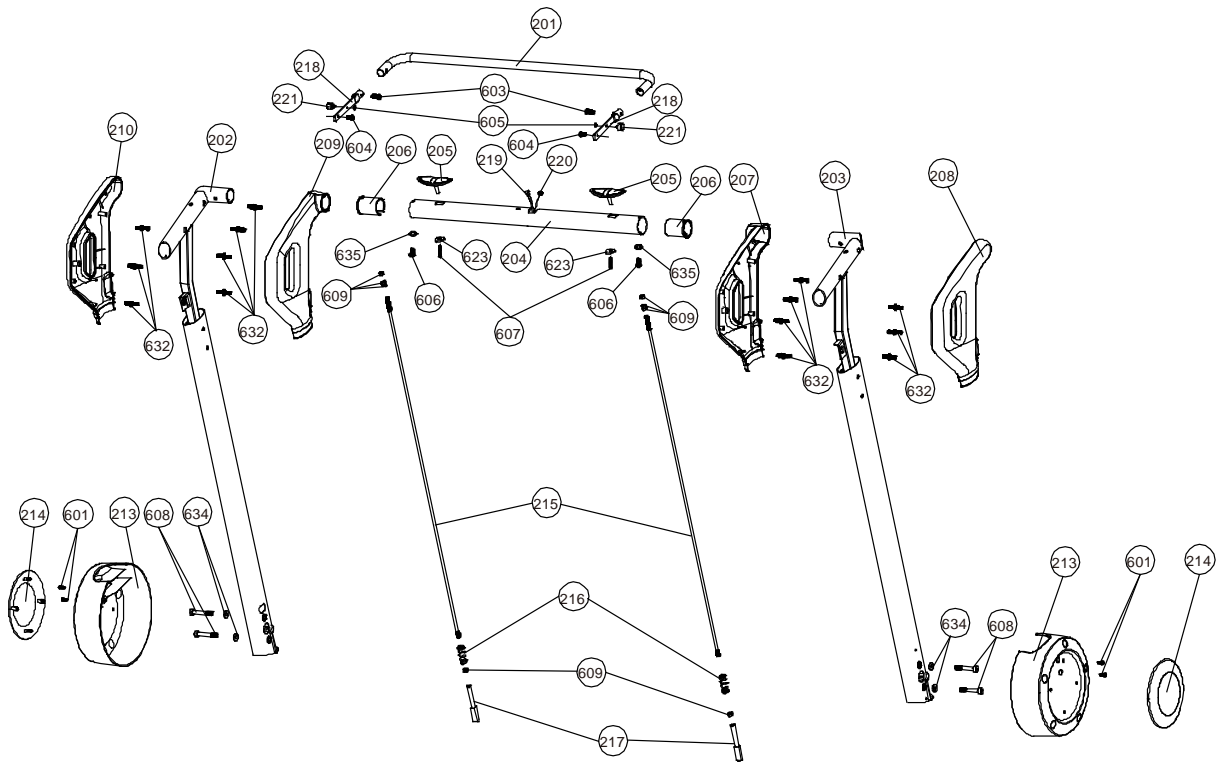
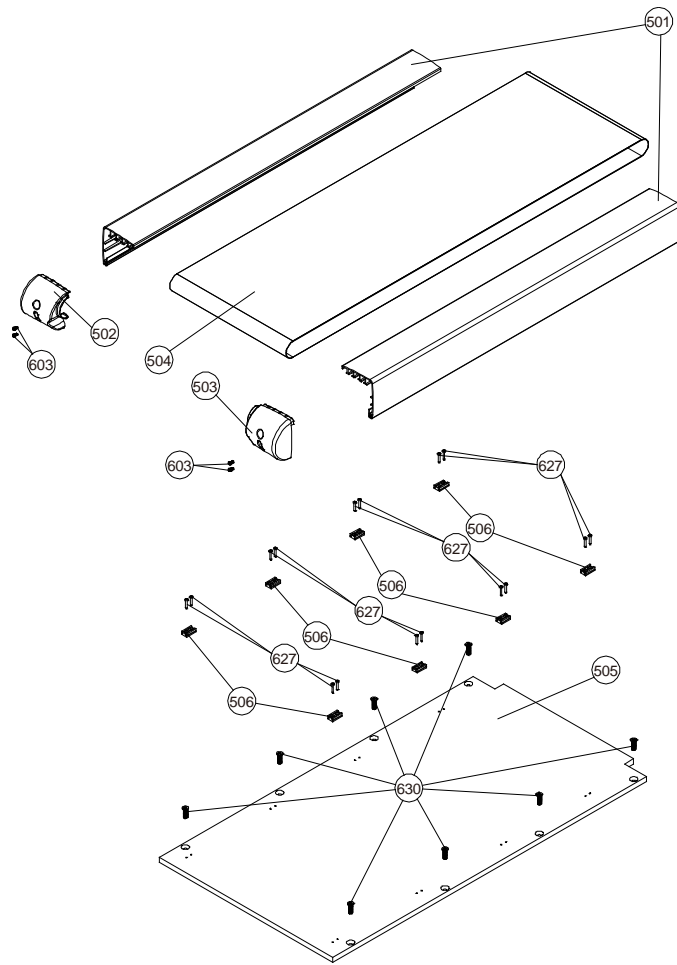
Correct biomechanical position: Please refer to left picture. Running straight on the treadmill is made easier by focusing on a fixed object in front of you in the room. Run as if you wanted to approach the object. Always keep a distance which you can reach the front hand bar.

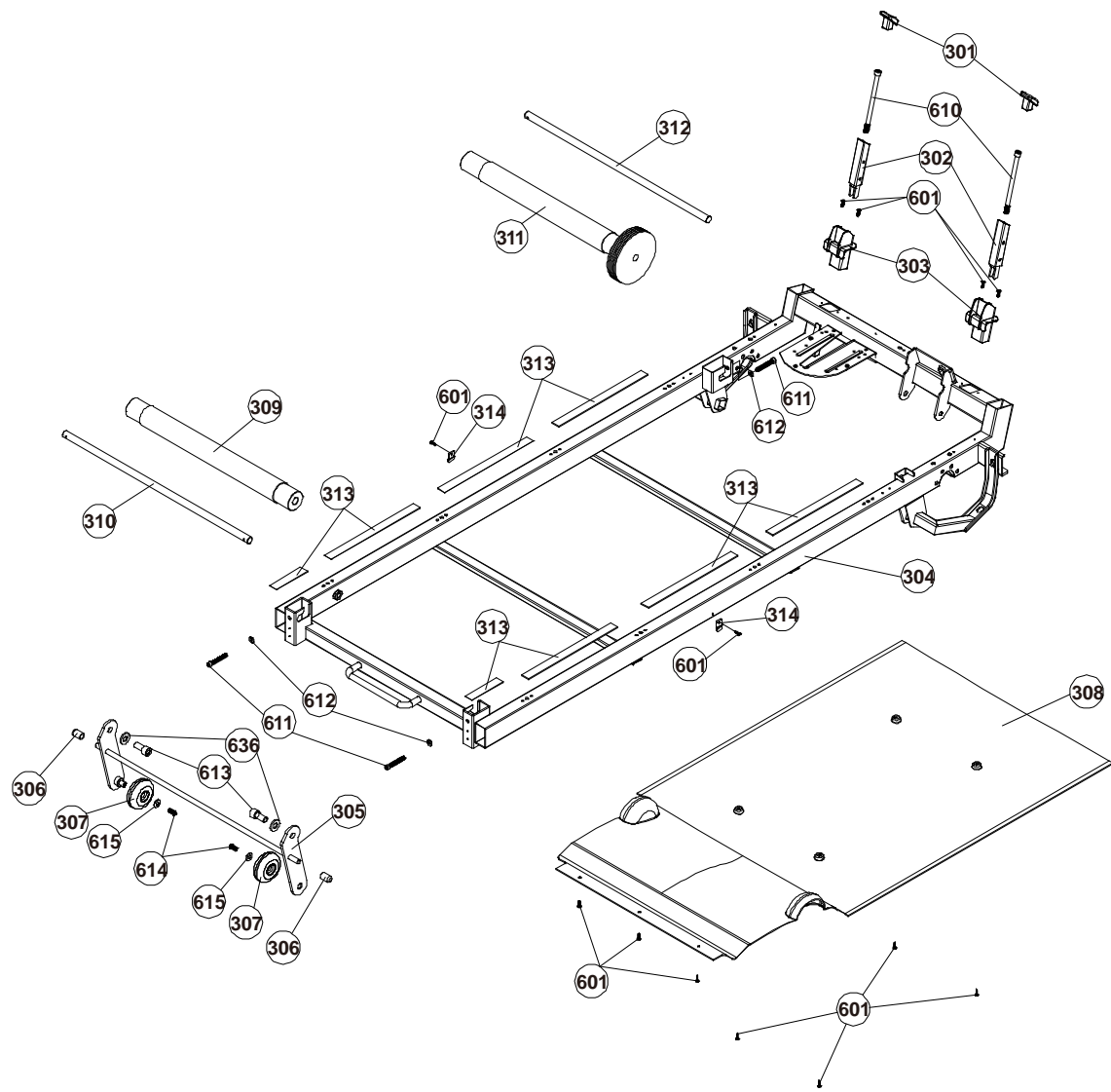
Major exercise type: This equipment focuses on your lower body, and it can train your thigh and shank muscles

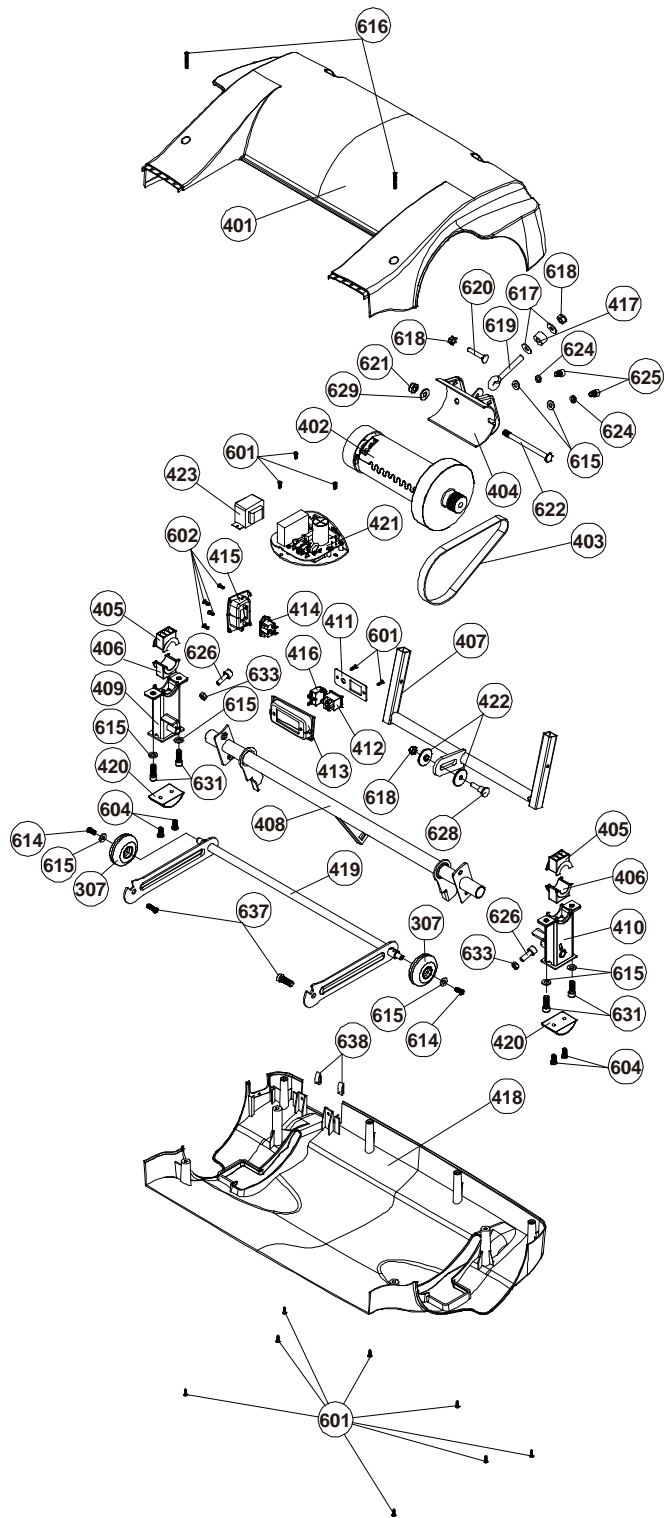
Important: Incorrect/excessive training can cause health injuries.

Exploded view









Spare Part List		
Part No.	Part name	Quantity
i run se-101	Console button plate	1
i run se-102	Console housing -upper	1
i run se-103	Console housing -lower	1
i run se-104	Safety Key base	1
i run se-105	Safety Key	1
i run se-106	Console housing holder-upper	1
i run se-107	Console housing holder-lower	1
i run se-108	Console fix lower cover	1
i run se-109	Computer main board	1
i run se-113	Holder cover	1
i run se-114	Volume adjustment knob	1
i run se-115	Loudspeakers	2
i run se-116	VR detection wire	1
i run se-201	Fold up grip	1
i run se-202	Upright -left	1
i run se-203	Upright -right	1
i run se-204	Heart rate handle bar	1
i run se-205	Pulse sensor set	2
i run se-206	Console support tube bushing	2
i run se-207	Handlebar cover right -inner	1
i run se-208	Handlebar cover right -outside	1
i run se-209	Handlebar cover left -inner	1
i run se-210	Handlebar cover left -outside	1
i run se-213	Upright lower cover	2
i run se-214	Side cover	2
i run se-215	Fold up grip connect rod	2
i run se-216	Spring	2
i run se-217	Upright lock pin	2
i run se-218	Fold up grip connector	2
i run se-219	Safety key wire -lower	1
i run se-220	5 pin computer wire -lower	1
i run se-221	Fold up grip axle	2
i run se-301	Fold up foot cover	2
i run se-302	Fold up foot	2
i run se-303	Front foot base	2
i run se-304	Main frame	1
i run se-305	Rear transport wheel bracket	1
i run se-306	Rear transport axle cap	1
i run se-307	Transportation wheel	4
i run se-308	Belt cover- bottom	4
i run se-309	Rear roller tube	1
i run se-310	Rear roller shaft	1
i run se-311	Front roller tube	1
i run se-312	Front roller shaft	1
i run se-313	9X30X2 Foam cushion	8
i run se-314	Side rail fix bracket	2
i run se-401	Motor hood	1
i run se-402	DC driving Motor	1
i run se-403	Driving Belt	1
i run se-404	Motor holder	1
i run se-405	Motor holder bracket end cap -upper	2
i run se-406	Motor holder bracket end cap -lower	2

Part No.	Part name	Quantity
i run se-407	Front foot bracket	1
i run se-408	Motor holder bracket locate plate	1
i run se-409	Motor holder bracket base -left	1
i run se-410	Motor holder bracket base -right	1
i run se-411	Switch board	1
i run se-412	Switch	1
i run se-413	Switch board holder	1
i run se-414	Electric outlet	1
i run se-415	Electric outlet holder	1
i run se-416	Electric protector	1
i run se-417	PU cushion	1
i run se-418	Motor cover -lower	1
i run se-419	Transport wheel bracket	1
i run se-420	Main frame foot cover	2
i run se-421	Motor control board	1
i run se-422	ID8XOD35X7 cushion	2
i run se-423	Transformer	1
i run se-501	Side rail	2
i run se-502	Rear end cap -left	1
i run se-503	Rear end cap -rihgt	1
i run se-504	Running belt	1
i run se-505	Running deck	1
i run se-506	Side rail guider	8
i run se-601	M4x15 mm Screw	39
i run se-602	3x8 mm Screw	6
i run se-603	M5X14 mm screw	14
i run se-604	M5X14 mm screw/washer	6
i run se-605	M4X9 washer	2
i run se-606	M8x18 mm allen bolt	2
i run se-607	4x30 mm screw	2
i run se-608	M8x50 mm bolt	4
i run se-609	Ø6 washer	5
i run se-610	M8x130 screw	2
i run se-611	M6x45 mm screw	3
i run se-612	Ø6.2x13x1.2 washer	3
i run se-613	M12x25 mm cap allen head bolt	2
i run se-614	M6x15 screw	4
i run se-615	Ø8x17x1.5 washer	10
i run se-616	M4X35 screw	2
i run se-617	Ø9x35x8 washer	2
i run se-618	M8 nut	5
i run se-619	M8X78 bolt	1
i run se-620	M8X48 bolt	1
i run se-621	M10 nut	1
i run se-622	M10X120 mm screw	1
i run se-623	Ø8 plate washer	10
i run se-624	Ø8 spring wahser	2
i run se-625	M8x12 allen head bolt	2
i run se-626	M8 bump bolt	2
i run se-627	M4x19 Screw	18
i run se-628	M8 special bolt	1

Part No.	Part name	Quantity
i run se-629	Ø10.5X20 washer	4
i run se-630	M10×25 allen head bolt	8
i run se-631	M8×30 allen head bolt	4
i run se-632	Plastic insert	18
i run se-633	M8 nut	2
i run se-634	Ø 8x23 wahser	4
i run se-635	Ø 8.2X15X1.5 washer	2
i run se-636	Ø 12X25X3 washer	2
i run se-637	M10X30 screw	2
i run se-638	Ø 21X13X0.7 spring washer	2
i run se-001	Hardware Set	1
i run se-002	Computer Instruction	1
i run se-003	Assembly Instruction	1

Reebok