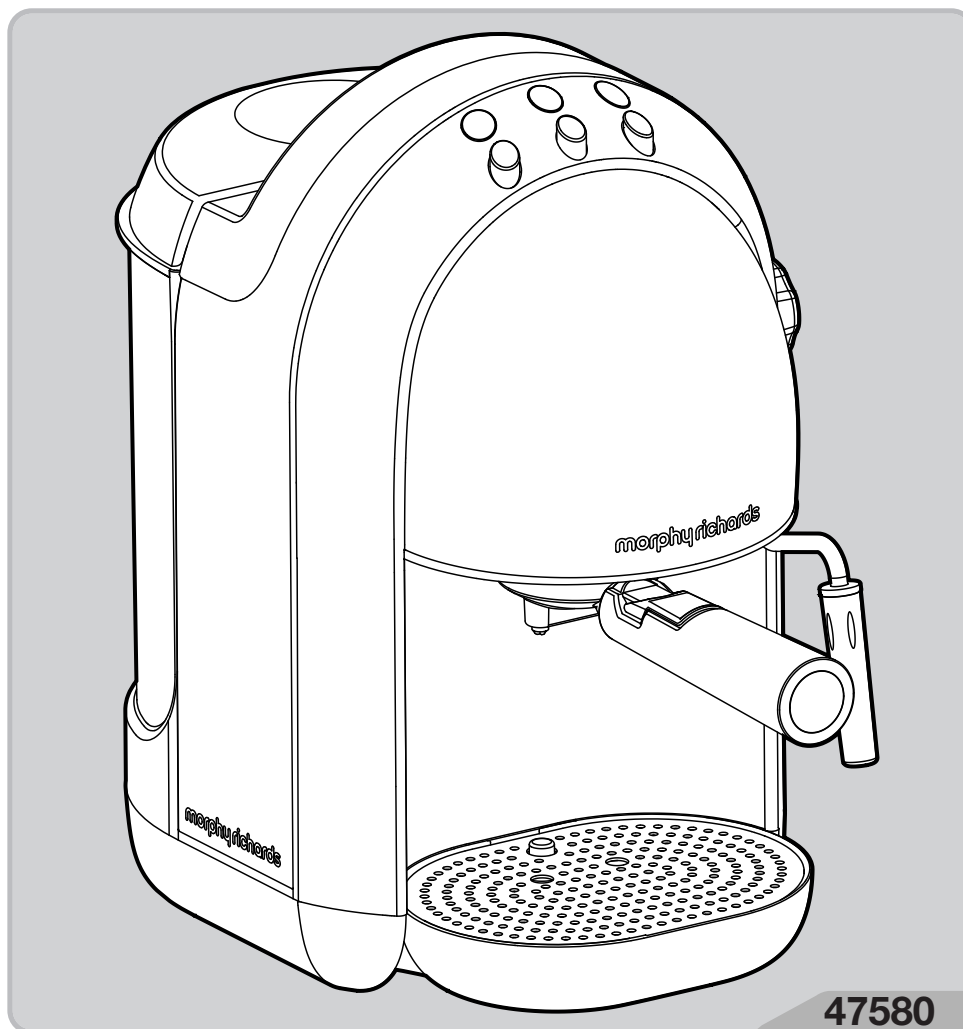


CM47580 MUK Rev4

morphy richards®

Accents Espresso



For competitions, product hints and tips
and more join us at



www.morphyrichards.co.uk/blog



www.facebook.com/morphyrichardsuk

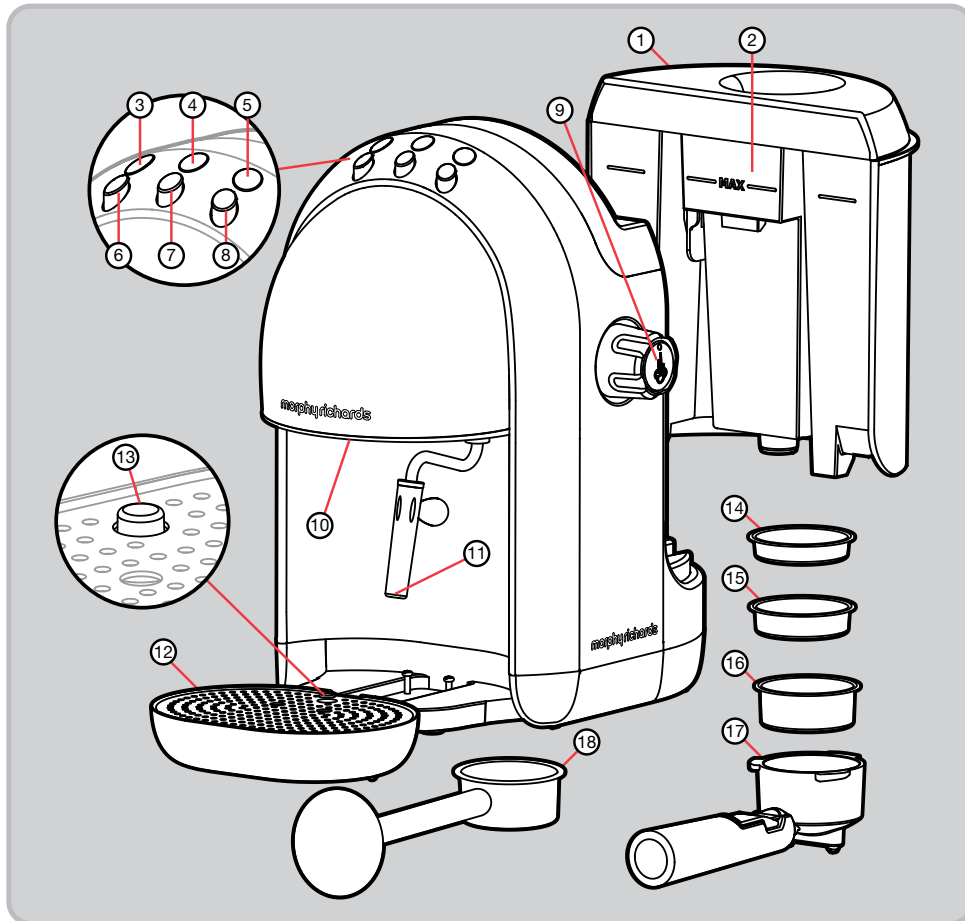


www.twitter.com/loveyourmorphy

www.morphyrichards.com

* Register online for your 2 year guarantee. See back of this instruction book for details. (UK and Ireland customers only)

Product overview

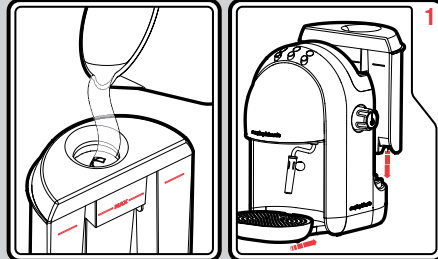


Features

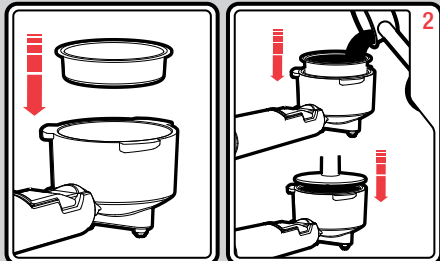
- | | |
|----------------------------|--|
| (1) Water Tank Lid | (11) Steam Wand (with cover) |
| (2) Water Tank | (12) Drip Tray and drip tray grid |
| (3) Coffee Ready Light | (13) Empty Drip Tray Indicator |
| (4) On/Off Light | (14) E.S.E. Pod Filter |
| (5) Steam Ready Light | (15) 7g Coffee Filter (for single shot use) |
| (6) Coffee Dispense Button | (16) 14g Coffee Filter (for double shot use) |
| (7) On/Off Button | (17) Filter Holder |
| (8) Steam Button | (18) Tamp Spoon |
| (9) Steam Control | |
| (10) Brewing Head | |

Using Your Coffee Maker

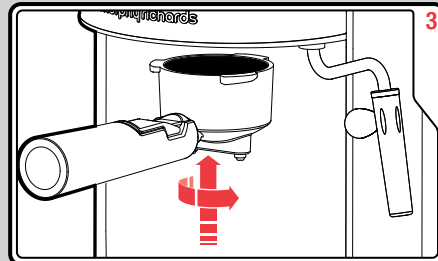
Your Accents Espresso uses ground coffee or Easy Serving Espresso (E.S.E.) pods and comes with three suitable Filter Holders. The 7 g Filter Holder (15) is for single shot use and the 14g Filter Holder (16) is for double shot use. Use the E.S.E. Pod Filter (14) when using E.S.E. pods - a compact coffee pod with a paper filter covering.



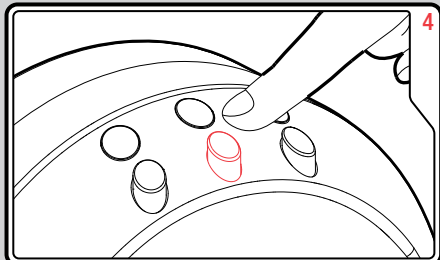
Assemble the Accents Espresso as above. Fill the Water Tank up to the MAX line, (1.25L)



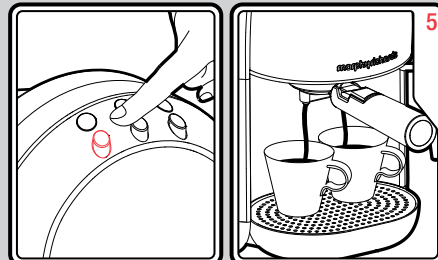
Place the required filter into the Filter Holder, (17) add the coffee grinds and tamp, alternatively insert the E.S.E. pod.



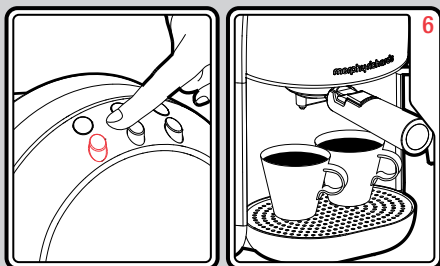
Place the Filter Holder into the Brewing Head and turn to lock into position.



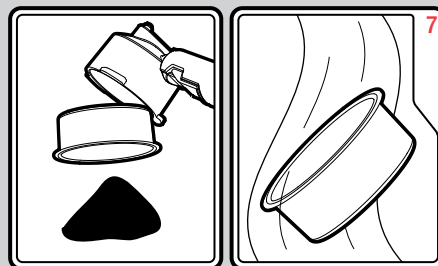
Plug the Accents Espresso in and press the On/Off button (7) wait for the Ready Light to illuminate. (3)



When the Accents Espresso is ready, place cups on the Drip Tray and press the Coffee Dispense Button. (6)

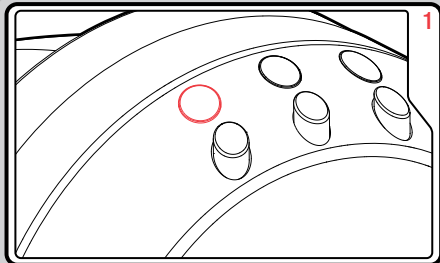


Press the Coffee Dispense Button (6) again to stop the coffee.

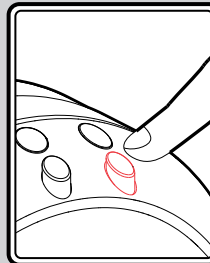


Empty the coffee grinds/ E.S.E pod, remove the Filter from the Holder and clean.

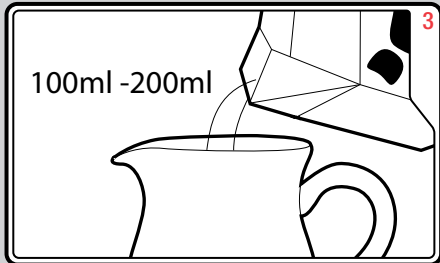
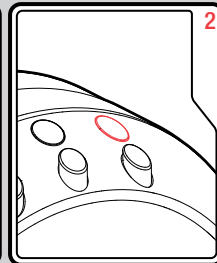
Using the Steam Wand



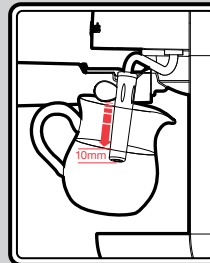
Fill the Water Tank and press the On/Off Button (7). Wait for the Ready Light to illuminate (3).



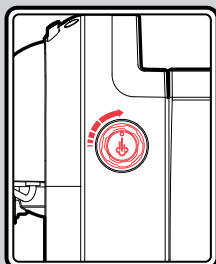
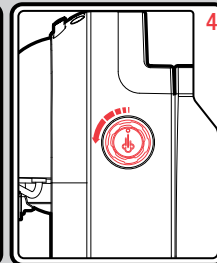
Press the Steam Button, (8) wait for the Steam Light to illuminate (5).



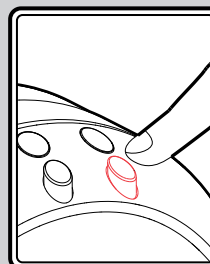
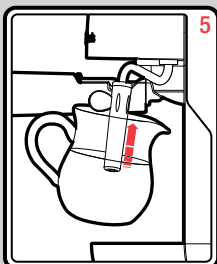
Pour 100-200ml of chilled milk into a jug.



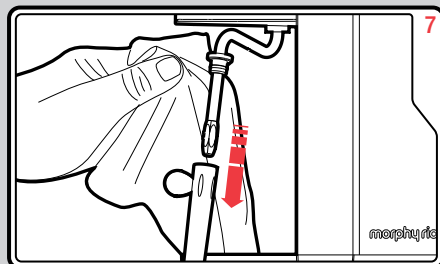
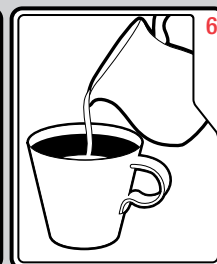
Place the Steam Wand (11) into the milk, slowly turn the Steam Control (9) to on.



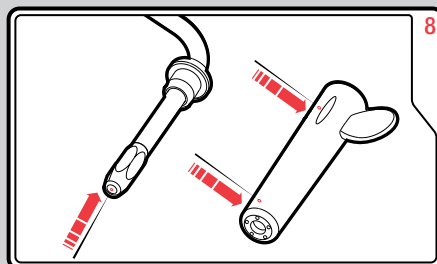
When enough froth has been produced, turn the Steam Control to off.



Press the Steam Button to exit the steam function. Serve the frothy milk.



To clean, remove the wand cover and use a wet cloth to clean the wand and cover.

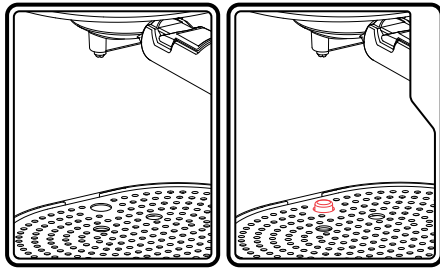


Use a pin to clean the nozzle head, and air holes in the cover.

WARNING

WHEN FROTHING MILK ENSURE THE STEAM CONTROL IS OFF BEFORE REMOVING THE WAND FROM THE MILK.

Emptying the Drip Tray



When the water in the Drip Tray is full, the Empty Drip Tray Indicator (13) will be visible

1. Remove the Drip Tray from the appliance and empty.
2. Clean the Grid and Drip Tray with a damp cloth before replacing.

Cleaning your Accents Espresso

1. Disconnect the appliance from the mains supply.
2. Make sure the appliance has completely cooled down.
3. Simply wipe the Steam Wand and exterior with a clean, damp cloth.
4. The Filter Holder and Water Tank should be washed after each use by rinsing them under water. To assist in keeping the Filter Holder clean we recommend you periodically run the machine with the Filter Holder in place, without coffee, using water only.

Do not use any abrasives or metal scourers as this will damage the finish on the unit.

Should the holes in the filter become blocked with coffee grinds, use a fine bristled brush to help clean.

When your coffee maker is not being used, we recommend that you do not leave the filter holder attached to the machine as this will reduce the life of the gasket.

5. Remove the Drip Tray Grid and Drip Tray from the appliance and remove any spilt coffee and water then clean them with a damp cloth or a damp sponge.
6. You must clean the Steam Wand and cover immediately after each use, after it has cooled down. Briefly use the steam setting to clear any remaining milk out of the Wand and Cover. Remove the Steam Wand Cover, place under warm running water to remove excess milk. If the Steam Wand becomes blocked, use a small pin to clean more thoroughly.

WARNING: Steam from the Steam Wand is extremely hot and can scald.

IMPORTANT: Never wash your coffee machine accessories in a dishwasher.

Descaling

1. Disconnect the appliance from the mains supply.
2. Make sure the appliance has completely cooled down completely.
3. Remove the Water Tank and Drip Tray from the machine.
4. Fill the water tank with dissolved citric acid solution, up to the max level marked on the side of the tank.
5. Re-fit the Water Tank and Drip Tray to the machine.
6. Place an empty container under the brewing head to gather the descaled hot boiled water.
7. Connect the appliance to the mains supply.
8. Press the On/Off button and wait for the Coffee Ready Light to illuminate.
9. Press the Coffee Dispense Button, water will flow through the unit.
10. Allow the pump to keep dispensing until the water tank is empty.
11. Repeat the process with cold water only to flush the system.

Troubleshooting

Problem	Reason	Solution
<ul style="list-style-type: none"> Water is dispensing from the Steam Wand 	<ul style="list-style-type: none"> Steam Control is open 	<ul style="list-style-type: none"> Rotate the Steam Control so its closed
<ul style="list-style-type: none"> The Coffee temperature is too cold 	<ul style="list-style-type: none"> Heater block is not hot enough before dispensing 	<ul style="list-style-type: none"> Before dispensing Coffee, make sure the ready light is illuminated.
<ul style="list-style-type: none"> The Coffee grinds are wet after use 	<ul style="list-style-type: none"> Coffee is not compact enough 	<ul style="list-style-type: none"> Tamp the coffee before inserting.
<ul style="list-style-type: none"> Espresso is weak 	<ul style="list-style-type: none"> Wrong Coffee Type 	<ul style="list-style-type: none"> Always use espresso coffee grinds
<ul style="list-style-type: none"> Milk is not frothing 	<ul style="list-style-type: none"> Air and steam are not getting into the milk 	<ul style="list-style-type: none"> Use a pin to clean the Steam Wand nozzle and air holes in the cleaner
<ul style="list-style-type: none"> Coffee is too strong or weak 	<ul style="list-style-type: none"> Wrong volume of coffee 	<ul style="list-style-type: none"> Use the correct coffee filter: 1 person - 7g 2 person 14g
<ul style="list-style-type: none"> What is E.S.E, and where can I find them? 	<ul style="list-style-type: none"> Easy Serving Espresso, coffee within a teabag 	<ul style="list-style-type: none"> They are available online and in some supermarkets

Making coffee

Your Accents Espresso coffee machine allows you to create a variety of coffee drinks helping you to create the coffee shop experience in your own home. The diagrams on this page are a simple guide showing you the percentage of ingredients that make up each of the drink types. Please refer to the quick start guide at the front of this booklet on how to create the perfect espresso and frothy milk. For further details as well as hints and tips please visit us at www.morphyrichards.co.uk/blog



Contact us

Helpline

If you are having a problem with your appliance, please call our Helpline, as we are more likely to be able to help than the store you purchased the item from.

Please have the product name, model number and serial number to hand when you call to help us deal with your enquiry quicker.

UK Helpline: 0844 871 0960

IRE Helpline: 1800 409 119

Spares: 0844 873 0726

Talk To Us

If you have any questions or comments, or want some great tips or recipe ideas to help you get the most out of your products, join us online:

Blog: www.morphyrichards.co.uk/blog

Facebook: www.facebook.com/morphyrichardsuk

Twitter: www.twitter.com/loveyourmorphy

Website: www.morphyrichards.com

Health and Safety

The use of any electrical appliance requires the following common sense safety rules.

Primarily there is danger of injury or death and secondly the danger of damage to the appliance. These are indicated in the text by the following two conventions:

WARNING: Danger to the person!

IMPORTANT: Damage to the appliance!

In addition, we offer the following safety advice.

Location

- This appliance is intended to be used in household and similar applications such as:
farm houses;
by clients in hotels, motels and other residential type environments;
bed and breakfast type environments.
It is not suitable for use in staff kitchen areas in shops, offices and other working environments.
- Remove all the packaging and retain for future reference.
- Ensure the coffee maker is used on a firm, flat surface.
- Do not use the coffee maker outdoors or in a bathroom.
- Do not place the coffee maker on a highly polished wooden surface as damage may occur to the surface.
- Do not place the coffee maker on or near hot surfaces such as a hot plate, radiant rings or near a naked flame.
- **WARNING:** Do not place the coffee maker onto a metal tray or metal surface whilst in use.

Other safety considerations

- Disconnect the coffee maker from the mains supply when filling, cleaning or not in use.
- When unplugging, switch the coffee maker off, then remove the plug from the wall socket.
- Keep the outside of the coffee maker area clean and dry at all times.
- Do not leave the appliance unattended, when it is connected to main supply
- Do not touch hot surfaces. Always use handles or knobs on the coffee maker.
- Do not immerse the coffee maker itself in water and always ensure the electrical connections are kept dry.
- Do not operate any appliance with a damaged cable or plug or after the appliance malfunctions or has been damaged in any manner. Ring the helpline number for advice on examination and repair.
- Disconnect the appliance from mains supply outlet under the following conditions:
Before the water tank is filled with water
Before removing any parts from the appliance or refitting any parts on the appliance.
Before cleaning or maintenance
When the appliance is not working correctly
After using the appliance
- The use of attachments or tools not recommended or sold by Morphy Richards may cause fire, electric shock or injury.

- Do not use the coffee maker for anything other than its intended purpose.

Mains cable

- The mains cable should reach without straining from the socket.
- Do not let the mains cable hang over the edge of a worktop where a child could reach it.
- Do not let the cable run across an open space e.g. between a low socket and table, or a cooker or toaster or other hot area which might damage the cable.
- If the supply cable is damaged, it must be replaced by the manufacturer, its service agent or similarly qualified person in order to avoid a hazard.

Product safety

- Never use warm or hot water to fill the water tank.
- Check the filter holder that is firmly put in place before making coffee.
- Do not remove the filter holder when the appliance is being operated.
- Do not overfill the water reservoir.
- Empty the water tank, when the appliance unused for long period.
- Do not touch any hot parts of appliance including coffee filter, steam wand etc. when in use.
- Do not place on or near hot gas or electric burner, or in heated oven.

Personal safety

- Do not touch metal parts until the unit has cooled.
- This appliance is not intended for use by persons (including children) with reduced physical, sensory or mental capabilities, or lack of experience and knowledge, unless they have been given supervision or instruction concerning use of the appliance by a person responsible for their safety.

Children

- Children do not understand the dangers associated with operating electrical appliances. Never allow children to use this appliance.
- Children should be supervised to ensure that they do not play with the appliance.

Treating scalds

- Run cold water over the affected area immediately. Do not stop to remove clothing, get medical help quickly.

Electrical requirements

Check that the voltage on the rating plate of your appliance corresponds with your house electricity supply which must be A.C. (Alternating Current).

If the socket outlets in your home are not suitable for the plug supplied with this appliance the plug should be removed and the appropriate one fitted.

WARNING: The plug removed from the mains lead, if severed, must be destroyed as a plug with a bared flexible cord is hazardous if engaged into a live socket outlet.

Should the fuse in the 13 amp plug require changing, a 13 amp BS1362 fuse must be fitted.

WARNING: This appliance must be earthed.

CM47580 MUK Rev 4 04/12

Registering your 2 year guarantee

Your standard one year guarantee is extended for an additional 12 months when you register the product within 28 days of purchase with Morphy Richards. If you do not register the product with Morphy Richards within 28 days, your product is guaranteed for 1 year. To validate your 2 year guarantee register with us online at www.morphyrichards.co.uk

Or call our customer registration line

UK 0844 871 0962

IRE 1800 409 119

N.B. Each qualifying product needs to be registered with Morphy Richards individually.

Please note that the 2 year guarantee is only available in the UK and Ireland. Please refer to the one year guarantee for more information.

Your 1 year guarantee

It is important to retain the retailer's receipt as proof of purchase. Staple your receipt to this back cover for future reference.

Please quote the following information if the product develops a fault. These numbers can be found on the base of the product.

Model no.

Serial no.

All Morphy Richards products are individually tested before leaving the factory. In the unlikely event of any appliance proving to be faulty within 28 days of purchase, it should be returned to the place of purchase for it to be replaced.

If the fault develops after 28 days and within 12 months of original purchase, you should contact the Helpline number quoting Model number and Serial number on the product, or write to Morphy Richards at the address shown.

You may be asked to return a copy of proof of purchase.

Subject to the exclusions set out below (see Exclusions), the faulty appliance will then be repaired or replaced as appropriate and dispatched usually within 7 working days of receipt.

If, for any reason, this item is replaced or repaired during the 1 year guarantee period, the guarantee on the new item will be calculated from original purchase date. Therefore it is vital to retain your original till receipt or invoice to indicate the date of initial purchase.

To qualify for the 1 year guarantee, the appliance must have been used according to the instructions supplied. For example, crumb trays should have been emptied regularly.

Exclusions

Morphy Richards shall not be liable to replace or repair the goods under the terms of the guarantee where:

- 1 The fault has been caused or is attributable to accidental use, misuse, negligent use or used contrary to the manufacturer's recommendations or where the fault has been caused by power surges or damage caused in transit.
 - 2 The appliance has been used on a voltage supply other than that marked on the products.
 - 3 Repairs have been attempted by persons other than our service staff (or authorised dealer).
 - 4 The appliance has been used for hire purposes or non domestic use.
 - 5 The appliance is second hand.
 - 6 Morphy Richards reserves the right not to carry out any type of servicing under the guarantee at its discretion
 - 7 Plastic filters for all Morphy Richards kettles and coffee makers are not covered by the guarantee.
 - 8 Batteries and damage from leakage are not covered by the guarantee.
- This guarantee does not confer any rights other than those expressly set out above and does not cover any claims for consequential loss or damage. This guarantee is offered as an additional benefit and does not affect your statutory rights as a consumer. Morphy Richards products are intended for household use only. See usage limitations within the location safety instructions.

Disclaimer

Morphy Richards has a policy of continuous improvement in product quality and design. The company, therefore reserves the right to change the specification of its models at any time.



For electrical products sold within the European Community. At the end of the electrical products useful life, it should not be disposed of with household waste.

Please recycle where facilities exist. Check with your Local Authority or retailer for recycling advice in your country

**IF YOU ARE HAVING A PROBLEM
WITH ONE OF OUR PRODUCTS, CALL
OUR HELPLINE:**

**UK: 0844 871 0960
EIRE: 1800 409 119
SPARES: 0844 873 0726**

morphy richards

The After Sales Division
Morphy Richards Ltd
Mexborough, South Yorkshire,
England, S64 8AJ

Helplines (office hours)
UK 0844 871 0960
Spare Parts 0844 873 0726
Republic of Ireland 1800 409 119
www.morphyrichards.com

