

## Health and Safety

The use of any electrical appliance requires the following common sense safety rules. Please read these instructions carefully before using the product.

- This appliance can be used by children aged from 8 years and above and persons with reduced physical, sensory or mental capabilities, or lack of experience and knowledge, if they have been given supervision or instruction concerning the use of the appliance in a safe way and understand the hazards involved.
- Children shall not play with the appliance.
- Cleaning and user maintenance shall not be made by children without supervision.

In addition, we offer the following safety advice.

### Location

- This appliance is intended to be used in household and similar applications such as:
  - farm houses;
  - by clients in hotels, motels and other residential type environments;
  - bed and breakfast type environments.
- It is not suitable for use in staff kitchen areas in shops, offices and other working environments.
- Do not use outdoors or in a bathroom.
- Always locate your appliance away from the edge of the worktop.

### Mains cable

- Do not let the mains cable hang over the edge of the worktop where a child could reach it.
- Do not let the lead run across an open space e.g. between a low socket and a table.
- Do not let the cable run across a cooker or other hot area which might damage the cable.
- The mains cable should reach from the socket to the base unit without straining the connections.
- The power cord cannot be replaced. Contact Morphy Richards for advice.

### Personal safety

- Avoid touching moving parts. Keep hands, hair and clothing, and utensils away from the hand mixer attachments during operation, to prevent personal injury and/or damage to the appliance.

- Do not allow children to use the hand mixer without supervision.

### Other safety considerations

- Do not use the appliance for anything other than its intended purpose.
- The use of attachments or tools not recommended or sold by Morphy Richards may cause fire, electric shock or injury.

### Product specific safety

- Do not operate any appliance with a damaged cord or plug or after the appliance malfunctions or has been damaged in any manner.
- Unplug from the outlet when not in use, or when left unattended, and before assembling, disassembling or cleaning.

### Electrical requirements

Check that the voltage on the rating plate of your appliance corresponds with your house electricity supply which must be A.C. (Alternating Current).

Should the fuse in the mains plug require changing, a 3 amp BS1362 fuse must be fitted.

FP48989 MUK Rev 4 08/12

## Registering your 5 year guarantee

Your standard two year guarantee is extended for an additional 36 months when you register the product within 28 days of purchase with Morphy Richards. If you do not register the product with Morphy Richards within 28 days, your product is guaranteed for 2 year. To validate your 5 year guarantee register with us online at [www.morphyrichards.co.uk](http://www.morphyrichards.co.uk)

Or call our customer registration line

**UK 0844 871 0962**

**IRE 1800 409 119**

N.B. Each qualifying product needs to be registered with Morphy Richards individually.

Please note that the 5 year guarantee is only available in the UK and Ireland. Please refer to the 2 year guarantee for more information.

## Your 2 year guarantee

It is important to retain the retailer's receipt as proof of purchase. Staple your receipt to this back cover for future reference.

Please quote the following information if the product develops a fault. These numbers can be found on the base of the product.

Model no.

Serial no.

All Morphy Richards products are individually tested before leaving the factory. In the unlikely event of any appliance proving to be faulty within 28 days of purchase, it should be returned to the place of purchase for it to be replaced.

If the fault develops after 28 days and within 24 months of original purchase, you should contact the Helpline number quoting Model number and Serial number on the product, or write to Morphy Richards at the address shown.

You may be asked to return a copy of proof of purchase.

Subject to the exclusions set out below (see Exclusions), the faulty appliance will then be repaired or replaced as appropriate and dispatched usually within 7 working days of receipt.

If, for any reason, this item is replaced or repaired during the 2 year guarantee period, the guarantee on the new item will be calculated from original purchase date. Therefore it is vital to retain your original till receipt or invoice to indicate the date of initial purchase.

To qualify for the 2 year guarantee, the appliance must have been used according to the instructions supplied. For example, crumb trays should have been emptied regularly.

## Exclusions

Morphy Richards shall not be liable to replace or repair the goods under the terms of the guarantee where:

- 1 The fault has been caused or is attributable to accidental use, misuse, negligent use or used contrary to the manufacturer's recommendations or where the fault has been caused by power surges or damage caused in transit.
  - 2 The appliance has been used on a voltage supply other than that stamped on the products.
  - 3 Repairs have been attempted by persons other than our service staff (or authorised dealer).
  - 4 The appliance has been used for hire purposes or non domestic use.
  - 5 The appliance is second hand.
  - 6 Morphy Richards reserves the right not to carry out any type of servicing under the guarantee at its discretion
  - 7 Plastic filters for all Morphy Richards kettles and coffee makers are not covered by the guarantee.
  - 8 Batteries and damage from leakage are not covered by the guarantee.
- This guarantee does not confer any rights other than those expressly set out above and does not cover any claims for consequential loss or damage. This guarantee is offered as an additional benefit and does not affect your statutory rights as a consumer. Morphy Richards products are intended for household use only. See usage limitations within the location safety instructions.

## Disclaimer

Morphy Richards has a policy of continuous improvement in product quality and design. The company, therefore reserves the right to change the specification of its models at any time.



For electrical products sold within the European Community. At the end of the electrical products useful life, it should not be disposed of with household waste.

Please recycle where facilities exist. Check with your Local Authority or retailer for recycling advice in your country

**IF YOU ARE HAVING A PROBLEM  
WITH ONE OF OUR PRODUCTS, CALL  
OUR HELPLINE:**

**UK: 0844 871 0960  
EIRE: 1800 409 119  
SPARES: 0844 873 0726**

**morphyrichards**

The After Sales Division  
Morphy Richards Ltd  
Mexborough, South Yorkshire,  
England, S64 8AJ

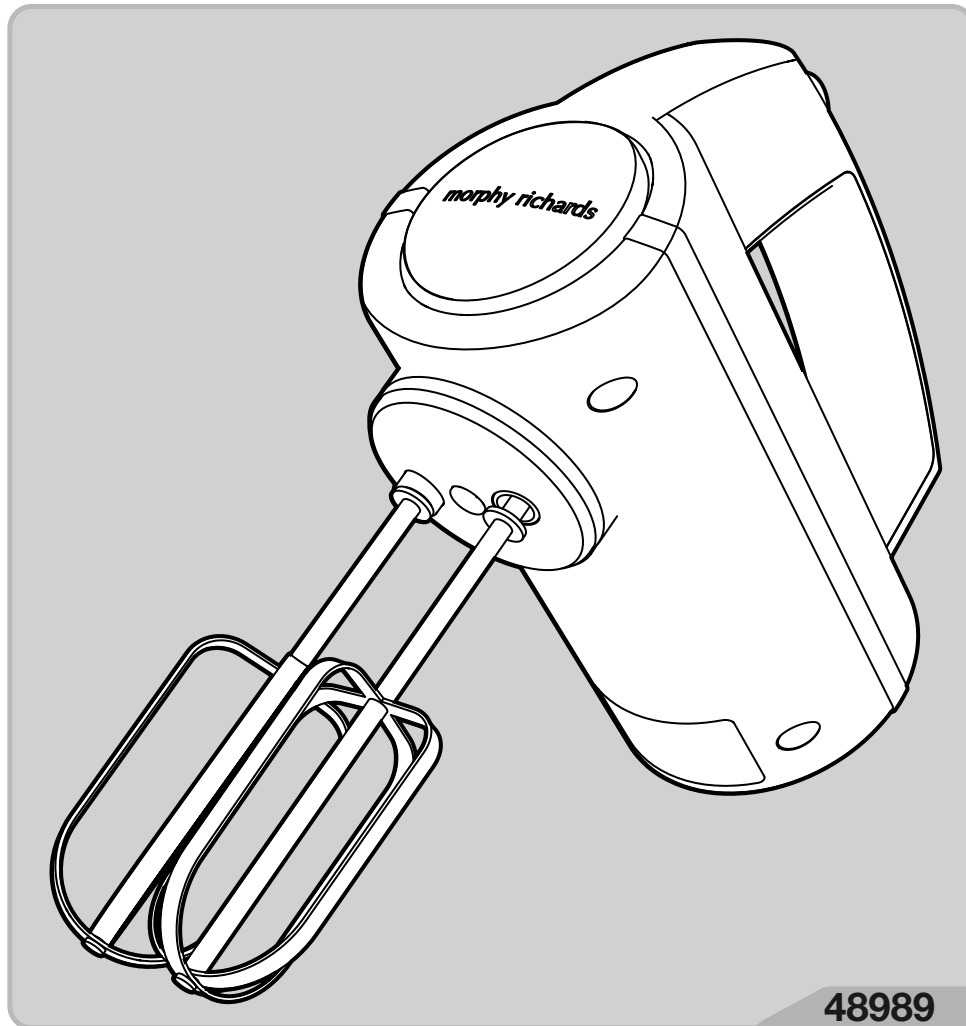
Helplines (office hours)  
UK 0844 871 0960  
Spare Parts 0844 873 0726  
Republic of Ireland 1800 409 119  
[www.morphyrichards.com](http://www.morphyrichards.com)



FP48989 MUK Rev 4

**morphy richards®**

Accents Hand Mixer



For competitions, product hints and tips  
and more join us at



[www.morphyrichards.co.uk/blog](http://www.morphyrichards.co.uk/blog)



[www.facebook.com/morphyrichardsuk](http://www.facebook.com/morphyrichardsuk)

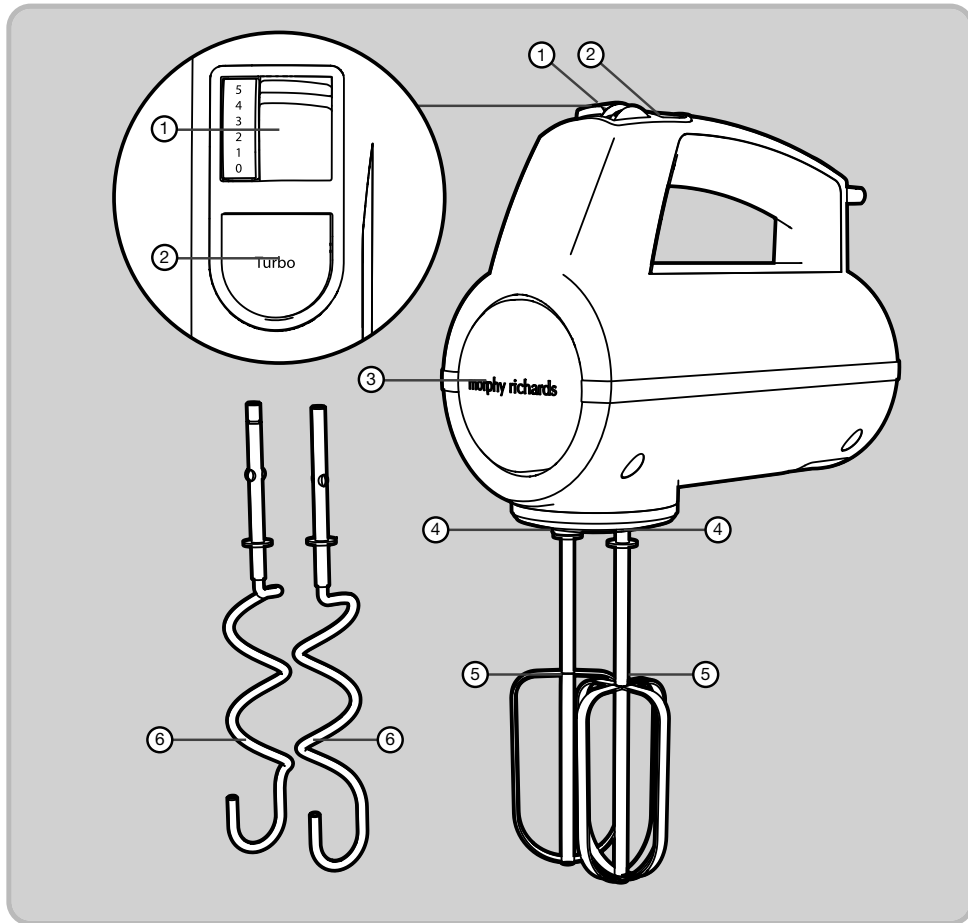


[@loveyourmorphy](https://twitter.com/loveyourmorphy)

**[www.morphyrichards.com](http://www.morphyrichards.com)**

\* Register online for your 5 year guarantee. See back of this instruction book for details. (UK and Ireland customers only)

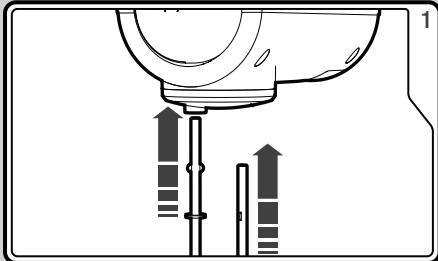
## Product overview



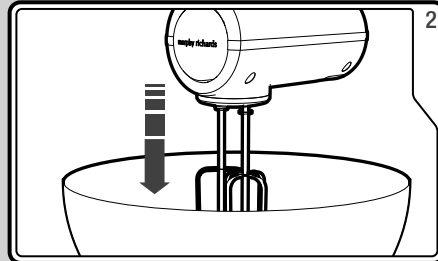
## Features

- (1) Speed Control
- (2) Turbo Button
- (3) Release Button
- (4) Sockets
- (5) Beaters
- (6) Dough Hooks

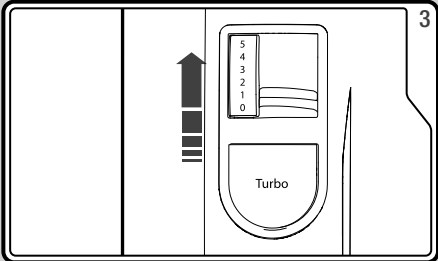
## Using your Accents Hand Mixer



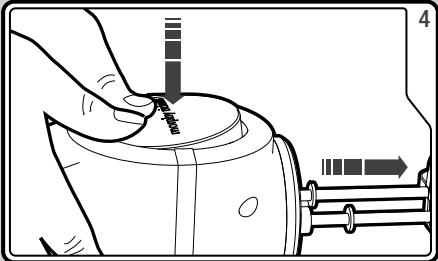
Ensure the mixer is switched off. Insert the Beaters (5) or Dough Hooks (6) into the Sockets. See 'Inserting the Dough Hooks; below for more information.



Place the mixer into the bowl. Do not switch the mixer on when it is not placed in a suitable mixing bowl.



Turn the Speed Control (1) on to the first speed setting. Increase the speed as required. Turn off before removing from the bowl.



After use, press on the top edge of the Release Button (3) to remove the Beaters or Dough Hooks for cleaning.

### Before first use

Before using the Accents Hand Mixer for the first time, clean the Beaters (5) and Dough Hooks (6) in warm soapy water.

### Important

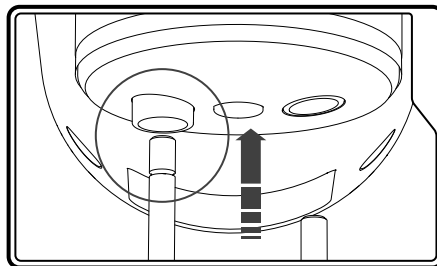
Do not operate the Accents Hand Mixer continuously for more than 6 minutes (with the Beaters) or 1 minute (with the Dough Hooks). After using for these lengths of time, let it cool down for 10 minutes before using again.

### Turbo Boost

The Accents Mixer has 5 different mixing speeds as well as a Turbo Boost Button (2).

Press the Turbo Boost Button while the mixer is in use for a slight increase in speed.

### Inserting the Dough Hooks



When attaching the Dough Hooks (6) into the Sockets (4), the Dough Hook with the groove on the shaft should be inserted into the Socket with the sleeve.

