


FP403000 MUK Rev 1

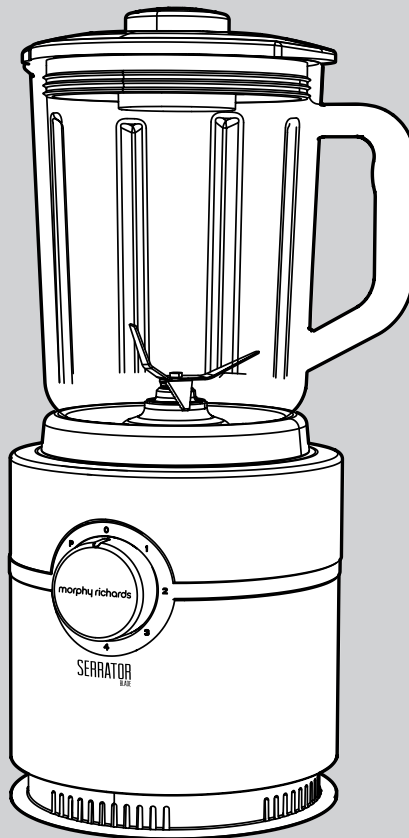
morphyrichards®
smart ideas for your home



Accents Table Blender

 Please read and keep these instructions for future use

NEW
SERRATOR
BLADE



For competitions, product hints and tips
and more join us at



www.morphyrichards.co.uk/blog



www.facebook.com/morphyrichardsuk



@loveyourmorphyrichards

www.morphyrichards.com

* Register online for your 5 year guarantee. See the back of this instruction book for details (UK and Ireland customers only).

** Applies to serrator blade only. See back of this instruction book for details.

*** Independently tested by CATRA using the International Standard Cutting Test System to ISO 8442.5 vs a standard plain edge blade.

Health and Safety

The use of any electrical appliance requires the following common sense safety rules. Please read these instructions carefully before using the product.

- This appliance can be used by children aged from 8 years and above and persons with reduced physical, sensory or mental capabilities, or lack of experience and knowledge, if they have been given supervision or instruction concerning the use of the appliance in a safe way and understand the hazards involved.
- Children shall not play with the appliance.
- Cleaning and user maintenance shall not be made by children without supervision.

In addition, we offer the following safety advice.

Location

- This appliance is intended to be used in household and similar applications such as:
 - farm houses;
 - by clients in hotels, motels and other residential type environments;
 - bed and breakfast type environments.
- It is not suitable for use in staff kitchen areas in shops, offices and other working environments.
- Do not use outdoors or in a bathroom.
- Always locate your appliance away from the edge of the worktop.
- Do not place the bowl used with the appliance on a highly polished wooden surface as damage may occur to the surface.

Mains cable

- Do not let the mains cable hang over the edge of the worktop where a child could reach it.
- Do not let the lead run across an open space e.g. between a low socket and a table.
- Do not let the cable run across a cooker or other hot area which might damage the cable.
- The mains cable should reach from the socket to the base unit without straining the connections.
- The power cord cannot be replaced. Contact Morphy Richards for advice.

Personal safety

- Avoid touching moving parts. Keep hands, hair and clothing, and utensils away from the hand mixer attachment blades during operation, to prevent personal injury and/or damage to the appliance.
- Care shall be taken when handling the sharp cutting blades, emptying the bowl and during cleaning.

- Do not allow children to use the blender without supervision.

Other safety considerations

- Do not use the appliance for anything other than its intended purpose.
- The use of attachments or tools not recommended or sold by Morphy Richards may cause fire, electric shock or injury.

Product specific safety

- **IMPORTANT:** Allow hot liquids to cool before adding to the blender, always ensure the lid is fitted correctly.
- Do not blend for longer than the time periods recommended in the 'Operating chart' on page 7.
- Do not overfill the blender. This could cause damage to the motor. The plug fuse will blow if the blender is overloaded. Replace the fuse and do not exceed the maximum recommended volumes. Refer to the 'Operating chart' on page 7.
- Be careful if hot liquid is poured into the blender as it can be ejected out of the appliance due to sudden steaming.
- Always disconnect the blender from the supply if it is left unattended and before assembling, disassembling or cleaning.
- Do not use the appliance if the glass jar or lid is damaged or has visible cracks.
- **CAUTION:** Ensure that the blender is switched off before removing it from the stand.

Electrical requirements

Check that the voltage on the rating plate of your appliance corresponds with your house electricity supply which must be A.C. (Alternating Current).

Should the fuse in the mains plug require changing, a 5 amp BS1362 fuse must be fitted.

WARNING: This appliance must be earthed.

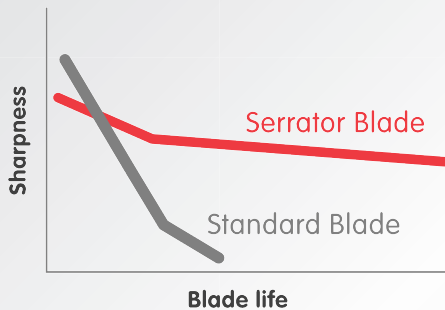
NEW SERRATOR BLADE

STAYS SHARPER
12x LONGER
THAN STANDARD BLADES

Congratulations on choosing your new Morphy Richards food preparation appliance with Serrator Blade technology. With its revolutionary, unique design the Serrator Blade is designed to give you superior cutting performance for longer.

How does the Serrator blade work?

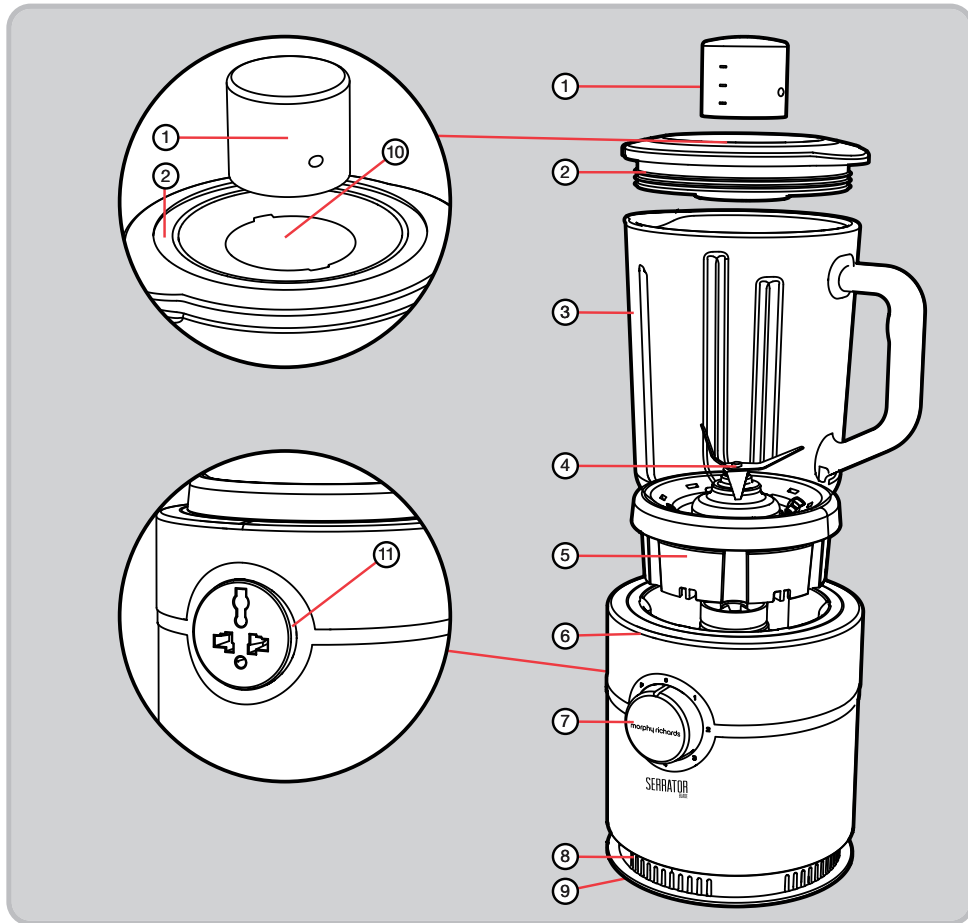
Specially developed by our in-house designers the Serrator Blade has been created to outperform standard plain edge blades. The perfect serration has been carefully selected and rigorously tested to give you superior performance and us the confidence that the Serrator Blade will give you years of satisfaction.



Our new precision Serrator Blades **stay sharper up to 12x longer** than standard blades, maintaining performance for life.



Product overview



Features

- | | |
|--------------------------------|-----------------------------|
| (1) Measuring Cup | (10) Pouring Hole |
| (2) Lid | (11) Plug Storage (on rear) |
| (3) Glass Jug | |
| (4) Serrator Blade | |
| (5) Connector | |
| (6) Base Unit | |
| (7) Control Dial | |
| (8) Air Vents | |
| (9) Cable Storage (underneath) | |

Before first use

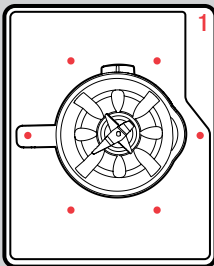
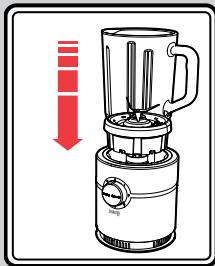
- Carefully unpack your Accents Table Blender as the Serrator Blades (4) are very sharp.
- Remove any stickers (except for the serial label) and wash all the parts that are safe to immerse in water.

- **WARNING:** Never immerse the Base Unit in water or in any other liquid. Always ensure the electrical connections are kept dry. This may be wiped with a clean, damp cloth. But only when unplugged from the electrical socket.

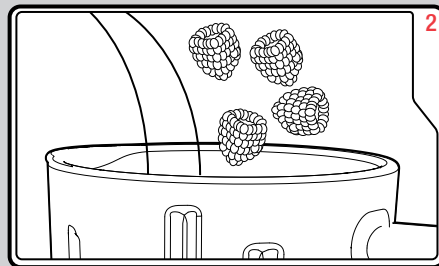
IMPORTANT

DO NOT ADD HOT LIQUID TO THE JUG.
ALLOW TO COOL FIRST.

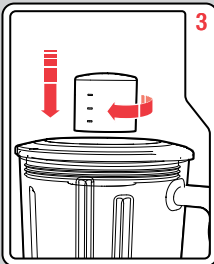
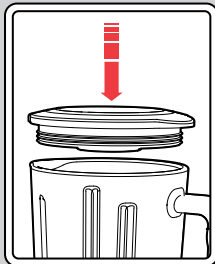
Using your Accents Table Blender



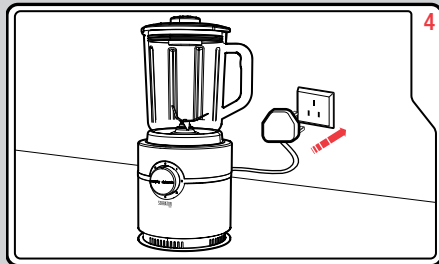
Place the Glass Jug (3) onto the Base Unit (6). For ease of use, there are 6 positions for the Jug to sit on the Base Unit.



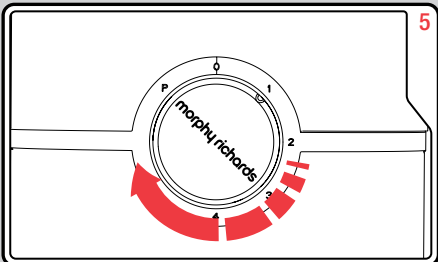
Place the food or cold liquids into the Glass Jug. Do not exceed more than 1L.



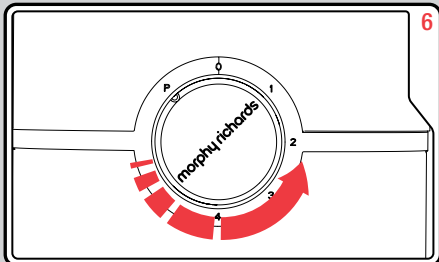
Place the Lid (2) on the Glass Jug, pushing down firmly. Place the Measuring Cap (1) into place twisting clockwise to lock into place.



Plug the Accents Table Blender into the mains socket.



Turn the Control Dial (7) to 1 to start blending. Increase the speed as required.



To use the pulse function turn the Control Dial to P. Do not use for prolonged periods of time.

Measuring Cap

- The Measuring Cap (1) can be used to measure small quantities of liquid.
- 1 Pour the liquid through the Pouring Hole (10) in the Lid.
 - 2 Place the Measuring Cap (3) back in the Lid, twisting to lock/unlock. Then proceed with your blending.

Crushing ice

- Follow the procedure in the 'Using your Accents Table Blender' section, replacing food with the ice cubes to be crushed.
- Plug in the Blender and turn the Control Dial (7) to pulse position (P) and hold for several seconds
- Note: The maximum capacity for ice crushing at any one time is 500ml.

Top tips

Use your Blender for soups, sauces, drinks, pates, mayonnaise, dressing etc.

- Do not put dry ingredients into the Blender before switching on. If necessary cut them into pieces, remove the Measuring Cap, then with the Blender running drop the pieces through the Pouring Hole one by one.

Never run the Blender with dry ingredients for longer than 15 seconds.

Allow to cool for 5 minutes.

- When making mayonnaise, put all the ingredients except oil, into the blender. Then with the machine running pour the oil slowly into the Blender through the Pouring Hole (10).
- Thick mixture, eg. pates and dips, may require scraping out with a spatula. Ensure the appliance is switched off first. If the mixture is difficult to process add more liquid.
- When blending, pour the liquids in first and then add the solid food. Begin blending at the lower speed and increase when needed.

IMPORTANT: To ensure the long life of your blender, never run it for longer than 60 seconds and allow to cool for 5 minutes. Switch off as soon as you have reached the desired consistency.

- The machine will not work if the Glass Jug (3) is fitted incorrectly.

- Don't use the Glass Jug as a storage container. Keep it empty when not in use.
- Never blend more than 1 litre (1¾ pints) - less for frothy liquids, such as milk shakes.

Care and cleaning

- Before cleaning and maintenance, switch the appliance off and unplug it.
- After use, fill the Glass Jug (3) with 1L (1¾ pints) of warm water and run for 30 seconds on the pulse setting and repeat as necessary. Never use abrasives or cream cleaners.
- Clean the Base Unit (6) with a damp cloth or kitchen paper roll.
- There is a facility to wrap your power cable around the base of the product and fit the plug into the Plug Holder (11).
- Reassemble the Accents Blender by carefully placing the Glass Jug on the Base Unit, ensuring it fits correctly.
- **WARNING :** Never immerse the Base Unit in water.
- **WARNING:** If any liquid is spilt in the top of the Base Unit, switch off and unplug from the socket and dry with a cloth.

FP403000 MUK Rev 1 03/13

Lifetime blade guarantee

The 'Serrator Blade' is warranted to be free from defects in materials and workmanship for life. This warranty covers the original purchaser only and is not assignable or transferable to any other party. This warranty is available to consumers who use the 'Serrator Blades' for non-commercial household purposes. This warranty does not cover any damage caused by accident, misuse or any use other than as described in your owner's manual, or damage resulting from failure to maintain and clean this product as specified in your owner's manual.

Registering your 5 year guarantee

Your standard two year product guarantee is extended for an additional 36 months when you register the product within 28 days of purchase with Morphy Richards. If you do not register the product with Morphy Richards within 28 days, your product is guaranteed for 2 years. To validate your 5 year guarantee register with us online at www.morphyrichards.co.uk

Or call our customer registration line

UK 0844 871 0962
IRE 1800 409 119

N.B. Each qualifying product needs to be registered with Morphy Richards individually.

Please note that the 5 year guarantee is only available in the UK and Ireland. Please refer to the 2 year guarantee for more information.

Your 2 year guarantee

It is important to retain the retailer's receipt as proof of purchase. Staple your receipt to this back cover for future reference.

Please quote the following information if the product develops a fault. These numbers can be found on the base of the product.

Model no.

Serial no.

All Morphy Richards products are individually tested before leaving the factory. In the unlikely event of any appliance proving to be faulty within 28 days of purchase, it should be returned to the place of purchase for it to be replaced.

If the fault develops after 28 days and within 24 months of original purchase, you should contact the Helpline number quoting Model number and Serial number on the product, or write to Morphy Richards at the address shown.

You may be asked to return a copy of proof of purchase.

Subject to the exclusions set out below (see Exclusions), the faulty appliance will then be repaired or replaced as appropriate and dispatched usually within 7 working days of receipt.

If, for any reason, this item is replaced or repaired during the 2 year guarantee period, the guarantee on the new item will be calculated from original purchase date.

Therefore it is vital to retain your original till receipt or invoice to indicate the date of initial purchase.

To qualify for the 2 year guarantee, the appliance must have been used according to the instructions supplied. For example, crumb trays should have been emptied regularly.

Exclusions

Morphy Richards shall not be liable to replace or repair the goods under the terms of either the Lifetime Blade Guarantee or the 2 or 5 Year Guarantee where:

- 1 The fault has been caused or is attributable to accidental use, misuse, negligent use or used contrary to the manufacturer's recommendations or where the fault has been caused by power surges or damage caused in transit.
 - 2 The appliance has been used on a voltage supply other than that stamped on the products.
 - 3 Repairs have been attempted by persons other than our service staff (or authorised dealer).
 - 4 The appliance has been used for hire purposes or non domestic use.
 - 5 The appliance is second hand.
 - 6 Morphy Richards reserves the right not to carry out any type of servicing under the guarantee at its discretion
 - 7 Plastic filters for all Morphy Richards kettles and coffee makers are not covered by the guarantee.
 - 8 Batteries and damage from leakage are not covered by the guarantee.
- These guarantees does not confer any rights other than those expressly set out above and do not cover any claims for consequential loss or damage. These guarantees are offered as an additional benefit and do not affect your statutory rights as a consumer. Morphy Richards products are intended for household use only. See usage limitations within the location safety instructions.

Disclaimer

Morphy Richards has a policy of continuous improvement in product quality and design. The company, therefore reserves the right to change the specification of it's models at any time.



For electrical products sold within the European Community. At the end of the electrical products useful life, it should not be disposed of with household waste.

Please recycle where facilities exist. Check with your Local Authority or retailer for recycling advice in your country

**IF YOU ARE HAVING A PROBLEM
WITH ONE OF OUR PRODUCTS, CALL
OUR HELPLINE:**

**UK: 0844 871 0960
EIRE: 1800 409 119
SPARES: 0844 873 0726**

morphy richards

The After Sales Division
Morphy Richards Ltd
Mexborough, South Yorkshire,
England, S64 8AJ

Helplines (office hours)
UK 0844 871 0960
Spare Parts 0844 873 0726
Republic of Ireland 1800 409 119
www.morphyrichards.com

