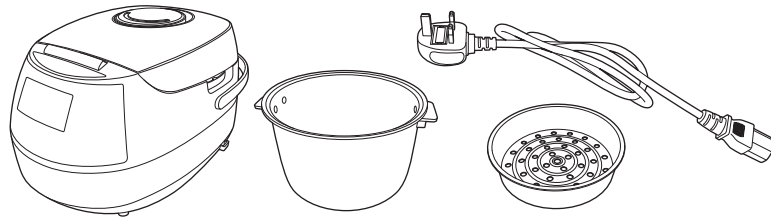


CLEVERCHEF™ QUICK START GUIDE

WHAT'S IN THE BOX

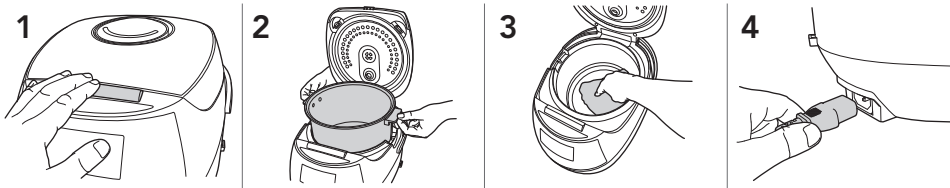


Also included is the instruction manual.

- Read the instruction manual carefully before using your appliance for the first time.
- Please refer to the instruction manual for the full product function details.

PREPARING YOUR CLEVERCHEF

1. Open your Cleverchef by pressing the button on the front.
2. Take all of the items and inner pot out of your Cleverchef. Wash and dry the inner pot.
3. Wipe the inside of your Cleverchef with a damp cloth. Place the inner pot back into your Cleverchef.
4. Insert the power cord into the back of your. Slot the plug on the other end of the power cord into a wall socket.

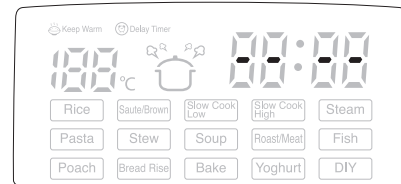


USING YOUR CLEVERCHEF

Turning your Cleverchef on:

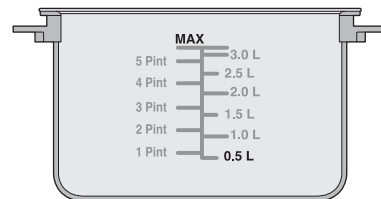
When you first turn your Cleverchef on you will hear a beep and "-- --" will be shown on the display and the **START** button will flash.

IMPORTANT: If the inner pot is not in your Cleverchef when you turn it on, "POT" will be displayed.



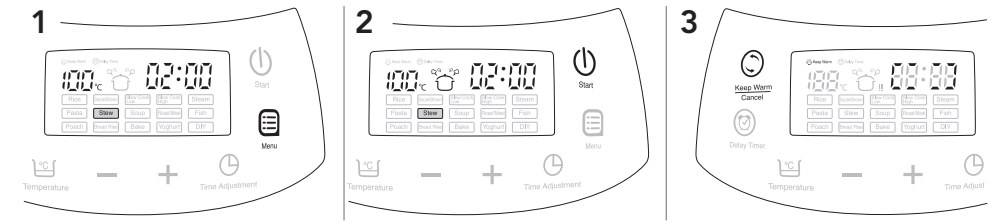
Filling the inner pot

IMPORTANT: Remove the inner pot before filling. Liquid and ingredients **MUST** be between the **0.5 L** and **MAX** marks on the inner pot. When cooking pasta or rice, these will expand when cooking, only **HALF** fill the inner pot.



Selecting a cooking program

1. Press the **MENU** button repeatedly to select the desired cooking program.
2. To start cooking, press the **START** button.
3. At the end of the cooking cycle the Keep Warm function will start. Press the **KEEP WARM / CANCEL** button stop the Keep Warm process.

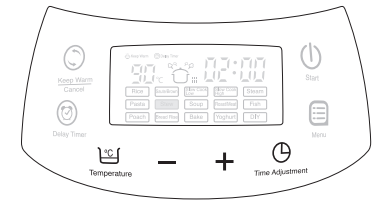


Adjusting the time

Press the **TIME ADJUST** button. Use the **+** and **-** buttons to change the time.

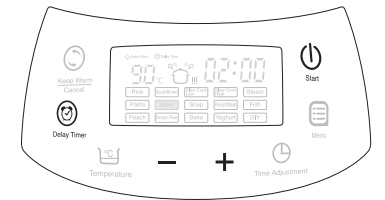
Adjusting the temperature

Press the **TEMPERATURE ADJUST** button. Use the **+** and **-** buttons to change the temperature.



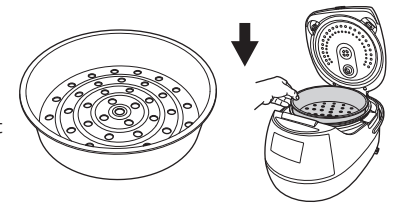
Using the delay timer

Press the **DELAY TIMER** button (2 hour default). Use the **+** and **-** buttons to change the time (Max 24 hours). Press the **START** button to begin countdown.



Using the steam function

Fill the inner pot with at least 0.5 L of water. Slot the steamer tray into the top of the inner pot. Now place your food into the steamer tray. Press the **MENU** button to select **STEAM**. When the cooking cycle has finished press the **KEEP WARM/CANCEL** button to finish.



Using the pasta & poach function

Fill the inner pot with at least 0.5 L of water. Press the **MENU** button to select **PASTA** or **POACH** functions and press the **START** button. When your Cleverchef has reached temperature you will hear a "beep", open the lid (take care of the steam) and place the ingredients in the inner pot, then close the lid. Press the **START** button again to start the cooking cycle. When the cooking cycle has finished press the **KEEP WARM/CANCEL** button to finish.

CLEANING

Always ensure your Cleverchef is cool before cleaning.

SEE THE MAIN INSTRUCTION BOOKLET FOR FULL CLEANING INSTRUCTIONS

drew@cole®
SWITCHED ON LIVING

Register your product at www.drewandcole.com and visit us for...

FAQs Videos Recipes Support

Join our community...

