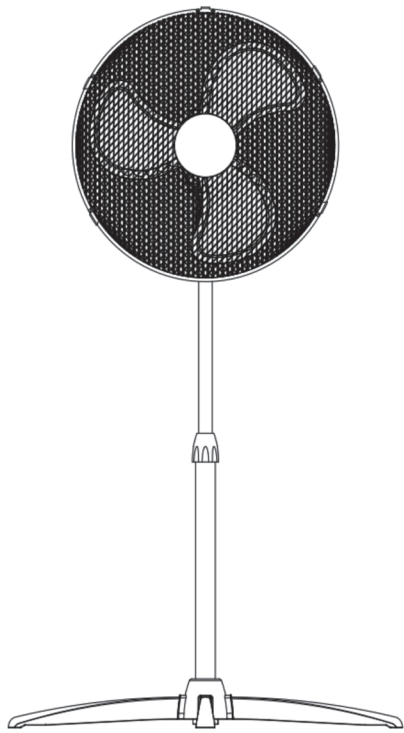


145.000 mm

210.000 mm

challenge®

Model No. TX-1608K
16 INCH PEDESTAL FAN WHITE
INSTRUCTION MANUAL



Important: Please read these instructions carefully before first using this product and retain for future reference.

Thank you for choosing this challenge fan. It is a remarkably versatile product which offers a choice of air-circulation for summer comfort. This Challenge fan has been designed and manufactured to high standards of engineering and with proper use and care, as described in this leaflet, will give you years of useful service.

IMPORTANT SAFETY INSTRUCTIONS

Read all instruction carefully and keep this manual for future reference.

1. This appliance can be used by children aged from 8 years and above and persons with reduced physical, sensory or mental capabilities or lack of experience and knowledge if they have been given supervision or instruction concerning use of the appliance in a safe way and understand the hazards involved. Children shall not play with the appliance. Cleaning and user maintenance shall not be made by children without supervision.
2. To avoid electric shock, do not place the cord, the plug or the appliance in water or other liquids.
3. Do not use the fan near an open window as rain may cause an electric shock hazard
4. Unplug the plug outlet when not in use and before cleaning.
5. Check the mains cord for damage from time to time. If damaged discontinue use immediately and do not use until the appliance has been inspected and approved for use by a qualified service person.
6. Never attempt repairs yourself. Repairs to electrical appliances should only be performed by a qualified electrician. Improper repairs may place the user at serious risk and will invalidate the guarantee, take the appliance to a qualified repair agent.
7. Do not let the cord touch hot surfaces.
8. Do not place the appliance on an unsteady surface.
9. Do not use the fan in areas of high humidity, very dusty, or in temperatures higher than 40°C.
10. Do not insert fingers or other objects into the fan during operation. Especially take care with children.
11. Please do not allow fan to be directed onto children, the elderly or infirm for a long period of time.

ISSUE DATE 26/11/2022

2

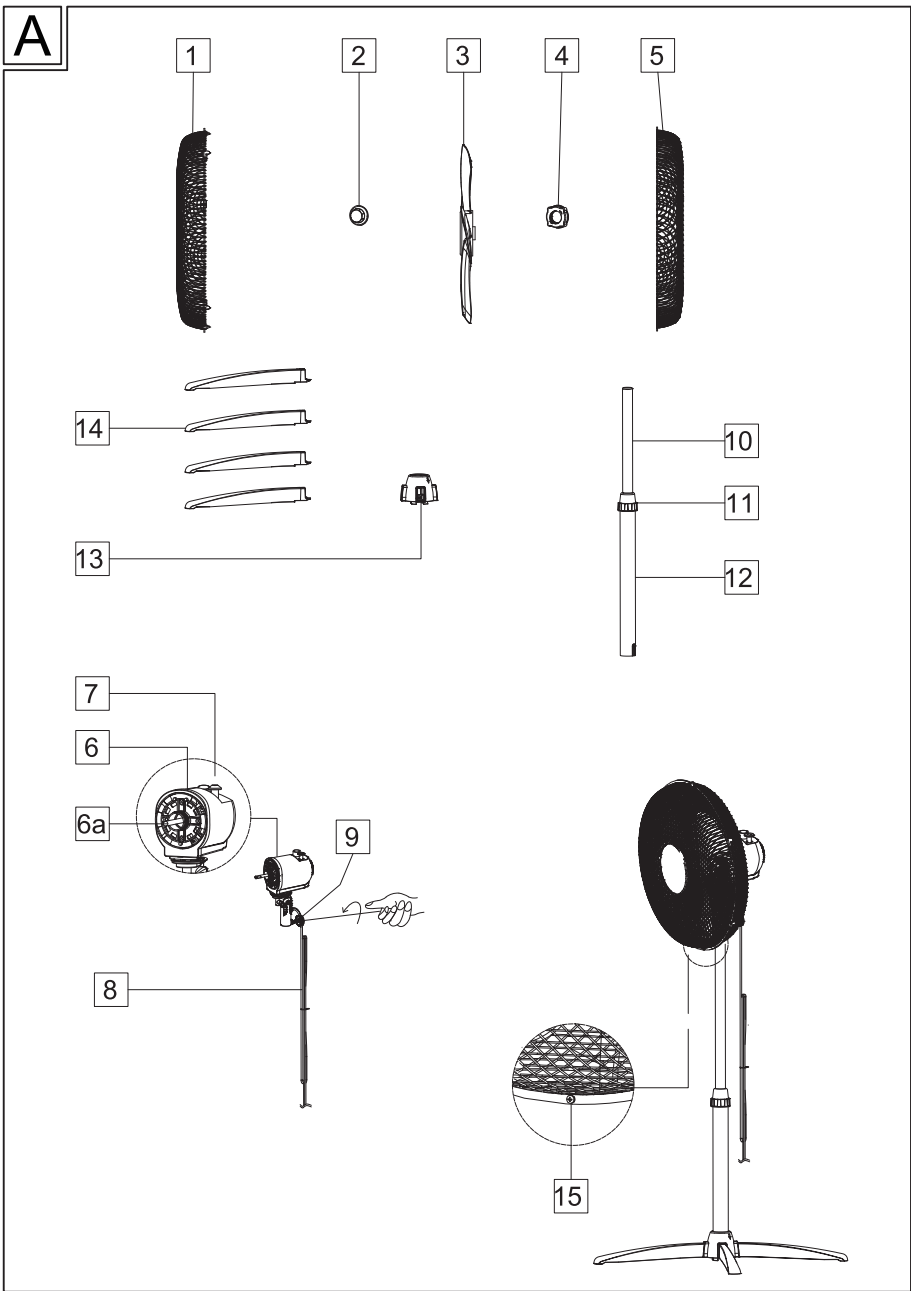
12. Do not place naked flame sources near unit, such as lit candles.
13. Do not use detergent or aerosol sprays on the fan
14. The appliance is for household use only. Do not use at outdoors or for any commercial or industrial purpose.
15. Always disconnect the mains power, before any user maintenance.
16. Do not disassemble, the fan guard cannot be removed, see cleaning and maintenance.
17. Only use on the mains supply indicated on the ratings label
18. Do not operate the fan in the presence of explosive and/or flammable fumes.
19. Do not place the fan or any parts near an open flame, cooking or other heating appliance.
20. Do not hang or mount fan on a wall or ceiling.
21. Do not operate if the fan housing is damaged.

ISSUE DATE 26/11/2022

3

PARTS & CONTROLS

1.Parts of the fan



ISSUE DATE 26/11/2022

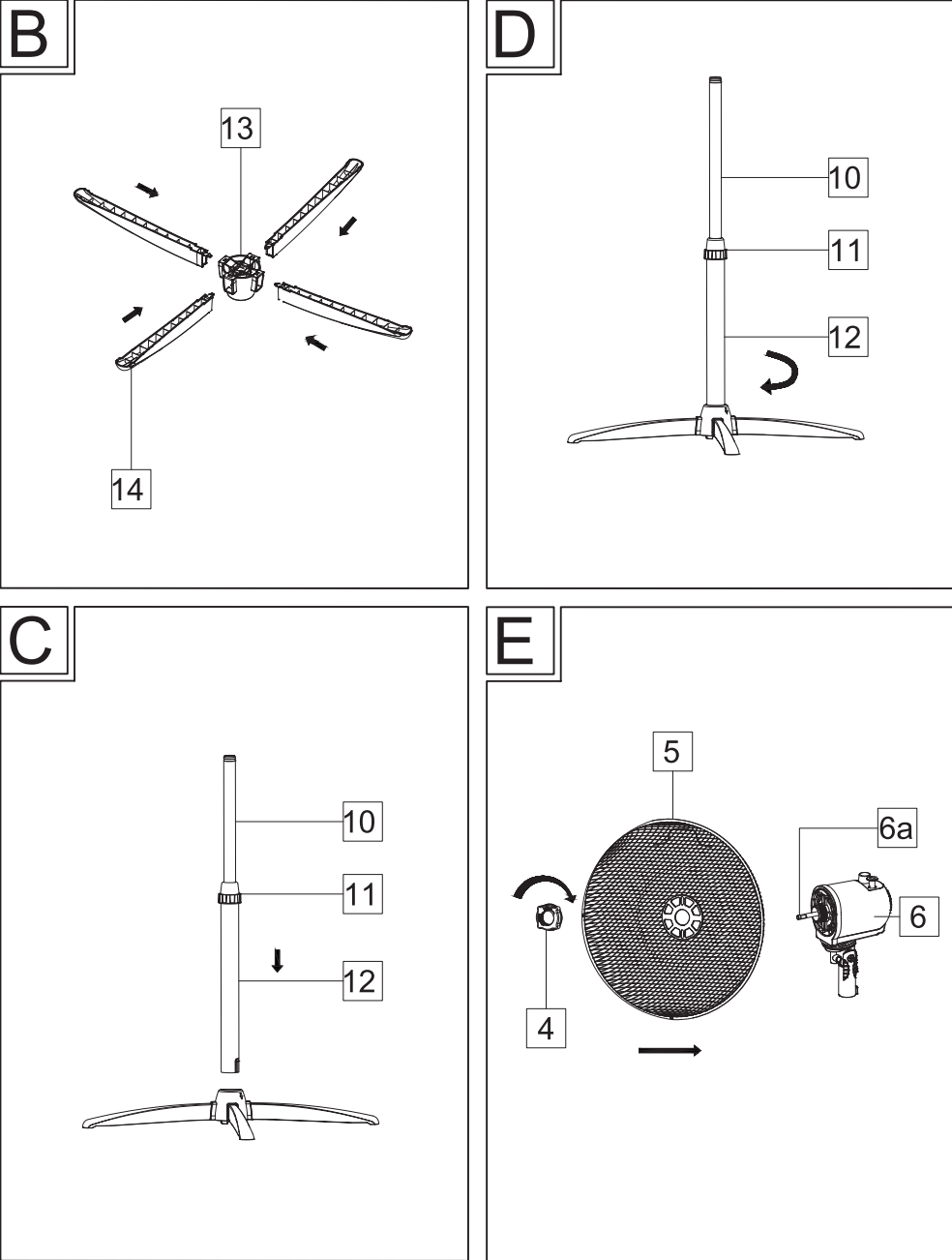
4

1. Front grill
2. Blade nut
3. Blade
4. Grill nut
5. Back grill
6. Motor front cover
 - 6a. Motor shaft
7. Swing knob
8. Power cable
9. Neck Screw
10. Inner Pipe
11. Pipe Lock
12. Outer Pipe
13. Base cover
14. Cross base
15. Grill safety screw and nut

ISSUE DATE 26/11/2022

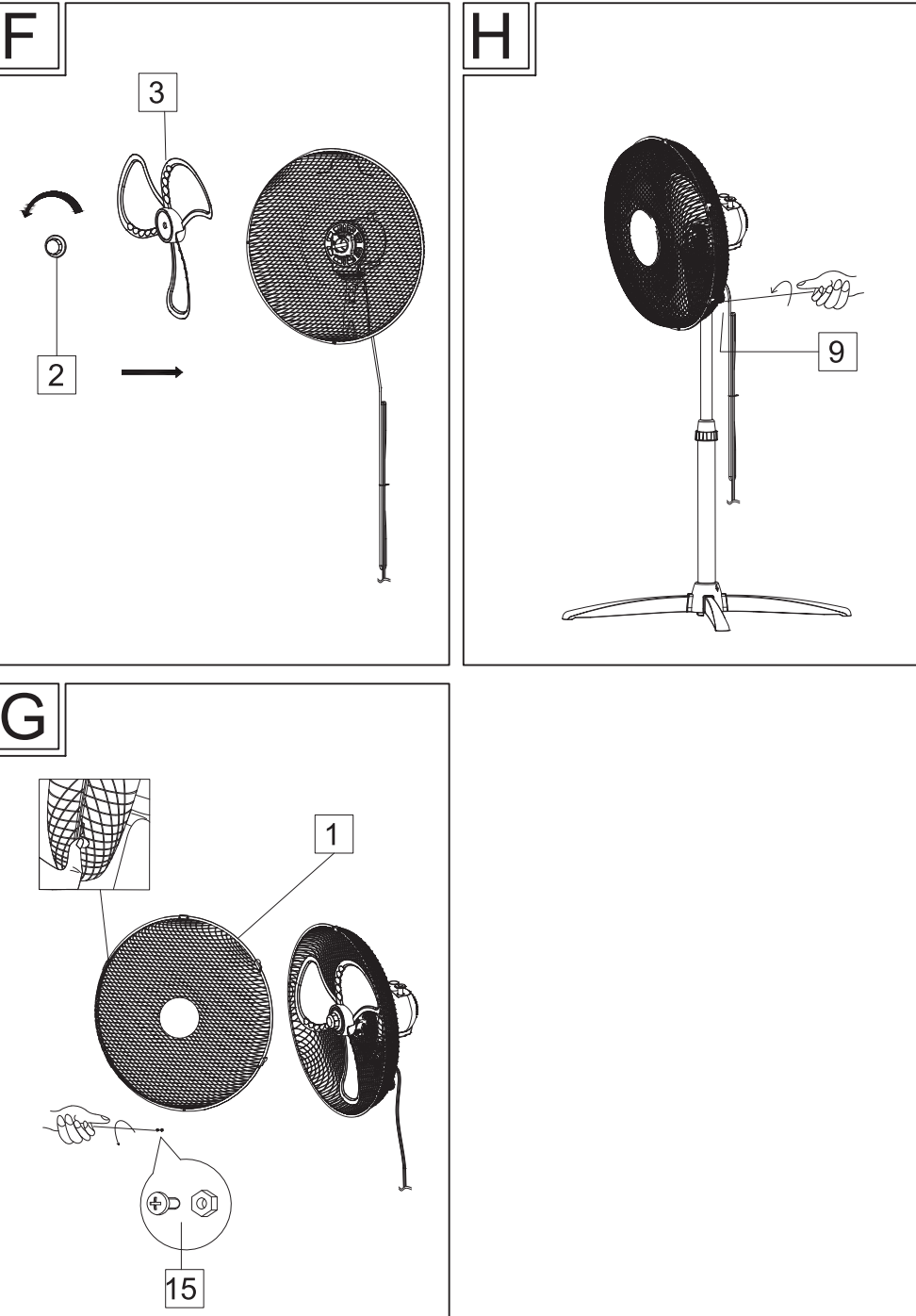
5

2. Assembly



ISSUE DATE 26/11/2022

6



ISSUE DATE 26/11/2022

7

- 2.1 Assemble the cross base @4pcs (14) to the base cover (13).
- 2.2 Assemble the fan pipe (10/11/12) to completed cross base, lock the pipe according to the arrow on the base cover (13).
- 2.3 Assemble the back grill (5) to the motor body by lock the grill nut (4).
- 2.4 Assemble the fan blade(3) by lock the blade nut(2).
- 2.5 Lock the front grill to the back grill by clip and also lock the grill safety screw with nut (15) by screwdriver.
- 2.6 Lock the control box screw (9) to fit the fan body with the base.

FAN OPERATION

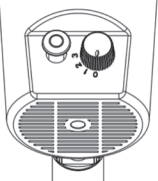
1.Voltage

Plug into any AC 220-240V~50-60Hz source, ensure that the plug and socket fit well.

2. Switch

Control the fan speed on the stand fan as below:

SYMBOL	FUNCTION
0	OFF
1	Low speed
2	Medium speed
3	High speed



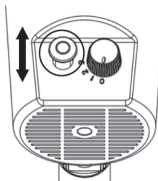
3. Oscillating (Swing) Function

The fan is fitted with an Oscillating function where when activated, the fan head will swing from side to side.

Push the clutch knob down to activate the oscillating function.

The fan head will swing from side to side whilst blowing air.

To stop the oscillation, allow the Fan head to move into the desired position and then pull the clutch knob up.



CLEANING AND MAINTENANCE

- Always unplug the fan from the mains supply before cleaning!
- Use only a piece of soft, damp cloth to gently wipe the outer surfaces of the fan to clean.
- Do not try to remove the fan grill. To clean between the bars, we recommend using a vacuum cleaner or compressed air to gently remove the dust.
- DO NOT immerse the fan in water and never allow water to drip into the motor housing.
- DO NOT use gasoline, paint thinner or other chemicals to clean the fan.
- For storage, cover or store in original box to protect it from dust. Store the fan in a cool, dry place.

CONNECTION TO POWER

- Before connecting, check that the voltage indicated on the appliance corresponds with the mains voltage in your home. If this is not the case, consult your dealer and do not use.
- This appliance may be fitted with a non-rewireable plug. If you need to change the fuse in a

ISSUE DATE 26/11/2022

8

non-rewireable plug, the fuse cover must be refitted. If the fuse cover is lost or damaged, the plug must not be used until a replacement is obtained.

- If the plug has to be changed because it is not suitable for your socket, or becomes damaged, the appliance should be disconnected from the mains power supply. The plug should be cut off and an appropriate plug fitted following the wiring instructions. The removed plug must be disposed of safely as insertion into a mains socket is likely to cause an electrical hazard.
- This equipment must be disconnected from the mains when not in use. Do not allow this unit to be exposed to rain or moisture.

For your own safety read the following instructions carefully before attempting to connect this unit to the mains.

You should only plug the appliance into a 220-240V AC, 50-60Hz supply. Connecting it to other power sources may damage the appliance



IMPFC
The BLUE OR BLACK WIRE(L) BROWN OR RED WIRE(L) s lead of this appliance may not correspond with the coloured markings identifying the terminals in your plug, proceed as follows:



Caution
To prevent electric shock disconnect from the mains before removing the cover

- The blue wire must be connected to the terminal marked with the letter N or coloured black
- The brown wire must be connected to the terminal marked with the letter L or coloured red. If a 13 Amp (BS 1363) fused plug is used it must be fitted with a 3A fuse conforming to BS 1362 and be ASTA approved.
- If in doubt contact a qualified electrician.



This symbol means the device is double insulated and earth connection is not required

ISSUE DATE 26/11/2022

9

TECHNICAL SPECIFICATIONS

Description	Symbol	Value	Unit
Maximum fan flow rate	F	51,29	m ³ /min
Fan power input	P	36,50	W
Service value	S _v	1,41	(m ³ /min)/W
Standby power consumption	P _{SB}	---	W
Off power consumption	P _{OFF}	0	W
Fan sound power level	L _{WA}	56,82	dB(A)
Maximum air velocity	C	2,42	meters/sec
Seasonal electricity consumption	Q	11,68	kWh/a
Measurement standard for service value	EN IEC 60879:2019		



RECYCLING ELECTRICAL PRODUCTS:

You should now recycle your waste electrical goods and in doing so help the environment. This symbol means an electrical product should not be disposed of with normal household waste. Please ensure it is taken to a suitable facility for disposal. Visit www.recycle-more.co.uk, click on "bank locator" and enter your postcode to find your nearest recycling site.



The CE mark signifies that this product has been assessed to meet the high safety, health, and environmental protection requirements of the harmonization legislation of the EU



ISSUE DATE 26/11/2022

10

Produced in China. Argos Limited, 489-499 Avelbury Boulevard, Milton Keynes, MK9 2NW.
Argos (UK) Ltd, Forestside Shopping Centre, Upper Galwally, Belfast, United Kingdom, BT8 6FX.
Sainsbury's Supermarkets Ltd, London, EC1N 2HT.
Sainsbury's (NI) Ltd, Forestside Shopping Centre, Upper Galwally, Belfast, United Kingdom, BT8 6FX.

ISSUE DATE 26/11/2022

11