



Spare Part Service Manual
Undercounter Retro Larder
MEUCLAR55BLK MEUCLARWHT
BC-130RBA



General method to replace gasket

Step 1
Pull gasket out from the
corner

Step 2
Install a new gasket,
starting from the corner.

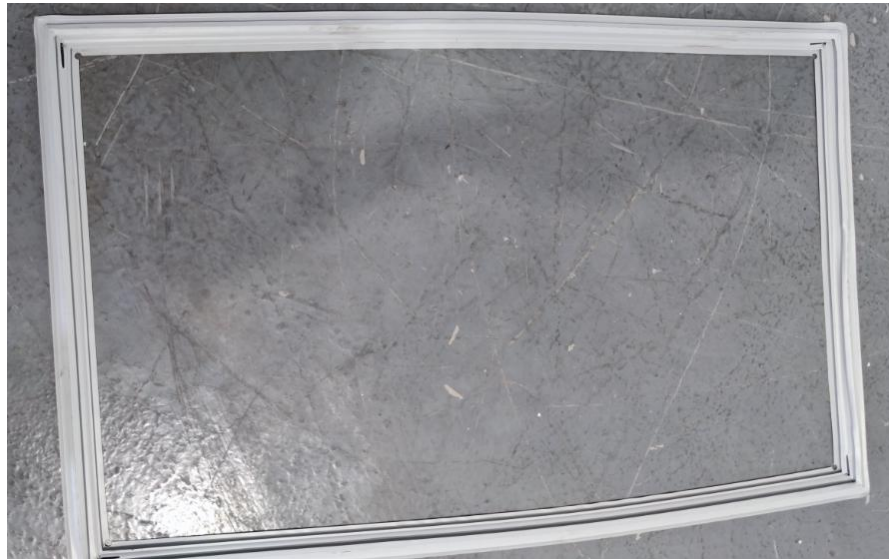




General method to replace gasket

Step 3
Make sure base of gasket is pressed into trough completely.

Step 4
Make sure gasket is properly aligned with edges of trough.



Step 5
After closing the door, make sure gasket is well attached to door.





General method to replace shelf

Step 1

Pull out and take the shelves out.



Step 2

Install the new shelves along the slots.





General method to replace door hinge

Step 1

Unscrew the screws on the door hinge.

Step 2

Replace with new hinge, fix the screws.





General method to replace handle

Step 1

Unscrew the screws on the handle,remove the old handle.



BUSH

General method to replace handle

Step 2

Put the handle into the two fixed screws, match the two holes on the handle.



Step 3

Install screws at the bottom of handle and fasten tightly.



BUSH

General method to replace lamp and PCB

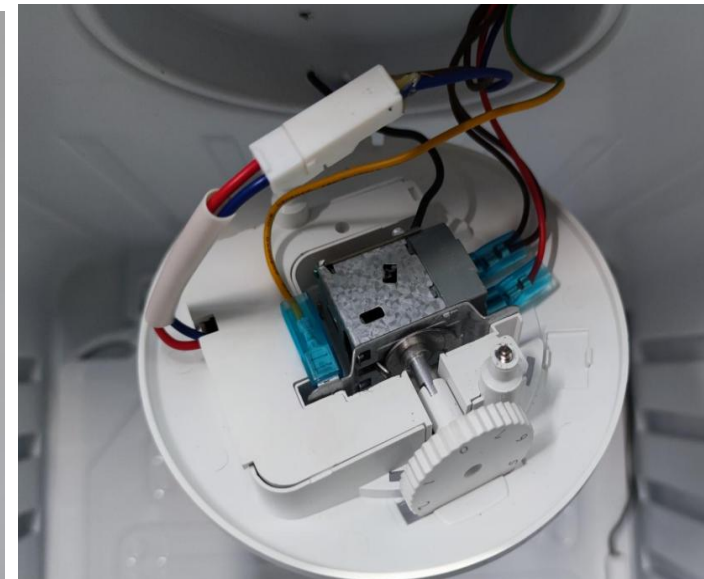
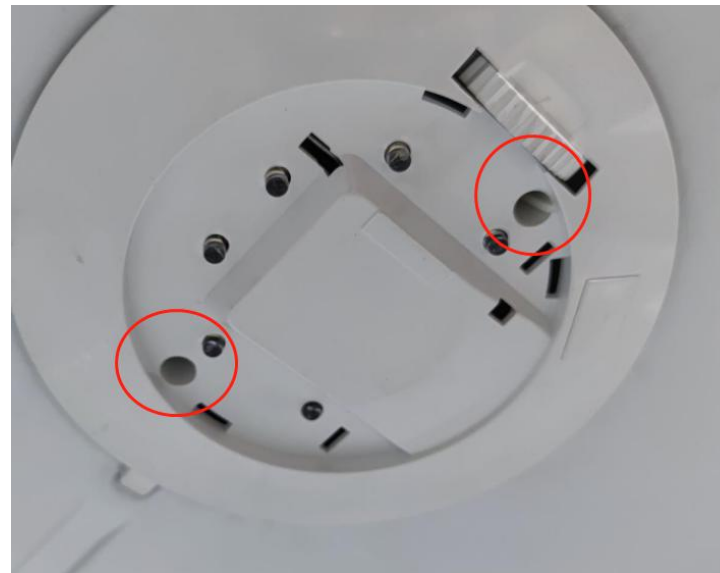
Step 1

Hold the lampshade with hand and turn it clockwise to the right to remove the lampshade.



Step 2

Unscrew the two screws circled in the photo, pull out the light base.

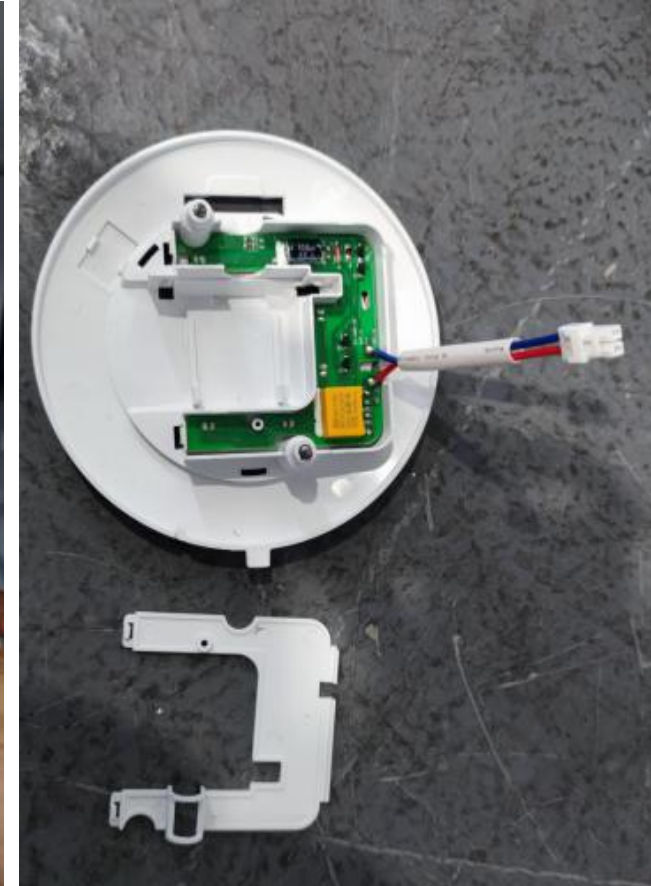


BUSH

General method to replace lamp and PCB

Step 3
Pull out the terminal on the light.

Step 4
Take down the cover on the light base.





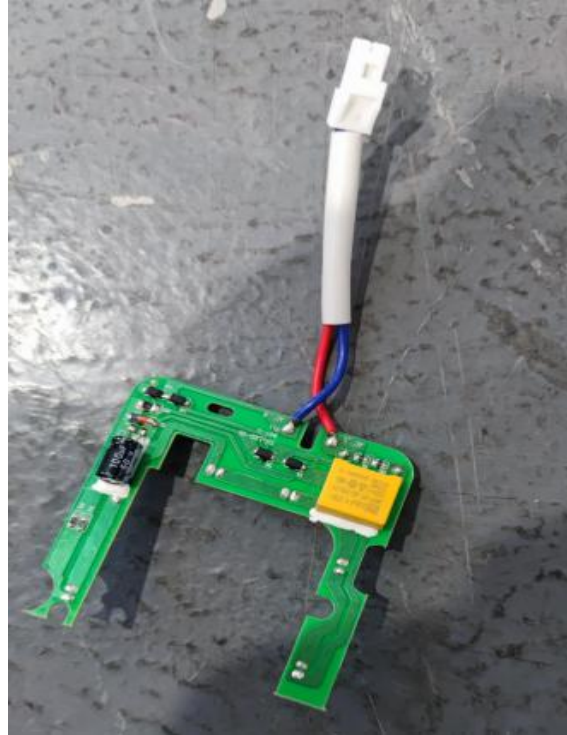
General method to replace lamp and PCB

Step 5

Pull out the PCB board inside the base slightly.

Step 6

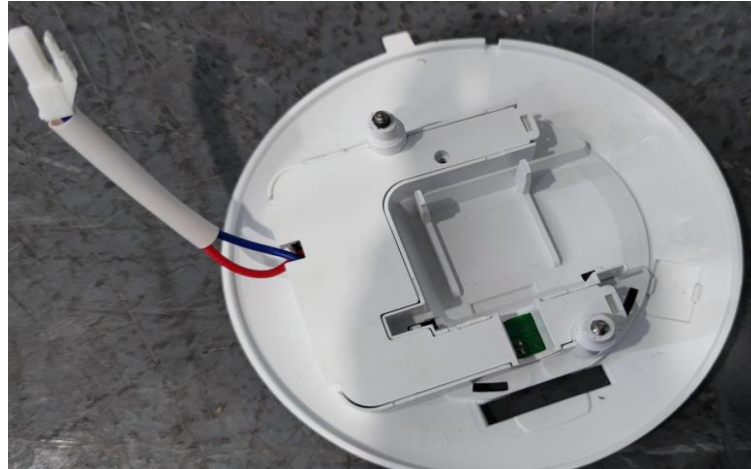
Replace the new PCB board, install back the PCB board into the base as in the photo.





General method to replace lamp and PCB

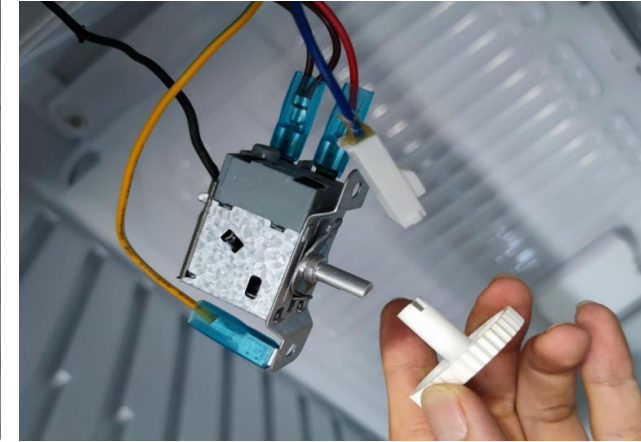
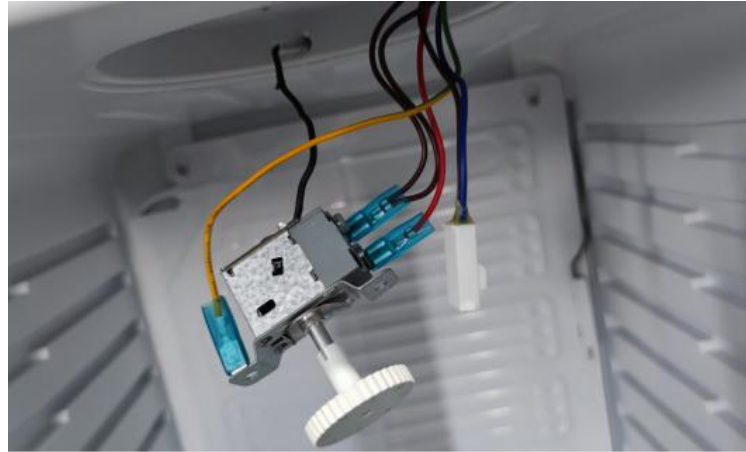
Step 7
Install the cover of the light base.



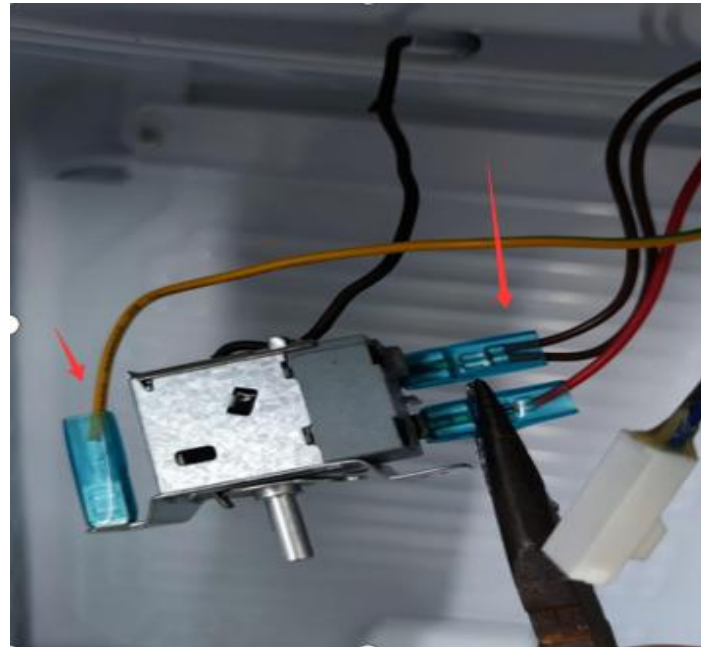
BUSH

General method to replace the thermostat

Step 1
Loose the thermostat knob.



Step 2
Unplug the three terminals in the photo.





General method to replace the thermostat

Step 3

Pull out the probe inside the fridge.



Step 4

Remove the four screws on the evaporator, then move and lean the evaporator forward slowly.





General method to replace the thermostat

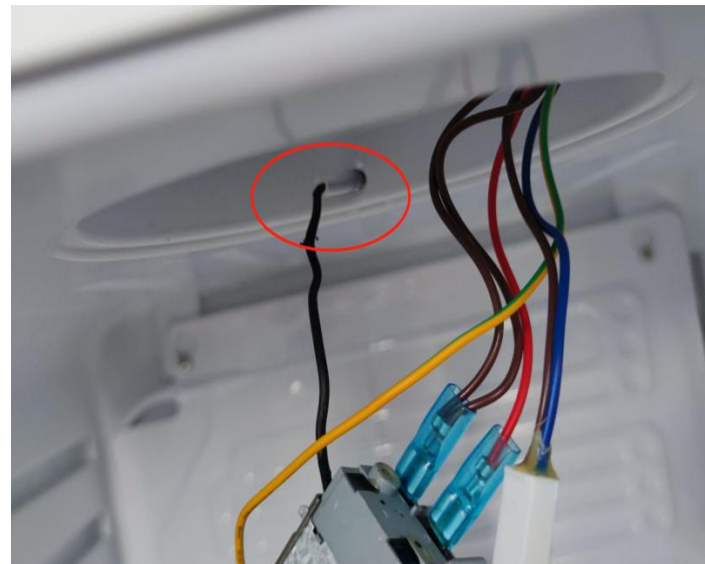
Step 5

Sort out and straighten the probe.



Step 6

Pull out the thermostat slowly.

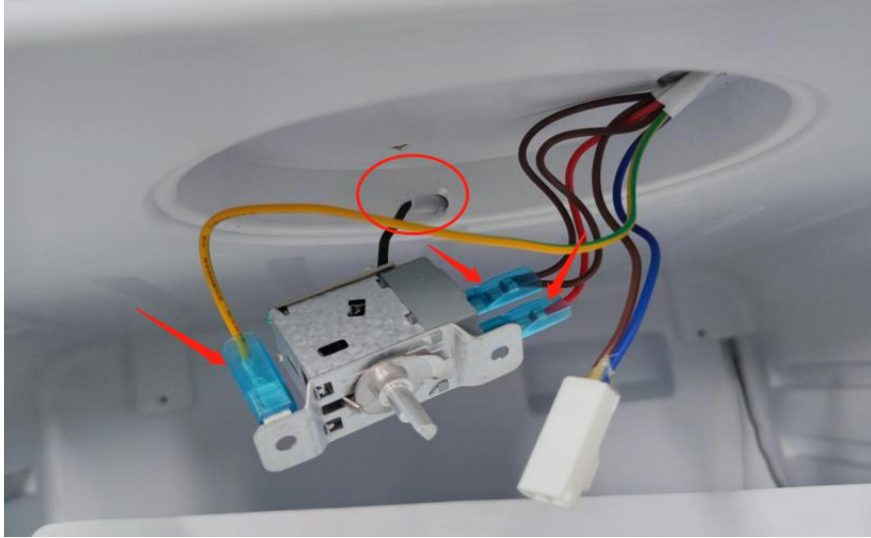




General method to replace the thermostat

Step 7

Replace new thermostat and connect the three terminals.



Step 8

Pull out the thermostat, can pull it with left hand while pushing from freezer inside with right hand together.



BUSH

General method to replace the thermostat

Step 9

After pulling out the thermostat, replace it with a new one, connect the corresponding terminals, and plug the probe from the hole position.



Step 10

Put the probe back.





General method to replace the thermostat

Step 11

Insert the probe into the temperature sensing tube and clamp it on the evaporator.

Step 12

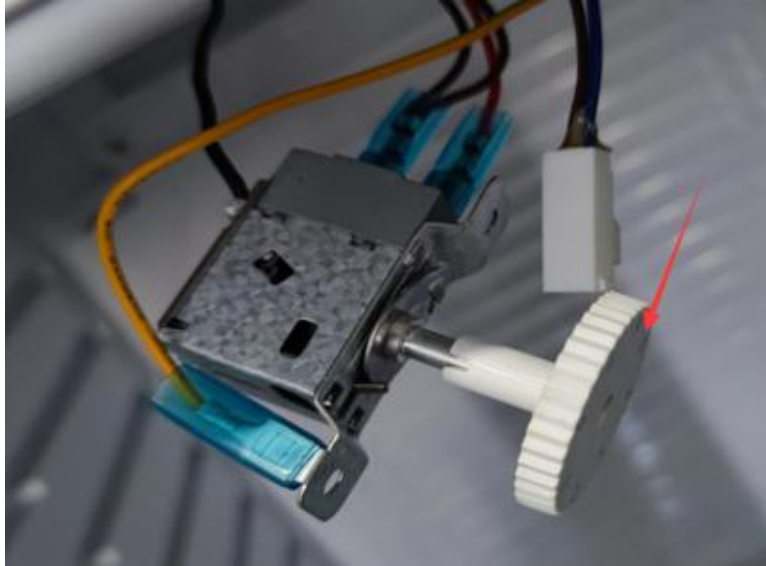
Install the four screws of the evaporator corresponding to the holes the previous removal.



BUSH

General method to replace the thermostat

Step 13
Turn the thermostat knob back.



Step 14
Connect the terminal.





General method to replace the thermostat

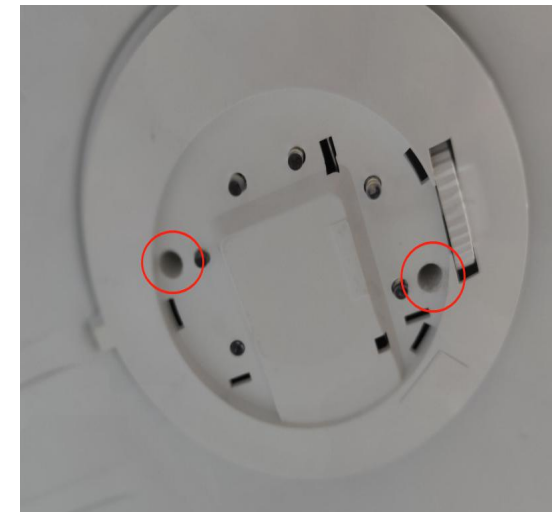
Step 15

Install the thermostat according to picture, sort out all parts in their positions.



Step 16

Sort out the wires inside, avoid the screw hole positions, install the protruding mark points of the lamp holder corresponding to the gap of the inner tank, and hold the light base by hand.

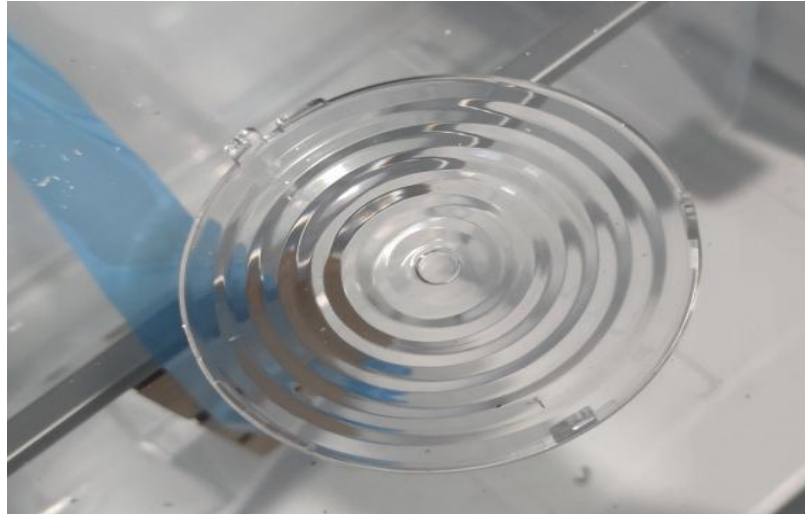




General method to replace the thermostat

Step 17

Install the lampshade, turn it counterclockwise to the left, make sure the lampshade is installed tightly.



BUSH

Finished inside and outside looks.

