

DOOR GASKET

BUSH



PROCEDURE

GENERAL METHOD TO REPLACE GASKET

Step 1

Pull gasket out from the corner.



Step 2

Install a new gasket, starting from the corner.

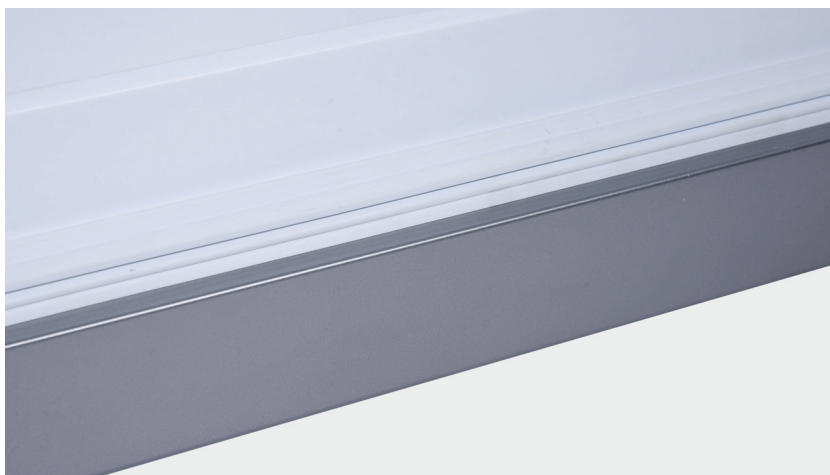


Step 3

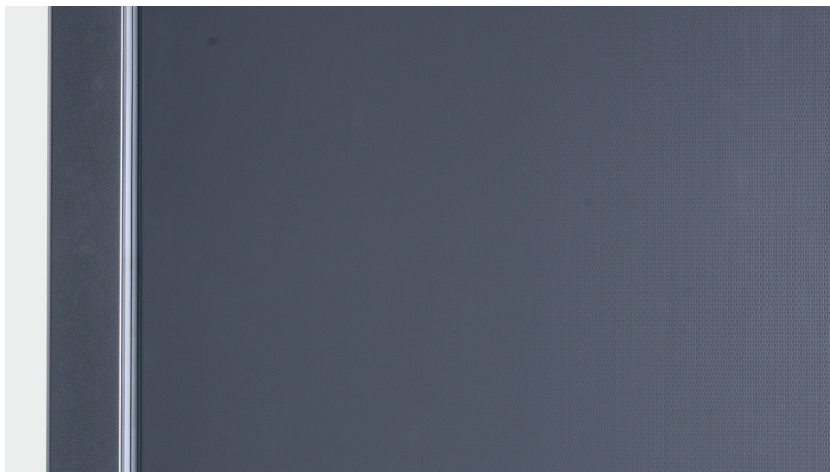
Make sure base of gasket is pressed into trough completely.

**Step 4**

Make sure gasket is properly aligned with edges of trough.

**Step 5**

After closing the door, make sure gasket is well attached to door.

**Note**

HINGE IS DAMAGED



RELIABILITY / HINGE IS DAMAGED

BUSH

DOOR BOUNCES AFTER CLOSING THE DOOR

WHY?

DOOR HINGE

WHY?

Priority: Door hinge is deformed or broken.

Check to see if the hinge is deformed or cracked, and whether screws are loose.

Follow technical sheet below to start to check



TOOLS



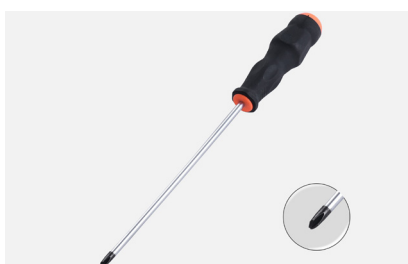
8mm Inner Hexagon Spanner



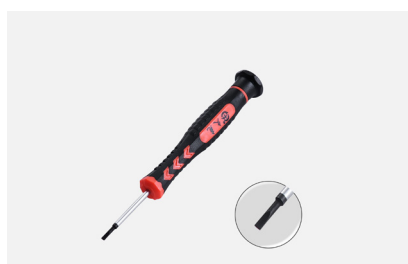
10mm Inner Hexagon Spanner



6x300 Slotted Screw Driver



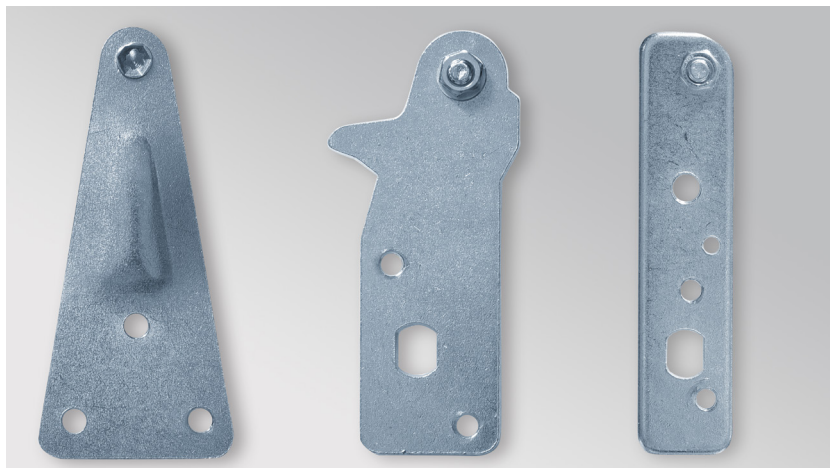
6x300 Cross-head Screw driver



2x100 Slotted Screw Driver

**CHECK AND TEST 1****Step 1**

Check to see if hinge and sleeve for hinge pin are damaged or not.

**DIAGNOSIS 1**

**CHECK TO SEE IF
THE HINGE OR SLEEVE FOR HINGE PIN IS DAMAGED
OR NOT.**

**If hinge is damaged, follow
procedures below to
disassemble door.**

**If sleeve for hinge pin on door is
damaged,**

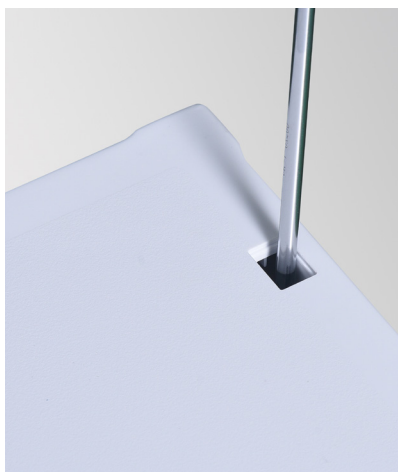
**Please follow steps below
to replace door.**

**PROCEDURE 1****GENERAL DISASSEMBLY PROCEDURES
FOR DOOR.****Step 1**

Prize up screw cover
(if any).

**Step 2**

Unscrew.

**Step 3**

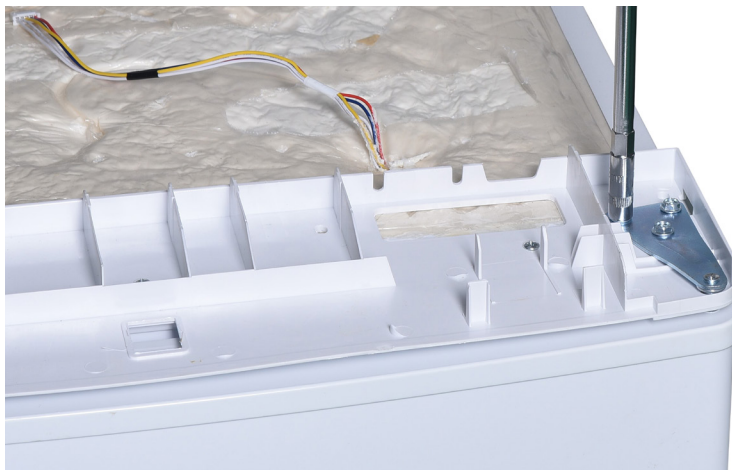
Push the top cover
(if any) forward.

**Step 4**

Take away the top
cover(if any).

**Step 5**

Unscrew 3 bolts and remove door hinge.

**Step 6**

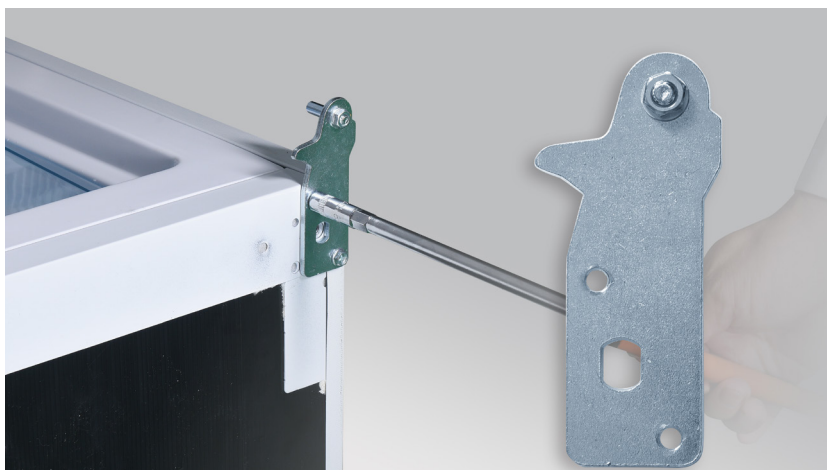
Remove the door.

**Step 7**

Lay down the cabinet and unscrew the adjustable foot.

**Step 8**

Unscrew 2 bolts and remove bottom hinge.





PROCEDURE 2

REVERSE PROCEDURE 1 TO REINSTALL HINGES AND DOORS, HOWEVER, PLEASE PAY ATTENTION TO POINTS BELOW.

Tip 1

Don't forget to add washer onto hinge pin (if there is one).

Tip 2

When installing door onto hinge, please check the alignment between door-stopper and hinge.

Tip 3

Make sure gasket is properly attached.

Tip 4

Make sure the door is parallel to the cabinet.

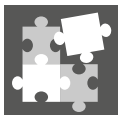


INTERNAL ACCESSORIES



BUSH

**If internal accessories are damaged, replace them.
Pay attention to the disassembly and installation of evaporator frame.**



PROCEDURE 1

GENERAL METHOD TO DISASSEMBLE EVAPORATOR FRAME

Step 1

Remove drawer.





Step 1

Prize up the buckle.



Step 2

Pull out the frame.



PROCEDURE 2

REVERSE PROCEDURE 1 ABOVE TO INSTALL A NEW FRAME.

Note
