

Easy replacements

Fit for models:

BUSH WDNSX86B WDRYER BLK

BUSH WDSAE107B 10/7 WD BLK

BUSH WDSAE107W 10/7 WD WHT

BUSH WDSAE86W WD WHT

BUSH WDSAEINT86 INT 8/6KG WD

BUSH WMSAEX1016W 10KG WM WHT

BUSH WMSAEX1214 12KG WM WHT

Precautions

When performing troubleshooting or part replacement during servicing, note the following safety precautions:

1. Use authorized Parts
2. Always use the same part as suggested by the distributor
3. Assure plug is removed from socket
4. Assure water drained away before opening the door

Replace the drawer

Replace the drawer



Detergent drawer is in the left up side

Replace the drawer



Replace the drawer and put in new item the same way

Replace the door

Replace the Door



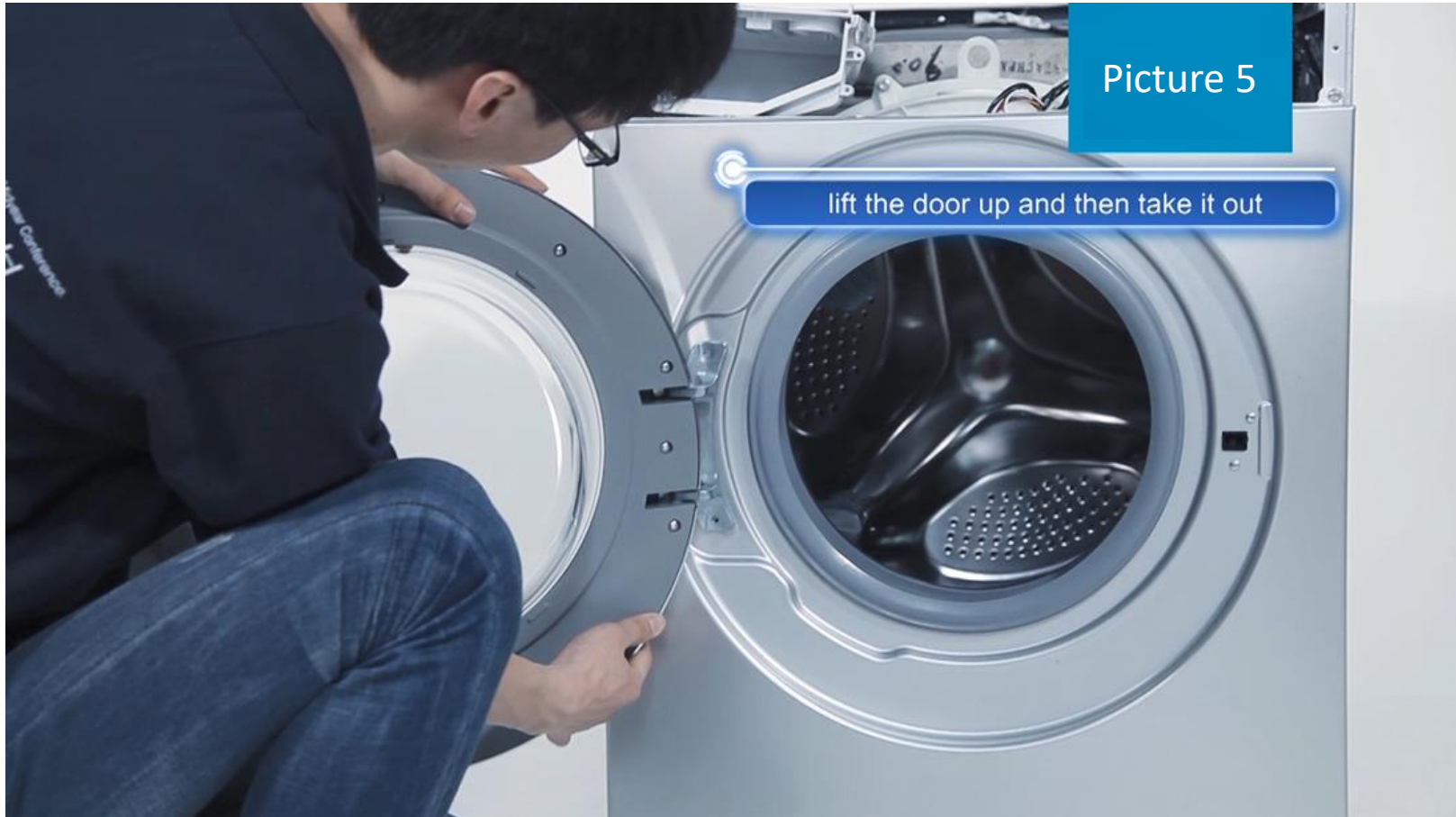
Replace the door assembly

Replace the Door



Unscrew two units here

Replace the Door



Lift the door and remove it. Put in a new item the same way

Replace the hinge

Replace the Door



Picture 6

Unscrew the door nut

Remove all the door nuts

Replace the Door



Can take the hinge out and replace it in the same way

Replace the Door gasket

Caution: In order to avoid any hazard, the door gasket is highly recommended to be replaced by a qualified person. Contact the service agent at 0345 257 7271.

Replace the Door gasket



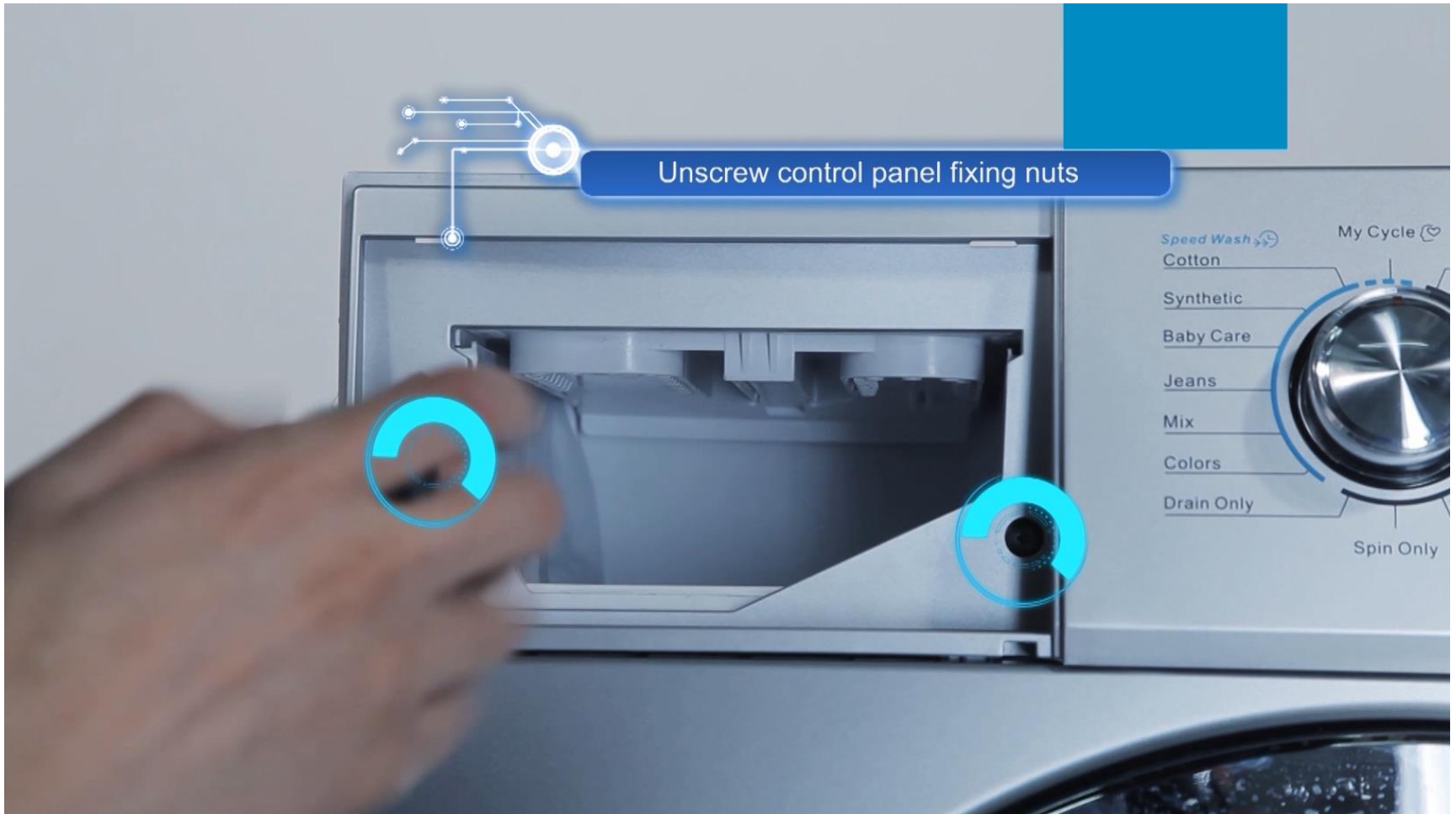
Remove top cover nut

Replace the Door gasket



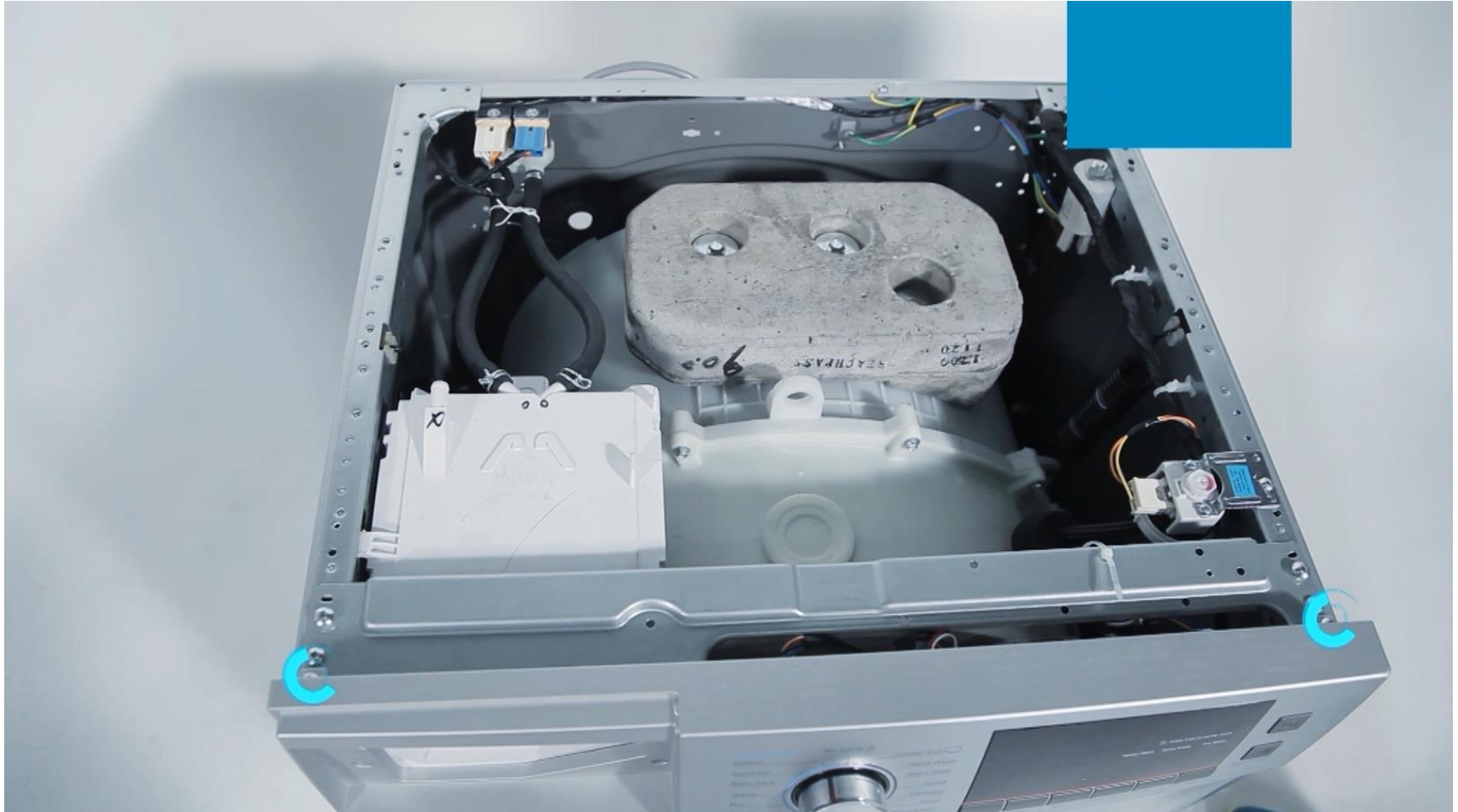
Remove drawer

Replace the Door gasket



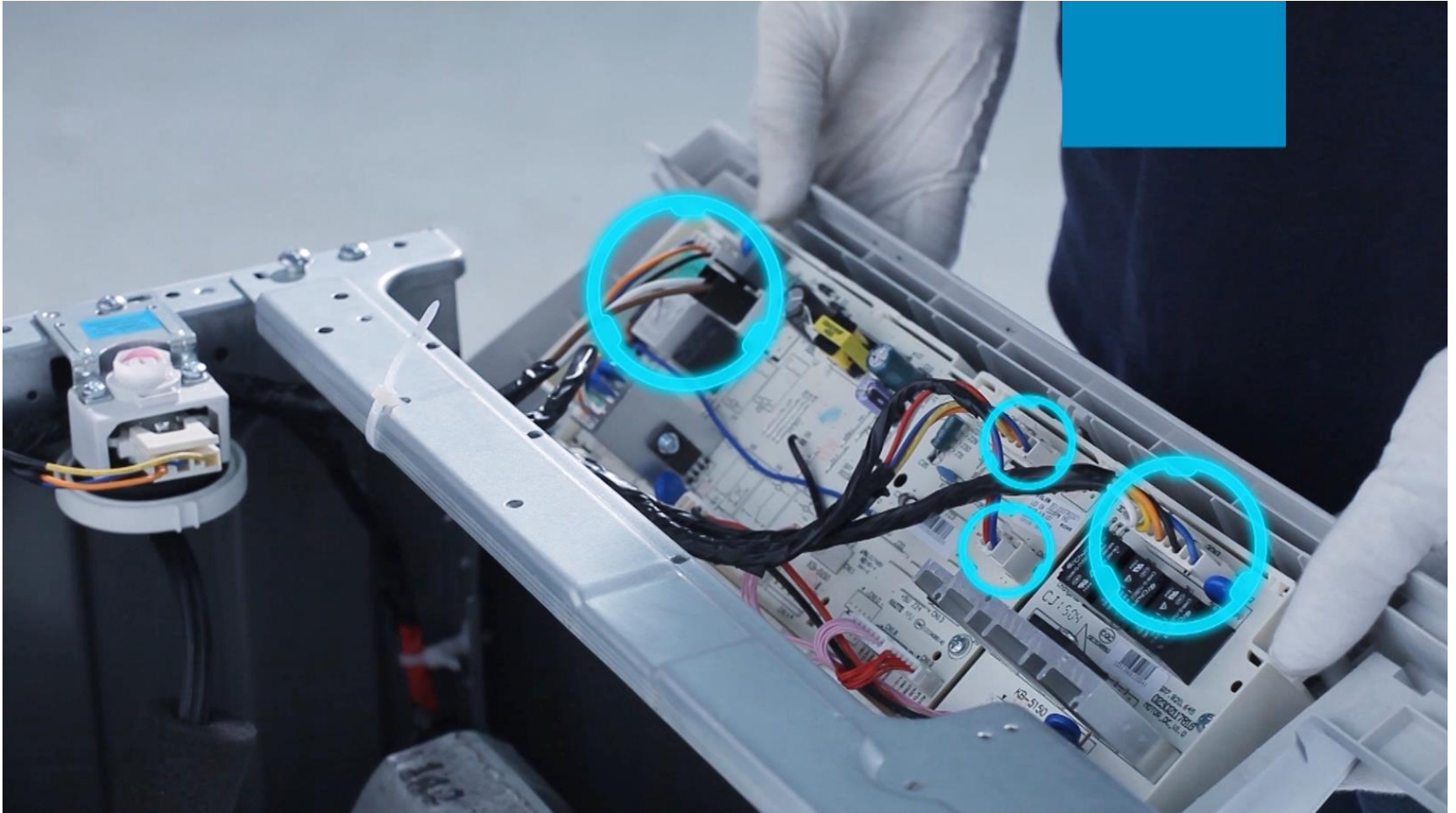
Remove control panel screws –front side

Replace the Door gasket



Remove control panel screws –top side

Replace the Door gasket



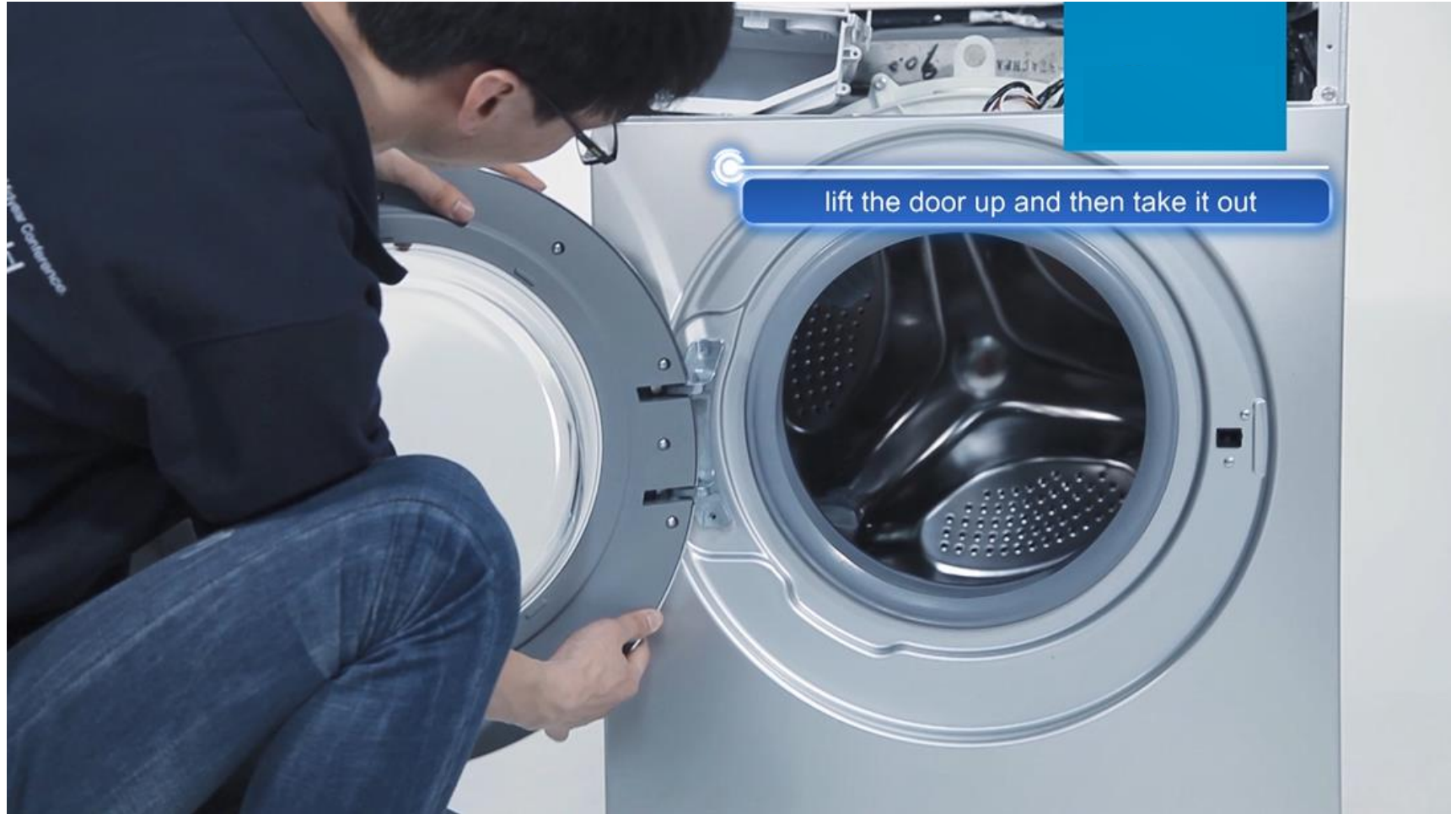
Unplug the connector and remove control panel assembly

Replace the Door gasket



Unscrew two door nuts

Replace the Door gasket



Remove the door

Replace the Door gasket



Pull gasket, remove the gasket clamp out side

Replace the Door gasket



Loose door lock screw and remover door lock

Replace the Door gasket



Loose front cabinet screws – lower side

Replace the Door gasket



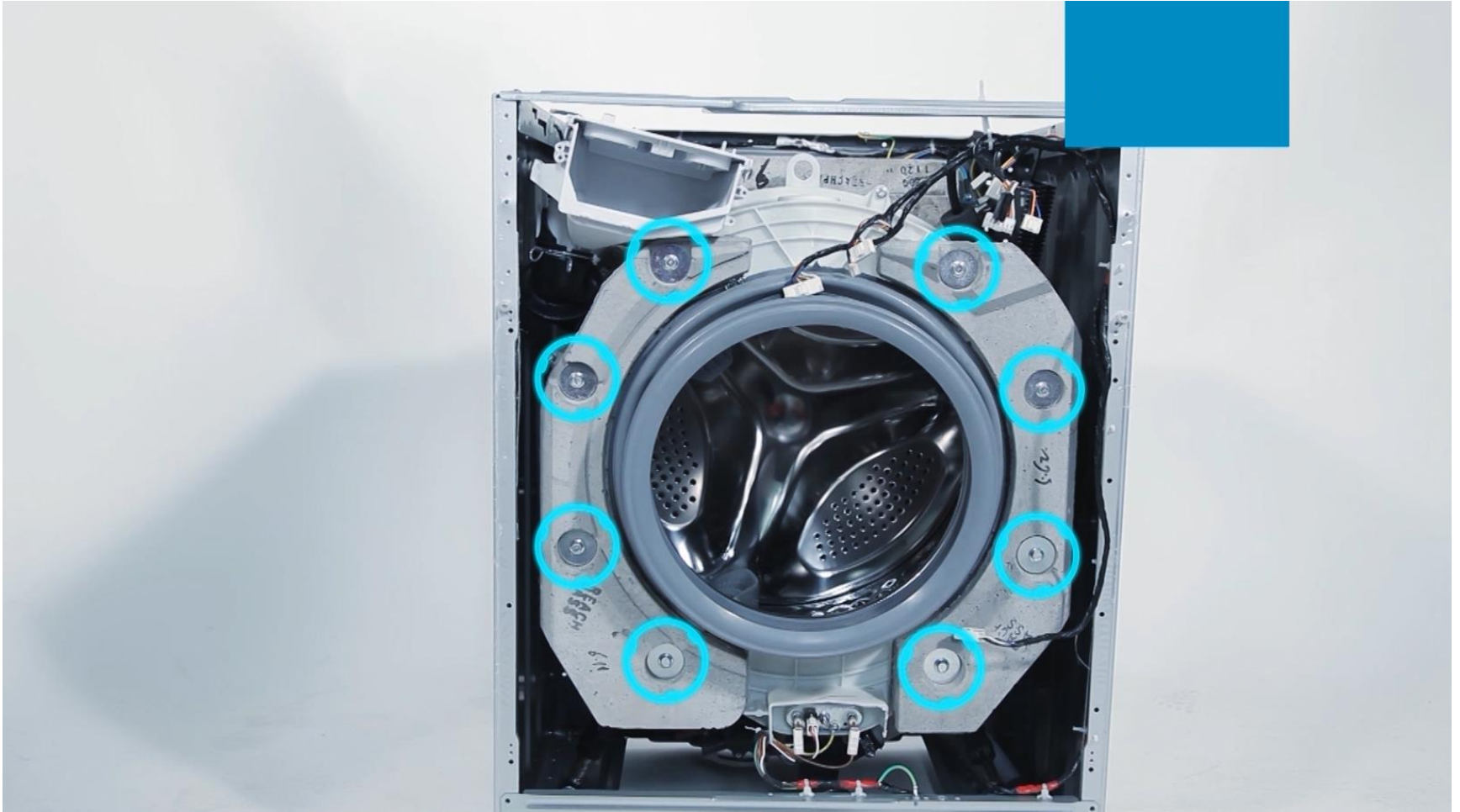
Loose front cabinet screws – upper side

Replace the Door gasket



Lift the front cabinet and remove it carefully

Replace the Door gasket



Loose balance weight screws

Replace the Door gasket



Remove balance weight

Replace the Door gasket



Loose clamp screw

Replace the Door gasket



Take off gasket. Replace by a new one