

BUSH

Customer Service Manual

BUSH MEBI55177FE
BUSH MEBI55177FRZE
BUSH MBI55177F
BUSH MEBI55177FRZ
BUSH MEBI55177



Customer service manual

Contents

Precautions	2
Tools for disassembly and reassembly	4
Door gaskets	5
Door basket.....	6
Glass Shelf.....	7
Foldable Glass Shelf Change	8
Door hinge	9
Additional Support.....	10

Precautions:

Always follow safety advice.

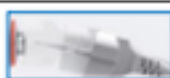
Always switch off and unplug the appliance before attempting to remove any part.

Always wear appropriate protective equipment when carrying out any work.

Always use the correct tools for carrying out any work.

Some repairs may not be suitable for unqualified users to carry out. If in doubt seek the advice of a profession repairer.

SAFETY PRECAUTIONS



Before any disassembly/repair operation make sure appliance is unplugged, water tap is closed and heating elements are cooled down. There is electrical shock, burning and flood risk.



Please replace whole cable group even in case there is any minor failure with cables / terminals / sockets. Never try to repair nor to solder cable group. It may cause smoke, ignition and there is major risk of electrical shock.



Straightly pull out or insert the terminals.
Do not twist it. It may be the cause of damage or ignition.



Always use insulator gloves to prevent injury by metal edges or to prevent electrical shock during electrical tests.
Work with uniforms having long sleeves to protect your arms from metal edges.



Always use original spare parts. You may harm appliance, end user, environment or yourself using untested and unapproved 3rd party spare parts.



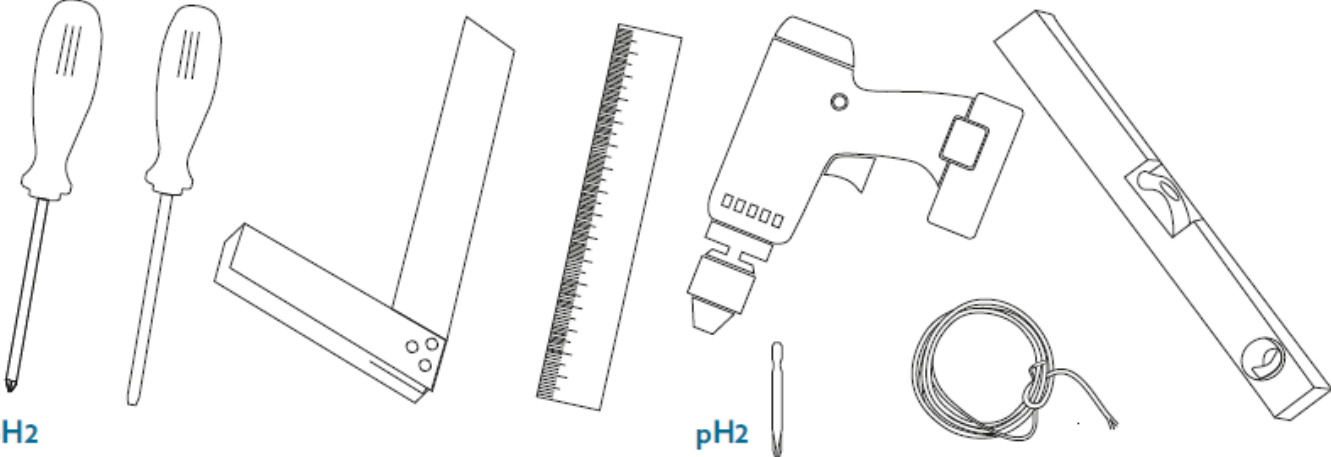
Use right tools to prevent any wear or damage to components during assembly/disassembly.



Do not touch any rotating object with hand unless it stops completely. Slow rotation may also roll in your hands and cause injury.



Rebuilding is prohibited. Do not rebuild machine parts and components when repairing service. It may be the cause of damage or ignition.

REPLACEMENT PROCEDURE	Applicable models	EN
General		
Part name	Tools for disassembly and reassembly	
 <p>The image shows a collection of tools used for disassembly and reassembly. On the left, there are two screwdrivers with Phillips heads. Next to them is a long, thin pry bar with three small circles near one end. In the center is a comb with fine teeth. To the right of the comb is a heat gun with a trigger and a nozzle. Below the heat gun is a small screwdriver. To the right of the small screwdriver is a coiled cable. On the far right is a long, thin level with a bubble level in the middle.</p>		

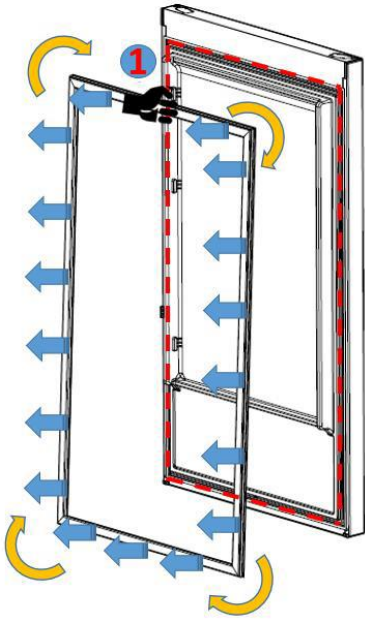
REPLACEMENT PROCEDURE	Applicable models	EN
-----------------------	-------------------	----

General

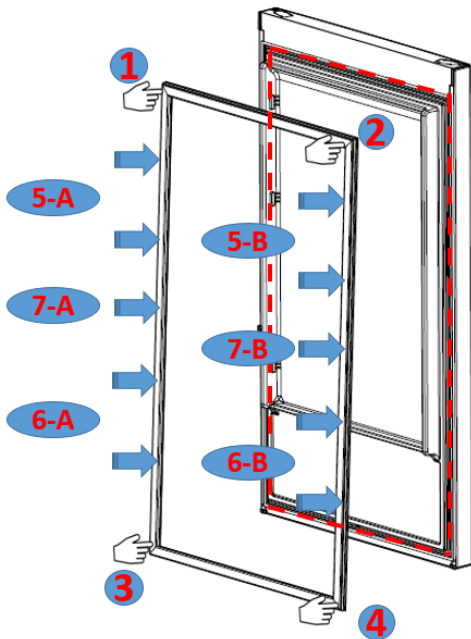
Part name

Door gaskets

Pull the gasket towards starting from top right corner. Slowly pull the rest of the gasket. Completely remove the gasket from door.



Check the replacement gasket from starting with upper right corner, press on the gasket until it fits to its place. Place the other sides of the gasket with the help of your thumb



After the replacement check if there any non-fitting point on the gasket. Also check if there any opening at the gasket while the door is closed. If so that might cause condensation/icing or insufficient cooling/freezing. To prevent this soften the form of the gasket with the help of a hair dryer or hot water and make sure that all points are closing perfectly.

REPLACEMENT PROCEDURE	Applicable models	EN
--------------------------	-------------------	----

General

Part name	Door basket
-----------	-------------

First pull the basket out until it reaches end position. Then, gently pull front side up until frees from its guides on the sides. Finally continue pulling it out and remove it from place.

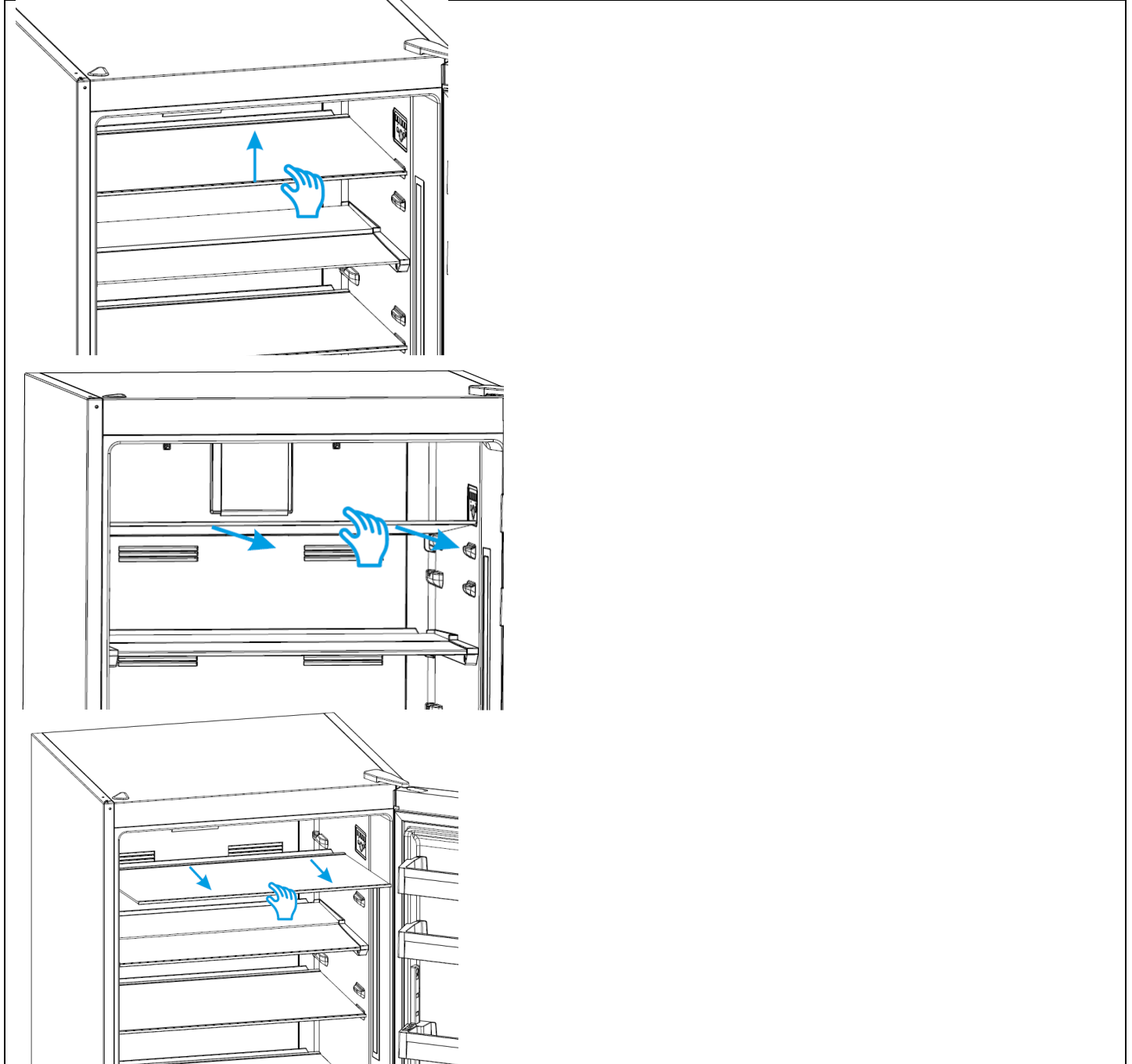


REPLACEMENT PROCEDURE	Applicable models	EN
------------------------------	--------------------------	-----------

General

Part name	Glass Shelf
------------------	--------------------

First gently lift the front side of glass up. Then you can pull the glass out by directly pulling towards yourself.



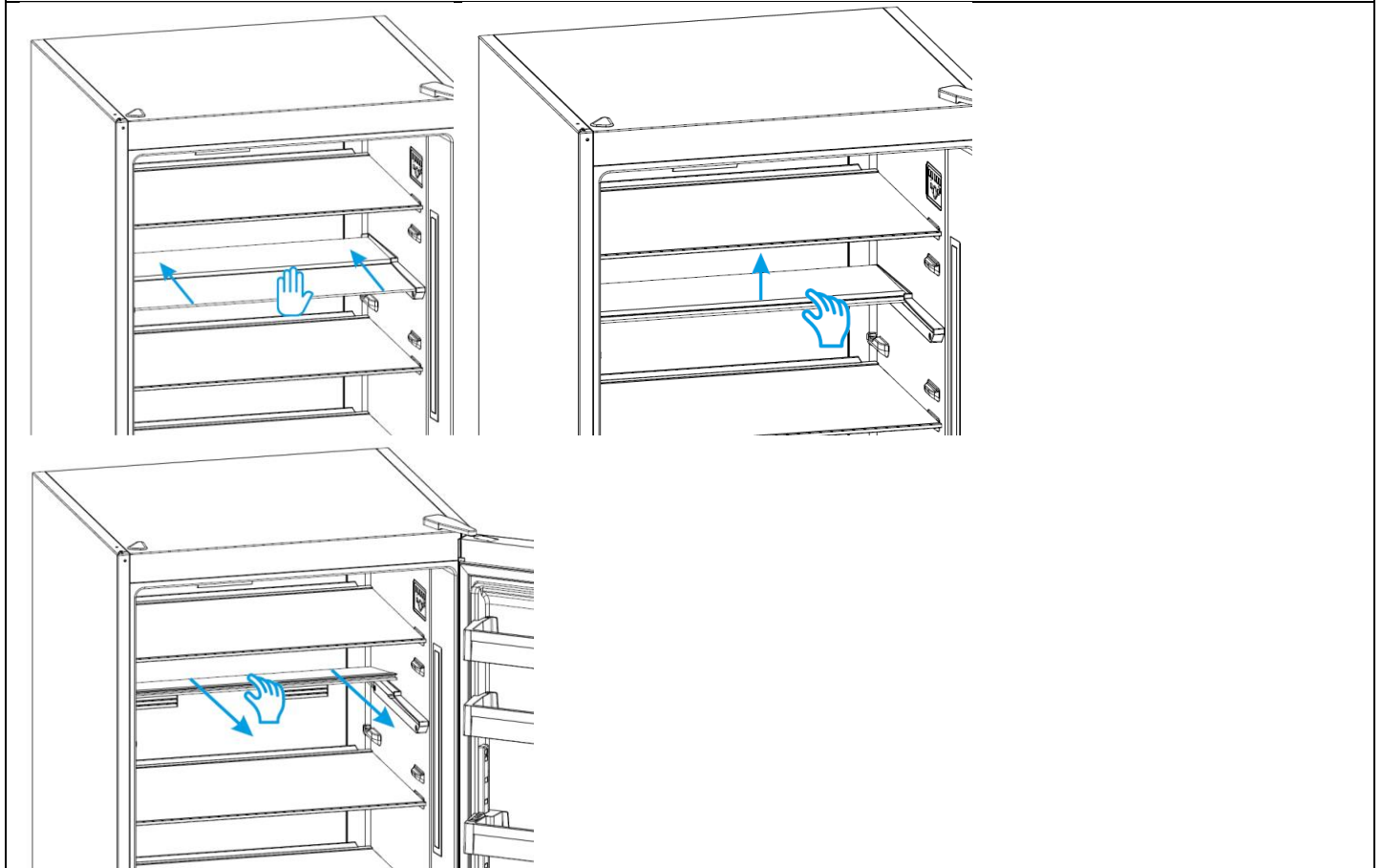
REPLACEMENT PROCEDURE	Applicable models	EN
------------------------------	--------------------------	-----------

General

Part name

Foldable Glass Shelf Change

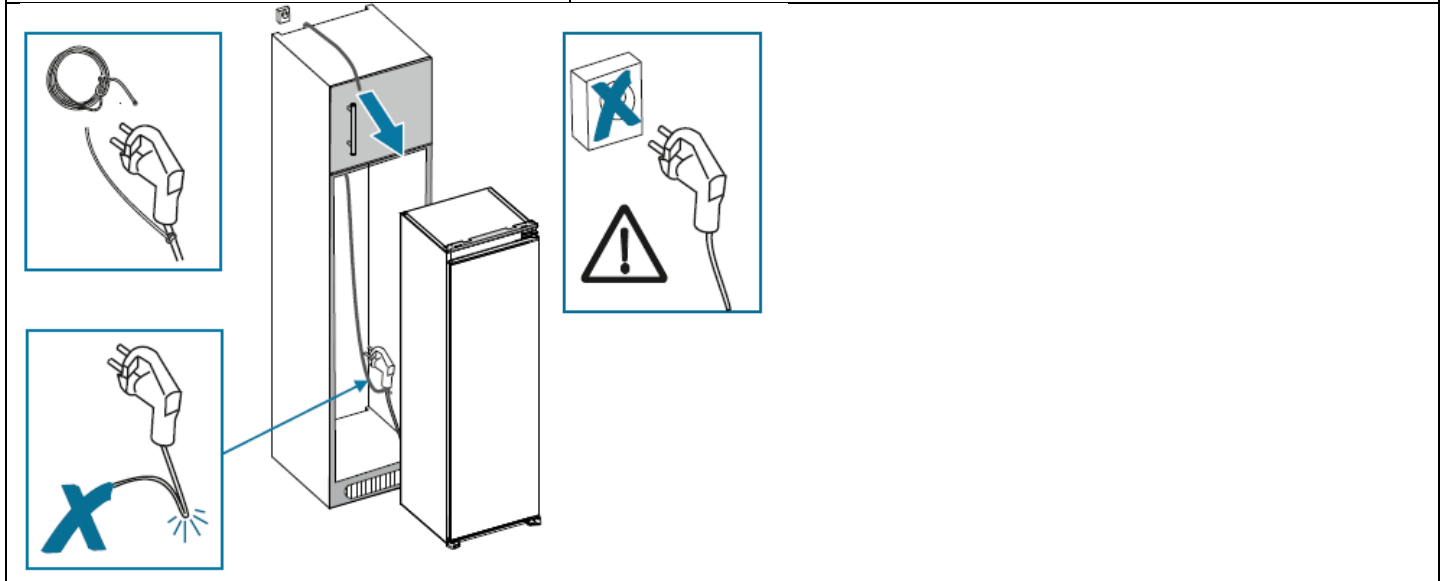
First push the glass in front to all the way back. Then gently lift both glasses up together. Now you can pull glasses out by directly pulling towards yourself.



REPLACEMENT PROCEDURE	Applicable models	EN
------------------------------	--------------------------	-----------

General

Part name	Door hinge
------------------	-------------------



Remove upper hinge



Remove bottom hinge



Reverse the above steps to install the new hinges.

Additional Support	Applicable models	EN
	General	

The following parts are available for the customer to undertake repairs at their own risk. Please carefully follow the guidance given in this manual including all safety measures.

- Door
- Door hinge and seals
- Other seals
- Door locking assembly
- Plastic peripherals such as detergent dispensers

Parts can be obtained by calling the support service listed in this section. All repairs in this manual can be achieved using commonly available tools.

If you are in any doubt of your ability to carry out a repair, please use a professional service, also available through the support service.

Damage sustained to the appliance or future faults arising from poorly carried out repairs will not be covered under warranty

Help and assistance

If you require any technical guidance or find that your washing machine is not operating as intended, a simple solution can often be found in the **Troubleshooting** section of these instructions or online at www.bush-support.com

If you still require further assistance, call one of our experts on **0345 257 7271***. To help give us give you a fast and efficient service please have the following information ready:

Model Ref.

You can find these on the rating plate - a small information panel (usually a sticker or metal plate) on the rear of your appliance

Serial number

Date of purchase

This will be shown on your receipt

Local call rates applies*

Lines open 8am-7pm Monday to Saturday and 10am-4pm Sunday.

*Calls to Bush enquiry lines may attract a charge and set up fee from residential lines depending on your call plan/tariff. Mobile and other providers costs may vary, see www.bt.com/pricing for details.

For Security and training purposes, telephone calls to and from customer service centres maybe recorded and monitored. Calls from Republic of Ireland will attract international call charges.