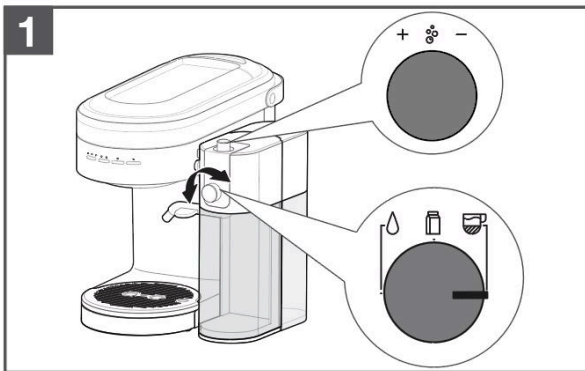


How to Froth Milk Using Milk Frother Attachment

Using Milk Frother Attachment to Froth Milk

1. Align the Function knob to Froth milk function. Rotate the Froth level adjustment knob to the desired level.
NOTE: For the Froth level adjustment knob, it is suggested to start with 90 Degrees rotation from the screwed down location.



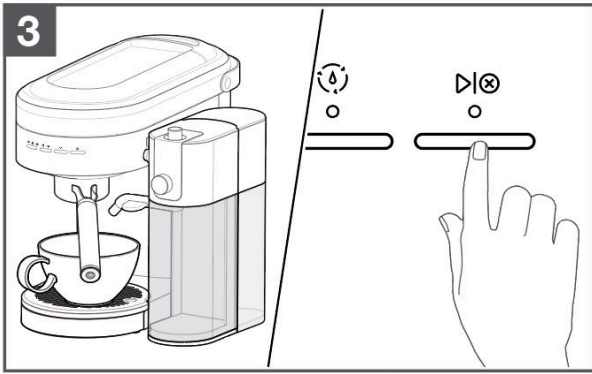
2. Turn On the Espresso Machine and toggle the Mode button to select Steam. Toggle the Dose button to 1 or 2 (1 for less milk and 2 for more milk).



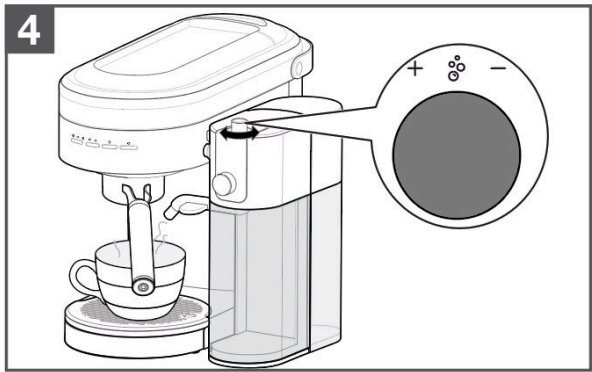
3. Place the desired cup below the Portafilter and Milk dispenser. Press the



button on the Espresso Machine to start the cycle.



4. Froth level can be adjusted throughout the automatic frothing cycle by rotating the Froth level adjustment knob.



Still need help? Contact us or schedule service.

Please contact us or click below to make an appointment from our preferred list of service providers for service on your appliances.

United States

[Schedule Service Online](#)

[Contact Us](#)

Canada

[Schedule Service Online](#)

[Contact Us](#)

Interested in purchasing an Extended Service Plan?

Please click below to learn more on how you can save up to 25% on New Appliance Extended Service Plans within 30 days of your appliance purchase.

United States

[Extended Service Plans](#)

Canada

[Extended Service Plans](#)