

vax
ONE
PWR
CORDLESS

VAX Glide 2

Hard Floor Cleaner



Welcome to the Vax family!

You are now the proud owner of a VAX Glide 2. Here, you'll find everything you need to know about your machine and, most importantly, instructions on how to get started so that you can get cleaning!



Weight 5.3kg (without battery pack).
Water/Solution tank capacity 1L. Dirt water tank capacity 0.75L.
Runtime and charge time dependent on battery pack and mode used.
*Battery and charger included with models CLHF-G2KS & CLHF-G2DS only.
Subject to technical change without notice. Images are illustrative only.

Quick Start

Please read 'Getting Started' section before first use.

1 Assembly

Attach the handle to the machine.



2 Charging the battery

Fully charge the battery before first use



Press the battery symbol to check the battery status



3 Add water and solution

Fill the tank with water and solution.



4 Operation

Press the ON/OFF button. Press the trigger on the handle to release water and solution.



Registration and Support

All ONEPWR products come with a standard one year warranty

Register your product to receive 2 YEARS FREE additional warranty[†]

For details visit: vax.co.uk/registration

Scan here



For help and support with your new product

or visit us online: support.vax.co.uk

Still need to get in touch?

Our UK based Customer Care Team are here to support you. For help with assembly, operational or performance problems, or buying and fitting new accessories, you can find all our contact details at vax.co.uk/contact

This user guide can be found online at: support.vax.co.uk

[†] Registration required. Terms and conditions apply, see vax.co.uk for details.

Warranty and technical

Warranty

If a Vax machine is used in the way it is intended and it breaks down within the guarantee period, it's our responsibility to repair or replace it.

Here's what isn't covered:

- Normal wear and tear of consumable items, for example: belts, filters, brushbars, fuses etc.
- Batteries which have become faulty as a result of improper handling.
- Batteries which have a reduced service life as a result of normal wear.
- Accidental damage
 - Damage as a result of use not in accordance with the product user guide.
 - Damage caused by not carrying out regular maintenance.
 - Damage to the charger cable.
 - Blockages caused by misuse.
- Faults caused by:
 - Negligent use, misuse, neglect or careless operation of the machine.
 - Use of the machine cleaner which is not in accordance with the user guide.
 - Use of a Vax machine for anything other than normal domestic household purposes in the country in which it was purchased.
 - Use of parts, accessories and consumables, which are not genuine Vax components.
 - Faulty installation or repairs – unless carried out by a qualified electrician or engineer.

Technical

Statement of Compliance: Manufacturer/EU importer: Vax Limited, hereby on our own responsibility, declare that the **VAX Glide 2** is manufactured in compliance with the following Legislation: Safety: 2014/35/EU Low Voltage Directive/Electrical Equipment (Safety) Regulations 2016. EMC: 2014/30/EU Electromagnetic Compatibility Directive/ Electromagnetic Compatibility Regulations 2016.



Waste electrical products should not be disposed of with household waste. Please recycle where facilities exist. Check with your Local Authority or retailer for recycling advice.

VAX is a trade mark of Techtronic Cordless GP.

© 2022 Techtronic Cordless GP. All rights reserved.

Vax Ltd, Artillery House, Heritage Way, Droitwich, WR9 8YB, UK.

Charging the battery

THIS MACHINE IS ONLY TO BE USED WITH VAX ONEPWR BATTERIES AND CHARGER. PLEASE READ THE SAFETY GUIDE BEFORE USE.

NOTE: Before first use, ensure the battery is fully charged. Failure to fully charge the battery before first use may result in poor battery performance. The life expectancy of the battery will vary depending on the usage of the machine.



Plug the charger into the mains.



Slide the battery on to the charger.



The battery lights will flash white to indicate the battery is charging. The battery lights will illuminate in turn until all four lights are illuminated and the battery is charged. When fully charged the lights will go out.



To check the battery charge level press the battery symbol.



When fully charged, press and hold the side buttons and slide the charger off the battery to remove.



Charging light indicators

ERROR 
Charge/battery fault.

CHARGING DELAY 
Battery pack is too hot or too cold.

Getting started

Assembly

THIS MACHINE IS ONLY TO BE USED WITH VAX ONEPWR BATTERIES AND CHARGER. PLEASE READ THE SAFETY GUIDE BEFORE USE.

IMPORTANT: Test the machine over a small hidden area of your flooring before use. If no damage occurs, continue cleaning. Not suitable for water sensitive flooring.

When using the machine, basic safety precautions should always be observed. Take care not to oversaturate flooring. Always finish on a dry stroke (no trigger pressed). For heavily soiled areas, it may be necessary to repeat the cleaning process.

Only use VAX hard floor solutions. Using other solutions may cause excess foaming and will invalidate your guarantee.

The water/solution tank should only be filled with warm water (max 40°C). Filling the water/solution tank with hot/boiling water will damage your washer and invalidate the guarantee.

Empty and rinse out the dirty water tank and leave to air dry before storage. Do not leave water/solution in the tanks for a prolonged period. A small amount of water/solution can be left in the tank for short periods of time in between cleans if the machine is used regularly.

For prolonged storage the brushrolls and filters should be removed, cleaned, dried and stored in the rinse/storage tray. Stand the machine in the storage tray when not in use.



Push the handle into the main body until it clicks into place.



Pull to open the battery cover.



Holding the cover open, slide the battery into the machine until it clicks into place.



Close the battery cover.



To remove the battery press both the buttons to release.

Filling the water/solution tank



Lift to remove the water/solution tank from the back of the machine.



Unscrew the cap and fill with water (max 40°C) and solution to the quick or deep cleaning markers on the tank.



Replace the cap tightly and push the tank down firmly on to the machine.



Quick Clean

Dilution for your every day clean.



Deep Clean

Dilution for heavy duty cleaning and where additional sanitisation is required.

Getting started

Operation

IMPORTANT: When the dirty water tank is full, the tank full light will illuminate and flash. Once the light is activated the machine will run for 5 seconds before switching off. Remove the dirty water tank and empty.



Place your foot on the base and pull the handle backwards to recline.



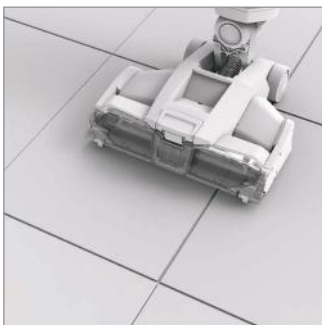
Press the on/off button to switch the machine on.



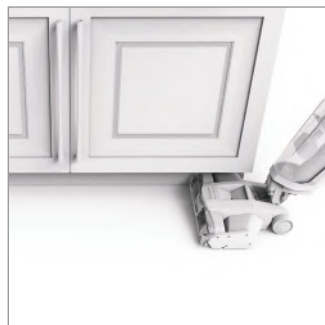
Press the trigger on the handle to release water and solution. The headlight on the floorhead will change to blue. Release the trigger to recover the water and solution.



For best results apply water/solution on the forward stroke and release the trigger on the backward stroke to pick up water/ solution. For a dryer finish, follow with an additional dry stroke with no trigger pressed.



For optimum pick up on deep grout lines, position the brushrolls over the grout and follow the line.



For optimum edge cleaning run the machine parallel to the edge.

Operation

NOTE: During use, when the machine is left ON whilst locked in the upright position, the machine will go into dry roller mode. After 5 seconds the machine will automatically switch off. Press the ON/OFF button to switch back on.



1. Battery Level Indicators

The battery level indicator lights will illuminate indicating how much charge is remaining during use. When less than 20% charge is remaining the bottom light will flash red indicating the battery is running low and charging is required.

2. Dirty Tank Full Indicator

Illuminates and flashes when the dirty water tank is full and needs emptying.

3. Dry Roller

Dry roller mode will activate when the machine is stood in the upright position. This will remove any residual water left on the brushrolls, in the floorhead or hose. The dry roller light will illuminate and flash when active.

4. Self Clean

Once activated, the self clean mode automatically runs through a cleaning cycle to remove any remaining dirt and debris from brushrolls, in the floorhead or hose.



When the dirty water tank is full, the light will illuminate and flash. You will hear a change in sound. Once the float and light are activated the machine will run for 5 seconds before switching off.



At the end of the clean, leave the machine switched ON in the upright position.



The machine will automatically go into DRY ROLLER mode and the DRY ROLLER light will flash for 5 seconds before switching the machine off.

Cleaning and maintenance

ALWAYS SWITCH OFF THE MACHINE AND REMOVE THE BATTERY BEFORE CARRYING OUT ANY MAINTENANCE OR TROUBLESHOOTING.

Emptying the dirty water tank

IMPORTANT: When the dirty water tank is full, the tank full light will illuminate and flash.

Once the light is activated the machine will run for 5 seconds before switching off.

After use and before storing, empty and rinse out the tanks, and leave to air dry before refitting.



Press down the dirty water tank release button and pull the tank to remove.



Hold the top of the dirty water tank lid and pull upwards to remove.



Twist the separator clockwise to release from the lid.



Empty the tank into a sink or toilet. Rinse the tank and separator under water (max 40°C) to remove dirt/debris.



To refit, line up the separator tab with the lid tab and twist anticlockwise to lock.



To re-fit, tilt the dirty water tank and line the front of the tank up onto machine. Push back until it clicks into place.

Cleaning the filter

IMPORTANT: Every 5-6 uses wash the filter with warm water (40°C max) and leave for 24 hours or until fully dry before refitting onto the machine. For prolonged storage the filter should be removed, cleaned and stored in the rinse/storage tray. For best cleaning results filters should be replaced every 6 months (depending on the level of use). Ensure all filters are dry and in place before using the machine.



Pull the tab on the bottom of the filter to remove.



Wash the filter under running water (40°C max).
Leave for at least 24hrs or until fully dry before refitting.

Cleaning the separator



Hold the top of the dirty water tank lid and pull upwards to remove.



Twist the separator clockwise to release from the lid.



Wash the separator mesh under running water (40°C max) to remove any dirt and debris.



To refit, line up the separator tab with the lid tab and twist anticlockwise to lock.

Cleaning and maintenance

Machine rinse and brushroll quick clean (recommended after every use)



Empty the tank into a sink or toilet.



Unscrew the cap and fill to the small area clean marker with warm water (max 40°C).



Replace the cap tightly and push the tank down on to the machine.



Place the machine upright in the rinse/storage tray.



Press the on/off button to switch the machine on. Do not recline the machine.



Press the SELF CLEAN button within 5 seconds of pressing the ON/OFF button to activate. The self clean button will flash.



The brushrolls will spin and water will automatically be released. The self clean cycle takes 25 seconds and will automatically change to DRY ROLLER mode before finishing and switching off. To stop the self clean mid cycle press the SELF CLEAN or ON/OFF button.



Empty the dirty water tank and any remaining water left in the water/solution tank into a sink or toilet.

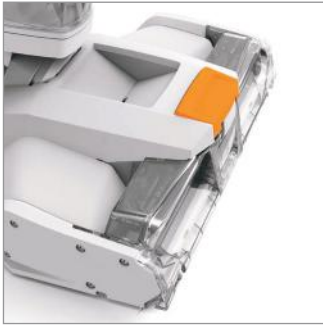


Rinse the tank and separator under water (max 40°C) to remove dirt/debris.

Removing and advanced cleaning of the brushrolls

IMPORTANT: Make sure both the brushrolls and brushroll cover are fitted correctly. If fitted incorrectly this may cause poor water pick up. For best cleaning results, advanced cleaning of the brushrolls should be done every 5-6 uses. For prolonged storage, the brushrolls should be removed, cleaned and stored in the rinse/storage tray.

CAUTION: If the brushrolls have been obstructed, the brushroll motor protection sensor may activate. The brushrolls will stop, the on/off button will flash for 5 seconds and the machine will cut off. To reset, remove the brushrolls and clear any obstruction. Wait 1 minute before refitting the brushrolls, switch the machine on and recline.



Press the brushroll cover button.



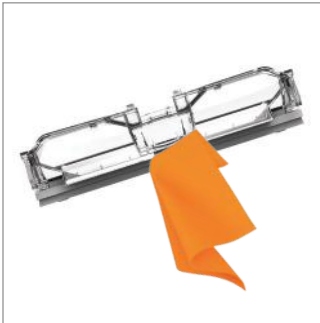
Rotate and lift the brushroll cover up to remove.



Lift and pull the tab on the outer side of each brushroll and pull to remove.



Rinse the brushrolls and brushroll cover in water (40°C max). Allow brushrolls to dry in tray storage before refitting.



Wipe the cover, squeegee and side wipers to remove any dried on dirt and debris.

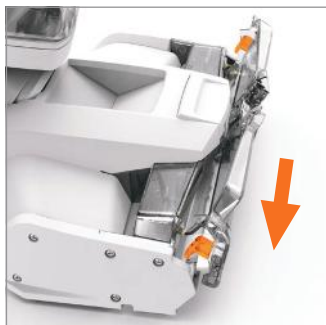
Cleaning and maintenance



Clean the brushroll housing of any dirt and debris.



To refit the brushrolls slide the end of the brushroll without the tab on to the spindle and then push the outer side in until it clicks.



Slide the brushroll cover tabs behind the tabs on the base. Rotate and push closed until it clicks.



Between uses the brushrolls can be dried and stored in the rinse/storage tray.

Checking for blockages and advanced cleaning



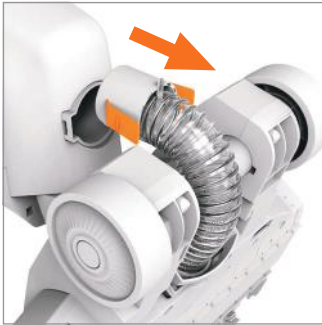
Lift to remove the water/solution tank from the back of the machine.



Press down the dirty water tank release button and pull the tank to remove.



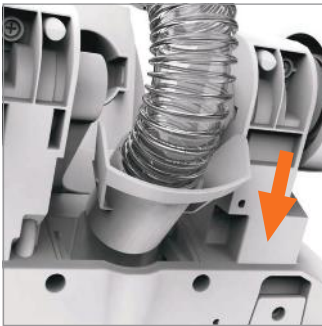
Squeeze the inlet tube release clips and pull to remove.



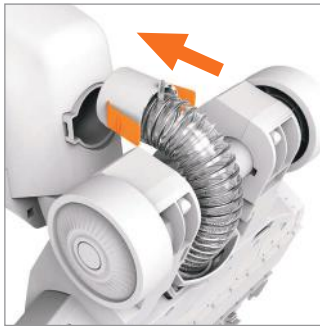
Lie the machine on its front. Squeeze and pull to release the hose from the top and floorhead of the machine.



Rinse the hose and inlet tube in water (40°C max) to remove any dirt and debris.



With the machine on its front, clip the bottom part of the hose into the floorhead and the top of the hose into the machine until it clicks into place.



To refit the tube line up the base of the tube to the machine and push back until it clicks into place.

Cleaning and maintenance

Removing and cleaning the squeegee assembly



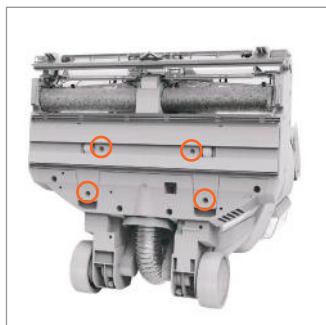
Lift to remove the water/solution tank from the back of the machine.



Press down the dirty water tank release button and pull the tank to remove.



Lie the machine on its back.



Using a crosshead screwdriver, remove the 4 screws.



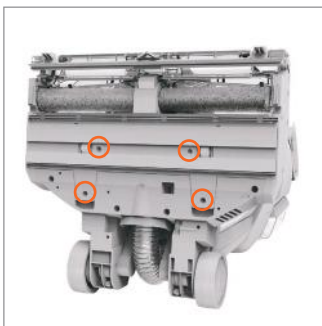
Lift the screw tabs and pull the assembly to remove.



Rinse the assembly under water (40°C max). Wipe the felt strip and squeegee to remove any dried on dirt and debris.



To refit the squeegee assembly, fit the top tabs on the assembly into the machine and push the screw tabs into place.



Refit and tighten the 4 screws.

WARNING: Always switch off the machine and remove the battery before performing any checks or maintenance.

There is an accessory missing

- Check the contents on the box to make sure the part is definitely included with your machine.

Why does the machine have no power?

- The battery is not fitted correctly. **See Assembly page 6.**
- The battery has no charge. **See Charging the battery page 5.**
- The motor thermostat may have tripped. Empty the dirt water tank and check for blockages. Clean the filters and allow the machine to rest for approximately 1 hour. If you have washed the filters, wait 24 hours to fully dry before placing back on the machine. **See Emptying the dirty water tank page 10 and Cleaning the filter and separator page 11.**
- The brushroll motor sensor may have been activated. To reset, remove the brushrolls and clear any obstruction. Wait 1 minute before refitting the brushrolls. Switch the machine on and recline. **See Removing and advanced cleaning of the brushrolls page 13.**
- The dirty water tank is full. **See Emptying the dirty water tank page 10.**
- If the machine is left ON whilst locked in the upright position, the machine will go into dry roller mode. After 5 seconds the machine will automatically switch off. Press the ON/OFF button to switch back on. **See Operation page 9.**

Why won't the machine pick up?

- The float in the dirty water tank may have been activated. Empty the dirty water tank and wait for the float to settle before re-starting the machine. **See Emptying the dirty water tank page 10.**
- The brushroll cover may not be correctly fitted. **See Removing and advanced cleaning of the brushrolls page 13.**
- The dirty water tank may not be assembled correctly or the lid may not pushed down securely. **See Emptying the dirty water tank page 10.**
- Check the filter located on the dirty water tank lid for dirt and debris. Filter should be washed after every 5-6 uses, dried before refitting and replaced every 6 months. **See Cleaning the filter page 11.**
- Filter is wet. Allow to dry before refitting. **See Cleaning the filter page 11.**
- Check for blockages and clear. **See Checking for blockages and advanced cleaning page 15 and Removing and advanced cleaning of the brushrolls page 13.**
- Check separator for dirt and debris. Clean and retry. **See Cleaning the separator page 11.**
- Check the squeegee assembly and brushroll cover for dirt and debris. **See Removing and Cleaning the squeegee assembly page 17 and See Removing and advanced cleaning of the brushrolls page 13.**
- The inlet tube is not correctly fitted. **See Checking for blockages and advanced cleaning page 15.**

Why won't the solution/clean water dispense?

- Squeeze the trigger on the handle to release solution and water mix.
- The water/solution tank is empty. Refill the tank. **See Filling the water/solution tank page 7.**
- Make sure the solution/water tank is fitted securely. **See Filling the water/solution tank page 7.**
- The solution/water tank valve may be stuck, hold the water/solution tank over the sink and press the valve on the cap to release.

Why won't the brushrolls turn?

- The machine is not reclined. Place your foot on the base and pull the handle backwards to recline. **See Operation page 8.**
- The brushrolls may not be correctly fitted. **See Removing and advanced cleaning of the brushrolls page 13.**
- The brushrolls may be obstructed. **See Removing and advanced cleaning of the brushrolls page 13.**

Why is the floorhead light flashing?

- The brushroll motor sensor may have been activated. To reset remove the brushrolls and clear any obstruction. Wait 1 minute before refitting the brushrolls. Switch the machine on and recline. **See Removing and advanced cleaning of the brushrolls page 13.**

For how-to videos and
warranty registration visit
www.vax.co.uk

info@vax.co.uk **vax.co.uk**

Vax Ltd, Artillery House, Heritage Way, Droitwich, WR9 8YB, UK.