



JLAB AUDIO  
PLAY GAMING HEADPHONES

We love that you are rocking JLab Audio!  
We take pride in our products and fully stand behind them.



### YOUR WARRANTY

All warranty claims are subject to JLab Audio authorization and at our sole discretion. Retain your proof of purchase to ensure warranty coverage.



### CONTACT US

Reach out to us at [support@jlabaudio.com](mailto:support@jlabaudio.com) or visit [jlabaudio.com/contact](http://jlabaudio.com/contact)

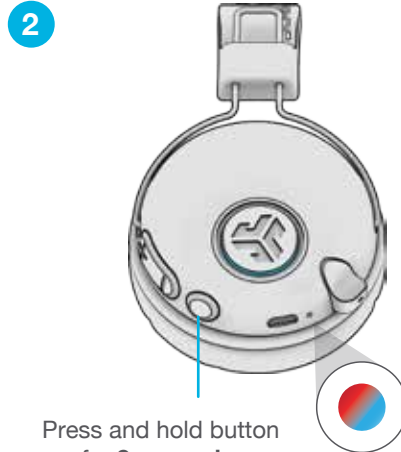
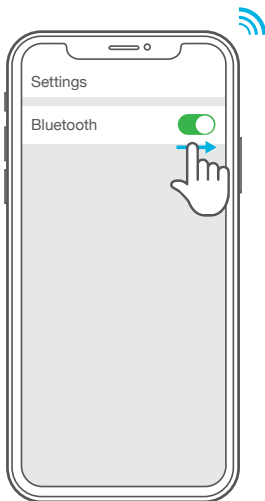
## REGISTER TODAY

[jlabaudio.com/register](http://jlabaudio.com/register)

Product updates | How-to tips  
FAQs & more

## BLUETOOTH PAIRING

- 1 Turn on the Bluetooth in your device settings.



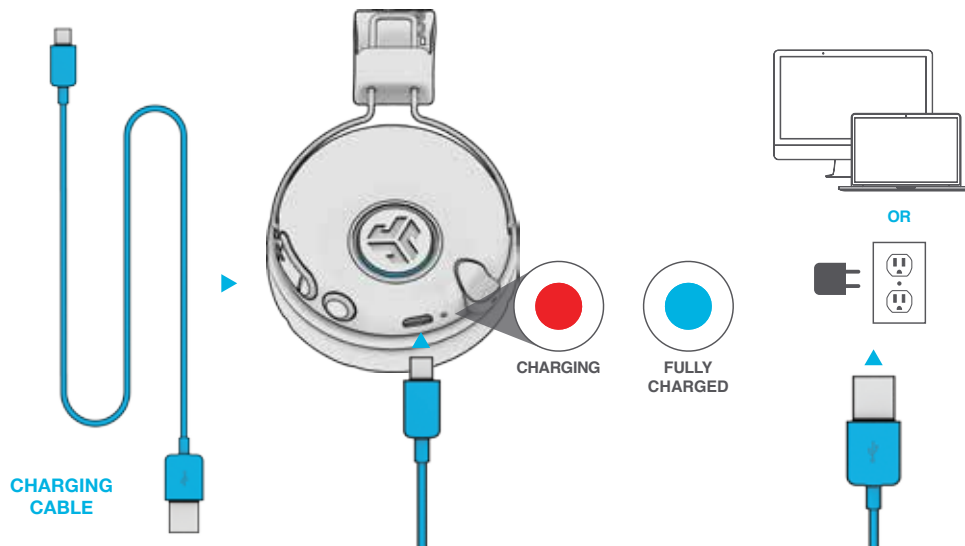
Press and hold button for **8 seconds**.  
Release.  
Light will **flash red and blue** to indicate pairing mode.

- 3 Select "JLab Play" in your device settings to connect.



## CHARGING

Connect to computer or USB 5V (or less) output device.



## BUTTON FUNCTIONS

### VOLUME UP:

Press once

### TRACK FORWARD:

Press and hold 2+ seconds

### VOLUME DOWN:

Press once

### TRACK BACKWARD:

Press and hold 2+ seconds

### POWER ON / OFF:

Press and hold 2+ seconds

### PLAY / PAUSE / ANSWER / HANG UP CALLS:

Press once

### REJECT INCOMING CALL:

Press and hold 1+ second

### ACTIVATE SIRI (iOS) OR "OK GOOGLE" (ANDROID):

Press twice

### BLUETOOTH PAIRING:

See Bluetooth Pairing page



### SWITCH GAMING / MUSIC EQ:

Press and hold 1+ second both buttons simultaneously

**GAMING:** 1 Beep

**MUSIC:** 2 Beeps



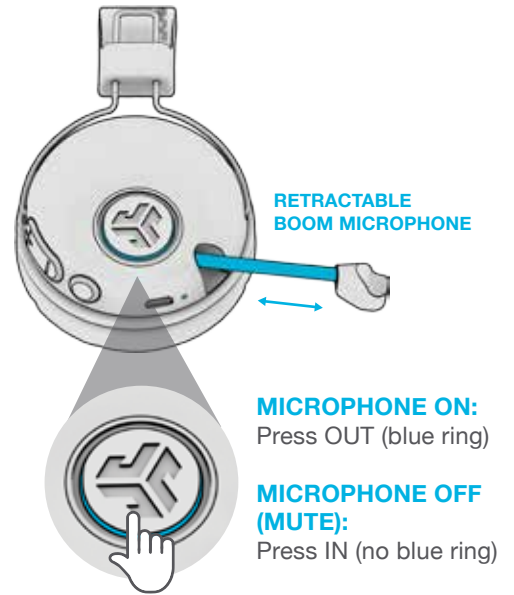
### GAMING (One Beep)

Increased mid-high frequency response for clear vocals and spacial awareness



### MUSIC (Two Beeps)

Amplified vocals and bass for enhanced music listening



RETRACTABLE  
BOOM MICROPHONE

**MICROPHONE ON:**  
Press OUT (blue ring)

**MICROPHONE OFF  
(MUTE):**  
Press IN (no blue ring)

## VOICE PROMPTS

“HELLO” = Power is ON.

“READY TO PAIR” = JLab Play headphones are ready to connect to your Bluetooth device.

“YOU'RE CONNECTED” =

JLab Play headphones are connected to your Bluetooth device and ready for use.

“GOODBYE” = Power turning OFF.

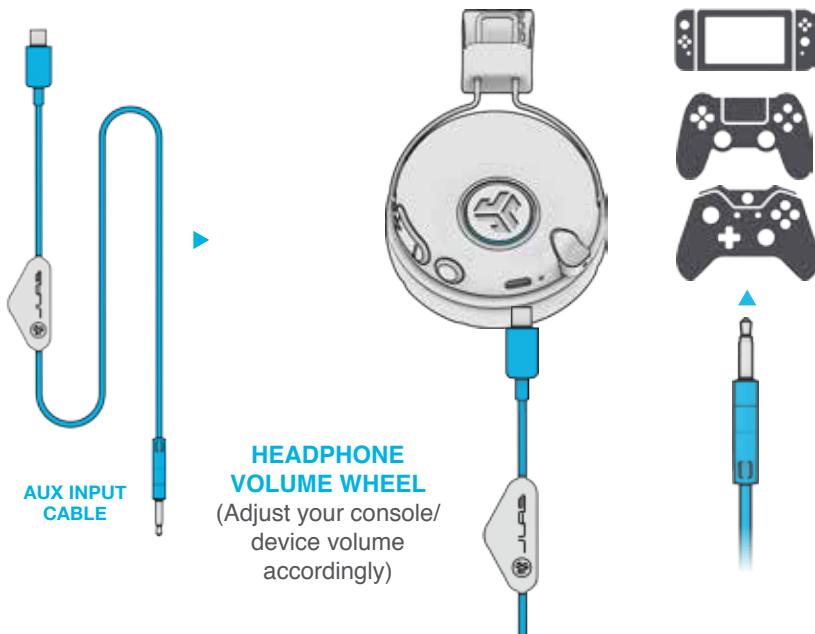
## NOTES:

- When using the AUX INPUT, the microphone and game volume will also be determined by your console settings. Adjust accordingly.
- The boom microphone and mute function works in both Bluetooth and AUX INPUT modes.
- The button functions on the headphone ear cup will only work in Bluetooth mode.

## CONSOLE + MOBILE GAMING

Plug in the Micro USB into the Micro USB input.

Plug in the AUX input your controller or device.



## PC / MAC SETUP IF CONNECTED TO BLUETOOTH

### SETUP with PC (Windows 7, 8, or 10):

1. From the Start Menu, select the Control Panel.
2. Select Hardware and Sound category.
3. Select the Sound category.
4. The Playback tab should show JLab Play Gaming Headphones connected as the Default Device.
5. Click the next tab that says Recording.
6. Right click the JLab Play Gaming Headphones icon and select “Set as Default Device”.
7. Click OK box to save changes.

### SETUP with MAC (macOS 10.1 and higher):

1. Open System Preferences and select the Sound icon.
2. Select the Input tab and select “JLab Play”.
3. Select Output tab and select “JLab Play”.
4. From this screen, set the Output volume to desired level.
5. Closing out of the window will save settings.

## CAUTIONS

- Avoid getting moisture or liquids on the headphone cups.
  - Avoid extreme heat, cold, and humidity.
  - Avoid dropping or crushing headphones, stressing the cable by rapid pulling or extreme force, or bending the cable at a sharp angle.
  - Wax may build up in headphone cups, lowering the sound quality. Carefully remove the wax with a cotton swab or other small tool to improve the sound quality.
  - If you experience discomfort or pain, try lowering the volume or discontinuing use temporarily.
  - If you experience regular discomfort while using this product, discontinue use and consult your physician.
  - We recommend you treat your headphones as you would a nice pair of sunglasses and keep them in safe location when not in use.
- 



[Shop products](#) | [Product alerts](#) | [Burn-in your headphones](#)

JLab Audio + Burn-in Tool

