

**PHILIPS**

**Soundbar**

6000 series

TAB6405

# User manual



Register your product and get support at  
[www.philips.com/support](http://www.philips.com/support)



# Contents

---

<b>1 Important</b>	2	<b>4 Use your Soundbar</b>	12
Help and support	2	Turn ON and OFF	12
Safety	2	Select Modes	12
Care for your product	3	Select Equalizer (EQ) Effect	12
Care of the environment	3	Adjust the Volume	13
Caution FCC and IC statement for		Bluetooth Operation	13
Users (USA and Canada only)	4	AUX / OPTICAL / HDMI ARC Operation	14
Compliance	4	USB Operation	14
What's in the Box	5		
<hr/>		<hr/>	
<b>2 Your Soundbar</b>	6	<b>5 Wall mount</b>	15
Main unit	6	<hr/>	
Connectors	6	<b>6 Product specifications</b>	16
Wireless subwoofer	7	<hr/>	
Remote control	7	<b>7 Troubleshooting</b>	17
Prepare the Remote Control	8		
Placement	8		
<hr/>			
<b>3 Connect</b>	9		
Connect to HDMI ARC Socket	9		
Connect to Optical Socket	9		
Connect to AUX Socket	9		
Connect the IR pass-through cable	10		
Connect to Power	10		
Pair up with the subwoofer	11		

# 1 Important

Read and understand all instructions before you use your product. If damage is caused by failure to follow instructions, the warranty does not apply.

---

## Help and support

For extensive online support, visit [www.philips.com/support](http://www.philips.com/support) to:

- download the user manual and the quick start guide
- watch video tutorials (available only for selected models)
- find answers to frequently answered questions (FAQs)
- email us a question
- chat with our support representative.

Follow the instructions on the website to select your language, and then enter your product model number.

Alternatively, you can contact Consumer Care in your country. Before you contact, note down the model number and serial number of your product. You can find this information on the back or bottom of your product.

---

## Safety

### Risk of electric shock or fire!

- Before you make or change any connections, make sure that all devices are disconnected from the power outlet.
- Never expose the product and accessories to rain or water. Never place liquid containers, such as vases, near the product. If liquids are spilt on or into the product, disconnect it from the power outlet immediately. Contact Consumer Care to have the product checked before use.

- Never place the product and accessories near naked flames or other heat sources, including direct sunlight.
- Never insert objects into the ventilation slots or other openings on the product.
- Where the mains plug or an appliance coupler is used as the disconnect device, the disconnect device shall remain readily operable.
- Battery (battery pack or batteries installed) shall not be exposed to excessive heat such as sunshine, fire or the like.
- Disconnect the product from the power outlet before lightning storms.
- When you disconnect the power cord, always pull the plug, never the cable.

### Risk of short circuit or fire!

- For identification and supply ratings, see the type plate at the back or bottom of the product.
- Before you connect the product to the power outlet, ensure that the power voltage matches the value printed on the back or bottom of the product. Never connect the product to the power outlet if the voltage is different.

### Risk of injury or damage to this product!

- For wall mounting, this product must be securely attached to the wall in accordance with the installation instructions. Use only the supplied wall mount bracket (if available). Improper wall mounting may result in accident, injury or damage. If you have any query, contact Consumer Care in your country.
- Never place the product or any objects on power cords or on other electrical equipment.
- If the product is transported in temperatures below 5°C, unpack the product and wait until its temperature matches room temperature before connecting it to the power outlet.
- Parts of this product can be made of glass. Handle with care to avoid injury and damage.

**Risk of overheating!**

- Never install this product in a confined space. Always leave a space of at least four inches around the product for ventilation. Ensure curtains or other objects never cover the ventilation slots on the product.

**Risk of contamination!**

- Do not mix batteries (old and new or carbon and alkaline, etc.).
- CAUTION: Danger of explosion if batteries are incorrectly replaced. Replace only with the same or equivalent type.
- Remove batteries if they are exhausted or if the remote control is not to be used for a long time.
- Batteries contain chemical substances, they should be disposed of properly.

**Risk of swallowing batteries!**

- The product/remote control may contain a coin/button type battery, which can be swallowed. Keep the battery out of reach of children at all times! If swallowed, the battery can cause serious injury or death. Severe internal burns can occur within two hours of ingestion.
- If you suspect that a battery has been swallowed or placed inside any part of the body, seek immediate medical attention.
- When you change the batteries, always keep all new and used batteries out of reach of children. Ensure that the battery compartment is completely secure after you replace the battery.
- If the battery compartment cannot be completely secured, discontinue use of the product. Keep out of reach of children and contact the manufacturer.



This is CLASS II apparatus with double insulation, and no protective earth provided.

**Care for your product**

Use only microfiber cloth to clean the product.

**Care of the environment****Disposal of your old product and battery**

Your product is designed and manufactured with high quality materials and components, which can be recycled and reused.



This symbol on a product means that the product is covered by European Directive 2012/19/EU.



This symbol means that the product contains batteries covered by European Directive 2013/56/EU which cannot be disposed of with normal household waste. Inform yourself about the local separate collection system for electrical and electronic products and batteries. Follow local rules and never dispose of the product and batteries with normal household waste. Correct disposal of old products and batteries helps prevent negative consequences for the environment and human health.

**Removing the disposable batteries**

To remove the disposable batteries, see battery installation section.

---

## Caution FCC and IC statement for Users (USA and Canada only)



---

### FCC INFORMATION

#### Warning:

- This equipment should be installed and operated with minimum distance 20cm between the radiator & your body.
- Changes or modifications to this unit not expressly approved by the party responsible for compliance could void the user's authority to operate the equipment.

**NOTE:** This equipment has been tested and found to comply with the limits for a Class B digital device, pursuant to Part 15 of the FCC Rules. These limits are designed to provide reasonable protection against harmful interference in a residential installation. This equipment generates, uses and can radiate radio frequency energy and, if not installed and used in accordance with the instructions, may cause harmful interference to radio communications.

However, there is no guarantee that interference will not occur in a particular installation. If this equipment does cause harmful interference to radio or television reception, which can be determined by turning the equipment off and on, the user is encouraged to try to correct the interference by one or more of the following measures:

- Reorient or relocate the receiving antenna.
- Increase the separation between the equipment and receiver.
- Connect the equipment into an outlet on a circuit different from that to which the receiver is connected.
- Consult the dealer or an experienced radio / TV technician for help.

This device contains licence-exempt transmitter(s)/receiver(s) that comply with Innovation, Science and Economic Development Canada's licence-exempt RSS(s). Operation is subject to the following two conditions:

1. This device may not cause interference.
2. This device must accept any interference, including interference that may cause undesired operation of the device.

---

## Compliance

This product complies with the radio interference requirements of the European Community.

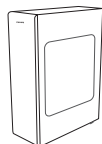
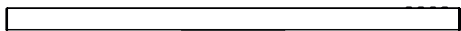
Hereby, TP Vision Europe B.V. declares that this product is in compliance with the essential requirements and other relevant provisions of Directive 2014/53/EU.

You can find the Declaration of Conformity on [www.p4c.philips.com](http://www.p4c.philips.com).

## What's in the Box

Check and identify the items in the package:

- Soundbar x 1
- Wireless Subwoofer x 1
- Remote Control x 1
- Power Cord (for Subwoofer) \* x 2
- DC Adapter (for Soundbar) \* x 2
- IR pass-through Cable x 1
- IR Bracket x 1
- Wall Mount kit x 1  
(Wall Brackets x2, Screws x2, Dowels x2)
- Quick Start Guide / Warranty Card /  
Safety Sheet x 1



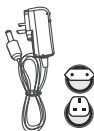
Wireless Subwoofer



Remote Control



Power Cord \*  
(for subwoofer)



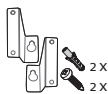
DC adapter \*



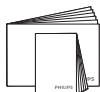
IR pass-through  
Cable



IR Bracket



Wall Bracket  
Gum Cover  
Screws (for wall)



Quick start guide  
Warranty Card  
Safety Sheet

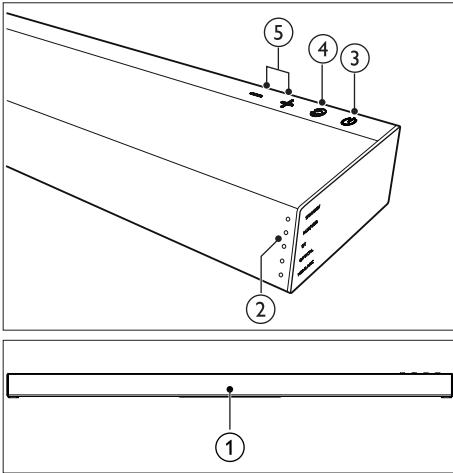
\* Power cord quantity and plug type vary by regions.

# 2 Your Soundbar

Congratulations on your purchase, and welcome to Philips! To fully benefit from the support that Philips offers, register your Soundbar at [www.philips.com/support](http://www.philips.com/support).

## Main unit

This section includes an overview of the main unit.



- ① Remote Control Sensor
- ② Soundbar's LED indicator

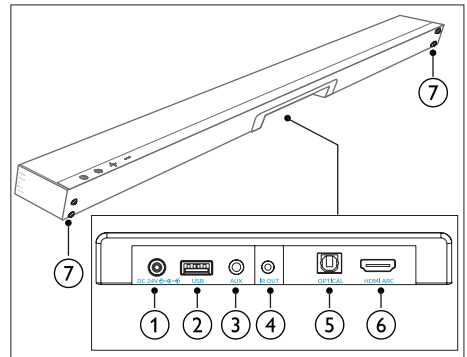
Switch the playback source and the front indicator lights up accordingly. You may refer to the text on the right for the corresponding source.

Status	LED State
Standby	[Standby] Solid red
AUX	[AUX/USB] Solid white
USB	[AUX/USB] Blinking white
BT (Bluetooth)	
• Connected	[BT] Solid white
• Connection	[BT] Blinking white
OPTICAL	[OPTICAL] Solid white
HDMI ARC	[HDMI ARC] Solid white

- ③ ⏻ (Standby-On)  
Switch the Soundbar On or to Standby.
- ④ ⏮ (Source)  
Select an input source for the Soundbar.
- ⑤ +/- (Volume)  
Increase or decrease volume.

## Connectors

This section includes an overview of the connectors available on your Soundbar.

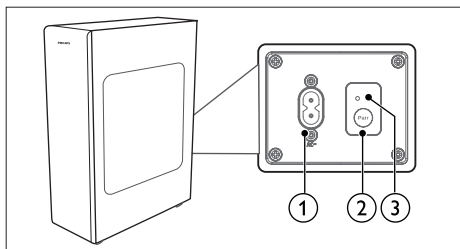


- ① DC 24V  
Connect to adapter.
- ② USB
  - Audio input from a USB storage device.
  - Upgrade software of this product.
- ③ AUX  
Audio input from, for example, an MP3 player (3.5mm jack).
- ④ IR OUT  
IR pass-through cable connector.
- ⑤ OPTICAL  
Connect to an optical audio output on the TV or a digital device.
- ⑥ HDMI ARC  
Connect to the HDMI input on the TV.
- ⑦ Wall Bracket Screws



## Wireless subwoofer

This section includes an overview of the Wireless subwoofer.



- ① **AC~ Socket**  
Connect to the power supply.
- ② **Pair button**  
Press and hold to enter the pairing mode for the subwoofer.
- ③ **Subwoofer indicator**  
Determine the status based on the wireless subwoofer indicator.

LED State	Status
Fast blink	Subwoofer in pairing mode
Constant on	Connected / Pairing successful
Slow blink	Connection / Pairing Failed

## Remote control

This section includes an overview of the remote control.

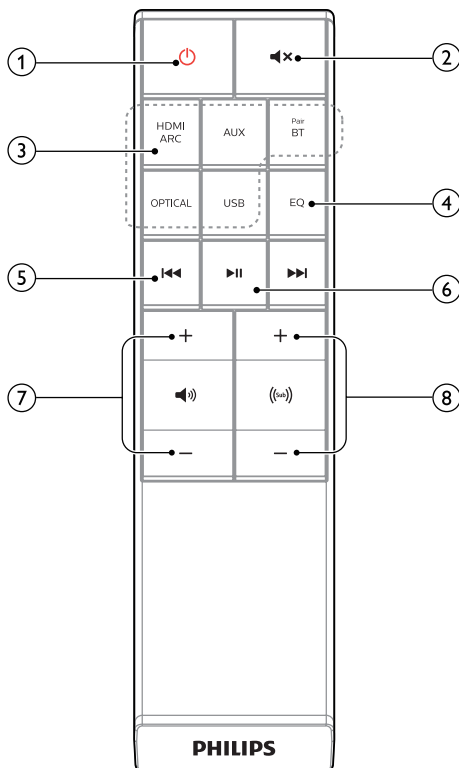
- ① **⏻ (Standby-On)**  
Switch the Soundbar on or to standby.
- ② **🔇 (Mute)**  
Mute or restore volume.
- ③ **Source buttons**  
**Aux:** Switch your audio source to the AUX connection (3.5mm jack).  
**BT / Pair:** Switch to Bluetooth mode. Press and hold to activate the pairing function in Bluetooth mode or disconnect the existing paired Bluetooth device.

**Optical:** Switch your audio source to the optical connection.

**HDMI ARC:** Switch your source to HDMI ARC connection.

**USB:** Switch to USB mode.

- ④ **EQ**  
Select Equalizer (EQ) effect.
- ⑤ **⏮ / ⏭ (Previous/Next)**  
Skip to the previous or next track in USB/BT mode.
- ⑥ **▶ || (Play/Pause)**  
Start, pause or resume play in USB/BT mode.
- ⑦ **🔊 +/- (Soundbar's Volume)**  
Increase / decrease the soundbar's volume.
- ⑧ **🔊 (sub) +/- (Subwoofer's Volume)**  
Increase / decrease the subwoofer's volume.



---

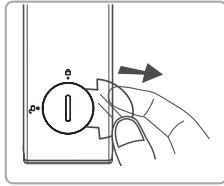
## Prepare the Remote Control

- The provided Remote Control allows the unit to be operated from a distance.
- Even if the Remote Control is operated within the effective range 19.7 feet (6m), remote control operation may be impossible if there are any obstacles between the unit and the remote control.
- If the Remote Control is operated near other products which generate infrared rays, or if other remote control devices using infra-red rays are used near the unit, it may operate incorrectly. Conversely, the other products may operate incorrectly.

---

### First-time use:



The unit has a pre-installed lithium CR2025 battery. Remove the protective tab to activate the remote control battery.

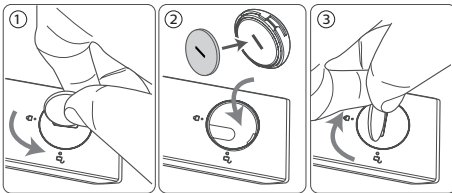


---

### Replace the Remote Control Battery

The remote control requires a CR2025, 3V Lithium battery.

- 1 Use tools (such as coin batteries/coins) to catch the groove of the battery box cover and turn counter-clockwise to  (unlock).
- 2 Remove the old battery, which is located in the lid, place the new CR2025 battery and pay attention to the correct polarity (+/-).
- 3 Use the tools to catch the groove of the battery compartment cover and turn clockwise to  (lock), secure it into the remote control.



---

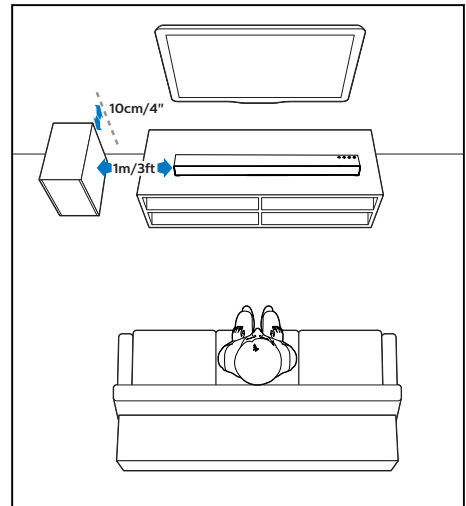
## Precautions Concerning Batteries

- When the Remote Control is not to be used for a long time (more than a month), remove the battery from the Remote Control to prevent it from leaking.
- If the batteries leak, wipe away the leakage inside the battery compartment and replace the batteries with new ones.
- Do not use any batteries other than those specified.
- Do not heat or disassemble batteries.
- Never throw them in fire or water.
- Do not carry or store batteries with other metallic objects. Doing so could cause batteries to short circuit, leak or explode.
- Never recharge a battery unless it is confirmed to be a rechargeable type.

---

## Placement

Place the subwoofer at least 1 meter (3 feet) away from your Soundbar, and ten centimeters away from the wall. For best results, place your subwoofer as shown below.



# 3 Connect

This section helps you connect your Soundbar to a TV and other devices, and then set it up.

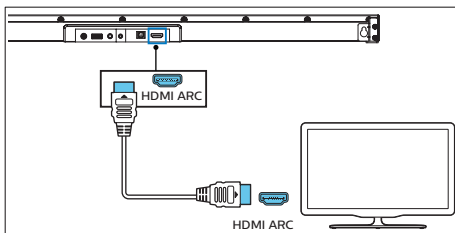
For information about the basic connections of your Soundbar and accessories, see the quick start guide.

## Note

- For identification and supply ratings, see the type plate at the back or bottom of the product.
- Before you make or change any connections, make sure that all devices are disconnected from the power outlet.

## Connect to HDMI ARC Socket

Your Soundbar supports HDMI with Audio Return Channel (ARC). If your TV is HDMI ARC compliant, you can hear the TV audio through your Soundbar by using a single HDMI cable.

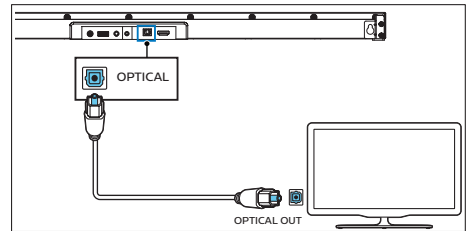


- 1 Using a HDMI cable, connect the **HDMI ARC** connector on your Soundbar to the **HDMI ARC** connector on the TV.
  - The **HDMI ARC** connector on the TV might be labeled differently. For details, see the TV user manual.
- 2 On your TV, turn on HDMI-CEC operations. For details, see the TV user manual.

## Note

- Your TV must support the HDMI-CEC and ARC function. HDMI-CEC and ARC must be set to On.
- The setting method of HDMI-CEC and ARC may differ depending on the TV. For details about ARC function, please refer to your TV owner's manual.
- Only HDMI 1.4 compatible cables can support the ARC function.

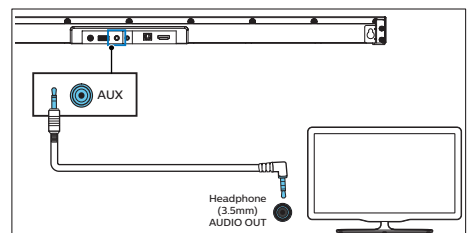
## Connect to Optical Socket

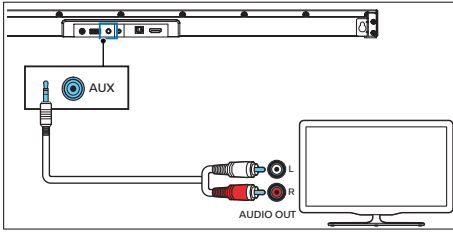


- 1 Using an optical cable, connect the **OPTICAL** connector on your Soundbar to the **OPTICAL OUT** connector on the TV or other device.
  - The digital optical connector might be labeled **SPDIF** or **SPDIF OUT**.

## Connect to AUX Socket

- Use a 3.5mm to 3.5mm audio cable to connect the TV's headphone socket to the AUX socket on the unit.

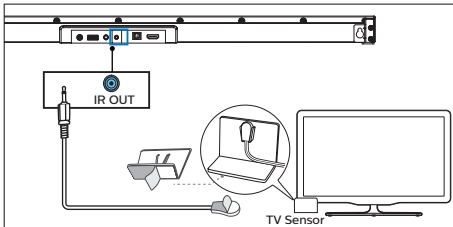




- Use a RCA to 3.5mm audio cable to connect the TV's audio output sockets to the AUX socket on the unit.

## Connect the IR pass-through cable

If the Soundbar blocks the IR receiver of the TV when placing directly in front of it, you can connect the Soundbar and TV with the supplied IR pass-through cable so that it can receive signal from the remote control of your TV.



- 1 Connect the 2.5mm end of the IR pass-through cable to the IR OUT connector on your Soundbar.
- 2 Then, place the other end with the IR blaster close to the TV sensor. For information, check the user manual of your TV.



### Note

- Before you start using IR pass-through, make sure the TV's remote sensing area is completely blocked.
- If you find that the TV's remote control receiver is not blocked and still works, you can cancel the connection of the IR pass-through cable.

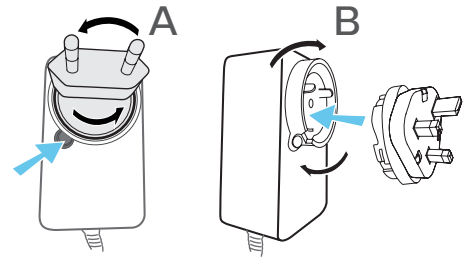
## Connect to Power

- Before connecting the AC power cord, ensure you have completed all other connections.
- **Risk of product damage!** Ensure that the power supply voltage corresponds to the voltage printed on the back or the underside of the unit.

## Conversion plug

Choose the adapter for your region.

If needed, snap on the adapter for your region.



## Soundbar

- 1 Unwind the mains adapter and mains cable to their full length. Connect the mains adapter to the DC IN 24V socket of the soundbar.
- 2 Then connect the mains adapter into a mains socket.

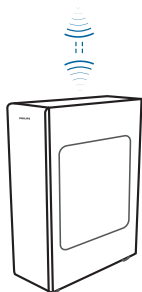
## Subwoofer

- 3 Connect the mains cable to the AC~ socket of the Subwoofer and then into a mains socket.
- Power cord quantity and plug type vary by regions.

## Pair up with the subwoofer

### Automatic Pairing

Plug the Soundbar and the subwoofer into the mains sockets and then press on the unit or remote control to switch the unit to **ON** mode. The subwoofer and Soundbar will automatically pair.



↳ Determine the status based on the wireless subwoofer indicator.

LED State	Status
Fast blink	Subwoofer in pairing mode
Constant on	Connected / Pairing successful
Slow blink	Connection / Pairing Failed

### Tips

- Do not press Pair on the rear of the subwoofer, except for manual pairing.

### Manual Pairing

If no audio from the wireless subwoofer can be heard, manually pair up the subwoofer.

- Unplug both units from the mains sockets again, then plug them in again after 3 minutes.
- Press and hold the **Pair** button on the rear of the subwoofer for a few seconds.
  - The Pair indicator on the subwoofer will rapidly blink.
- Then press **⏻** on the unit or remote control to switch the unit ON.
  - The **Pair** indicator on the subwoofer will become solid when successful.
- If the Pair indicator still keeps blinking, repeat step 1-3.

### Tips

- The subwoofer should be within 6 m of the Soundbar in an open area (the closer the better).
- Remove any objects between the subwoofer and the Soundbar.
- If the wireless connection fails again, check if there is a conflict or strong interference (e. g. interference from an electronic device) around the location. Remove these conflicts or strong interferences and repeat the above procedures.
- If the main unit is not connected with the subwoofer and it is in ON mode, the unit's STANDBY indicator will flash.


# 4 Use your Soundbar

This section helps you use the Soundbar to play audio from connected devices.

### Before you start

- Make the necessary connections described in the user manual.
- Switch the Soundbar to the correct source for other devices.

## Turn ON and OFF

- When you first connect the unit to the main socket, the unit will be in STANDBY mode. The Standby indicator will light up.
- Press the  button on the remote control to switch the main unit ON or OFF.
- Disconnect the main plug from the main socket if you want to switch the unit off completely.

### Auto wake up

- If a TV or an external device (only for AUX socket) is connected, the unit will switch on automatically when the TV or the external device is switched on.

### Auto Standby

The unit automatically turns to Standby mode after about 15 minutes if the TV or the external unit is disconnected, switched off.

- To switch the unit off completely, remove the mains plug from the mains socket.
- Please turn the unit off completely to save energy when not in use.

## Select Modes

- 1 Press the  button repeatedly on the unit or press the **AUX, OPTICAL, HDMI ARC, BT/Pair, USB** buttons on the remote control to select the desired mode.

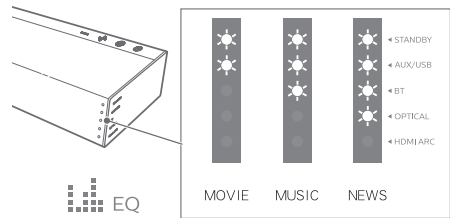
- ↳ The indicator light on the Soundbar will show which mode is currently in use.

Status	LED State
AUX	[AUX/USB] Solid white
USB	[AUX/USB] Blinking white
BT (Bluetooth)	[BT] Solid white
· Connected	[BT] Blinking white
· Connection	[BT] Blinking white
OPTICAL	[OPTICAL] Solid white
HDMI ARC	[HDMI ARC] Solid white

## Select Equalizer (EQ) Effect

Select predefined sound modes to suit your video or music.

- 1 Press the **EQ** button on the remote control to select your desired preset equalizer effects.
  - ↳ LEDs blink for 3 sec to show current EQ mode according to the EQ mode definition (Fig).



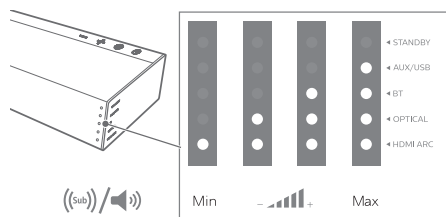
**Movie:** recommended for viewing Movies

**Music:** recommended for listening to Music

**News:** recommended for listening to News

## Adjust the Volume

When adjusting the volume of the soundbar and subwoofer, the status indicator will increase / decrease the amount of light. According to the corresponding light display / blinking (Fig), determine the current volume level of the soundbar and subwoofer.



### Adjust the Soundbar's Volume

- 1 Press **⏮** +/- (**Volume**) to increase or decrease the soundbar's volume level.
  - To mute sound, press **⏸** (**Mute**).
  - To restore the sound, press **⏸** (**Mute**) again or press **Vol+**/**Vol-** (**Volume**).

### Adjust the Subwoofer's Volume

- 1 Press **(sub)** +/- (**subwoofer**) to increase or decrease the subwoofer's volume level.

## Bluetooth Operation

Through Bluetooth, connect the Soundbar with your Bluetooth device (such as an iPad, iPhone, iPod touch, Android phone, or laptop), and then you can listen to the audio files stored on the device through your Soundbar speakers.

### What you need

- A Bluetooth device which supports Bluetooth profile A2DP, AVRCP and with Bluetooth version as 4.2 + EDR.

- The maximum operational range between the Soundbar and a Bluetooth device is approximately 10 meters (30 feet).


- 1 Press the **⊞** button repeatedly on the unit or press **BT/Pair** button on the remote control to switch the Soundbar to Bluetooth mode.
  - ↳ The BT indicator will blink.
- 2 On the Bluetooth device, switch on Bluetooth, search for and select **Philips TAB6405** to start connection (see the user manual of the Bluetooth device on how to enable Bluetooth).
  - ↳ During connection, the BT indicator will blink.
- 3 Wait until you hear voice prompt from the Soundbar.
  - ↳ If the successfully connected, the BT indicator will light up solidly.
- 4 Select and play audio files or music on your Bluetooth device.
  - During play, if a call is coming, music play is paused. Play resumes when the call ends.
  - If your Bluetooth device supports AVRCP profile, on the remote control you can press **⏮** / **⏭** to skip to a track, or press **⏸** to pause/resume play.
- 5 To exit Bluetooth, you can:
  - Switch the unit to another source.
  - Disable the function from your Bluetooth device. Or place your Bluetooth device out of the maximum operational range. The Bluetooth device will be disconnected from the unit after the voice prompt.
  - Press and hold the **BT/Pair** button on the remote control or the **⊞** button on the unit.

## Note

- The music streaming may be interrupted by obstacles between the device and Soundbar, such as wall, metallic casing that covers the device, or other devices nearby that operate in the same frequency.
- If you want to connect your Soundbar with another Bluetooth device, press and hold BT/Pair on the remote control to disconnect the currently connected Bluetooth device.

## AUX / OPTICAL / HDMI ARC Operation

Ensure that the unit is connected to the TV or audio device.

- 1 Press the  button repeatedly on the unit or press the **AUX**, **OPTICAL**, **HDMI ARC** buttons on the remote to select the desired mode.
  - ↳ The indicator light on the Soundbar will show which mode is currently in use.

Status	LED State
AUX	[AUX/USB] Solid white
OPTICAL	[OPTICAL] Solid white
HDMI ARC	[HDMI ARC] Solid white

- 2 Operate your audio device directly for playback features.
- 3 Press the +/- (Volume) buttons to adjust the volume to your desired level.

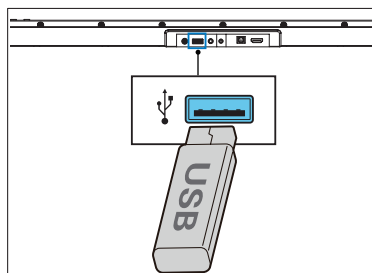
## Tip

- While in OPTICAL/HDMI ARC mode, if there's no sound output from the unit and the status Indicator flashes, you may need to activate **PCM** or **Dolby Digital** Signal output on your source device (e.g. TV, DVD or Blu-ray player).

## USB Operation



Enjoy audio on a USB storage device, such as an MP3 player and USB flash memory, etc.

- 1 Insert the USB device.



- 2 Press the  button repeatedly on the unit or press the **USB** button on the remote control to select **USB** mode.
  - ↳ [AUX/USB] LED indicator blinks white.

- 3 During playback:

Button	Action
	Start, pause or resume play.
	Skip to the previous or next track.

## Tips

- The unit can support USB devices with up to 32 GB of memory.
- This unit can play MP3 / WAV / FLAC.
- Support a USB port: 5V  $\overline{\text{V}}$ , 500mA.

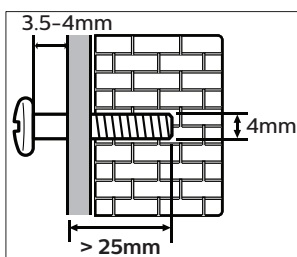


# 5 Wall mount

## Note

- Improper wall mounting may result in accident, injury or damage. If you have any query, contact Consumer Care in your country.
- Before wall mounting, make sure the wall can support the weight of your Soundbar.
- Before wall mount, you need not remove the rubber feet at the bottom of the Soundbar, otherwise the rubber feet cannot be fixed back.
- Depending on the type of wall mounting your Soundbar, make sure that you use screws of a suitable length and diameter.
- Please check whether the USB port on the back of the Soundbar is connected to a USB device. If it is found that the connected USB device affects the wall-mount, you need to use another USB device of the appropriate size.

### Screw length/diameter

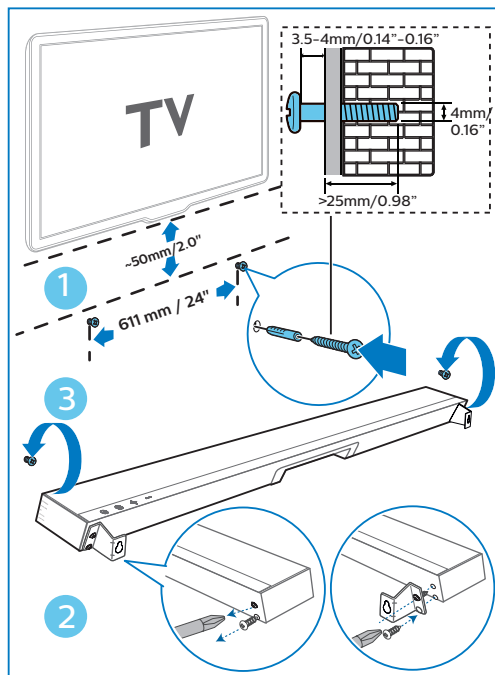


### Suggested wall mounting height

You are recommended to install the TV first before wall mounting the soundbar. With a TV preinstalled, wall mount the soundbar 50mm/2.0" in distance from the bottom of the TV.

- 1 Drill 2 parallel holes ( $\varnothing$  3-8mm each according to wall type) on the wall. The distance between the holes should be 611mm / 24".
  - ↳ Secure the dowels and screws in the holes.

- 2 Remove the screws (x4) from the main unit.
  - ↳ Attach the wall brackets (x2) to the main unit with the screws removed from the main unit.
- 3 Hang the Soundbar on the fastening screws.



# 6 Product specifications



## Note

- Specifications and design are subject to change without notice.

---

## Amplifier Section

Power output (RMS): 140W @10% THD

- Power output (max): 288W

---

## Bluetooth

- Bluetooth profiles: A2DP, AVRCP
- Bluetooth version: 4.2 + EDR
- Frequency band/Output power: 2402 MHz ~ 2480 MHz /  $\leq 5$  dBm
- 2.4G wireless frequency range: 2400 MHz ~ 2483 MHz
- 2.4G wireless maximum power: 6dBm

---

## Main unit

- Power Supply: DC 24V  $\equiv$  1.5A
- Adapter for Main Unit:  
Model : KA3601A-2401500DE  
Input : 100-240V~ 50-60Hz 1.0A Max  
Output : 24V  $\equiv$  1.5A
- Power Consumption: 18.0W
- Standby Consumption:  $< 0.5$  W
- USB: 5V  $\equiv$  500mA
- Frequency Response: 180Hz - 20KHz
- Audio Input Sensitivity (AUX): 500mV
- Speakers Impedance: 8 $\Omega$  x 2
- Dimension (W x H x D): 650 x 35 x 81 mm
- Weight: 1.0 kg
- Operating Temperature: 0°C - 45°C

---

## Subwoofer

- Power Supply: 100-240 V~ 50-60 Hz
- Power Consumption: 20 W
- Standby Power Consumption:  $< 0.5$  W
- Frequency Response: 40Hz - 180Hz
- Impedance: 4  $\Omega$
- Dimensions (W x H x D): 120 x 402 x 300 mm
- Weight: 4.8 kg
- Operating Temperature: 0°C - 45°C

---

## Remote control

- Distance/Angle: 6m/30°
- Battery Type: CR2025

---

## Supported Audio formats

- **HDMI ARC**  
Dolby Digital, LPCM 2ch
- **OPTICAL**  
Dolby Digital, LPCM 2ch
- **BLUETOOTH**  
SBC
- **USB**  
MP3, WAV, FLAC

# 7 Troubleshooting



## Warning

- Risk of electric shock. Never remove the casing of the product.

To keep the warranty valid, never try to repair the product yourself.

If you have problems using this product, check the following points before you request service. If you still have a problem, get support at [www.philips.com/support](http://www.philips.com/support).

### No power

- Ensure that the AC cord is properly connected.
- Ensure that there is power at the AC outlet.
- Press standby button on the remote control or Soundbar to turn the Soundbar on.

### No sound

- Increase the volume. Press Volume Up on the remote control or on the Soundbar.
- Press MUTE on the remote control to ensure the Soundbar is not muted.
- Press source buttons to select a different input source.
- When using either of the Digital input, if there is no audio:
  - Try setting the TV output to PCM or
  - Connect directly to your Blu-ray/other source, some TVs do not pass through digital audio.

- Your TV may be set to variable audio output. Confirm that the audio output setting is set to FIXED or STANDARD, not VARIABLE. Consult your TV's user manual for more detailed information.
- If using Bluetooth, ensure that the volume on your source device is turned up and that the device is not muted.

### Remote control does not work

- Before you press any playback control button, first select the correct source.
- Reduce the distance between the remote control and the unit.
- Insert the battery with its polarities (+/-) aligned as indicated.
- Replace the battery.
- Aim the remote control directly at the sensor on the front of the unit.

### I can't find the Bluetooth name of this unit on my Bluetooth device

- Ensure the Bluetooth function is activated on your Bluetooth device.
- Re-pair the unit with your Bluetooth device.

### This is a 15 mins power off function, one of the ERPII standard requirement for saving power

- When the unit's external input signal level is too low, the unit will be turned off automatically in 15 minutes. Please increase the volume level of your external device.

### The subwoofer is idle or the indicator of subwoofer do not light up

- Please unplug power cord from the mains socket, and plug it in again after 3 minutes to reset the subwoofer.



The Bluetooth® word mark and logos are registered trademarks owned by Bluetooth SIG, Inc.

The terms HDMI, HDMI High-Definition Multimedia Interface, and the HDMI Logo are trademarks or registered trademarks of HDMI Licensing Administrator, Inc.

Manufactured under license from Dolby Laboratories. Dolby, Dolby Audio and the double-D symbol are trademarks of Dolby Laboratories.

Specifications are subject to change without notice. Please visit [www.philips.com/support](http://www.philips.com/support) for the latest updates and documents.

Philips and the Philips Shield Emblem are registered trademarks of Koninklijke Philips N.V. and are used under license. This product has been manufactured by and is sold under the responsibility of MMD Hong Kong Holding Limited, or one of its affiliates, and MMD Hong Kong Holding Limited, is the warrantor in relation to this product.

