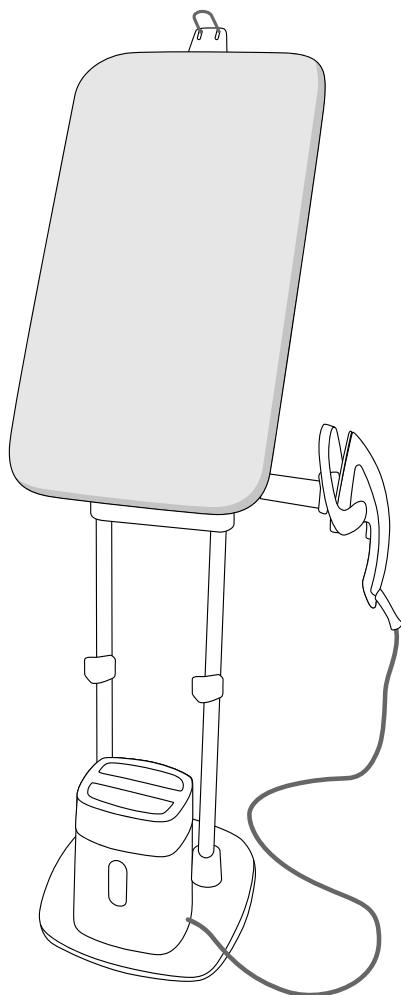



Tefal[®]

EN



IXEO QT10XX

Important safety recommendations

- Please read these instructions carefully before first use. This appliance has been designed for domestic and indoor use only. Any commercial use, inappropriate use or failure to comply with the instructions, the manufacturer accepts no responsibility and the guarantee will not apply.
- Never unplug the appliance by pulling the power cord. Always unplug your appliance:
 - before filling the water tank.
 - before cleaning the appliance,
 - after each use.
- The appliance must be used and placed on a flat, stable, heat-resistant surface. When you place the appliance on its stand, ensure that the surface on which the stand is placed is stable.
- This appliance is not intended to be used by persons (including children) with reduced or impaired physical, sensory or mental capabilities or persons lacking appropriate knowledge or experience, unless a person responsible for their safety provides either supervision or appropriate instructions concerning use of the appliance prior to its use.
- Children should be supervised to ensure they do not play with the appliance.
- This appliance can be used by children aged from 8 years and above and persons with reduced physical, sensory or mental capabilities or lack of experience and knowledge if they have been given supervision or instruction concerning use of the appliance in a safe way and understand the hazards involved. Children shall not play with the appliance. Cleaning and user maintenance shall not be made by children without supervision.
- Keep the iron and its cords out of reach of children less than 8 years of age when it is in use or cooling down.
-  The surfaces of your appliance can reach very high temperatures when functioning, which may cause burns. Do not touch the hot surfaces of the appliance (accessible metal parts and plastic parts adjacent to the metallic parts) until the appliance is completely cool.
- Never leave the appliance unattended when it is connected to the mains. Before storing the appliance, once it is unplugged, please wait until it has cooled down (around 1 hour).

- The appliance must not be used if it has been dropped, if it has any visible damage, if it leaks, or if it functions abnormally in any way. Do not attempt to dismantle your appliance: have it examined at an Approved Service Centre to avoid any danger.
- Check the electrical power cord and water connection cord for signs of wear or damage prior to use. If the electrical power cord or the water connection cord is damaged, it must be replaced by an Approved Service Centre to avoid any danger.
- Care should be taken when using the appliance due to the emission of steam.
- For filling, cleaning and descaling your appliance, please refer to the instruction for use.

- For your safety, this appliance conforms to all applicable regulations (Low Voltage Directive, Electromagnetic Compatibility, Environment, etc).
- Your appliance is an electrical appliance: it must be used under normal conditions of use. It is designed for domestic use only.
- Always plug your appliance:
 - into a mains circuit with voltage between 220 V and 240 V,
 - into an earthed electrical socket.
 Connecting to the wrong voltage may cause irreparable damage to the appliance and will invalidate your guarantee. If you are using a mains extension lead, ensure that it is correctly rated (16A) with an earth, and is fully extended.
- Completely unwind the power cord before plugging into an earthed socket.
- The soleplate of your appliance can reach extremely high temperatures, and can cause burns: do not touch them. Never touch the electrical power and water connection cords with the soleplate of the appliance.
- Your appliance emits steam, which can cause burns. Always handle the appliance with care, especially when ironing/steaming vertically. Never direct the steam towards people or animals.
- Never immerse your appliance in water or any other liquid. Never place it under a running tap.
- The plug must be removed from the socket-outlet before the water reservoir is filled with water.
- Unplug the the appliance during filling and cleaning.
- Be careful when assembling the appliance and when adjusting the board to avoid fingers being caught in the mechanisms.
- The use of accessory attachments other than those provided by the manufacturer is not recommended and may result in fire, electric shock or personal injury.

Before first use

When you first use the iron, some smoke or a harmless odour may be produced or there may be a small discharge of particles. This will not affect the use of the appliance and will disappear quickly.



- Not for drinking



- Keep out of the reach of children



- Dispose with household refuse



- Keep in cool dry place

What water to use?

Your appliance has been designed to use untreated tap water. However, the self-clean function must be performed regularly on the steam chamber to remove limescale.

Do not use pure demineralised or pure distilled water, water from clothes dryers, scented or softened water, rain water, filtered, bottled or boiled water, water from refrigerators, batteries or air conditioners as these may damage the appliance. These types of water contain organic waste, mineral elements that become concentrated when heated and cause spitting, brown staining, leaking or premature wear on your appliance. If your water is very hard, mix 50% untreated tap water with 50% distilled water (available in hardware stores).

**PLEASE RETAIN THIS INSTRUCTION
BOOKLET FOR FUTURE REFERENCE**



Environment protection first !

- ① Your appliance contains valuable materials which can be recovered or recycled.
- ② Leave it at a local civic waste collection point.

On first use, fumes and odour may come from the appliance. They do not affect the use of the appliance and disappear quickly.

On first use, small particles may come from the iron. These are part of the production process and do not affect yourself or your garments. They disappear quickly.

The appliance must be used and placed on a flat, stable, heat-resistant surface. When you place the appliance on its stand, ensure that the surface on which the stand is placed is stable.

— What kind of water to use?

Your iron has been designed to use tap water. If your water is very hard, mix 50% untreated tap water and 50% distilled water.



IMPORTANT

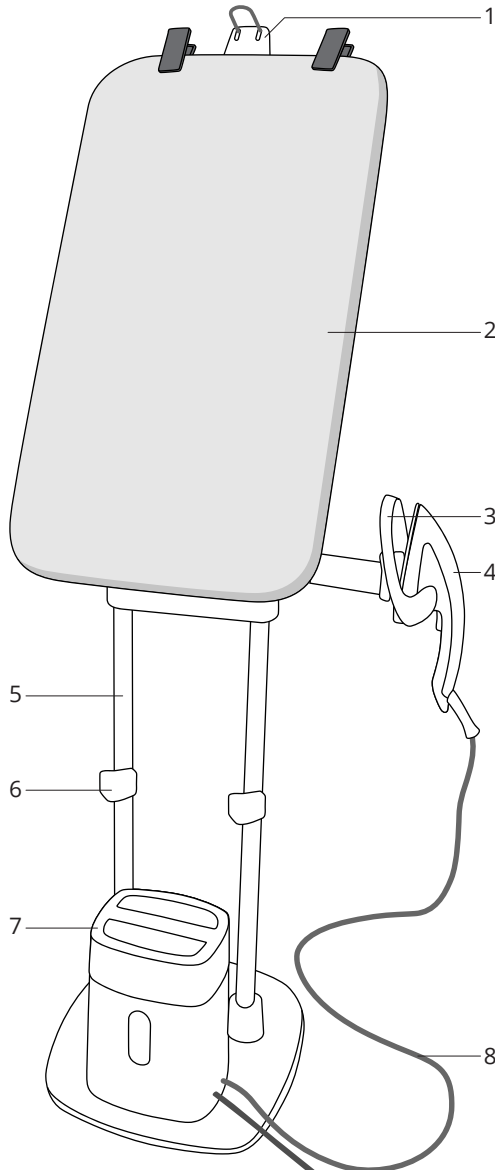
Never use your appliance board with a classic iron or a steam generator. Only use your appliance iron.



IMPORTANT

Do not use pure demineralised or pure distilled water, water from clothes dryers, scented or softened water, rain water, filtered, bottled or boiled water, water from refrigerators, batteries or air conditioners as these may damage the appliance. These types of water contain organic waste, mineral elements that become concentrated when heated and cause spitting, brown staining, leaking or premature wear on your appliance. If your water is very hard, mix 50% untreated tap water with 50% distilled water (available in hardware stores).

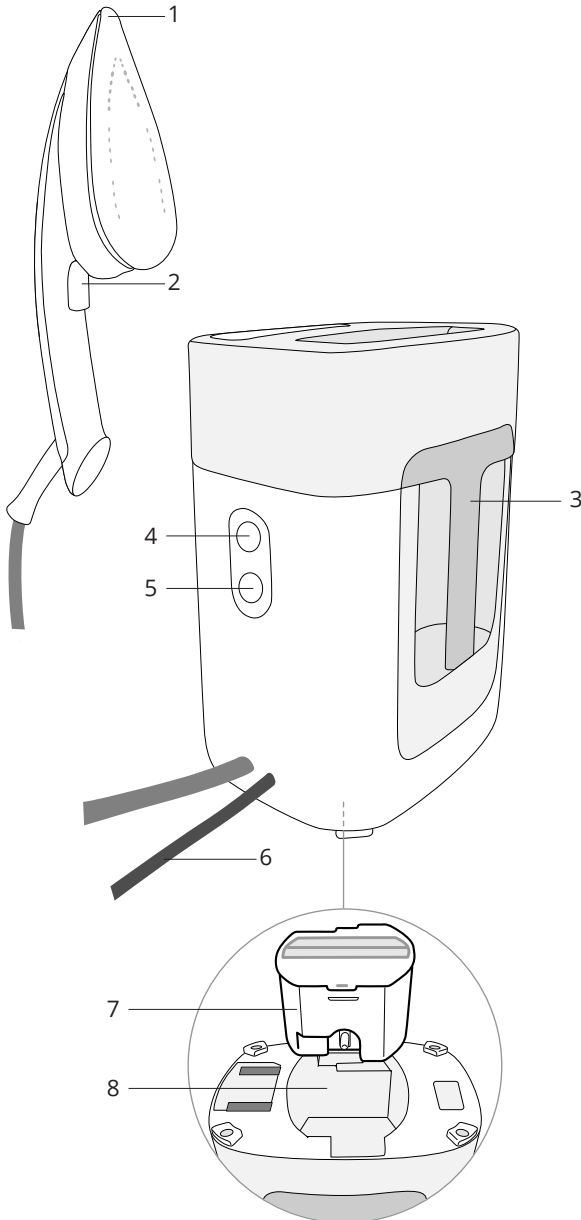
Product



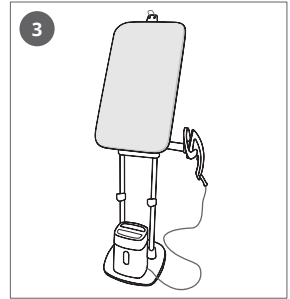
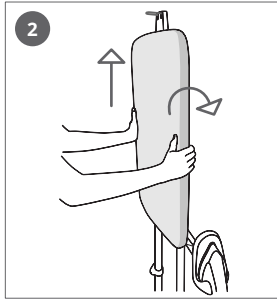
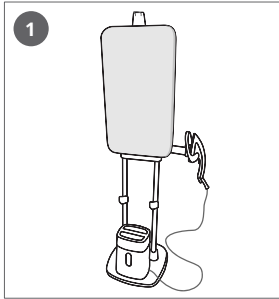
- EN**
1. Hanger hook
 2. Tilting board
 3. Iron rest
 4. Iron
 5. Collapsible body
 6. Height adjusters
 7. Steam unit
 8. Steam hose

Iron and steam unit

- EN** 1. Iron soleplate
- 2. Steam trigger
- 3. Water tank
- 4. Anti calc light indicator
- 5. On/Off button
- 6. Power cord
- 7. Anti-Calc cartridge
- 8. Cartridge compartment

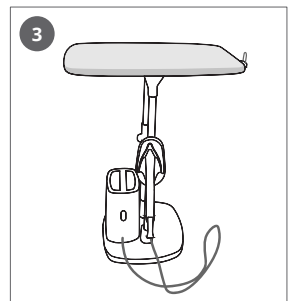
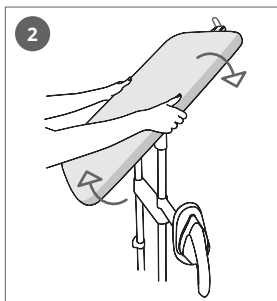
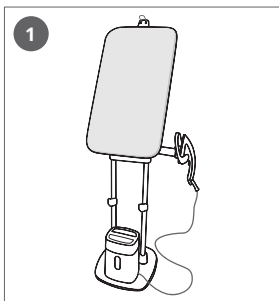


Incline the board



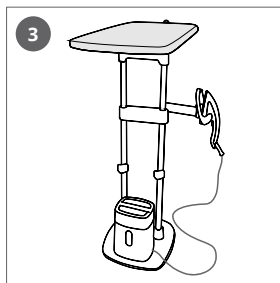
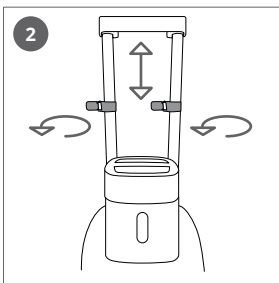
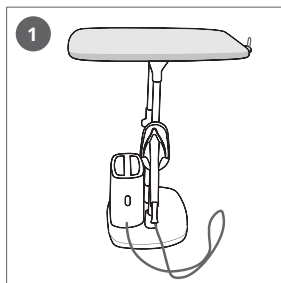
EN Put your hands on each side of the board, raise it vertically, and tilt it back until inclined position.

Move the board to the horizontal position



EN Put your hands on each side of the board, raise it vertically, and tilt it back until horizontal position.

Adjust the height

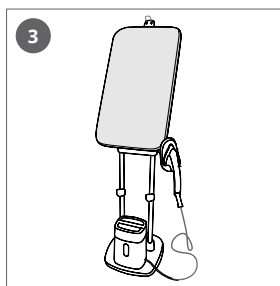
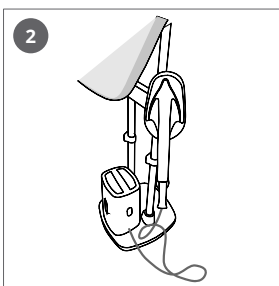
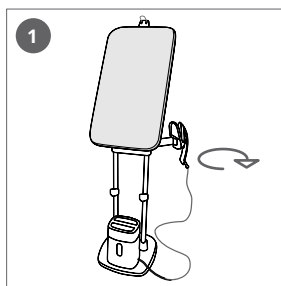


EN At the horizontal position, unlock the height adjusters. Raise or lower the board until the desired position. Lock the pole lockers.



EN When adjusting the height of the board make sure you hold on to it as there is a risk that it may fall.

Orientation of the iron rest



EN The iron rest is on a swivel and can be adjusted to suit the user.

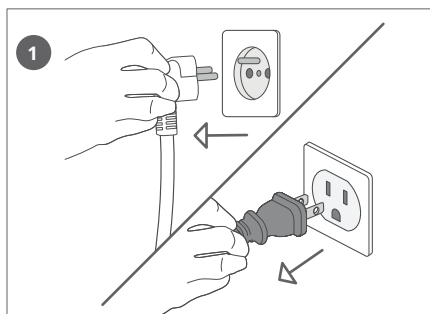
First use of the appliance

3

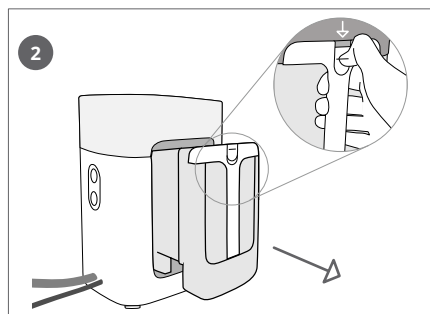


EN Ensure that the anti-calc is installed before switching on the appliance. To install the anti-calc cartridges, please refer to assembly instructions.

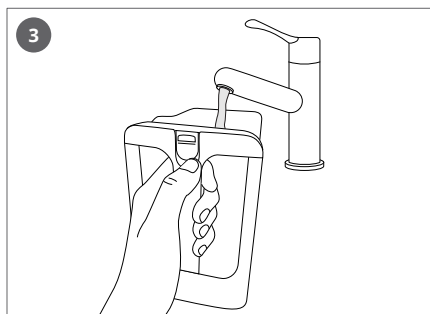
Fill the water tank



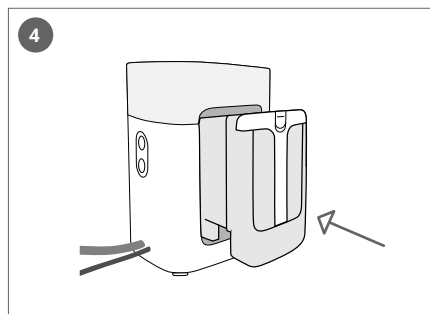
EN Unplug the appliance.



EN Unlock & remove the water tank.

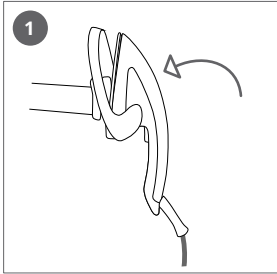


EN Fill the water tank.

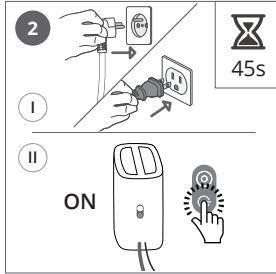


EN Replace the water tank and lock it.

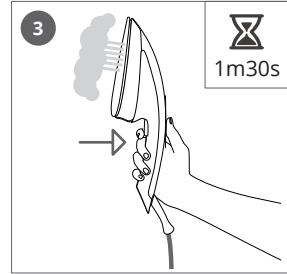
Turning on the iron



EN Put the iron on the iron rest.



EN Plug in the appliance and switch it on. Wait for 45 seconds.

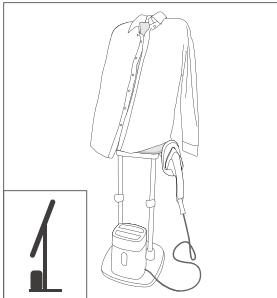


EN Press the trigger for approximately 1 minute 30 seconds until steam comes out.
Steam pump may produce some noise during this stage, it is completely normal.

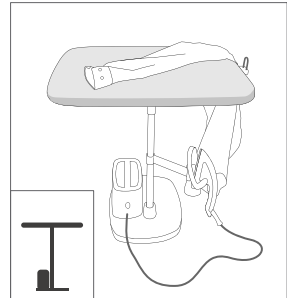
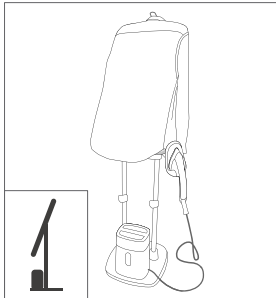
4

Ironing & Steaming

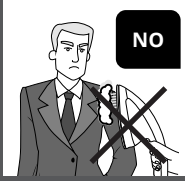
Shirt



EN In the inclined position, put the shirt on the board to iron the back and the front.

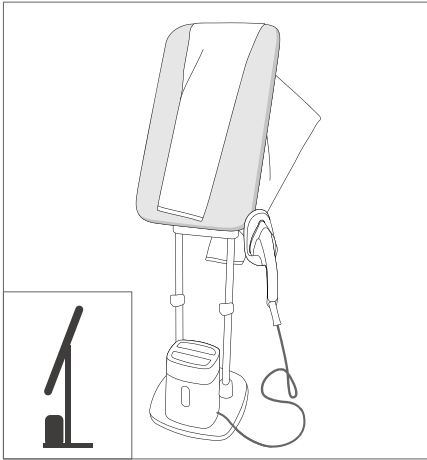


EN Use the board at the horizontal position to iron the details.

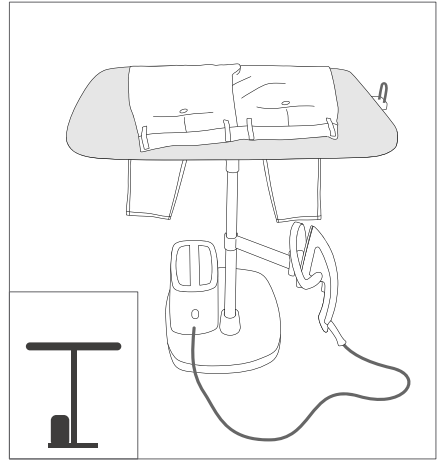


EN Never iron or steam directly on a garment being worn by someone.

Trousers

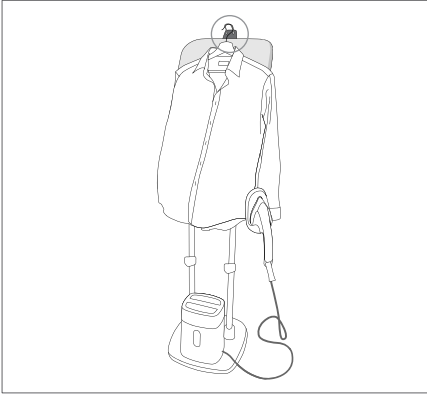


EN On the inclined board, hang the trousers to iron the legs.

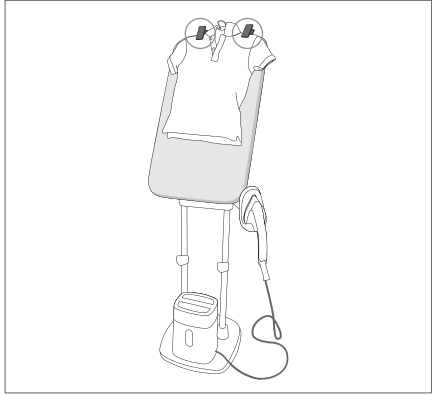


EN Use the board in the horizontal position to iron the details.

Accessories*

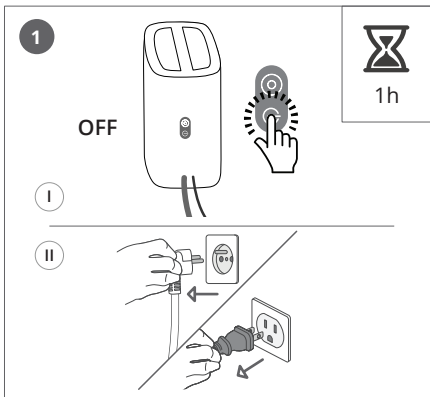


EN Use the hanger hook to iron/steam a garment placed on a hanger.

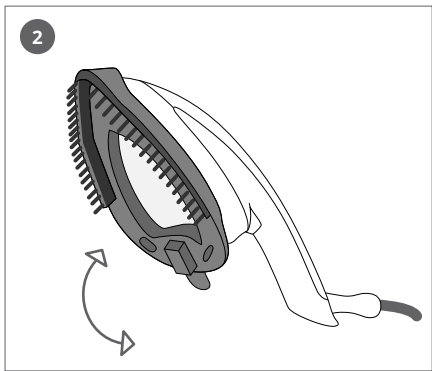


EN Use the clips to hold a garment on the board.

— Fabric brush



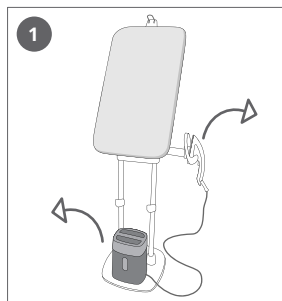
EN Before you remove or attach the brush, switch off the appliance and allow it to cool down for 1 hour.



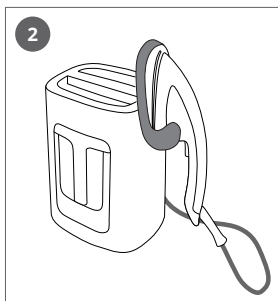
EN Put the steam brush on the iron soleplate. This accessory helps to open the garment fibres for better steam penetration.

* Depending on model

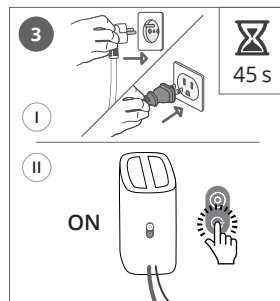
Use the portable steam unit



EN 1 Remove the steam unit off its base. Remove the iron and the iron rest.



EN 2 Position the iron and its iron rest on the steam unit.

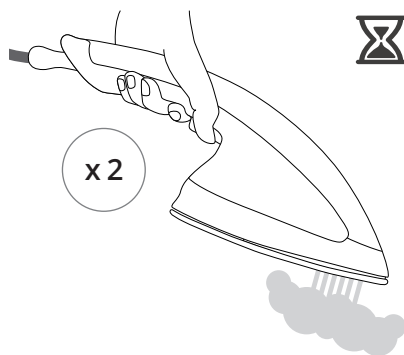


EN 3 Move around with the appliance. Plug in and switch on the appliance, and wait 45seconds before using the iron.



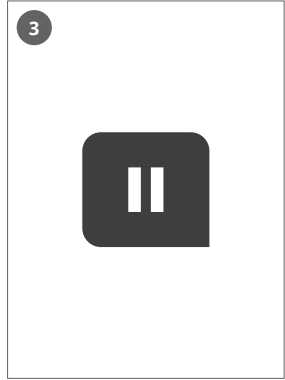
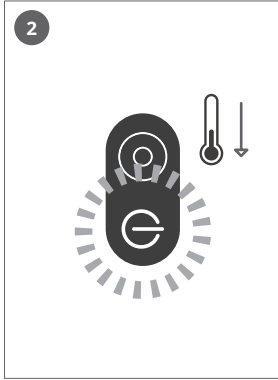
EN Be careful of of heat and steam when using the appliance.

Steam boost

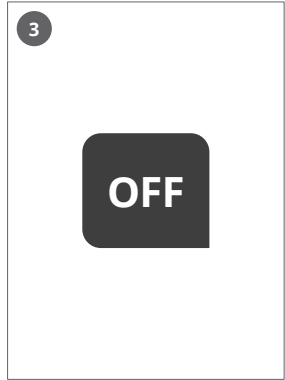
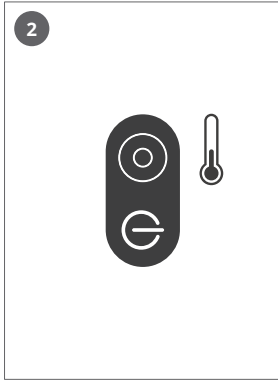


EN Press the steam trigger two times to activate the steam boost.

Auto-off



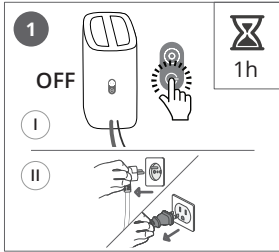
EN After 8 minutes of inactivity, the steam unit will change to stand by mode.



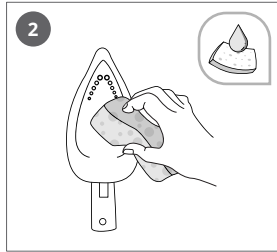
EN After 38 minutes of inactivity, the steam unit will switch off automatically.

Cleaning

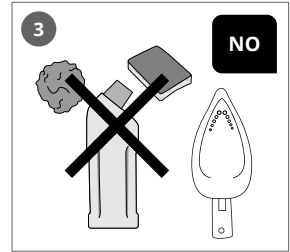
5



EN Switch off the appliance. Wait 1 hour to allow it to cool down completely.



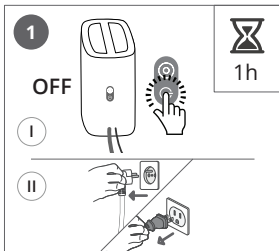
EN Clean the soleplate with a damp soft cloth or sponge.



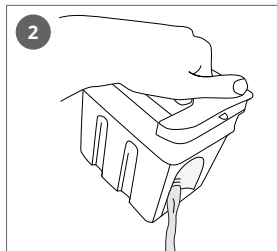
EN Never use abrasive products or surfaces to clean the soleplate.

Storing

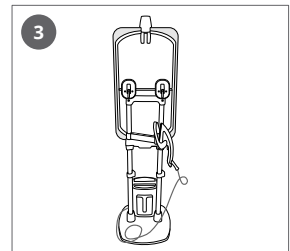
6



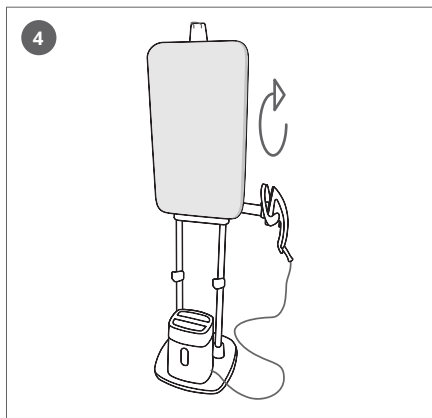
EN Switch off the appliance. Wait 1 hour to allow it to cool down completely.



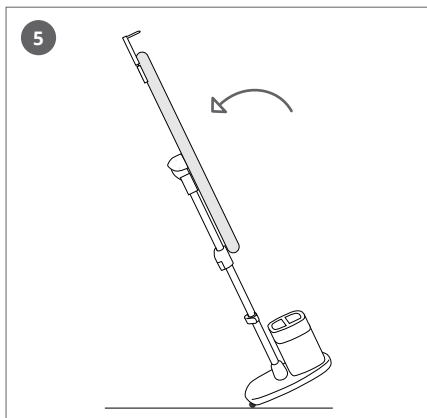
EN Empty the water tank.



EN Move the iron rest to the back of the board.



EN Tilt up the board to the vertical position.



EN Ensuring the water tank is empty, lean the appliance backwards if necessary, in order to move and store it away.

EN Transportation advice: To move your appliance, use the poles as grasping area.

7

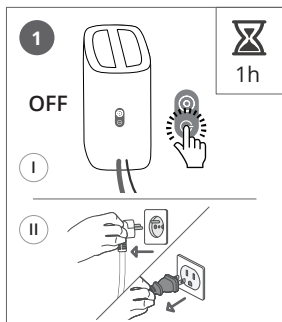
Anti-calc



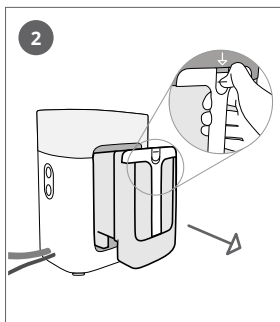
EN When the anti-calc cartridge comes to its end of life, the anti-calc light flashes.



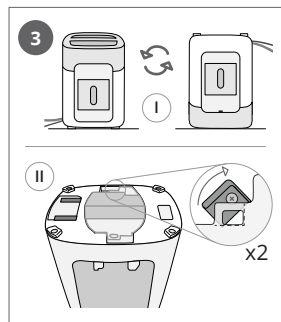
EN When the anti-calc light is on continuously, the calc cartridge needs to be changed immediately. If this is not done, the appliance will switch off automatically.



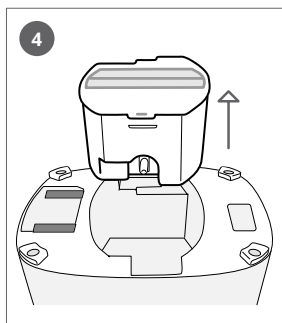
EN Switch off the appliance. Wait 1 hour to allow it to cool down completely.



EN Remove the water tank.



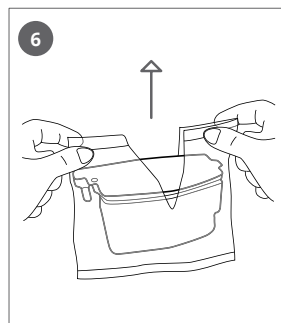
EN Turn the steam unit over and open the 2 locking tabs.



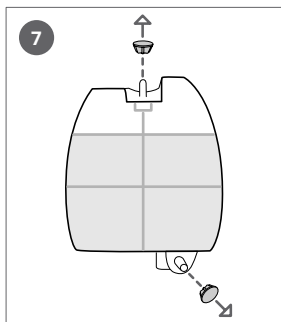
EN Remove the anti-calc cartridge.



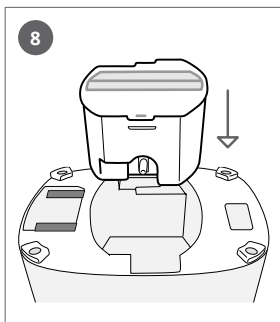
EN Discard of the old anti-calc cartridge.



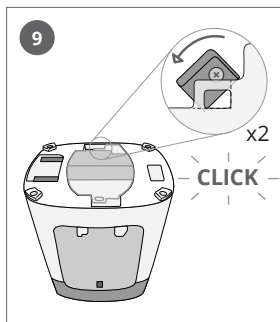
EN Open the new anti-calc cartridge.



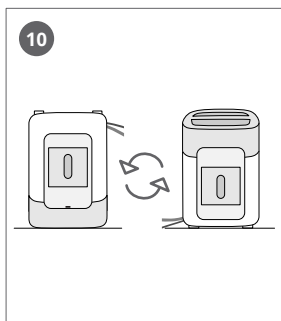
EN Remove the stoppers.



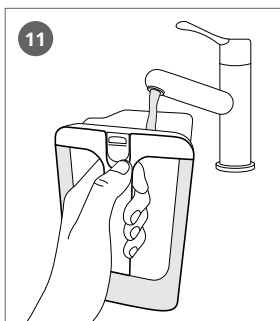
EN Insert the anti-calc cartridge into the steam unit.



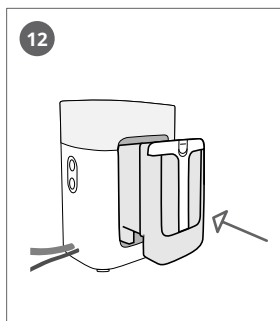
EN Close the 2 locking tabs of the anti-calc cartridge compartment.



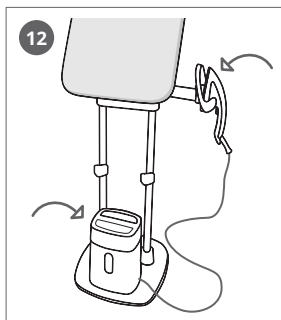
EN Turn the steam unit back over so that it is the right way up.



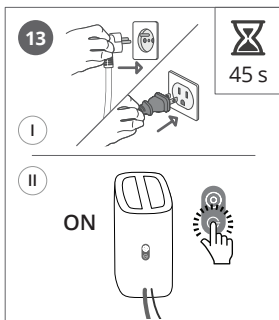
EN Fill the water tank.



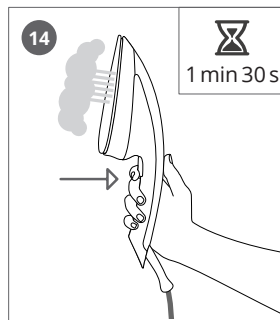
EN Replace the water tank, and lock it.



EN Put the iron and the steam unit on the base.



EN Plug in and switch on the appliance. Wait for 45 seconds.



EN Press the trigger for approximately 1 minute and 30 seconds until steam comes out.

Problems with your appliance?

PROBLEM	POSSIBLE CAUSES	SOLUTIONS
Brown water is dripping from the soleplate and soiling your clothes.	You are using chemical descaling products.	Do not put any descaling product into the water tank.
	You are not using the right water.	Perform a self-clean and consult the "What water to use?" section.
The soleplate is dirty or brown and may soil clothes.	The soleplate has not been cleaned.	Clean the soleplate as indicated in the user guide.
Your appliance produces little or no steam.	Your appliance has a build up of limescale.	Please refer to anti-calc section.
The soleplate is scratched or damaged.	You have positioned your iron flat on the metallic iron support. You have cleaned your soleplate with an abrasive cloth or steel wool.	Always place your iron in the support base. Clean the soleplate as indicated in the user guide.
Your soleplate emits particles.	Limescale is starting to build up on your soleplate.	Perform a self-clean .
Water drips from the holes in the soleplate.	You are using steam while the iron is not hot enough.	Wait until the thermostat light goes out.
A loud noise from the appliance.	Not enough water in the tank.	Fill the tank.
	The first use process has not been carried out or has not been carried out correctly.	Carry out the first use process for the water (refer to the paragraph on first use).
	The internal system needs to fill up again.	Press and hold the steam control button.
Do not completely empty the water tank.		

Cartridge

Anti calc maintenance

Do not put any descaling substances (vinegar, industrial descaling products, etc.) in the water tank or in the anti calc compartment, they could damage your appliance.

Using the appliance without changing the cartridge can damage the appliance and stop its steaming performance. Press on the anti calc button only if you have changed the cartridge.

To ensure the efficiency of the cartridge, please remove it from its plastic bag just before use. The international guarantee will not cover any damages which occurs as a result of using the appliance without changing the cartridge.