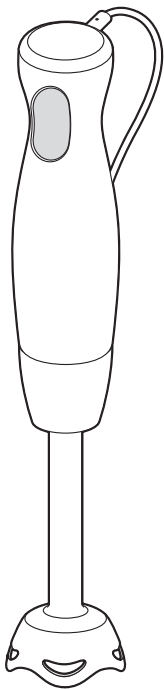


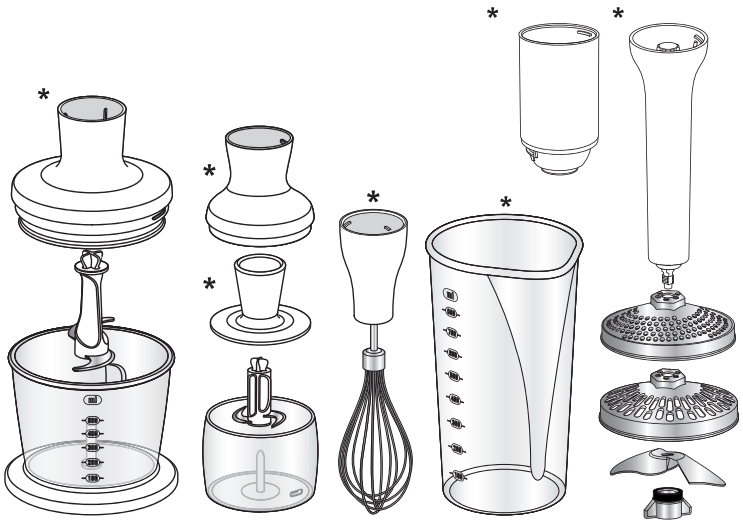
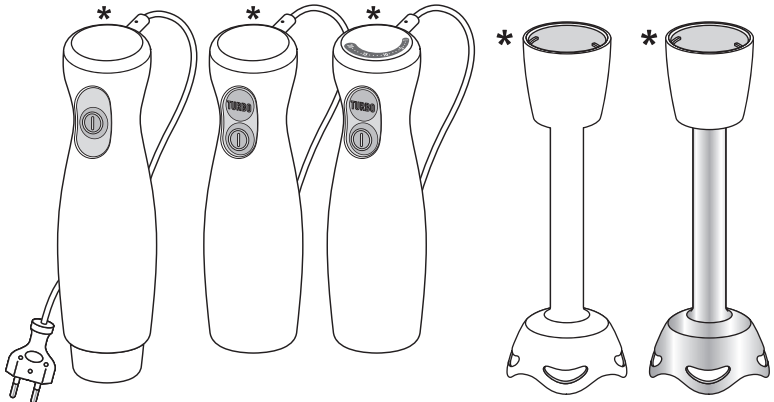
EN

KO

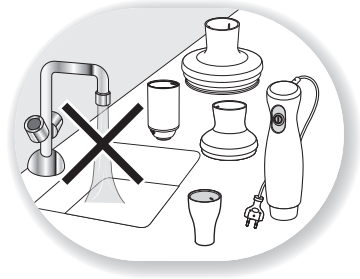
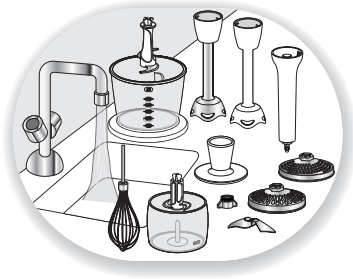


Read safety instructions and booklet carefully before using for the first time.

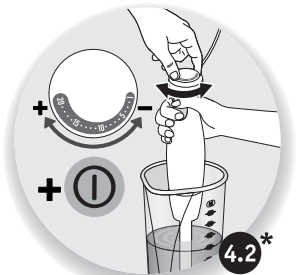
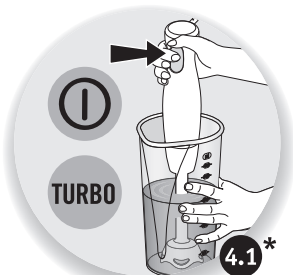
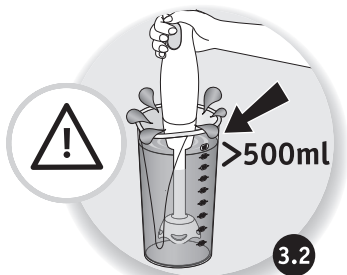
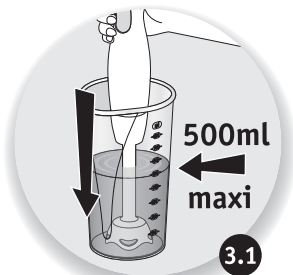
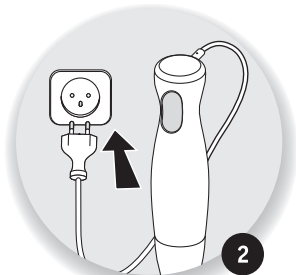
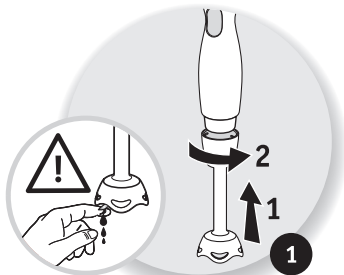
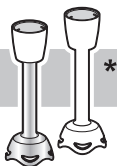
처음 사용 전 안전 지침과 현 책자를 잘 읽어두시기 바랍니다.



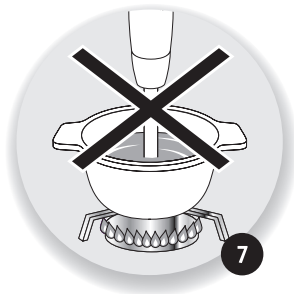
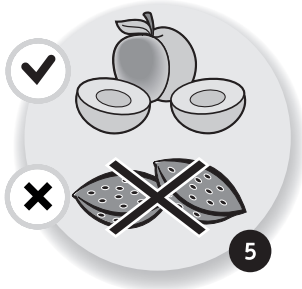
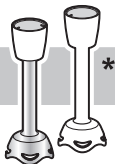
\* depending on the model / 모델에 따라 다름



# 2.1



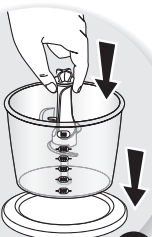
## 2.2



\* depending on the model / 모델에 따라 다름

3

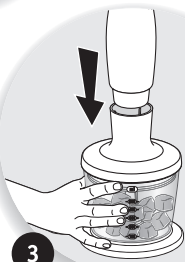
\* 450/500/600ml



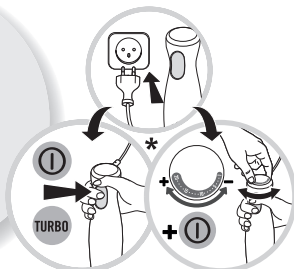
1



2

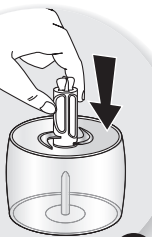


3

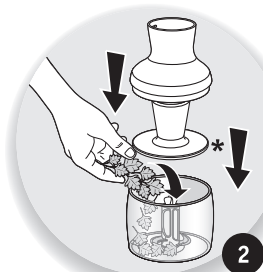


4

\* 150ml

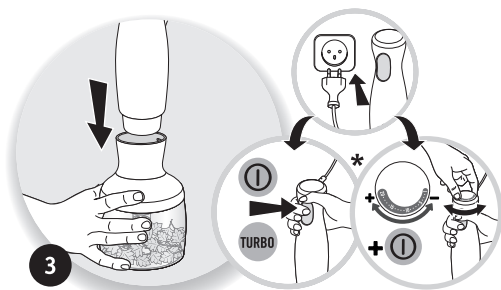


1

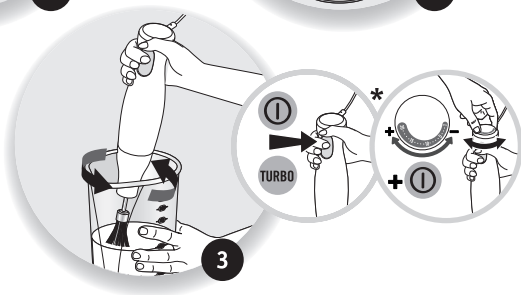
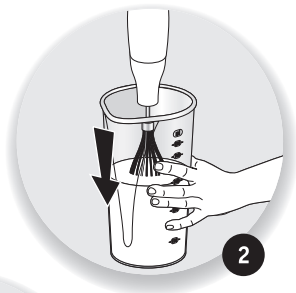
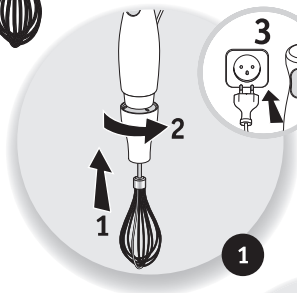


2

6 \* depending on the model / 모델에 따라 다름



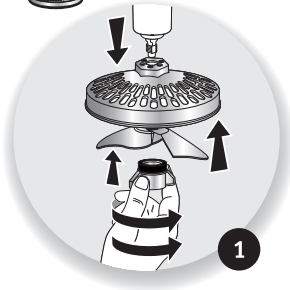
5 \*



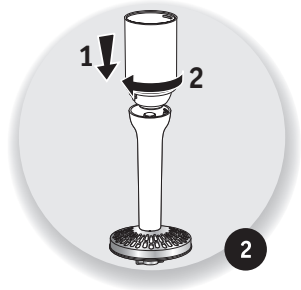
\* depending on the model / 모델에 따라 다름

6

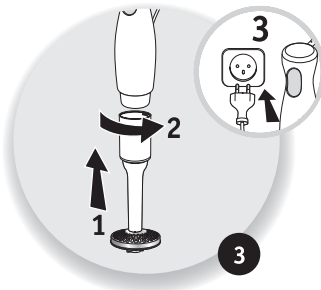
\*



1




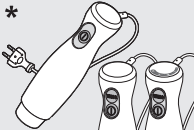
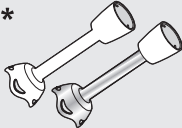











2











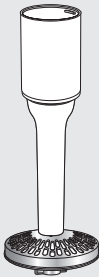


3




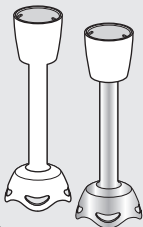



















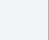

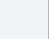

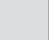











			
* 	✗	✗	✓
* 	✓	✓	✗
* 	✗	✗	✓
	✓	✓	✓
	✓	✓	✗
* 	✗	✗	✓
	✓	✓	✓
	✓	✓	✗
* 	✓	✓	✓
	✗	✗	✓
* 	✓	✓	✓

\* depending on the model / 모델에 따라 다름

			
* 	✗	✗	✓
* 	✓	✓	✓

				
* 		① turbo 	1min	1Kg

		* 		
*  MAX 20s	 200g + 300ml	① turbo 	20s	500g
		① turbo 	20s	500ml
		① turbo 	15s	500ml
		① turbo 	20s	1Kg
		① turbo 	15s	500ml
*450/500/600ml 		① turbo 	10s	200g
		① turbo 	20s	20g
		① turbo 	20s	20g
* 150ml 	* 1000W 	① turbo 	3s	90g
	* 500-900W 	① turbo 	3s	70g
	* 300-450W 	① turbo 	3s	100g
		① turbo 	10s	5g
* 		① turbo 	3min	4max
		① turbo 	3min	200ml
		① turbo 	3min	1L

\* depending on the model / 모델에 따라 다름

If your appliance does not work, check it is properly connected to the mains and the power cord is in good condition. Your appliance still does not work? Contact an approved service centre (see the service booklet).

기기가 작동하지 않을 경우, 전원 연결 및 전선 상태를 확인하십시오. 기기가 여전히 작동하지 않습니까? 이 경우 공인 서비스 센터에 문의하십시오(서비스 책자 내 리스트를 참조)

## **TEFAL/T-FAL \* INTERNATIONAL LIMITED GUARANTEE**

 : [www.tefal.com](http://www.tefal.com)

This product is repairable by TEFAL/T-FAL \*, during and after the guarantee period.

Accessories, consumables and end-user replaceable parts can be purchased, if locally available, as described on the TEFAL/T-FAL

internet site [www.tefal.com](http://www.tefal.com)

### **The Guarantee\*\***

TEFAL/T-FAL guarantees this product against any manufacturing defect in materials or workmanship during the guarantee period within those countries\*\*\* as stated in the attached country list, starting from the initial date of purchase or delivery date. The international manufacturer's guarantee covers all costs related to restoring the proven defective product so that it conforms to its original specifications, through the repair or replacement of any defective part and the necessary labour. At TEFAL/T-FAL's choice, a replacement product may be provided instead of repairing a defective product. TEFAL/T-FAL's sole obligation and your exclusive resolution under this guarantee are limited to such repair or replacement.

### **Conditions & Exclusions**

TEFAL/T-FAL shall not be obliged to repair or replace any product which is not accompanied by a valid proof of purchase. The product can be taken directly in person or must be adequately packaged and returned, by recorded delivery (or equivalent method of postage), to a TEFAL/T-FAL authorised service centre. Full address details for each country's authorised service centres are listed on TEFAL/T-FAL website ([www.tefal.com](http://www.tefal.com)) or by calling the appropriate consumer Service centre set out in the attached country list. In order to offer the best possible after-sales service and constantly improve customer satisfaction, TEFAL/T-FAL may send a satisfaction survey to all customers who have had their product repaired or exchanged in a TEFAL/T-FAL authorised service centre. This guarantee applies only for products purchased and used for domestic purposes and will not cover any damage which occurs as a result of misuse, negligence, failure to follow TEFAL/T-FAL instructions, or a modification or unauthorised repair of the product, faulty packaging by the owner or mishandling by any carrier. It also does not cover normal wear and tear, maintenance or replacement of consumable parts, or the following:

- using the wrong type of water or consumable
- ingress of water, dust or insects into the product (excluding appliances with features specifically designed for insects)
- scaling (any de-scaling must be carried out according to the instructions for use)
- damage to any glass or porcelain ware in the product
- mechanical damages, overloading
- damage as a result of lightning or power surges
- accidents including fire, flood, etc
- professional or commercial use
- damages or poor results specifically due to wrong voltage or frequency as stamped on the product ID or specification

### **Consumer Statutory Rights**

This international TEFAL/T-FAL guarantee does not affect the Statutory Rights a consumer may have or those rights that cannot be excluded or limited, nor rights against the retailer from which the consumer purchased the product. This guarantee gives a consumer specific legal rights, and the consumer may also have other legal rights which vary from State to State or Country to Country. The consumer may assert any such rights at his sole discretion.

\*\*\*Where a product purchased in a listed country and then used in another listed country, the international TEFAL/T-FAL guarantee duration is the one in the country of usage, even if the product was purchased in a listed country with different guarantee duration. The repair process may require a longer time if the product is not locally sold by TEFAL/T-FAL. If the product is not repairable in the new country, the international TEFAL/T-FAL guarantee is limited to a replacement by a similar or alternative product at similar cost, where possible.

\*TEFAL household appliances appear under the T-FAL brand in some territories like America and Japan. TEFAL/T-FAL are registered trademarks of Groupe SEB.

Please keep this document for your reference should you wish to make a claim under the guarantee.

### **\*\*For Australia only:**

Our goods come with guarantees that cannot be excluded under the Australian Consumer Law. You are entitled to a replacement or refund for a major failure and compensation for any other reasonably foreseeable loss or damage. You are also entitled to have the goods repaired or replaced if the goods fail to be of acceptable quality and the failure does not amount to a major failure.

**\*\*For India only:** The guarantee length depends on the product and the State in India. Full guarantee terms must be checked at the point of sale. Products purchased outside and used in India benefit from a 2 year guarantee.

The guarantee covers exclusively the repair of a defective product, but at TEFAL's choice, a replacement product may be provided instead of repairing a defective product. It is mandatory that the consumer, to have his product repaired, has to log a service request on the dedicated Smartphone application TEFAL SERVICE APP or by calling TEFAL Consumer Care Center at **1860-200-1232, Opening hours Mon-Sat 09 AM to 06 PM**. Products returned by Post will not be covered by the guarantee. As a proof of purchase consumer needs to provide both this stamped guarantee card and cash memo.

## TEFAL 해외 제한 보증

 : [www.tefal.com](http://www.tefal.com)

본 제품은 보증 기간 중 및 이후에 TEFAL에 의해 수리 가능한 제품입니다.

액세서리, 소모품 및 사용자 교체 가능 부품은 현지 판매 되는 경우 구입 가능합니다. 자세한 설명은 TEFAL 인터넷 홈페이지 [www.tefal.com](http://www.tefal.com).

TEFAL .com을 참조하십시오.

### 보증

TEFAL은 구입 또는 배송 받은 첫 날부터, 칠부된 국가 목록에 기재되어 있는 해당 국가들\*\*\* 내에서 보증 기간 동안 자체 또는 제3 기술 상 결함에 대해 본 제품을 보증합니다.

해외 제조사 보증은 일체의 불량 부품의 교체 또는 수리 및 필요한 노무를 통해 입증된 결함 제품을 복원시킴으로써 해당 제품이 본래 명세에 부합되도록 만드는 것과 관련한 모든 비용을 그 대상으로 합니다. TEFAL의 재량에 따라, 결함 제품을 수리하는 대신 교체품이 제공될 수 있습니다. 본 보증 하에서 TEFAL의 유일한 의무이자 귀하의 배타적 해결책은 그러한 수리 또는 교체로 한정됩니다.

### 조건 & 제외 사항

TEFAL은 유효한 구입 증빙이 동반되지 않은 일체 제품에 대해 수리 또는 교체할 의무가 없습니다. 제품은 TEFAL 지정 서비스 센터로 직접 가져오거나, 적절하게 포장해 등기 우편(또는 그에 상응하는 우편 배송 방법)으로 반송해야 합니다. 각 국가별 지정 서비스 센터의 상세 주소는 TEFAL 인터넷 홈페이지([www.tefal.com](http://www.tefal.com))를 참조하십시오. 일부 국가 목록에 기재되어 있는 해당 소비자 서비스 센터에 전화 문의하십시오. TEFAL은 최고의 서비스 제공과 지속적인 고객 만족 향상을 위해 TEFAL의 공식 서비스 센터에서 수리를 받거나 교환을 받은 적인 오신 고객님들께 만족도 설문 조사서를 보내기도 합니다. 본 보증은 가정 내 사용 용도로 구입 및 사용되는 제품에 한해 적용되며 오용, 부주의, TEFAL의 사용 지시 사항을 따르지 않음, 또는 제품의 변형 또는 무허가 수리, 소유자에 의한 잘못된 포장 또는 일체 운반자에 의한 취급 부주의로 인해 발생할 수 있는 일체 손상은 적용 대상으로 하지 않습니다. 또한, 정상적인 마모, 소모품의 유지관리 또는 교체, 또는 다음 사항은 적용 대상으로 하지 않습니다:

- 잘못된 종류의 물 또는 소모품을 사용하는 경우
- 제품 ID 또는 명세에 표시되어 있는 전압 또는 주파수와는 다른 전압 또는 주파수를 사용한 때 따른 손상 또는 잘못된 결과
- 물때 제거(일체의 물때 제거 작업은 반드시 사용 지시 사항에 따라 실시해야 합니다)
- 기계적 손상, 과부하
- 제품에 포함되어 있는 일체의 유리 또는 자기의 손상
- 전원 서지 또는 번개 등에 의한 파손
- 화재, 수해 등의 사고
- 물, 먼지 또는 벌레의 제품 침투 (공충과 관련된 기능을 가진 제품 제외)
- 천문 또는 상업적 용도 사용

### 소비자의 법적 권리





TEFAL 해외 보증은 소비자가 보유하고 있을 수 있는 법적 권리 또는 제외 또는 한정될 수 없는 권리, 또는 해당 소비자가 해당 제품을 구입한 소매상에 대한 권리에 영향을 미치지 않습니다. 본 보증은 소비자에게 구체적인 법적 권리를 부여하며, 해당 소비자는 주별 또는 국가별로 다를 수 있는 다른 법적 권리를 보유하고 있을 수 있습니다. 소비자는 전적으로 본인 재량에 따라 그러한 권리를 행사할 수 있습니다.

\*\*\*제품을 목록에 나와 있는 한 국가에서 구입한 후 목록에 있는 다른 국가에서 사용하는 경우, TEFAL 해외 보증 기간은 구입 국가에 대해 다른 보증 기간이 적용된다 하더라도 사용 국가의 기간이 적용됩니다. 해당 제품이 TEFAL가 현지에서 판매하고 있는 제품이 아닌 경우 수리 처리 기간이 더 길어 질 수 있습니다. 새로 옮겨간 국가에서 해당 제품을 수리할 수 없는 경우, TEFAL 해외 보증은 가능한 경우 유사 제품 또는 대체 제품으로의 교환으로 한정될 수 있습니다. 보증기간이내에 보증 서비스 요청을 위하여 본 보증서를 잘 보관해 주시기 바랍니다.

**TEFAL/T-FAL INTERNATIONAL GUARANTEE: COUNTRY LIST**

SMALL HOUSEHOLD APPLIANCES

[www.tefal.com](http://www.tefal.com)

			
ARGENTINA	0800-122-2732	2 años 2 years	GROUPE SEB ARGENTINA S.A. Billinghurst 1833 3° C1425DTK Capital Federal Buenos Aires
ՀԱՅԱՍՏԱՆ ARMENIA	010 55-76-07	2 տարի 2 years	ՓԲԸ <<ԳՐՈՒՊԱ ՍԵԲ>> 125171, ՄՈՍԿՎԱ, ԼԵՆԻՆԳՐԱԴՍԿԱՆ ԽՈՒՆԻՒԻ, 16Ա, ԺԵՆ.3
AUSTRALIA	1300307824	1 year	Groupe SEB Australia PO Box 404 North Ryde, NSW, 1670
ÖSTERREICH AUSTRIA	01 890 3476	2 Jahre 2 years	GROUPE SEB DEUTSCHLAND GmbH Theodor-Stern-Kai 1 60596 Frankfurt
البحرين BAHRAIN	17716666	1 year	<a href="http://www.tefal-me.com">www.tefal-me.com</a>
БЕЛАРУСЬ BELARUS	017 2239290	2 года 2 years	ЗАО «Група СЕБ-Восток», 125171, Москва, Ленинградское шоссе, д. 16А, стр. 3
BELGIQUE BELGIE BELGIUM	070 23 31 59	2 ans 2 jaar 2 years	GROUPE SEB BELGIUM SA NV 25 avenue de l'Espérance - ZI 6220 Fleurus
BOSNA I HERCEGOVINA	Info-linija za potrošače 033 551 220	2 godine 2 years	SEB Development Predstavništvo u BiH Valtera Perića 6/I 71000 Sarajevo
BRASIL BRAZIL	11 2915-4400	1 ano 1 year	SEB COMERCIAL DE PRODUTOS DOMÉSTICOS LTDA Rua Venâncio Aires, 433, Pompéia, São Paulo/SP
БЪЛГАРИЯ BULGARIA	0700 10 330	2 години 2 years	Грун СЕБ България ЕООД бул. България 58 С, ет 9, офис 30 1680 София
CANADA	1-800-418-3325	1 an 1 year	GROUPE SEB CANADA 345 Passmore Avenue Toronto, ON M1V 3N8
CHILE	02 2 884 46 06	2 años 2 years	GROUPE SEB CHILE Comercial Ltda Av. Providencia, 2331, piso 5, oficina 501 Santiago
COLOMBIA	018000520022	2 años 2 years	GROUPE SEB COLOMBIA Apartado Aereo 172, Kilometro 1 Via Zipaquirá Cajica Cundinamarca
HRVATSKA CROATIA	01 30 15 294	2 godine 2 years	SEB mku & p d.o.o. Sarajevska 29, 10000 Zagreb
ČESKÁ REPUBLIKA CZECH REPUBLIC	731 010 111	2 roky 2 years	Groupe SEB CR s.r.o. Futurama Business Park (budova A) Sokolovská 651/136a 186 00 Praha 8
DANMARK DENMARK	44 66 31 55	2 år 2 years	GROUPE SEB NORDIC AS Tempovej 27 2750 Ballerup
مصر EGYPT	16622	سنة واحدة 1year	جروب سب ایجیٹ القاهرة: ١٢١ شارع الحجاز، مصر الجديدة الإسكندرية: طريق ٤ مايو، سموحة
EESTI ESTONIA	668 1286	2 aastat 2 years	Groupe SEB Polska Sp. z o.o. Gdański Business Center II D ul. Inflancka 4C 00-189 Warsaw

SUOMI FINLAND	9 8946 150	2 vuotta 2 years	Groupe SEB Finland OY Pakkalankuja 6 01510 Vantaa
FRANCE Continentale + Guadeloupe, Martinique, Réunion, St-Martin	09 74 50 47 74	2 ans 2 years	GROUPE SEB France Service Consommateur Tefal 112 Ch. Moulin Carron, TSA 92002 69134 ECULLY Cedex
DEUTSCHLAND GERMANY	0212 387 400	2 Jahre 2 years	GROUPE SEB DEUTSCHLAND GmbH Theodor-Stern-Kai 1 60596 Frankfurt
ELLADA GREECE	2106371251	2 χρόνια 2 years	SEB GROUPE ΕΛΛΑΔΟΣ Α.Ε. Καβαλιέρτου 7 Τ.Κ. 145 64 Κ. Κηφισιά
香港 HONG KONG	8130 8998	1 year	SEB ASIA Ltd. 9/F, South Block, Skyway House 3 Sham Mong Road, Tai Kok Tsui, Kowloon Hong-Kong
MAGYARORSZÁG HUNGARY	06 1 801 8434	2 év 2 years	GROUPE SEB CENTRAL-EUROPE Kft. 2040 Budaörs, Puskás Tivadar út 14
INDIA	1860-200-1232	2 years	Groupe SEB India (P) Limited A-25, 1st Floor, Rear Tower, Mohan Cooperative Industrial Suites, Mathura Road, New Delhi-110044
INDONESIA	+62 21 5793 7007	1 year	GROUPE SEB INDONESIA (Representative office) Sudirman Plaza, Plaza Marein 8th Floor JL Jendral Sudirman Kav 76-78, Jakarta 12910, Indonesia
ITALIA ITALY	1 99 207 354	2 anni 2 years	GROUPE SEB ITALIA S.p.A. Via Montefeltro, 4 20156 Milano
日本 JAPAN	0570-077772	1 year	株式会社グループセブジャパン 〒144-0042 東京都大田区羽田旭町11-1 羽田クロノゲート事務棟5F
الأردن JORDAN	5665505	1 year	www.tefal-me.com
ҚАЗАҚСТАН KAZAKHSTAN	727 378 39 39	2 жыл 2 years	ЖАҚ «Группа СЕБ- Восток» 125171, Мәскеу, Ленинградское шоссесі,16А, 3 үйі (У)그룹 세브 코리아 서울시 종로구 청계천로 35 관정빌딩 2층 03188
한국어 KOREA	080-733-7878	1 year	www.tefal-me.com
الكويت KUWAIT	1807777 Ext :2104	1 year	www.tefal-me.com
LATVJA LATVIA	6 616 3403	2 gadi 2 years	Groupe SEB Polska Sp. z o.o. Gdański Business Center II D ul. Inflancka 4C 00-189 Warsaw
لبنان LEBANON	4414727	1 year	www.tefal-me.com
LIETUVA LITHUANIA	5 214 0057	2 metai 2 years	Groupe SEB Polska Sp. z o.o. Gdański Business Center II D ul. Inflancka 4C 00-189 Warsaw
LUXEMBOURG	0032 70 23 31 59	2 ans 2 years	GROUPE SEB BELGIUM SA NV 25 avenue de l'Espérance - ZI 6220 Fleurus
МАКЕДОНИЈА MACEDONIA	(02) 20 50 319	2 години 2 years	Грун Себ България ЕООД бул. България 58 С, ет 9, офис 30 1680 София



<b>MALAYSIA</b>	603 7802 3000	2 years	GRUPE SEB MALAYSIA SDN. BHD Unit No. 402-403, Level 4, Uptown 2, No. 2, Jalan SS21/37, Damansara Uptown, 47400, Petaling Jaya, Selangor D.E. Malaysia
<b>MEXICO</b>	(01800) 112 8325	1 año 1 year	Groupe SEB México, S.A. DE C.V. Calle Goldsmith 38-401, Polanco Ciudad de México C.P. 11560, México
<b>MOLDOVA</b>	22 929249	2 роки 2 years	ТОВ «Груп СЕБ Україна» 02121, Харківське шосе, 201-203, 3 поверх, Київ, Україна
<b>NETERLAND The Netherlands</b>	0318 58 24 24	2 jaar 2 years	GRUPE SEB NEDERLAND B.V. De Schutterij 27 3905 PK Veenendaal
<b>NEW ZEALAND</b>	0800 700 711	1 year	GRUPE SEB NEW ZEALAND PO Box 17 – 298, Greenlane, 1546 Auckland New Zealand
<b>NORGE NORWAY</b>	22 96 39 30	2 år 2 years	GRUPE SEB NORWAY AS Lilleakerveien 6d, plan 5 0283, Oslo
عمان سلطنة <b>OMAN</b>	24703471	1 year	www.tefal-me.com
<b>POLSKA POLAND</b>	801 300 420 koszt jak za połączenie lokalne	2 lata 2 years	Groupe SEB Polska Sp. z o.o. Gdański Business Center II D ul. Inflancka 4C 00-189 Warsaw
<b>PORTUGAL</b>	808 284 735	2 anos 2 years	GRUPE SEB IBÉRICA SA Urb. da Matinha Rua Projectada à Rua 3 Bloco1 - 3º B/D 1950 - 327 Lisboa
قطر <b>QATAR</b>	44485555	1 year	www.tefal-me.com
<b>REPUBLIC OF IRELAND</b>	01 677 4003	2 years	GRUPE SEB IRELAND Unit B3 Aerodrome Business Park, College Road, Rathcoole, Co. Dublin
<b>ROMANIA</b>	0 21 316 87 84	2 ani 2 years	GRUPE SEB ROMÂNIA Str. Ermiil Pangratti nr. 13 011881 București
<b>РОССИЯ RUSSIA</b>	495 213 32 30	2 года 2 years	ЗАО «Группа СЕБ-Востоку», 125171, Москва, Ленинградское шоссе, д. 16А, стр. 3
السعودية العربية المملكة <b>SAUDI ARABIA</b>	920023701	2 years	www.tefal-me.com
<b>SRBIJA SERBIA</b>	060 0 732 000	2 godine 2 years	SEB Développement Đorđa Stanojevića 11b 11070 Novi Beograd
<b>SINGAPORE</b>	6550 8900	2 years	GRUPE SEB (Singapore) Pte. Ltd. 3A International Business Park #12-04/05, ICON@IBP Singapore 609935
<b>SLOVENSKO SLOVAKIA</b>	232 199 930	2 roky 2 years	GRUPE SEB Slovensko, spol. s r.o. Cesta na Senec 2/A 821 04 Bratislava
<b>SLOVENIJA SLOVENIA</b>	02 234 94 90	2 leti 2 years	GRUPE SEB Slovensko, spol. s r.o. Cesta na Senec 2/A 821 04 Bratislava
<b>SOUTH AFRICA</b>	www.tefal.co.za	1 year	www.tefal.co.za





8020000683