

# ZINC

## BIG WHEELED SCOOTER

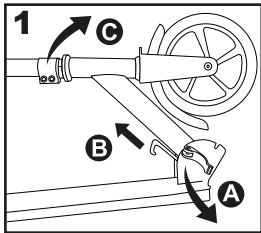
# TRACE

6+

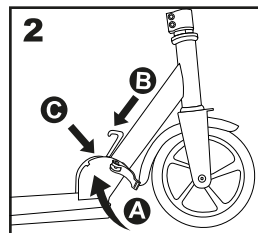
Included:  
- Allen Key



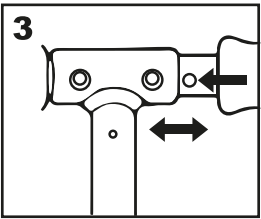
### ADJUSTING & FOLDING THE SCOOTER



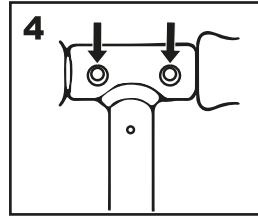
1. Open the clamp 'A', pull on the plastic lever 'B', and pull the handlebar to the upright position 'C' until it clicks into place.



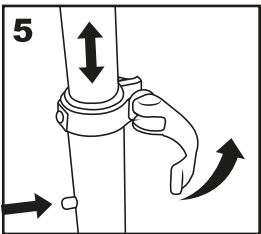
2. Release lever 'B', and close clamp 'A'. Hand tighten the bolt 'C' on the opposite side of clamp 'A' so the clamp holds fast. To fold away, reverse the process.



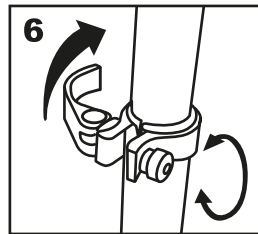
3. While pressing the spring buttons, insert and secure or remove the left and right handlebar grip.



4. Make sure that the spring buttons on both handgrips click into the holes on the handlebar



5. To adjust the height of the handle bar, unlatch the extension pole by pulling the quick clamp lever open and pressing the spring button. Position the handlebar in the correct position and secure it by pushing the quick clamp lever inward.



6. The degree of tension of the quick-release lever can be adjusted by tightening or loosening the screw. Be careful not to over-tighten, so that you can always open and close the clamp by hand. When you release the quick-release lever, the handlebar should move freely (after pressing the spring button).

### TO RIDE Ensure the rider understands how to ride the scooter.

1. Grip the handle bars with your hands, place one foot on the board and the other foot on the ground.
2. Pay attention to your surroundings and make sure that your riding area is clear.
3. Kick backwards with your foot beside the scooter to give you motion.
4. Repeat this kicking action in order to stay in motion.
5. To stop or slow down, place your kicking foot on the brake pedal above the rear wheel or put your kicking foot on the ground.
6. Do not over-steer as this could cause you to fall off from the scooter.

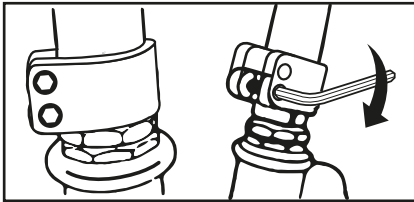
### IMPORTANT SAFETY INFORMATION Ensure the rider understands the safety information.

- This product is recommended for users aged 6+ years.
- The maximum weight for use of this product is 100kg.
- Adult supervision is recommended.
- The scooter must only be used by one rider at a time.
- This product is not a road vehicle and should be used for leisure purposes only.
- Do not use this product at night, in poor weather (rain, snow or visibility) or around heavily populated areas (pavements, streets, muddy areas, rocky surfaces and slippery surface). We recommend that you use this product in a park or other open space.
- Remember to wear a helmet, knee pads, wrist pads, elbow pads and protective clothing.
- Always wear shoes when riding the scooter.
- Do not take this product apart.

- An adult must assist children with initial adjustment procedures and help with unfolding, adjusting handlebars, height of handlebars and to fold scooter
- Do not use this product for jumping, stunts or tricks. The scooter is not designed for such use.
- Brake will get hot from continuous use. Do not touch after braking.
- Avoid excessive speed associated with downhill rides.
- Watch out for pedestrians.
- Replace worn or broken parts immediately.
- When using the scooter, please obey all traffic and pedestrian regulations and gives right of way to pedestrians and refer to the Highway Code regarding rules for cyclists.
- Please check the steering system is correctly adjusted and that all connection components are firmly secured and not broken before every play.
- Check the limitation of use according to regulations of road safety.
- This product is not recommended for indoor use. Outdoor use only.

## MAINTENANCE

1. Always make sure all screws and nuts are securely tightened before every use. The self-lock fixtures may lose their effectiveness.
2. To clean, please wipe the product with mild detergent.
3. Do not leave the scooter outdoors, in high temperatures, intense sunlight or dusty areas. Store in a dry place.
4. No modification to the manufacturer's instructions shall be made.
5. Always check the wheels and bearing and make sure they are tightened.



### MAINTENANCE (by an adult)

Using a 5mm Allen key, regularly make sure that the ring clamp at the base of the handlebar is securely tightened, should it become loose through general use.

## WARNING

The scooter is not designed to be dropped when not in use. If the scooter is dropped after use, over a period of time you will damage the plastic end piece and the steel tubing. If you damage this part of the scooter, it is strongly advised that you replace the damaged parts as soon as possible to avoid any accident caused by making contact with the these parts. The scooter should not be used on any other surface other than on flat even ground. It is not designed for gravelled roads, on grass surfaces or any other uneven surfaces as this could cause not only damage to scooter but also the rider. Protective equipment should be worn. Not to be used in traffic. 100kg max. The scooter shall be used with caution, since it requires great skill, so as to avoid falls or collisions causing injury to the user and the third parties.

## CUSTOMER HELPLINE

Hy-Pro advise you to contact us directly and not to return this item to the place of purchase. Hy-Pro has taken great care to ensure this item has reached you in good condition, should you have a query please ring our helpline +44 (0) 800 731 0006 where your call will be dealt with promptly. Alternatively please contact us on email: [customerservices@zinchq.com](mailto:customerservices@zinchq.com)



**HY-PRO**<sup>®</sup>  
LU5 5BN, UK

\*PLEASE RETAIN FOR FUTURE REFERENCE

\*COLOUR & CONTENTS MAY VARY FROM THOSE SHOWN ON PACKAGING

READ THE INFORMATION SUPPLIED BY THE MANUFACTURER

COMPLIES WITH BS EN14619:2019 / EN14619:2019.

MAXIMUM WEIGHT: 100 KG FOR CLASS A.

Hy-Pro House, Centrus Park  
Arenson Way, Dunstable,  
Bedfordshire LU5 5BN.  
United Kingdom

Hy-Pro Asia  
Room 1011, 10/F, Peninsula Centre,  
67 Mody Road, Kowloon, Hong Kong.

Hy-Pro Europe  
Cube Building, Monahan Road,  
Cork, T12H1XY, Republic Of Ireland.

Customer Care Line  
Tel: +44 (0) 800 731 0006  
[www.hy-pro.co.uk](http://www.hy-pro.co.uk)  
[www.zincsports.com](http://www.zincsports.com)

