



WI1.5

WATCH INSTRUCTIONS

For more information, or to view the Rotary watches collections please visit www.rotarywatches.com
service@rotarywatches.com

V.5 26/07/17

Rotary was originally established in 1895 in Switzerland's, La Chaux de Fonds region; very much the cradle of modern watchmaking. It was here that Rotary would develop the key values which have endured today. Now based in London, meticulous design, superb build quality and exceptional value for money are still key.



1

Setting the Date and Time

If your watch has a Screw Down Crown, please follow the instructions in **Section A**. If not, please follow the instructions in **Section B**.

Please note:

Pulling the crown forcefully in an outward direction could result in serious damage to the watch. Make sure that you always unscrew the crown before adjusting the date or time.

Models fitted with a double seal crown function as detailed on Page 6.

2

To change the time and/or date of a Screw Down crown model:

Always make sure that the crown on your watch is screwed down before exposing to water. A hard knock might cause a watch to lose its Water Resistant benefit without you realising it. The case back of a Water Resistant watch must be opened and closed by a skilled watchmaker. When due a battery change, we recommend you return your watch to Rotary for resealing.

Continued on page 4

3

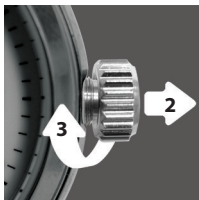
Screw Down Crown models:

(Continued from page 3)



Unscrew the crown to release it from the case in a downward/anti clockwise direction (1).

To set the date: Once the screw is released, pull the crown outward gently until it clicks once (2) and rotate the crown in a clockwise direction to change the date (3). (Only applicable for date watches).

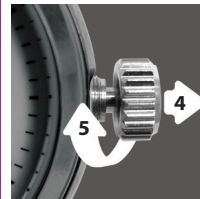


Continued on page 5

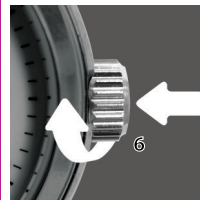
4

Screw Down Crown Models:

(Continued from page 4)



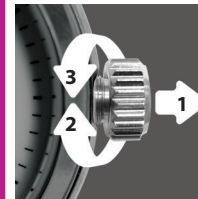
To set the time: Pull the crown once more in an outward direction gently until it clicks (4) and rotate the crown in a clockwise direction to change the time (5).



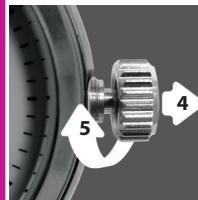
To close the crown: push the crown inward whilst at the same time rotating the crown in a clockwise direction (6). It is very important to check that the crown is fully screwed into a closed position in order to ensure the water resistance benefit is maintained.

5

Standard Crown Models:



Setting the day and date: Pull out the crown one notch (1), rotate clockwise to change day (2) and anti clockwise to change date (3).



Setting the time: Pull out the crown a second notch (4) and rotate the hands until the correct time is shown (5). Remember to push the crown fully home.

6

Bracelet Watches

Direct contact with sprays such as hairsprays, perfumes or detergents may cause damage to your watch.

Precious Metal Watches

All precious metal products should be cared for with a polishing cloth and stored in the presentation box when not being worn. Please note that Rotary precious metal watches are not water resistant.

7

'Conflict' or 'blood' diamonds

The diamonds used in Rotary watches have been purchased from legitimate sources and are 'conflict free'.

'No Dirty Gold Campaign'

We confirm our understanding and our compliance to the 'No Dirty Gold Campaign'.

No Mercury in Batteries

We confirm that the batteries in our watches do not contain mercury.

8

Leather Straps

Leather straps deteriorate at different rates depending on climatic conditions, sweat acidity and levels of wear and tear. To ensure your leather strap lasts as long as possible take the following precautions:

- 1) Avoid prolonged exposure to sunlight.
- 2) Avoid direct contact with solvents, detergents and perfumes.

9

Automatic Watches

The self-winding device for automatic watches keeps the watch wound while it is being worn. Off the wrist, it will continue to function for between 24 to 48 hours. To restart the watch after this time, change the time manually and wind 15/20 times, it will then continue to function as it is worn. Alternatively, place the watch in an automatic winding box when not worn.

10

Mechanical Watches

Your mechanical watch will never need a battery. For proper time keeping, manually turn the crown clockwise at its original position until it feels tight. The watch is able to run for 36-48 hours once fully wound, but we recommend the watch is wound daily to maintain the power reserve.

(Continued on page 12)

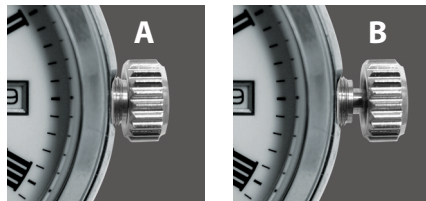
11

Mechanical Watches

(Continued from page 11)

1) For date setting, pull the crown to position **(A)** and turn it in an anti-clockwise direction to set the calendar.

2) For time setting, pull the crown to position **(B)** and turn it clockwise to set the time. The crown must be pushed back to its original position or it will not keep correct time.



12

Quartz Watches

All quartz watches are powered by batteries so it is not necessary to wind them. If your quartz watch stops, have the battery checked as soon as possible. A 'dead' battery may cause serious damage to the movement if left inside the watch for too long. Quartz analogue watches contain both electronic and mechanical parts which require periodic servicing.

13

Nickel Compliancy

All Rotary watches conform to the EEC directive on Nickel content. They comply with the procedural tests EN1810, EN1811 and EN12472 that form part of the directive, to ensure the release rate is no greater than 0.5ug/cm²/week on products in direct and prolonged contact with the skin.

14

ROTARY


www.rotarywatches.com
service@rotarywatches.com

15