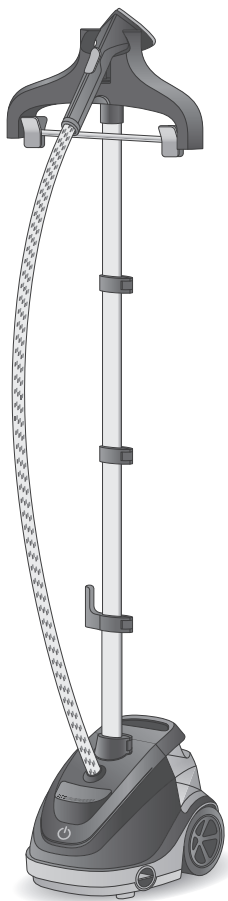
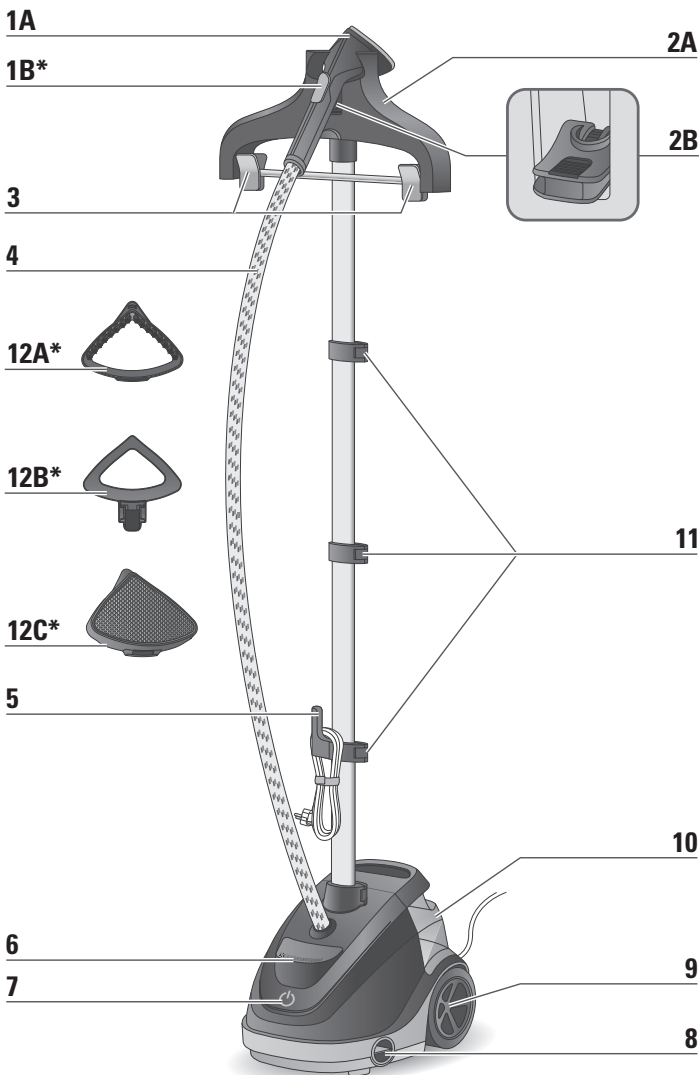


EN



IT65XX

www.tefal.com
www.t-fal.com



*Depending on model

PRODUCT DESCRIPTION

- | | | | |
|-------------|------------------------------------|--------------|-------------------|
| 1A. | Steam Head | 7. | On/Off Indicator |
| 1B*. | Precision Shot Button | 8. | Draining Cap |
| 2A. | Hanger | 9. | Wheels |
| 2B. | Lock system for hanger rotation | 10. | Water tank |
| 3. | Trouser Clips | 11. | Pole Locks |
| 4. | Woven fabric steam hose | 12A*. | Fabric Brush |
| 5. | Power Cord Hook | 12B*. | Crease attachment |
| 6. | On/Off Pedal | 12C*. | Steam cover |

*Depending on model

IMPORTANT SAFETY INSTRUCTIONS

- When using your appliance, basic precautions should always be followed, including the following:
- Read all instructions before using this product.
- This product has been designed for indoor, domestic use only. Any commercial use, inappropriate use or failure to comply with the instructions, the manufacturer accepts no responsibility and the guarantee will not apply.

- Always plug your appliance:

- into a mains circuit with voltage between 220 V and 240 V.

- into an earthed electrical socket.

Connecting to the wrong voltage may cause irreparable damage to the appliance and will invalidate your guarantee.

If using a mains extension lead, ensure that it is correctly rated (16A) with an earth, and is fully extended.

- Completely unwind the power cord before plugging into an earthed socket.
- Use appliance for its intended use only.
- To reduce the risk of contact with hot water emitting from steam vents, check appliance before each use by holding it away from body and operating steam button.
- This appliance can be used by children aged from 8 years

and above and persons with reduced physical, sensory or mental capabilities or lack of experience and knowledge if they have been given supervision or instruction concerning use of the appliance in a safe way and understand the hazards involved. Children shall not play with the appliance. Cleaning and user maintenance shall not be made by children without supervision.

- Never pull on the cord to disconnect the appliance from electrical outlet; instead, grasp plug and pull to disconnect on the plug to disconnect the appliance.
- Do not allow cord to touch hot surfaces or come into contact with rough or sharp edges. Let the appliance cool completely down before putting away. Loop cord loosely around appliance when storing.
- Always disconnect appliance from the electrical supply when filling with water or emptying when cleaning, when removing or refitting accessories and when not in use.
- Care should be taken when using the appliance due to the emission of steam.
- Do not operate appliance with a damaged cord or if appliance has been dropped or damaged. To avoid the risk of electric shock, do not disassemble or attempt to repair the appliance. Take it to the nearest approved service centre for examination and repair. Incorrect reassembly or repair could cause a risk of fire, electrical shock or injury to persons when the appliance is used.

- Close supervision is necessary for any appliance being used by or near children.
- Never leave the appliance unattended when it is connected to the mains. Before storing the appliance, once it is unplugged, please wait until it has cooled down (around 1 hour).
- Burns could occur from touching hot metal or plastic parts, hot water or steam. Use care when you empty a steam appliance. There may be hot water in the reservoir.
- If an extension cord is absolutely necessary, a cord with a 16A ampere rating shall be used. A cord rated for less amperage can result in a risk of fire or electric shock due to overheating. Care shall be taken to arrange the cord so that it cannot be pulled or be tripped over.
- To protect against a risk of electric shock, do not immerse the appliance in water or other liquids.
- Do not direct steam at people, animals or clothes while they are being worn.
- This appliance is not intended for use by persons (including children) with reduced physical, sensory or mental capabilities, or lack of experience and knowledge, unless they have been given supervision or instruction concerning use of the appliance by a person responsible for their safety. Children should be supervised to ensure that they do not play with the appliance.
- The use of accessory attachments other than those provided by the manufacturer is not recommended and

- may result in fire, electric shock or personal injury.
- The appliance must be rested on a stable surface. When placing the appliance on its base, ensure that the surface on which the base is placed is stable.
 - The appliance must not be used if it has been dropped, if there are visible signs of damage or if it is leaking.
 - Check the electrical power cord for sign and wear or damage prior to use. If the electrical power cord is damaged, it must be replaced at an approved service centre to avoid any danger.
 - Do not use other descaling products than the one cited in the IFU.
 - For filling, cleaning and descaling your appliance, please refer to the following Instructions for use.

Before first use

- When you first use the appliance, some smoke or a harmless odour may be produced or there may be a small discharge of particles. This will not affect the use of the appliance and will disappear quickly.

What water to use?

- Your appliance has been designed to use untreated tap water. If your water is very hard, mix 50 % untreated tap water and 50 % bottled demineralised water. Never use water containing additives (starch, perfume, aromatic substances, softeners, etc.), or condensation water (for example water from tumble dryers, water from refrigerators, water from air conditioning units, filtered or bottled water.). This water contains organic waste materials or minerals that concentrate under the effect of heat and cause spitting, brown colouring or premature ageing of your appliance.

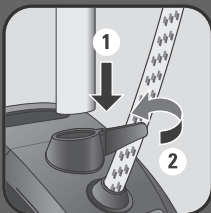
SAVE THESE INSTRUCTIONS

1. ASSEMBLY

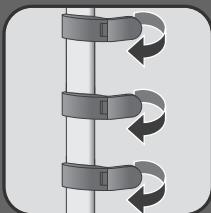


Tips for better results with your garment steamer

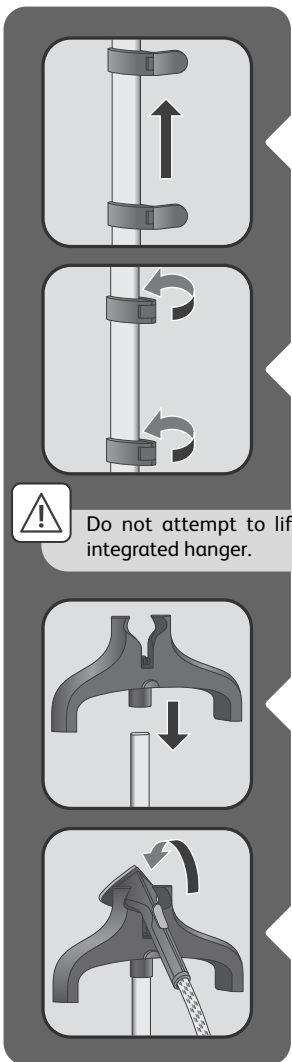
- We recommend checking the garment care label for manufacturer recommendations before steaming. We also recommend testing the garment and effect on the garment on an unobtrusive area such as an inner seam.
- Button up the shirt's collar to prevent them slipping on the hanger during steaming.
- Gently press steamer brush into fabric while making slow passes.
- Avoid direct contact between the steam head and silk or velvet.
- Some garments are smoothed more easily on the reverse side.
- Heavy fabrics may need to be steamed for longer.
- If you have to use the steam head near the floor, raise the hose frequently to a vertical position in order to avoid condensation. A gurgling noise may be heard if the flexible hose is pinched.
- If no steam is produced, if a gurgling sound is heard or if water is dripping through the holes of the steam head, raise the steam hose occasionally to remove condensation inside the hose.



Insert the pole in the housing & then lock.



Open the three pole locks.



Extend the pole fully.

Close the three locks.

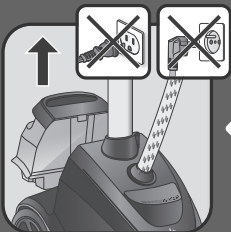


Do not attempt to lift up or transport the appliance holding the integrated hanger.

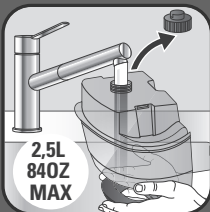
Fully insert the hanger vertically on top of the pole.

Position the steam head on its cradle.

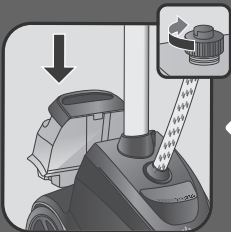
2. BEFORE USE



Remove the water tank.



Unscrew the cap then fill the water tank with untreated tap water.



Fully tighten the water tank cap and insert tank back in appliance.

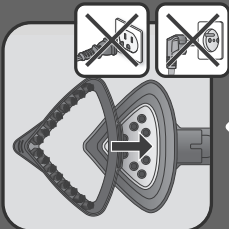


Add the garment of your choice on the hanger.

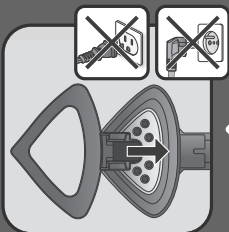
3. ACCESSORIES



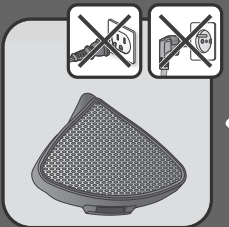
Accessories must be fitted when appliance is cold and not switched on.
Warning: Never touch the steam head until it has cooled down completely.



The fabric brush opens the weaves of the fabrics for better steam penetration.
Attach the fabric brush to the steam head when appliance is unplugged.



The crease attachment allows you to press a crease either on your trousers or jackets. Attach the crease attachment to the steam head when appliance is unplugged.



The steam cover filters water impurities and protects fabrics from water drips. Attach steam cover to the steam head when appliance is unplugged.

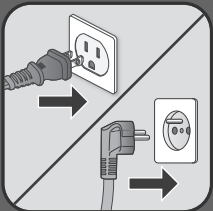


Position the steam head on its cradle.

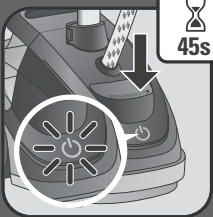
4. USE



The appliance must be used on a flat, dry, heat and water resistant flooring. The appliance must not be used on very thick carpets or rugs.



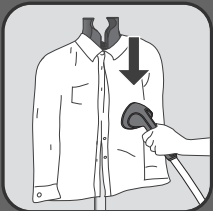
Plug in the appliance.



Press on the ON/OFF pedal and check that light is switching on. Wait for 45 seconds before steaming.



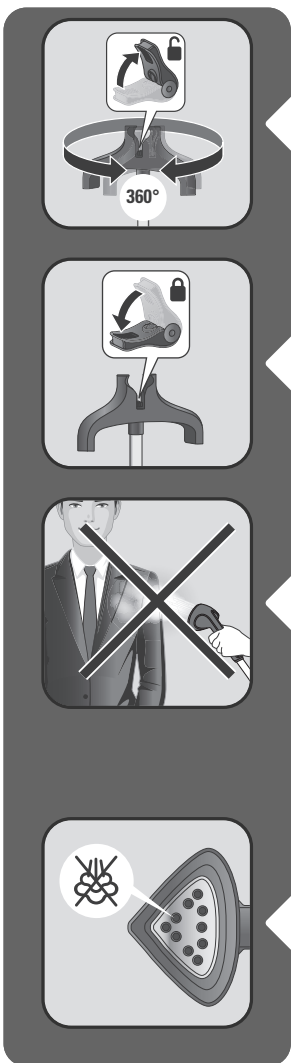
After 45 seconds approximately, steam will appear.



- Grasp the steam head with the steam vents pointing away from you.
- Start steaming by brushing material lightly with the grain of the fabric in an up/down vertical motion.



If you want to have concentrated steam, press on the Precision shot button.



To release the hanger, unlock the lock system by pulling it up.

Lock the hanger by pushing down the lock system.

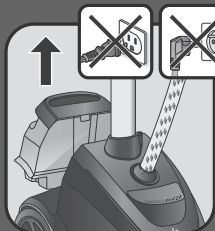
Warning: Never steam a garment while it is being worn.

5. DURING USE

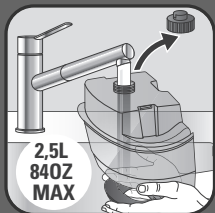
If no steam is produced, if a gurgling sound is heard or if water is dripping through the holes of the steam head, raise the steam hose occasionally to remove condensation inside the hose and check the water level in the tank.



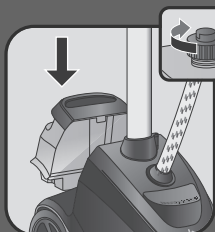
Press the On/Off Pedal and check that the light has turned off.



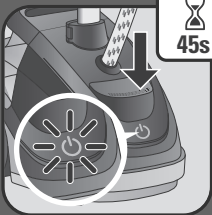
Remove the water tank.



Unscrew the cap then fill the water tank with untreated tap water.



Fully tighten the water tank cap and insert the water tank back into the appliance.

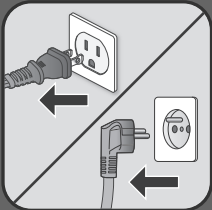


Press the ON/OFF pedal and check that the light is on. Wait for 45 seconds before steaming.

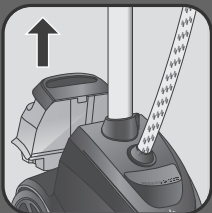
6. AFTER USE



Press the On/Off Pedal and check that light has turned off.



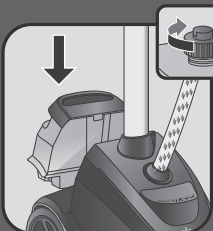
Unplug the appliance.



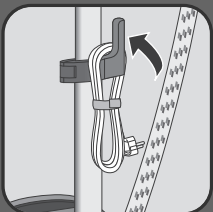
Remove the water tank.



Unscrew the cap and then empty the water tank completely in a sink.



Screw back the cap and place the water tank back in the appliance.



Roll up the power cord and place it on its hook.



Wait for an hour for your appliance to completely cool down before storing.

7. DESCALING PROCEDURE

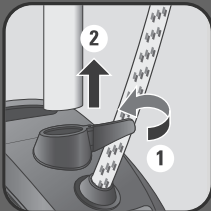


This process should be made every 6 months or as soon as you feel that the performance of the appliance (steam output) is decreasing.

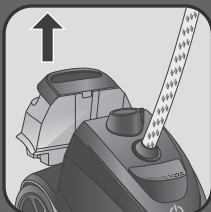


1h

WARNING! Wait for an hour or so until the appliance completely cools down.



Remove the steam head from the hanger and unlock the locker and pull up to remove the pole.



Remove the water tank.



Never fill inside the pole connection.



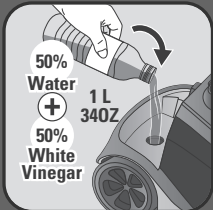
Pour 500 ml of water into the appliance tank inlet.



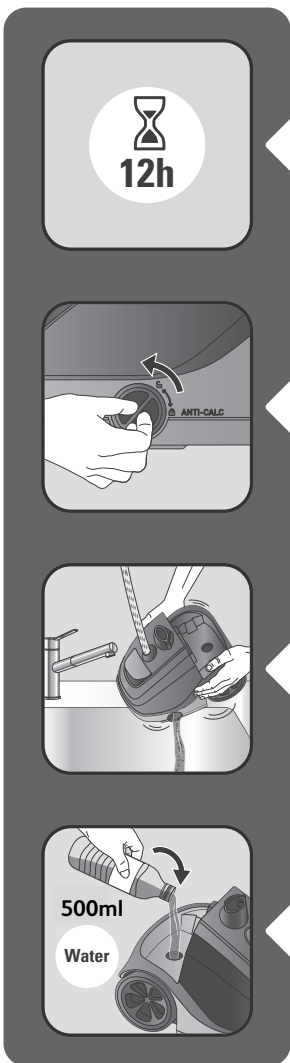
Gently shake the appliance.



Vertically tilt the appliance to empty water into the sink.



Prepare a 1L mix of 500ml of water and 500ml of white vinegar only. Pour the mix into the appliance tank inlet.



Wait for 12 hours minimum for best results.

Place the appliance over the sink and unscrew the "Anti calc" cap by turning it anti clockwise.

Vertically tilt the appliance to empty the liquid into the sink.

Pour in 500ml of water into the appliance tank inlet.



Vertically tilt the appliance to empty the water into the sink.



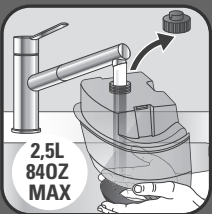
Replace the anti-calc cap by screwing it in completely to ensure that it is watertight but do not overtighten it.



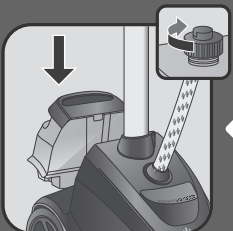
Insert the pole back into the housing and lock it into place.



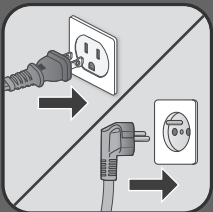
Position the steam head on its cradle.



Unscrew the cap then fill the water tank with untreated tap water.



Fully tighten the water tank cap and insert tank back in appliance.



Plug in the appliance.



Allow it to steam until no water is left in the water tank.

8. CLEANING



Wait for an hour or so until the appliance has completely cooled down.



only use a damp sponge or cloth to clean the base.



Only use a damp sponge or cloth to clean the steam head.



Never use detergents when cleaning your appliance.



Never wash or rinse appliance directly over a sink.



Never wash or rinse the steam head directly over a sink.

TROUBLESHOOTING

| Problems | Possible causes | Solutions |
|--|--|--|
| There is no steam. | The appliance has not been turned on. | Check that the appliance has been plugged in correctly. Next press the On/Off pedal, the power indicator light located at the front of the appliance will come on. |
| | The hose has been obstructed. | Check that the steam head is not laying down on the floor. Check that the hose is not bent or twisted. |
| | There is no water left in the water tank. | Switch off the appliance and fill the water tank. |
| | The steam is not ready yet. | The appliance will produce steam about 45 seconds after it has been switched on. |
| The steam flow is low. | Your steamer has a build-up of scale because it has not been rinsed out regularly or descaled. | See descaling process (Cleaning paragraph). |
| | The hose has been obstructed. | Check that the hose is not bent or twisted. |
| | There is no water left in the water tank. | Switch off the appliance and fill the water tank. |
| Water runs through the holes of the steam head. | There is condensation in the hose. | Never use a steamer in the horizontal position. Hold the hose vertically outstretched and wait for the condensed water to return to the steamer. |
| The steamer takes a long time to heat and/or ejects white particles. | Your steamer has a build-up of scale because it has not been descaled regularly. | See descaling process (Cleaning paragraph). |

ENVIRONMENTAL PROTECTION FIRST !



- ① Your appliance contains valuable materials which can be recovered or recycled.
- ➔ Leave it at a local civic waste collection point.

If you have any further problems or queries please contact the Customer Relations Helpline - see details at the end of this leaflet.





