



## 16L WET AND DRY VACUUM

7798401 (Model: MCEWDV1316)

### **Important - Please read these instructions fully before using the product.**

These instructions contain important information that will help you get the best from your product, ensuring it is operated correctly and safely. If you need help or have damaged or missing parts, call the Customer Helpline on **03304 410 459**.

**AFTER SALES SUPPORT**  
**03304 410 459**

# Table Of Contents

<b>Safety Information .....</b>	<b>3</b>
Warning Symbols .....	3
Safety Warnings .....	4
<b>In the Box .....</b>	<b>7</b>
Parts .....	7
<b>Assembly.....</b>	<b>8</b>
Step 1 – Attaching the Handle & Hose Storage Bands .....	8
Step 2 – Attaching the Casters .....	9
Step 3 – Installing the Desired Filter.....	9
Step 4 – Installing the Dust Bag (Dry Use Only) .....	10
Step 5 – Attaching the Power Head.....	10
Step 6 – Attaching the Hose .....	11
Step 7 – Attaching the Accessories .....	11
Step 8 – Removing / Attaching Floor Nozzle Attachments .....	12
<b>Operation .....</b>	<b>13</b>
Dry & Wet Vacuum Operation... ..	13
Blower Operation.....	18
<b>Maintenance.....</b>	<b>19</b>
Emptying the Container .....	19
Storage .....	20
Cleaning Reusable Cloth Filter.....	20
Cleaning Foam Wet Filter .....	21
<b>Technical Data .....</b>	<b>22</b>
Technical Data Table .....	22
Replacement Part List .....	22
Recycling and Disposal .....	22
<b>Troubleshooting .....</b>	<b>23</b>
General Troubleshooting .....	23
<b>Getting Help .....</b>	<b>24</b>
Customer Helpline .....	24
Guarantee.....	24

Produced in China for Argos Limited. London, EC1M 6HA, UK. Argos (N.I.) Ltd, Forestside Shopping Centre, Upper Galwally, Belfast, BT8 6FX, UK.  
[argos.co.uk/help/contact-us](http://argos.co.uk/help/contact-us)



## Safety Information

**Important - Please read these instructions fully before starting assembly**

### Warnings Symbols

The following warning symbols appear throughout this manual and indicate the appropriate safety measures you should take when operating and maintaining the appliance.



Take extra care, beware of hazards.



The product complies with the applicable European directives and an evaluation method of conformity for these directives was followed.



The product confirms to relevant UK regulatory requirements.

**IPX4** Protection against penetration of dust, protection against vertical water drips.



Protection class II.



Electrical appliances must not be disposed of with the domestic waste.



## Safety Information

**Important - Please read these instructions fully before starting assembly**

### **Safety Warnings**

#### **READ AND UNDERSTAND ALL INSTRUCTIONS BEFORE USING THIS VACUUM CLEANER.**

Read and understand this instruction manual and all labels on the Wet/Dry Vacuum cleaner before operating. Safety is a combination of common sense, staying alert and knowing how your vacuum cleaner works. Use this Wet/Dry Vacuum only as described in this manual. To reduce the risk of personal injury or damage to your Wet/Dry Vacuum, use only recommended accessories.

#### **SAVE THIS MANUAL FOR FUTURE REFERENCE.**

**When using an electrical appliance, basic precautions should always be undertaken including the following:**



#### **WARNING: TO REDUCE THE RISK OF FIRE, ELECTRIC SHOCK, OR INJURY:**

- Never leave the appliance switched on unattended, if you leave the work area, switch the appliance off or unplug it from the power supply.
- Do not vacuum or use this Wet and Dry Vacuum cleaner near flammable liquids, gases or explosive vapours like gasoline or other fuels, lighter fluids, cleaners, oil-based paints, natural gas, hydrogen, or explosive dusts like coal dust, magnesium dust, grain dust or gun power. Sparks inside the motor can ignite flammable vapours or dust.
- This vacuum cleaner is not suitable for the vacuuming of asbestos or asbestos dust.
- Do not vacuum anything that is burning or smoking, such as cigarettes, matches, or hot ashes.



## Safety Information

**Important - Please read these instructions fully before starting assembly**

### **Safety Warnings (continued)**

- Keep hands and body parts away from the suction ports on the vacuum cleaner. High powered suction can cause personal injuries.
- Ensure the hose and connections are always pointed away from the user's face, hair, ears and eyes during operation and never direct the nozzle towards persons or animals.
- Clear the working area of any items or possessions that you do not wish to be vacuumed before operation.
- Keep cord away from heated surfaces.
- Do not expose to rain. Store indoors.
- Do not unplug by pulling on the cord. To unplug, grasp the plug, not the cord.
- Do not use with damaged cord, plug or other parts.
- Do not pull or carry by cord, use cord as handle, close a door on cord, or pull cord around sharp edges or corners.
- Do not run vacuum cleaner over cord.
- Do not handle the plug or vacuum cleaner with wet hands.
- To reduce the risk of health hazards from vapours or dusts, do not vacuum toxic materials.
- Frequently check that the float valve positioned underneath the motor is able to move freely.
- Do not use or store near hazardous materials.
- Do not use this vacuum cleaner with a torn filter or without the filter installed.
- Do not allow to be used as a toy. Close attention is necessary when used by or near children.



## Safety Information

**Important - Please read these instructions fully before starting assembly**

### **Safety Warnings (continued)**

**This vacuum cleaner meets the energy efficiency requirements: Power consumption in off mode(<0.3W).**

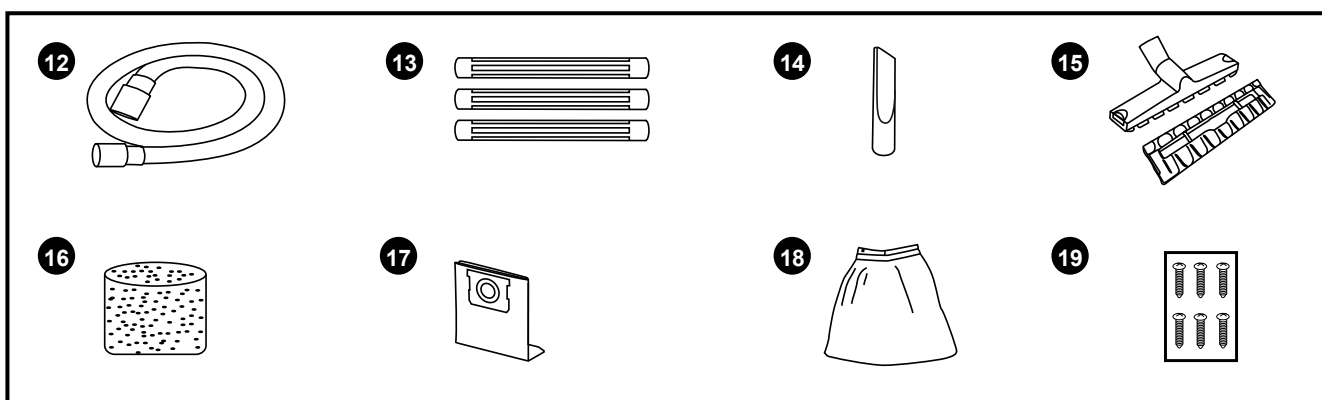
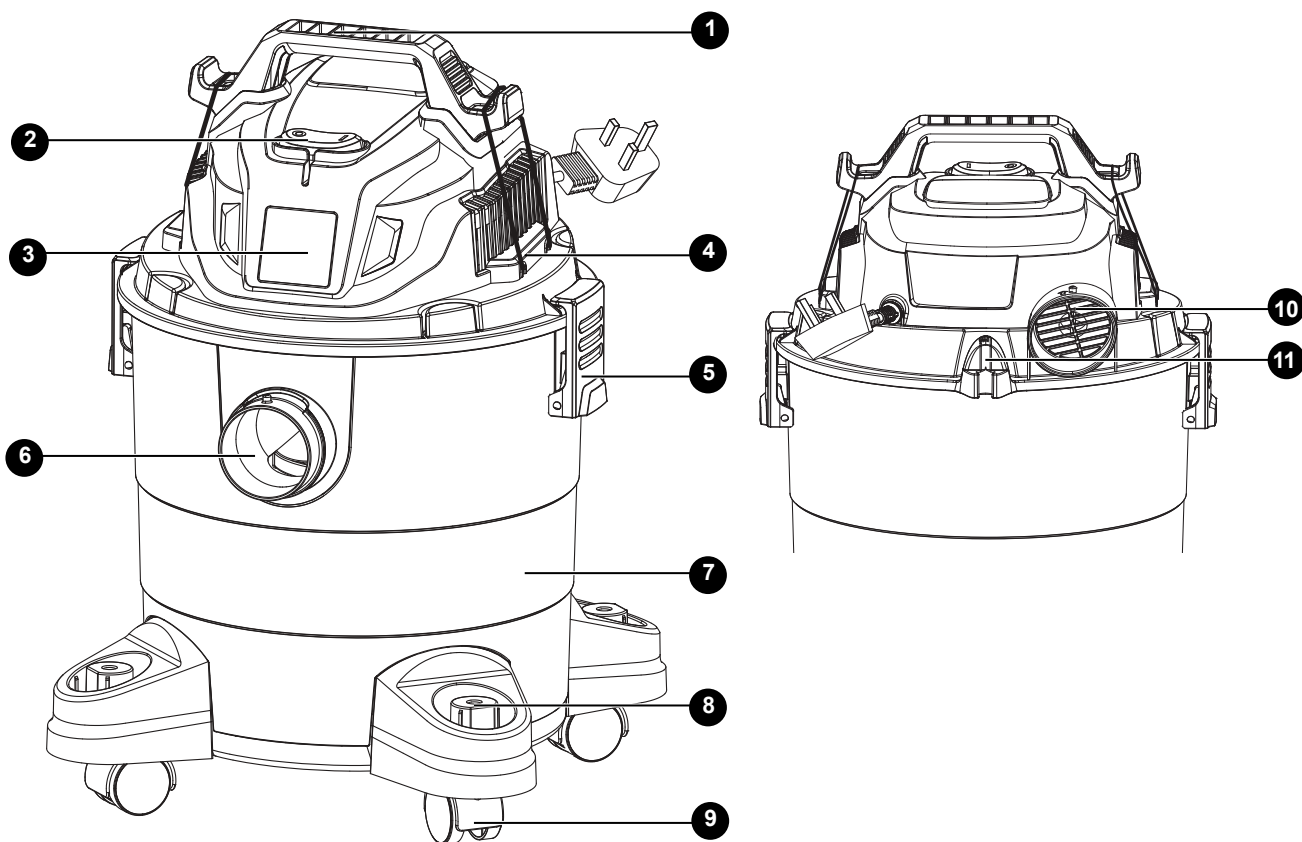
#### **When using as blower:**

- Direct air discharge only at work area.
- Do not use Wet/Dry Vacuum as a sprayer.
- Do not direct air at bystanders.
- Keep children away when blowing.
- Wear safety goggles.

# In the Box

## Parts

- |                                 |                                    |                                       |   |
|---------------------------------|------------------------------------|---------------------------------------|---|
| <b>1</b> Handle                 | <b>7</b> Container                 | <b>13</b> Extension Wand (x3)         | <b>18</b> Reusable Cloth Filter (pre-installed, dry use only) |
| <b>2</b> On/Off Switch          | <b>8</b> Accessory Storage         | <b>14</b> Crevice Tool                | <b>19</b> Screw (x6)  |
| <b>3</b> Power Head             | <b>9</b> Caster                    | <b>15</b> Floor Nozzle                |   |
| <b>4</b> Hose Storage Band (x2) | <b>10</b> Blowing Port             | <b>16</b> Foam Filter (wet use only)  |   |
| <b>5</b> Latch (x2)             | <b>11</b> Power Cable Storage Hook | <b>17</b> Dust Bag (x5, dry use only) |   |
| <b>6</b> Vacuum Port            | <b>12</b> Hose                     |                                       |   |



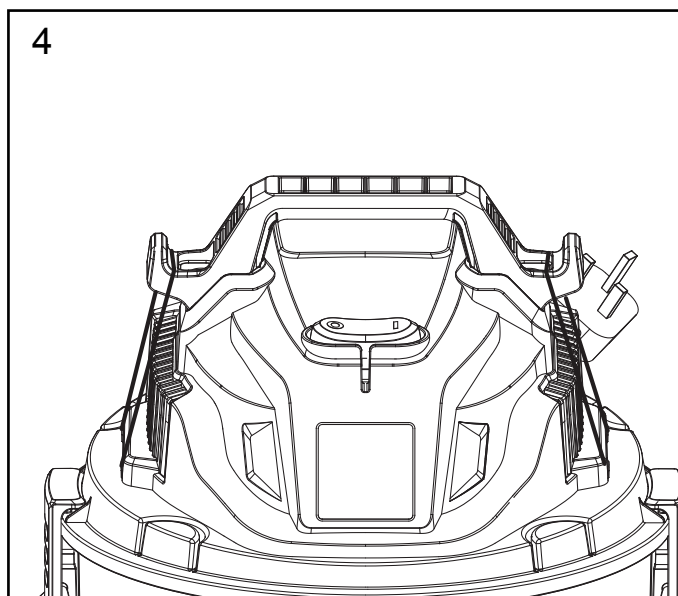
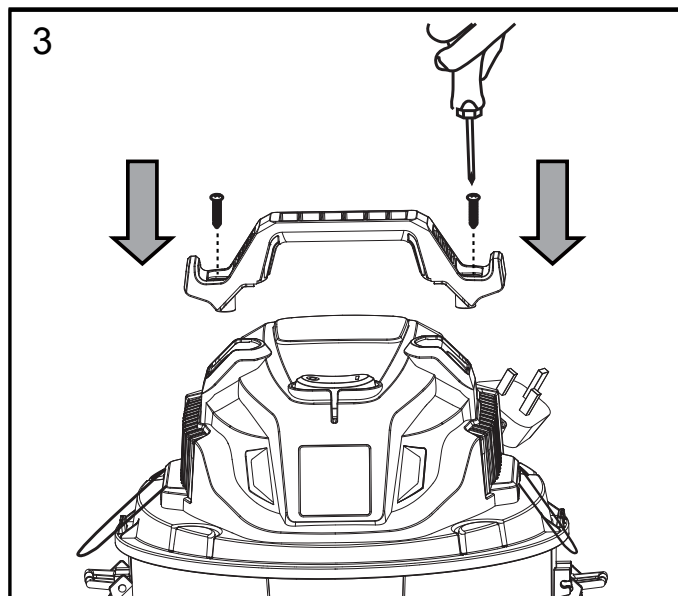
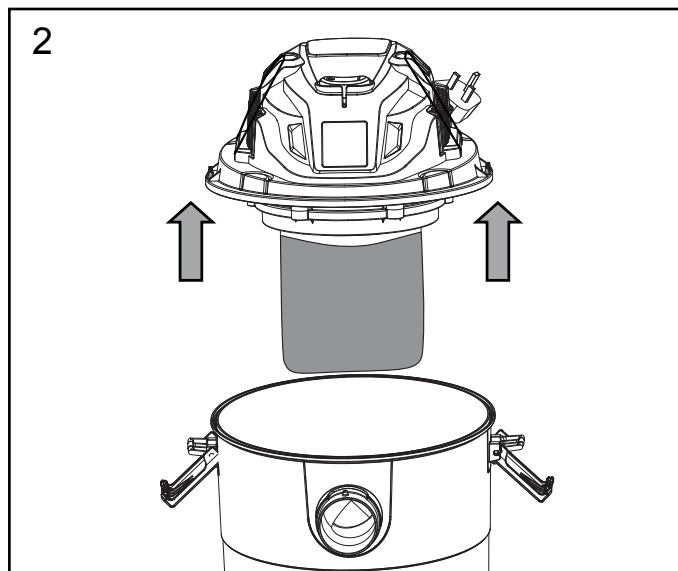
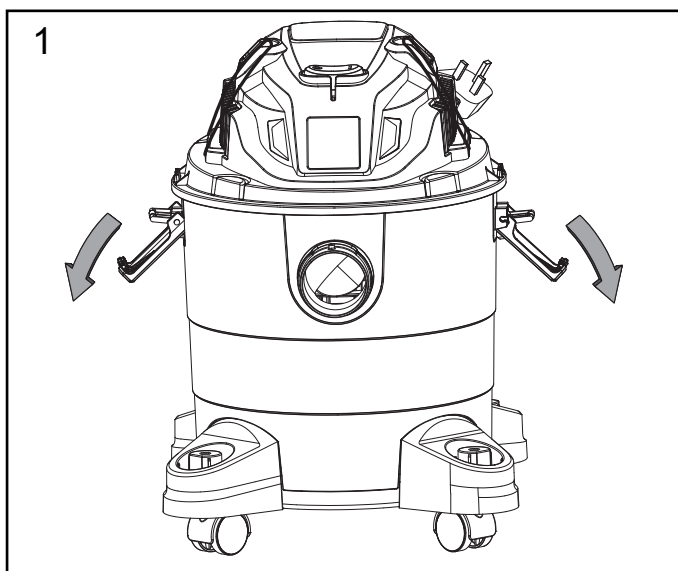


# Assembly

## Step 1 - Attaching the Handle & Hose Storage Bands

A Phillips head screwdriver is required. 

- Un-clip the latches (Fig. 1).
- Lift the power head from the container (Fig. 2). Remove the contents from inside the container. Make sure you have all the contents that are listed on page 7 .
- Release the hose storage bands from the slots located on the top of the power head. Insert the carry handle into the slots, and secure with the screws provided (Fig. 3). Do not over-tighten the screws.
- Pull the hose storage bands upwards on each side and hook them onto the handle (Fig. 4).

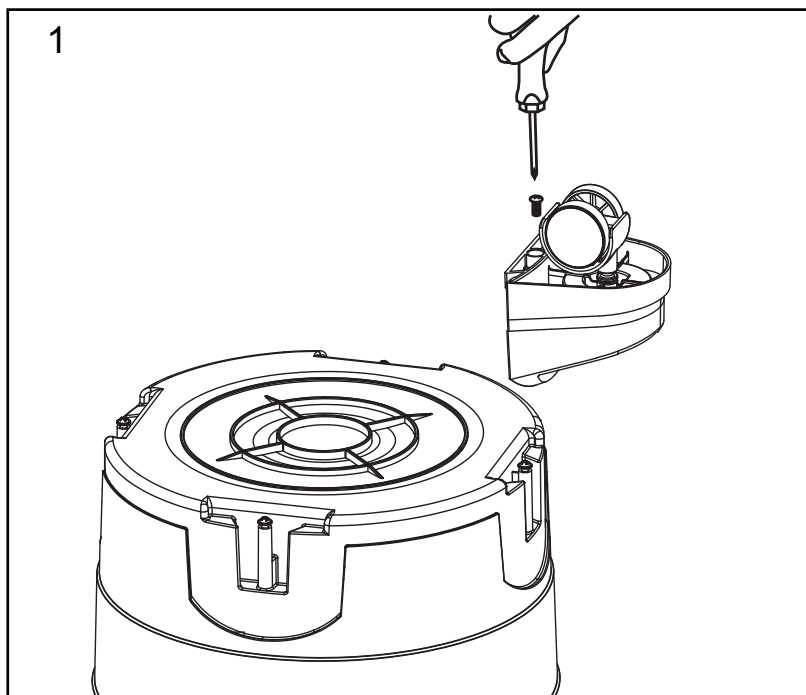




# Assembly

## Step 2 - Attaching the Casters

- With the power head removed, turn the container upside down. Insert the casters into the slots and apply pressure until they click into place, and secure them with supplied screws (Fig. 1). Do not over-tighten the screws.



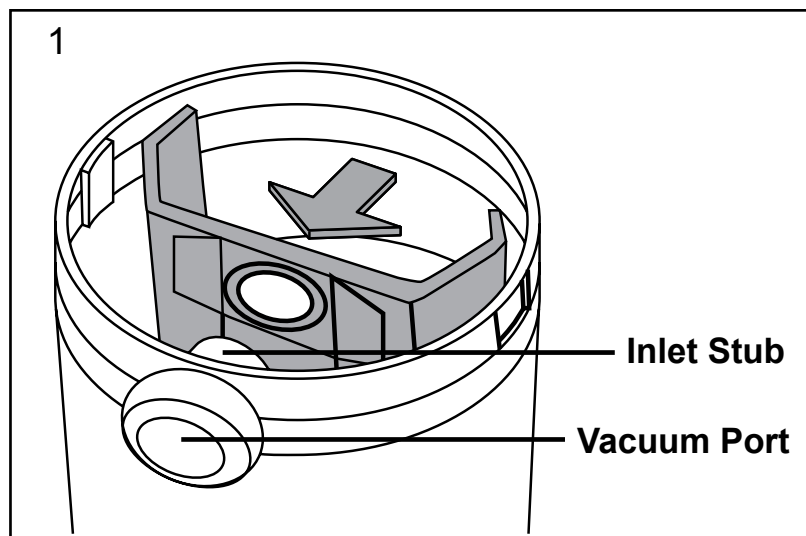
## Step 3 - Installing the Desired Filter

- Your vacuum cleaner comes ready for dry vacuum cleaning with the cloth filter pre-installed. If the cloth filter is not installed, refer to page 15 for filter installation instructions.
- For wet vacuuming, replace the cloth filter with the foam filter supplied. Do not use a dust bag when wet vacuuming. If foam filter is not installed, refer to page 16-17 for filter installation instructions.

# Assembly

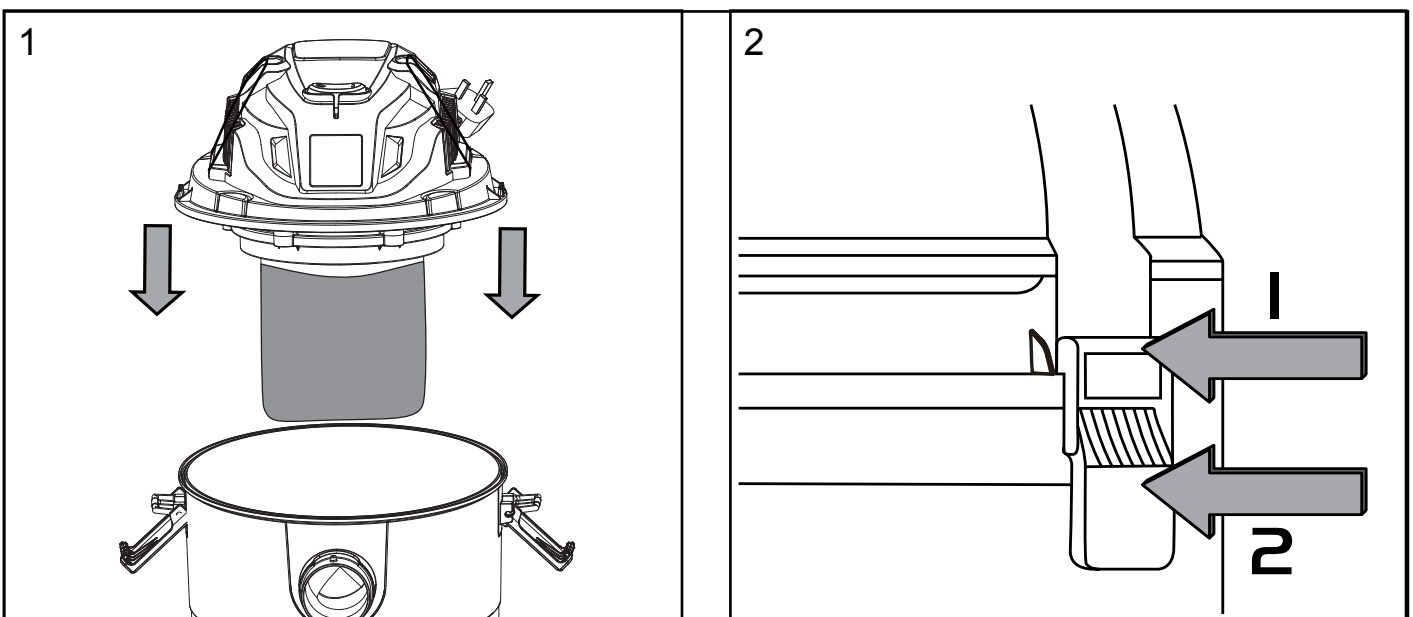
## Step 4 - Installing the Dust Bag (Dry Use Only)

- Your vacuum cleaner can be used with or without dust bags. To extend the life of your filter and maintain optimal performance, we strongly recommend using a dust bag.
- Dust bags help to capture fine dust particles, reducing the load on the filter and ensuring your vacuum cleaner operates efficiently for a longer period.
- Ensure that the dust bag is properly installed before use by fully fitting the dust bag flange onto the inlet stub, taking care not to damage the bag (Fig. 1).



## Step 5 - Attaching the Power Head

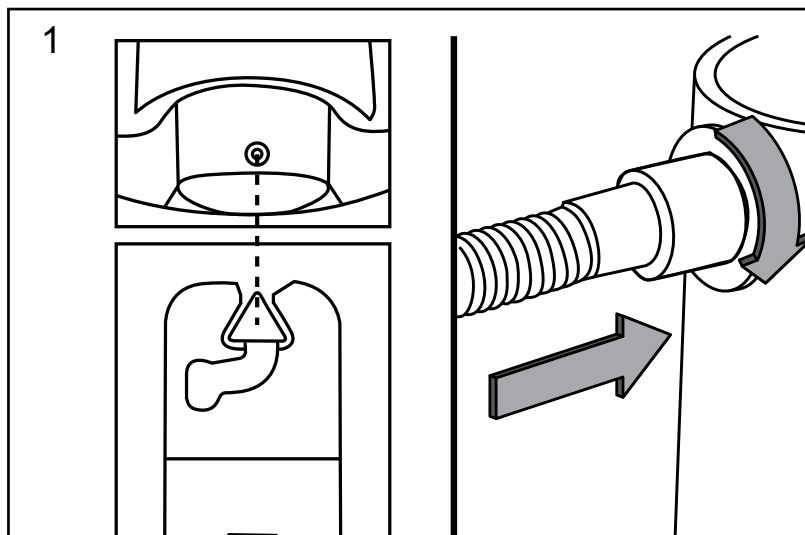
- Place the power head back on the container, and secure into place using the 2 side latches (Figs. 1 & 2).



# Assembly

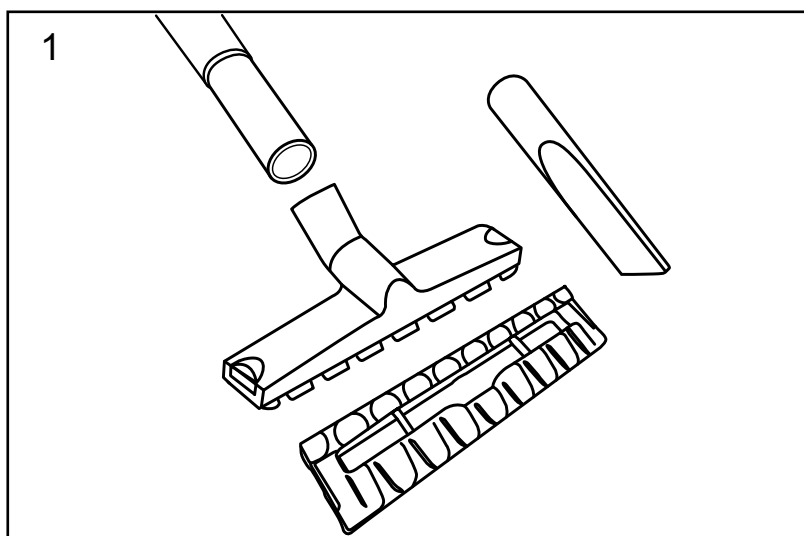
## Step 6 - Attaching the Hose

- Insert the locking end of the hose into the vacuum port of the container. Rotate clockwise to securely lock into place (Fig. 1).



## Step 7 - Attaching the Accessories

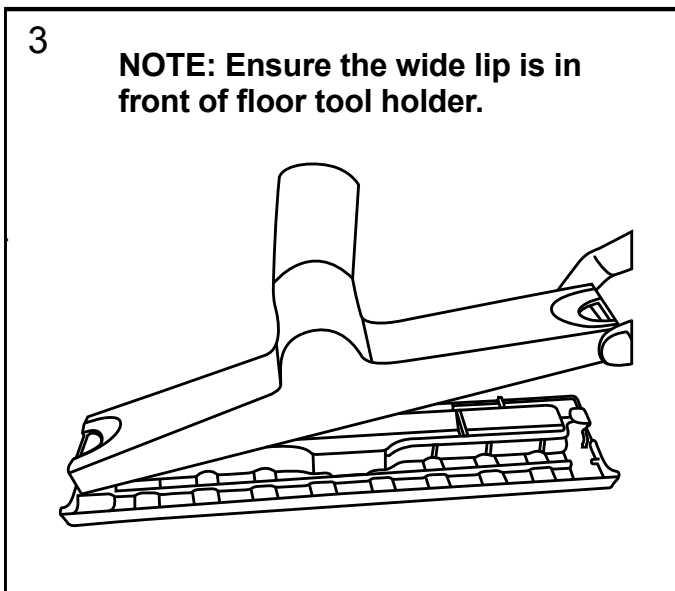
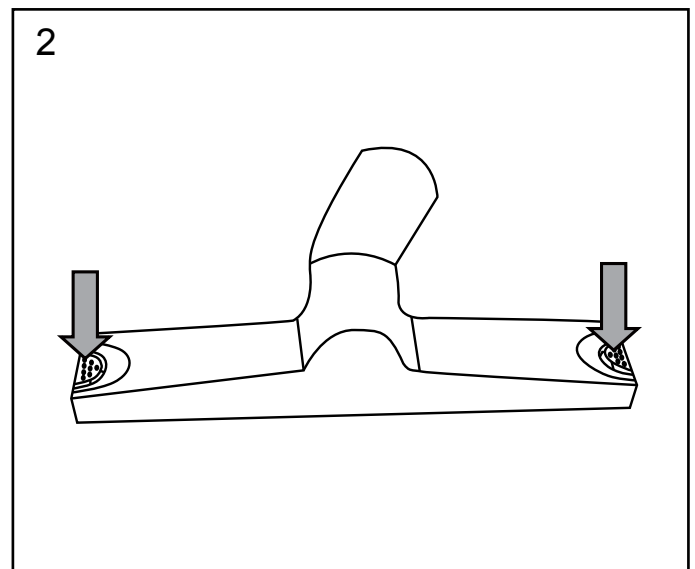
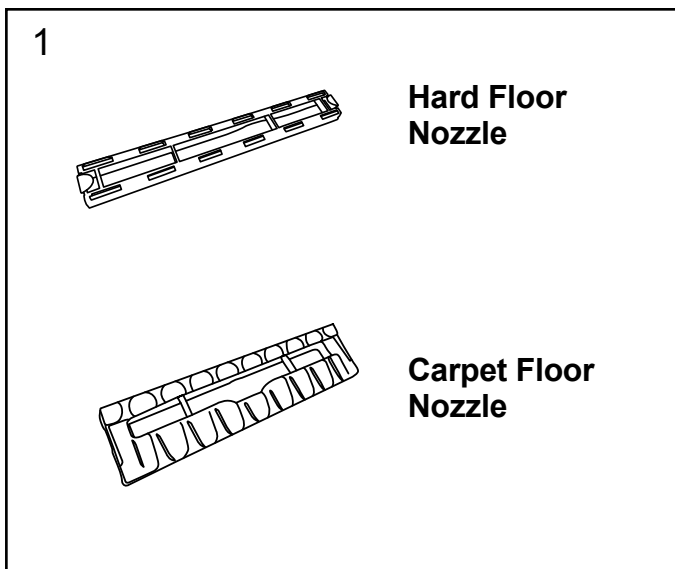
- Choose the desired accessories and/or extension wands and attach to the hose nozzle by pushing together and twisting to secure (Fig. 1).



# Assembly

## Step 8 - Removing / Attaching Floor Nozzle Attachments

- The two floor nozzle attachments are designed for different uses (Fig. 1). Ensure you have the correct floor nozzle attachment for maximum efficiency and dust collection.
  - Hard Floor Nozzle is suitable for wet or dry suction on hard floor surfaces. Ensure the squeegee is located towards the back of the floor tool holder and brushes towards the front.
  - Carpet Floor Nozzle is specifically designed for use on carpeted floor surfaces. Ensure the front lip is facing away from the user and in the direction of vacuuming.
- To remove the floor nozzle attachment, release the push clips on either side of the floor tool holder (Fig. 2). The attachment should drop out from underneath.
- To insert a new floor nozzle attachment, place one side of the attachment into the bottom of the floor tool holder and secure one clip in place (Fig. 3). Push the other side up into place and ensure it is securely fitted into the holder.



# Operation

## Dry & Wet Vacuum Operation



**WARNING:** Ensure you read, understand and apply section entitled 'SAFETY INFORMATION'.



**WARNING:** Do not vacuum in areas with flammable gases, vapours, or explosive dusts in the air. Do not vacuum hazardous substances. Flammable gases or vapours include but are not limited to: lighter fluid, solvent type cleaners, oil-based paints, gasoline, alcohol, or aerosol sprays. Explosive dusts include but are not limited to: coal, magnesium, grain, or gun powder. To reduce the risk of health hazards from vapours or dust, do not vacuum toxic materials.

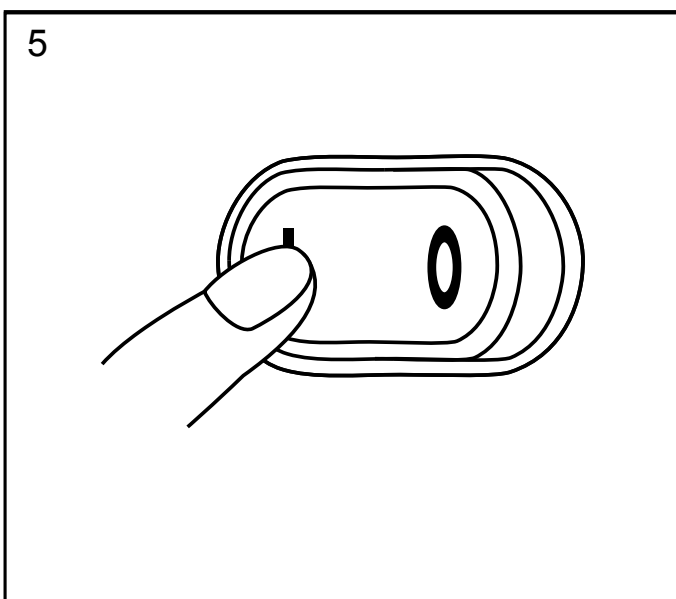
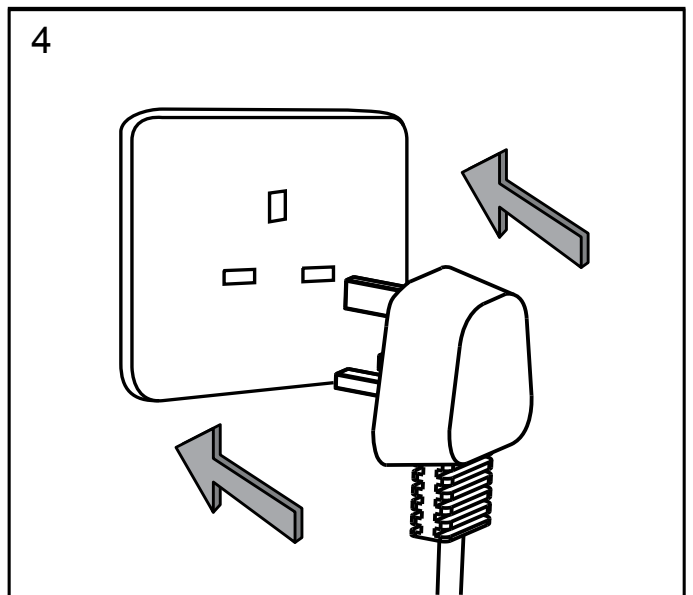
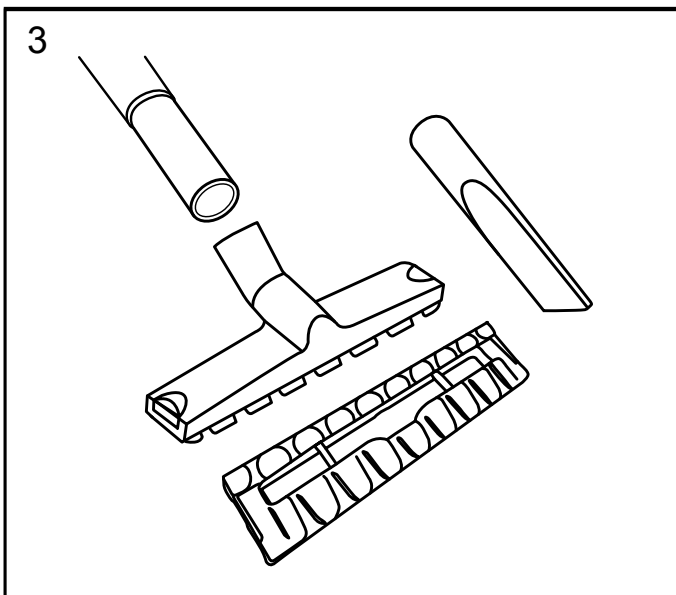
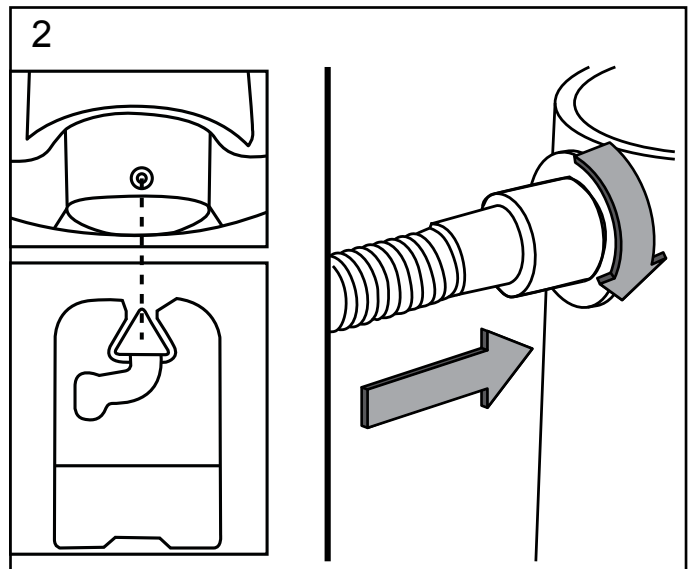
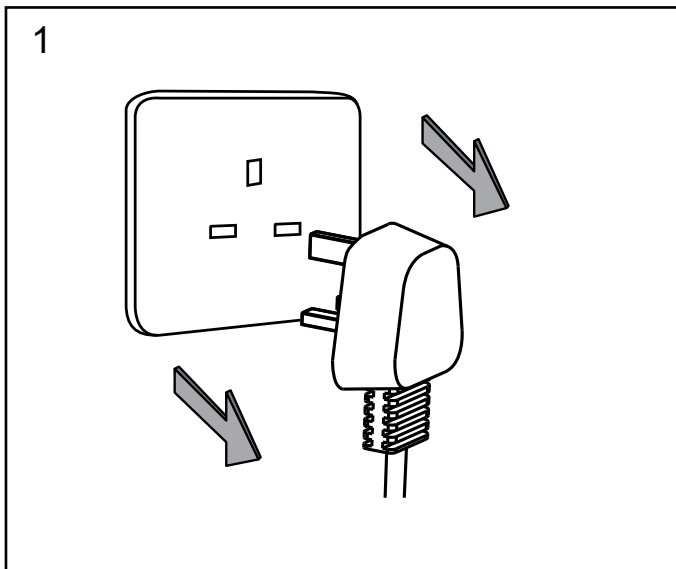
- Verify that the power cord is disconnected from the power outlet (Fig. 1).
- Choose the desired filter for dry or wet vacuuming following the instructions listed on page 15-17.
- Place the power head back on the container securing the latches on either side of the container.
- Insert the locking end of the hose into the vacuum port and lock in place (Fig. 2).
- Choose the desired accessories and extension wands and push fit onto the hose nozzle (Fig. 3).
- Plug the power cord into the power outlet (Fig. 4).
- Turn on the motor by assigning the switch to the "I" ON position (Fig. 5).
- Once you have completed vacuuming, switch to the "O" OFF position and unplug the power cord from the power outlet.

**O = OFF**

**I = ON**

# Operation

## Dry & Wet Vacuum Operation (continued)



# Operation

## Dry & Wet Vacuum Operation (continued)

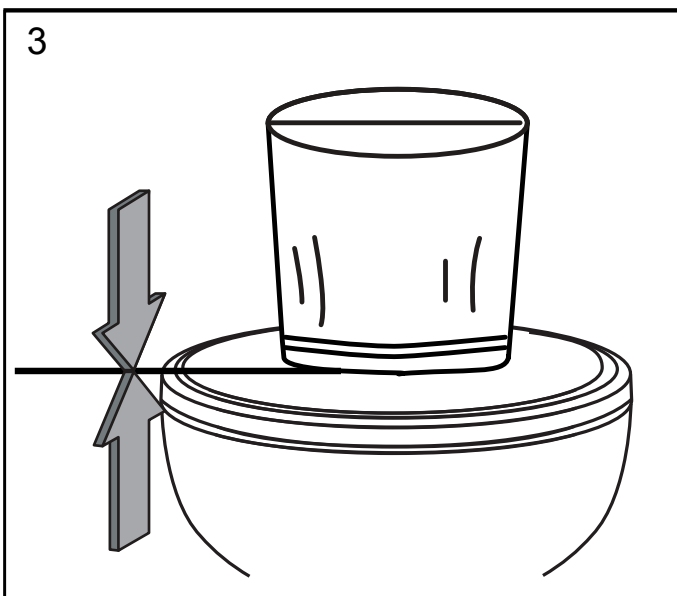
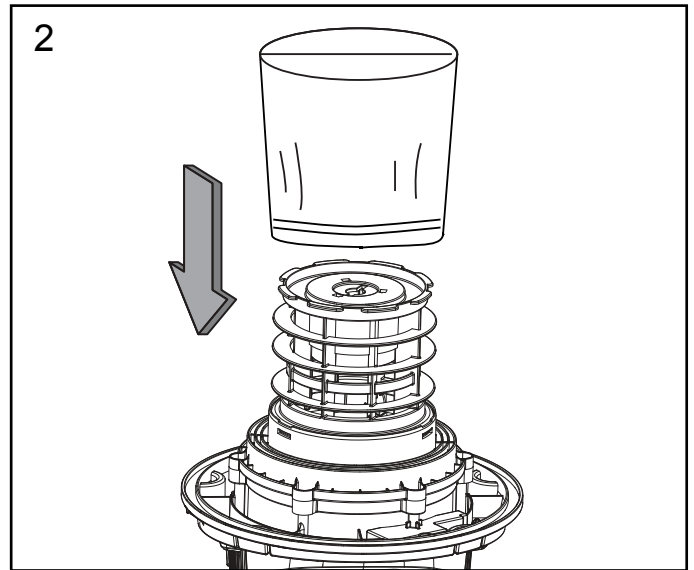
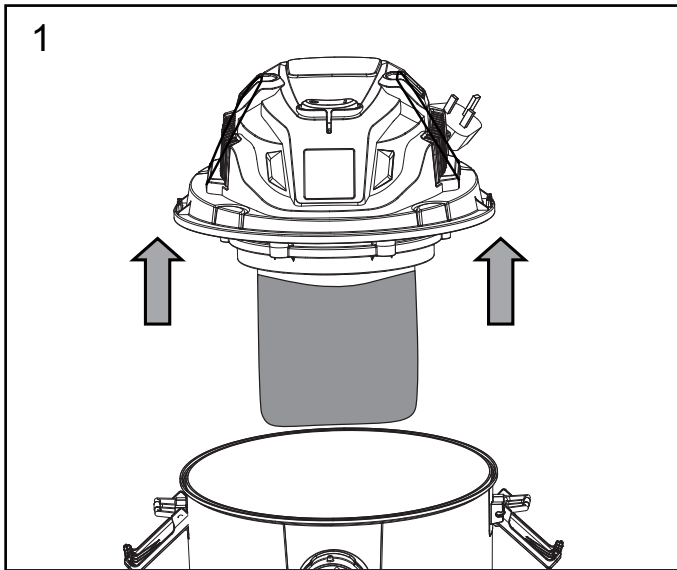


### FOR DRY VACUUMING:

**WARNING:** Before installing, removing or cleaning the vacuum cleaner filter, ensure that the vacuum is switched off and the power cord is removed from the power outlet.

**IMPORTANT:** Check the filter regularly for optimal performance. An old or blocked filter will reduce suction performance.

- Remove the power head and place in an upside-down position (Fig. 1).
- Slide reusable cloth filter down over the filter cage making sure the whole cage is covered. The elasticated opening should form a tight seal around the filter cage. Ensure there are no objects trapped between the filter cage and the cloth filter (Fig. 2 & 3).
- Recommended: For improved dust filtration, fully fit the dust bag flange onto the inlet stub, taking care not to damage the bag. The vacuum cleaner can be used with or without dust bags.
- Place the power head back on the container, and secure into place using the 2 side latches.





# Operation

## Dry & Wet Vacuum Operation (continued)



### FOR WET VACUUMING:

**WARNING:** Before installing, removing or cleaning the vacuum cleaner filter, ensure that the vacuum is switched off and the power cord is removed from the power outlet.



**WARNING:** Do not use the cloth filter and the dust bag for wet vacuuming.

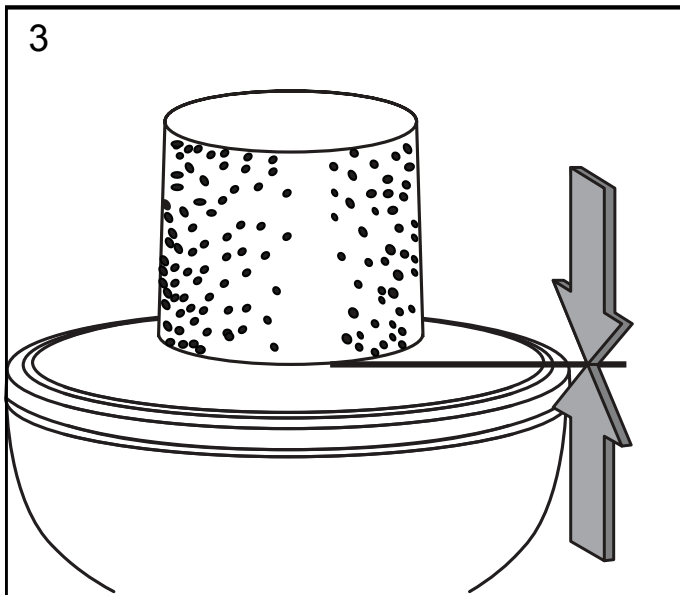
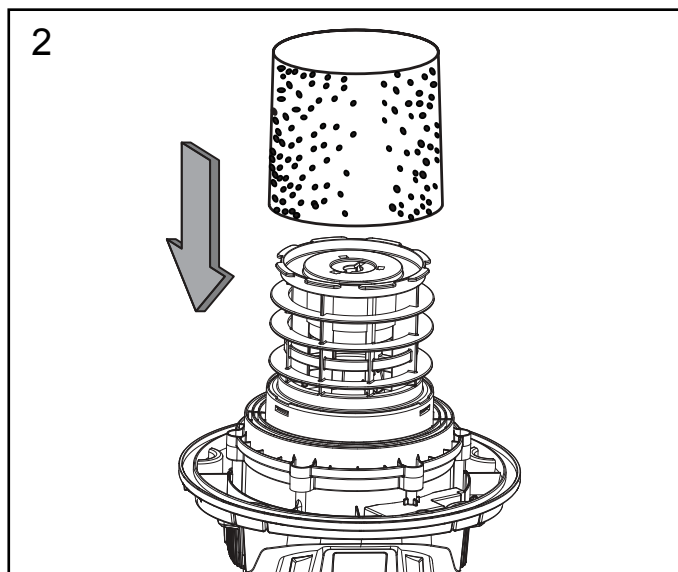
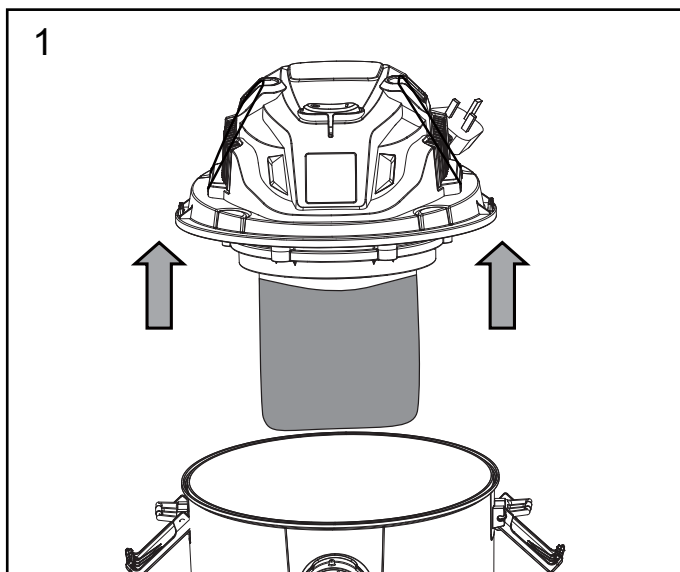
**IMPORTANT!** When vacuuming large quantities of liquids, do not immerse the nozzle completely in the liquid; leave a gap at the tip of the nozzle opening to allow air inflow. The machine is fitted with a float valve that stops the suction action when the container reaches its maximum capacity. You will notice an increase in motor noise. When this happens, turn off the machine, disconnect from power supply, and drain the liquid into a suitable receptacle or drain. To continue vacuuming, refit the power head to the container. After wet vacuuming, turn off the machine and remove the plug from the power supply. Empty the container, clean and dry inside and outside before storage.

- Remove the power head and place in an upside-down position (Fig. 1).
- Remove the dry-use cloth filter.
- Carefully install the supplied foam filter over the internal filter cage, making sure the whole cage is covered (Fig. 2 & 3).
- Place the power head back on the container, and secure into place using the 2 side latches.

**REMEMBER!** The foam filter must be removed after wet vacuuming and the reusable cloth filter must be reinstalled before dry vacuuming again.

# Operation

## Dry & Wet Vacuum Operation (continued)



# Operation

## Blower Operation



**WARNING:** Wear suitable personal protective equipment (PPE), such as a dust mask, when using the machine.



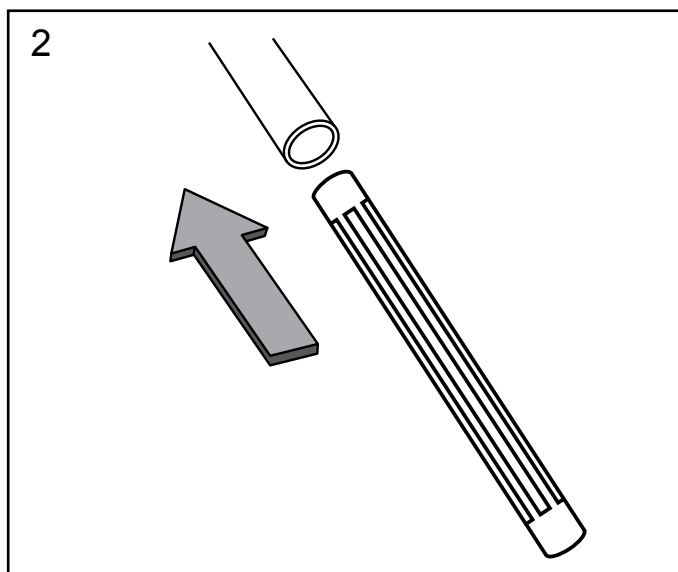
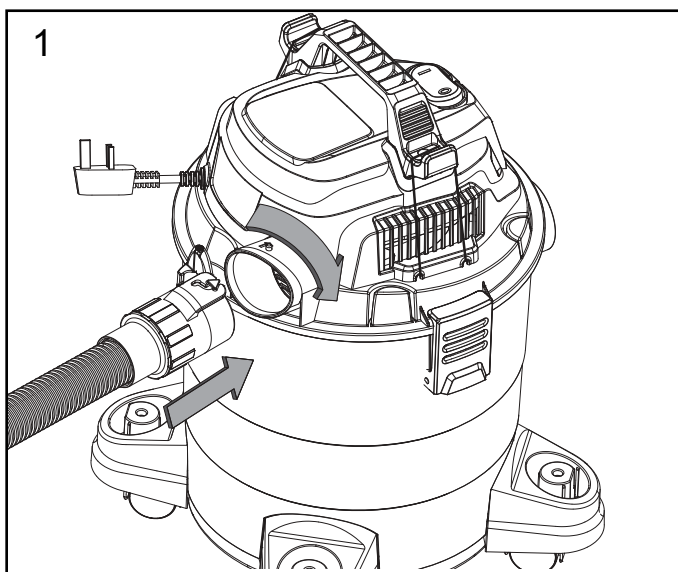
**WARNING:** Keep bystanders clear from blowing debris.



**WARNING:** Wear a dust mask if blowing creates dust that might be inhaled.

This wet and dry vacuum cleaner has blowing capabilities. To use the blower feature follow the instructions listed below.

- Verify that the power cord is disconnected from the power outlet.
- Make sure the container and any collected waste is emptied before using as a blower. This also includes removal of the dust bag if installed.
- Remove hose from the vacuum port.
- Insert the locking end of the hose into the blowing port on the rear side of the power head and lock into position (Fig. 1).
- Fit the desired extension wand or nozzle to the vacuum cleaner hose (Fig. 2).
- Ensure the on/off switch is turned off and plug into the power supply.
- Before turning on the wet and dry vacuum cleaner, firmly hold the loose end of the hose. Turn on the motor by turning the switch to the 'I' ON position.
- Once you have completed blowing, switch to the "O" OFF position and unplug the power cord from the power outlet.



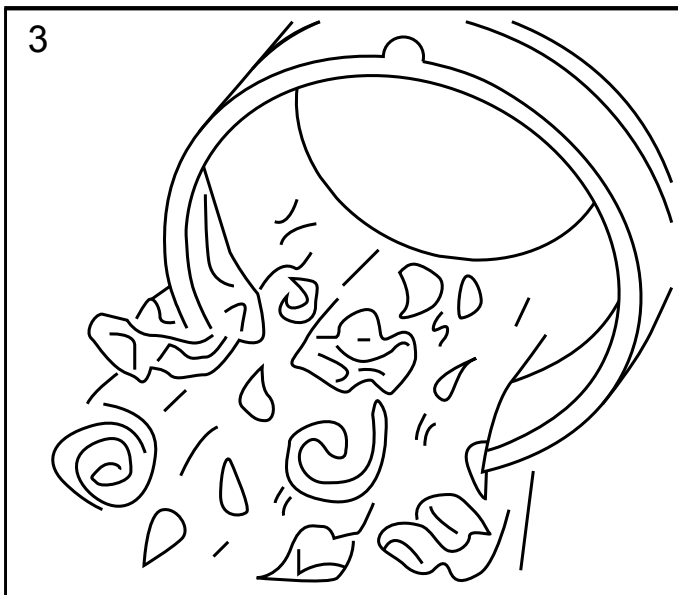
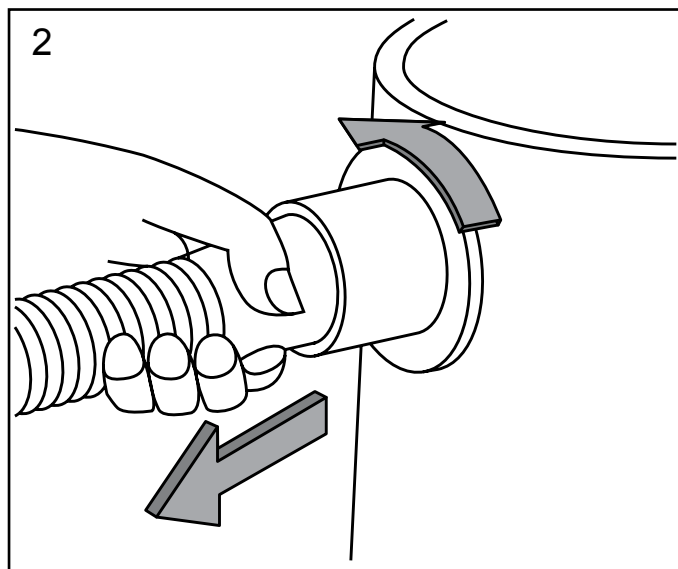
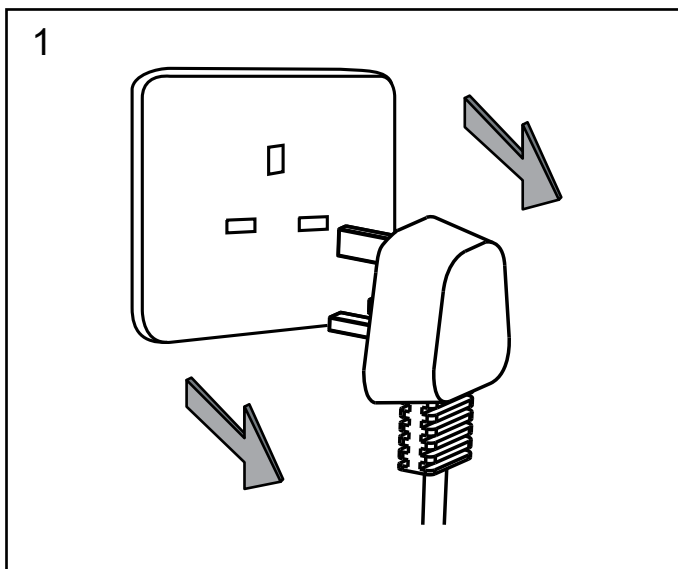
# Maintenance

## Emptying the Container



**WARNING:** Remove the power cord from the power supply before carrying out any maintenance.

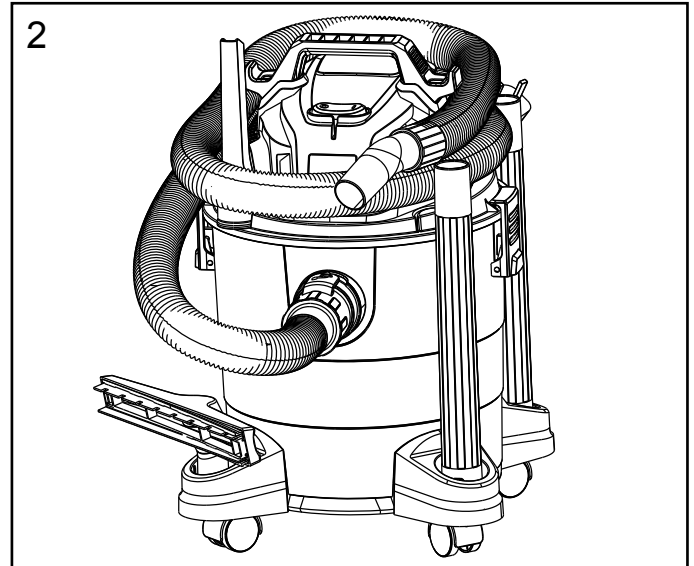
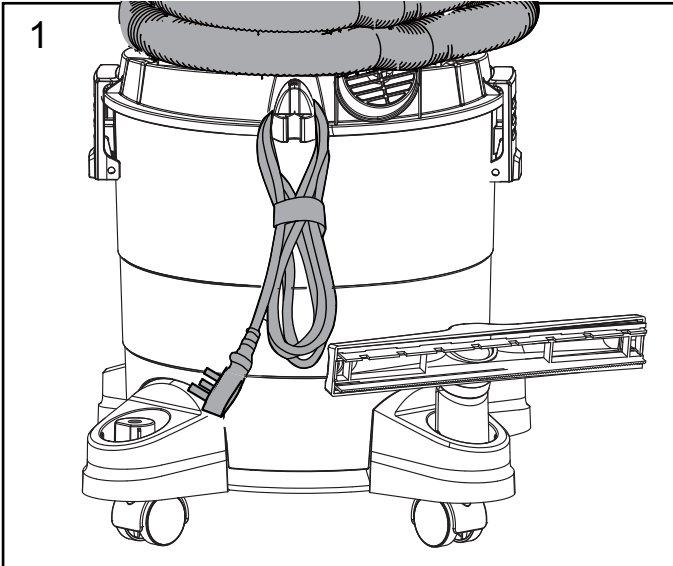
- Verify that the power cord is disconnected from the power outlet (Fig. 1).
- Disconnect the hose from the vacuum cleaner, turning counter clockwise in direction (Fig. 2).
- Un-clip the latches and remove the power head from the container.
- Clear all dirt and debris from the container and hose (Fig. 3).
- Check the hose, accessories, and power cord to verify that they have not been damaged or any debris is trapped and blocking airflow.



# Maintenance

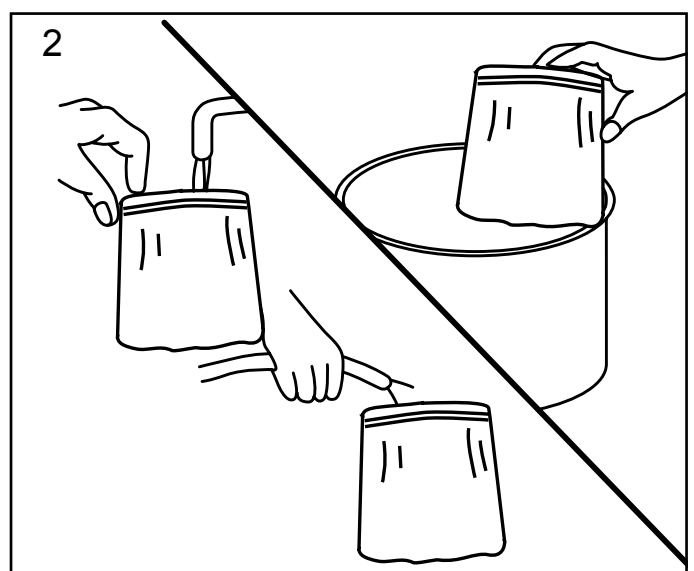
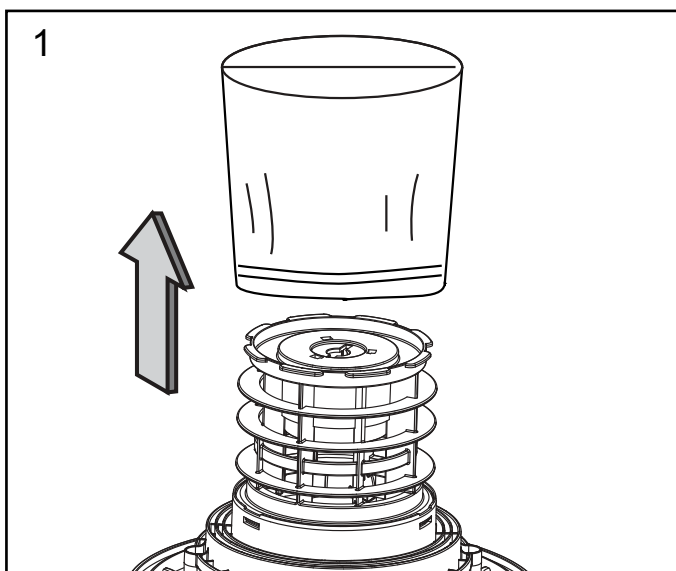
## Storage

- Before storing the vacuum, the container should be emptied and cleaned. Store the accessories onto the accessory storage. The cord should be wrapped then hung on the power cable storage hook (Fig. 1). The hose should be stored as illustrated. Secure the hose with the hose storage bands. Pull the hose storage bands upwards on each side and hook them onto the handle (Fig. 2). Store the wet/dry vacuum indoors.



## Cleaning Reusable Cloth Filter

- With the removed power head in an upside-down position, carefully remove the reusable cloth filter from the filter cage (Fig. 1).
- Clean the cloth filter by gently tapping or brushing dirt off. Cleaning should not be done indoors or in living areas. For optimal performance a new filter is recommended.
- Use a mild soap and water solution to wash reusable cloth filter and rinse with clean water. Allow filter to air dry before installing and using again (Fig. 2).
- Install the cleaned or new filter into place as instructed above on page 15.

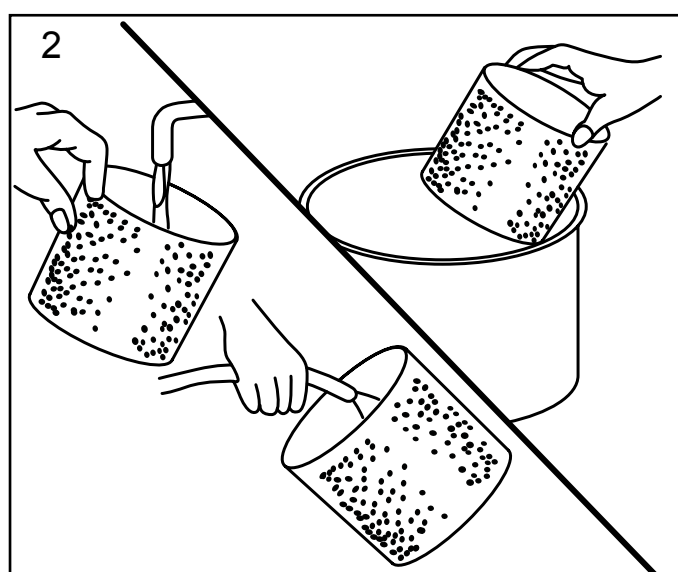
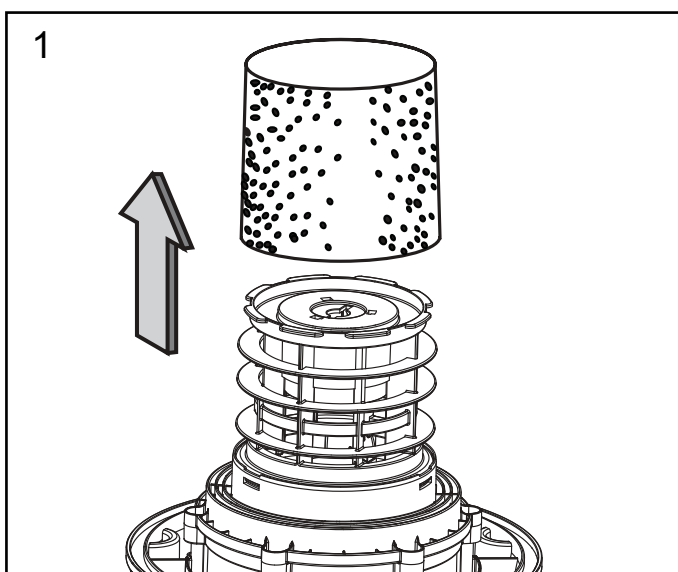


# Maintenance

## Cleaning Foam Wet Filter

- With the removed power head in an upside-down position, carefully remove the foam filter by pulling up and over the internal filter cage (Fig. 1).
- Use a mild soap and water solution to wash foam filter and rinse with clean water. Allow filter to air dry before installing and using again (Fig. 2).
- Install the cleaned or new filter into place as instructed above on page 16-17.

Replacement filters and dust bags can be purchased from the after sales helpline.



# Technical Data

## Technical Data Table

Model number	MCEWDV1316
Voltage	220-240V~ 50Hz
Power input	1300W
Tank volume	16L
Filter - Dry	Reusable cloth filter, Dust bag (optional)
Filter - Wet	Foam filter
Net weight	4.98kg

## Replacement Part List

PART NUMBER	ACCESSORIES
551046122	Hose
551051116	Crevice Tool
551023136	Floor Nozzle
551382105	Carpet Nozzle
951445	Extension Wands
950135	Reusable Cloth Filter
951319	Dust Bag
950086	Foam Filter

## Recycling and Disposal



Recycle unwanted materials instead of disposing of them as waste. All tools, hoses and packaging should be sorted, taken to the local recycling centre and disposed of in an environmentally safe way.

Recycle rather than dispose of unwanted material in landfill whenever possible. The machine must be delivered in rigid packaging to avoid damage during transportation. The packaging and the machine itself are manufactured from recyclable materials and should be disposed of accordingly.

Only dispose of electrical/electronic/battery items in separate collection schemes, which cater for the recovery and recycling of materials contained within. Your cooperation is vital to ensure the success of these schemes and for the protection of the environment.

Recycle packaging where facilities exist.

This symbol is known as the Crossed out Wheelie Bin Symbol. When this symbol is marked on a product or battery, it means that it should not be disposed of with your general household waste. Some chemicals contained within electrical/electronic products or batteries can be harmful to health.



# Troubleshooting

## General Troubleshooting



**WARNING:** Only perform the steps described within these instructions! All further inspection, maintenance and repair work must be performed by a qualified specialist.



**WARNING:** To reduce the risk of electric shock, unplug before troubleshooting.

### CLEANING PERFORMANCE

All vacuum cleaners are very simple and reliable machines, a motor with a fan attached to move air through the machine.

McGregor vacuum cleaners are robust and tested for endurance. If your motor is operating, then the most likely cause for a loss in suction is a blockage or an opening somewhere in the appliance.

For a vacuum cleaner to do its job correctly, it needs a working filter (in good condition) in position to help capture dust particles. The optional dust bags help to increase the level of filtration and dust collection. As filters and dust bags become blocked over time, you should expect a drop in performance. This is normal and a good result, it shows that the vacuum cleaner is effectively pulling up and trapping the dust. In short, it's doing what it's supposed to.

To maintain a high cleaning performance from your machine, it is important to replace or clean filters as necessary. This can be done with a soft paint brush, being careful not to damage the filter. If you also use dust bags, you will need to replace these when the bag is full or the performance drops.

A performance drop with clean filters can only be caused by a blockage in the tools or the hose. Check all accessories for blockages, and ensure the joints between the vacuum and the end of the nozzle are fitted correctly.

Fault	Possible Cause	Solution
The appliance does not work.	No power.	Check the power supply and fuse.
	Functional fault in the power cord, switch, or motor.	Have the damaged part checked by qualified person or contact the after sales helpline.
Dust is escaping from the motor cover	The reusable cloth filter is missing or damaged.	Put in a cloth filter or replace it.
	Misuse of the foam filter when dry vacuuming.	Replace the foam filter with the cloth filter.
Low suction power and high operating noise / vibrations.	Dust bag is full.	Replace the dust bag.
	Suction nozzle, hose, or tank inlet is plugged.	Check the suction nozzle, hose, and tank inlet for obstructions.
	Reusable cloth filter is blocked.	Remove the reusable cloth filter and clean.
	Float valve has closed.	Empty the container of any liquid waste and ensure the float valve located underneath the filter is able to move freely.

# Getting Help

## Customer Helpline

Our dedicated UK based after sales helpline is open to assist you with assembly, parts queries and technical support.

**After sales support number: 03304 410 459**

## Guarantee

Dear Customer,

In the unlikely event that your device develops a fault, please contact our Customer service department on the telephone number shown below.

1. These guarantee terms cover additional guarantee rights and do not affect your statutory warranty rights. Claims must be accompanied by Proof of Purchase. This must be in the form of a Sales receipt or Bank statement and must show that the product has been purchased within 2 years prior to the claim, from the retailer that it was originally sold to.
2. Our guarantee covers problems caused by material or manufacturing defects.  
Please note that our devices have not been designed for use in commercial, trade or industrial applications. Consequently, the guarantee is invalidated if the equipment is used in commercial, trade or industrial applications or for other equivalent activities.
3. The following are also excluded from our guarantee:
  - A. Faults due to accidents, customer misuse or unauthorized repairs
  - B. Failure due to lack of routine maintenance.
  - C. Failure as a result of not using the equipment in accordance with the manual and safety instructions.
  - D. Accidental damage or wear to cables or blades.
4. The guarantee is valid for a period of 2 years starting from the purchase date of the device.  
Guarantee claims should be submitted before the end of the guarantee period within two weeks of the defect being noticed. No guarantee claims will be accepted after the end of the guarantee period. The original guarantee period remains applicable to the device even if repairs are carried out or parts are replaced. In such cases, the work performed or parts fitted will not result in an extension of the guarantee period, and no new guarantee will become active for the work performed or parts fitted.
5. Please keep your sales receipt in a safe place.