



MCGREGOR

INSTRUCTION MANUAL

- Please retain for future reference



750W ELECTRIC ANGLE GRINDER

SKU: 7746855 (Model: MCEAG75)

Important - Please read these instructions fully before using the product.

These instructions contain important information that will help you get the best from your product, ensuring it is operated correctly and safely. If you need help or have damaged or missing parts, call the Customer Helpline on 0345 6052065

**AFTER SALES SUPPORT
0345 605 2065**

Contents

Safety information.....	3
In the box.....	17
Preparation.....	18
Operation.....	20
Maintenance.....	21
Spare parts.....	21
Working hints.....	21
Technical data.....	22
Troubleshooting.....	23
Guarantee.....	24

Produced in China for Argos Limited, London, EC1M 6HA, UK.
Argos (N.I.) Ltd., Forestside Shopping Centre, Upper Galwally,
Belfast, BT8 6FX, UK.

Safety information

Important - Please read these instructions fully before use

General safety



WARNING!

Keep this instruction manual in a safe place for reference at a later date.

Always ensure anyone intending to operate this angle grinder is fully conversant with the contents of this manual prior to assembling, maintaining or operating the angle grinder.

Failure to observe this warning may lead to serious injury, death, or damage to the angle grinder.

Always take care when removing the packaging to prevent damage to you or to the angle grinder.

Safety information

Important - Please read these instructions fully before use

Personal safety



WARNING!

Only operate the angle grinder if you are wearing the correct Personal Protective Equipment (PPE) as described in the following warnings.

Warning symbols

Some of the following symbols may be marked on the product and indicate the appropriate safety measures to be taken when operating the product.



To reduce the risk of injury, user must read instruction manual



Warning



Wear ear protection



Wear eye protection



Wear dust mask



Always operate with two hands



Do not use the guard for cut-off operations

Safety information

Important - Please read these instructions fully before use

Warning symbols



Double insulation



Waste electrical products must not be disposed of with household waste. Please recycle where facilities exist. Check with your local authorities or retailer for recycling advice.



Conforms to relevant EU regulatory requirements



Conforms to relevant UK regulatory requirements

Safety information

Important - Please read these instructions fully before use

General power tool safety warnings

WARNING!

Read all safety warnings, instructions, illustrations and specifications provided with this power tool. *Failure to follow all instructions listed below may result in electric shock, fire and/or serious injury.*

Save all warnings and instructions for future reference. *The term “power tool” in the warnings refers to your mains-operated (corded) power tool or battery-operated (cordless) power tool.*

1) Work area safety

- a) **Keep work area clean and well lit.** *Cluttered or dark areas invite accidents.*
- b) **Do not operate power tools in explosive atmospheres, such as in the presence of flammable liquids, gases or dust.** *Power tools create sparks which may ignite the dust or fumes.*
- c) **Keep children and bystanders away while operating a power tool.** *Distractions can cause you to lose control.*

2) Electrical safety

- a) **Power tool plugs must match the outlet. Never modify the plug in any way. Do not use any adapter plugs with earthed (grounded) power tools.** *Unmodified plugs and matching outlets will reduce risk of electric shock.*
- b) **Avoid body contact with earthed or grounded surfaces, such as pipes, radiators, ranges and refrigerators.** *There is an increased risk of electric shock if your body is earthed or grounded.*
- c) **Do not expose power tools to rain or wet conditions.** *Water entering a power tool will increase the risk of electric shock.*

Safety information

Important - Please read these instructions fully before use

General power tool safety warnings

- d) Do not abuse the cord. Never use the cord for carrying, pulling or unplugging the power tool. Keep cord away from heat, oil, sharp edges or moving parts. *Damaged or entangled cords increase the risk of electric shock.***
- e) When operating a power tool outdoors, use an extension cord suitable for outdoor use. *Use of a cord suitable for outdoor use reduces the risk of electric shock.***
- f) If operating a power tool in a damp location is unavoidable, use a residual current device (RCD) protected supply. *Use of an RCD reduces the risk of electric shock.***

3) Personal safety

- a) Stay alert, watch what you are doing and use common sense when operating a power tool. Do not use a power tool while you are tired or under the influence of drugs, alcohol or medication. *A moment of inattention while operating power tools may result in serious personal injury.***
- b) Use personal protective equipment. Always wear eye protection. *Protective equipment such as dust mask, non-skid safety shoes, hard hat, or hearing protection used for appropriate conditions will reduce personal injuries.***
- c) Prevent unintentional starting. Ensure the switch is in the off-position before connecting to power source and/or battery pack, picking up or carrying the tool. *Carrying power tools with your finger on the switch or energising power tools that have the switch on invites accidents.***
- d) Remove any adjusting key or wrench before turning the power tool on. *A wrench or a key left attached to a rotating part of the power tool may result in personal injury.***
- e) Do not overreach. Keep proper footing and balance at all times. *This enables better control of the power tool in unexpected situations.***
- f) Dress properly. Do not wear loose clothing or jewellery.**

Safety information

Important - Please read these instructions fully before use

General power tool safety warnings

Keep your hair and clothing away from moving parts. *Loose clothes, jewellery or long hair can be caught in moving parts.*

- g) If devices are provided for the connection of dust extraction and collection facilities, ensure these are connected and properly used.** *Use of dust collection can reduce dust-related hazards.*
- h) Do not let familiarity gained from frequent use of tools allow you to become complacent and ignore tool safety principles.** *A careless action can cause severe injury within a fraction of a second.*

4) Power tool use and care

- a) Do not force the power tool. Use the correct power tool for your application.** *The correct power tool will do the job better and safer at the rate for which it was designed.*
- b) Do not use the power tool if the switch does not turn it on and off.** *Any power tool that cannot be controlled with the switch is dangerous and must be repaired.*
- c) Disconnect the plug from the power source and/ or remove the battery pack, if detachable, from the power tool before making any adjustments, changing accessories, or storing power tools.** *Such preventive safety measures reduce the risk of starting the power tool accidentally.*
- d) Store idle power tools out of the reach of children and do not allow persons unfamiliar with the power tool or these instructions to operate the power tool.** *Power tools are dangerous in the hands of untrained users.*
- e) Maintain power tools and accessories. Check for misalignment or binding of moving parts, breakage of parts and any other condition that may affect the power tool's operation. If damaged, have the power tool repaired before use.** *Many accidents are caused by poorly*

Safety information

Important - Please read these instructions fully before use

General power tool safety warnings

maintained power tools.

- f) **Keep cutting tools sharp and clean.** *Properly maintained cutting tools with sharp cutting edges are less likely to bind and are easier to control.*
- g) **Use the power tool, accessories and tool bits etc. in accordance with these instructions, taking into account the working conditions and the work to be performed.** *Use of the power tool for operations different from those intended could result in a hazardous situation.*
- h) **Keep handles and grasping surfaces dry, clean and free from oil and grease.** *Slippery handles and grasping surfaces do not allow for safe handling and control of the tool in unexpected situations.*

5) Service

- a) **Have your power tool serviced by a qualified repair person using only identical replacement parts.** *This will ensure that the safety of the power tool is maintained.*

Safety information

Important - Please read these instructions fully before use

Safety instructions for all operations

Safety warnings common for grinding or cutting-off operations:

- a) **This power tool is intended to function as a grinder or cut-off tool. Read all safety warnings, instructions, illustrations and specifications provided with this power tool. *Failure to follow all instructions listed below may result in electric shock, fire and/or serious injury.***
- b) **Operations such as sanding, wire brushing, polishing or hole cutting are not to be performed with this power tool. *Operations for which the power tool was not designed may create a hazard and cause personal injury.***
- c) **Do not convert this power tool to operate in a way which is not specifically designed and specified by the tool manufacturer. *Such a conversion may result in a loss of control and cause serious personal injury.***
- d) **Do not use accessories which are not specifically designed and specified by the tool manufacturer. *Just because the accessory can be attached to your power tool, it does not assure safe operation.***
- e) **The rated speed of the accessory must be at least equal to the maximum speed marked on the power tool. *Accessories running faster than their rated speed can break and fly apart.***
- f) **The outside diameter and the thickness of your accessory must be within the capacity rating of your power tool. *Incorrectly sized accessories cannot be adequately guarded or controlled.***
- g) **The dimensions of the accessory mounting must fit the dimensions of the mounting hardware of the power tool. *Accessories that do not match the mounting hardware of the power tool will run out of balance, vibrate excessively and may cause loss of control.***
- h) **Do not use a damaged accessory. Before each use inspect the accessory such as abrasive wheels for**

Safety information

Important - Please read these instructions fully before use

Safety instructions for all operations

chips and cracks, backing pad for cracks, tear or excess wear, wire brush for loose or cracked wires. If power tool or accessory is dropped, inspect for damage or install an undamaged accessory. After inspecting and installing an accessory, position yourself and bystanders away from the plane of the rotating accessory and run the power tool at maximum no-load speed for one minute. *Damaged accessories will normally break apart during this test time.*

- i) **Wear personal protective equipment.** Depending on application, use face shield, safety goggles or safety glasses. As appropriate, wear dust mask, hearing protectors, gloves and workshop apron capable of stopping small abrasive or workpiece fragments. *The eye protection must be capable of stopping flying debris generated by various applications. The dust mask or respirator must be capable of filtering particles generated by the particular application. Prolonged exposure to high intensity noise may cause hearing loss.*
- j) **Keep bystanders a safe distance away from work area.** **Anyone entering the work area must wear personal protective equipment.** *Fragments of workpiece or of a broken accessory may fly away and cause injury beyond immediate area of operation.*
- k) **Hold the power tool by insulated gripping surfaces only, when performing an operation where the cutting accessory may contact hidden wiring or its own cord.** *Cutting accessory contacting a "live" wire may make exposed metal parts of the power tool "live" and could give the operator an electric shock.*
- l) **Position the cord clear of the spinning accessory.** *If you lose control, the cord may be cut or snagged and your hand or arm may be pulled into the spinning accessory.*

Safety information

Important - Please read these instructions fully before use

Safety instructions for all operations

- m) **Never lay the power tool down until the accessory has come to a complete stop.** *The spinning accessory may grab the surface and pull the power tool out of your control.*
- n) **Do not run the power tool while carrying it at your side.** *Accidental contact with the spinning accessory could snag your clothing, pulling the accessory into your body.*
- o) **Regularly clean the power tool's air vents.** *The motor's fan will draw the dust inside the housing and excessive accumulation of powdered metal may cause electrical hazards.*
- p) **Do not operate the power tool near flammable materials.** *Sparks could ignite these materials.*
- q) **Do not use accessories that require liquid coolants.** *Using water or other liquid coolants may result in electrocution or shock.*
- r) Your hand must hold on the handle when you are working. *Always use the auxiliary handles supplied with the tool. Loss of control can cause personal injury.*

Safety information

Important - Please read these instructions fully before use

Further safety instructions for all operations

Kickback and Related Warnings

Kickback is a sudden reaction to a pinched or snagged rotating wheel, backing pad, brush or any other accessory. Pinching or snagging causes rapid stalling of the rotating accessory which in turn causes the uncontrolled power tool to be forced in the direction opposite of the accessory's rotation at the point of the binding.

For example, if an abrasive wheel is snagged or pinched by the workpiece, the edge of the wheel that is entering into the pinch point can dig into the surface of the material causing the wheel to climb out or kick out. The wheel may either jump toward or away from the operator, depending on direction of the wheel's movement at the point of pinching. Abrasive wheels may also break under these conditions.

Kickback is the result of power tool misuse and/or incorrect operating procedures or conditions and can be avoided by taking proper precautions as given below.

- a) **Maintain a firm grip with both hands on the power tool and position your body and arms to allow you to resist kickback forces. Always use auxiliary handle, if provided, for maximum control over kickback or torque reaction during start-up.** *The operator can control torque reactions or kickback forces, if proper precautions are taken.*
- b) **Never place your hand near the rotating accessory.** *Accessory may kickback over your hand.*
- c) **Do not position your body in the area where power tool will move if kickback occurs.** *Kickback will propel the tool in direction opposite to the wheel's movement at the point of snagging.*
- d) **Use special care when working corners, sharp edges etc. Avoid bouncing and snagging the accessory.** *Corners, sharp edges or bouncing have a tendency to snag the rotating accessory and cause loss of control or kickback.*

Safety information

Important - Please read these instructions fully before use

Further safety instructions for all operations

- e) Do not attach a saw chain woodcarving blade, segmented diamond wheel with a peripheral gap greater than 10 mm or toothed saw blade. *Such blades create frequent kickback and loss of control.***

Additional safety instructions for grinding and cutting-off operations

Safety warnings specific for grinding and cutting-off operations:

- a) Use only wheel types that are specified for your power tool and the specific guard designed for the selected wheel. *Wheels for which the power tool was not designed cannot be adequately guarded and are unsafe.***
- b) The grinding surface of centre depressed wheels must be mounted below the plane of the guard lip. *An improperly mounted wheel that projects through the plane of the guard lip cannot be adequately protected.***
- c) The guard must be securely attached to the power tool and positioned for maximum safety, so the least amount of wheel is exposed towards the operator. *The guard helps to protect the operator from broken wheel fragments, accidental contact with wheel and sparks that could ignite clothing.***
- d) Wheels must be used only for specified applications. **For example: do not grind with the side of cut-off wheel.** *Abrasive cut-off wheels are intended for peripheral grinding, side forces applied to these wheels may cause them to shatter.***
- e) Always use undamaged wheel flanges that are of correct size and shape for your selected wheel. *Proper wheel flanges support the wheel thus reducing the possibility of wheel breakage. Flanges for cut-off wheels may be different from grinding wheel flanges.***

Safety information

Important - Please read these instructions fully before use

Additional safety instructions for grinding and cutting-off operations

- f) Do not use worn down wheels from larger power tools.**
A wheel intended for larger power tool is not suitable for the higher speed of a smaller tool and may burst.
- g) When using dual purpose wheels always use the correct guard for the application being performed.**
Failure to use the correct guard may not provide the desired level of guarding, which could lead to serious injury.
- h) Warning! Grinding thin sheets of metal or other easily vibrating structures with a large surface can result in a total noise emission much higher (up to 15 dB) than the declared noise emission values. Such workpieces should as far as possible be prevented from emitting sound by suitable measures such as the application of heavy flexible damping mats. The increased noise emission is also to be considered for both the risk assessment of noise exposure and selecting adequate hearing protection.**

Additional safety instructions for cutting-off operations

Additional safety warnings specific for cutting-off operations:

- a) Do not “jam” the cut-off wheel or apply excessive pressure. Do not attempt to make an excessive depth of cut.** *Overstressing the wheel increases the loading and susceptibility to twisting or binding of the wheel in the cut and the possibility of kickback or wheel breakage.*
- b) Do not position your body in line with and behind the rotating wheel.** *When the wheel, at the point of operation, is moving away from your body, the possible kickback may propel the spinning wheel and the power tool directly at you.*
- c) When the wheel is binding or when interrupting a cut for any reason, switch off the power tool and hold it**

Safety information

Important - Please read these instructions fully before use

Additional safety instructions for cutting-off operations

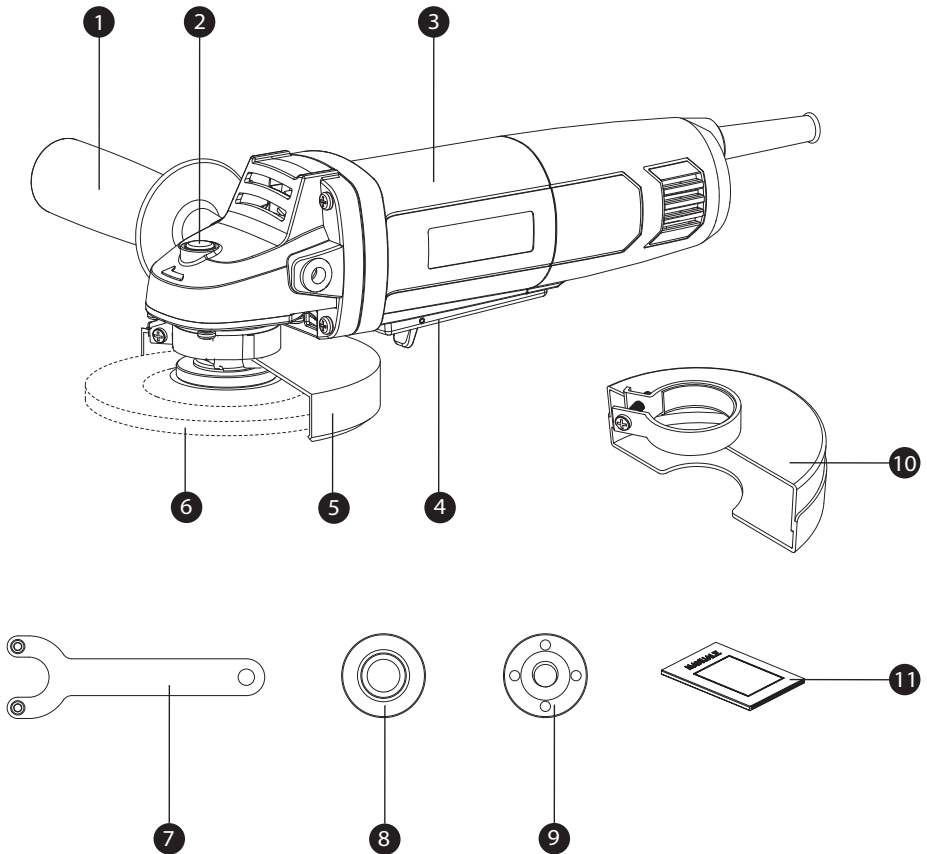
motionless until the wheel comes to a complete stop. **Never attempt to remove the cut-off wheel from the cut while the wheel is in motion otherwise kickback may occur.** *Investigate and take corrective action to eliminate the cause of wheel binding.*

- d) **Do not restart the cutting operation in the workpiece. Let the wheel reach full speed and carefully re-enter the cut.** *The wheel may bind, walk up or kickback if the power tool is restarted in the workpiece.*
- e) **Support panels or any oversized workpiece to minimize the risk of wheel pinching and kickback.** *Large workpieces tend to sag under their own weight. Supports must be placed under the workpiece near the line of cut and near the edge of the workpiece on both sides of the wheel.*
- f) **Use extra caution when making a “pocket cut” into existing walls or other blind areas.** *The protruding wheel may cut gas or water pipes, electrical wiring or objects that can cause kickback.*
- g) **Do not attempt to do curved cutting.** *Overstressing the wheel increases the loading and susceptibility to twisting or binding of the wheel in the cut and the possibility of kickback or wheel breakage, which can lead to serious injury.*

In the box

Parts

- 1 Auxiliary handle
- 2 Spindle lock button
- 3 Hand grip area
- 4 On/off switch
- 5 Wheel guard for grinding
- 6 Grinding wheel (not supplied)
- 7 Spanner
- 8 Inner flange
- 9 Outer flange
- 10 Wheel guard for cutting
- 11 Instruction manual



Preparation

Preparing instructions

1. INSTALLING AND ADJUSTING THE WHEEL GUARD (GRINDING OR CUTTING) (SEE FIG. A)

Before any work on the tool itself, remove the mains plug from socket.

For work with grinding or cutting discs, the wheel guard must be mounted.

Wheel Guard for Grinding

The coded projection on the wheel guard ensures that only a guard that fits the tool type can be mounted. Loosen the clamp adjusting nut. Place the wheel guard with coded projection into the coded groove on the spindle of the tool head and rotate to the required position (working position). Then tighten the clamp adjusting nut.

Wheel Guard for Cutting



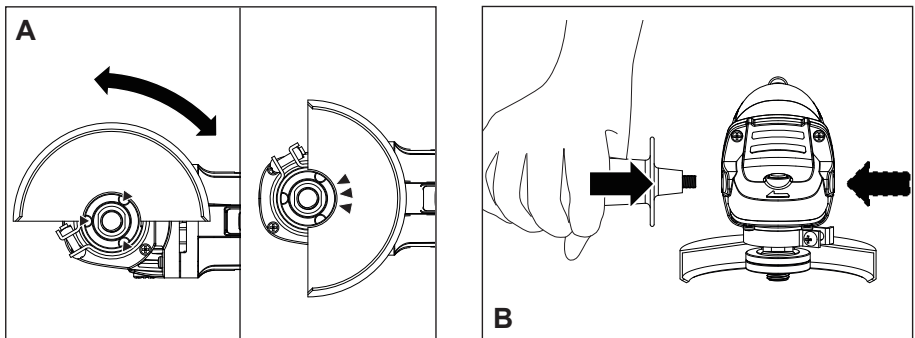
WARNING: For cutting metal, always work with the wheel guard for cutting.

The wheel guard for cutting is mounted in the same manner as the wheel guard for grinding.

2. INSTALLING AND ADJUSTING AUXILIARY HANDLE (SEE FIG. B)

You have the option of two working positions to provide the safest and most comfortable control of your angle grinder. The handle is screwed clockwise into either hole on the sides of the gear case.

NOTE: This handle should be used at all times to maintain complete control of the tool.



3. FITTING THE DISCS (NOT SUPPLIED) (SEE FIG. C1-C3)

Put the inner flange onto the tool spindle. Ensure it is located on the two flats of spindle. Place the disc on the tool spindle and inner flange. Ensure it is correctly located. Fit the threaded outer flange making sure it is facing in the correct direction for the type of disc fitted. For grinding discs, the flange is fitted with the raised portion facing towards the disc. For cutting discs, the flange is fitted with the raised portion facing away from the disc.

Press in the spindle lock button and rotate the spindle by hand until it is locked. Keeping the lock button pressed in, tighten the outer flange with the spanner provided.

NOTE: Check that the grinding wheel is correctly mounted and that it can turn freely, make sure that the grinding wheel does not catch against the protecting guard or other parts.

4. SPINDLE LOCK BUTTON

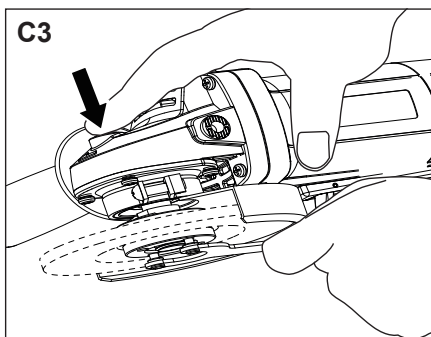
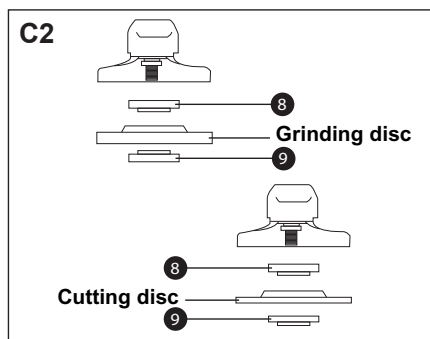
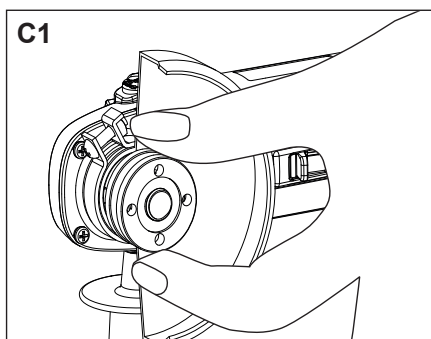
Clean the grinder spindle and all parts to be mounted. For clamping and loosening the grinding wheel, lock the grinder spindle with the spindle lock button.



WARNING: Actuate the spindle lock button only when the grinder spindle is at a standstill!

Preparation

Preparing instructions



Operation

Operating instructions

INTENDED USE

This tool is intended for cutting, roughing and brushing metal and stone materials without using water. For cutting metal, a special protection guard for cutting must be used.

1. HAND GRIP AREAS

Always hold your angle grinder firmly with both hands when operating.

2. SAFETY LOCK-OFF SWITCH (SEE FIG. D)

Your switch is locked off to prevent accidental starting. With your hand on the on/off switch (a), use your finger to push lever (b) back and then depress on/off switch (a). Then release lever (b).

Your tool is now on. To switch off just release on/off switch.

3. TO USE THE GRINDER (SEE FIG E)



WARNING! For grinding, always work with the grinding guard.



WARNING! Do not switch the grinder on whilst the disc is in contact with the workpiece. Allow the disc to reach full speed before starting to grind.

Hold your angle grinder with one hand on the main handle and other hand firmly around the auxiliary handle.

Always position the guard so that as much of the exposed disc as possible is pointing away from you.

Be prepared for a stream of sparks when the disc touches the metal.

For best tool control, material removal and minimum overloading, maintain an angle between the disc and work surface of approximately 15°-30° when grinding.

Use caution when working into corners as contact with the intersecting surface may cause the grinder to jump or twist.

When grinding is complete, allow the workpiece to cool. Do not touch the hot surface.

4. CUTTING



WARNING! For cutting, always work with the cutting guard.

When cutting, do not press, tilt or oscillate the tool. Work with moderate feed, adapted to the material being cut. Do not reduce the speed of running down cutting discs by applying sideward pressure.

The direction in which the cutting is performed is important.

The tool must always work in an up-grinding motion. Therefore, never move the tool in the other direction!

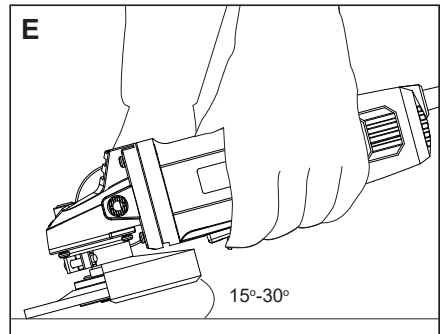
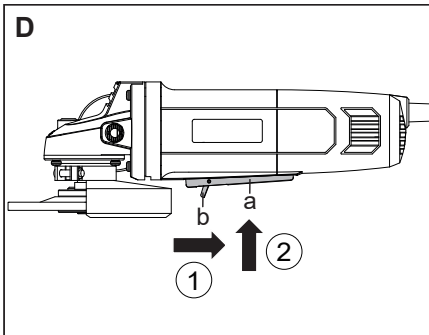
Otherwise, the danger exists of it being pushed uncontrolled out of the cut.

5. OVERLOAD

Overloading will cause damage to the motor of your angle grinder. This can happen if your angle grinder is subjected to heavy use for prolonged periods of time.

Do not in any circumstances, attempt to exert too much pressure on your angle grinder to speed up your work.

If your angle grinder becomes too hot, run the angle grinder under no load for 2-3 minutes until it has cooled to normal operation temperature.



Maintenance

Maintenance

Remove the plug from the socket before carrying out any adjustment, servicing or maintenance.

Your power tool requires no additional lubrication or maintenance. There are no user serviceable parts in your power tool. Never use water or chemical cleaners to clean your power tool. Wipe clean with a dry cloth. Always store your power tool in a dry place. Keep the motor ventilation slots clean. Keep all working controls free of dust. Occasionally you may see sparks through the ventilation slots. This is normal and will not damage your power tool.

If the supply cord is damaged, it must be replaced by the manufacturer, its service agent or similarly qualified persons in order to avoid a hazard.

Spare parts

Spare parts

Spanner	1
Auxiliary handle	1
Wheel guard for grinding	1
Wheel guard for cutting	1

Working hints

Working hints

1. Always start at no load to achieve maximum speed then start working.
2. Do not force the disc to work faster, reducing the disc's moving speed means longer working time.
3. Always work with a 15-30 degree angle between disc and workpiece. Larger angles will cut ridges into the workpiece and affect the surface finish. Move the angle grinder across and back and forth over the workpiece.
4. When using a cutting disc, never change the cutting angle. Otherwise you will stall the disc and angle grinder motor or break the disc. When cutting, only cut in the opposite direction to the disc rotation. If you cut in the same direction as the disc rotation, the disc may push itself out of the cut slot.
5. When cutting very hard material, best results can be achieved with a diamond disc.
6. When using a diamond disc, it will become very hot. If this happens, you will see a full ring of sparks around the rotating disc. Stop cutting and allow to cool at no load speed for 2-3 minutes.
7. Always ensure the workpiece is firmly held or clamped to prevent movement.

Technical data

Technical data table

Model number	MCEAG75
Rated voltage	230-240V~50Hz
Rated power	750W
No load speed	12000 /min
Disc size	115mm
Disc bore size	22.2mm
Spindle thread	M14
Protection class	□/II
Machine weight	2.01kg

Noise and vibration technical data

NOISE INFORMATION

A weighted sound pressure

L_{pA} : 93 dB(A) (grinding wheel)

L_{pA} : 95 dB(A) (cutting wheel)

A weighted sound power

L_{wA} : 101 dB(A) (grinding wheel)

L_{wA} : 103 dB(A) (cutting wheel)

K_{pA} & K_{wA} = 3.0 dB(A)

Wear ear protection.

VIBRATION INFORMATION

Vibration total values (triax vector sum) determined according to EN 62841:

Surface grinding or abrasive cutting off	Vibration emission value (Grinding wheel) : a_h = 5.55 m/s ² (Main handle) a_h = 5.80 m/s ² (Auxiliary handle)
	Vibration emission value (Cutting wheel) : a_h = 5.03 m/s ² (Main handle) a_h = 5.50 m/s ² (Auxiliary handle)
Uncertainty K = 1.5 m/s ²	

The declared vibration total value have been measured in accordance with a standard test method and may be used for comparing one tool with another.

The declared vibration total value may also be used in a preliminary assessment of exposure.

⚠ WARNING: The vibration emission value during actual use of the power tool can differ from the declared value depending on how the tool is used, based on the following examples and other variations on how the tool is used:

How the tool is used and the materials being cut.

The tool being in good condition and well maintained.

The use of the correct accessory for the tool and ensuring it is sharp and in good condition.


The tightness of the grip on the handles and if any anti vibration accessories are used.

And the tool is being used as intended by its design and these instructions.

This tool may cause hand-arm vibration syndrome if its use is not adequately managed.

Technical data

Noise and vibration technical data

 **WARNING:** To be accurate, an estimation of exposure level in the actual conditions of use should also take account of all parts of the operating cycle such as the times when the tool is switched off and when it is running idle but not actually doing the job. This may significantly reduce the exposure level over the total working period.

Helping to minimise your vibration exposure risk.

Maintain this tool in accordance with these instructions and keep well lubricated (where appropriate).


If the tool is to be used regularly then invest in anti vibration accessories.

Plan your work schedule to spread any high vibration tool use across a number of days.

Troubleshooting

General troubleshooting

The following chart lists problem symptoms, possible causes and corrective action, if your angle grinder does not operate properly. If these do not identify and correct the problem, contact your service agent.

 **WARNING:** Always switch the product off, disconnect it from power supply and let the product cool down before performing inspection, maintenance and cleaning work!

Problem	Possible cause	Solution
The tool is not operating.	1.1 Not connected to power supply. 1.2 Power cord or plug is defective.	1.1 Connect to power supply. 1.2 Contact customer service.
Power loss or weak performance	2.1 Incorrect or dull grinding disc 2.2 Blocked ventilation	2.1 Use the right, sharp disc. 2.2 Clean ventilation ports.
Grinder stops suddenly.	3.1 Overheating protection triggered 3.2 Faulty power switch	3.1 Let it cool down and restart. 3.2 Contact customer service.
Disc won't spin.	4.1 Incorrect disc installation 4.2 Spindle lock engaged	4.1 Reinstall the disc properly 4.2 Ensure spindle lock is released.
Grinder wheel wobbles or vibrates.	5.1 Incorrectly mounted disc	5.1 Reinstall and secure the disc.

Guarantee

Dear Customer,

In the unlikely event that your device develops a fault, please contact our Customer service department on the telephone number shown below (0345 605 2065).

1. These guarantee terms cover additional guarantee rights and do not affect your statutory warranty rights. Claims must be accompanied by Proof of Purchase. This must be in the form of a Sales receipt or Bank statement and must show that the product has been purchased within 2 years prior to the claim, from the retailer that it was originally sold to.
2. Our guarantee covers problems caused by material or manufacturing defects, and will result in the repair of these defects or replacement of the device with a like for like or similar article. Please note that our devices have not been designed for use in commercial, trade or industrial applications. Consequently, the guarantee is invalidated if the equipment is used in commercial, trade or industrial applications or for other equivalent activities.
3. The following are also excluded from our guarantee :
 - A. Faults due to accidents, customer misuse or unauthorized repairs
 - B. Failure due to lack of routine maintenance.
 - C. Failure as a result of not using the equipment in accordance with the manual and safety instructions
 - D. The adjustment of cables.
4. The guarantee is valid for a period of 2 years starting from the purchase date of the device. Guarantee claims should be submitted before the end of the guarantee period within two weeks of the defect being noticed. No guarantee claims will be accepted after the end of the guarantee period. The original guarantee period remains applicable to the device even if repairs are carried out or parts are replaced. In such cases, the work performed or parts fitted will not result in an extension of the guarantee period, and no new guarantee will become active for the work performed or parts fitted. This also applies when an on-site Service is used.
5. Please keep your sales receipt in a safe place. If it is covered by our guarantee, your device will either be repaired under the terms of the guarantee or we will send you a replacement device.