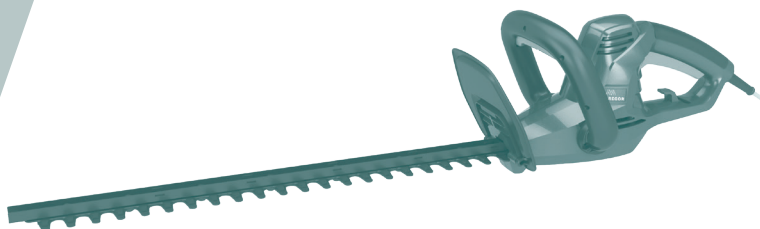


ORIGINAL INSTRUCTION MANUAL



McGregor 500/600W Hedge Trimmer

(Model: MEH5051P/MEH6060P)

Page 1 of 24

V1.5: 09/23

Important - Please read these instructions fully before starting assembly

These instructions contain important information that will help you get the best from your hedge trimmer, ensuring it is assembled correctly and safely. If you need help or have damaged or missing parts, call the Customer Helpline on 0345 605 2065

**AFTER SALES SUPPORT
0345 605 2065**

Contents

Safety information	3
In the box	12
Assembly.....	13
Preparation.....	13
Operation.....	15
Maintenance	17
Technical data.....	18
Troubleshooting	19
Environmental protection.....	19
Getting help.....	20
Guarantee.....	20

Produced in China for Argos Limited, London, EC1N 2HT, UK.
Argos (N.I.) Ltd., Forestside Shopping Centre, Upper Galwally,
Belfast, BT8 6FX, UK.

Safety information

Important - Please read these instructions fully before starting assembly

Warning symbols

The following warning symbols appear throughout this assembly manual and indicate the appropriate safety measures you should take when assembling and operating the hedge trimmer.



This symbol indicates there is a danger of serious personal injury or death if you do not observe the warning.



Read operator's manual



Do not expose to rain

General safety



WARNING!

Keep this assembly manual in a safe place following assembly for reference at a later date.

Always ensure anyone intending to operate this hedge trimmer is fully conversant with the contents of this assembly manual prior to assembling, maintaining or operating the hedge trimmer.

Perform assembly operations as described in this manual. Failure to observe this warning may lead to serious injury, death, or damage to the hedge trimmer.

Always take care when removing the packaging to prevent damage to you or to the hedge trimmer.



IMPORTANT! Before assembling the hedge trimmer, check all the parts indicated in the manual are in the box. Inspect all the parts for signs of damage. Do not Assemble the hedge trimmer if you observe any damaged components.

Safety information

Important - Please read these instructions fully before starting assembly

Personal safety



WARNING!

Only operate the hedge trimmer if you are wearing the correct Personal Protective Equipment (PPE) as described in the following warnings.

Warning symbols

The following warning symbols appear throughout this assembly manual and indicate the appropriate safety measures you should take when assembling and operating the hedge trimmer.



Read operator's manual



Wear ear protection



Wear eye protection



Wear dust mask



Do not expose to rain



Keep hands away from blade



Double insulation



Remove plug from the mains immediately if the cable is damaged or cut



Waste electrical products must not be disposed of with household waste. Please recycle where facilities exist. Check with your local authorities or retailer for recycling advice.



Conforms to relevant EU regulatory requirements



Conforms to relevant UK regulatory requirements

Safety information

Important - Please read these instructions fully before starting assembly

General power tool safety warnings



WARNING!

Read all safety warnings, instructions, illustrations and specifications provided with this power tool. *Failure to follow the warnings and instructions may result in electric shock, fire and/or serious injury.*

Save all warnings and instructions for future reference. *The term “power tool” in the warnings refers to your mains-operated (corded) power tool or battery-operated (cordless) power tool.*

1) Work area safety

- a) Keep work area clean and well lit.** *Cluttered or dark areas invite accidents.*
- b) Do not operate power tools in explosive atmospheres, such as in the presence of flammable liquids, gases or dust.** *Power tools create sparks which may ignite the dust or fumes.*
- c) Keep children and bystanders away while operating a power tool.** *Distractions can cause you to lose control.*

2) Electrical safety

- a) Power tool plugs must match the outlet. Never modify the plug in any way. Do not use any adapter plugs with earthed (grounded) power tools.** *Unmodified plugs and matching outlets will reduce risk of electric shock.*
- b) Avoid body contact with earthed or grounded surfaces, such as pipes, radiators, ranges and refrigerators.** *There is an increased risk of electric shock if your body is earthed or grounded.*

Safety information

Important - Please read these instructions fully before starting assembly

General power tool safety warnings

- c) **Do not expose power tools to rain or wet conditions.** *Water entering a power tool will increase the risk of electric shock.*
- d) **Do not abuse the cord. Never use the cord for carrying, pulling or unplugging the power tool. Keep cord away from heat, oil, sharp edges or moving parts.** *Damaged or entangled cords increase the risk of electric shock.*
- e) **When operating a power tool outdoors, use an extension cord suitable for outdoor use.** *Use of a cord suitable for outdoor use reduces the risk of electric shock.*
- f) **If operating a power tool in a damp location is unavoidable, use a residual current device (RCD) protected supply.** *Use of an RCD reduces the risk of electric shock.*
- 3) **Personal safety**
 - a) **Stay alert, watch what you are doing and use common sense when operating a power tool. Do not use a power tool while you are tired or under the influence of drugs, alcohol or medication.** *A moment of inattention while operating power tools may result in serious personal injury.*
 - b) **Use personal protective equipment. Always wear eye protection.** *Protective equipment such as dust mask, non-skid safety shoes, gloves, hard hat, or hearing protection used for appropriate conditions will reduce personal injuries.*
 - c) **Prevent unintentional starting. Ensure the switch is in the off-position before connecting to power source and/or battery pack, picking up or carrying the tool.** *Carrying power tools with your finger on the switch or energising power tools that have the switch on*

Customer helpline **0345 605 2065**

Safety information

Important - Please read these instructions fully before starting assembly

General power tool safety warnings

invites accidents.

- d) **Remove any adjusting key or wrench before turning the power tool on.** *A wrench or a key left attached to a rotating part of the power tool may result in personal injury.*
 - e) **Do not overreach. Keep proper footing and balance at all times.** *This enables better control of the power tool in unexpected situations.*
 - f) **Dress properly. Do not wear loose clothing or jewellery. Keep your hair, clothing and gloves away from moving parts.** *Loose clothes, jewellery or long hair can be caught in moving parts.*
 - g) **If devices are provided for the connection of dust extraction and collection facilities, ensure these are connected and properly used.** *Use of dust collection can reduce dust-related hazards.*
 - h) **Do not let familiarity gained from frequent use of tools allow you to become complacent and ignore tool safety principles.** *A careless action can cause severe injury within a fraction of a second.*
- 4) Power tool use and care**
- a) **Do not force the power tool. Use the correct power tool for your application.** *The correct power tool will do the job better and safer at the rate for which it was designed.*
 - b) **Do not use the power tool if the switch does not turn it on and off.** *Any power tool that cannot be controlled with the switch is dangerous and must be repaired.*
 - c) **Disconnect the plug from the power source and/or the battery pack from the power tool before making any adjustments, changing accessories, or storing power tools.** *Such preventive safety measures reduce the risk of starting the power tool accidentally.*

Safety information

Important - Please read these instructions fully before starting assembly

General power tool safety warnings

- d) **Store idle power tools out of the reach of children and do not allow persons unfamiliar with the power tool or these instructions to operate the power tool.**
Power tools are dangerous in the hands of untrained users.
- e) **Maintain power tools. Check for misalignment or binding of moving parts, breakage of parts and any other condition that may affect the power tool's operation. If damaged, have the power tool repaired before use.** *Many accidents are caused by poorly maintained power tools.*
- f) **Keep cutting tools sharp and clean.** *Properly maintained cutting tools with sharp cutting edges are less likely to bind and are easier to control.*
- g) **Use the power tool, accessories and tool bits etc. in accordance with these instructions, taking into account the working conditions and the work to be performed.** *Use of the power tool for operations different from those intended could result in a hazardous situation.*
- h) **Keep handles and grasping surfaces dry, clean and free from oil and grease.** *Slippery handles and grasping surfaces do not allow for safe handling and control of the tool in unexpected situations.*
- 5) **Service**
 - a) **Have your power tool serviced by a qualified repair person using only identical replacement parts.**
This will ensure that the safety of the power tool is maintained.

Safety information

Important - Please read these instructions fully before starting assembly

Hedge trimmer safety warnings

- a) Keep all parts of the body away from the blade. Do not remove cut material or hold material to be cut when blades are moving.** *Blades continue to move after the switch is turned off. A moment of inattention while operating the hedge trimmer may result in serious personal injury.*
- b) Carry the hedge trimmer by the handle with the blade stopped and taking care not to operate any power switch.** *Proper carrying of the hedge trimmer will decrease the risk of inadvertent starting and resultant personal injury from the blades.*
- c) When transporting or storing the hedge trimmer, always fit the blade cover.** *Proper handling of the hedge trimmer will decrease the risk of personal injury from the blades.*
- d) When clearing jammed material or servicing the unit, make sure all power switches are off and the power cord is disconnected.** *Unexpected actuation of the hedge trimmer while clearing jammed material or servicing may result in serious personal injury.*
- e) Hold the hedge trimmer by insulated gripping surfaces only, because the blade may contact hidden wiring or its own cord.** *Blades contacting a "live" wire may make exposed metal parts of the hedge trimmer "live" and could give the operator an electric shock.*
- f) Keep all power cords and cables away from cutting area.** *Power cords or cables may be hidden in hedges or bushes and can be accidentally cut by the blade.*
- g) Do not use the hedge trimmer in bad weather conditions, especially when there is a risk of lightning.** *This decreases the risk of being struck by lightning.*
- h) Check the hedges and bushes for foreign objects, e.g.**

Safety information

Important - Please read these instructions fully before starting assembly

Hedge trimmer safety warnings

wire fences and hidden wiring.

- i) Hold the hedge trimmer properly, e.g. with both hands if two handles are provided.**
- j) The hedge trimmer is intended to be used by the operator at ground level and not on ladders or any other unstable support.**
- k) Before operating the hedge trimmer, the user should make sure the locking device(s) of any moving elements (e.g. the extended shaft and pivoting element), if any, are in the locked position.**
- l) Recommendation for the use of a residual current device with a tripping current of 30 mA or less.**

Safety information

Important - Please read these instructions fully before starting assembly

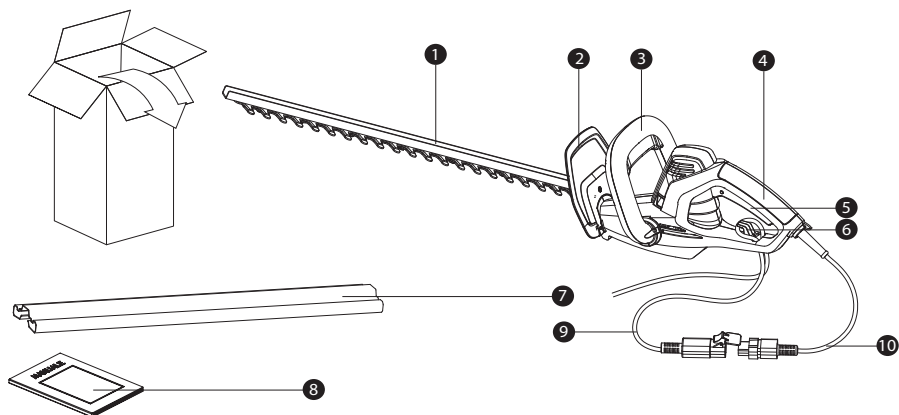
Maintenance and storage

- 1) Never use water to cleaning the unit.
- 2) Always clean the hedge trimmer immediately after use.
Brush the blade using a stiff nylon brush to remove any debris.
- 3) Always store the unit in a dry place.
- 4) Inspect the hedge trimmer before each use.
- 5) Have the unit professionally repaired if any damage occurs.
- 6) The blade rail should be cleaned and treated with fine lubricating oil after each use.
- 7) Use the blade sheath for transportation and storage.

In the box

Parts

- | | |
|-----------------------------------|----------------------|
| 1 Blade | 6 Cord hook |
| 2 Safety guard | 7 Blade sheath |
| 3 Front handle with safety switch | 8 Instruction manual |
| 4 Rear handle | 9 Cord set |
| 5 On/off switch | 10 Power cord |



Assembly

Assembling instructions

The hedge trimmer has been already Assemblyd, no further assembly required.

Preparation

Preparing instructions



Always take care when removing the packaging to prevent damage to you or to the hedge trimmer.



IMPORTANT! Before assembling the hedge trimmer, check all the parts indicated in the manual are in the box. Inspect all the parts for signs of damage. Do not Assembly the hedge trimmer if you observe any damaged components.



NOTE: Before using the tool, read the instruction book carefully.

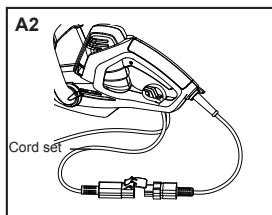
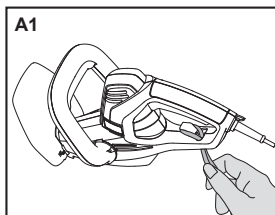
Remove all parts of the hedge trimmer from the box and carefully remove all packaging. Take care not to lose any instructions which may be attached to the tool, these provide important information which will be required while assembling the hedge trimmer.

WARNING! Take great care when doing this as the blade has a very sharp cutting edge .

1.CABLE STRAIN RELIEF (See Fig. A1, A2)

This product is designed with a cable hook that prevents the cord set from being pulled loose while using.

- Form a loop with the end of the cord set.
- Insert loop portion of cord set hook opening in the bottom of the rear handle and place over cable hook.
- Slowly pull loop against cable hook until the slack is removed.
- Connect the power cord to the socket of the cord set.



Preparation

Preparing instructions

 **WARNING!** Before using the tool, read the instruction book carefully.

INTENDED USE

The product is intended for trimming hedges, bushes and shrubs. Observe the technical data for the maximum cutting capacity. Do not cut branches exceeding the stated maximum capacity. This product is intended for private domestic use only, not for any commercial trade use. It must not be used for any purposes other than those described.

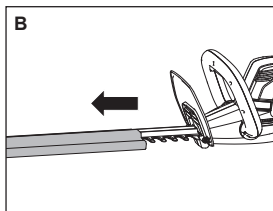
Operate

Operating instructions

1. STARTING AND STOPPING

BEFORE STARTING YOUR HEDGE TRIMMER

Remove blade sheath as illustrated in Fig B.



TO START YOUR HEDGE TRIMMER

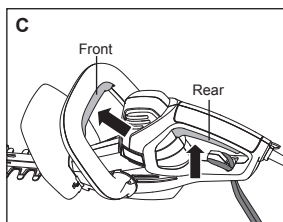
Depress the safety switch on front handle with one hand and the on/off switch on the rear handle with the other hand to turn on the hedge trimmer. The trimmer will stay on as long as the two switches are depressed. (See Fig C)

TO STOP YOUR HEDGE TRIMMER

Move Hedge trimmer away from cutting area before stopping.

To stop, release either on/off switch or safety switch.

⚠ WARNING: If any parts are missing, damaged or broken, do not operate your Hedge trimmer until all damaged parts have been replaced or repaired. Failure to do so could result in serious personal injury. **DO NOT USE WITHOUT HANDLE AND GUARD.**



Operate

Operating instructions

2. PAY ATTENTION PRIOR TO USING YOUR HEDGE TRIMMER

Inspect the area to be cut before each use, remove objects which can be thrown or become entangled in the cutting blades.

Always hold the Hedge trimmer with both hands and with the blade away from you before turning it on.

Always keep the power cord behind the Hedge trimmer when in use. Do not place it over the hedge that you are trimming where it may be cut by the blade.

When trimming new growth, use a wide sweeping action so that the stems are fed directly into the blade.

Allow the cutting blades to reach full speed before entering the material to be cut.

Always work in the direction going away from people and solid objects such as walls, large stones, trees, vehicles etc.

If the blade stalls, immediately stop the Hedge trimmer. Disconnect the hedge trimmer from the electrical outlet and clear the jammed debris from the cutting blade.

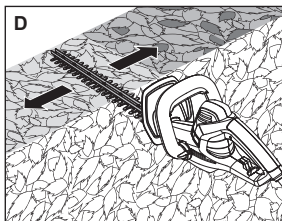
Wear gloves when trimming thorny or prickly growth.

Move the safety hedge trimmer to feed the branches directly into the blade cutting edges.

Do not try to cut stems that are too large to feed into the cutting blade.

TOP EDGING (See Fig D)

Use a wide sweeping motion. A slight downward tilt of the cutting blades in the direction of motion gives the best cutting results.

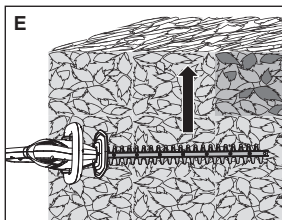


SIDE EDGING (See Fig E)

When trimming the sides of the hedge, begin at the bottom and cut upwards, tapering the hedge inward at the top. This shape will expose more of the hedge, resulting in a more uniform growth.

⚠ WARNING! Check cord sets before each use. If damaged replace immediately. Never use your tool with a damaged cord since touching the damaged area could cause electrical shock resulting in serious injury.

If the supply cord is damaged, it should be replaced by a local approved service centre.



Maintenance

Maintenance


WARNING:

If the supply cord is damaged, it must be replaced by the same cord provided by the manufacturer. Also replacement of cord has to be done by the manufacturer, or its service agent or similarly qualified persons in order to avoid a hazard.

CLEANING

Disconnect from electrical outlet. Using a soft brush-remove debris from all air intakes and cutting blade.

Wipe over surface of your Hedge trimmer with a dry cloth.

 **WARNING!** Never use water for cleaning your Hedge trimmer. Do not clean with chemicals, including petrol, or solvents as this can damage your hedge trimmer.

LUBRICATING THE CUTTING BLADE

For easier operation and longer life, lubricate the cutting blades before and after each use. Before lubricating, make sure your Hedge trimmer is disconnected from electrical outlet.

Apply the gear oil so that it runs between the two blades.

AT THE END OF THE CUTTING SEASON

Clean your Hedge trimmer thoroughly.

Check that all nuts and bolts are secure.

Visually inspect the Hedge trimmer for any worn or damaged parts.

TO STORE YOUR HEDGE TRIMMER

Ensure the blade sheath is fitted before storage.

Store in a secure, dry place out of the reach of children, and your trimmer can be protected from damage.

Do not place other objects on top of the machine.

Technical data

Technical data table

Model	GHT500G1	GHT600G1
Rated Voltage	230-240 V ~ 50 Hz	
Rated Power	500W	600W
Rated no-load speed	1800 /min	
Tooth gap	16 mm	
Cutting length	510mm	600 mm
Machine Weight	2.5kg	2.7kg
Protection degree	□/II	

Noise and technical date

GHT500G1

A weighted sound pressure

$$L_{pA} = 74.73 \text{ dB(A)}$$

$$K_{pA} = 0.23 \text{ dB (A)}$$

A weighted sound power

$$L_{wA} = 95 \text{ dB(A)}$$

GHT600G1

A weighted sound pressure

$$L_{pA} = 75.45 \text{ dB(A)}$$

$$K_{pA} = 1.91 \text{ dB (A)}$$

A weighted sound power

$$L_{wA} = 97.4 \text{ dB(A)}$$

Wear ear protection.



VIBRATION INFORMATION

Vibration total values (triax vector sum) determined according to EN 62841:

GHT500G1

Vibration emission value: $a_n = 2.1 \text{ m/s}^2$ Uncertainty $K = 1.5 \text{ m/s}^2$

GHT600G1

Vibration emission value: $a_n = 2.2 \text{ m/s}^2$ Uncertainty $K = 1.5 \text{ m/s}^2$

The declared vibration total value may be used for comparing one tool with another, and may also be used in a preliminary assessment of exposure.

⚠ WARNING: The vibration emission value during actual use of the power tool can differ from the declared value depending on the ways in which the tool is used dependant on the following examples and other variations on how the tool is used:

How the tool is used and the materials being cut or drilled.

The tool being in good condition and well maintained

Using the correct accessory for the tool and ensuring it is sharp and in good condition.

The tightness of the grip on the handles and if any anti vibration accessories are used.

And the tool is being used as intended by its design and these instructions.

This tool may cause hand-arm vibration syndrome if its use is not adequately managed

⚠ WARNING: To be accurate, an estimation of exposure level in the actual conditions of use should also take account of all parts of the operating cycle such as the times when the tool is switched off and when it is running idle but not actually doing the job. This may significantly reduce the exposure level over the total working period.

Helping to minimise your vibration exposure risk.

Maintain this tool in accordance with these instructions and keep well lubricated (where appropriate)

If the tool is to be used regularly then invest in anti vibration accessories.

Plan your work schedule to spread any high vibration tool use across a number of days.

Customer helpline 0345 605 2065

Troubleshooting

General troubleshooting

The following chart lists problem symptoms, possible causes and corrective action, if your electric hedge trimmer does not operate properly. If these do not identify and correct the problem, contact your service agent.

WARNING! Always switch the product off, disconnect it from power supply and let the product cool down before performing inspection, maintenance and cleaning work!

Problem	Possible Cause	Solution
Hedge trimmer does not operate	1.1 No power 1.2 Mains socket faulty 1.3 Cord set damaged 1.4 Fuse faulty	1.1 Check power 1.2 Check other socket, replace 1.3 Check cord, replace 1.4 Replace fuse
Hedge trimmer operates intermittently	2.1 Cord set damaged 2.2 Internal wiring damaged 2.3 On/Off switch defective	2.1 Check cord, replace 2.2 Contact Service Agent 2.3 Contact Service Agent
Motor runs but blades remain stationary	3. Internal fault	3. Contact Service Agent
Cutting blade hot	4.1 Cutting blade dull 4.2 Cutting blade has dents 4.3 Too much friction, due to lack of lubricant	4.1 Have blade sharpened 4.2 Have blade inspected/overhauled 4.3 Apply lubricant spray

Environmental protection



This product has been marked with a symbol relating to removing electric and electronic waste. This means that this product shall not be discarded with household waste but that it shall be returned to a collection system which conforms to the European Directive 2002/96/CE. It will then be recycled or dismantled in order to reduce the impact on the environment. Electric and electronic equipment can be hazardous for the environment and for human health since they contain hazardous substances.

Getting help

Customer helpline 0345 605 2065

Guarantee

Dear Customer,

In the unlikely event that your device develops a fault, please contact our Customer service department on the telephone number shown below.

1. These guarantee terms cover additional guarantee rights and do not affect your statutory warranty rights. Claims must be accompanied by Proof of Purchase. This must be in the form of a Sales receipt or Bank statement and must show that the product has been purchased within 2 years prior to the claim, from the retailer that it was originally sold to.
2. Our guarantee covers problems caused by material or manufacturing defects, and will result in the repair of these defects or replacement of the device with a like for like or similar article. Please note that our devices have not been designed for use in commercial, trade or industrial applications. Consequently, the guarantee is invalidated if the equipment is used in commercial, trade or industrial applications or for other equivalent activities.
3. The following are also excluded from our guarantee :
 - A. Faults due to accidents, customer misuse or unauthorized repairs
 - B. Failure due to lack of routine maintenance.
 - C. Failure as a result of not using the equipment in accordance with the manual and safety instructions
 - D. The adjustment of cables, or cutting blade.
4. The guarantee is valid for a period of 2 years starting from the purchase date of the device. Guarantee claims should be submitted before the end of the guarantee period within two weeks of the defect being noticed. No guarantee claims will be accepted after the end of the guarantee period. The original guarantee period remains applicable to the device even if repairs are carried out or parts are replaced. In such cases, the work performed or parts fitted will not result in an extension of the guarantee period, and no new guarantee will become active for the work performed or parts fitted. This also applies when an on-site Service is used.
5. Please keep your sales receipt in a safe place. If it is covered by our guarantee your device will either be repaired under the terms of guarantee or we will send you a replacement device. This device may be re-conditioned or like for like replacement .

