



D03AMT001-00
UK
Version 0

Quick Setup Guide

HL-L1240W / HL-L1242W / HL-L1242WXL

Read the *Product Safety Guide* first, then read this *Quick Setup Guide* for the correct installation procedure.
Not all models are available in all countries.



EN

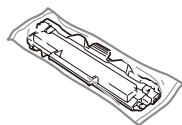
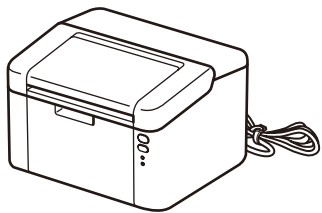


The latest manuals are available on the Brother support website:
support.brother.com/manuals

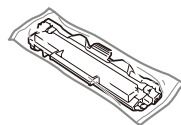


Unpack the machine and check the components

Remove the protective tape or film covering the machine and the supplies.



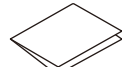
Toner Cartridge



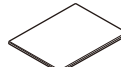
Toner Cartridge Replacement
(HL-L1242WXL only.
Save for later use.)



A5 Paper Long Edge Support



Quick Setup Guide



Product Safety Guide

NOTE:

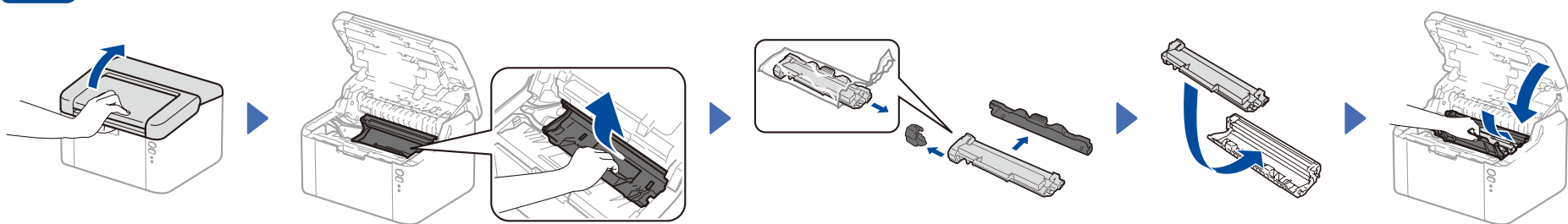
- The components included in the box may differ depending on your country.
- The available connection interfaces vary depending on the model.

USB cable

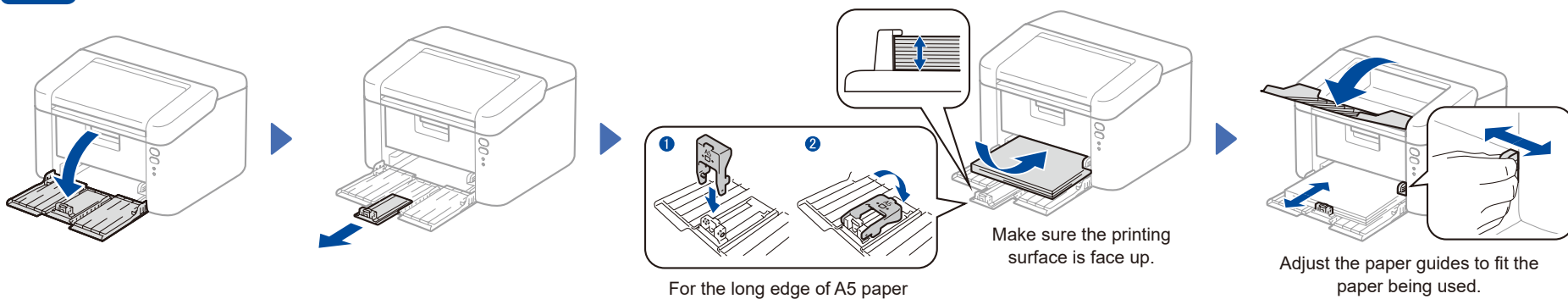
We recommend using a USB 2.0 cable (Type A/B) that is no more than 2 metres long.

- The screens and images in this *Quick Setup Guide* show the HL-L1242W.
- Brother aims to reduce waste and save both raw materials and the energy required to produce them.
Read more about our environmental work at www.brotherearth.com.
- Save all packing materials and the box in case you need to ship your machine.

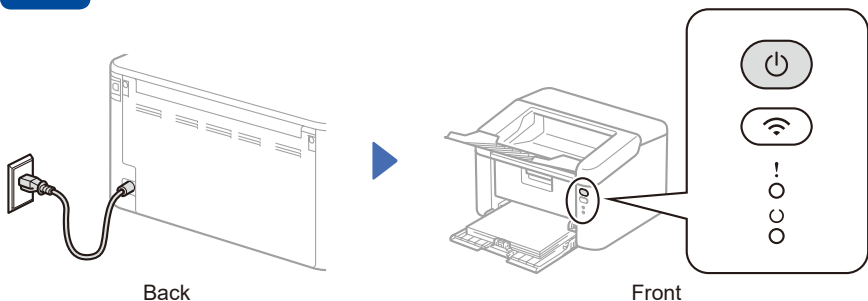
1 Remove the packing materials and install the toner cartridge



2 Load paper in the paper tray



3 Connect the power cord and turn the machine on



Printer LED Indications

Blinking: ☀ or 🌱 ON: ● OFF: ○

	Power Off	Ready Data Remaining	Sleep Deep Sleep	Warming Up Cooling Down	Receiving Data	Toner Low	Replace Toner	Paper Jam	Drum End Soon Replace Drum
!	○	○	○	○	○	☀	☀	☀☀	☀☀☀
⏻	○	●	● Dimmed	🌱 1 second interval	🌱 0.5 second interval	●	○	○	●

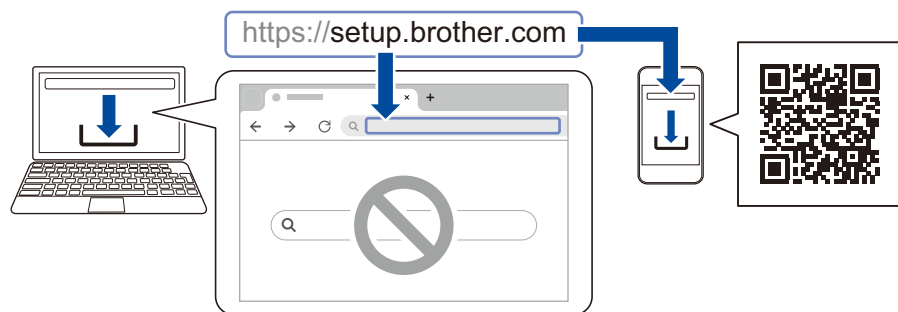


4 Connect your computer or mobile device to your machine

Follow these steps to complete the setup using one of the connection types available on your machine.

You can also print directly from your mobile devices using AirPrint or Mopria™ Print Service. For more information, see the *Online User's Guide*.

Visit setup.brother.com to download and install Brother software.



Follow the on-screen instructions and prompts.

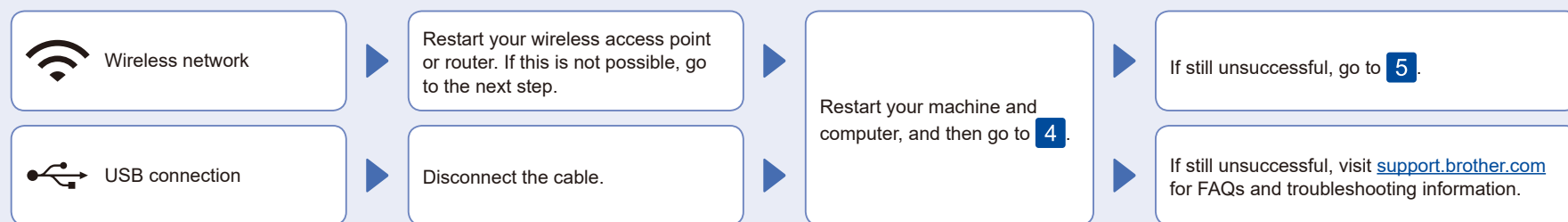
Setup Finished

You can now print using your machine.

Important Notice for Network Security:

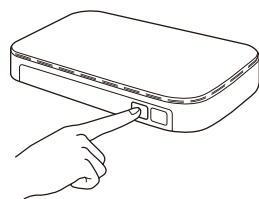
The default password to manage this machine's settings is located on the back of the machine and marked "Pwd". We recommend immediately changing the default password to protect your machine from unauthorised access.

Can't Connect? Check the following:

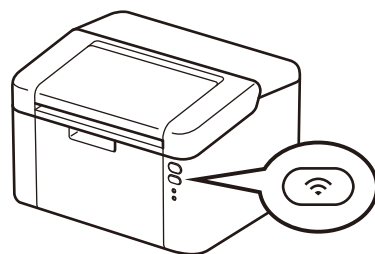


5 Manual wireless setup (Wireless models)

If the wireless setup is unsuccessful, set up the connection manually.



Press the WPS button on your wireless LAN access point or router.



Press and hold the Wi-Fi button on your machine for about 2 seconds. The Wi-Fi button will light up when connected.

Go to **4** to install software.

If the setup is unsuccessful, restart your Brother machine and your wireless access point or router, and repeat **5**.
If still unsuccessful, visit support.brother.com.