

# ***Shark***<sup>®</sup>

## **FlexBreeze TableMate**

### **FA150UK**

#### **OWNER'S GUIDE**

---



# IMPORTANT SAFETY INSTRUCTIONS

SUITABLE FOR OUTDOOR USE & HOUSEHOLD USE ONLY.



IPX5 RAIN RESISTANT (EXCLUDING THE REMOTE)

## ⚠ WARNING

TO REDUCE THE RISK OF FIRE, ELECTRIC SHOCK, OR INJURY: READ ALL THESE INSTRUCTIONS BEFORE USE.

1. This appliance is operated by a rechargeable battery. ONLY recharge the battery with the charger supplied with the unit, battery charger for use only with model GQ36-120300-ABO power supply Donguan Gangqi Electronic Co., Ltd, or with model AJJ3-1 from Anlian. A charger that may be suitable for one type of battery may create a risk of fire when used with another battery.
2. **DO NOT** attempt to destroy, remove, or disassemble the battery pack from the machine. **DO NOT** incinerate battery cells. Consult your local waste authority for information regarding available recycling and/or disposal options.
3. This appliance comes with a remote control which contains a coin battery. Dispose of batteries properly. Always keep batteries away from children (choke hazard). Even used batteries can cause injury.
4. To reduce the risk of an electric shock, connect only to an outlet provided with a Residual Current Device (RCD).
5. The fan should be used on a stable and level surface.
6. Never use this fan near pools, bathtubs, showers, basins, or other vessels containing water.
7. **DO NOT** operate any unit with a damaged power supply wire or battery charger. Discard the unit or return to an authorised a third party service facility for examination and/or repair.
8. **DO NOT** run cord under carpeting. **DO NOT** cover charge cord with throw rugs, runners, or similar coverings. **DO NOT** route charger cord under furniture or appliances. Keep charger cord away from high-traffic areas. Place charger in an area where the cord will not be tripped over.
9. If the charger cord is damaged, it should be replaced.
10. This appliance is not intended for use by anyone (including children) with reduced physical, sensory, or mental capabilities, or lack of experience and knowledge, unless they have been given supervision or instruction concerning use of the appliance by a person responsible for their safety.
11. Before every use, fully flush the hose out for at least one minute before connecting, to prevent stagnant water being misted.
12. Children should be supervised to ensure that they **DO NOT** play with the appliance.
13. Cleaning and user maintenance shall not be made by children without supervision.
14. Prior to cleaning or other maintenance, the appliance must be unplugged from the electrical outlet.
15. Only use Shark branded accessories.
16. **DO NOT** use if appliance is not working as it should, or has been dropped, damaged, left outdoors for extended periods of time in poor weather without the protective cover installed or dropped into water.
17. Turn off all controls before plugging in or unplugging the appliance.
18. Unplug from electrical outlet when not in use and before any maintenance or cleaning.
19. Hand wash exterior/hard plastic/non-electronic parts with water only. **DO NOT** immerse. Cleaning with chemicals could damage the unit.
20. **DO NOT** attempt to repair or adjust any electrical or mechanical functions of this appliance, as this may cause danger and void the warranty.

## READ AND SAVE THESE INSTRUCTIONS

©2025 SharkNinja Operating LLC. SHARK is a registered trademark in the United Kingdom of SHARKNINJA Operating LLC.  
FA150UK\_IB\_X7\_MP\_250227



**WARNING: Chemical Burn Hazard. Keep batteries away from children.**

Dispose of coin cell batteries according to local regulations. Even used batteries can cause injury. This product contains a lithium coin cell battery. If a new or used lithium coin cell battery is swallowed or enters the body, it can cause severe internal burns and can lead to death in as little as 2 hours. After changing batteries, always completely close and secure the battery compartment. If the battery compartment does not close securely, stop using the product, remove the battery, and keep it away from children. If you think a battery might have been swallowed or placed inside any part of the body, seek immediate medical attention.



**WARNING: Not suitable for use with solid-state speed control or a variable control switch.**

### LITHIUM BATTERY SAFETY WARNINGS ⚠ ⚠

LITHIUM BATTERIES STORE A LARGE AMOUNT OF ENERGY AND WILL VENT FIRE OR EXPLODE IF MISTREATED.

1. **DO NOT** DO ANY OF THE FOLLOWING TO THE BATTERY PACK:
  - a. Open
  - b. Drop
  - c. Short-circuit
  - d. Puncture
  - e. Incinerate
  - e. Expose to temperatures below 0°C and above 60°C
2. Keep battery pack dry.
3. Charge battery pack only according to its charger’s instructions.
4. Inspect battery pack before every use: **DO NOT** use or charge if damaged.

### BATTERY REMOVAL AND DISPOSAL

This product contains an integral lithium battery (not replaceable), and the remote control uses a lithium coin battery. When the remote battery no longer has a charge, it should be removed from the remote and recycled. **DO NOT** incinerate or compost the product with its integral battery or the remote battery. When your remote battery needs to be replaced, dispose of it or recycle it in accordance with local ordinances or regulations. In some areas, it is illegal to place spent lithium batteries in the rubbish bin or in a municipal solid waste stream. Return spent battery to an authorised recycling centre or to retailer for recycling. Contact your local recycling centre for information on where to drop off the spent battery. This appliance contains an integral battery that is non-replaceable. When the battery is at end of life, the appliance shall be properly disposed of.

### POWER SUPPLY SAFETY

1. Read and follow all instructions that are on the product or provided with the product.
2. **DO NOT** use an extension cord.
3. **DO NOT** use within 3 metres of pool and **DO NOT** use in a bathroom.
4. **WARNING:** Risk of Electric Shock. When used outdoors, install only to a covered Class A RCD protected receptacle that is weatherproof with the power unit connected to the receptacle. If one is not provided, contact a qualified electrician for proper installation. Ensure that the power unit and cord **DO NOT** interfere with closing the receptacle cover.



### KEEP OUT OF REACH OF CHILDREN

INGESTION HAZARD: This product contains a button battery. Swallowing can lead to chemical burns, perforation of soft tissue, and death. Severe burns can occur within 2 hours of ingestion. Seek medical attention immediately.



# IMPORTANT SAFETY INSTRUCTIONS

FAN ACCESSORIES

## SYMPTOMS FROM BATTERY INGESTION

### No obvious symptoms

Unfortunately, it is not obvious when a button or coin battery is stuck in a child's oesophagus (food pipe).

There are no specific symptoms associated with this. The child might:

- cough, gag or drool a lot;
- appear to have a stomach upset or a virus;
- be sick;
- point to their throat or stomach;
- have a pain in their abdomen, chest or throat;
- be tired or lethargic;
- be quieter or more clingy than usual or otherwise “not themselves”;
- lose their appetite or have a reduced appetite; and
- not want to eat solid food / be unable to eat solid food.

These sorts of symptoms vary or fluctuate, with the pain increasing and then subsiding.

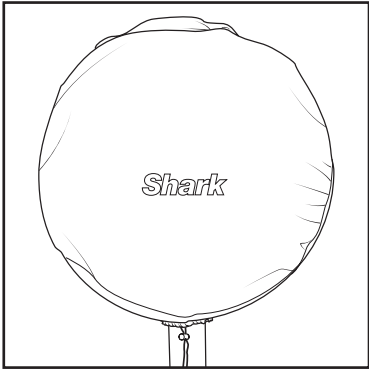
A specific symptom to button and coin battery ingestion is vomiting fresh (bright red) blood. If the child does this seek immediate medical help.

The lack of clear symptoms is why it is important to be vigilant with “flat” or spare button or coin batteries in the home and the products that contain them.

Different fan models come with different accessories. To purchase an accessory that was not included, go to [sharkclean.co.uk](https://sharkclean.co.uk)

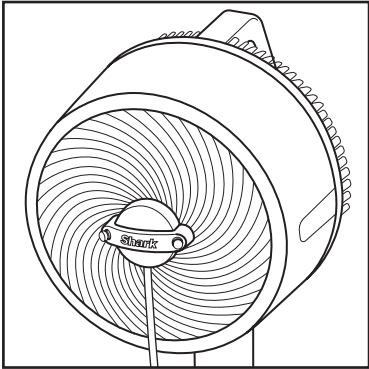
## OUTDOOR COVER

1. The fan cover is not a toy. Children should not play with it as it may become unsanitary during outdoor use.
2. **CHOKING HAZARD:** Children should not play with the cover as they could choke on the draw string.



## MISTING ACCESSORY

3. The mister is suitable for outdoor use only.
4. The mister output is not controlled by the fan power. The mister will continue to operate when fan is powered off.
5. **DO NOT** operate the mister using water pressure above 4.1 bar.
6. **DO NOT** operate the mister using warm or hot water. Only use cold or room temperature water.
7. **DO NOT** handle live electrical products in the misting stream.
8. Keep non waterproof electronic equipment and appliances out of the mister stream.
9. Children should be supervised to ensure that they DO NOT play with the mister accessory.
10. Before every use, fully flush the hose out for at least one minute before connecting, to prevent stagnant water being misted.
11. **WARNING CHOKING HAZARD:** Be conscience of the nozzle placement after removing when cleaning Ensure children do not have access to the nozzles.
12. The cleaning and user maintenance of the mister shall not be done by children without supervision.



## READ AND SAVE THESE INSTRUCTIONS

Shark FLEXBREEZE Product Information

According to:  
Commission Regulation (EU) 206/2012 implementing Directive 2009/125/EC of the European Parliament and of the Council with regard to eco-design requirements for air conditioners and comfort fans.

NOTE	DESCRIPTION	SYMBOL	VALUE	UNIT
	Maximum Fan Flow Rate	F	26.66	m <sup>3</sup> /min
	Fan Power Input	P	15.90	W
	Service Value	SV	1.68	(m3/min)/W
	Standby Power Consumption	$P_{SB}$	0.23	W
Table	Fan Sound Power Level	$L_{WA}$	58.73	dB(A)
Floor	Fan Sound Power Level	$L_{WA}$	57.53	dB(A)
	Maximum Air Velocity	c	4.012	m/s
	Measurement standard for service value	IEC 60879		

Shark FLEXBREEZE Fan Instructions

WHAT’S INCLUDED

Includes:

- Fan Head
- Remote
- Charger



Charger (Reference image only) Fan Head (Already assembled) Remote

Remote Pairing Instructions

Turn the unit on by pressing the power button on top of the fan head and check if the remote functions properly.  
If the remote is not functioning, try the following:

1. Check to ensure the battery saver paper is removed from the remote.
2. Try connecting the remote to the fan by pressing and holding the power button on the fan head for 5 seconds. While the LEDs are flashing, press the fan speed up button on the remote.



3. If the remote still doesn't work, then try replacing the batteries in the remote and repeat the connection process above.

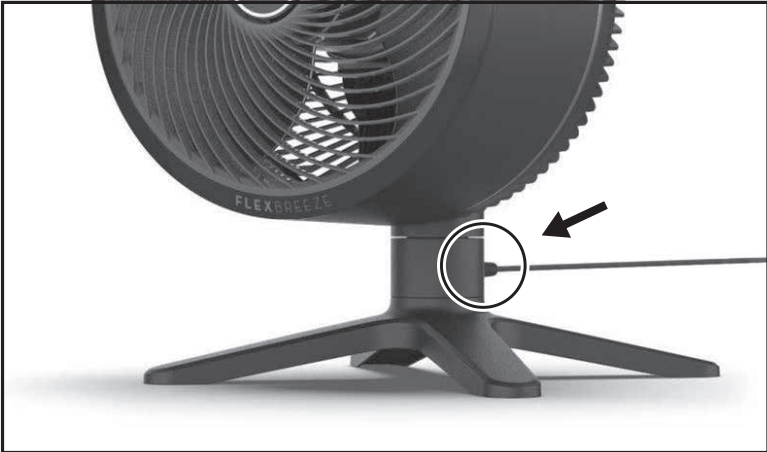
HOW TO USE YOUR FAN

Fan Speeds	1-5	Press  to switch between fan speeds 1-5. LED lights will appear to indicate the fan speed level.		
	Strong Breeze Mode		<b>(REMOTE ONLY)</b> Press and hold  for 3 seconds for strong breeze mode.	
	Gentle Breeze Mode		<b>(REMOTE ONLY)</b> Press and hold  for 3 seconds for gentle breeze mode.	
Oscillation Settings	1 - 45° angle	2 - 90° angle	3 - 180° angle	Press  to toggle between oscillation angles. LED lights will indicate which angle is selected.
	<b>(REMOTE ONLY)</b> Press the    on the remote to move the fan head to the left or right.			
Timer	Setting 1: 1 Hour	Setting 2: 2 Hours	Setting 3: 3 Hours	<b>(REMOTE ONLY)</b> Press  to switch between timer settings 1-5 hours. LED lights will appear to indicate how many hours the timer is set for.  LEDs will switch off after 20 seconds. To check how long is left on your timer, press  and the LED lights will appear.
	Setting 4: 4 Hours	Setting 5: 5 Hours		
Approximate Runtime without oscillation	<b>MAXIMUM CORDLESS RUNTIME:</b> 24 hours on fan speed 1. <b>AVERAGE CORDLESS RUNTIME:</b> 6 hours on fan speed 3. <b>MAXIMUM CORDLESS PERFORMANCE:</b> 1h 48 on fan speed 5. <b>PLUGGED IN:</b> Indefinite runtime; fan will charge while operating.			
Charge Time	<b>FROM 0% TO FULLY 100% BATTERY:</b> 5-6 hours			
Battery Indicator	70%-100%: green light 21%-50%: amber light 6%-20%: red light steady 5% and below: red light blinking			

DO NOT CHARGE OR USE IN THE RAIN

Shark FLEXBREEZE Fan Instructions

CHARGING THE FAN



To charge the fan, insert the small end of the **CHARGER** into the charging port.

**TIP:** The fan can be used when in corded and cordless modes.

BATTERY LIFE

SETTINGS	APPROX. RUNTIME	SETTINGS	APPROX. RUNTIME
Fan Speed 1	24 hours	Fan Speed 4	3 hours
Fan Speed 1 + Oscillation	12 hours	Fan Speed 4 + Oscillation	2 hours and 30 minutes
Fan Speed 2	14 hours	Fan Speed 5	1 hour 48 minutes
Fan Speed 2 + Oscillation	8 hours	Fan Speed 5 + Oscillation	1 hour and 40 minutes
Fan Speed 3	6 hours	Gentle Breeze	12 hours and 20 minutes
Fan Speed 3 + Oscillation	4 hours and 30 minutes	Gentle Breeze + Oscillation	6 hours and 50 minutes
		Strong breeze	2 hours and 55 minutes
		Strong breeze + Oscillation	2 hours and 20 minutes

Shark FLEXBREEZE Fan Instructions

STORAGE

Storage	Instructions
Short term storage indoors (<24 hours)	Carefully place the fan in the desired storage location. Ensure it is out of reach of children and pets.
Short term storage outdoors (<24 hours)	Place the fan in the desired storage location. Ensure it is out of reach of children and pets. If there is inclement weather, it is recommended to bring your fan indoors.
Long term storage indoors (>24 hours)	Carefully place the fan in the desired storage location. Ensure it is out of reach of children and pets.
Long term storage outdoors (>24 hours)	Store the fan indoors when not in use for long periods of time. Ensure it is stored out of reach of children and pets.

Shark FLEXBREEZE Fan Instructions

SETTING ADJUSTMENT

- When the fan is unplugged and drawing power from the battery, the remote will enter OFF mode after 24 hours of no use to preserve battery life. When in OFF mode, the remote cannot be used to power on the fan. The fan will have to be powered on using the buttons on the top of the fan head.
- The fan head LEDs will only remain illuminated for 20 seconds after a setting adjustment is made, before turning off to save battery.
- For information on how to activate or deactivate **LOCK MODE** for fan maintenance, please see the ‘maintenance’ section of this manual.
- Remote may be less effective when used outside.

POWER ON/OFF



To turn the fan on or off, press the **POWER** button on **REMOTE** or **USER INTERFACE** on the fan head.

SETTINGS	DISPLAY
ON	<p>LED animation will play once (LEDs from will turn on from left to right, then turn off from right to left)</p>
OFF	<p>LEDs will turn off</p>

FAN SPEEDS



Changing the **FAN SPEED** will increase or decrease the airflow of the fan. There are 5 fan speed settings, plus two more modes called *Strong Breeze Mode* and *Gentle Breeze Mode*. To increase/decrease the fan speed, press the up/down arrow on the **REMOTE**. To do so on the fan head **USER INTERFACE**, press the fan icon to cycle through the various fan speeds.



SPEED	DISPLAY	BEST FOR
1		Quietest operation
2		Moderate cooling
3		Balance of noise level and fan power
4		Air circulation
5		Highest power cooling









Shark FLEXBREEZE Fan Instructions

TIMER

If you don't want to leave your fan constantly on, but don't want to think about it, use the timer setting (**remote only**). You can choose between timer settings 1-5 hours.

To activate timer, press  on your remote. LED lights will appear to indicate how many hours the timer is set for. LEDs will switch off after 20 seconds. To check how long is left on your timer, press  and the LED lights will appear.





SPEED	DISPLAY	TIME
1		1 Hours
2		2 Hours
3		3 Hours
4		4 Hours
5		5 Hours




OSCILLATION

Choose between 3 oscillation angles to best suit your needs.

To change the oscillation angle, press the up/down arrow on the **REMOTE**. To do so on the fan head **USER INTERFACE**, press the oscillation icon to cycle through the various angle options.

To turn off oscillation, press the down arrow or oscillation icon until no LEDs are illuminated.


  


DISPLAY	ANGLE	BEST FOR
	45°	Circulating air in a small area, 1-2 people
	90°	Circulating air in a moderate area, 3-4 people
	180°	Circulating air in a large area, 5+ people

HORIZONTAL ANGLE ADJUST

Use this feature to change the horizontal angle of the fan at a distance. This feature is only accessible using the **REMOTE**.

To adjust the angle of the fan using the remote, press the left/right arrows on the **REMOTE**.



DISPLAY	SETTING	BEST FOR
N/A	-	Adjusting the fan angle toward or away from you at a distance.

Shark FLEXBREEZE Fan Instructions

VERTICAL ADJUSTMENT

To adjust the vertical height of your fan head, use the handle to manually tilt the head up or down. The Shark Fan has a vertical range of 55 degrees.



Fan Head tilted up



Fan Head titled down

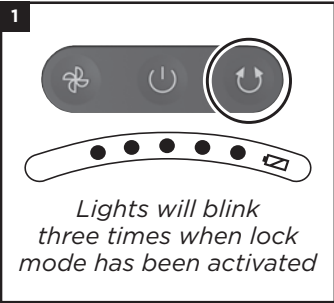
TROUBLESHOOTING AND FREQUENTLY ASKED QUESTIONS

General Use	Why is the remote not working?	Ensure the remote is pointed directly at the front UI/ LEDs and try again. The remote will enter IDLE MODE after it has not been used for 24 hours. When in IDLE MODE, the remote cannot be used to power on the fan. The fan will have to be powered on using the fan head user interface. To turn off IDLE MODE, press and hold the power button on the fan head for 5 seconds, then press the right fan speed button on the remote while the LEDs on the fan head are flashing.If the remote does not work after IDLE MODE has been deactivated, replace the remote battery.
	Why are my remote AND UI buttons not working?	Ensure that LOCK MODE is not on. LOCK MODE is a feature to completely deactivate your fan to allow you to safely perform unit maintenance. To deactivate LOCK MODE, hold down the oscillation button on the unit UI for 8 seconds until LEDs flash three times. See Maintenance section for more information.
	Can I leave the fan outdoors?	This fan is rain resistant and will not be damaged by light rain. However, it is not able to withstand heavy rain or water submersion. It is recommended to bring the fan indoors when not in use. Your fan is IPX4 rain resistant (excluding the remote).
	Why is the fan rattling?	Ensure that the fan blade cap is fully installed before operating the fan. Please see the ‘maintenance’ section of this manual for more details.
	The second LED and the battery LED (in amber) are flashing on and off – what is wrong?	This error state indicates an issue with the voltage of the charger. Please be sure to only use the provided Shark charging cable and power supply.
Maintenance	Why do I have to activate lock mode before maintenance?	Since the Shark FlexBreeze Fan can be used cordlessly, there is a risk of the fan turning on when it is not plugged in. To avoid accidental use while providing maintenance, LOCK MODE will prevent the fan from powering on while maintenance is being performed and the blades are exposed.
	How often should I clean the fan?	It is recommended to maintain the fan every 6 months or as needed. See Maintenance section for more information.
Accessories	How often should I clean the misting accessory?	It is recommended to clean the misting accessory every 12 months or as needed. Please note: the hardness of your water source will impact the frequency at which the misting accessory will need to be maintained. See Maintenance section for more information.
	Why is my mister not working effectively/ not producing mist?	To work properly, the mister must have regular maintenance performed. See page 15 for more information.

MAINTENANCE

It is recommended to maintain the fan every 6 months or as needed. If grille screw, bolt or hex key have been lost, please see page 12 for hardware specifications to see what type of hardware is needed to replace each missing part.

- **LOCK MODE** must be activated prior to performing maintenance.
- This will temporarily block all fan functions until deactivated. Activating lock mode prevents any risk of the fan turning on by mistake during maintenance when the fan blades are exposed.



Turn on lock mode before performing maintenance for safety. To activate, hold down the **OSCILLATION** icon on the fan head user interface for 8 seconds until LEDs flash three times.



Use a screwdriver to loosen the screw at the bottom of the **FAN GRILLE**.



Rotate the **FAN GRILLE** counter-clockwise to remove from the fan head. Set grille aside.



With one hand securing the fan blades, use the other hand to rotate the **FAN BLADE CAP** clockwise to remove from the shaft. Set aside.



Gently pull to remove the **FAN BLADES**. Set aside.



Carefully replace the **FAN BLADE** onto the center shaft.



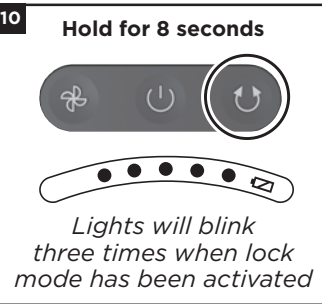
With one hand securing the fan blades, use the other hand to rotate the **FAN BLADE CAP** counterclockwise to fasten to the shaft.



Rotate the **FAN GRILLE** clockwise to fasten to the fan head.



Place the fan upright on a flat, level surface. Use a screwdriver to replace and tighten the screw at the bottom of the **FAN GRILLE**.

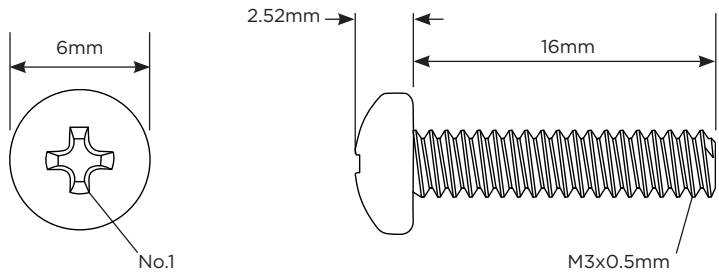


To deactivate lock mode to resume normal fan use, hold down the **OSCILLATION** icon on the fan head user interface for 8 seconds.

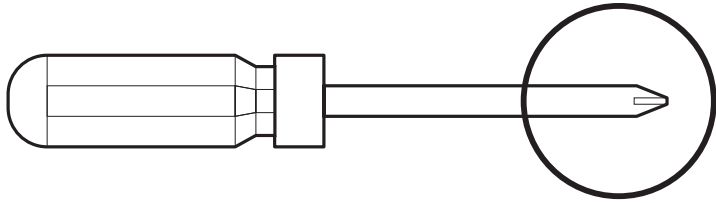
Shark FLEXBREEZE Fan Instructions

HARDWARE SPECS

Grille Screw For securing the grille to the fan	
Drive Type	Phillips
Thread Size / Pitch	M3 x 0.5mm
Length	16mm



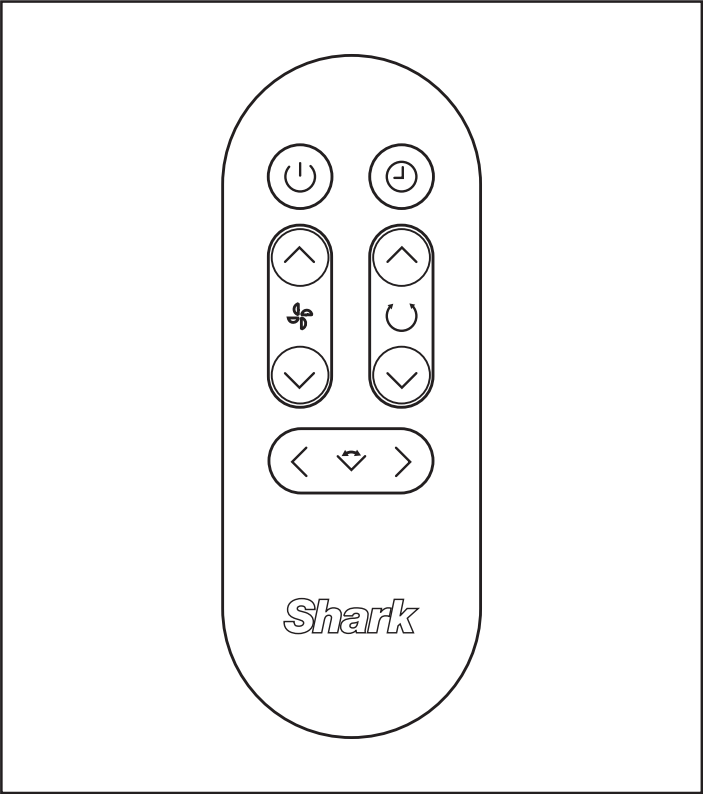
Screwdriver For driving the screw	
Drive Type	Phillips
Size	No. 1



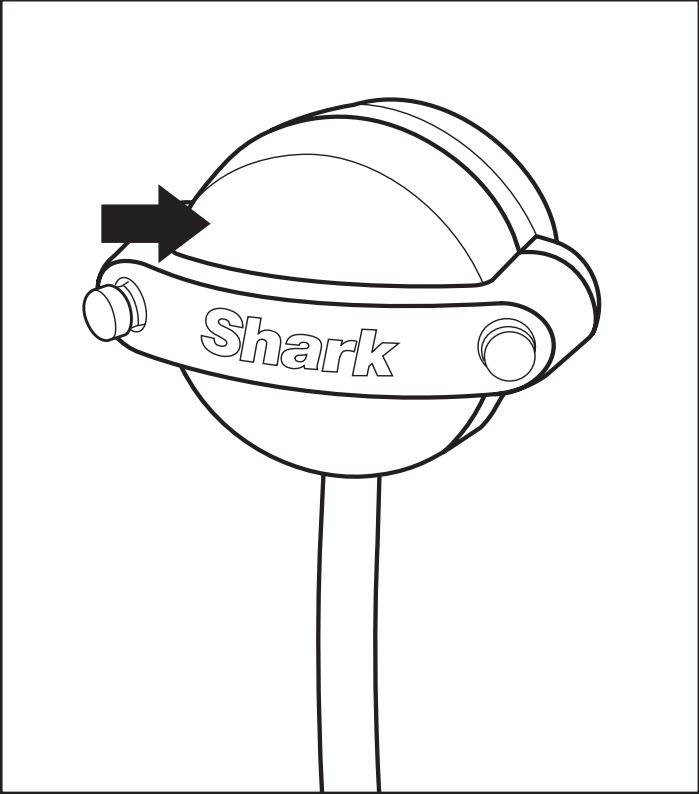
Shark FLEXBREEZE Fan Instructions

ACCESSORIES

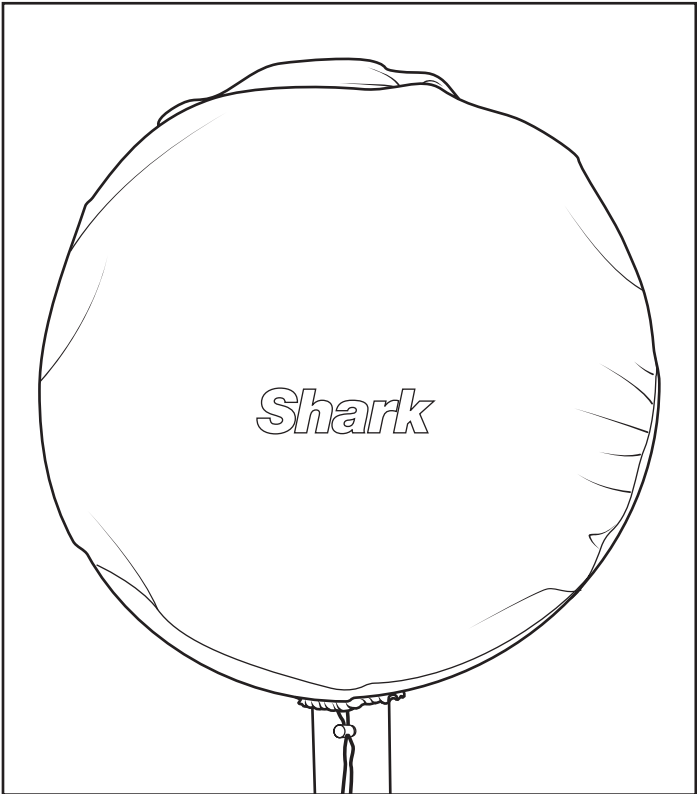
Different fan models come with different accessories. To purchase an accessory that was not included, go to [sharkclean.co.uk](http://sharkclean.co.uk)



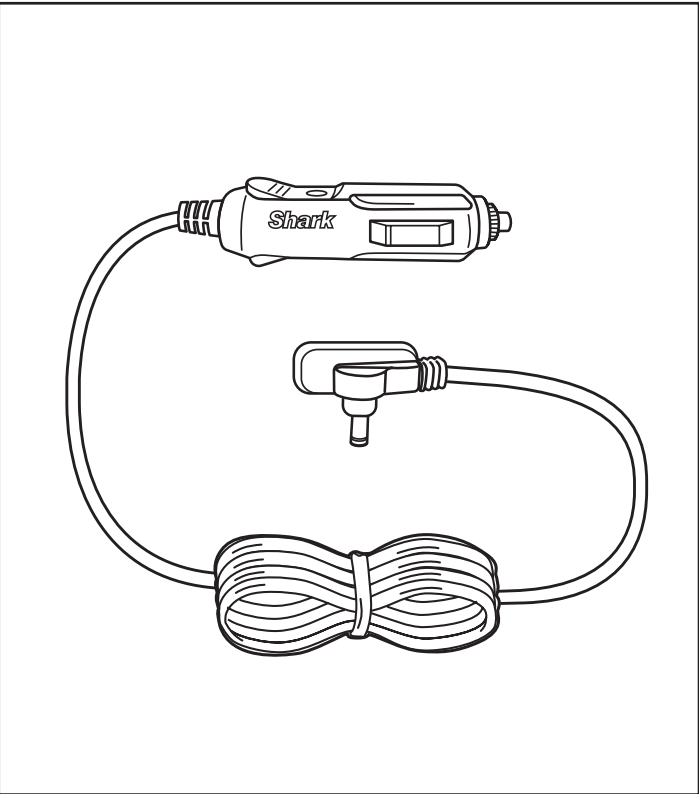
**Remote Control**  
Use the remote control to operate your fan from a distance.



**Mister**  
Connect the misting accessory to the front grille to product a fine mist. For more instructions on how to use, please see the 'misting accessory instructions.'



**Fan Cover**  
Protect your fan from damage and dust. For more instructions on how to use, please see the 'fan cover accessory instructions.'



**Car Charger**  
Charge your fan on the go with the car charger accessory. For more instructions on how to use, please see the 'car charger accessory instructions.'



# Shark FLEXBREEZE Fan Instructions

## FAN COVER

Different fan models come with different accessories. To purchase an accessory that was not included, go to [sharkclean.co.uk](http://sharkclean.co.uk)

### ⚠️ IMPORTANT SAFETY INSTRUCTIONS

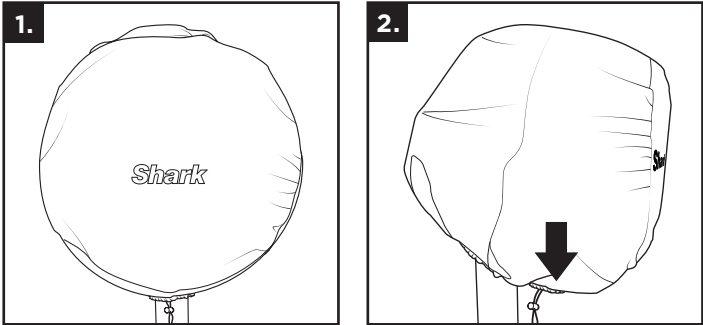
**READ ALL INSTRUCTIONS BEFORE USE**

The fan cover is not a toy. Children should not play with it as it may become unsanitary during outdoor use.

**CHOKING HAZARD:** Children should not play with the cover as they could choke on the draw string.

### INSTRUCTIONS FOR USE:

1. Position the cover over fan head, then slide it on until the fan is completely covered.
2. Cinch the drawstring on the bottom of the cover to secure it in place.
3. The cover will protect the fan from dust and damage from light. The fan cover does not guarantee that the product can be left outdoors for an extended time.



## CAR CHARGER

Different fan models come with different accessories. To purchase an accessory that was not included, go to [sharkclean.co.uk](http://sharkclean.co.uk)

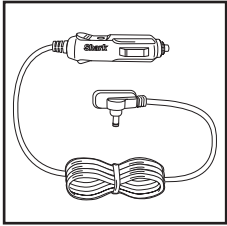
### ⚠️ IMPORTANT SAFETY INSTRUCTIONS

**READ ALL INSTRUCTIONS BEFORE USE**

#### 1. SAVE THESE INSTRUCTIONS.

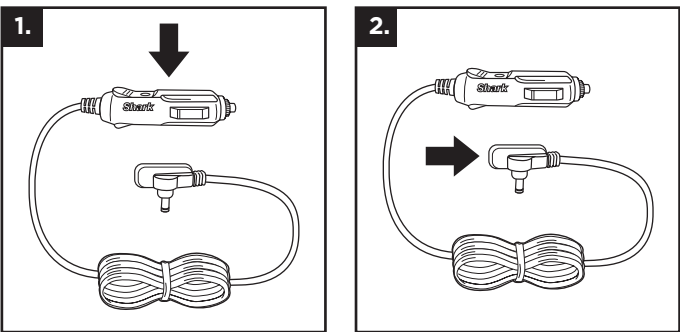
This appliance is operated by a rechargeable battery. ONLY recharge the battery with the charger supplied with the unit, battery charger for use only with model GQ36-120300-ABO power supply Donguan Gangqi Electronic Co., Ltd, or with model AJJ3-1 from Anlian. A charger that may be suitable for one type of battery may create a risk of fire when used with another battery.

2. Before using this battery charger, read all instructions and cautionary markings on the battery charger, battery, and product using battery.
3. **CAUTION:** To reduce risk of injury, charge only the provided rechargeable battery. Other types of batteries may burst, causing injury to persons and damage.
4. **DO NOT** expose charger to rain, moisture, or snow.
5. Use of an attachment not recommended or sold by the battery charger manufacturer may result in a risk of fire, electric shock, or injury to persons.
6. To reduce risk of damage to cigarette lighter connector and cord, pull by cigarette lighter connector rather than cord when disconnecting charger.
7. To reduce risk of electric shock, unplug charger before attempting any maintenance or cleaning. Turning off controls will not reduce this risk.
8. **DO NOT** operate charger with damaged cord or cigarette lighter connector. Replace it immediately.
9. The car charger may be wiped clean with a damp cloth once removed from the power socket. Allow car charger to fully dry prior to use.



### INSTRUCTIONS FOR USE:

1. Firmly insert the larger end of the car charger into a 12-volt outlet in your vehicle.
2. Connect the small end of the car charger to the charging port.



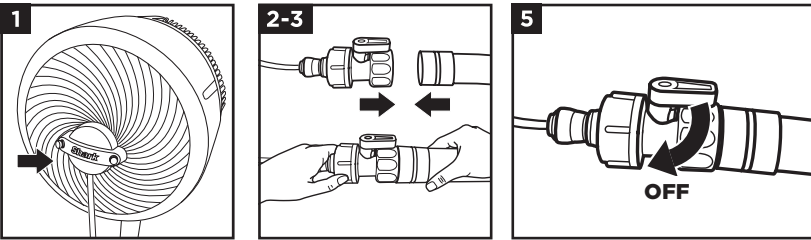
# Shark FLEXBREEZE Fan Instructions

## MISTING ACCESSORY

Different fan models come with different accessories. To purchase an accessory that was not included, go to [sharkclean.co.uk](http://sharkclean.co.uk)

### INSTRUCTIONS FOR USE:

1. Carefully align the misting accessory with the circle in the center of the fan grill, and push it in to install. Do not use excessive force.
2. Screw the end of the misting accessory into the nozzle of a standard garden hose.
3. Turn on the hose to create mist.
4. To adjust the amount of mist, increase or decrease the fan speed, or adjust the water pressure from the hose. Higher water pressure or fan speed will mean more mist.
5. The valve is open when the mister accessory is taken out of the packaging. Rotate the valve clockwise to stop the flow of water, as shown in the diagram.



If your mister becomes less effective or stops working, follow the steps listed in “INSTRUCTIONS FOR MAINTENANCE”. Do NOT twist nozzles unless they are being removed for cleaning

### INSTRUCTIONS FOR MAINTENANCE:

**FOR BEST RESULTS, CLEAN THE MISTING ACCESSORY ONCE A YEAR, OR AS NEEDED. USING HARDER WATER WILL REQUIRE MORE FREQUENT CLEANING.**

1. Unscrew the misting accessory from the water source, then pull the other end off the fan grill.
2. Place the accessory on a flat surface and carefully remove each brass nozzle, one at a time. **CAUTION:** Residual pressure may remain in the misting accessory.
3. To remove a nozzle, twist it counterclockwise. Do not use a wrench or any other tool. **WARNING: CHOKING HAZARD.** Keep nozzles out of the reach of children.
4. To flush the misting system, once the nozzles are all removed, connect the accessory to a garden hose or other outdoor water source. Aim the accessory away from yourself or anyone else, then turn on the water and run it through the system for 30 seconds to flush out any debris.
5. Soak the nozzles in a solution of undiluted distilled white vinegar (5% acetic acid by volume) to loosen debris that may be clogging or restricting the nozzle. **DO NOT** soak the nozzles for more than 2 hours.
6. After soaking the nozzles in the solution, rinse them thoroughly with water.
7. Carefully reinstall each nozzle by twisting clockwise until you feel resistance.

### ⚠️ IMPORTANT SAFETY INSTRUCTIONS

**READ ALL INSTRUCTIONS BEFORE USE**

1. The misting accessory is suitable for **OUTDOOR USE ONLY**.
2. The misting accessory will continue to operate when the fan is powered off. Turn off the water source to turn off the accessory.
3. **DO NOT** operate the misting accessory using water pressure above typical household pressure, 4.1 bar.
4. **DO NOT** use warm or hot water. Only use cold or room temperature water.
5. **DO NOT** handle live electrical products while in range of the misting stream.
6. Keep non-waterproof electronic equipment and appliances out of the misting stream.
7. Children should be supervised to ensure that they **DO NOT** play with the misting accessory.
8. **WARNING: CHOKING HAZARD.** Always keep nozzles and any other small parts out of the reach of children.
9. Cleaning and user maintenance of the misting accessory shall not be done by children without supervision.
10. Before every use, fully flush the hose out for at least one minute before connecting, to prevent stagnant water being misted.

**READ AND SAVE THESE INSTRUCTIONS**

If your mister becomes less effective or stops working even after following maintenance instructions, go to [www.sharkclean.co.uk](http://www.sharkclean.co.uk) to order replacement nozzles



# Shark FLEXBREEZE Fan Instructions

## MANUFACTURER'S GUARANTEE

When a consumer buys a product in the United Kingdom, they get the benefit of legal rights relating to the quality of the product (your "legal rights"). You can enforce your legal rights against your retailer, including Shark if you bought your Shark appliance from [sharkclean.co.uk](http://sharkclean.co.uk). However, at Shark we are so confident about the quality of our products that we give the owner an additional, free parts and labour manufacturer's guarantee of up to 2 years.

A household appliance like a Shark Fan appliance constitutes a sizeable investment. Your new machine needs to work properly for as long as possible. The guarantee it comes with is an important consideration - and reflects how much confidence the manufacturer has in its product and manufacturing quality.

The manufacturer's guarantee does not affect your legal rights.

### How long are new Shark machines guaranteed for?

Our manufacturer's guarantee lasts for one year from the date of purchase as standard, or for two years if you register your purchase with us within 28 days. There is information on how to register below.

### How do I register my Shark guarantee?

If you have purchased your Shark Fan appliance directly from [sharkclean.co.uk](http://sharkclean.co.uk) your guarantee is registered automatically. If you bought it from anywhere else, you can register your guarantee online within 28 days of purchase.

- To register online, please visit [www.sharkclean.co.uk/register-guarantee](http://www.sharkclean.co.uk/register-guarantee) or scan the QR code in your instruction manual.
- Keep a note of the date you purchased the machine.

### IMPORTANT:

- **Keep your receipt** if you bought your Shark Fan appliance from anywhere except [sharkclean.co.uk](http://sharkclean.co.uk). You will need it to claim under your guarantee.
- The free Shark guarantee only applies in the UK.

### What are the benefits of registering my free Shark guarantee?

When you register your guarantee, you will get an extra year of cover. We'll also have your details to hand if we ever need to get in touch. If you further agree to receive communications from us, you can also receive tips and advice on how to get the best out of your Shark Fan appliance and hear the latest news about new Shark technology and launches.

What is covered by the free Shark guarantee?

Repair or replacement (at Shark's option) of your Shark machine, including all parts and labour.

### What is not covered by the free Shark guarantee?

- Normal wear and tear.
- Accidental damage or faults caused by negligent use or care, misuse, neglect, careless operation or handling of the Shark appliance which is not in accordance with the Shark Operating Manual supplied with your machine.
- Damage caused by use of the Shark appliance for anything other than normal domestic household purposes.
- Damage caused by use of parts not assembled or installed in accordance with the operating instructions.
- Damage caused by use of parts and accessories which are not Shark Genuine Components
- Faulty installation (except where installed by Shark).
- Repairs or alterations carried out by parties other than Shark or its agents.

### How can I claim under the free Shark guarantee?

Contact our customer service helpline on 0800 862 0453. For service hours please visit our website under 'Contact Us'. It's free to call, and you'll be put straight through to a Shark representative. You'll also find online support at <https://support.sharkclean.co.uk/>.

The Shark representative will go through some troubleshooting with you, and if we conclude that the item has failed, we will send you a replacement part or a returns label to send the defective item back to us free of charge. When you have delivered the defective product to us, we will send you a replacement.

Please remember that the item will need to be boxed when you return it to us, which can be any suitable box; it does not have to be the original packaging.

### Where can I buy genuine Shark spares and accessories?

Shark spares and accessories are developed by the same engineers who developed your Shark Fan appliance. You'll find a full range of Shark spares, replacement parts and accessories for all Shark machines at [www.sharkclean.co.uk](http://www.sharkclean.co.uk). Please remember that damage caused by the use of non-Shark spares may not be covered under your guarantee.

### PLEASE READ CAREFULLY AND KEEP FOR FUTURE REFERENCE.

This Instruction Guide is designed to help you get a complete understanding of your new Shark Fan.

**SharkNinja Europe Ltd, 1st/2nd Floor  
Building 3150, Thorpe Park, Century Way,  
Leeds, England, LS15 8ZB UK  
+44 (0)800 862 0453  
[www.sharkclean.co.uk](http://www.sharkclean.co.uk)**

**SharkNinja Germany GmbH,  
Rotfeder-Ring 9,  
60327 Frankfurt am Main,  
Germany  
[www.sharkclean.eu](http://www.sharkclean.eu)**

Illustrations may differ from actual product. We are constantly striving to improve our products; therefore the specifications contained herein are subject to change without notice.

© 2025 SharkNinja Operating LLC. SHARK is a registered trademark in the United Kingdom of SharkNinja Operating LLC.

PHILLIPS is a registered trademark of Phillips Screw Company.



This marking indicates that this product should not be disposed with other household wastes. To prevent possible harm to the environment or human health from uncontrolled waste disposal, recycle it responsibly to promote the sustainable reuse of material sources. To return your used device, please use the return and collection systems or contact the retailer where this product was purchased. They can take this product for environmentally safe recycling.

