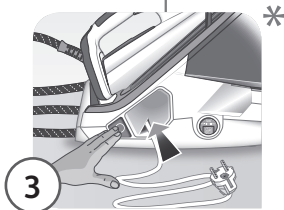
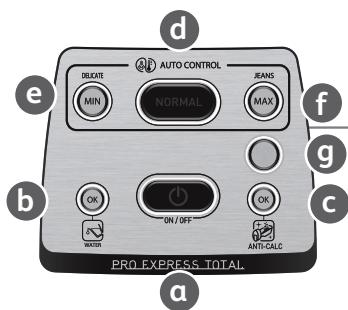
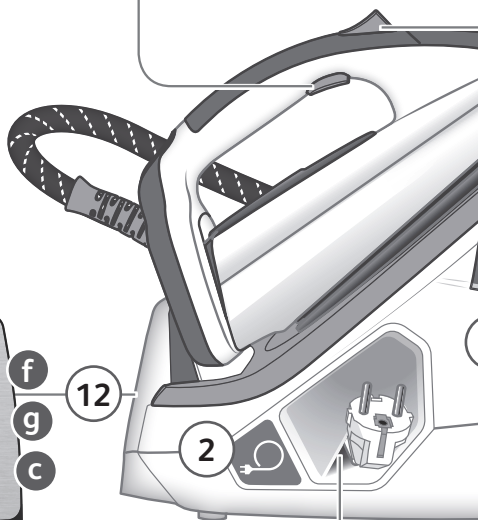


Tefal®

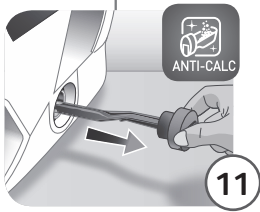
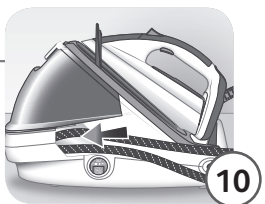
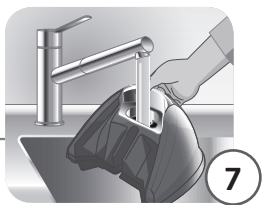
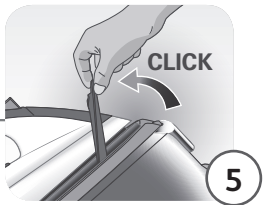
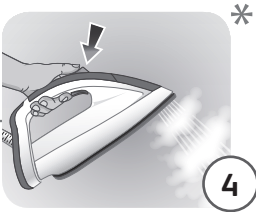
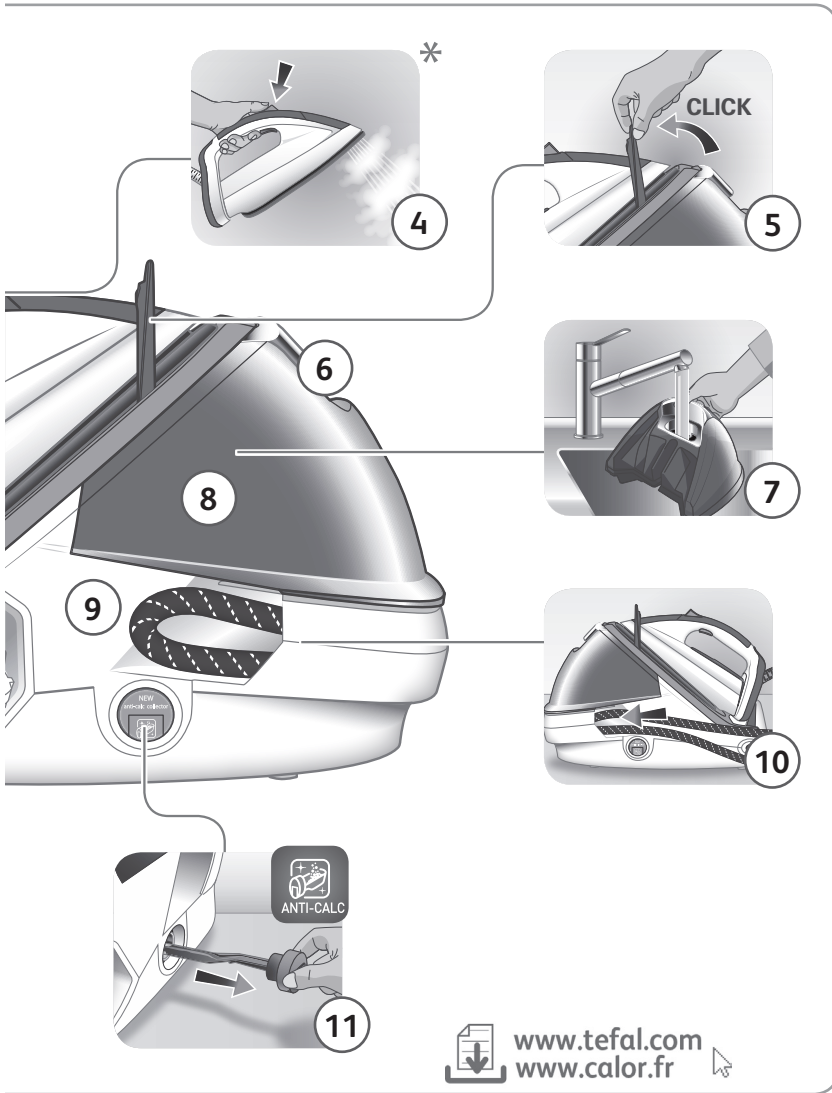
Pro Express Control



www.tefal.com

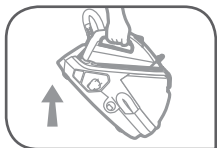


* Depending on model



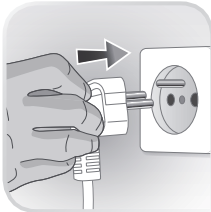
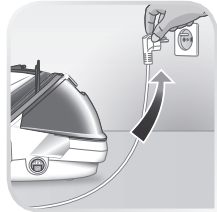
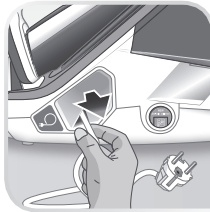
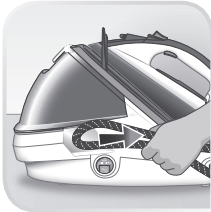
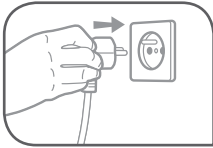


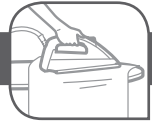
1.





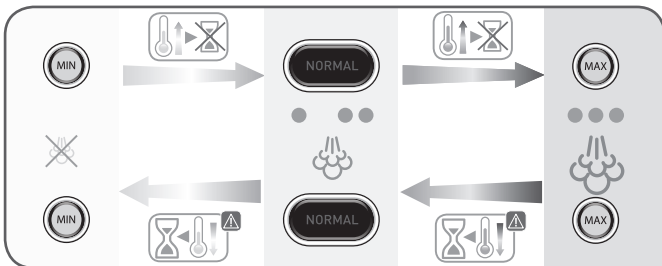
1.



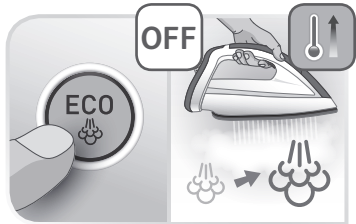
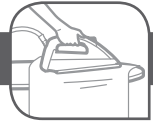


2.

ON

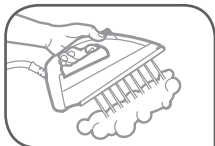


2.





2.

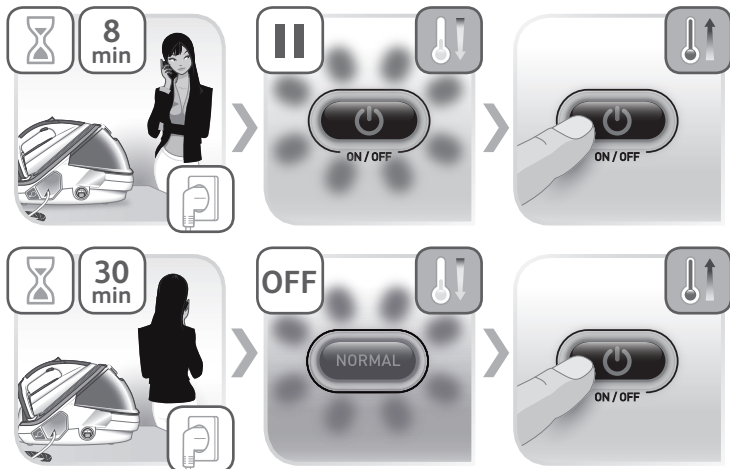


* Depending on model

2.

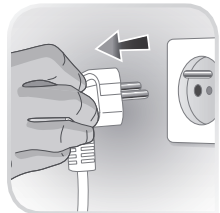
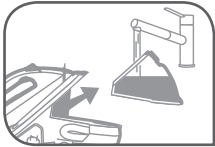
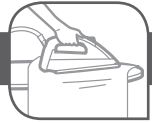


AUTO OFF*

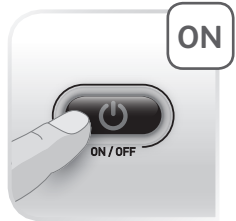
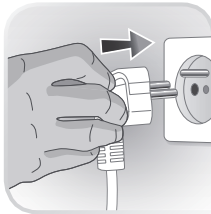
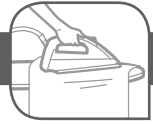


* Depending on model

2.

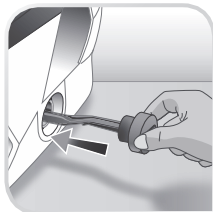
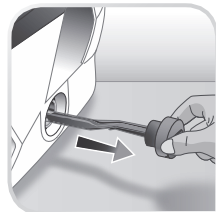
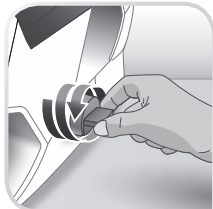
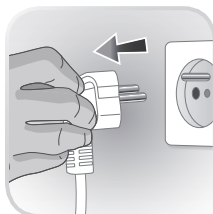
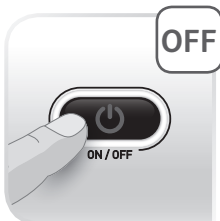


2.

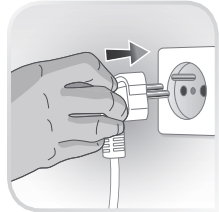
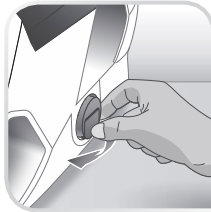




3.



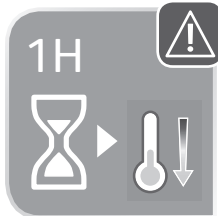
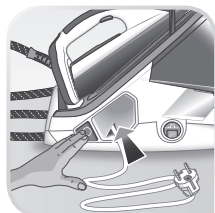
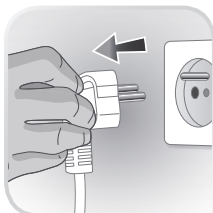
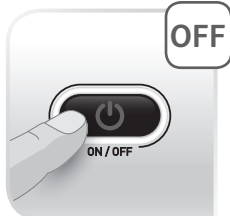
3.





3.

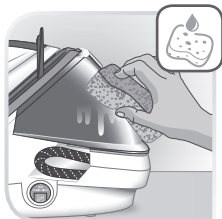
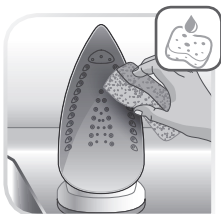
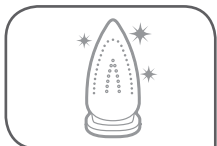
STOP



* Depending on model



3.



Important recommendations

Safety instructions

- Please read these instructions carefully before first use. This appliance is designed for indoor and domestic household use only. Any commercial use, inappropriate use or failure to comply with the instructions, the manufacturer accepts no responsibility and the guarantee will not apply.
- Never unplug the appliance by pulling the power cord. Always unplug your appliance:
 - before filling the water tank or rinsing the boiler,
 - before cleaning the appliance,
 - after each use,
- The appliance must be used and placed on a flat, stable, heat & water resistant surface. Do not place the base unit on a soft ironing board cover or any other soft surface. When you place the iron on the iron rest, make sure that the surface on which you place it is stable.
- This appliance is not intended to be used by persons (including children) with reduced or impaired physical, sensory or mental capabilities or persons lacking appropriate knowledge or experience, unless a person responsible for their safety provides either supervision or appropriate instructions concerning use of the appliance prior to its use.
- Children should be supervised to ensure they do not play with the appliance.
- Accessories, consumables and end user replaceable parts must be only purchased from Tefal or an Approved Service Centre.

- This appliance may be used by children aged 8 or over and persons lacking appropriate knowledge or experience or persons with reduced or impaired physical, sensory or mental capabilities provided that they have been thoroughly instructed regarding use of the appliance, are supervised, and understand the risks involved. Children shall not play with the appliance. Cleaning and user maintenance shall not be made by children without supervision. Keep the iron and its cord out of reach of children less than 8 years of age when its is energized or cooling down.
-  The surfaces of your appliance can reach very high temperatures when functioning, which may cause burns. Do not touch the hot surfaces of the appliance (accessible metal parts and plastic parts adjacent to the metallic parts).
- Never leave the appliance unattended when it is connected to the mains. Before storing the appliance, once it is unplugged, please wait until it has cooled down (around 1 hour).
- Do not use any descaling products (vinegar, industrial descaling products, etc.) to rinse the boiler: they may damage the appliance.
- Before rinsing the boiler/rinsing the anti-scale valve (depending on the model), wait until the appliance is completely cold and has been unplugged for at least 2 hours before unscrewing the boiler rinse cap/ the scale collector cover.
- Be careful: if the boiler cap or the boiler rinse cap (depending on the model), is dropped or severely knocked, have it replaced by an Approved Service Centre, as it may be damaged.
- When rinsing the boiler, never fill it directly from the tap.

- The boiler cap must not be opened during use.
- The appliance must not be used if it has been dropped, if it has any visible damage, if it leaks, or if it functions abnormally in any way. Do not attempt to dismantle your appliance: have it examined at an Approved Service Centre to avoid any danger.
- Check the electrical power and steam cords for signs of wear or damage prior to use. If the electrical power cord or the steam cord is damaged, it must be replaced at an Approved Service Centre to avoid any danger.
- The appliance will not work without the limescale collector (depending on model).
- For your safety, this appliance conforms to all applicable regulations (Low Voltage Directive, Electromagnetic Compatibility, Environment, etc).
- Your steam generator iron is an electrical appliance: it must be used under normal conditions of use. It is designed for domestic use only.
- It is equipped with 2 safety systems:
 - a pressure release valve designed to avoid excessive pressure. In the event of malfunction, the valve releases excess steam.
 - a thermal fuse to avoid overheating.
- Check that your power supply voltage corresponds to that shown on the appliance (alternating current only). Any error in plugging in your appliance may cause irreversible damage and invalidate the guarantee.
- The appliance is to be connected to a socket-outlet having an earthing contact.
- Given the diverse standards in effect, if the appliance is used in a country other than that in which it is purchased, have it checked by an Approved Service Agent.
- Do not use an extension lead. If you accept liability for doing so, only use an extension lead which is in good condition, has a plug with an earth connection and is suited to the power rating of the appliance.
- Completely unwind the power cord before plugging into an earthed socket.
- Do not leave the power cord close to or in contact with sources of heat or sharp edges.
- The sole plate of your iron and the iron rest on the base unit can reach extremely high temperatures, and can cause burns: do not touch them. Never touch the electrical power cords with the sole plate of the iron.
- Always use a vented/mesh ironing board and be careful of hot steam when ironing close to the edges of the board.
- Your appliance emits steam, which can cause burns. Always handle the iron with care, especially when ironing vertically. Never direct the steam towards people or animals.
- Never immerse your steam generator iron in water or any other liquid. Never place it under a running tap.

**PLEASE RETAIN THIS INSTRUCTION
BOOKLET FOR FUTURE REFERENCE**

PLEASE REFER TO SAFETY INSTRUCTIONS AT THE BEGINNING OF THIS BOOKLET BEFORE USING YOUR APPLIANCE

Description

1. Steam control button
2. Power cord outlet button (depending on model)
3. Power cord storage space (depending on model)
4. Power Zone button
5. Locking system
6. Handle for removing and replacing the detachable water tank
7. 1.8 L water tank
8. Boiler (in the base unit)
9. Steam cord
10. Sliding storage space for steam cord
11. Anti Calc Collector
12. Control panel
 - a. «ON-OFF» button with light
 - b. «Water tank empty» light and «OK» button
 - c. «Anti-Calc» light and «OK» button
 - d. «**NORMAL**» button
 - e. «**MIN** (DELICATES)» button
 - f. «**MAX** (JEANS)» button
 - g. «ECO» button

Locking system*

Your steam generator is fitted with a retaining hoop to hold the iron onto the base with a locked position for easy transport and storage:

- Locking. • Unlocking.

To transport your steam generator using the handle of the iron:

- Put the iron on the steam generator iron rest and raise the retaining hoop over the iron until it locks into place (audible click).
- Hold the iron by the handle to transport your steam generator.

Preparation

What water may be used?

- **Tap water:**

Your appliance has been designed to function using untreated tap water. If your water is very hard, we recommend you use a mix of 50% untreated tap water and 50% distilled water available in hardware stores.

- **Types of water not to use:**

Heat concentrates the elements contained in water during evaporation. The types of water listed below may contain organic waste, mineral or chemical elements that can cause spitting, brown staining or premature wear of the appliance: water from clothes dryers, scented or softened water, water from refrigerators, batteries, air conditioners, rain water, boiled, filtered or bottled water. These types of water should not be used in your TEFAL iron. Also only use distilled water as advised above.

Always remember:

Never use rainwater or water containing additives (like starch, fragrance or water from domestic appliances). Such additives can affect the steam properties and at high temperature, form deposits in the steam generator chamber which are likely to stain your washing.

Filling the water tank

- 1 Unplugged the appliance and remove the detachable water tank using the handle (located at the front of the steam generator), fill it with tap water without exceeding the MAX level.
- 2 Push it back into its housing until you hear a "click".

Switch the steam generator on

- Place the steam generator on a flat, stable, horizontal surface that is heat resistant
- Always ensure that the base unit is positioned close enough to the ironing surface to avoid straining and wear of the steam cord.
- Completely unwind the power cord and take the steam cord out of its storage space.
- Plug your steam generator into an earthed socket.
- Press the "ON-OFF" button.
- The "ON-OFF" button light remains flashing while the appliance is warming up.
- When you switch on the appliance the **NORMAL button light flashes** while the iron is warming up.

NOTE: If you wish to begin ironing delicate fabrics first, press the "MIN" button straightaway before the iron has reached the "normal" temperature setting as this will be too hot.

The first time the appliance is used, there may be some fumes and smell but this is not harmful. They will not affect use and will disappear rapidly.

- The MIN(DELICATES)/ NORMAL/ MAX(JEANS) buttons control the temperature and steam combinations that are suitable for different types of fabrics. They may be selected at any time.
- When the light of the selected button MIN(DELICATES)/ NORMAL/ MAX(JEANS) remains lit (after around 2 minutes) the steam generator is ready for use.

Operating the control panel

- The light of the selected button MIN(DELICATES)/ NORMAL / MAX(JEANS) flashes while the appliance is warming up.
- When the red «Water tank empty» light is flashing the water tank is empty. Fill the water tank and press the «OK» button for the light to switch off. See paragraph «Filling the water tank during use».
- When the orange «Anti-calc» light is flashing : maintenance is required, see paragraph «Maintenance and cleaning».
- Your steam generator comes with an automatic shut-off system which activates after approximately 8 minutes without use. Only the blue light of the «ON-OFF» button is flashing: the steam generator is on standby. Press the «ON-OFF» button or the steam shot button to start ironing again. See paragraph «AUTO-OFF» System.

Use



Steam ironing

- We recommend that you use a mesh type ironing board to allow steam to pass through the garments for better ironing results and also to prevent steam venting sideways.
- To obtain steam, press the steam control button under the iron handle. The steam will stop when you release the button.
- After approximately one minute, and regularly while it is being used, your steam generator's electric pump injects water into the boiler. It makes a noise but this is quite normal.
- If you are using starch, always spray it onto the reverse side of the fabric to be ironed.

Do not iron over zips, studs or other hard or sharp objects which may damage the soleplate. Do not place the iron on a metal support. When taking a break from ironing, always place the iron on the iron rest plate of the unit. It is equipped with non-slip pads and has been designed to withstand high temperatures.

Smart Technology Auto control

Your steam generator is fitted with SMART TECHNOLOGY AUTO CONTROL electronic regulation which gives you a choice of three optimum temperature and steam combinations.

| Settings | Recommended use | Labelling | Examples |
|---------------------------|--|---|--|
| NORMAL | Best for all standard linen |  | Cotton, wool*, silk, polyester, cashmere, mohair, viscose and synthetic/cotton mixes. |
| MAX (Jeans) | The most effective for thick or difficult to iron fabrics |  | Linen, thick cotton, jeans (dark colours) |
| MIN (Delicates) | Very gentle, for the most delicate items and sensitive colours | | Acetate, elastane, polyamide, acrylic and synthetic mixes. <i>Note: do not use steam to iron acrylic or modacrylic fabrics.</i> |

- Start with the fabrics to be ironed at a low temperature and finish with those that need higher temperature.
- If you are in doubt about the type of fabric an item of clothing is made from, check the label.
- When you select a higher temperature, you can continue to iron provided that you are not ironing a more delicate fabric that requires a lower temperature. If you select a button to reduce the temperature you should wait until the blue iron light has stopped flashing before continuing to iron.

*If you are ironing woollen garments, press repeatedly on the steam shot button without placing the iron on the garment. This will avoid it becoming shiny.



Warning, fabrics with the symbol are not suitable for ironing.

ECO MIN MODE: The ECOmin function reduces energy consumption. Press the ECO button to change to ECO mode and press the same button again to exit this mode.

During use if you have not used the steam function for a few minutes, press the steam control button several times in a row. Holding the iron away from your laundry. This will remove the cold water from the steam circuit.

Dry ironing

- Do not press the steam control button under the iron handle.

Vertical steam ironing

Recommendations: for fabrics other than linen or cotton, hold the iron a few centimetres from the garment to avoid burning the fabric.

- Hang the garment on a coat hanger and hold the fabric slightly taut with one hand.
- **As steam is very hot: never attempt to remove creases from a garment while it is being worn, always hang garments on a coat hanger.**
- Holding the iron in a vertical position tilted slightly forwards, press repeatedly on the steam control button (underneath the iron handle) moving the iron from top to bottom.

Power Zone Function

- Your appliance includes the Power Zone function: concentrated steam shot at the tip of the soleplate, to be used in particular to target stubborn creases, detailing and zones that are difficult to access.
- To use this function, press the Power Zone button on top of the iron as often as necessary

Steam boost function

- Your appliance includes the Steam boost: automatic sequential steam for effortless use. To be used in particular for thick fabrics.
- To obtain this function, press the steam control button under the handle three times in quick succession.

Refilling the tank during use

- When the red «Tank empty» light is flashing, there is no more steam. The water tank is empty.
 1. Remove the detachable water tank using the handle (located at the front of the steam generator) and fill it without exceeding the MAX level.
 2. Push it back into its housing until you hear a «click».
 3. Press the «OK» button located on the control panel until the light goes out to continue ironing.

Maintenance and cleaning

Cleaning your steam generator

Ultraglass soleplate (depending on model):

- While the soleplate is still warm, clean it with a damp non-metallic pad.
Your steam iron is fitted with a Gliss/Glide Protect™ Autoclean soleplate (depending on model):
- Its exclusive active coating allows it to eliminate any impurities that may be regularly generated during normal conditions of use.
- Ironing with an unsuitable program could nonetheless leave traces that require manual cleaning. In this case, we recommend using a soft damp cloth on the soleplate while it is still warm to avoid damaging the coating.

Warning! Using an abrasive pad will damage the soleplate's autoclean coating

- Do not use detergent or descaling products for cleaning the soleplate base-unit.
- Never hold the iron or the base unit under the tap.
- Regularly clean the soleplate with a damp, non-metallic washing up pad.
- Clean the plastic parts of the appliance occasionally with a soft cloth.

Easy descaling of your steam generator

Before cleaning, ensure your steam generator is unplugged and that the soleplate and the iron have cooled down.

To extend the life of your steam generator and avoid scale on your ironing, your steam generator is equipped with a built-in scale collector. This collector, located in the boiler tank, automatically removes the scale that forms inside.

Operation:

- An orange «anti-calc» light located on the control panel starts flashing to tell you that the anti-calc collector needs rinsing.

Important: This operation must not be carried out unless the steam generator has been unplugged for at least two hours and has cooled down completely. To carry out this operation, the steam generator must be close to a sink as water may come out of the boiler tank when it is opened.

- Once the steam generator has completely cooled down, lift the tab.
- Fully unscrew the collector - and pull it out of the base unit - it contains the scale that has built up in the boiler tank.
- To clean the collector, simply rinse it under running water to remove any scale it contains.
- You can soak the collector rod in white vinegar (available from hardware stores) or lemon juice for a few hours to remove any stubborn scale stuck to the rod.

- Place the collector in its housing by screwing it in completely to ensure it is watertight but do not overtighten it.
- Put the tab back in place.
- The next time you use the generator hold down the «OK» button for a few seconds to turn off the orange light.

In addition to this regular maintenance, it is advisable to rinse the boiler tank out completely every 6 months or after approximately 25 uses, whichever is the sooner.

- Check that the steam generator is cold and has been unplugged for at least 2 hours.
- Place the steam generator on the edge of your sink and stand the iron upright.
- Remove the collector cap and unscrew the Anti-calc collector and remove it from the base unit.
- Hold your steam generator in an inclined position. Use a jug to fill the boiler tank with 1/4 litre of untreated tap water.

Shake the base unit gently for a few seconds and then empty it completely into the sink.

- Place the collector in its housing by screwing it in completely to ensure it is watertight.
- Put the tab back in place.

Next time you use your appliance, press the «OK» button located below the control panel until the orange «Anti-Calc» light goes out.

«AUTO-OFF» System

- For your safety, the steam generator is fitted with an «AUTO-OFF» monitoring system, which is activated automatically after approximately 8 minutes without use.
- Only the «ON-OFF» button flashes to indicate that the appliance is on standby.
- To reactivate the steam generator:
 - Press the «ON-OFF» button.
 - Wait for the «ON-OFF» button light to stop flashing before starting your ironing again.
- For your safety, after approximately 30 minutes of non-use, the «AUTO-OFF» system switches off your steam generator. To start your ironing again, press the «ON-OFF» button.

Storing the steam generator

- Place the iron on the steam generator iron rest.
- Switch your steam generator off by pressing the «ON-OFF» button and unplug the appliance.
- Raise the locking system over the iron until the protection system locks into place (audible click)
- Store the steam cord in its slide storage place. Take it, fold it in two so as to make a loop. Put the end of this loop in the sliding storage then push gently until you see the end on the other side of the sliding storage
- Press the power cord storage button - to store the power cord in its housing. (depending on model)
- Leave the steam generator to cool before putting it away if you are storing it in a cupboard or a confined space.
- If you store your steam generator in a relatively cold place (approximately 10°C), put it in a warm place before starting your ironing.
- You can store your steam generator safely by carrying it by the iron handle



Environment protection first!

- ① Your appliance contains valuable materials which can be recovered or recycled.
- ➡ Leave it at a local civic waste collection point.

Problems with your steam generator?

| PROBLEMS | CAUSES | SOLUTIONS |
|---|--|---|
| The steam generator does not switch on or the iron indicator light and the «ON-OFF» light are not lit up. | The appliance is not switched on. | Check that the appliance is plugged in correctly to a working power socket and that it is switched on. Press the «ON-OFF» button. |
| | The «AUTO-OFF» system has activated after 30 minutes of non-use and has switched off your steam generator. | Press the «ON-OFF» restart button located under the control panel. |
| Water runs out of the holes in the soleplate. | The soleplate is not hot enough. | Wait for the thermostat light on the iron and fabric selection light to stop flashing to stop flashing before activating the steam control. |
| | The water has condensed in the pipes because you are using steam for the first time or you have not used it for a few minutes. | Press the steam button while holding your iron away from the ironing board until the steam starts to come out. |
| Water streaks appear on the linen. | Your ironing board cover is saturated with water as it is not suited to the power of a steam generator. | Ensure that you have suitable vented/mesh ironing board. |
| White streaks come through the holes in the soleplate. | Scale is coming out of the boiler because it is not being rinsed regularly. | Rinse the collector (see § descaling your steam generator). |
| Brown streaks come through the holes in the soleplate and stain the linen. | You are using chemical descaling agents or additives in the water for ironing. | Never add any products to the water tank (see § what water can I use?). |
| | Your linen is not rinsed sufficiently or you have ironed a new garment before washing it. | Ensure linen is rinsed thoroughly to remove any soap deposits or chemicals on new garments which may be sucked up by the iron. |
| | Fabric fibres have accumulated in the holes of the soleplate and are burning. | Clean the soleplate with a non-metallic sponge. Vacuum the holes from time to time. |
| The soleplate is dirty or brown and may stain the linen. | You are using starch. | Always spray starch on the reverse side of the fabric to be ironed. |
| | You are ironing at too high a temperature. | See our recommendations regarding temperature control settings. |
| There is no steam or there is little steam. | The water tank is empty (red warning light flashing). | Fill the water tank and press the «OK» until the light goes out. |
| The red «tank empty» button is flashing even though the tank has been filled. | You have not pressed the «OK» restart button. | Press the «OK» restart button on the control panel. |
| Steam escapes from around the anti-calc collector. | The collector is not tightened correctly. | Tighten the collector but do not overtighten it. |
| | The collector seal is damaged. | Contact an Approved Service Centre. |
| Steam or water is coming out from under the appliance. | The appliance is faulty. | Stop using the steam generator and contact an Approved Service Centre. |
| The «Anti-Calc» button is flashing even though the collector has been rinsed. | You have not pressed the «OK» restart button. | Press the «OK» restart button located under the control panel. |
| The soleplate is scratched or damaged. | You have put your iron down on a metal iron rest or ironed over zips or metal fasteners. | Always stand the iron upright or on the iron rest and do not iron over zips or metal fasteners. |
| | You have cleaned your soleplate with an abrasive or metal pad. | See chapter «Cleaning the soleplate». |
| The red «tank empty» light is flashing and the «ON-OFF» button does not work. | The appliance has been stored in a cold place (approximately < 10°C). | Unplug the appliance. Wait 3 hours for the appliance to reach room temperature. |

Réf. 1800137205