

BUSH

Instruction manual

b-3363G Home Theatre



You'll soon be enjoying your new Home Theatre.

It all begins here, with your instructions. Don't worry, there's nothing too technical coming up. Just simple, step-by-step guidance to get you up and running quickly. Sound good? Then let's get started.

Help and Guidance

We're here to help you get the most from your soundbar. Should you require any guidance, a simple solution can often be found online at:

www.argos-support.co.uk

If you still require further assistance, call one of our experts on **0345 604 0105**.

Contents

1 Safety information

Safety information 6

2 Getting to know your Home Theatre

Ready? Let's begin 7

Accessories 7

Control panel and remote control 8

Making the connections 10

Connecting the sub woofer 11

Remote control (before use) 11

Installing the remote battery 11

3 Using your Soundbar

Using the stereo RCA inputs 14

Using the optical input 14

Using the line in 14

Pairing a bluetooth device 14

Controlling a paired device 14

Bluetooth notes 14

4 Other information

Wall mounting the soundbar 16

Technical specification 17

Care & maintenance 17

5 Product support

Troubleshooting 19

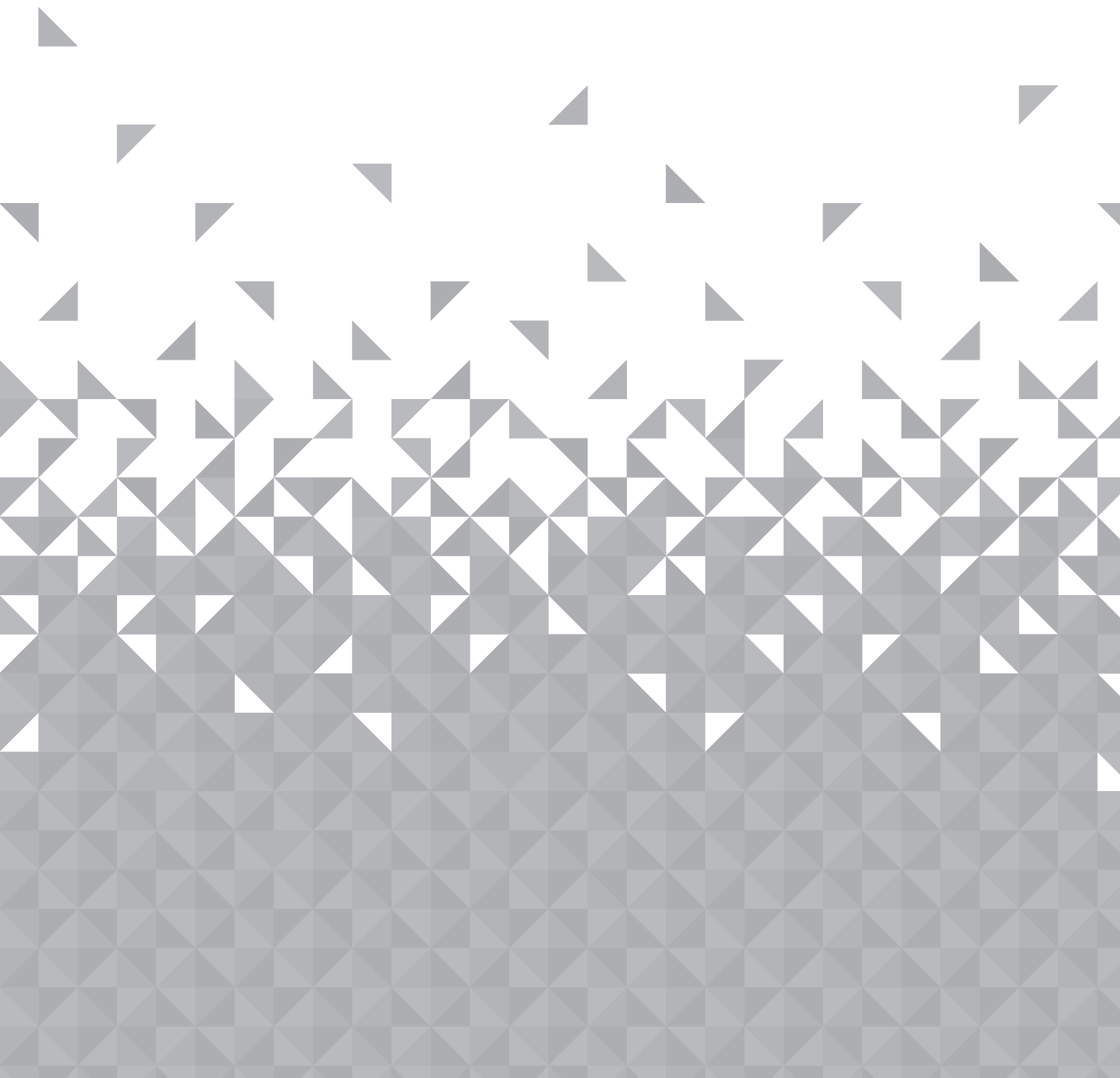
Help and assistance 20

Disposal 21

Guarantee 22



1 Safety information





Safety information

Important - Please read these instructions fully before installing or operating

Power source



- This symbol means that this unit is double insulated. An earth connection is not required.
- The appliance must be connected to a 100-240 volt 50/60Hz AC supply by means of a three pin socket.
- Unplug this apparatus during lightning storms or when unused for long periods of time - to prevent damage to this product.



- Opening or removing covers may expose you to dangerous voltages or other hazards.



- To prevent risk of fire or electric shock, avoid overloading wall outlets, extension cords, or integral convenience receptacles.

- Use suitable power sources - Plug the product into a suitable power source, as described in the operating instructions or as marked on the product.

- The supply voltage should be the same as that indicated in the technical specifications and the appliance rating plate.

- If the socket outlets in your home are not suitable for the plug supplied with this unit check with a qualified electrician for replacement.

- In order to disconnect the apparatus from the mains completely, switch off the outlet and remove the mains plug completely.



- Do not bend, stretch or pull the supply cable in order to avoid electric shock.
- When installed, the power socket must be within easy reach.
- Do not install the unit in a confined space. Allow adequate ventilation to prevent heat build-up.
- For indoor use only.

Heat build up

- During use the unit will heat up, this is not a malfunction. If the unit is used continuously at high volume levels, the unit temperature will rise considerably. Do not touch the unit to avoid potential burns.

Colour irregularity on TV screen

Colour irregularities may be seen on certain types of TV.

- If such an irregularity is seen turn off the TV, then turn on again after 15 to 30 minutes.
- If the colour irregularity is still seen place the soundbar unit further away from the TV.

Moisture and water

- Do not use this apparatus near water or moisture.
- Do not use this product near a bathtub, washbowl, kitchen sink, and laundry tub, in a wet basement, near a swimming pool, or anywhere else that water or moisture is present.

Heat sources and flames

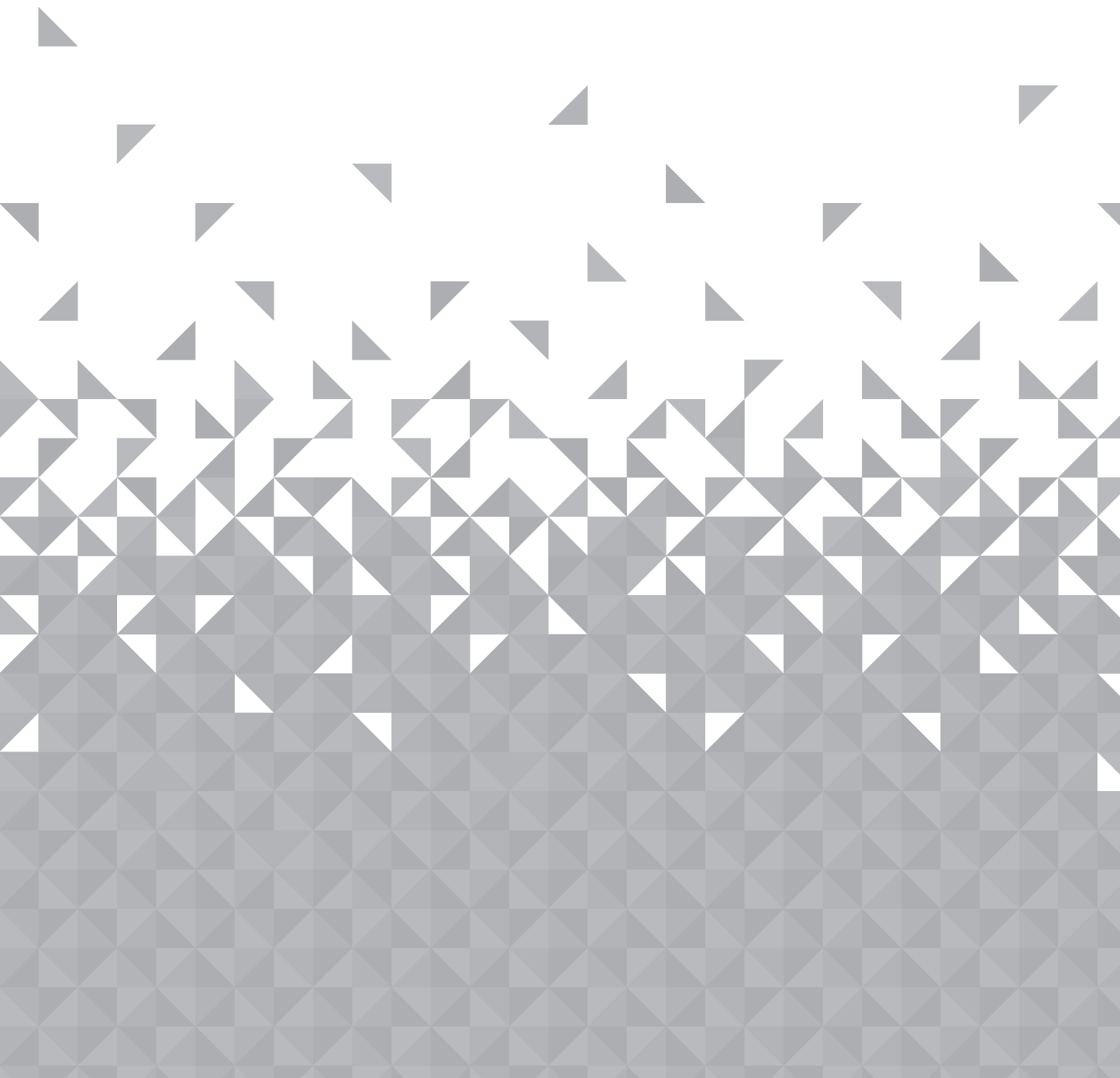


- Batteries shall not be exposed to excessive heat such as sun, fire or the like
- To prevent risk of fire or electric shock, avoid overloading wall outlets, extension cords, or integral convenience receptacles.

Servicing and repairs

- Refer all servicing to qualified service personnel
- Servicing is required when the apparatus has been damaged in any way: such as liquid has been spilled or objects have fallen into the apparatus; the apparatus has been exposed to rain or moisture, does not operate normally, or has been dropped.

2 Getting to know your Home Theatre



Getting to know your Home Theatre

You'll be up and running in no time

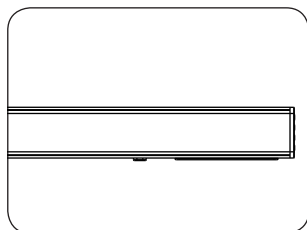
Ready? Let's begin...

Please read these instructions carefully. They contain important information which will help you get the best from your soundbar and ensure safe and correct installation and operation.

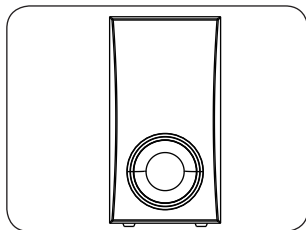
If you require any further assistance, our technical experts are happy to help. For full details, refer to the product support section at the end of these instructions.

Accessories

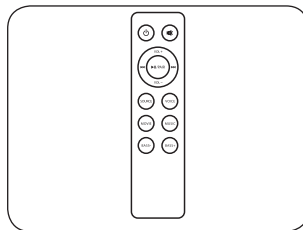
1. A soundbar
2. A external subwoofer
3. Remote control
4. CR2032 battery
5. RCA audio cable
6. Digital optical audio cable
7. 3.5mm audio cable
8. Mains adapter
9. Instruction manual



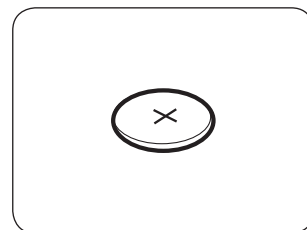
Soundbar



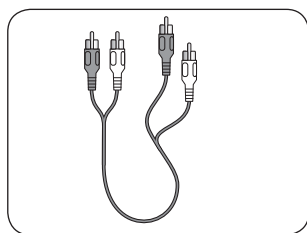
Subwoofer



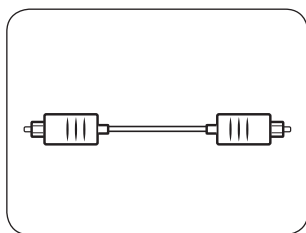
Remote control



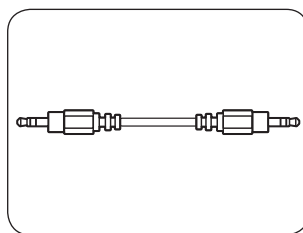
CR2032 battery



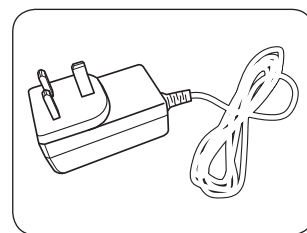
RCA audio cable



Digital optical cable



3.5mm audio cable

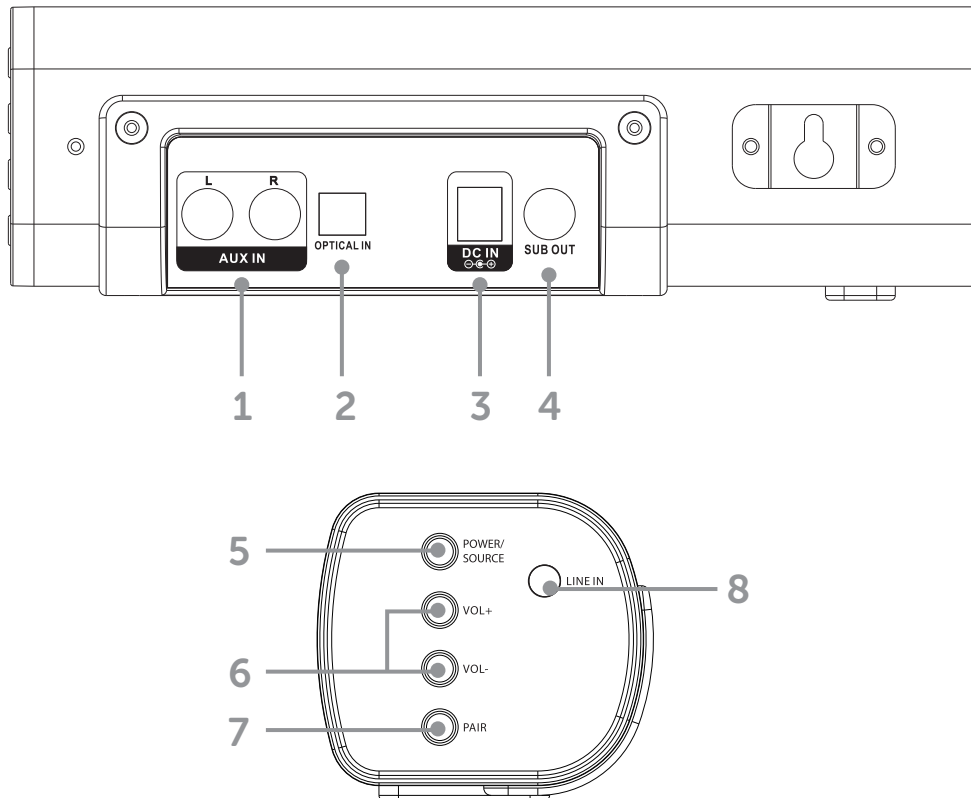


Mains power adapter

If you require any technical guidance or find that your product is not operating as intended, a simple solution can often be found in the **Troubleshooting** section of these instructions.

Getting to know your Home Theatre

You'll be up and running in no time

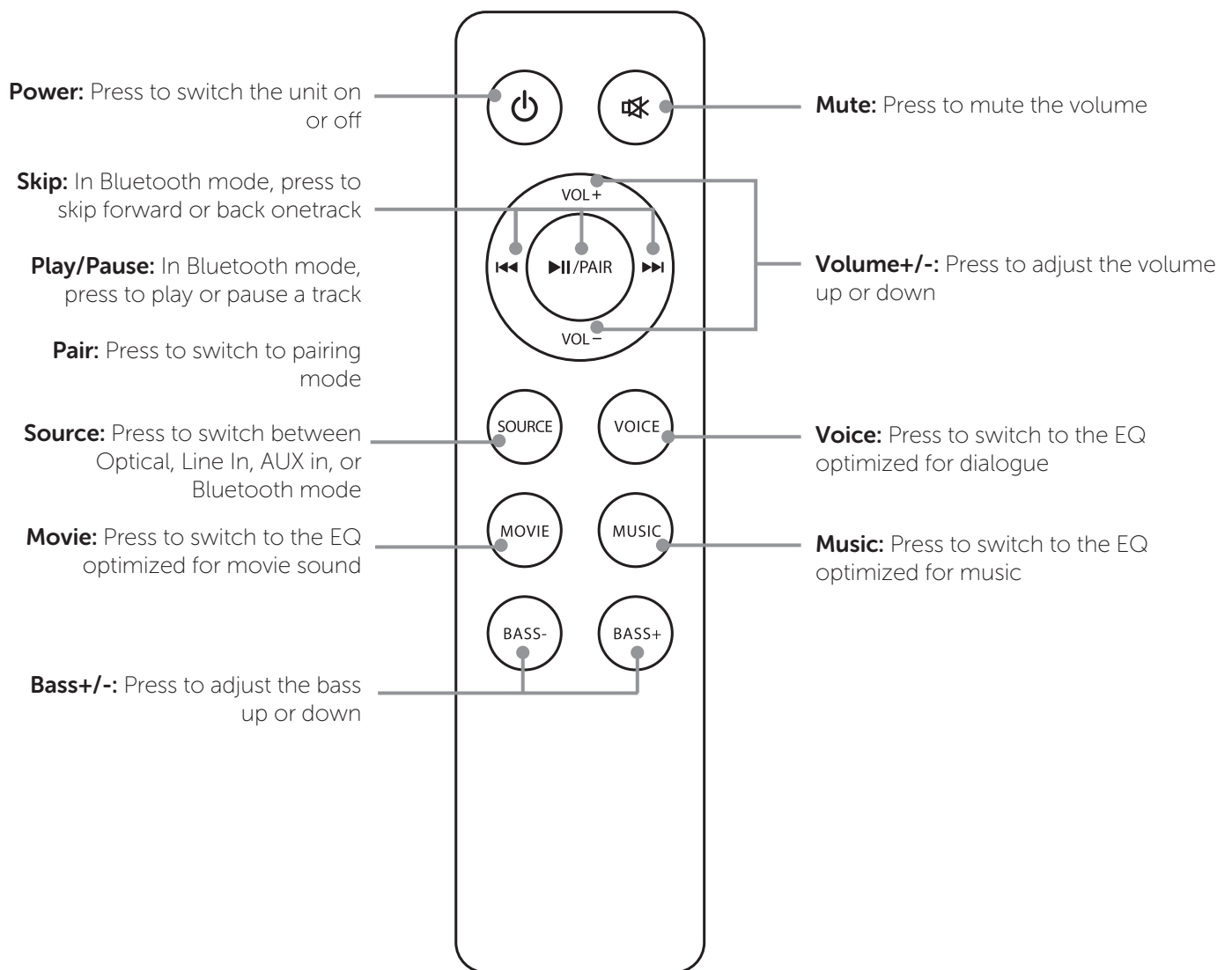


- 1. Stereo RCA Audio inputs**
- 2. OPTICAL input**
- 3. DC Power input**
- 4. Subwoofer Output**
- 5. Power and Source button:** Press and hold 2 seconds to switch the unit on or off. One touch to select a input: BT, Aux in, Line in or Optical in.
- 6. Volume + and - :** Press to adjust the volume up or down.
- 7. Pair:** Press to begin pairing with an external Bluetooth device.
- 8. 3.5mm LINE input**

or online at www.argos-support.co.uk If you still require further assistance, call one of our experts on 0345 604 0105.

Getting to know your Home Theatre

You'll be up and running in no time



If you require any technical guidance or find that your product is not operating as intended, a simple solution can often be found in the **Troubleshooting** section of these instructions,

Getting to know your Home Theatre

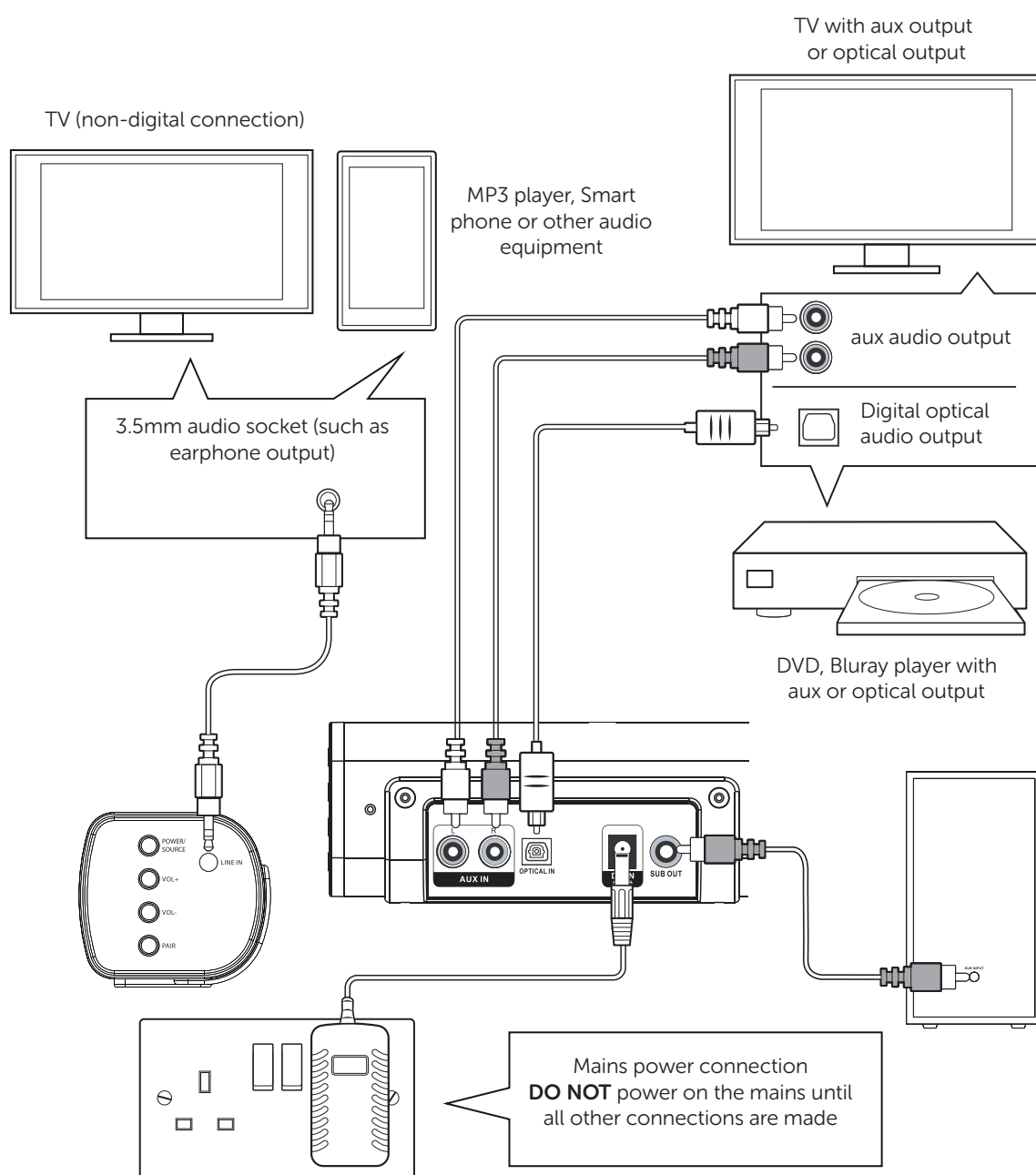
You'll be up and running in no time

Making the connections

Follow the below connection guide to connect the soundbar to a TV with or without a digital output, a Bluray/DVD player or an audio source such as an MP3 player.

Only one digital connection to a TV is required. Use the optical connection.

DO NOT power on the mains until all other connections are made.



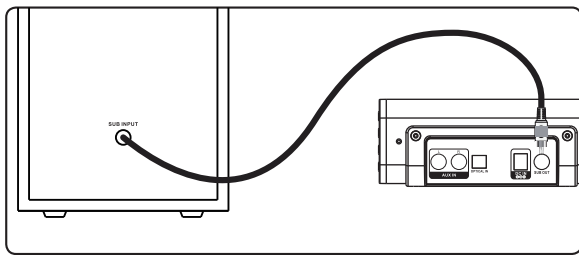
or online at www.argos-support.co.uk If you still require further assistance, call one of our experts on 0345 604 0105.

Getting to know your Home Theatre

You'll be up and running in no time

Connecting the sub woofer

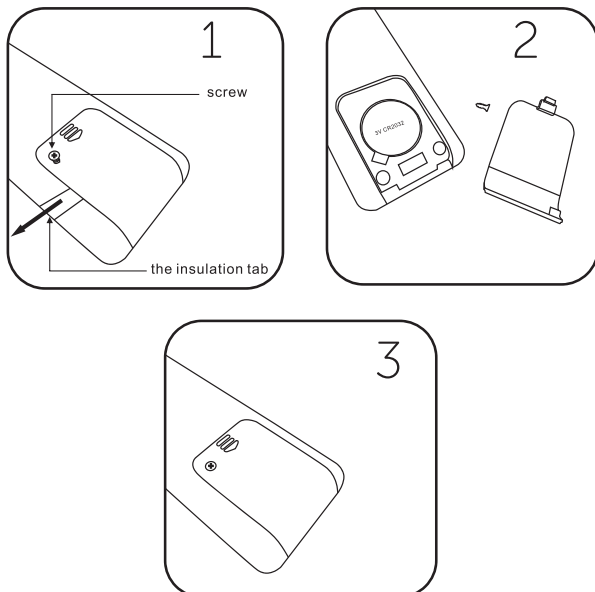
Follow the below instructions to connect the wired subwoofer to the soundbar.



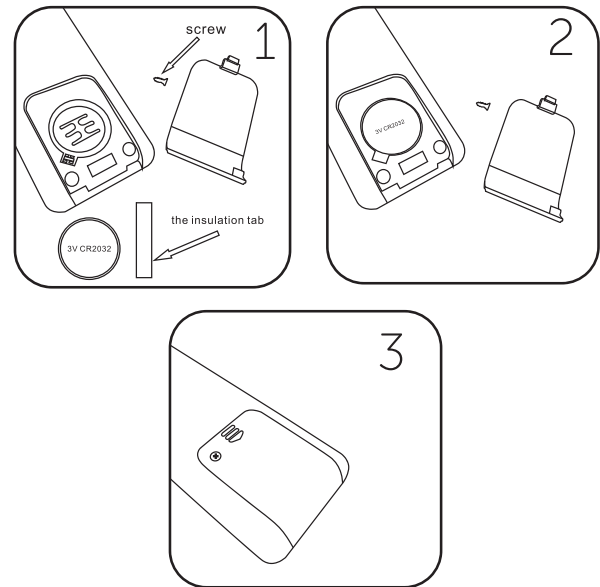
1. Use the RCA audio cable from the subwoofer to connect to the SUB OUT output on the soundbar.
2. When audio is played through any source, the speaker will automatically use the connected subwoofer.

Remote control (before use)

Before use, pull the tab out from the bottom of the remote control. This allows the terminals contact with the pre-installed battery.



Installing the remote battery

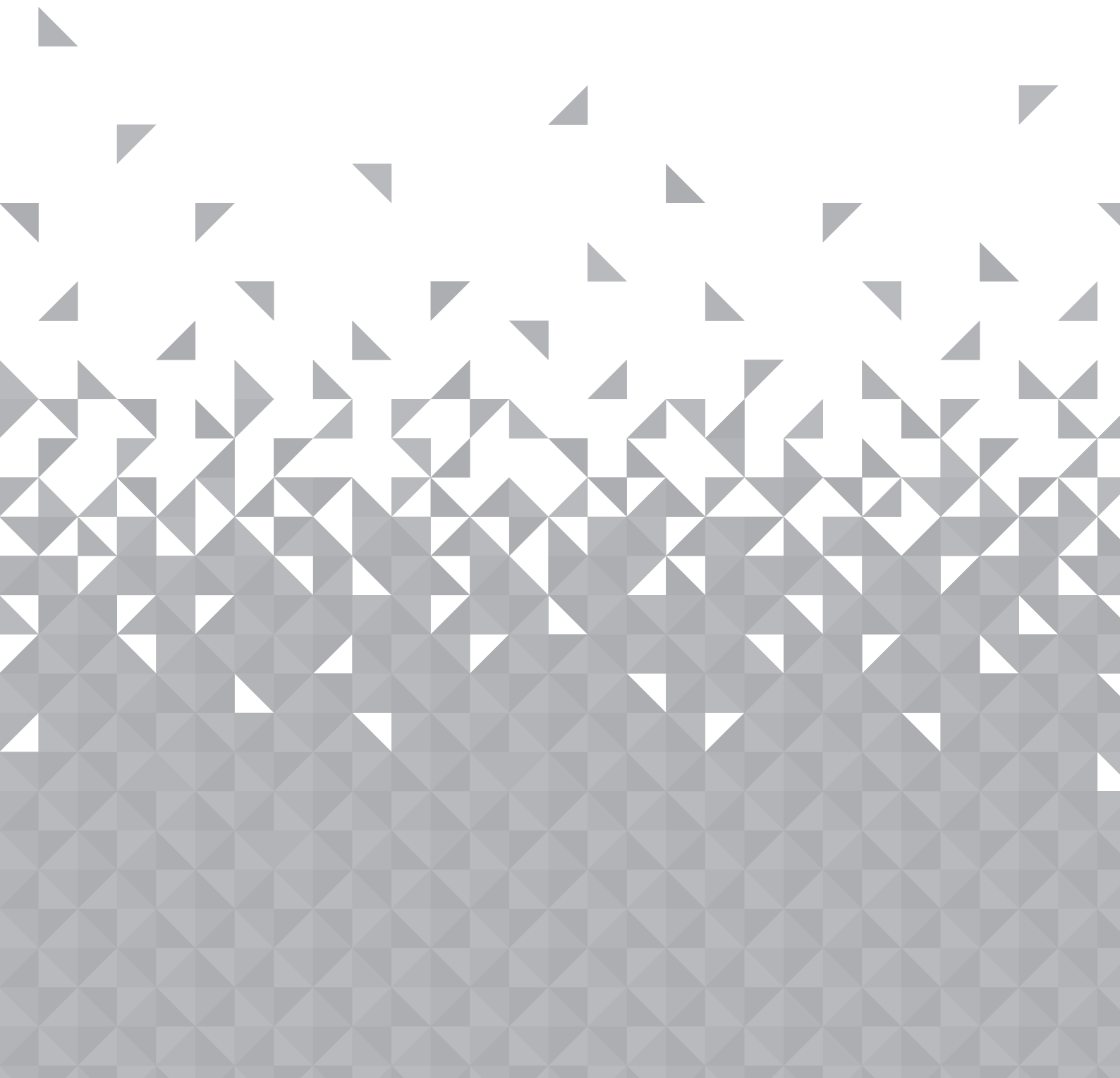


As the battery becomes exhausted the operating distance will shorten. When the remote no longer operates the unit, replace the battery with a new CR2032 lithium battery.

- Dispose of used batteries with regard to the recycling regulations in your area.
- Do NOT short circuit batteries or throw them into water, the general rubbish or in a fire. Weak batteries can leak and damage the remote control. Replace them in good time!
- Keep coin-sized button batteries out of sight and out of the reach of children. Coin lithium batteries can cause serious injury when swallowed.

3

Using your Home Theatre



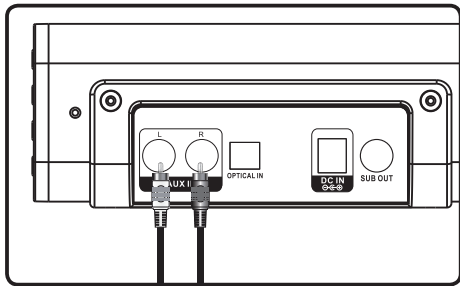
Using your Home Theatre

Let's get started

USING THE STEREO RCA INPUTS

When connecting two products using an RCA cable, matches the colored ports with the same colored connection. Before use, disconnects any cable connected to the Line in.

1. Connect the RCA Cable to the AUX IN stereo inputs located on the back of the unit, and to the audio outputs on the television.
2. Press and hold 2 seconds the POWER / SOURCE button on side panel or POWER button directly on the remote control to switch on the unit.
3. Press the SOURCE button on your remote control repeatedly to enter AUX mode or one touch the POWER/SOURCE button on the unit repeatedly to enter AUX mode, indicated by a white light.
4. Audio played through the television will now be heard through the speakers.

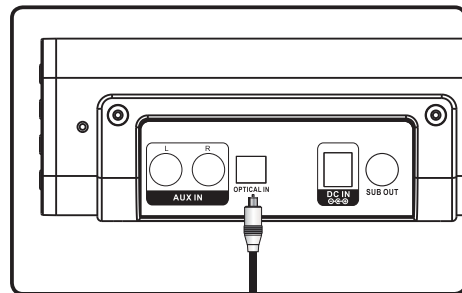


Using the Optical Input

You will need: An audio source with an Optical Audio Output and a Digital Optical Audio cable (included)

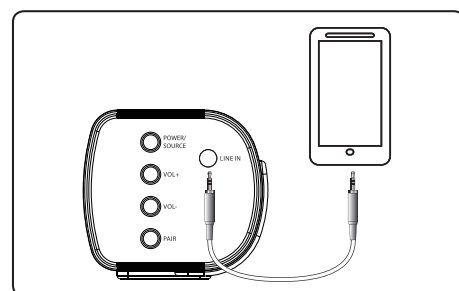
1. Connect the Digital Optical Audio cable to the optical output on the audio source and to the OPTICAL IN on the speaker bar.
2. Press and hold 2 seconds the POWER/SOURCE button on side panel or POWER button directly on the remote control to switch on the unit.
3. Press the SOURCE button on your remote control repeatedly to switch to Optical Mode or one touch POWER/SOURCE button on main unit repeatedly to select the Optical mode. The mode indicator LED will turn orange.

4. Using the native controls on your connected device, make sure the audio settings are set to PCM or Optical Audio and are turned On.
5. Audio from the connected audio source will now be played through the speakers.



Using the LINE in

1. Plug one end of a 3.5mm audio input cable (included) into the LINE IN on the unit. Before use, disconnect and cables connected to the Stereo RCA Inputs.
2. Plug the other end of the cable into the audio output/headphone output on an MP3 player or other audio source.
3. Press and hold 2 seconds the POWER/SOURCE button on side panel or POWER button directly on the remote control to switch on the unit.
4. Press the SOURCE button on your remote control repeatedly to enter LINE in mode or one touch the POWER/SOURCE button on the unit repeatedly to enter Line in mode. The mode indicator will turn green.
5. Audio played through the connected device will now be heard through the speakers.



Using your Home Theatre

Let's get started

Pairing a bluetooth device

Before you can use the soundbar with your phone or other bluetooth capable device you will need to pair the device to the soundbar.

Pairing a Bluetooth Device for the First Time

1. Press and hold 2 seconds the POWER/SOURCE button on the unit or the POWER button on the remote control to switch on the unit.
2. Select and press the SOURCE button directly on the remote control to enter Bluetooth mode or press the POWER/SOURCE button repeatedly to enter Bluetooth mode, indicated by a blue light.
3. Press the PAIR button on the remote control or the unit directly. The pairing indicator will flash quickly. When pairing, remain within 3 feet of the unit.
4. Using the native controls on your Bluetooth device, select the "b-3363G" in your Bluetooth settings to pair.
5. When successfully paired and connected, a beep will issue from the unit and the Pairing Indicator will display a solid blue light. After initial pairing, the unit will stay paired unless unpaired manually by the user, or until it is erased due to a reset of the device.

If your device should become unpaired or you find it is unable to connect, repeat the above steps.

Controlling a paired device

Once connected you can either use the controls on the audio device to begin playback, skip tracks etc. Or you can use the control buttons on the remote.

1. The ►|| PAIR button on the main unit (3) or on the remote when pressed will begin playback of the selected track on the audio device. Press again to pause playback.
2. To skip to the next track press the ►► button on the remote.
3. To skip to the previous track press the ◀◀ button on the remote.
4. Any further operations must be done from the audio device.

The volume output is effected by the volume level on the audio source EG: Phone or laptop, so make sure that is set to about 70-80% (not too loud to avoid distortion).

Bluetooth notes

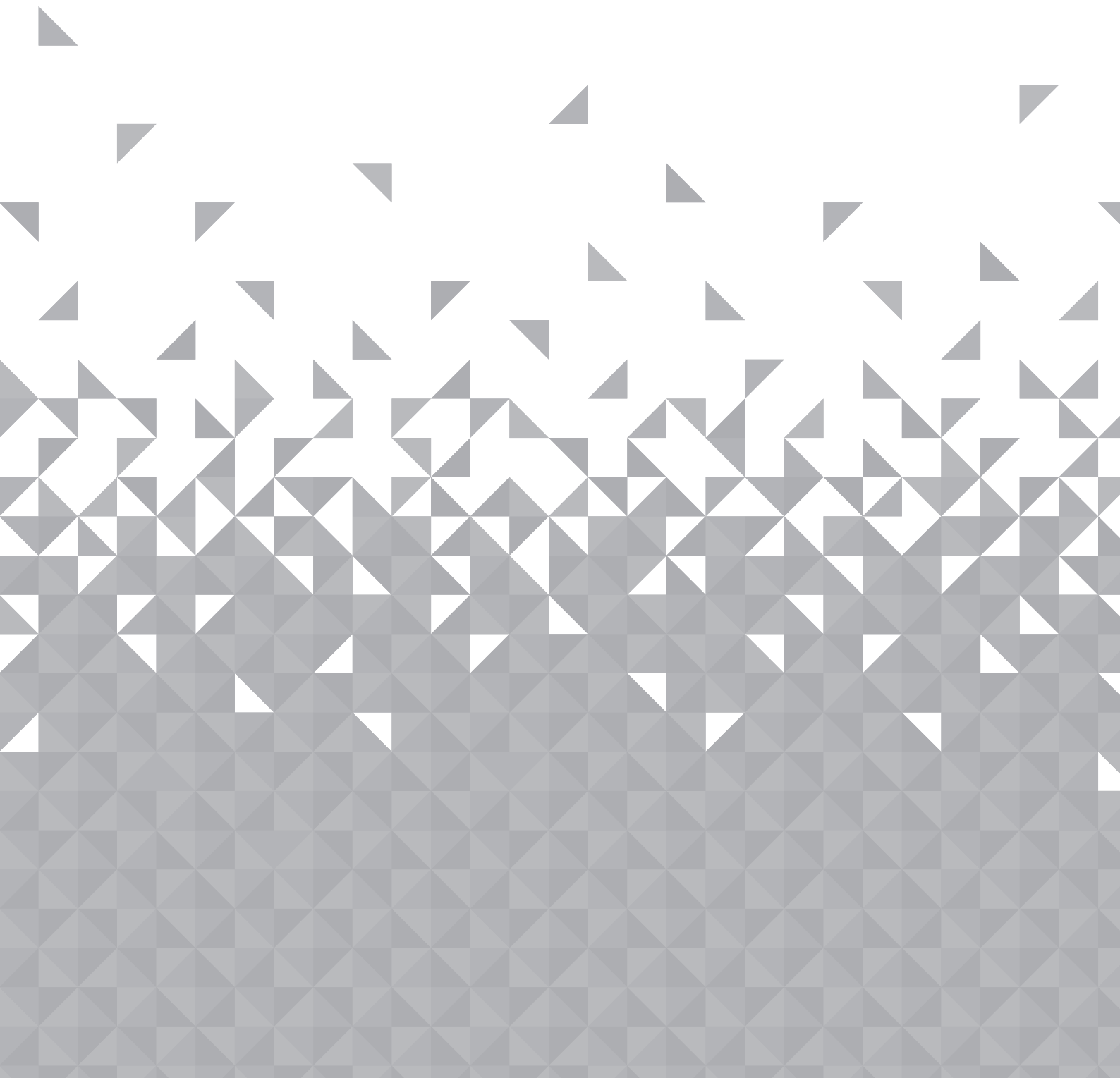
- The operation range of bluetooth is approximately 10 meters (30 Feet). Any obstacles in the path between devices may reduce this range.
- Only one Bluetooth device can be paired at a time.
- Not all Bluetooth devices are compatible.

Source Indicator Lights

STATUS	INDICATOR
Power Off	Red Light
Optical Mode	Orange light
Aux In Mode	White Light
Line In Mode	Green Light
Bluetooth Pairing	Flashing Blue Light
Bluetooth Connected	Blue Light

If you require any technical guidance or find that your product is not operating as intended, a simple solution can often be found in the **Troubleshooting** section of these instructions.

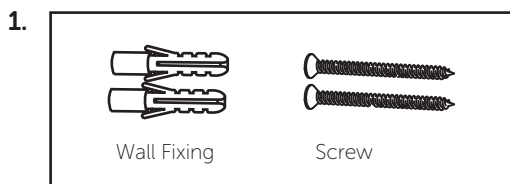
Other information 4



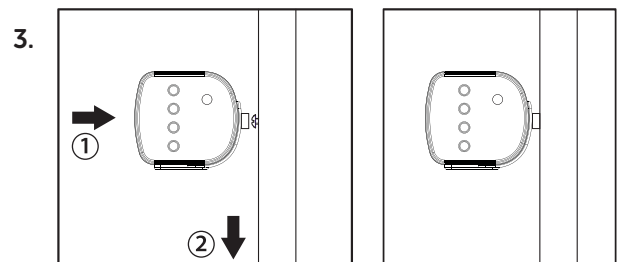
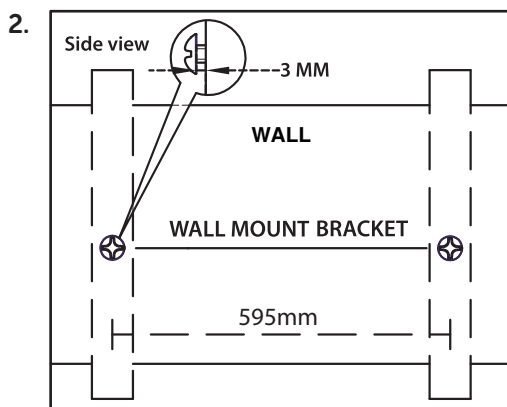
Other information

Helpful technical information

Wall mounting the soundbar



Accessories included



- In order to avoid damage to the unit and personal injury you should get a qualified person to drill the fixing surface and fit the appropriate wall fixings.
- Take care not to allow the main unit to fall while attempting to hook onto the wall mount brackets.
- Before mounting, check the wall strength, if it is not clear then consult relevant qualified personnel.
- When drilling into walls, always check that there are no hidden wires or pipes etc.
- Make sure the screws & wall plugs are suitable for supporting the unit.

If you require any technical guidance or find that your product is not operating as intended, a simple solution can often be found in the **Troubleshooting** section of these instructions,

Other information

Helpful technical information

Technical specification

Amplifier	
Power output	100W RMS
Frequency response	20Hz - 20KHz \pm 3dB
Input sensitivity	1000mV
Main unit	
Power supply	INPUT: 100-240V ~ 50-60Hz OUTPUT: 24V $\overline{\text{---}}$ 2.5 A
Power consumption	60W
Standby power consumption	\leq 0.5W
Full range speaker drivers	Impedance: 4 Ohm, 52mm (2") Frequency response: 180Hz ~ 20KHz
Subwoofer	Impedance: 4 Ohm, 120mm (4.75") Frequency response: 35~180Hz
Dimensions	Soundbar: 940 x 68 x 60mm Sub woofer: 172 x 352 x 320mm
Mains cable length	1 metre
Remote control	
Battery	1 x CR2032
Bluetooth	
Bluetooth compatibility	EDR, GFSK, π /4-DQPSK, 8DPSK
Bluetooth version	2.1

Care & maintenance

After using the soundbar

Set to Standby.

Switch the unit off at the mains and unplug it if you are leaving it unattended for a long period (holidays etc).

Avoid leaving the battery fitted in the remote control if you leave the unit unattended for long periods. It may leak and damage the remote control.

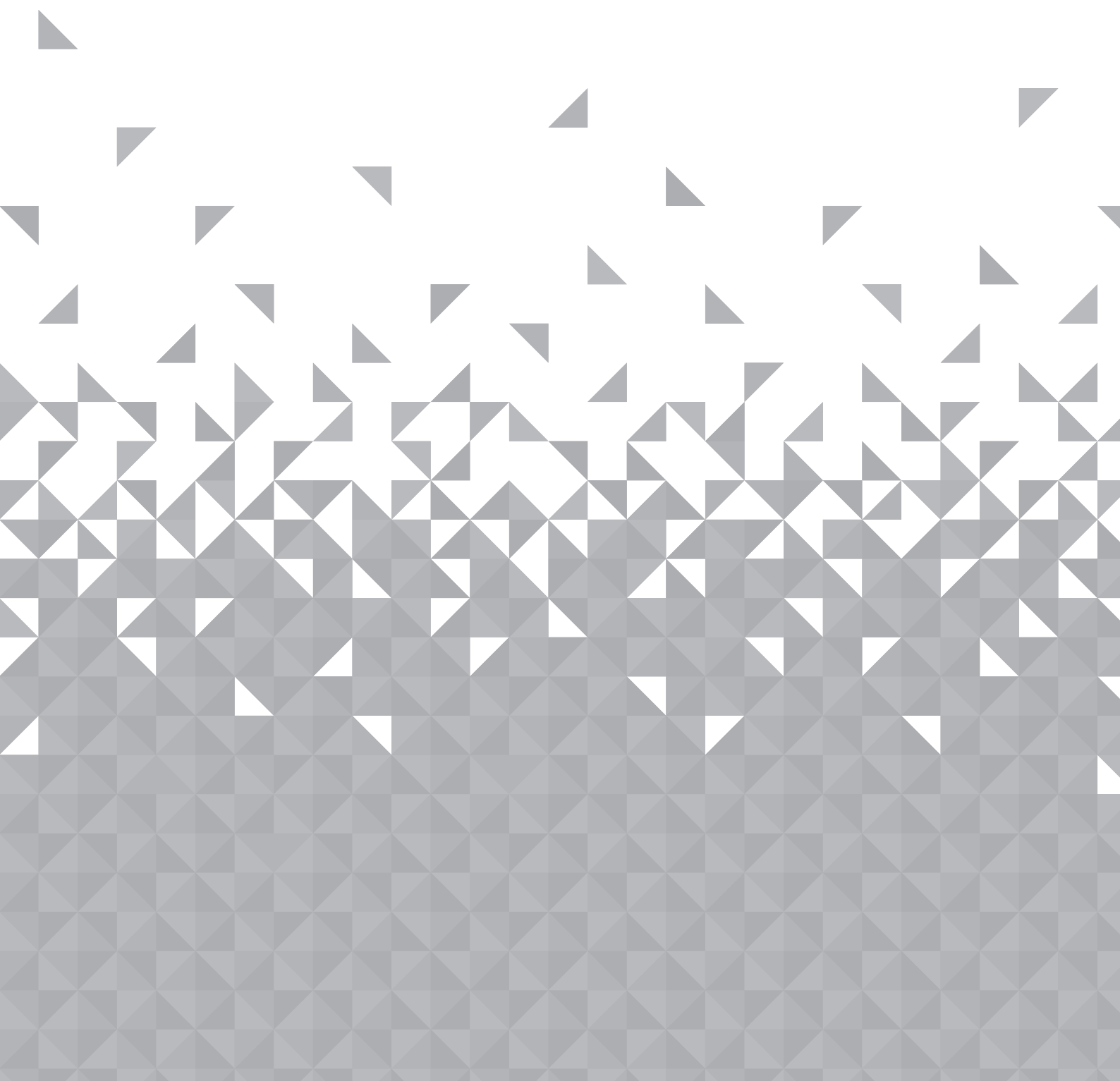
Care & cleaning

All care and cleaning operations should be carried out with the unit unplugged from the mains power.

Occasionally wipe the cabinet with a lint free duster. Never clean the unit with liquids or solvents.



5 **Product support**



Product support

Help is always at hand

Troubleshooting

No power.

- Ensure the mains plug is connected to a power supply, and is switched ON.
- Make sure there is power to the mains socket.

No sound?

- Make sure if playing from the AUX input, the external source has the volume turned up and is outputting sound.
- Make sure the volume is turned up.
- If using the digital optical ensure the source DIGITAL output is set to PCM, LPCM, PCM 2Ch stereo or PCM downmix.
- Bluetooth device not paired. Check 'Pairing a bluetooth device'.

No response from the soundbar.

- Unplug the power cable for 1 minute then plug back in again.

Remote control does not work.

- Reduce the distance between the remote and main unit
- Check the batteries are installed correctly.
- Replace the batteries
- Aim the remote directly at the soundbar

Unit powers off after 20 minutes.

- This unit is designed to enter STANDBY mode automatically after 20 MINUTES of inactivity. Press the STANDBY button to wake the unit.

Product support

Help is always at hand

Help and assistance

If you require any technical guidance or find that your soundbar is not operating as intended, a simple solution can often be found in the **Troubleshooting** section of these instructions or online at www.argos-support.co.uk

If you still require further assistance, call one of our experts on **0345 604 0105**. To help give us give you a fast and efficient service please have the following information ready:

Model Ref.	<input type="text" value="b-3363G"/>	You can find these on the rating plate - a small information panel (usually a sticker or metal plate) on the rear of your product
Serial number	<input type="text"/>	
Date of purchase	<input type="text"/>	This will be shown on your receipt

Local call rates applies*

Lines open 8am-7pm Monday to Saturday and 10am-4pm Sunday.

*Calls to Argos enquiry lines may attract a charge and set up fee from residential lines depending on your call plan/tariff. Mobile and other providers costs may vary, see www.bt.com/pricing for details.

For Security and training purposes, telephone calls to and from customer service centres maybe recorded and monitored. Calls from Republic of Ireland will attract international call charges.

or online at www.argos-support.co.uk If you still require further assistance, call one of our experts on **0345 604 0105**.

Product support

Help is always at hand

Disposal



- Disposal of your old product. Your product is designed and manufactured with high quality materials and components, which can be recycled and reused
- When this crossed out wheeled bin symbol is attached to a product it means the product is covered by the European Directive 2002/96/EC.
- Please make yourself aware of the local collection system for electrical and electronic products.
- Please act according to your local rules and do not dispose of your old products with your normal household waste.
- The correct disposal of your old product will help prevent potential negative consequences for the environment and human health.

Declaration of Conformance

Hereby, Argos Ltd, declares that this Band II LPD device is in compliance with the essential requirements and other relevant provisions of Directive RED 2014/53/EC. The complete declaration of conformity can be obtained by contacting <http://www.argos-support.co.uk/>



The Bluetooth® word mark and logos are registered trademarks owned by Bluetooth SIG, Inc. and any use of such marks is under license.

CE This product is intended for use within the UK. This equipment complies with the essential requirements for the Radio Equipment and Telecommunications Terminal Equipment Directive RED 2014/53/EC.

Product support

Help is always at hand

BUSH

Call us now and activate your 12 month guarantee

Thank you for choosing Bush. Your new product is guaranteed against faults and breakdowns for 12 months. Don't forget to register it with us today so we can provide you with our best possible after-sales service and useful updates.

www.bushregistration.co.uk

FREEPHONE*

0800 597 8548

Lines are open 8am - 8pm, 365 days a year. *Calls may be recorded and monitored.

Your Bush Guarantee

This product is guaranteed for twelve months from the date of original purchase. Any defect that arises due to faulty materials or workmanship will be repaired free of charge (or if applicable the product will be replaced or the purchase price refunded) where possible during this period by the dealer from who you purchased the unit.

The guarantee is subject to the following provisions:

- The guarantee does not cover accidental damage, misuse, cabinet parts, knobs or consumable items.
- The product must be correctly installed and operated in accordance with the instructions contained in the manual.
- It must be used solely for domestic purposes. The guarantee will be rendered invalid if the product is re-sold or has been damaged by inexpert repair.
- Specifications are subject to change without notice.
- Bush disclaim any liability for loss or damage arising from the breakdown of the product.
- This guarantee is in addition to and does not diminish your statutory or legal rights.

Important Data Protection Information

If you provide us with information about another person, you confirm that they have appointed you to act for them, to consent to the processing of their personal data including sensitive personal data and that you have informed them of our identity and the purposes (as set out in the Important Data Privacy notice displayed overleaf) for which their personal data will be processed.

You are entitled to ask for a copy of the information we hold about you (for which we may charge a small fee) and to have any inaccuracies in your information corrected.

For quality control and training purposes, we may monitor or record your communications with us.

If your personal details change, if you change your mind about any of your marketing preferences or if you have any queries about how we use your information, please let us know by contacting our Data Protection Officer, Domestic & General, Leicester House 17 Leicester Street, Bedworth, Warwickshire CV12 8JP.

Guarantor: Argos Limited - 489 - 499 Avebury Blvd. - Milton Keynes - MK9 2NW

or online at www.argos-support.co.uk If you still require further assistance, call one of our experts on **0345 604 0105**.

BUSH

Contact:

www.argos-support.co.uk

Helpline: 0345 604 0105

