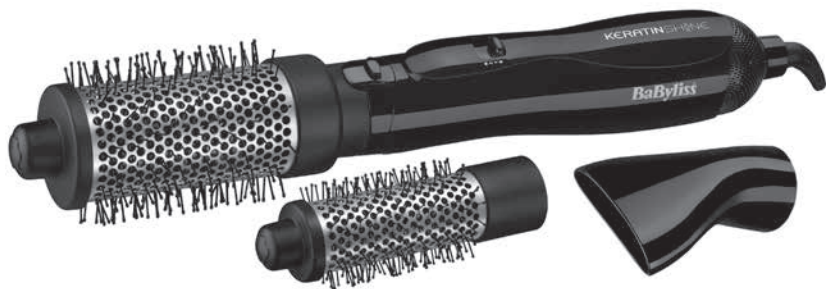


BaByliss[®]



KERATIN SHINE VOLUME

Model 2993U

BaByliss[®]

KERATIN SHINE VOLUME AIRSTYLER

A powerful 1000W hot air styler with 3 interchangeable attachments, perfect for adding volume, shape and smoothness to any style. Featuring keratin-infused ceramic technology and super ionic conditioners, to give a smooth, shiny finish for healthy looking hair.

FEATURES

- 1000W
- 2 heats plus a cool setting
- Keratin-infused ceramic coated barrels
- 50mm thermal brush for dramatic volume
- 38mm thermal brush for shorter styles, layers and fringes
- Nozzle for precise styling
- Super ionic frizz-control
- 2m swivel cord
- 3 year guarantee

SAFETY CAUTIONS

- This appliance should only be used as described within this instruction booklet. Please retain for reference.

IMPORTANT CHILD SAFETY

WARNING! Polythene bags over a product or package may be dangerous. To avoid danger of suffocation, keep this wrapper away from babies and children. This bag is not a toy.

WARNING! THIS APPLIANCE GETS HOT!

- **ALWAYS** keep out of reach of children (during and after use and whilst cooling).
- This appliance should not be used, cleaned or maintained by children.
- Always take extra care if used on children or near children.
- Do not use on very young children.

IMPORTANT SAFETY

- **UK Only:** This appliance must not be used in the bathroom. If using the appliance in a bathroom, unplug after use as the proximity of water can be dangerous even if the appliance is switched off. For additional protection the installation of a residual current device (RCD) with a rated residual operating current not exceeding 30mA is advisable in the electrical circuit supplying the bathroom. Ask your installer for advice.

WARNING! Do not use this appliance near water contained in basins, bathtubs or other vessels.



- Do not use this appliance in the bathroom.
- Do not immerse the appliance in water or other liquids.
- Always inspect the appliance before use for noticeable signs of damage. Do not use if damaged, or if the appliance has been dropped. In the event of damage, discontinue use immediately. Contact the Conair Customer Care Line (refer to 'UK After Sales Service' section for further information).
- Do not use the appliance if the lead is damaged. In the event of lead damage, discontinue use immediately. If the lead is damaged it must be replaced by the

manufacturer. Return the appliance to the Customer Care Centre (refer to 'UK After Sales Service' section for further information). No repair must be attempted by the consumer.

- Do not leave the appliance unattended when switched on or plugged in.
- This unit is equipped with a safety thermostat. In the event of overheating the appliance will either stop automatically or run hot and cold intermittently. Should this happen, switch the airstyler to the "0" position, unplug and allow to cool for 10 minutes. Before use, ensure the rear filter is clear of hair and other debris. Plug in and switch on. If the appliance continues to overheat discontinue use immediately, switch off and unplug, and contact the Conair Customer Care Line (refer to 'UK After Sales Service' section for further information).
- Do not place the appliance on any heat sensitive surface whilst in operation.
- Take care to avoid the hot surface of the appliance coming into direct contact with the skin, in particular the ears, eyes, face and neck.
- Always ensure that the rear air filter is kept away from hair during use to prevent it being pulled into the fan which may cause the appliance to overheat.
- Do not use any other attachments with this appliance other than those supplied with it.
- This appliance should not be used by adults whose reduced physical, sensory or mental capabilities, or whose lack of experience and knowledge, might cause a hazard, unless they have been correctly

instructed to understand the safe use and hazards involved and are adequately supervised.

- After use, do not coil the lead around the appliance as this may cause damage to the lead. Instead, coil the lead loosely by the side of the appliance.
- This appliance complies with the requirements of Directives 2004/108/EC (Electromagnetic Compatibility) and 2006/95/EC (Electrical Safety of Domestic Appliances).

Ionic Technology

Many aspects of modern living, including air conditioning, contact with man-made fibres and air pollution contribute to a build-up of static electricity in the hair. Even brushing and towel drying the hair can increase these levels, causing the surface of the cuticle to become rough. Consequently, hair may have a dull appearance. High levels of static charge can also cause the hair to become “fly-away” and difficult to style. The super ion generator releases more negative ions than a regular ionic port which act to neutralise the static charge, smoothing the hairs cuticle for noticeably smooth, shiny, manageable hair.

Heat Settings

There are 2 heats plus a cool setting. Slide the switch to the first position to select the low heat ‘I’, the second position for the high heat ‘II’, and the third position for the cool setting ‘*’.

INSTRUCTIONS FOR USE

- If you have long or thick hair, you may find it quicker and easier to use a hairdryer first to rough dry your hair and remove the excess moisture. For added volume, turn your head upside down as you dry.
- Once the hair is 80% dry, you should start to create your style using the styler.
- Secure one of the attachments on to the airstyler.
- Choose the setting that best suits your hair type and the style you want to achieve.

- Use setting 'I' for cooler drying and less heat - ideal for shorter styles and finer hair.
- Use setting 'II' for faster drying and more heat - ideal for long styles and thicker, more coarse hair.
- Separate your hair into manageable sections and place the brush head under the section of hair, as close to the roots as possible.
- Use the brush to lift the hair at the roots as you dry.
- Move the styler down through the hair, gently brushing as you dry.
- Finally, select the cool setting ' * ' to set your style.
- Repeat across all sections until hair is dry and the desired style is achieved.
- After use, switch off the styler and remove plug from socket.
- Allow to cool before storing away.

Maximum Volume and Body

- For added root lift and for creating body and volume attach one of the thermal brush heads. Place it into the hair close to the roots; hold the brush in place at the roots for a few seconds before gently moving the styler slowly down the hair.
- To create shape at the ends of the hair, run the brush head from the root to the ends. As you reach the end of the section rotate the brush head turning the ends of your hair inward to achieve a turned in style or alternatively rotate the brush outwards for a flicked out style.
- The cool setting is used at the end of styling to set the style and give long-lasting effect. Once you have finished styling your hair, move the slide switch to the cool position '*' and brush through the section of hair. The cool air helps lock in the style.

Changing the Attachments

- To change the attachment, place over the handle so that the small cut out area goes behind the buttons, push the attachment on to the handle until it clicks into place.
- To remove the attachment, press and hold the two buttons and pull the attachment away from the handle.

CLEANING & MAINTENANCE

To help keep your appliance in the best possible condition follow the steps below:

General

- Do not wrap the lead around the appliance, instead coil the lead loosely by the side when storing away.
- Do not use the appliance at a stretch from the power point.
- Always unplug after use.

Cleaning & Maintenance

- Unplug the appliance and let it cool completely before cleaning it.
- Holding the handle of the appliance firmly pull the top of the rear filter towards you, this will enable the rear filter to open.
- Using a soft brush, clean any hair and other debris from the filter.
- Replace the rear filter by pushing back into position.
- To clean the outside of the appliance, wipe with a damp cloth. Make sure no water enters the appliance and it is completely dry before use.

UK GUARANTEE

This BaByliss appliance is guaranteed for consumer use for 3 years.

This guarantee covers defects under normal use from date of purchase and ceases to be valid in the event of alteration or repairs by unauthorised persons. If the appliance does not perform satisfactorily due to defects in materials or manufacture, it will be repaired or replaced through Conair UK After Sales Service. The Conair Group Ltd reserves the right to amend terms and specifications without prior notice.

This guarantee in no way affects your statutory rights.

UK AFTER SALES SERVICE

For further advice on using the appliance or should you need to return your product, please contact the Conair Customer Care Line on 0370 5 133191 (09:00 to 17:00 Monday to Friday) or e-mail your enquiry to ukinfo@conair.com.


The return address is:

Customer Care Centre
Conair Logistics
Unit 4, Revolution Park
Buckshaw Avenue
Buckshaw Village
Chorley
PR7 7DW

Please enclose your returns number, name and address details, together with a copy of proof of purchase and details of the fault.

SAFE DISPOSAL



The  symbol on the product or on its packaging indicates that this product may not be treated as household waste. Instead it should be handed to an appropriate collection point for the recycling of Electrical and Electronic equipment. By ensuring this product is disposed of correctly, you will help prevent potential negative consequences for the environment and human health, which could otherwise be caused by inappropriate waste handling of this product. For more detailed information about the recycling of this product, please contact your local council office or your household waste disposal service.


UK WIRING INSTRUCTIONS

The wires in the mains lead are coloured in accordance with the following code:

BLUE = NEUTRAL

BROWN = LIVE

As the colours of the wire in the mains lead of this appliance may not correspond with the colour marking identifying the terminals on your plug, proceed as follows:

- The wire which is coloured BLUE must be connected to the terminal which is marked with the letter N.
- The wire which is coloured BROWN must be connected to the terminal which is marked with the letter L.
- Neither the BLUE nor BROWN wires should be connected to the terminal which is marked with the letter E or the  symbol.

This appliance is supplied fitted with a BS1363 mains plug and a BS1362 13A fuse. If this plug is removed from the appliance please ensure it is disposed of safely as a disconnected plug is dangerous if reconnected to the mains. If any other type of plug is used, a 13A fuse must be fitted.

