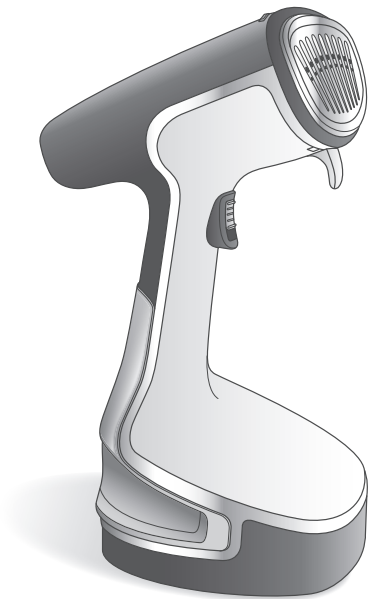


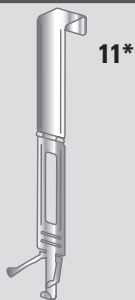
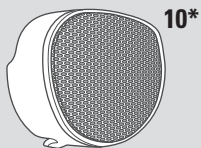
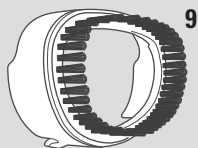
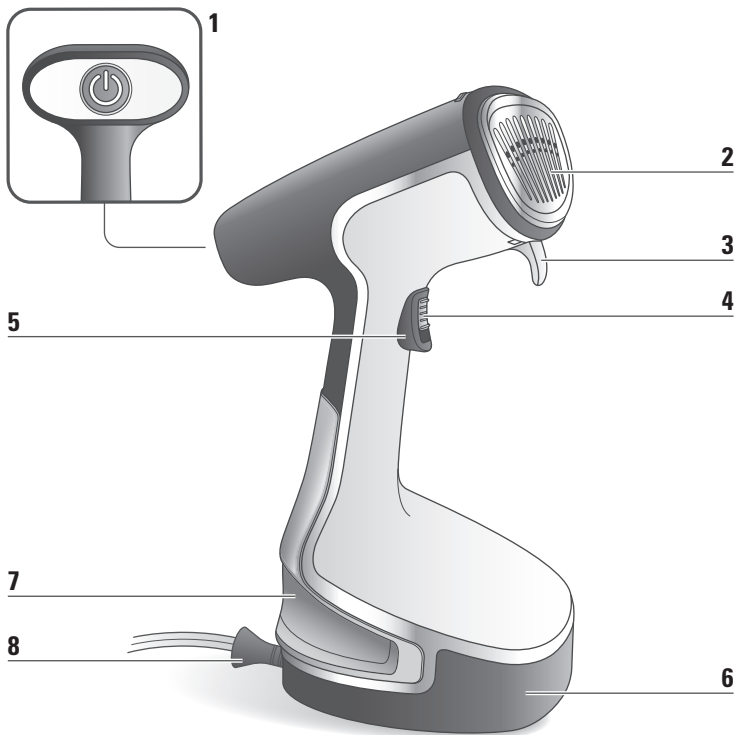
Tefal®



Access' Steam

DR80XX

www.tefal.com



* EN Depending on model

PRODUCT DESCRIPTION

1. On/Off button
2. Steam head
3. Hanging hook
4. Lock position
for continuous steam
5. Steam trigger
6. Standing base
7. Removable water tank
8. Cord exit
9. Fabric brush
- 10*. Steam cover
- 11*. Door hook

IMPORTANT SAFETY INSTRUCTIONS

When using your appliance, basic precautions should always be followed, including the following:

- Read all instructions before using this product.
- This product has been designed for indoor, domestic use only. Any commercial use, inappropriate use or failure to comply with the instructions, the manufacturer accepts no responsibility and the guarantee will not apply.
- Always plug your appliance:
 - into a mains circuit with voltage between 220 V and 240 V.
 - into an earthed electrical socket.

Connecting to the wrong voltage may cause irreparable damage to the appliance and will invalidate your guarantee.

If using a mains extension lead, ensure that it is correctly rated (16A) with an earth, and is fully extended.

- Completely unwind the power cord before plugging into an earthed socket.
- Use appliance for its intended use only.
- To reduce the risk of contact with hot water emitting from steam vents, check appliance

before each use by holding it away from body and operating steam button.

- Never pull on the cord to disconnect the appliance from electrical outlet; instead, grasp plug and pull to disconnect on the plug to disconnect the appliance.
- Do not allow cord to touch hot surfaces or come into contact with rough or sharp edges. Let the appliance cool completely down before putting away. Loop cord loosely around appliance when storing.
- Always disconnect appliance from the electrical supply when filling with water or emptying when cleaning, when removing or refitting accessories and when not in use.
- Care should be taken when using the appliance due to the emission of steam.
- Do not operate appliance with a damaged cord or if appliance has been dropped or damaged. To avoid the risk of electric shock, do not disassemble or attempt to repair the appliance. Take it to the nearest Tefal approved service centre for examination and repair. Incorrect reassembly or repair could cause a risk of fire, electrical shock or injury to persons when the appliance is used.
- Close supervision is necessary for any appliance being used by or near children.

- Do not leave the appliance unattended while plugged in or while it is still hot.
- Burns could occur from touching hot metal or plastic parts, hot water or steam. Use care when you empty a steam appliance. There may be hot water in the reservoir.
- If an extension cord is absolutely necessary, a cord with a 16A ampere rating shall be used. A cord rated for less amperage can result in a risk of fire or electric shock due to overheating. Care shall be taken to arrange the cord so that it cannot be pulled or be tripped over.
- To protect against a risk of electric shock, do not immerse the appliance in water or other liquids.
- Do not direct steam at people, animals or clothes while they are being worn.
- This appliance is not intended for use by persons (including children) with reduced physical, sensory or mental capabilities, or lack of experience and knowledge, unless they have been given supervision or instruction concerning use of the appliance by a person responsible for their safety. Children should be supervised to ensure that they do not play with the appliance.
- This appliance can be used by children aged from 8 years and above and persons with reduced physical, sensory or mental capabilities or lack of experience and knowledge if they have been given supervision or instruction concerning use of the appliance in a safe way and understand the

hazards involved. Children shall not play with the appliance. Cleaning and user maintenance shall not be made by children without supervision.

- The use of accessory attachments other than those provided by *Tefal is not recommended and may result in fire, electric shock or personal injury.
- The appliance must be rested on a stable surface. When placing the appliance on its base, ensure that the surface on which the base is placed is stable.
- The appliance must not be used if it has been dropped, if there are visible signs of damage or if it is leaking.
- Check the electrical power cord for sign and wear or damage prior to use. If the electrical power cord is damaged, it must be replaced at an approved service centre to avoid any danger.

SAVE THESE INSTRUCTIONS

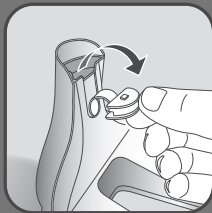
1 BEFORE USE



During the first few uses, the appliance may produce smoke, a harmless odour and a light emission of particles. These are simply the engineering residues from the manufacturing process burning off. These are harmless and will quickly disappear.



Remove the water tank.



Remove the water inlet stopper.

WHICH WATER SHOULD I USE?

Filling the water tank

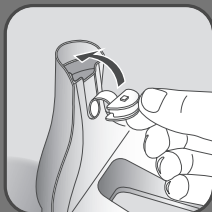
- Your appliance was designed to operate using untreated tap water.

However, it is necessary to periodically clean the appliance to remove any mineral deposits.

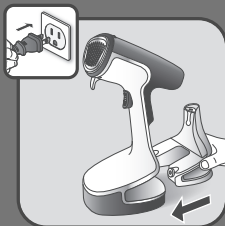
- Do not use pure demineralised or pure distilled water, water containing additives, water from clothes dryers, scented or softened water, rain water, filtered, bottled or boiled water, water from refrigerators, batteries or air conditioners as these may damage the appliance. These types of water contain organic waste, mineral elements that become concentrated when heated and cause spitting, brown staining, leaking or premature wear on your appliance. If your water is very hard, mix 50% untreated tap water with 50% distilled water (available in hardware stores).



Fill the water tank with a maximum of 200 ml of untreated tap water.



Close the water inlet stopper.



Return the water tank to its place on the appliance then plug it in. Make sure that the water tank is fully set in place.

As steam is very hot: never attempt to remove creases from a garment while it is being worn, always hang garments on a clothes hanger.



Hang your garment on a clothes hanger.

2 ACCESSORIES



The door hook allows to hang your garment for steaming.



The fabric brush opens the weaves of the fabrics for better steam penetration.

Before removing or attaching the steam brush, unplug your appliance and allow it to cool down, for one hour.



The steam cover filters water impurities and protects fabrics from water drips.

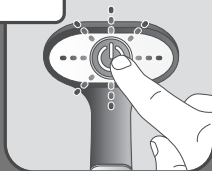
Before removing or attaching the steam cover, unplug your appliance and allow it to cool down for one hour.

3 USE

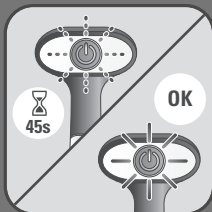


During use or while unit is heating or cooling, do not rest appliance on its head. Place the product on a stable, heat resistant, flat surface, as the head will be hot. As the appliance heats, the housing becomes warm. This is normal.

ON



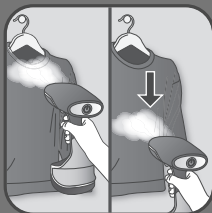
Switch on the appliance.



Wait until the light stops flashing (approximately 45 seconds). When the light is steady the appliance is ready to use.



Press the steam button with the steam brush facing away from you holding it in a vertical position.



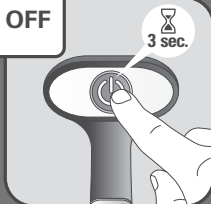
For optimal use, pass the steam jets over your garment from top to bottom.



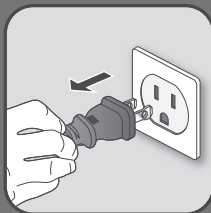
For continuous steam, lock the steam trigger by pushing the switch down.

if you need to refill the water tank during use, please refer to 'Before Use' Section.

OFF



Press and hold the On/Off button for 3 seconds to switch the appliance off.



Unplug the appliance.



Wait for an hour for your appliance to cool before storing.

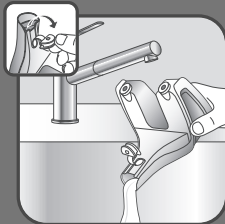
4 AFTER USE



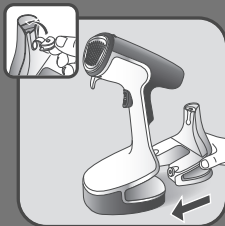
After use or while unit is cooling down, place the product on a flat, stable, heat resistant surface.



Remove the water tank.



Empty the water tank completely.



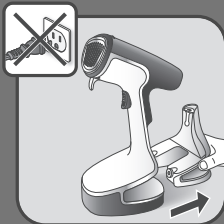
Return the water tank to its place on the appliance.

5 EASY DESCALING

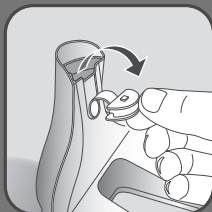


We advise you to do this operation in a vented room

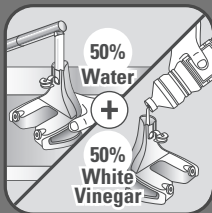
Remove the water tank.



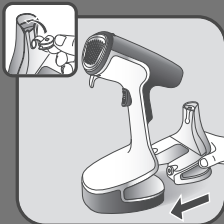
Remove the water inlet stopper.

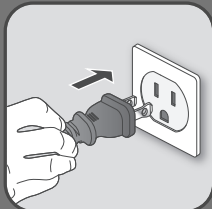


Fill the water tank with 50 % water and 50 % white vinegar.
Do not use other descaling products.



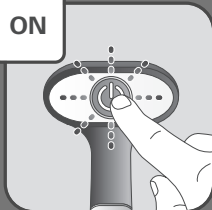
Return the water tank to its place on the appliance.
Make sure the water tank is fully set in place.



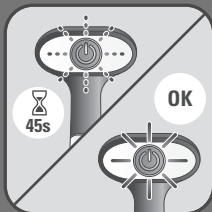


Plug-in the appliance.

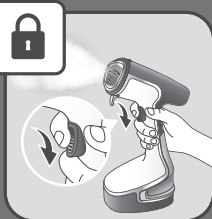
ON



Switch on the appliance.



Wait until the light stops flashing (approximately 45 seconds). When the light is steady the appliance is ready to use.



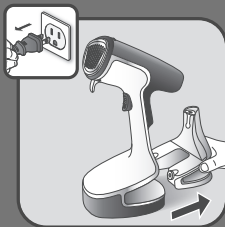
Put the steam trigger in the locked position.
Place the product on a flat, stable, horizontal and heat resistant surface.



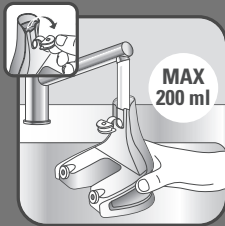
Allow the appliance to run until the water tank has completely emptied.



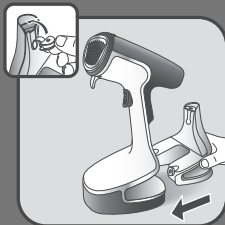
Press and hold the On/Off button for 3 seconds to switch the appliance off.



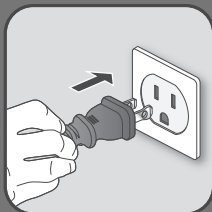
Unplug the appliance and pull the water tank out.



Remove the water inlet stopper and fill the water tank with a maximum of 200 ml of untreated tap water.

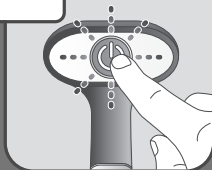


Return the water tank to its place on the appliance.
Make sure the water tank is fully set in place.

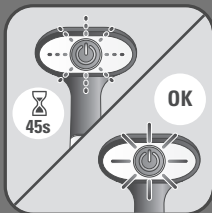


Plug in the appliance.

ON



Switch on the appliance.



Wait until the light stops flashing (approximately 45 seconds). When the light is steady the appliance is ready.



Put the steam trigger in the locked position.
place the product on a flat, stable, horizontal and heat resistant surface.



STANDBY MODE

- 1) For your safety, the steambrush is fitted with a standby monitoring system, which is activated automatically after approximately 8 minutes without use.
- 2) Only the 'On-Off' button flashes slowly to indicate that the appliance is on standby
- 3) To reactivate the steambrush :
 - a. Press the ' On-Off ' button and wait that the button light stops flashing
 - b. You can start steaming again

IS THERE A PROBLEM ?

PROBLEMS	POSSIBLE CAUSES	SOLUTIONS
There is no steam.	The appliance is not plugged in, or not switched on.	Check that your appliance is correctly plugged in and switched on.
	The water level is too low.	Unplug your appliance and refill it.
	The steam pump has not been primed.	Press the steam trigger continuously for a few seconds to begin steaming.
	You are using the appliance for the first time.	Press the steam trigger continuously for a few seconds to begin steaming.
	The water tank is not fully in place.	Ensure that stopper is closed and that the water tank snaps when put into place.
	The appliance is on standby mode.	PLEASE REFER TO THE 'STANDBY' section.
The appliance does not heat.	It is not plugged in, or not switched on.	Plug in your appliance and switch on.
	The appliance is on standby mode.	PLEASE REFER TO THE 'STANDBY' section.
Water leaks.	The water tank is not fully in place or the stopper is not closed properly.	Ensure that stopper is closed and that the water tank snaps when put into place.
Steam rate decreases.	Calc Sealing.	Refer to 'ANTI CALC' section in instructions for use.
The steam leaves stains on the fabric or the appliance spits.	You are using water with additives.	Never add any additive in the water tank.
	The appliance has not been cleaned enough after the descaling operation.	Read carefully the 'ANTI CALC' section in instructions for use.
	You are using other liquids than white vinegar to descale the product.	Use only white vinegar during 'ANTI CALC' procedure.
Appliance steams continuously.	The steam trigger is on the lock position.	Unlock the steam trigger.

