

intuos[®]2

USER'S MANUAL FOR WINDOWS[®]

Navigation

Contents

Index

WACOM[®]



All rights reserved. No part of this manual may be reproduced except for your express personal use. Wacom reserves the right to revise this publication without obligation to provide notification of such changes. Wacom does its best to provide current and accurate information in this manual. However, Wacom reserves the right to change any specifications and product configurations at its discretion, without prior notice and without obligation to include such changes in this manual.

TRADEMARKS

Wacom and Intuos are registered trademarks. Tool ID, QuickPoint, DuoSwitch, and DualTrack are trademarks of Wacom Company, Limited. Acrobat® Reader Copyright © 1987-2001 Adobe Systems Incorporated. All rights reserved. Adobe, Acrobat, and Photoshop are trademarks of Adobe Systems Incorporated which may be registered in certain jurisdictions. Microsoft, IntelliMouse, Windows, and Windows NT are either registered trademarks or trademarks of Microsoft Corporation in the United States and/or other countries. Any additional company and product names mentioned in this documentation may be trademarked and/or registered as trademarks. Mention of third-party products is for information purposes only and constitutes neither an endorsement nor a recommendation. Wacom assumes no responsibility with regard to the performance or use of these products.



Contents



Index

RADIO AND TELEVISION INTERFERENCE

The equipment described in this manual generates, uses, and can radiate radio-frequency energy. If it is not installed and used properly—that is, in strict accordance with Wacom instructions—it may cause interference with radio and television reception.

FCC NOTICE

This equipment has been tested and found to comply with the limits for a Class B digital device, pursuant to Part 15 of FCC Rules. These limits are designed to provide reasonable protection against harmful interference in a residential installation.

This equipment generates, uses and can radiate radio frequency energy and, if not installed and used in accordance with the instructions, may cause harmful interference to radio communications. However, there is no guarantee that interference will not occur in a particular installation.

You can determine whether the tablet is causing interference by powering it off. If the interference stops, it was probably caused by the tablet.

If your tablet does cause interference to radio or television reception, you may be able to correct the interference by using one or more of the following measures:

- Rotate the television or radio antenna until the interference stops.
- Move the tablet farther away from the television or radio.
- Plug the tablet and computer into an outlet that is on a different circuit from the television or radio.

If necessary, consult your Wacom dealer or an experienced radio/television technician for help.

Changes or modifications to this product not authorized by Wacom could void the FCC Certification and negate your authority to operate the product.



Contents

Index

CE DECLARATION

The Intuos® 2 digitizing tablets, models XD-0405-R, XD-0608-R, XD-0912-R, XD-1212-R, XD-1218-R, XD-0405-U, XD-0608-U, XD-0912-U, XD-1212-U, and XD-1218-U have been tested and found to comply to the following harmonized European Norms:

- EN 55024 (electromagnetic immunity)
- EN 55022 Class B (electromagnetic emissions)

The Wacom power adaptors have been tested by their manufacturers and found to comply to the following harmonized European Norms:

- EN 50082-1 (electromagnetic immunity)
- EN 55022, EN 50081-1, EN 61000-3-2, or EN 61000-3-3 (electromagnetic emissions)
- EN 60950 (safety of low voltage devices)

Based on the results of these tests, Wacom declares that the above mentioned devices conform to Article 10.1 of the European Council Directive 89/336/EEC and to the European Council Directive 73/23/EEC, and indicates this conformity by the CE-sign on each device.

The device must be installed and operated always in strict accordance to the instructions given in this handbook. Any changes or modifications to this product that were not specifically authorized by Wacom will invalidate this declaration.



Contents

Index

TABLE OF CONTENTS

Trademarks	2	Using the Airbrush	35
Radio and Television Interference	3	Holding the Airbrush	36
FCC Notice	3	Using the 2D Mouse	37
CE Declaration	4	Using the 4D Mouse	38
About the Manual	8	Using the 2D Mouse or 4D Mouse Fingerwheel	39
Navigating the Manual	11	Using the Lens Cursor	40
USING INTUOS2	12	Caring for Your Tools and Tablet	41
Appearance and Features	13	Replacing the Pen or Airbrush Tip	42
Intuos2 4x5 / A6 Tablet	13	DuoSwitch Removal and Installation	43
Intuos2 6x8 / A5 and 9x12 / A4-regular Tablets	14	CUSTOMIZING	45
Intuos2 12x12 / A4-oversize and 12x18 / A3 Tablets	15	Opening the Control Panel	46
Intuos2 Tools	16	Control Panel Features	47
Setting Up Your Work Area	19	Tabs	48
Working with the Tablet	20	Control Panel Lists	50
Adjusting the Pen Stand	20	Control Panel Buttons	52
Adjusting Tablet Incline	21	Customizing Your Tools	53
Using The Tablet Menu Strip	22	Pen and Airbrush Tabs	53
Using the Pen	25	2D Mouse and 4D Mouse Tabs	53
Holding the Pen	25	Customizing Pen and Airbrush Settings	54
Pointing	26	Adjusting Tip Feel	55
Clicking	27	Adjusting Double-Click	56
Using the Side Switch	28	Customizing Tool Buttons	57
Dragging	29	Button Functions	58
Proximity	30	Airbrush Settings	63
Drawing with Pressure	31	Adjusting Eraser Feel	64
Drawing with Tilt	32	Customizing Tilt Sensitivity	65
Erasing	33		
Eye-Hand Coordination Exercise	34		



Customizing Mouse Tool Settings	66	Pull-Down Menus	97
Customizing the 2D Mouse	67	File	97
Customizing the 2D Mouse Fingerwheel	68	Edit	97
Customizing the 4D Mouse and Lens Cursor	69	Add	98
Programming the 4D Mouse and Lens Cursor	70	Remove	98
Creating a Button Box	70	Language	99
Customizing the 4D Mouse Fingerwheel	71	Help	99
Tablet to Screen Mapping	72	ADVANCED FEATURES	100
Positioning Mode	74	Advanced Tip Pressure Settings	101
Orientation	75	Click Force Adjustment	102
Aspect	76	Pressure Curve Adjustment	103
Tablet Area	77	Advanced Eraser Pressure Settings	105
Display Area	80	Copying Settings	106
Customizing the Pop-up Menu	81	Using DualTrack	107
Add Keystrokes	82	Advanced Mapping	108
Setting Mouse Speed	82	HAVING TROUBLE?	113
Add Mapping Options	83	Troubleshooting	114
Removing Pop-Up Menu Options	83	Testing USB Tablets	114
Customizing Tablet Buttons	84	Verifying Your Computer is USB Ready	115
Working with Multiple Tools	86	Testing Serial Tablets	116
Adding a New Tool	87	Testing Your Intuos2 Tools	117
Using More Than One Tool	88	Testing a Pen or Airbrush	117
Working with Application-Specific Settings	89	Testing a 2D Mouse	119
Creating an Application-Specific Setting	91	Testing a 4D Mouse or Lens Cursor	120
Adding Additional Tools to an Application's Tool List	93	Troubleshooting Tables	121
Changing Settings for a Specific Application and Tool	94	USB Tablet Problems	121
Removing Application-Specific Settings	94	Serial Tablet Problems	122
Checking Your USB Tablet Mode	95	General Problems	123
Checking Your Serial Tablet Connection	96	Windows Problems	126



Contacting Technical Support	127	Intuos2 Classic Pen (Model XP-300E)	142
Linking to the Web Page	127	Intuos2 Ink Pen (Model XP-110)	142
Pre-Contact Checklist	127	Intuos2 Stroke Pen (Model XP-120)	143
Who to Call	128	Intuos2 2D Mouse (Model XC-100)	143
USA, Canada, Central and South America	129	Intuos2 4D Mouse (Model XC-400)	143
Europe, Middle East and Africa	130	Intuos2 Lens Cursor (Model XC-210)	143
Japan	131	Parts and Accessories	144
Asia Pacific (English)	131	Ordering Parts and Accessories	144
APPENDICES	132	Tablets	145
Uninstalling the Software	133	Tools	145
Registration	133	Other Parts and Accessories	148
Product Information	133	License and Warranties	149
Installing Multiple Tablets	134	Software License	149
Working with AutoCAD	135	Limited Warranty	150
Configuring for a Wintab Compatible Digitizer	135	Warranty on Sales Outside of U.S. and Canada	152
Configuring Tablet Menus and Screen Pointing Areas in AutoCAD	136	License and Warranties (Europe)	153
Product Specifications	139	Software License Agreement	153
General Specifications for All Intuos2 Tablets	139	Limited Warranty and Liability	154
Intuos2 4x5 / A6 Tablet (Models XD-0405-U, XD-0405-R)	140	Liability of WACOM	155
Intuos2 6x8 / A5 Tablet (Models XD-0608-U, XD-0608-R)	140	GLOSSARY	156
Intuos2 9x12 / A4-regular Tablet (Models XD-0912-U, XD-0912-R)	140	INDEX	160
Intuos2 12x12 / A4-oversize Tablet (Models XD-1212-U, XD-1212-R)	141		
Intuos2 12x18 / A3 Tablet (Models XD-1218-U, XD-1218-R)	141		
Intuos2 Grip Pen (Model XP-501E)	141		
Intuos2 Airbrush (Model XP-400E)	142		



Contents



Index



TABLE OF CONTENTS

Page 7

ABOUT THE MANUAL

This interactive User's Manual provides quick access to information about Intuos2. Just click on a navigation button or highlighted word to move through the document. The information is common to both serial and USB tablets, unless otherwise noted.

- The [Table of Contents](#) enables you to go directly to a topic by clicking on it.
- [Using Intuos2](#) introduces you to the many capabilities of your Intuos2 tablet, including a description of the various tablet models, and the features and functions of each Intuos2 tool. This section also includes exercises for new users.
- [Customizing](#) describes how you can change the control panel settings to optimize Intuos2 tablets and tools for your personal work style.
- [Advanced Features](#) allow further customization of your Intuos2 Professional Graphics Tablet. Explore them after you have become familiar with using Intuos2 and the basic control panel settings.
- [Having Trouble?](#) Need troubleshooting guidelines? Do you have a question for Technical Support? You will find the answers to most common questions here.
- The [Appendices](#) include information on uninstalling and registering your tablet, product specifications, license and warranty information, and a listing of replacement parts and accessories. There are tips on working with AutoCAD. If you are using more than one tablet on your computer, you will find instructions on adding and working with multiple tablets.

Note: This manual does not contain information on installing your tablet. Please refer to your product Quick Start Guide and to the automated software installer (located on the Wacom Tablet CD) for details on installing your Wacom tablet.

If you are new to electronic documentation, be sure to read [Navigating the Manual](#).



Contents



Index

The tablet size descriptions shown within this manual reflect usage for both the USA and European markets, and are separated by a “/”. For example, in the descriptor “4x5/A6”, “4x5” is the tablet sizing descriptor for USA markets. “A6” is the descriptor for European markets. Within this manual, USA tablet size descriptors are always shown before the “/”.

SMALL CAPITAL LETTERS are used to identify the names of keyboard keys, dialog boxes, and control panel options.

As you read through the *Customizing* and *Advanced Features* chapters, you will notice that the screen shots of the control panel tabs do not show the [tab buttons](#). These are intentionally left out in order to save space within the manual.

Remember that you can always use the Acrobat Reader zoom-in tool to increase the size of the manual on your display screen.



Contents

Index

Certain kinds of information are not included in this manual:

- Information about your specific computer hardware.
- Information about your operating system.
- Information about other Wacom tablets.
- Information about application software. Many graphics applications have built-in support for Intuos2 features (such as pressure-sensitivity, tilt, airbrush simulation, 3D navigation with the 4D Mouse, and two-handed input). You can find a listing of applications that support these features at Wacom's web site (see [Product Information](#)). Refer also to your application manuals for information on how best to use Intuos2 features within specific applications.

Your best source for the above information is the set of manuals and disks that came with your hardware, operating system, applications, or other Wacom tablets.



Contents

Index

NAVIGATING THE MANUAL

Use the navigation controls to move through the manual:



Go to front page.



Go to Table of Contents.



Go to Index.



Go back to previous view.



Page back, or page forward.



HEADING TEXT Go to beginning of section.

Topic

Go to topic.



Topic continued.

The Acrobat Reader provides you with additional tools for using and printing the manual. Refer to the *Acrobat Reader Online Guide* for more information.



Contents

Index

USING INTUOS2

This section introduces you to the Intuos2 Professional Graphics Tablet. If you are new to using a graphics tablet and tablet input tools, read the following sections. They describe your Intuos2 tools and explain how to use them with the tablet.

Note: The tablet input tools that came with your Intuos2 tablet will not work on any other tablet model (including tablets from the Intuos series). Likewise, older Intuos tablet input tools will not work on your Intuos2 tablet.

[APPEARANCE AND FEATURES](#)

[SETTING UP YOUR WORK AREA](#)

[WORKING WITH THE TABLET](#)

[USING THE PEN](#)

[USING THE AIRBRUSH](#)

[USING THE 2D MOUSE](#)

[USING THE 4D MOUSE](#)

[USING THE LENS CURSOR](#)

[CARING FOR YOUR TOOLS AND TABLET](#)



Contents

Index

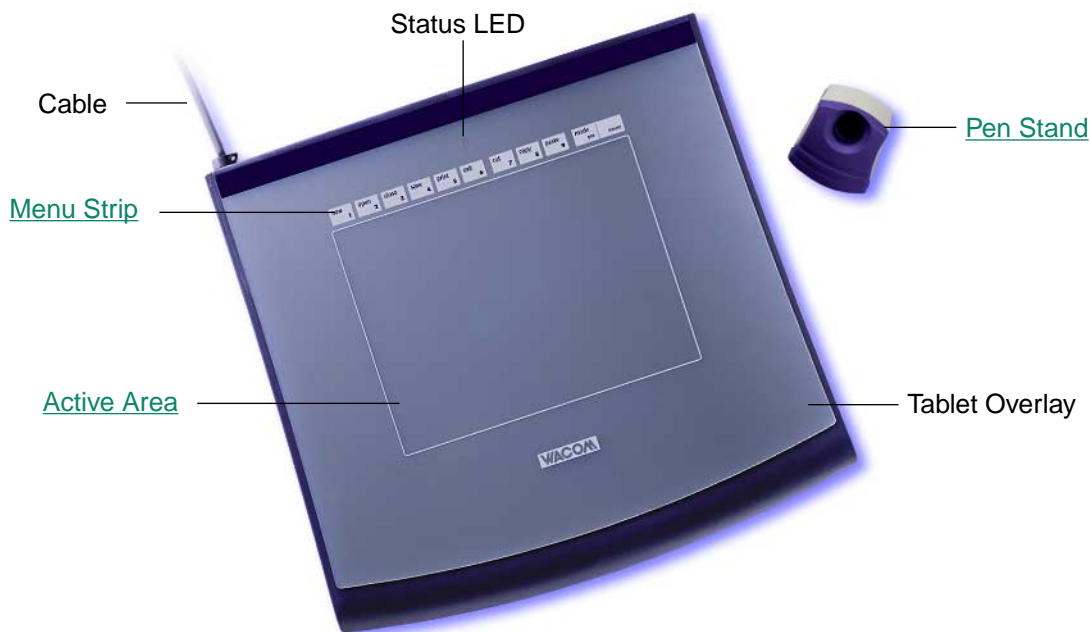
USING INTUOS2

Page 12

APPEARANCE AND FEATURES

The Intuos2 Professional Graphics Tablet consists of two basic elements: a graphics tablet that serves as your work area, and the [Intuos2 Tools](#) you use with the tablet. For a complete listing of Intuos2 tablets, refer to [Parts and Accessories](#).

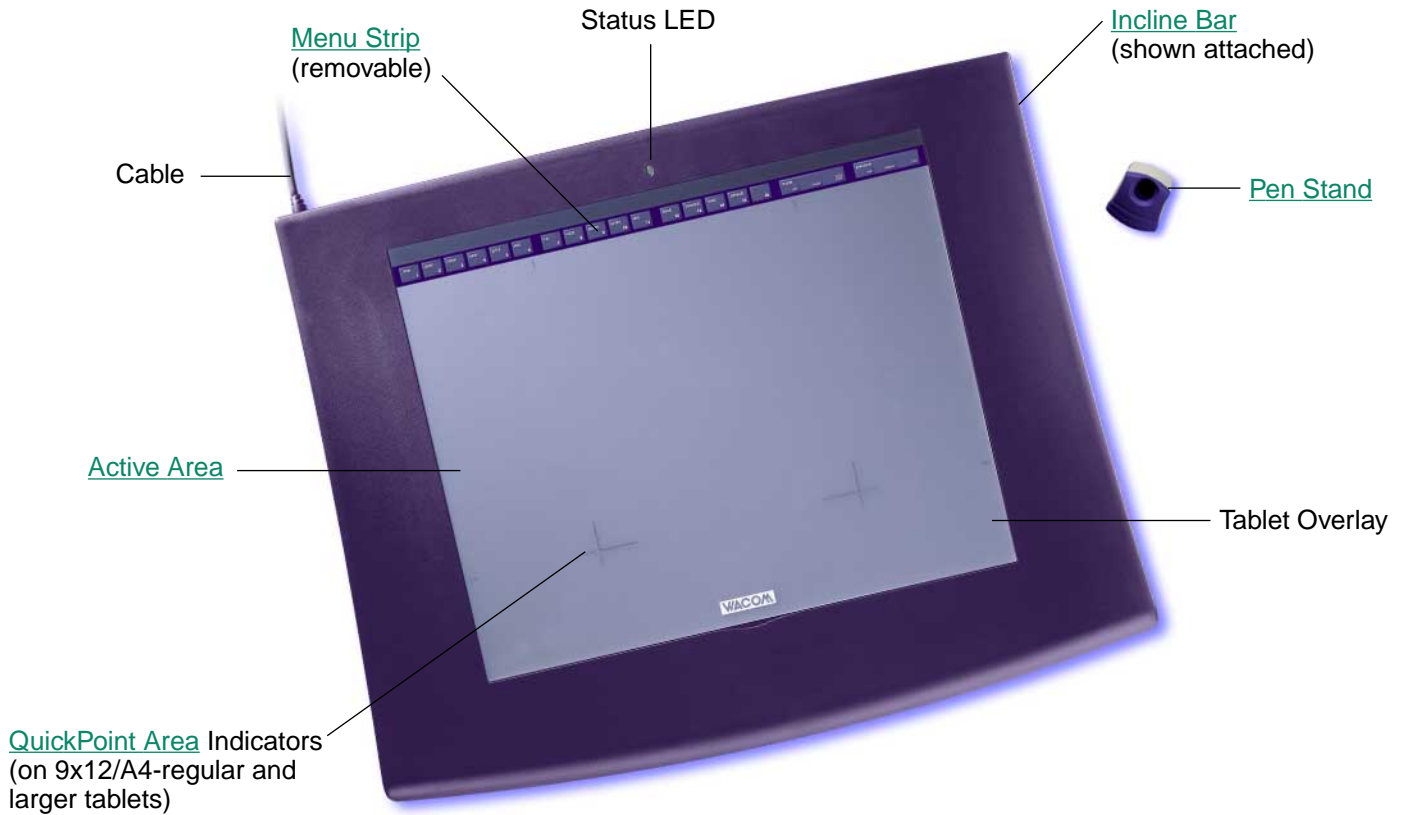
INTUOS2 4x5/A6 TABLET



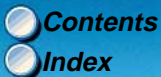
Note: To learn more about your tablet, see [Working with the Tablet](#).



INTUOS2 6x8/A5 AND 9x12/A4-REGULAR TABLETS



Note: The Intuos2 9x12/A4-regular tablet is shown. To learn more about your tablet, see [Working with the Tablet](#).



INTUOS2 12x12/A4-OVERSIZED AND 12x18/A3 TABLETS



Note: The Intuos2 12x12/A4-oversize tablet is shown. To learn more about your tablet, see [Working with the Tablet](#).



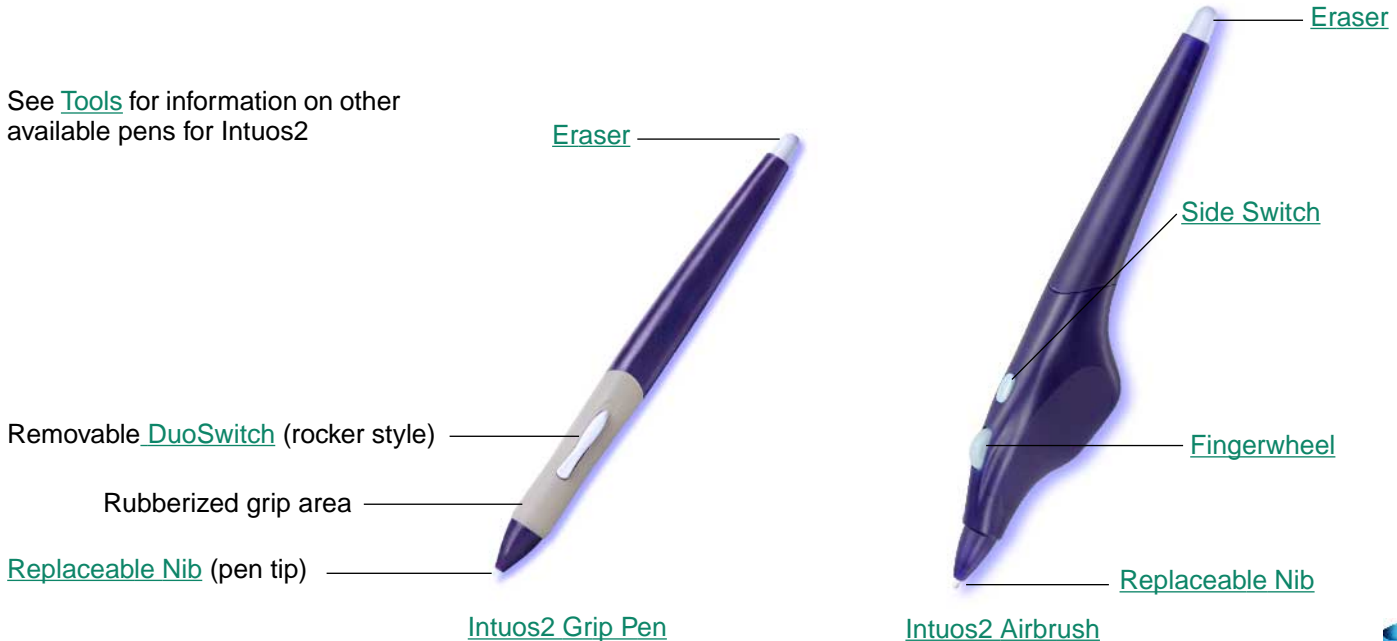
INTUOS2 TOOLS

A variety of Intuos2 tools are available for your tablet. All Intuos2 tools are cordless, batteryless, and ergonomically designed. Each tool also has a [Tool ID](#), enabling you to work with multiple tools on the same tablet and to customize each tool differently.

Note: The tool(s) included with your tablet will vary depending on which tablet model and configuration you purchased.

The Intuos2 Grip Pen and Airbrush are pressure-sensitive freehand tools for image editing and creating natural-looking pen and brush strokes.

See [Tools](#) for information on other available pens for Intuos2



Do you prefer to use a mouse for general navigation, pointing, and clicking? Just set aside your Intuos2 Pen and place the Intuos2 Mouse on the tablet. There is no need to go back to your old mouse, because your Intuos2 Mouse is an ideal tool for performing any task you may have done previously with a standard mouse. If you have an Intuos2 4D Mouse, it can also be used for 3D navigation with four degrees of control: x and y position, fingerwheel position, and positional rotation.

Programmable Buttons



Note: Although the 2D Mouse has Tool ID, it does not support DualTrack, which enables you to work with two tools on the same tablet simultaneously.

2D Mouse

Fingerwheel. This is an integrated middle button and rolling wheel that can be programmed for a variety of actions, and that can also be used for up and down scrolling in the active window

Fingerwheel. This can be set to emulate the Microsoft IntelliMouse™ and used for scrolling, zooming, and other tasks in supporting applications.

Programmable Buttons



4D Mouse



Contents
Index

The Lens Cursor is an ideal tool for entering precise coordinate position information. Use the Lens Cursor with graphics and CAD applications for very accurate tracing or digitizing images.



[Lens Cursor](#)

For information on these and other available Intuos2 tools, refer to [Parts and Accessories](#).



SETTING UP YOUR WORK AREA

Organize your work area so you can work comfortably. Position your Intuos2 tablet, input tools, and keyboard so they are easily accessible without unnecessary reaching. Your monitor should be positioned so you can view it comfortably with a minimum of eyestrain.



To minimize fatigue:

- Take short breaks between tasks to stretch and relax your muscles.
- Use a gentle grip when working with your Intuos2 tools.
- Alternate tasks and tools throughout the day.
- Minimize awkward postures and repetitive movements that cause discomfort.

For some tablet models, you can adjust the tablet incline and attach the pen stand to better fit your work style. Refer to [Adjusting Tablet Incline](#) and [Adjusting the Pen Stand](#) for additional information.



WORKING WITH THE TABLET

Your tablet comes with a pen stand, a customizable menu strip, and a transparent overlay.

ADJUSTING THE PEN STAND

Position the pen stand near the tablet.



4x5/A6 tablet shown.

The stand is free-standing. Place it within easy reach of your tablet.



Contents

Index



USING INTUOS2

Page 20

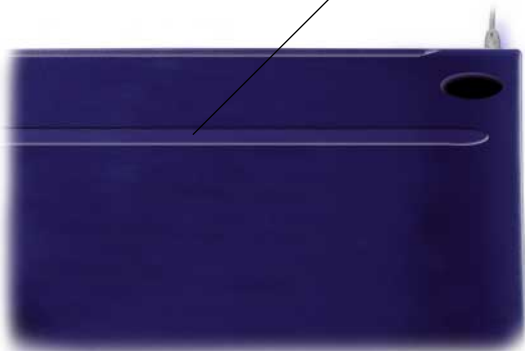
ADJUSTING TABLET INCLINE

Intuos2 6x8/A5 and 9x12/A4-regular tablets come with a rubber bar that can be used to raise the tablet's incline angle. If you frequently use the tablet on your lap, you may not want to apply the incline bar. For desktop use, you may find an inclined tablet position more comfortable.

To attach the incline bar:

1. First turn the tablet upside down and locate the incline bar recess.
2. Remove the paper backing from the incline bar to expose the adhesive. Carefully press the bar's adhesive side onto the tablet recess area.
3. Return the tablet to its face up position.

The recess is designed for use in landscape orientation.



Contents

Index



USING INTUOS2

Page 21

USING THE TABLET MENU STRIP

All Intuos2 tablets have a menu strip with programmable buttons that allow you to quickly perform common tasks. For 4x5/A6 tablets, the menu strip is printed on the overlay sheet. For 6x8/A5 and larger tablets, the menu strip is removable, and can be written on with a pencil. The number of available buttons depends on your tablet model. To use the menu strip, click on a button with your Intuos2 tool; the function assigned to that button will occur.





To remove the menu strip, carefully lift the overlay sheet from the left side and gently slide the menu strip out. You can use the adhesive side of a sticky notepad sheet to “grab” the menu strip. When removing and replacing the menu strip, take care not to bend or tear your tablet overlay.

Notes:

- When pointing to a button, the screen cursor changes to display the button number. Tablet buttons that have been set to IGNORED will not display the button number.
- Changes to mapping and pressure options apply only to the tool used to select the respective tablet button.



To customize the tablet menu strip buttons, see [Customizing Tablet Buttons](#). By default, the tablet menu strip buttons will perform common keystroke functions, such as:

Button name	Keyboard shortcut	Function (typical)
new	Ctrl+N	Open a new document
open	Ctrl+O	Open an existing document
close	Alt+F, C	Close a document
save	Ctrl+S	Save work
print	Ctrl+P	Print document
exit	Alt+F, X	Exit application
cut	Ctrl+X	Cut text or image
copy	Ctrl+C	Copy text or image
paste	Ctrl+V	Paste text or image
undo	Ctrl+Z	Undo last change
del	Del	Delete selected image or text
Back	Alt+ 	Set button for internet browser back function (6x8/A5 or larger tablets)
Forward	Alt+ 	Set button for internet browser forward function (6x8/A5 or larger tablets)
Stop	Esc	Set button for internet browser stop function (9x12/A4-regular or larger tablets)
Refresh	Ctrl+R	Set button for internet browser refresh function (9x12/A4-regular or larger tablets)



Contents



Index



USING INTUOS2

Page 23

Button name	Keyboard shortcut	Function (typical)
Mode		
Pen	N/A	Set tool mapping to Pen Mode
Mouse	N/A	Set tool mapping to Mouse Mode
QuickPoint	N/A	Set tool mapping to QuickPoint Mode (9x12/A4-regular or larger tablets)
Pressure		
Soft	N/A	Set the tip feel for a soft setting
Med	N/A	Set the tip feel for a medium setting
Firm	N/A	Set the tip feel for a firm setting

Notes: Some applications may not support some tablet button functions, or may use different keyboard shortcuts. Mapping and pressure settings changed with a tablet button are only in effect for the current session. To permanently save these settings, open the control panel and click OK.



Contents



Index



USING INTUOS2

Page 24

USING THE PEN

Intuos2 Pens are cordless, batteryless, and pressure sensitive. There are four basic techniques for using the Intuos2 Pen: pointing, clicking, double-clicking, and dragging. With a bit of practice, using the pen will become second nature to you. If you are unfamiliar with using a pen, try the exercises on the following pages.

HOLDING THE PEN

Hold the Intuos2 Pen like you would a normal pen. Make sure the DuoSwitch is in a convenient location where you can toggle it with your thumb or forefinger, but not accidentally press the switch while drawing. You can tilt the pen in any way that feels most comfortable for drawing.



Position for drawing



Position for erasing

Important: When the pen is not in use, place it in the Intuos2 pen stand or lay it flat on your desk. To maintain the sensitivity of your pen tip, do not store the pen in a container where it will rest on its tip.

Leaving an Intuos2 tool on the tablet may interfere with screen cursor positioning when using other pointing devices.



POINTING

The Intuos2 Pen positions the pointer (or cursor) on your screen. You can position the screen cursor two different ways, like a pen (Pen Mode) or like a mouse (Mouse Mode).

- In Pen Mode, the tablet's active area is like a mapped representation of your computer screen where every point on the tablet's active area corresponds to exactly one point on the display screen; wherever you place the pen on the tablet, the screen cursor will jump to the corresponding point on the screen. This is the default setting for the Intuos2 Pen and Airbrush, and makes tracing possible—something you cannot do with a mouse.
- In Mouse Mode, you move the cursor with a “pick up and roll” action similar to using a mouse. This is the default setting for the 2D Mouse, 4D Mouse, and Lens Cursor.

Try moving the screen cursor by lifting the Intuos2 Pen and placing it in a new location on the tablet. The cursor instantly jumps to the new location.

As the pen enters [Proximity](#), the tablet senses the pen above the tablet surface. You do not need to touch the tablet with the pen tip in order to move the screen cursor.

Learning Hint: If you are used to working with a mouse and find that using a pen is somewhat difficult, try the [Eye-Hand Coordination Exercise](#).

Pointing Hint: Pointing is easier when you orient the tablet so the screen cursor follows the same direction as your hand movements on the tablet.



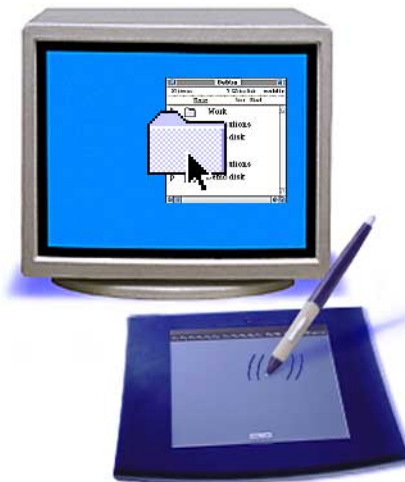
CLICKING

Clicking. To click, tap the tablet once with the tip of the Intuos2 Pen, or press the pen tip on the tablet with enough force to register a click. (With the pen tip, there is no audible “click” sound.)

Try clicking on a folder icon by moving the screen cursor over the icon and pressing down on the pen tip. The icon should highlight when you press.

Double Clicking. To double-click, quickly tap the tablet twice in the same place with the pen tip. This is like clicking twice with a mouse button. You can also double-click by pressing the upper side switch—this is the preferred method of double-clicking with a pen.

Try both ways of double-clicking on a folder icon to open it. First use your pen tip to do this, then use the upper side switch.



Contents

Index



USING INTUOS2

Page 27

USING THE SIDE SWITCH

The standard Intuos2 Pen is equipped with a DuoSwitch. This switch has two programmable functions that can be selected by rocking the switch in either direction. You can use the DuoSwitch whenever the pen tip is in [Proximity](#) of the tablet. You do not have to touch the pen tip to the tablet in order to use the switch.

The upper switch position is set to left double-click by default.

Windows Hint: Use right-click to bring up application-specific or icon-specific menus.

Double-Click Hint: Press the upper side switch to double-click. This is easier than tapping twice with the pen tip.



The lower switch position is set for a right-click by default.

Important: The DuoSwitch on the Grip Pen can be removed if you do not need the switch functionality. See [DuoSwitch Removal and Installation](#) for more information.

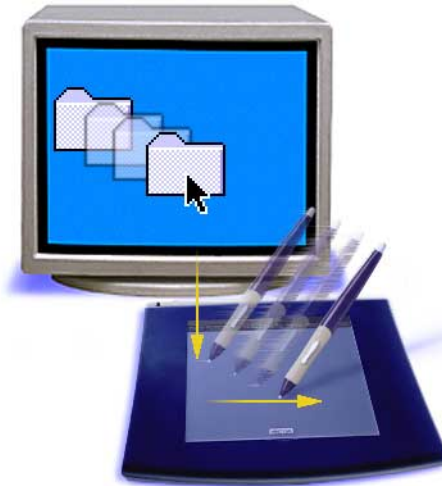
To assign new switch functions, refer to [Customizing Tool Buttons](#).



DRAGGING

Dragging is used to select and move objects on the screen. To drag, first point to an object. Then press the Intuos2 Pen to the tablet and slide it across the tablet. The selected object will move across the screen. To select text, move the screen cursor to the beginning of a text line, then drag the Intuos2 Pen across the tablet until the text is highlighted.

First, try moving an icon on the screen. Then, within a document, select some text by pressing and dragging the pen tip across the text.



PROXIMITY

The pen is activated as soon as it enters proximity, about 6 mm (0.24 inch), above the tablet's active area. This allows you to position the screen cursor or use the side switch without touching the pen tip to the tablet. You can also trace a drawing or photograph as long as the pen tip remains within proximity height.

Place a picture under the tablet overlay and try tracing it from within one of your graphics applications.



Contents

Index



USING INTUOS2

Page 30

DRAWING WITH PRESSURE

The Intuos2 Pen responds to the nuance and inflection of your hand movements, enabling you to create natural-looking pen and brush strokes. Many graphics applications have drawing tools that respond to the pressure you place on the pen. For example, in some drawing programs sliders are used to vary brush characteristics (width, color, and opacity). These characteristics can be controlled much better by the Intuos2 Pen's pressure-sensitivity. You can vary line width, blend colors, and change opacity with the pressure you exert upon the pen.

To draw with pressure-sensitivity, select a pressure-sensitive tool from your application's tool palette. Draw along the surface of the tablet while applying various amounts of pressure downward on the tip of the Intuos2 Pen. Press hard for thick lines or dense color. Press gently for thin lines or softer color. To adjust the tip feel, see [Adjusting Tip Feel](#).



Visit our web site for a list of graphics applications that support pressure. See [Product Information](#).

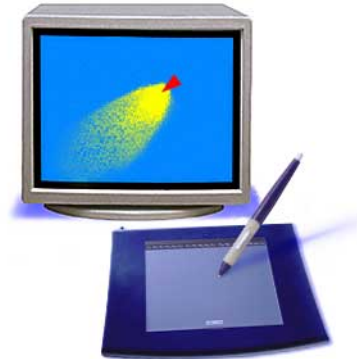


DRAWING WITH TILT

As with pressure, the tablet recognizes when you tilt the pen or airbrush from vertical to inclined positions. In some drawing applications, tilt can be used to control line shape and thickness. This is like working with an airbrush where tilt can be used to make a line thin when the tool is vertical, or wide when the tool is tilted. In other applications, you can adjust tilt to define brush characteristics such as width, color and opacity.

To test tilt, draw a curve in a graphics application (such as Painter) that supports tilt. Be sure that the tilt function in your application is active, then change the tilt of the pen as you draw to vary the shape and thickness of the brush stroke.

As an example, with the Wacom PenTools Virtual Airbrush Photoshop plug-in, tilting the pen results in an elongated pattern. This simulates the effects of an airbrush spray that is angled away from the paint surface.



To adjust how much you must tilt the pen to produce a desired tilt effect in your application, see [Customizing Tilt Sensitivity](#).

Not all applications support tilt. To see a list of applications which currently support this feature, visit our web site. See [Product Information](#).



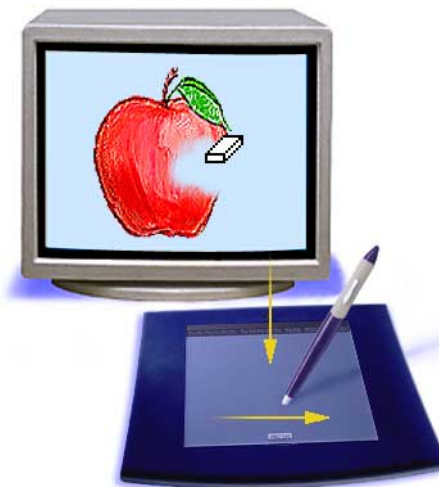
[Contents](#)
[Index](#)



USING INTUOS2
Page 32

ERASING

The eraser on the Intuos2 Pen works like the eraser on a pencil. In graphics applications that support the pen's eraser, you can erase intuitively and naturally. When you use the pen's eraser, the application will automatically switch to the eraser tool. You can also use the eraser in many standard office applications. The eraser will not be pressure sensitive, but you can use it to select and delete text or spreadsheet cells.



Try your eraser by opening Windows Notepad and typing a few words. Use the eraser to select the text. When you lift the eraser, the text will be erased. For further information on using your eraser, see [Adjusting Eraser Feel](#).

Visit our web site for a list of graphics applications that support the eraser (see [Product Information](#)). If the eraser is not supported in an application, you can still use the eraser for navigating and drawing.



Contents



Index



USING INTUOS2

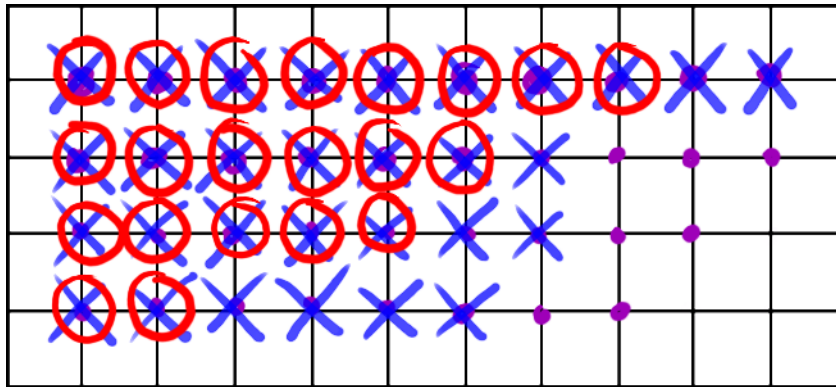
Page 33

EYE-HAND COORDINATION EXERCISE

If you use a mouse, you may remember how long it took to get used to positioning the screen cursor. Your Intuos2 Pen, likewise, will take a bit of practice to master the technique of positioning the screen cursor in [Pen Mode](#). This may seem difficult at first, but it is more natural and faster than in [Mouse Mode](#).

This exercise is designed to retrain your eye-hand coordination for using the Intuos2 Pen:

1. Open any graphics application. Use the line tool to draw a rectangular grid with line spacings of about 20-25 mm (3/4 to 1 inch). (You can use your traditional mouse to do this.)
2. Choose a free-hand tool in your application and use the Intuos2 Pen to draw a dot at each grid intersection.
3. Draw an X at each grid intersection.
4. Now draw a circle around each intersection. Your screen should look like this:



5. Clear your screen and make a simple drawing of your own. The more you use your Intuos2 Pen, the easier drawing and navigation will become. Soon, you may want to put your mouse away altogether.



USING THE AIRBRUSH

The Intuos2 Airbrush is similar to the Intuos2 Pen, but also includes a fingerwheel for an additional degree of control. With proper software support, you can simulate realistic airbrushing. For example, tilting the Intuos2 Airbrush can cause the spray pattern to elongate and feather out. Rolling the fingerwheel can adjust the spray intensity, and pressure on the tip can control the brush size.

[Pointing](#), [Clicking](#), [Erasing](#), and [Proximity](#) are similar to the pen. For additional information, refer to [Holding the Airbrush](#) and [Using the Pen](#).

Important: When the airbrush is not in use, place it in the Intuos2 pen stand or lay it flat on your desk. To maintain the sensitivity of your airbrush tip, do not store the airbrush in a container where it will rest on its tip.

Leaving an Intuos2 tool on the tablet may interfere with screen cursor positioning when using other pointing devices.



[Contents](#)

[Index](#)



USING INTUOS2

Page 35

HOLDING THE AIRBRUSH

Hold the airbrush with your thumb and middle finger. The fingerwheel should be in a convenient location for you to roll it with your index finger. Tilt the airbrush to find a comfortable position that allows you to paint and draw with pressure-sensitivity.

The side switch is set for a right-click by default.

Roll the fingerwheel backwards to increase ink flow or brush size, and forward to reduce it.

Your index finger should operate the wheel independently of the pressure you apply to the tip.



To customize the fingerwheel, see [Airbrush Settings](#).

Visit Wacom's web site to learn which applications currently support the airbrush fingerwheel. See [Product Information](#).



Contents

Index



USING INTUOS2

Page 36

USING THE 2D MOUSE

The Intuos2 2D Mouse is cordless, batteryless, and works on any Intuos2 tablet. By moving the 2D Mouse across the tablet's active area, you can position the screen cursor like you do with a regular mouse (MOUSE MODE). The buttons are programmable, and the integrated fingerwheel is both a programmable middle button and a rolling wheel that you can use for scrolling. By choosing PEN MODE in the MAPPING/SPEED tab, you can position and navigate the screen cursor like you do with the Intuos2 Pen.

Integrated middle button and fingerwheel. By default, the button function is set to MIDDLE CLICK and the fingerwheel is set to SCROLL 3 lines per wheel notch within the active window of supporting applications.

Important: When the 2D Mouse is not in use, place it on your desk. Leaving an Intuos2 tool on the tablet may interfere with screen cursor positioning when using other pointing devices.

The right button is set to a RIGHT CLICK by default.



The left button is set to LEFT CLICK by default.

Hint: For MS Office applications that support a wheel mouse, press the CTRL key and move the fingerwheel to zoom in and out.

To learn how to program buttons, see [Customizing the 2D Mouse](#).



USING THE 4D MOUSE

The Intuos2 4D Mouse is a cordless, batteryless mouse that works on any Intuos2 tablet. By default, you can position the screen cursor like you do with a regular mouse (MOUSE MODE). By choosing PEN MODE in the MAPPING/SPEED tab, you can position and navigate the screen cursor like you do with the Intuos2 Pen. The integrated fingerwheel is both a programmable middle button and a self-centering wheel that can be used for scrolling. By default, the fingerwheel emulates the Microsoft IntelliMouse. The 4D Mouse also supports axial rotation. In applications that support device rotation, simply turn the 4D Mouse on the tablet to control the rotation parameter.

The rear buttons are set to left double-click by default.

The right button is set to right-click by default.



By default, the fingerwheel is set to perform a middle-click when pressed. When rolled forward or backward, the fingerwheel is set for scrolling functionality in supporting applications.

The left button is set to left-click by default.

Important: When the 4D Mouse is not in use, place it on your desk. Leaving an Intuos2 tool on the tablet may interfere with screen cursor positioning when using other pointing devices.

To learn how to program buttons, see [Customizing the 4D Mouse and Lens Cursor](#).



USING THE 2D MOUSE OR 4D MOUSE FINGERWHEEL

To use the fingerwheel, place your hand on the 2D Mouse or 4D Mouse with your index finger on the wheel.

- **Button function.** To use the button function, press down on the wheel to perform a button click.
- **Scrolling.** The fingerwheel will control scrolling; move the fingerwheel forward to scroll up, and back to scroll down. For the 2D Mouse, the fingerwheel is set to scroll 3 lines for each notch of wheel movement in applications that support the Microsoft IntelliMouse wheel. For the 4D Mouse, the fingerwheel emulates the roller on the Microsoft IntelliMouse; moving the fingerwheel scrolls through documents in applications that support the IntelliMouse and scrolling stops when you release the fingerwheel. (When you release the fingerwheel on the 4D Mouse it will spring back to the neutral position, leaving the scrolled list at the position you have scrolled to.)
- For applications that have built-in support for the fingerwheel, you can set the fingerwheel for application-defined functionality; it will then function according to how each specific application supports the fingerwheel.



2D Mouse shown.

For a full description of fingerwheel features and functionality, see [Customizing the 2D Mouse Fingerwheel](#) or [Customizing the 4D Mouse Fingerwheel](#). Visit Wacom's web site for a list of applications that currently support the 2D Mouse or 4D Mouse fingerwheel. See [Product Information](#).



USING THE LENS CURSOR

The Intuos2 Lens Cursor is an input device that allows you to enter precise coordinate position information into your computer. The Lens Cursor reports the position of the cross-hair to the computer. This makes the Lens Cursor especially useful for tracing and digitizing drawings into graphics and CAD applications. By default, the Lens Cursor is set to MOUSE MODE, which means you can position the screen cursor like you do with a regular mouse. When using the Lens Cursor to digitize a drawing, the Lens Cursor must be set to PEN MODE.



Important: When the Lens Cursor is not in use, place it on your desk. Leaving an Intuos2 tool on the tablet may interfere with screen cursor positioning when using other pointing devices.

Refer to [Customizing the 4D Mouse and Lens Cursor](#) for information on programming the Lens Cursor buttons.



CARING FOR YOUR TOOLS AND TABLET

Keep your Intuos2 tools and tablet surface clean. Dust and dirt particles can stick to your Intuos2 tools and cause wear to the tablet surface. Regular cleaning with a soft, damp cloth will help prolong the life of your tablet surface and Intuos2 tools. You can also use a very mild soap diluted with water. Do *not* use volatile liquids, such as paint thinner or benzene, because they may damage the plastic case.

Keep your tablet and tools in a clean, dry place and avoid extremes in temperature. Room temperature is best. Also, your Intuos2 tools and tablet are not made to come apart. Except where specifically indicated for the Grip Pen DuoSwitch removal and replacement, twisting the pen case can break the pen. Taking apart the product will void your warranty.

Important: When the pen or airbrush are not in use, place them in the Intuos2 pen stand or lay them flat on your desk. To maintain the sensitivity of your pen or airbrush tip, do not store the tools in a container where they will rest on their tip.



Contents

Index



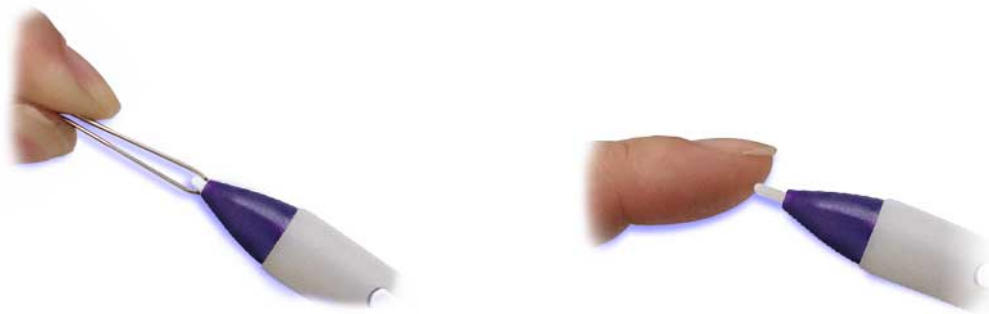
USING INTUOS2

Page 41

REPLACING THE PEN OR AIRBRUSH TIP

The tip (nib) will wear with normal use. When the nib gets too short or develops a flat point, you can replace it with the extra nib that came with your tool.

1. Clasp the old nib with a tweezer, needle-nosed plier, or similar instrument and pull it straight out of the pen or airbrush.
2. Slide the end of the new nib straight into the barrel of the pen or airbrush. Firmly push the nib until it stops.



To order replacement parts, refer to [Other Parts and Accessories](#).



DUOSWITCH REMOVAL AND INSTALLATION

Some users prefer to remove the DuoSwitch when working with the Intuos2 Grip Pen. For example, you may want to remove the switch in order to focus on a drawing and eliminate any accidental clicks that would occur if you unintentionally pressed on the switch. Note, however, that removing the DuoSwitch also removes the button functionality it offers. For most users it is unnecessary to remove the DuoSwitch.

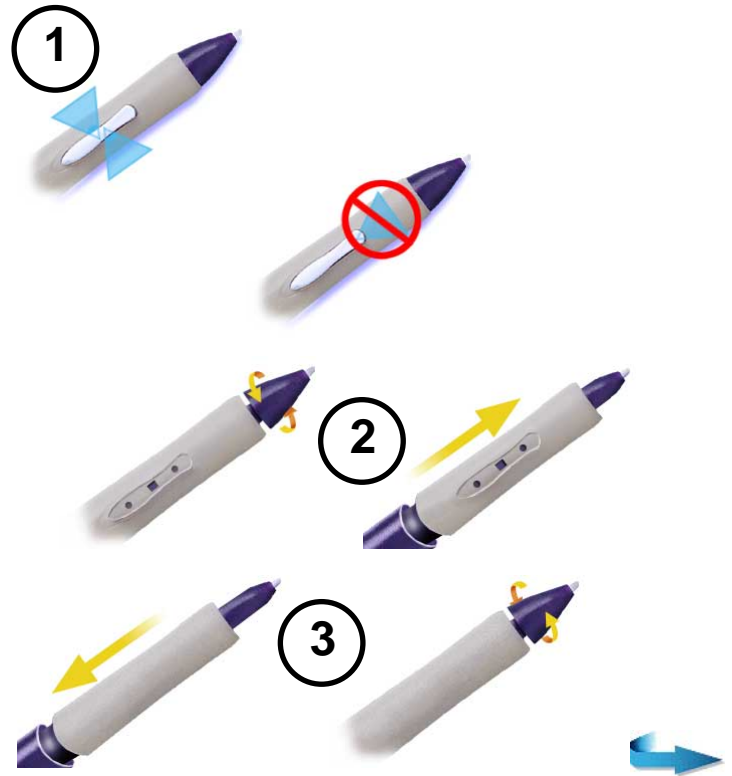
To remove the DuoSwitch:

1. Firmly clasp the DuoSwitch in the middle and pull out. (Press in on the rubberized grip in order to better grasp the switch).

Important: Do not remove the switch by prying it from either end as this may damage your pen. **NEVER** adjust the trimmer capacitor that will be visible when the switch is removed. When using the pen without the DuoSwitch, always replace the original rubberized grip with the optional grip in order to protect the trimmer capacitor.

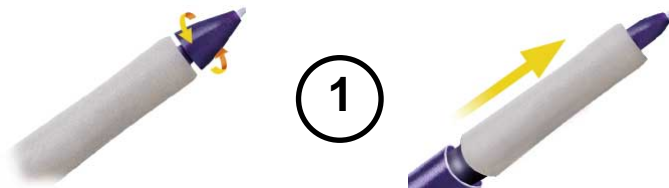
2. Remove the pen tip cone by turning it counterclockwise. Then pull the grip forward over the pen tip.

3. Install the optional grip by aligning the pen case rails with the grooves inside the grip and pushing the grip over the pen tip. Then replace the pen tip cone by turning it clockwise onto the pen.

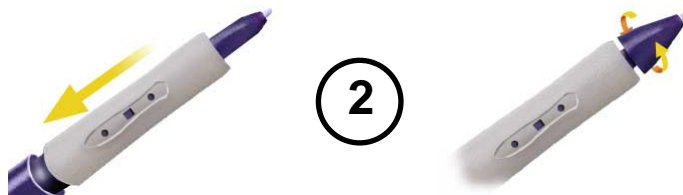


To install the DuoSwitch:

1. Remove the pen tip cone by turning it counterclockwise. Then pull the grip forward over the pen tip.



2. Install the original grip (the one with the DuoSwitch access slot) by aligning the pen case rails with the grooves inside the grip and pushing the grip over the pen tip. When properly positioned, the DuoSwitch access hole will reveal the trimmer capacitor. Then install the pen tip cone by turning it clockwise onto the pen.



3. Align the DuoSwitch into place, making sure to match the switch position to the grip molding. Then gently press in on the DuoSwitch until it snaps into place.



CUSTOMIZING

After you master the basics of using your Intuos2 Professional Graphics Tablet, you may want to customize the way Intuos2 works. This chapter describes how to use the Wacom control panel to adjust your Intuos2 tool and tablet settings.

Advanced users can learn how to further optimize Intuos2 by creating [application-specific settings](#).

[OPENING THE CONTROL PANEL](#)

[CONTROL PANEL FEATURES](#)

[CUSTOMIZING YOUR TOOLS](#)

[CUSTOMIZING PEN AND AIRBRUSH SETTINGS](#)

[CUSTOMIZING MOUSE TOOL SETTINGS](#)

[TABLET TO SCREEN MAPPING](#)

[CUSTOMIZING THE POP-UP MENU](#)

[CUSTOMIZING TABLET BUTTONS](#)

[WORKING WITH MULTIPLE TOOLS](#)

[WORKING WITH APPLICATION-SPECIFIC SETTINGS](#)

[CHECKING YOUR SERIAL TABLET CONNECTION](#)

[PULL-DOWN MENUS](#)



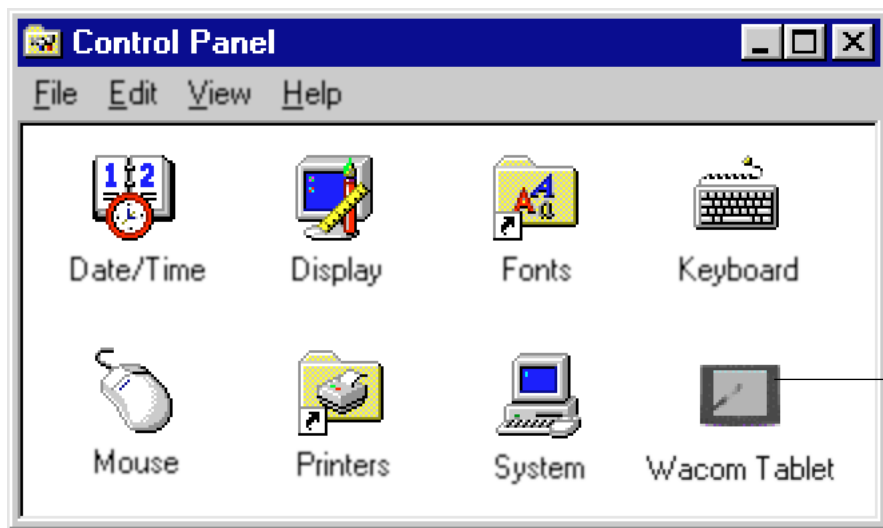
Contents

Index

OPENING THE CONTROL PANEL

Open the control panel with the Intuos2 tool you wish to customize.

1. Using your Intuos2 tool, click on the Windows START button. Then, select SETTINGS and CONTROL PANEL.
2. Double-click on the tablet icon.



To open the Wacom control panel, double-click here with the tool you wish to customize.

To open the control panel in Windows XP:

1. Click on the Windows XP START button. In the start menu, select CONTROL PANEL.
2. In the CONTROL PANEL window, select OTHER CONTROL PANEL OPTIONS.
3. In the OTHER CONTROL PANEL OPTIONS window, double-click on the WACOM TABLET icon.



CONTROL PANEL FEATURES

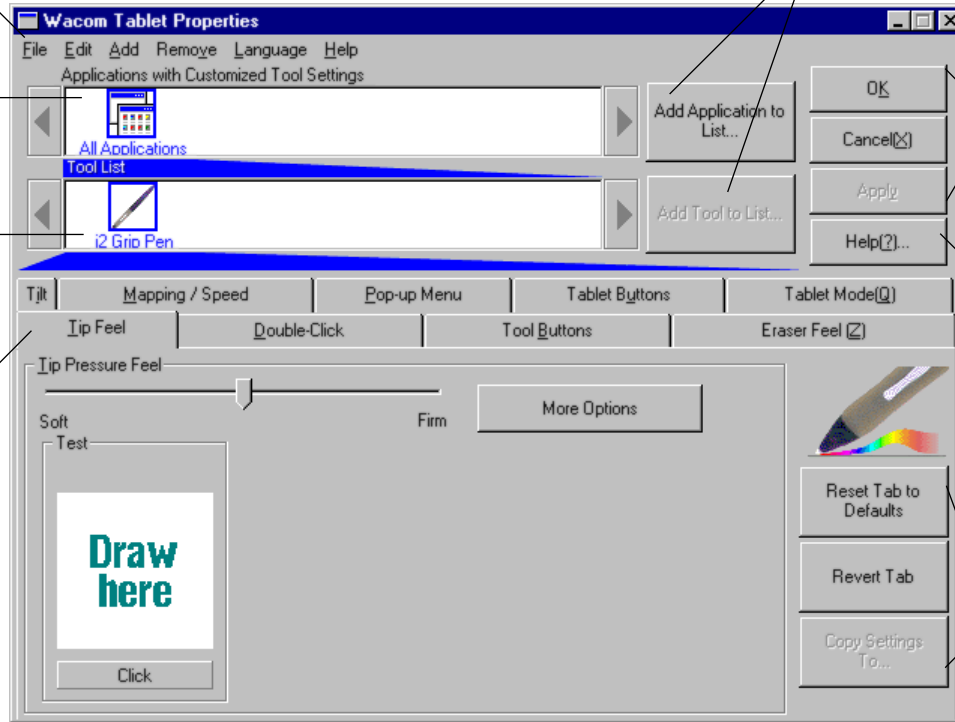
Use the Wacom control panel to customize your Intuos2 Professional Graphics Tablet.

[Pull-Down Menus](#) access many control panel features.

The [Application List](#) displays applications with customized settings.

The [Tool List](#) displays tools that are customized for the above selected application.

[Tabs](#) display settings for the selected application and selected tool.



These buttons add an application or tool to the lists at the left.

[Control Panel Buttons](#) apply to the entire control panel.

The [HELP...](#) button displays online Help. The information is the same as in the *Customizing and Advanced Features* chapters in this manual.

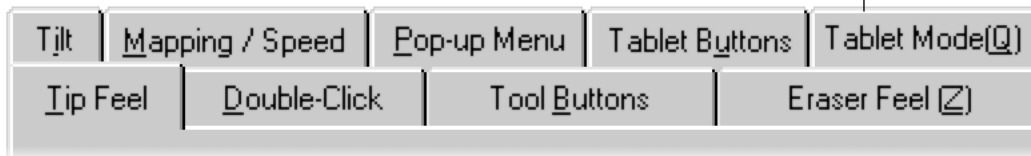
[Tab buttons](#) apply only to the selected tab.



TABS

The tabs allow you to customize your Intuos2 tablet and tools. When you open the control panel with an Intuos2 tool, the tool is automatically selected in the TOOL LIST and the appropriate tabs are displayed. If the TOOL LIST has more than one tool, you can select a different tool to customize and the appropriate tabs will display for that tool.

The TABLET MODE tab is displayed if you are working with a USB tablet.
The CONNECTION tab is displayed if you have a serial tablet.




These tabs are displayed for the Intuos2 Pen or Airbrush.

Note: The APPLICATION LIST is for advanced users; it is not necessary to select or add applications to customize your Intuos2 tool(s).



Tab buttons apply only to the selected tab:

- To set the currently open tab to its factory default values, click




Reset Tab to
Defaults

- If you have changed settings on a tab and want to return the tab to its previously saved or last applied settings (whichever is most recent using the OK or APPLY buttons), click



Revert Tab

- To copy settings from one tool or application to another, click



Copy Settings
To...

This will display the [Copy](#)

[Settings](#) dialog box.

As you explore the control panel tabs, experiment with different settings to find what works best for you. You can always click RESET TAB TO DEFAULTS to return to the factory settings. Or, click REVERT TAB to return a tab to its previously saved or last applied settings. Refer to [Customizing Your Tools](#) for detailed information on working with tabs.



[Contents](#)

[Index](#)



CUSTOMIZING

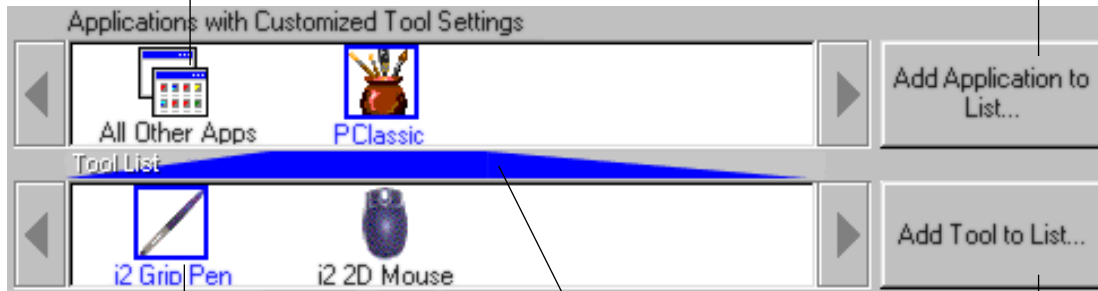
Page 49

CONTROL PANEL LISTS

Located in the upper portion of the control panel, the APPLICATION LIST and TOOL LIST allow you to create different tablet and tool settings for individual applications. For example, you might set your pen tip for a soft feel in Painter and a firm feel in all other applications.

The APPLICATION LIST displays applications that have custom tool settings associated with them.

Click to add an installed application to the APPLICATION LIST. You can customize tool settings for the selected application.



The TOOL LIST displays tools that can be customized for the application selected above.

Your current selections are highlighted. Wedges emphasize the relationship between tab settings and the selected tool and application.

Click to add an Intuos2 tool to the TOOL LIST. You can customize the tool for the above selected application.



- When you first install your Intuos2 Professional Graphics Tablet, the APPLICATION LIST displays the ALL APPLICATIONS icon. This contains tablet and tool settings for all of your applications.
- The TOOL LIST displays an icon for each Intuos2 tool that has been used on the tablet. Each Intuos2 tool that is used on the tablet will automatically appear in the TOOL LIST. However, the Wacom control panel settings must be saved before a tool is permanently added to the list. See [Adding a New Tool](#) for more information.

When you are ready to create custom settings for individual applications, see [Working with Application-Specific Settings](#).



Contents

Index



CUSTOMIZING

Page 51

CONTROL PANEL BUTTONS

The control panel buttons apply to all items in the control panel, including tab settings, items in control panel lists, and menu options.

- To close the control panel and save changes, click

OK

- To close the control panel without saving changes, click

Cancel

- To apply your changes and remain in the control panel, click
- are saved.

Apply

The changes you apply

- To display online Help for the control panel, click
- HELP pull-down menu.

Help...

Or, you can choose HELP... from the

Balloon Help, which provides quick information and useful tips, is also available for most control panel items. To access balloons, pause the screen cursor over the item for which you would like information. Help for individual dialog boxes is available by clicking on the HELP... button in the specific dialog box.



Contents

Index



CUSTOMIZING

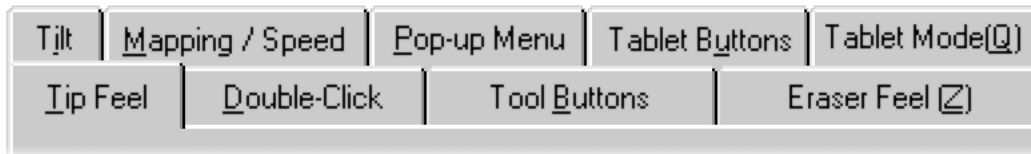
Page 52

CUSTOMIZING YOUR TOOLS

To change tool settings, open the control panel using the tool you wish to customize. The tool will automatically be selected in the TOOL LIST, and the appropriate tabs will be displayed. To customize settings for a different tool, select it from the TOOL LIST by clicking on its icon. Note that the POP-UP MENU, TABLET BUTTONS, and TABLET MODE tab settings are not tool-specific and changes apply to all tools.

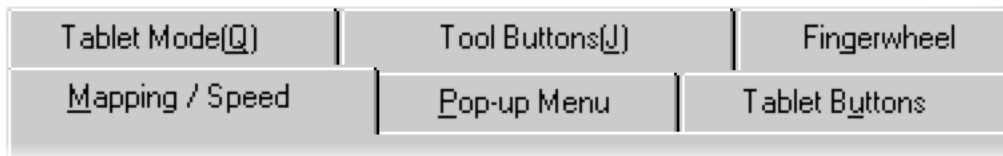
PEN AND AIRBRUSH TABS

If the selected tool is an Intuos2 Grip Pen or Airbrush, the following tabs are displayed:



2D MOUSE AND 4D MOUSE TABS

If the selected tool is a 2D Mouse or 4D Mouse, the following control panel tabs are displayed:



CUSTOMIZING PEN AND AIRBRUSH SETTINGS

Customizing your Wacom input tool is easy. First open the Wacom control panel using the tool you wish to customize. The tool will be selected in the TOOL LIST, and the appropriate tabs will be displayed. Select a tab and change settings using the available options. To customize settings for a different tool, select it from the TOOL LIST by clicking on its icon.

[ADJUSTING TIP FEEL](#)

[ADJUSTING DOUBLE-CLICK](#)

[CUSTOMIZING TOOL BUTTONS](#)

[ADJUSTING ERASER FEEL](#)

[CUSTOMIZING TILT SENSITIVITY](#)



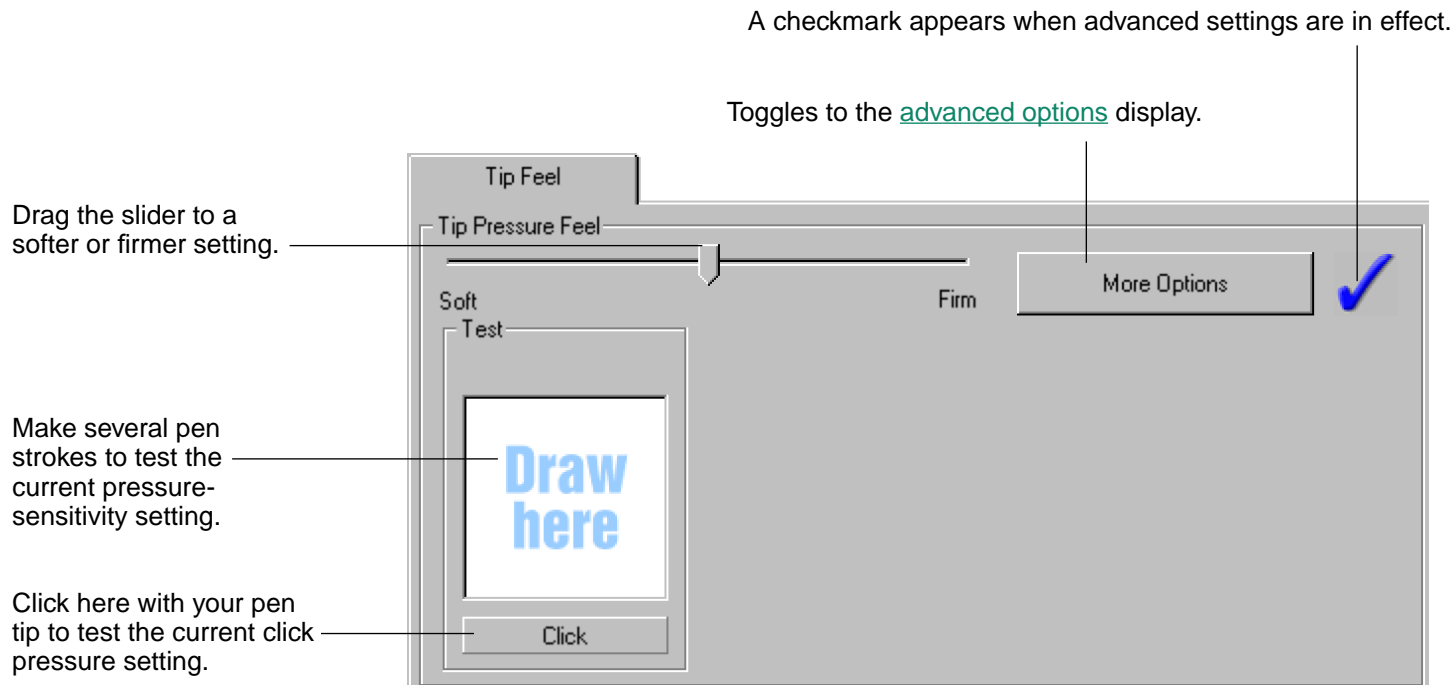
 [Contents](#)
 [Index](#)



CUSTOMIZING
Page 54

ADJUSTING TIP FEEL

To adjust the sensitivity of your Intuos2 Pen or Airbrush tip, select the TIP FEEL tab. To create broad brush strokes or to click with a light touch, use a soft tip setting. For maximum control while drawing thin lines, use a firm tip setting.



Note: For all screen shots of tabs, the [tab buttons](#) are omitted in order to save space.



ADJUSTING DOUBLE-CLICK

Double-clicking with the pen tip can be made easier by expanding the tap area that accepts a double-click (the double-click distance) and reducing the speed required to perform a double-click. This can be set in the DOUBLE-CLICK tab. Because a large double-click distance may adversely affect your brushstrokes in some drawing applications, Wacom recommends setting a small double-click distance and using the upper side switch to double-click.

Use custom double-click settings when checked.

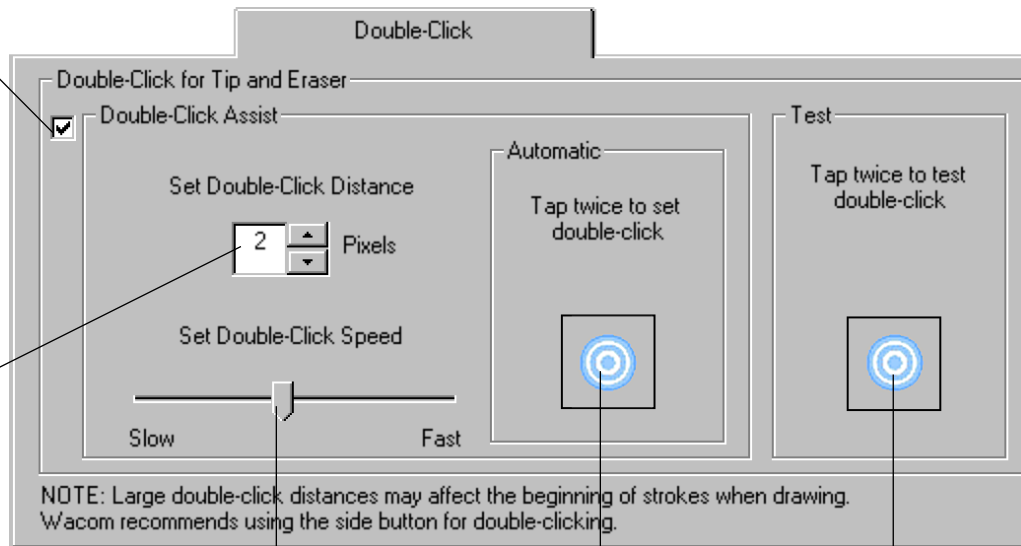
Note: DOUBLE-CLICK ASSIST can be enabled for some applications and disabled for others. See [Working with Application-Specific Settings](#) for more information.

Enter a number from 1 to 25 pixels or click the up and down arrows to increase or decrease double-click distance.

Drag the slider to change the double-click speed. A slower speed makes double-clicking easier.

Double-click on the target to test your settings before applying them.

Tap twice on this icon with your pen tip to automatically set double-click distance and speed based on the way you normally double-click.



Contents



Index

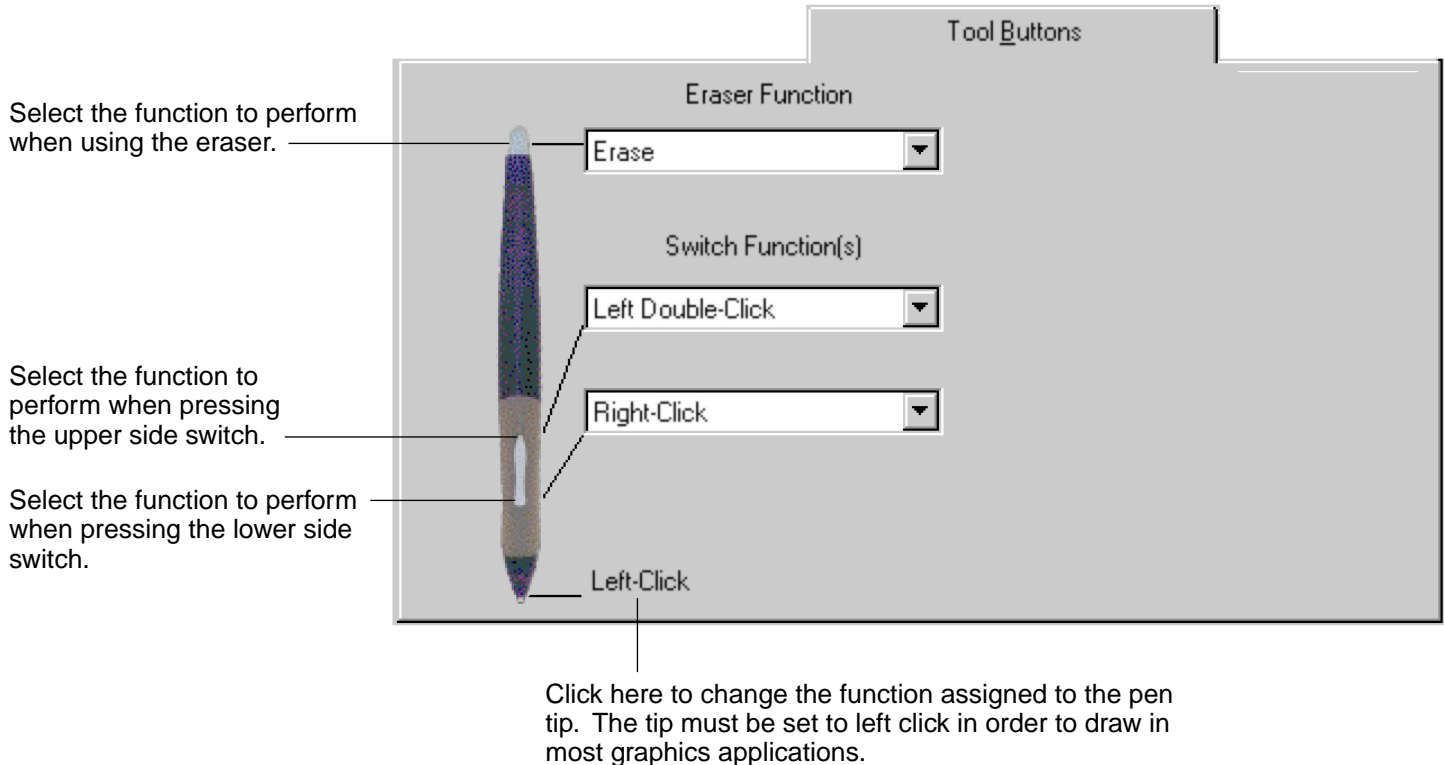


CUSTOMIZING

Page 56

CUSTOMIZING TOOL BUTTONS

Select the **TOOL BUTTONS** tab to change the functions assigned to the eraser, side switch, and tip of your Intuos2 Pen or Airbrush. If you are using an airbrush, you can also customize the [fingerwheel sensitivity](#). For each tool button, a pull-down menu enables you to choose the function that will be performed.



Contents



Index



CUSTOMIZING

Page 57

Button Functions

Each button has a pull-down menu that allows you to choose the function that will be performed when the button is pressed. The following list describes all available functions. However, some options are not available for all buttons or tools.

- **LEFT-CLICK.** Default setting for the Intuos2 Pen or Airbrush tip. This option simulates a left mouse button click. Be sure at least one button performs this function so you can always navigate and click.
- **LEFT DOUBLE-CLICK.** Default setting for the upper position of the side switch. When this option is selected, pressing the switch simulates a left mouse button double-click. For easier double-clicking, use this function instead of tapping twice with your pen or airbrush tip.
- **RIGHT-CLICK.** Default setting for the lower position of the side switch. This simulates a right mouse button click.
- **MIDDLE-CLICK.** Simulates a middle mouse button click.
- **LEFT CLICK-LOCK.** Simulates holding down the left mouse button. Press the tool button once to initiate click lock. Press the button again to release click lock. Click lock is useful for dragging objects or selecting blocks of text.



Contents



Index

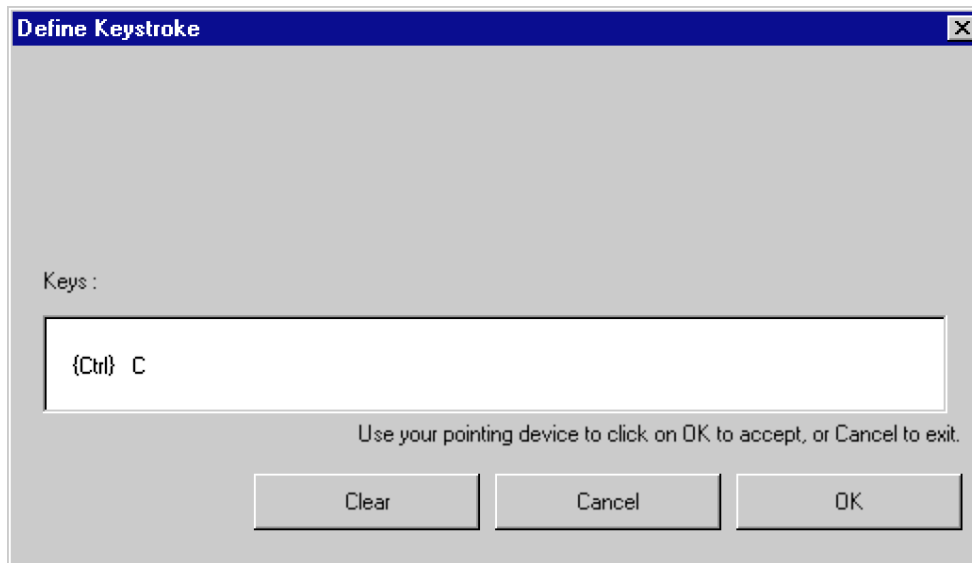


CUSTOMIZING

Page 58

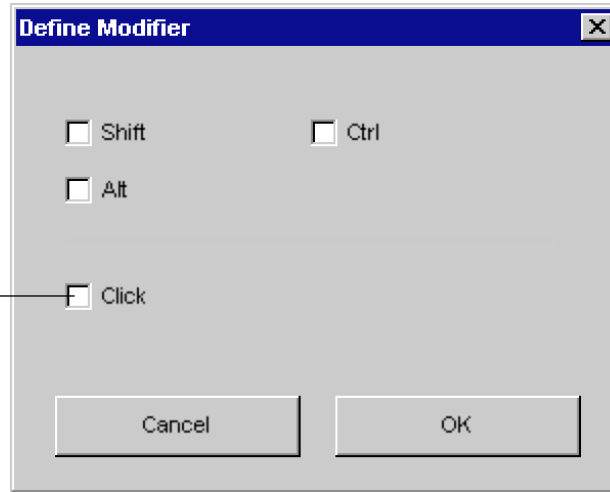
- **KEYSTROKE....** Enables you to simulate a series of keystrokes. When you select this option, the DEFINE KEYSTROKE dialog box appears. There, you can enter a keystroke or keystroke sequence to play back. Keystroke combinations can include letters, numbers, function keys (such as F3) and modifier keys (such as SHIFT, ALT, or CTRL). After defining a keystroke sequence, click OK.

Important: Because the ENTER key can be selected as a defined keystroke, it cannot be used to select OK. You must use your tool to click on the OK button.

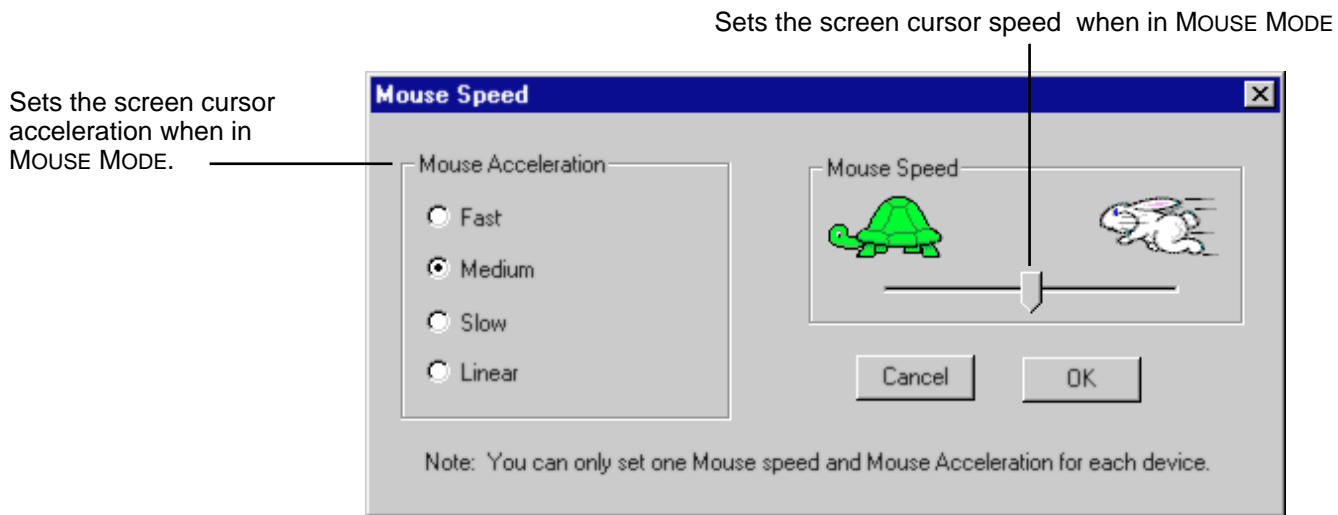


- **MODIFIER....** Enables you to simulate modifier key(s) (such as SHIFT, ALT, or CTRL). Many applications use modifier keys to constrain the size or placement of objects. If you select this option, the DEFINE MODIFIER dialog box appears. There, you select the modifier key(s) to simulate.

You can select the CLICK box plus one or more modifier key options to define the function you want your tool button to simulate.



- **PRESSURE HOLD.** Sets a button so that, when pressed, the pressure is locked at the current pressure level until the button is released. For example, you can paint with pressure-sensitivity until you reach the brush size that you like. You can then press the button and continue painting with the same size brush until the button is released.
- **MODE TOGGLE....** Toggles between [Pen Mode](#) and [Mouse Mode](#). When first setting a tool button to MODE TOGGLE..., the MOUSE SPEED dialog box is displayed where you can adjust the mouse acceleration and speed.



Note: Mouse speed settings can be accessed from a number of different locations within the control panel. However, for each input tool and application that you are customizing, only one MOUSE SPEED and ACCELERATION setting can be made.



- **POP-UP MENU.** Displays a Pop-up Menu on your screen. See [Customizing the Pop-up Menu](#) for more information.
- **ERASE.** Default setting for the eraser. Refer to [Erasing](#) for information on using the eraser.
- **IGNORED.** (Intuos2 Pens and Airbrush only.) Disables the button function.
- **APPLICATION DEFINED.** (2D Mouse, 4D Mouse, or Lens Cursor only.) Only the button number is reported to your application. Use this setting when using applications that have built-in support for tool buttons. For example, CAD programs that support tablets can assign their own functions to a button.



Contents

Index

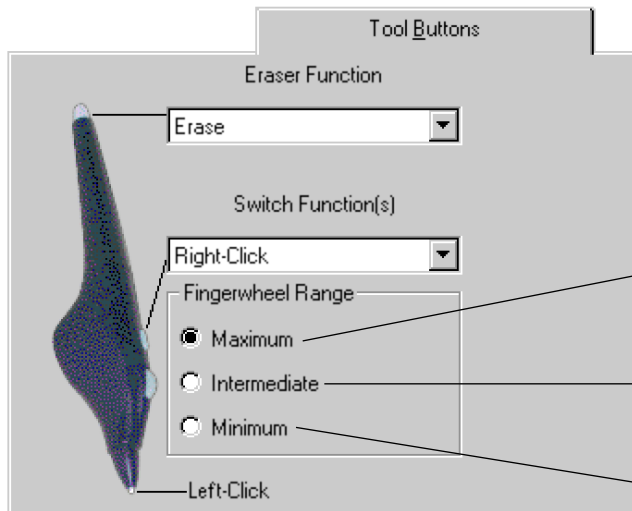


CUSTOMIZING

Page 62

Airbrush Settings

The Intuos2 Airbrush is equipped with a drawing tip, a fingerwheel, a single side switch, and an eraser. Button functions are set in the same manner as with the Intuos2 Pen. Additionally, the fingerwheel sensitivity range can be customized to suit your preference.



MAXIMUM is the default setting, and requires you to move the wheel over its full range to achieve maximum effect.

INTERMEDIATE requires a medium amount of wheel movement to achieve maximum effect.

MINIMUM requires the least amount of wheel movement to achieve maximum effect.

In supporting applications, the fingerwheel can be used to control ink flow, brush size, opacity, or other variables. Reducing the fingerwheel range allows you to achieve the same effect with less finger movement. Move the wheel forward for less effect and move it back for more effect.

Visit Wacom's web site for a list of applications that currently support airbrush features. See [Product Information](#).



ADJUSTING ERASER FEEL

To adjust the sensitivity of your Intuos2 Pen or Airbrush eraser, select the ERASER FEEL tab. To erase with a broad stroke or to click with a light touch, use a soft eraser setting. For maximum control while erasing, use a firm eraser setting.

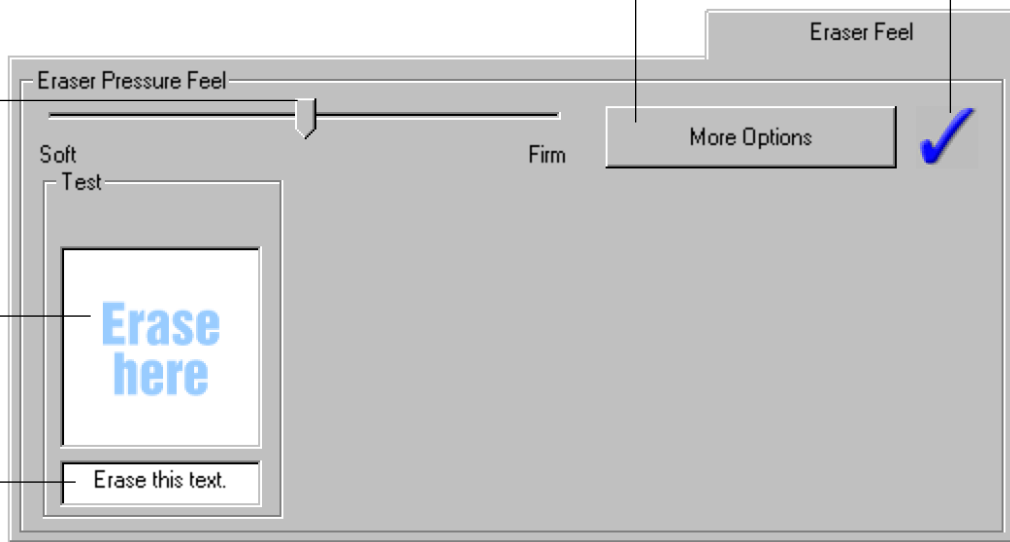
A checkmark appears when advanced settings are in effect.

Toggles to the [advanced options](#) display.

Drag the slider to a softer or firmer setting.

Using your eraser, test the current eraser pressure-sensitivity setting by erasing here.

Check the eraser click pressure setting by using the eraser to select and delete this text.



Contents



Index



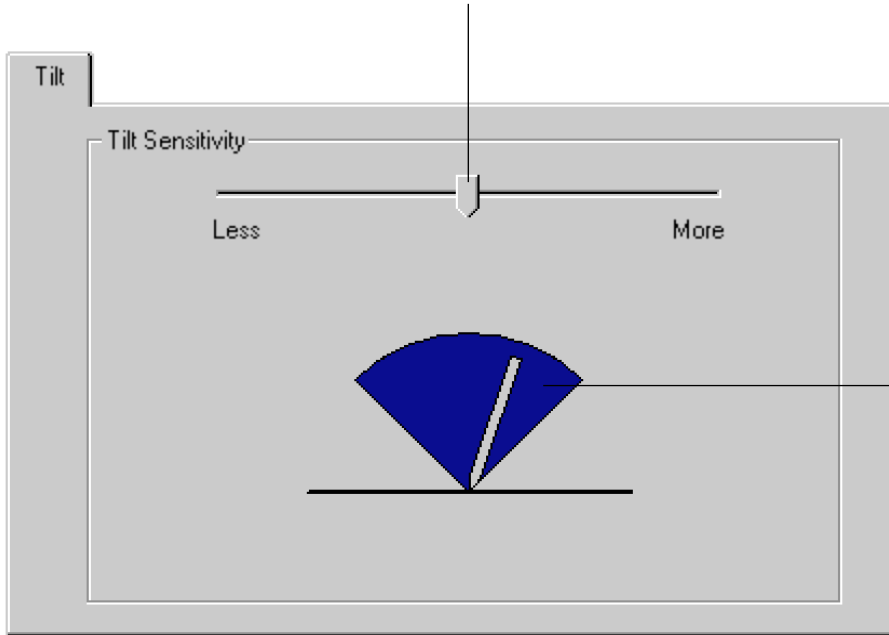
CUSTOMIZING

Page 64

CUSTOMIZING TILT SENSITIVITY

To adjust the tilt sensitivity of your Intuos2 Pen or Airbrush, select the TILT tab. Tilt sensitivity controls how far you have to tilt the tool to produce the maximum tilt effect in your application. You need to tilt the pen less at high sensitivity than at low sensitivity to get the full tilt value reported to your application. Like pressure-sensitivity, tilt can be assigned to control brush characteristics. Your tilt setting applies to both the tip and eraser of your pen or airbrush.

Drag the slider to increase or decrease pen tilt sensitivity. The default setting is LESS.



The tilt display graphically shows the reported tilt angle of your pen or airbrush.

Place your pen or airbrush vertically on the tablet, and tilt it from side to side and forward and backward. The graphic lever moves to indicate the amount and direction of tilt reported to the application.

Note: Tilt is direction-sensitive and can be used in some applications to control brush orientation.

Visit Wacom's web site for a list of applications that currently support tilt. See [Product Information](#).



CUSTOMIZING MOUSE TOOL SETTINGS

Customizing your Wacom input tool is easy. First open the Wacom control panel using the tool you wish to customize. The tool will be selected in the TOOL LIST, and the appropriate tabs will be displayed. Select a tab and change settings using the available options. To customize settings for a different tool, select it from the TOOL LIST by clicking on its icon.

[CUSTOMIZING THE 2D MOUSE](#)

[CUSTOMIZING THE 2D MOUSE FINGERWHEEL](#)

[CUSTOMIZING THE 4D MOUSE AND LENS CURSOR](#)

[CUSTOMIZING THE 4D MOUSE FINGERWHEEL](#)



Contents

Index



CUSTOMIZING

Page 66

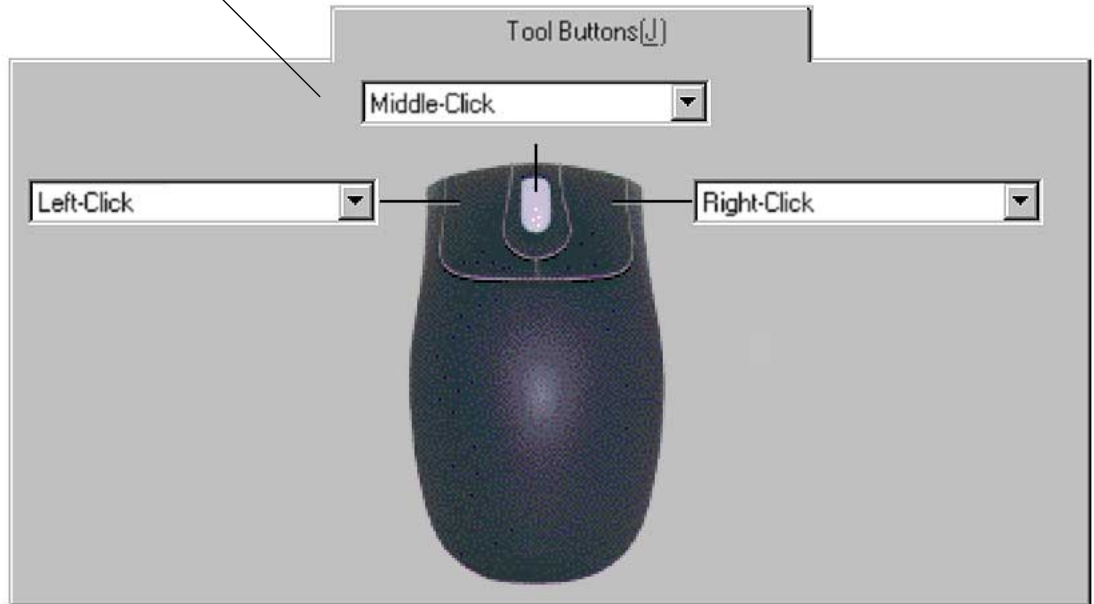
CUSTOMIZING THE 2D MOUSE

To modify your 2D Mouse button settings, select the TOOL BUTTONS tab.

Select the function to perform when pressing a button.

You can select a function to perform for each button from the button pull-down menus. Refer to [Button Functions](#) for a description of the available options.

The 2D Mouse buttons are chordable; you can press two or more buttons simultaneously. For example, if you program one button to simulate the CTRL key and another to simulate a Z keystroke, when you press both buttons a CTRL+Z is simulated.



Contents



Index



CUSTOMIZING

Page 67

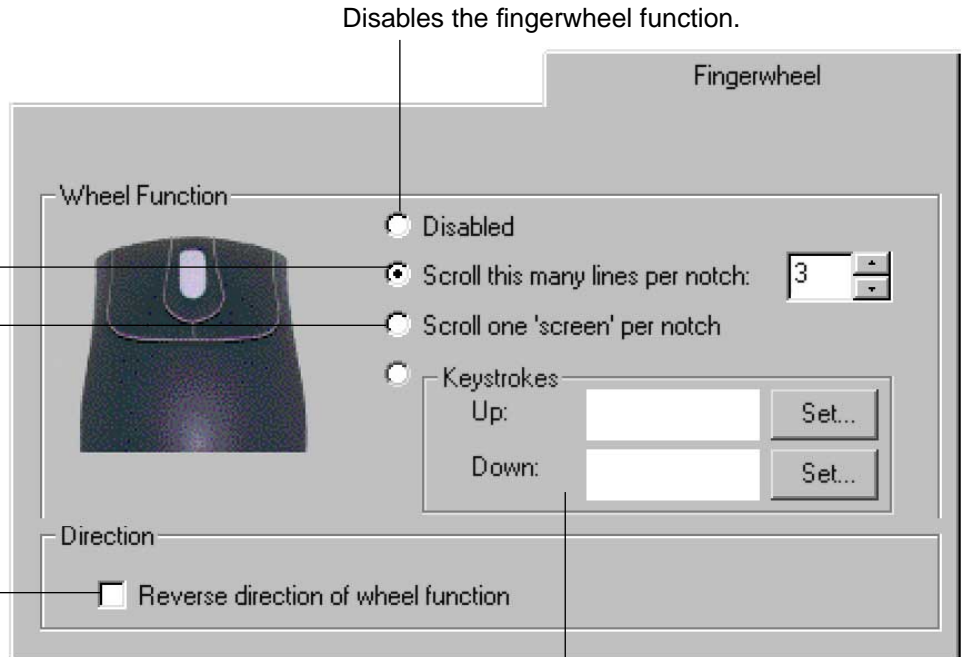
CUSTOMIZING THE 2D MOUSE FINGERWHEEL

The 2D Mouse fingerwheel emulates the Microsoft IntelliMouse wheel and controls scrolling in most active windows and in applications that support the IntelliMouse. To customize your 2D Mouse fingerwheel, choose the FINGERWHEEL tab.

Sets the fingerwheel to scroll the selected number of lines for each notch of fingerwheel movement. Enter a value (1 to 15) to set the amount of movement. Roll the fingerwheel forward to scroll up, and back to scroll down.

Sets the fingerwheel to scroll one screen for each notch of fingerwheel movement.

When checked, the functions assigned for the forward and backward direction of the fingerwheel are exchanged.



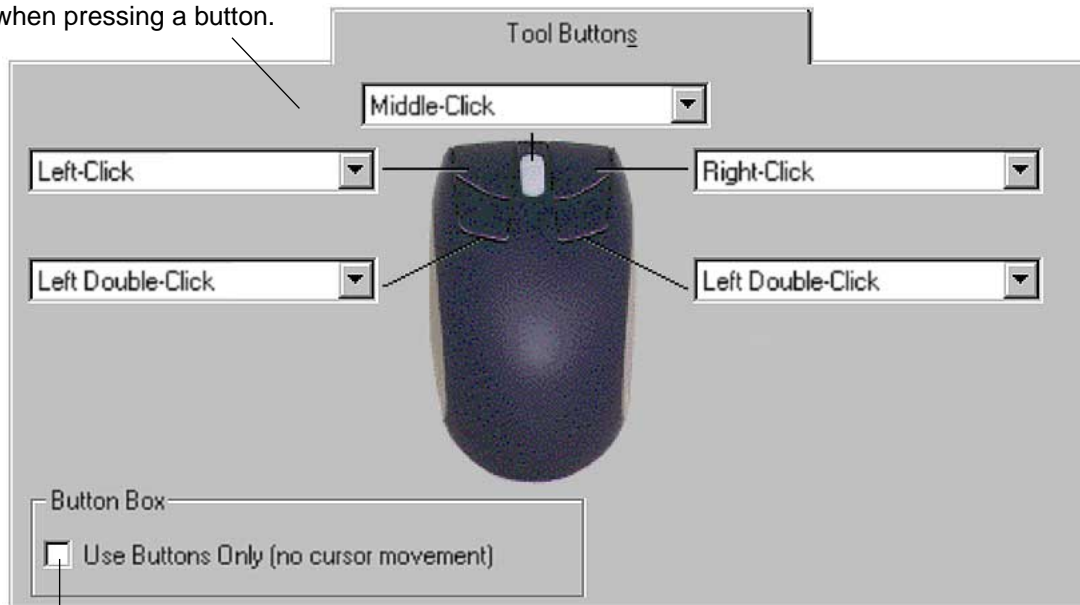
The KEYSTROKES radio button sets the fingerwheel to issue a keystroke for each notch of wheel movement. This is useful when working with repetitive functions (such as zooming in Photoshop, or moving forward and backward within your internet browser). Click the appropriate SET... button to enter a keystroke function. The keystroke setting will be displayed in the UP or DOWN box.



CUSTOMIZING THE 4D MOUSE AND LENS CURSOR

To modify your 4D Mouse and Lens Cursor button settings, select the TOOL BUTTONS tab. As with the Intuos2 Pen and Airbrush, you can select a function to perform for each button from the button pull-down menus. Refer to [Button Functions](#) for a description of the available options.

Select the function to perform when pressing a button.



When checked, the 4D Mouse or Lens Cursor functions as a Button Box. See [Creating a Button Box](#).

Note: To configure the Lens Cursor or Mouse for left handed use when digitizing in AutoCAD or in other programs that look at button numbers instead of the assigned button functions, select the LEFT HANDED option in the PREFERENCES dialog box (accessed from the EDIT pull-down menu).



Programming the 4D Mouse and Lens Cursor

The 4D Mouse and Lens Cursor buttons are chordable; you can press two or more buttons simultaneously and the functions will occur. For example, if you program one button to simulate the CTRL key and another to simulate a Z keystroke, when you press both buttons a CTRL+Z is simulated.

Creating a Button Box

You can check the BUTTON BOX option to disable cursor tracking when using the 4D Mouse or Lens Cursor. This gives you the freedom to draw with the pen without having to reach for the keyboard to enter a keystroke. Instead, you might press the 4D Mouse or Lens Cursor buttons to perform defined keystroke functions. Note that if you use your 4D Mouse or Lens Cursor as a Button Box, it must remain on the tablet's active area to function.



Contents

Index



CUSTOMIZING

Page 70

CUSTOMIZING THE 4D MOUSE FINGERWHEEL

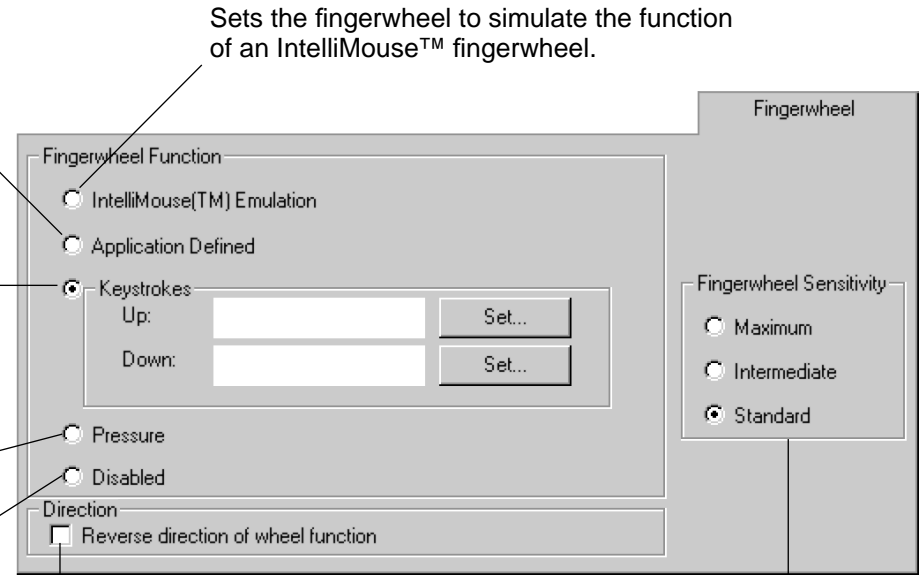
To customize your 4D Mouse fingerwheel, choose the FINGERWHEEL tab.

Provides fingerwheel information to a supporting application. Some applications may use the fingerwheel for 3D navigation, zooming, audio or video jogging, etc.

The KEYSTROKES radio button sets the fingerwheel to issue repeated keystroke events to the application. You can adjust the rate of repetition by how far you move the fingerwheel forward or backward. This is useful when working with repetitive functions (such as zooming in Photoshop or moving forward and backward within your internet browser). Click the appropriate SET... button to enter a keystroke function. The keystroke setting will be displayed in the UP or DOWN box.

Simulates pressure. Move the fingerwheel forward or backwards to increase pressure.

Disables the fingerwheel.



Sets the fingerwheel to simulate the function of an IntelliMouse™ fingerwheel.

When checked, the functions assigned for the forward and backward direction of the fingerwheel are exchanged.

Sets the fingerwheel sensitivity. With MAXIMUM selected, a small movement of the fingerwheel will create a large effect. With STANDARD selected, a small movement of the fingerwheel will create a small effect.



TABLET TO SCREEN MAPPING

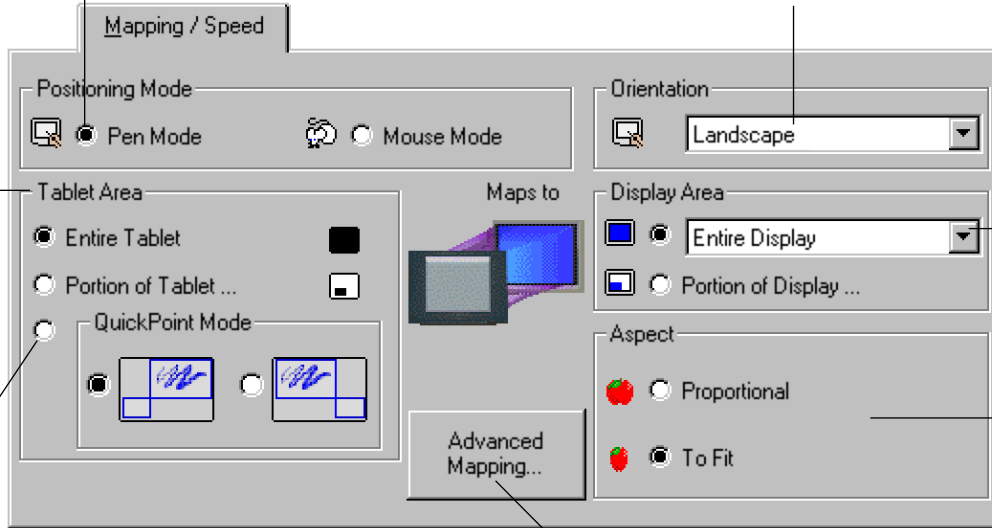
To change the relationship between tool movement on your tablet and cursor movement on the screen, select the MAPPING/SPEED tab. The default POSITIONING MODE for Intuos2 Pens and the Airbrush is PEN MODE, which means that each point on the tablet maps to a corresponding point on the screen. In PEN MODE, the MAPPING/SPEED tab looks like this:

Positioning Mode. In **Pen Mode**, the screen cursor moves with absolute positioning.

Select the **Orientation** of your tablet.

Note: Except for tablet orientation, all mapping settings apply to a specific Intuos2 tool.

Select the **Tablet Area** for drawing.



Display Area. Select a monitor area for tablet to screen mapping.

Aspect. Select a tablet to screen mapping relationship.

QuickPoint Mode. “Splits” tablet into two independent areas: a large area for drawing and a small area for quick navigation. Both areas are mapped to the display area.

Click here to display **Advanced Mapping** options.



Contents
Index



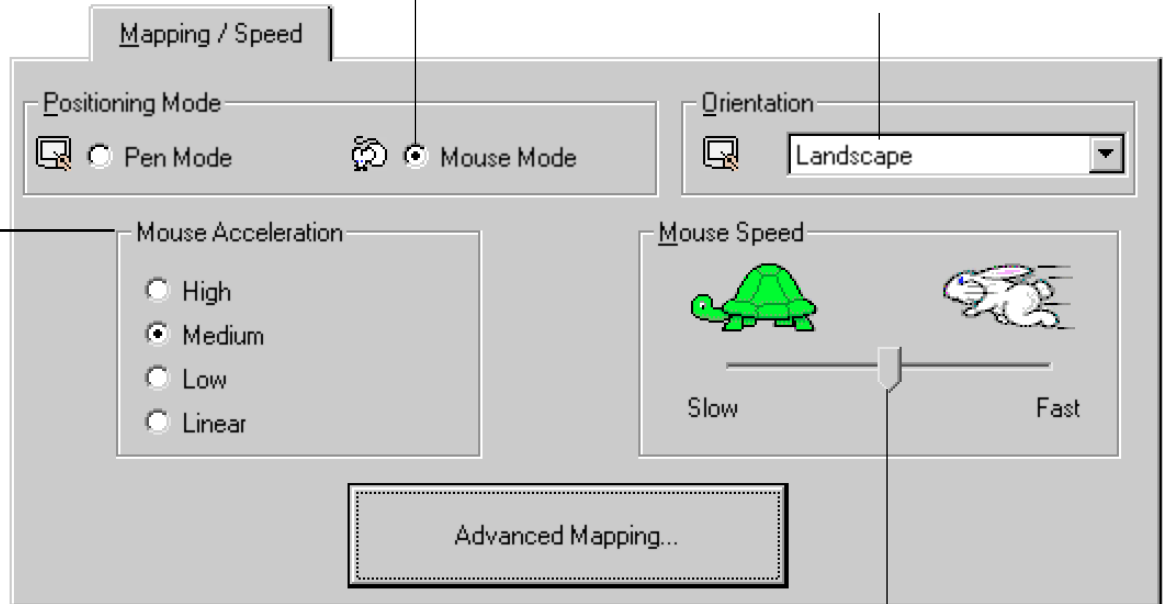
CUSTOMIZING
Page 72

The default POSITIONING MODE for the 2D Mouse, 4D Mouse, and Lens Cursor is MOUSE MODE. With MOUSE MODE selected, the MAPPING/SPEED tab looks like this:

Positioning Mode. In Mouse Mode, the screen cursor moves with relative positioning.

Select the Orientation of your tablet.

Sets the screen cursor acceleration when in MOUSE MODE.



Select a slower or faster screen cursor speed when in Mouse Mode.



POSITIONING MODE

The POSITIONING MODE controls how the screen cursor moves.

- In PEN MODE, wherever you place an Intuos2 tool on the tablet, the cursor jumps to the corresponding point on the screen. This is the default setting for Intuos2 Pens and the Airbrush, and is required for tracing.
- In MOUSE MODE, the screen cursor is positioned like a mouse, requiring a “pick up and slide” motion to move the cursor on the screen. This is the default setting for the 2D Mouse, 4D Mouse, and Lens Cursor.

By default the pen and airbrush are set to PEN MODE for drawing, and the 2D Mouse and 4D Mouse are set to MOUSE MODE for navigation.

Note: You can also switch between PEN MODE and MOUSE MODE by clicking on the appropriate tablet button, or by using the screen Pop-up Menu. See [Customizing Tablet Buttons](#) and [Customizing the Pop-up Menu](#) for more information.



Contents

Index



CUSTOMIZING

Page 74

ORIENTATION

If you want the tablet menu buttons on the side or the bottom of your tablet, or if you are working with a tall monitor, you can rotate the tablet to one of the following orientations:

- **LANDSCAPE.** Tablet orientation is horizontal, with tablet buttons at the top. This is the default setting.
- **PORTRAIT.** Rotate the tablet 90 degrees clockwise from landscape orientation. The tablet orientation will be vertical, with the tablet buttons on the right side.
- **LANDSCAPE FLIPPED.** Rotate the tablet 180 degrees from landscape orientation. The tablet will be upside down, with the tablet buttons near the bottom.
- **PORTRAIT FLIPPED.** Rotate the tablet 90 degrees counter-clockwise from landscape orientation. The tablet orientation will be vertical with the tablet buttons on the left side.

After making changes, verify you have the correct setting for your tablet orientation. Do this by moving your tool “up” on the tablet—the cursor should move up as well.

Note: The orientation you select applies to all tools and applications.



Contents

Index



CUSTOMIZING

Page 75

ASPECT

Aspect defines the constraints of the tablet to screen relationship. ASPECT options include:



- **PROPORTIONAL.** Maintains correct vertical and horizontal proportions between the tablet and display. A traced image appears proportionally correct on your display, but may be smaller or larger than the original image.



- **To Fit.** Correct scale or proportions are not maintained. The selected tablet area is mapped to the selected display area. A traced image may appear stretched, and may be smaller or larger than the original image. This is the default setting for all tools.



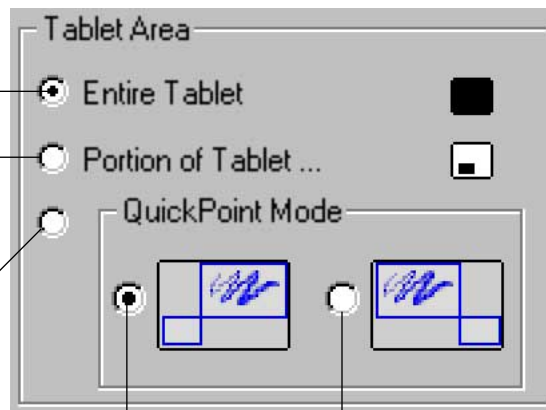
TABLET AREA

These settings allow you to define the tablet area that will be mapped to the display area.

Uses the entire active area of the tablet for tablet to display mapping. This is the default setting.

Displays the PORTION OF TABLET dialog box where you can select a portion of the tablet's active area for tablet to display mapping.

Divides the tablet into a drawing area and a QuickPoint area for quick navigation. (For Intuos2 9x12/A4-regular and larger tablets.)



Sets the QuickPoint area to the lower right corner of the tablet.

Sets the QuickPoint area to the lower left corner of the tablet.



- **PORTION OF TABLET.**

Enter coordinates to select the tablet area.

- Select UNITS of measure for the displayed values. A count equals one line of tablet resolution.
- Enter values for the TOP, LEFT, BOTTOM, and RIGHT boundary of the tablet area. Values are measured from the top left corner of the tablet's active area.

Drag corners of the foreground graphic to select the tablet area. The background graphic represents the entire active tablet area. Values in the ENTER COORDINATES text boxes change accordingly.

Use your tool on the tablet to select the tablet area.

- Select the CLICK TO DEFINE TABLET AREA button.
- Follow the MESSAGE prompts to set the portion of your tablet that will be used for mapping.

Portion of Tablet

Choose one of the following three ways to define Portion of Tablet:

1. Enter Coordinates:

Top Units

Left Bottom

Right

2. Drag Handles:

Position Rectangle for Tablet

3. Select Area with Tool:

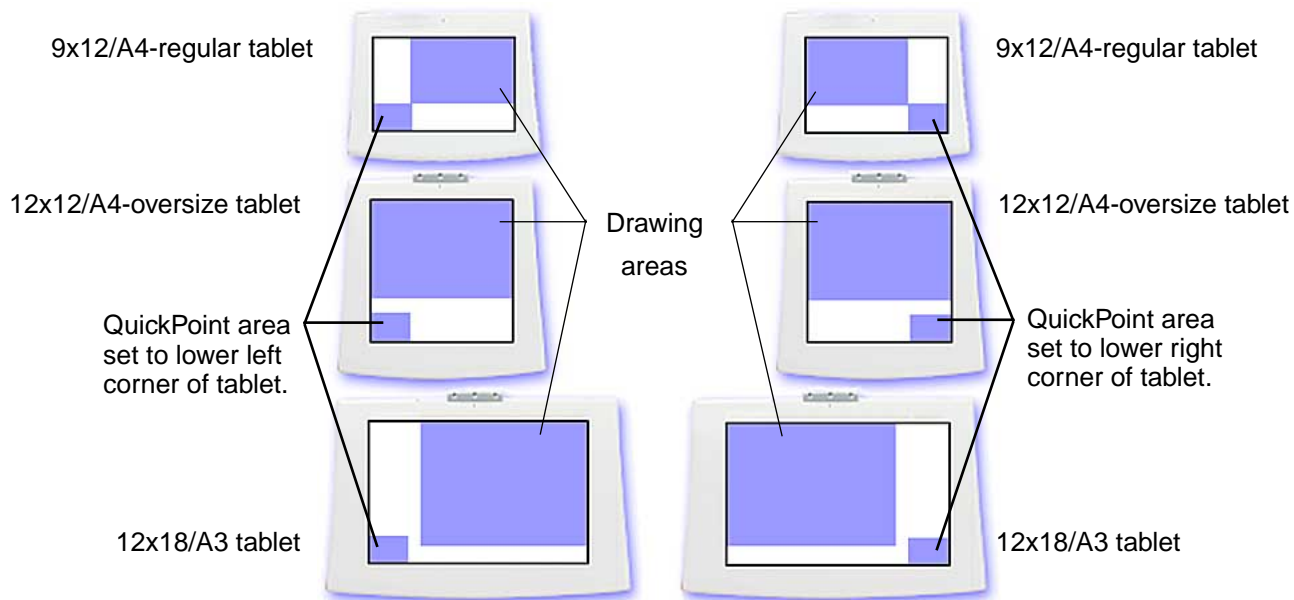
Message:

Note: As you define PORTION OF TABLET, be sure to review the MESSAGE prompts that may appear.



- QUICKPOINT MODE.** This option (available for Intuos2 9x12/A4-regular and larger tablets) divides the tablet into two independent areas: a large area for drawing, and a small area for quick navigation. QuickPoint Mode can also be selected and deselected using the tablet buttons or screen Pop-up Menu. See [Customizing Tablet Buttons](#) and [Customizing the Pop-up Menu](#) for more information.

The QuickPoint area is always mapped to the entire display area (to all monitors on multiple monitor systems). The drawing area is set to Pen Mode and mapped according to the DISPLAY AREA and ASPECT settings.



Note: The QuickPoint area and drawing area are indicated by crop marks on the tablet overlay. All QuickPoint and drawing areas have the same [aspect](#) as a standard monitor (aspect ratio of 3:4).



DISPLAY AREA

The DISPLAY AREA options allow you to define which portion of the display screen your tablet will map to.

- **ENTIRE DISPLAY.** Select this option to access the entire display. This is the default setting. If more than one monitor is in use, a pull-down menu is displayed with options for selecting ALL MONITORS or individual monitors.
- **PORCION OF DISPLAY....** This option allows you to select a portion of the display for tablet to screen mapping. Selecting PORTION OF DISPLAY... brings up the PORTION OF DISPLAY dialog box.

Enter coordinates to select the screen area.

- Select UNITS of measure for the displayed values.
- Enter values for the TOP, LEFT, BOTTOM, and RIGHT boundary of the display screen area. Values are measured from the top left corner of the display.

Drag corners of the foreground graphic to select the screen area. The background graphic represents the entire screen area. Values in the ENTER COORDINATES text boxes will change accordingly.

Move the screen cursor to select the screen area.

- Select the CLICK TO DEFINE SCREEN AREA button.
- Follow the MESSAGE prompts to set the portion of your display screen that will be used for mapping.

Portion of Display

Choose one of the following three ways to define Portion of Screen:

1. Enter Coordinates

Top 0 Units Pixel

Left 0 Bottom 768

Right 1024

2. Drag Handles

Position Rectangle For Screen

3. Select Area with Screen Cursor

Click to define screen area

Message:

Help... Cancel OK

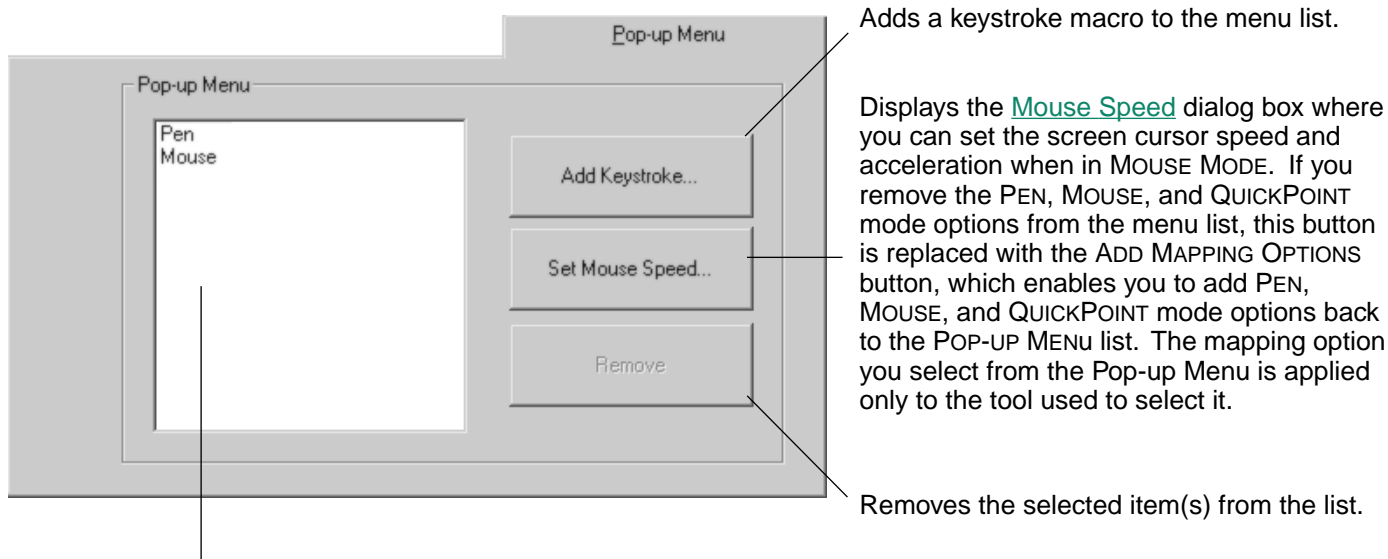
Note: As you define PORTION OF DISPLAY, be sure to review the MESSAGE prompts that may appear.



CUSTOMIZING THE POP-UP MENU

Select the POP-UP MENU tab to customize the available functions on the Pop-up Menu list. The Pop-up Menu list may include keystroke functions and mapping options.

To display the Pop-up Menu, set one of your tool buttons to the POP-UP MENU function. Whenever you push that button, the Pop-up Menu is displayed. Select items in the Pop-up Menu by clicking on them. To close the Pop-up Menu without making a selection, just click outside the Pop-up Menu.



Displays a list of functions that will appear in the Pop-up Menu. To change the order of an item, drag it to a new location (mapping options are moved as a group).

Note: Pop-up Menu settings apply to all tools.

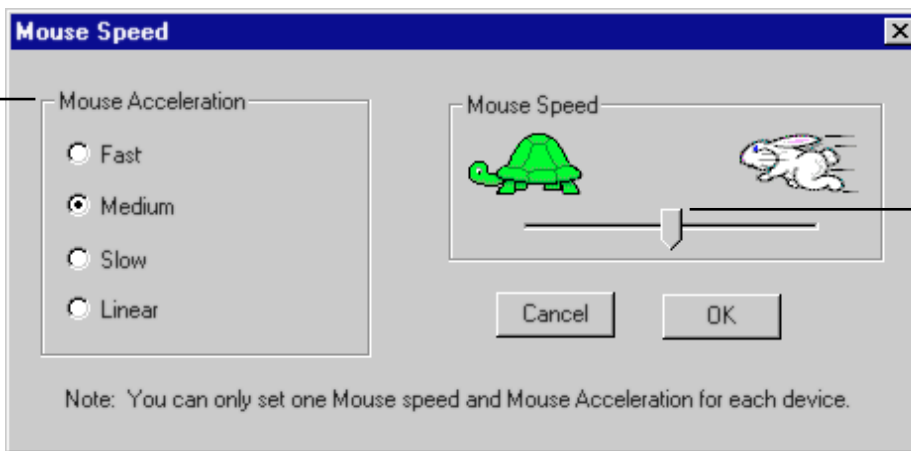


ADD KEYSTROKES

To add a keystroke definition to the Pop-up Menu, click on the ADD KEYSTROKE... button. A dialog box will appear where you can specify and name the keystroke function. You can also create different keystroke functions for different applications. See [Working with Application-Specific Settings](#) for more information.

SETTING MOUSE SPEED

To change the screen cursor acceleration and speed when in MOUSE MODE, click on the SET MOUSE SPEED... button (located on the POP-UP MENU tab) to display a dialog box where you can make your adjustments. If you removed the PEN, MOUSE, and QUICKPOINT mode options from the menu list, this button is replaced with the ADD MAPPING OPTIONS button, which enables you to add PEN, MOUSE, and QUICKPOINT mode options back to the Pop-up Menu list.



Sets the screen cursor acceleration when in MOUSE MODE.

Sets the screen cursor speed when in MOUSE MODE

Note: The MOUSE SPEED dialog box will also appear when you first set a tool button to MODE TOGGLE... from the TOOL BUTTONS tab. For each input tool and application that you are customizing, only one MOUSE SPEED and ACCELERATION setting can be made.



ADD MAPPING OPTIONS

Click on the ADD MAPPING OPTIONS button (when visible) to add the following mapping options to the Pop-up Menu list: [Pen mode](#), [Mouse mode](#), and (if you are working with a Intuos2 9x12/A4-regular or larger tablet) [QuickPoint mode](#).

REMOVING POP-UP MENU OPTIONS

To remove mapping option(s) or keystroke function(s) from the Pop-up Menu list, select the function(s) you wish to remove and click the REMOVE button. Mapping options must be added or removed as a single item.



Contents

Index

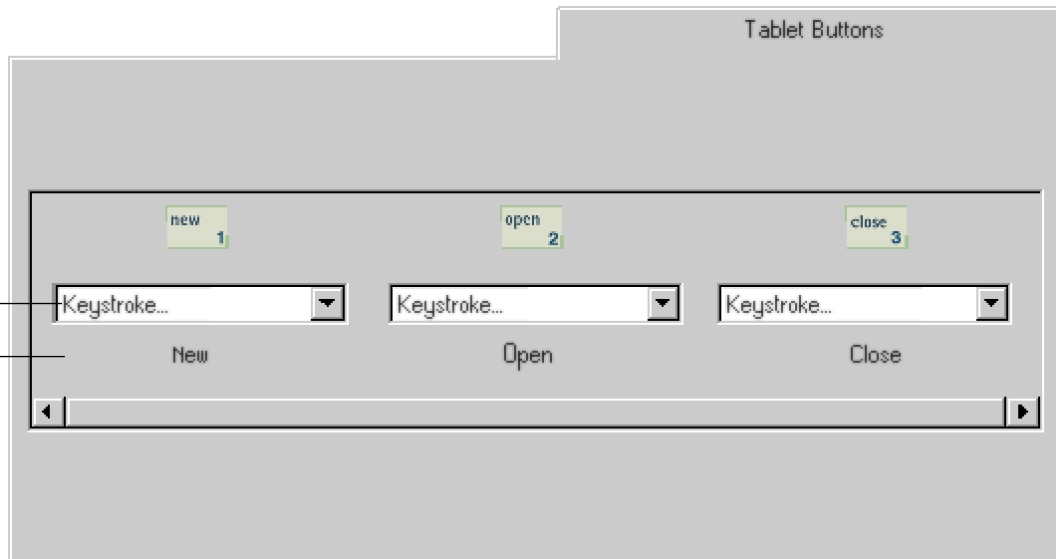


CUSTOMIZING

Page 83

CUSTOMIZING TABLET BUTTONS

To customize the tablet menu strip buttons, select the **TABLET BUTTONS** tab. By default, tablet buttons with predefined functions have that function selected in their pull-down menu. The settings of other tablet buttons are set to **IGNORED**. See [Using The Tablet Menu Strip](#) for the default tablet button settings.



Choose the function to perform when the tablet button is selected.

Displays the predefined function or keystroke sequence. Otherwise, this is left blank.

You can define different tablet button functions for each application, but not for the different Intuos2 tools. To customize tablet button functions:

1. Select the button you wish to customize from the scrolling list.



2. Select an item from the tablet button's pull-down menu.
 - **KEYSTROKE.** Simulates a keystroke or keystroke combination.
 - **PRESSURE SOFT.** Sets the pressure feel of the pen, airbrush, or eraser to a soft setting.
 - **PRESSURE FIRM.** Sets the pressure feel of the pen, airbrush, or eraser to a firm setting.
 - **PRESSURE NORMAL.** Returns the pressure feel of your tool to the factory default.
 - **PEN MODE.** Places your tool in Pen Mode.
 - **MOUSE MODE....** Places your tool in MOUSE MODE. When first setting a tablet button to MOUSE MODE..., the MOUSE SPEED dialog box is displayed where you can adjust the mouse acceleration and speed.
 - **QUICKPOINT MODE.** Divides the tablet into a QuickPoint area and a drawing area. This option is only available for Intuos2 9x12/A4-regular or larger tablets.
 - **IGNORED.** Leaves the tablet button undefined. When a tablet button is set to IGNORED, the button number does not appear on the display screen when an Intuos2 tool is moved over the button.
 - **DEFAULT.** Returns a button to its default settings. These settings match the predefined menu strip functions.
 - **Back.** Sets the button to emulate the back function within your internet browser.
 - **Forward.** Sets the button to emulate the forward function with your internet browser.
 - **Stop.** Sets the button to emulate the stop function within your internet browser.
 - **Refresh.** Sets the button to emulate the refresh function within your internet browser.

After defining a new tablet button function, you may want to label the appropriate menu strip button (with 6x8/A5 and larger tablets only). Lift the left edge of the tablet overlay and [remove](#) the menu strip. Write the function name on the button with a pencil, and then replace the menu strip. Take care not to damage the overlay or lose the menu strip.

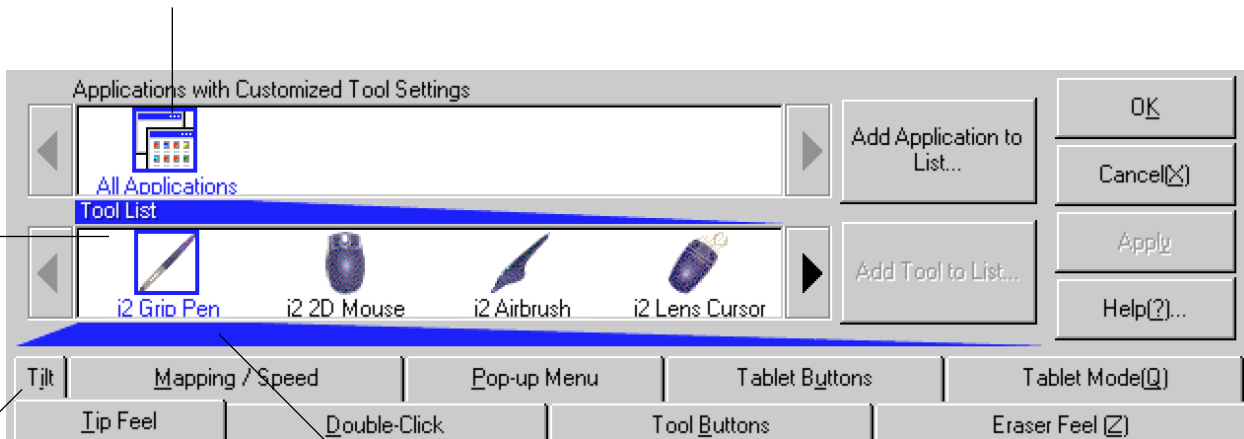


WORKING WITH MULTIPLE TOOLS

The Wacom control panel is designed to help you customize and keep track of your Intuos2 tool settings. The tool you use to open the control panel is automatically selected, and the appropriate tabs for that tool are displayed.

If application-specific settings have not been added, the ALL APPLICATIONS icon is displayed and the tool settings apply for all applications.

The TOOL LIST displays icons for tools that are customized for the above selected application.



Tab settings apply only to the selected tool and application.

Your current selections are highlighted. Wedges emphasize the relationship between tab settings and the selected tool and application.



ADDING A NEW TOOL

When a new Intuos2 tool is placed on the tablet, it automatically appears in the TOOL LIST. However, the Wacom control panel settings must be saved before the tool is permanently added to the list. Whenever a new Intuos2 tool is added it always uses the default settings for that tool, and not the custom settings of other tools, even if they are identical devices.

There are several ways to add Intuos2 tools to the TOOL LIST:

- When you use an Intuos2 tool on the tablet for the first time, it will automatically function with the appropriate default settings. You can customize the tool by opening the Wacom control panel, changing tab settings, and then clicking OK to save your changes and permanently add the tool to the TOOL LIST. When you place a second Intuos2 tool on the tablet, a new tool discovered message box appears. This reminds you to open the Wacom control panel and click OK to permanently add the new tool to the TOOL LIST. (This message only appears if the Wacom control panel is not open. If the control panel is open, the tool is automatically added to the list when you click OK.)
- To manually add a new tool, select TOOL TO CUSTOMIZE... from the ADD pull-down menu. In the ADD TOOL TO CUSTOMIZE dialog box, select ADD NEW TOOL... and follow the prompts. Remember to click OK or APPLY in the main control panel window to save your changes.

When you select a new tool that you have added to the TOOL LIST, the appropriate tab settings for that tool are displayed. Any changes you make to the tab settings will then apply to that tool.

To remove a tool from the TOOL LIST, select CUSTOMIZED TOOL... from the REMOVE menu. In the dialog box that appears, select the tool to remove. Then select REMOVE TOOL COMPLETELY and click OK.



USING MORE THAN ONE TOOL

Each Intuos2 tool features Tool ID, which makes each device unique. Any settings you customize in the Wacom control panel apply only to the specific tool for which they were made.

If you have two identical Intuos2 tools, they will appear as numbered devices in the TOOL LIST. You can give each tool a different name. For example, you might name one “Drawing Pen” and the other “Paint Brush”. To change the tool names, select RENAME TOOL... from the EDIT pull-down menu.

To use the same custom settings with two tools, click the [Copy Settings To...](#) button and choose the settings you want to copy. For dissimilar tools (such as a pen and a 4D Mouse), only those settings common to both tools (such as mapping settings) can be copied.



Contents

Index



CUSTOMIZING

Page 88

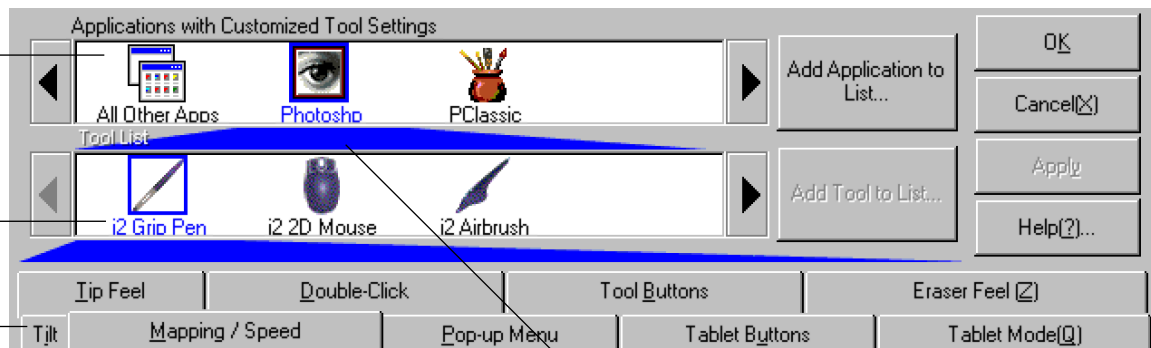
WORKING WITH APPLICATION-SPECIFIC SETTINGS

You may wish to have different tool settings for a particular application. The APPLICATION LIST lets you customize your Intuos2 tablet and tool settings for individual applications.

The APPLICATION LIST displays icons for applications with customized settings.

The TOOL LIST displays icons for tools that are customized for the above selected application.

Tab settings apply only to the selected tool and application.



Your current selections are highlighted. Wedges emphasize the relationship between tab settings and the selected tool and application.



If application-specific settings have not been created, a single icon labeled ALL APPLICATIONS is displayed in the APPLICATION LIST, and the tool settings displayed in the tabs are applied to all applications.

When a second application is added to the APPLICATION LIST, the ALL APPLICATIONS icon changes to ALL OTHER APPS, and a new icon is displayed for the new application settings.

If you select the ALL OTHER APPS icon and make changes to the tab settings, your changes will apply to all applications except the specific one(s) you have added to the list. If you select the icon for a specific application and make changes to the tab settings, your changes will apply to only that application.

When ALL APPLICATIONS or ALL OTHER APPS is selected in the APPLICATION LIST, the TOOL LIST displays icons for all Intuos2 tools that have been added to the tool list. When an icon for a specific application is selected from the APPLICATION LIST, the TOOL LIST only displays the Intuos2 tools that have been added for the selected application. When you create an application-specific setting, you are, in a sense, creating a separate TOOL LIST for the application.



Contents



Index



CUSTOMIZING

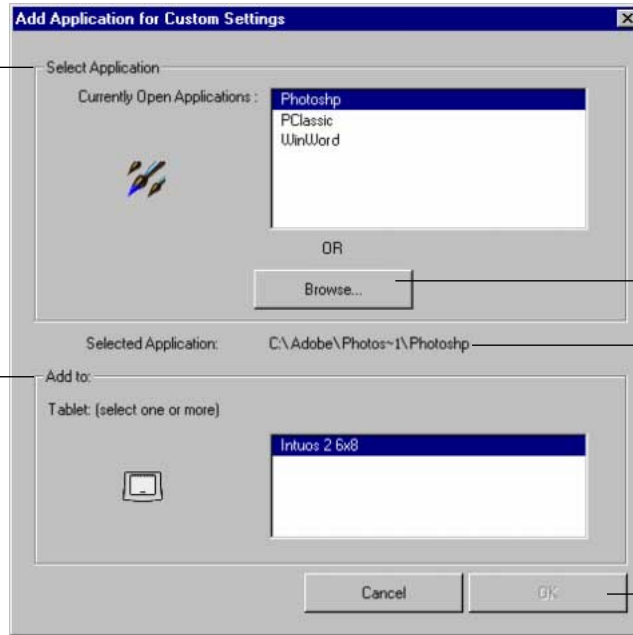
Page 90

CREATING AN APPLICATION-SPECIFIC SETTING

To create an application-specific setting, click on the ADD APPLICATION TO LIST... button or select APPLICATIONS FOR CUSTOM SETTINGS... from the ADD pull-down menu. The ADD APPLICATION FOR CUSTOM SETTINGS dialog box appears.

Select an application to add to the APPLICATION LIST. Only applications that are currently running and that have not previously been added to the APPLICATION LIST are displayed.

If you have more than one tablet, select the tablet(s) for which to add application-specific settings.



BROWSE to select the executable file of any application installed on your computer.

Note: If two programs have the same file name, they will share the same customized settings.

Displays the name of the selected application.

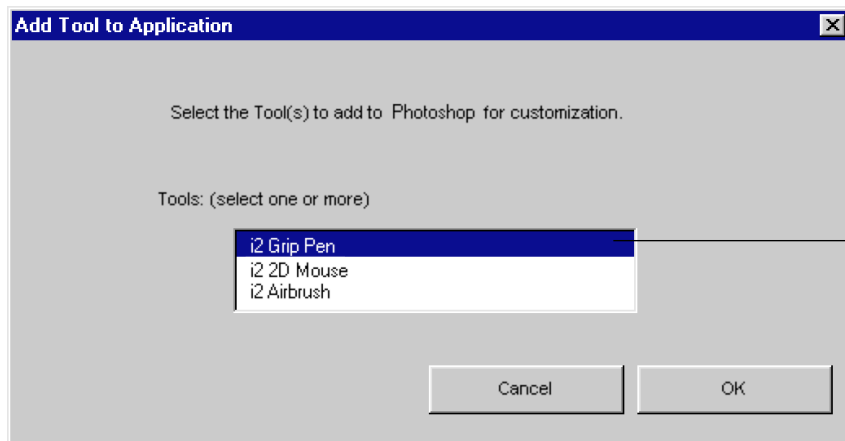
Click OK to continue.

Note: First customize settings for one application. When you feel comfortable using application-specific settings, you can create more application-specific settings.



If you are working with a single tool, it is automatically added to the TOOL LIST for the application you have added.

If you are using more than one tool, the ADD TOOL TO APPLICATION dialog box is displayed. Choose one or more tools to add to the TOOL LIST for this application. By default, the tool in your hand is selected. Click OK to confirm your selection.



Lists all tools that can be customized.

Note: All tools not selected will continue to work with the settings specified for ALL OTHER APPS.

After you have added an application, its icon appears in the APPLICATION LIST. When you select the application icon, the TOOL LIST displays only the tool(s) that have application-specific settings for the application. Any tools that do not appear in the TOOL LIST for the application will use the settings for ALL OTHER APPS. In the TOOL LIST you can select a tool and then use the tabs to change the tool settings.



ADDING ADDITIONAL TOOLS TO AN APPLICATION'S TOOL LIST

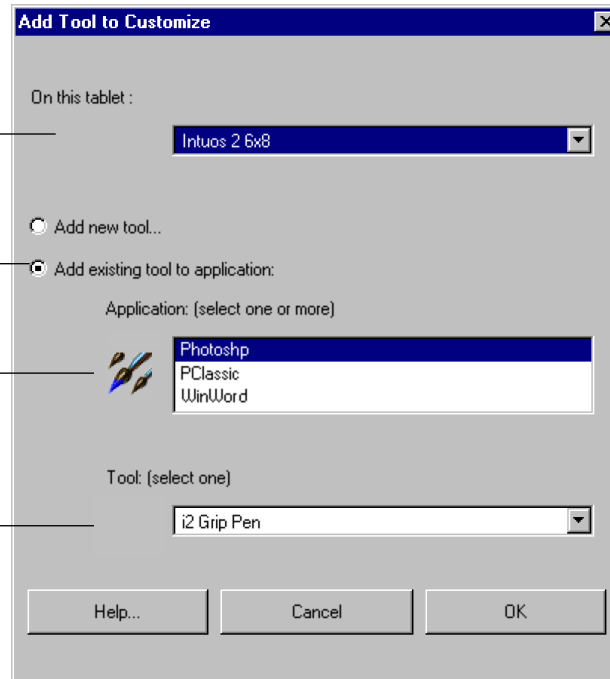
To add another tool to an application's TOOL LIST, click on the ADD TOOL TO LIST... button or select TOOL TO CUSTOMIZE... from the ADD pull-down menu. The ADD TOOL TO CUSTOMIZE dialog box appears. Choose the application and tool to create settings for. Click OK to confirm your selection. The dialog box will close, and the tool will appear in the TOOL LIST for the chosen application.

If you have more than one tablet, select the tablet(s) for which to add application-specific settings.

First select ADD EXISTING TOOL TO APPLICATION.

Choose an application. Only applications that have been added to the APPLICATION LIST are displayed.

Select a tool. Only tool(s) that have not been added to the TOOL LIST for the selected application are displayed.



CHANGING SETTINGS FOR A SPECIFIC APPLICATION AND TOOL

To change settings for a specific application and tool combination, from the APPLICATION LIST choose the application you want to change tool settings for. From the TOOL LIST, choose the tool you want to customize. Change the tab settings for the selected application and tool combination.

REMOVING APPLICATION-SPECIFIC SETTINGS

To remove application-specific settings:

1. Open the REMOVE menu and select CUSTOM SETTINGS FOR APPLICATION....
2. In the REMOVE CUSTOM SETTINGS FOR APPLICATION dialog box, select the application(s) for which you want to remove the custom settings and click OK.

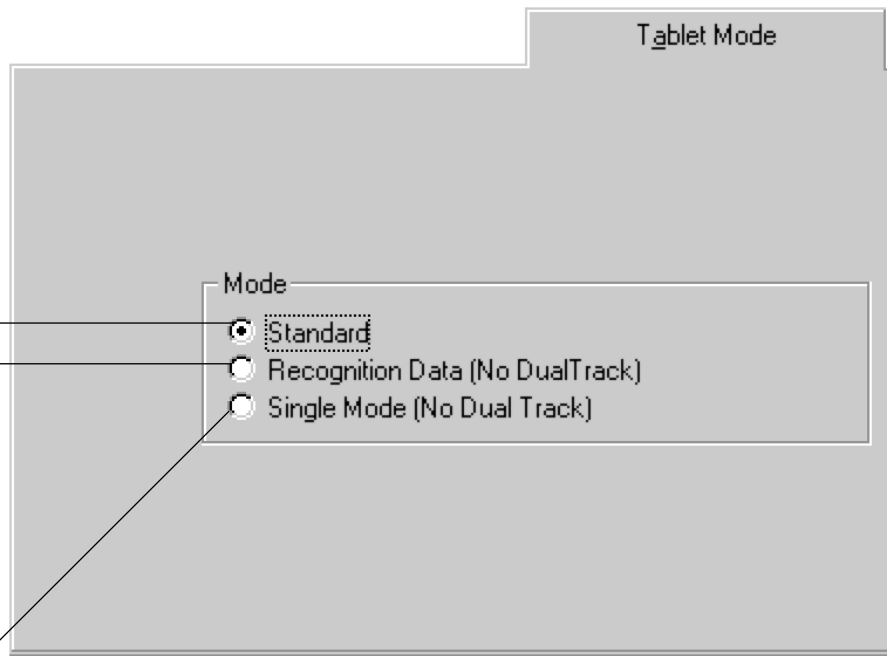
To remove application-specific settings for a tool:

1. Select CUSTOMIZED TOOL... from the REMOVE pull-down menu.
2. In the REMOVE CUSTOMIZED TOOL dialog box, select the tool to remove. Then click on the REMOVE FROM SELECTED TABLETS AND APPLICATIONS radio button and select the application that you want to remove the tool from.
3. Click OK to confirm your selections.



CHECKING YOUR USB TABLET MODE

If you are working with a USB tablet, select the **TABLET MODE** tab to check the mode your tablet is operating in.



Recommended for graphics applications.

Single tool mode at maximum data rate. Required by some handwriting recognition software.

In **SINGLE MODE**, the tablet will support only one input tool. Do not place two tools on the tablet at the same time.



CHECKING YOUR SERIAL TABLET CONNECTION

Select the CONNECTION tab to check the status of your tablet connection to the serial port.

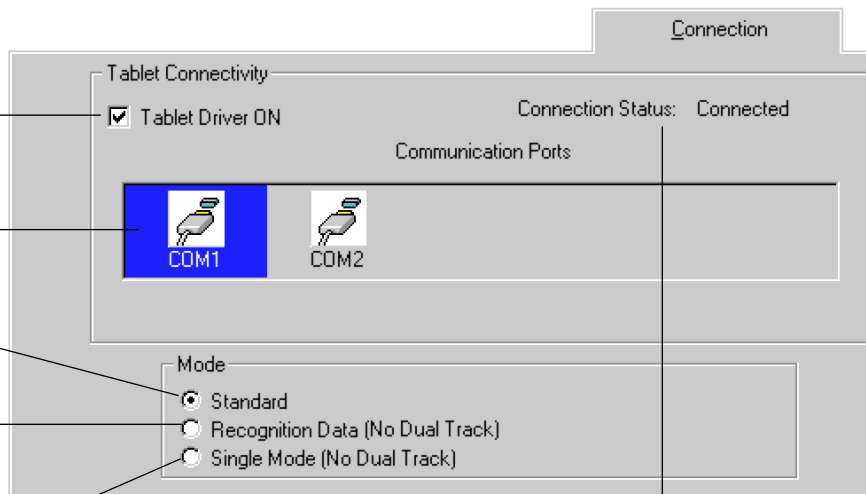
When checked, the tablet driver is on.

Displays all serial ports. The port in use by the tablet is selected. Ports used by other devices are dimmed.

Recommended for graphics applications.

Single tool mode at maximum data rate. Required by some handwriting recognition software.

In SINGLE MODE, the tablet will support only one input tool. Do not place two tools on the tablet at the same time.



Displays messages about your selected serial port.

- **CONNECTED.** The tablet is connected and responding correctly.
- **NOT RESPONDING.** There is no communication between the tablet and the computer.
- **OVERRIDDEN.** Another application has taken over control of the serial port.
- **DRIVER OFF.** The Intuos2 driver is turned off.



PULL-DOWN MENUS

Use the pull-down menus to access additional custom settings options, a language selection menu, and online documentation. Help is available for most dialog boxes that appear when you make a menu selection—just click on the dialog box HELP... button for detailed information on settings and options.



FILE

The File menu contains the following options:

- **SUMMARY....** Provides a summary of your current settings.
- **EXIT.** Exits the control panel.

EDIT

The EDIT menu contains the following options:

- **COPY SETTINGS TO....** Opens a dialog box where you can copy your customized settings to another tool or application. You can also access this dialog box by clicking on the COPY SETTINGS TO... tab button.
- **RESET SETTINGS....** Opens a dialog box where you can reset your customized settings to their factory default values.
- **RENAME TOOL....** Opens a dialog box where you can assign custom names to your tools.
- **PREFERENCES....** Opens a dialog box where you can change general Intuos2 operating preferences.



ADD

The ADD menu contains the following options:

- **TABLET....** Opens a dialog box where you can add one or more tablets. Refer to [Installing Multiple Tablets](#) for information on adding multiple tablets.
- **APPLICATION FOR CUSTOM SETTINGS....** Opens a dialog box where you can add an application to the APPLICATION LIST. This is also accessed by clicking on the ADD APPLICATION TO LIST... button. Refer to [Working with Application-Specific Settings](#) for more information.
- **TOOL TO CUSTOMIZE....** Opens a dialog box where you can add a tool to the control panel TOOL LIST. This is also accessed by clicking on the ADD TOOL TO LIST... button. Refer to [Adding a New Tool](#) for more information.

REMOVE

The REMOVE menu contains the following options:

- **TABLET....** Opens a dialog box where you can remove one or more tablets from the control panel driver.
- **CUSTOM SETTINGS FOR APPLICATION....** Opens a dialog box where you can remove custom tool settings from an application.
- **CUSTOMIZED TOOL....** Opens a dialog box where you can remove customized tools.

Note: If only one item is available for a particular REMOVE menu option, the option will be dimmed. For example, if you have only one tool the CUSTOMIZED TOOL... option will be dimmed.



LANGUAGE

The LANGUAGE menu allows you to switch between English and other installed languages. The language of the operating system is typically installed when you install the driver, but other languages can be added by running the installer a second time and choosing the additional language.

HELP

The HELP menu contains the following options:

- **HELP....** Displays online Help.
- **USER'S MANUAL....** Displays the *Intuos2 User's Manual for Windows*.
- **GETTING STARTED....** Displays an overview of the control panel.
- **DIAGNOSTICS....** Displays diagnostics information for your Intuos2 tablet and tool(s).
- **ABOUT....** Displays information about the control panel and driver.



ADVANCED FEATURES

You can use advanced features to further customize your Intuos2 Professional Graphics Tablet for the way you like to work.

[ADVANCED TIP PRESSURE SETTINGS](#)

[ADVANCED ERASER PRESSURE SETTINGS](#)

[COPYING SETTINGS](#)

[USING DUALTRACK](#)

[ADVANCED MAPPING](#)



Contents

Index

ADVANCED FEATURES

Page 100

ADVANCED TIP PRESSURE SETTINGS

To customize advanced tip pressure settings, from the TIP FEEL tab select MORE OPTIONS. The advanced options enable you to change the click pressure and pressure curve settings independently. (In the basic options display, these settings are adjusted simultaneously with the TIP PRESSURE FEEL slider.)

Important: The TIP PRESSURE FEEL slider overrides the advanced pressure settings. If you customize advanced settings, then drag the TIP PRESSURE FEEL slider, your advanced settings will be removed.

Use these controls to manually change the pressure curve shape.

The screenshot shows the 'Tip Feel' settings window. At the top, there is a 'Tip Pressure Feel' slider ranging from 'Soft' to 'Firm'. Below it, there are three main sections: 'Manual', 'Automatic', and 'Fewer Options'. The 'Manual' section contains a 'Click Force' control set to 6 and a 'Reported Pressure' control set to 6. A graph shows the relationship between 'Tip Force' (0% to 100%) and 'Reported Pressure' (0% to 100%), with a blue curve starting at (0,0) and ending at (100,100). The 'Automatic' section has a 'Draw Strokes to Set Maximum Force' control set to 100. A 'Fewer Options' button with a checkmark is on the right. A 'Test' button is on the left, and a 'Start Over' button is at the bottom right.

Annotations:

- Use these controls to manually change the pressure curve shape. (Points to the Manual section)
- Toggles to the basic options display. (Points to the Fewer Options button)
- After you set advanced settings, a checkmark appears. (Points to the checkmark on the Fewer Options button)
- Use this area to automatically set the maximum amount of force to use when drawing. (Points to the Automatic section)
- Test the results of your changes before you apply them. (Points to the Test button)

The pressure curve graphically displays the relationship between force applied to your tool and pressure reported to an application.

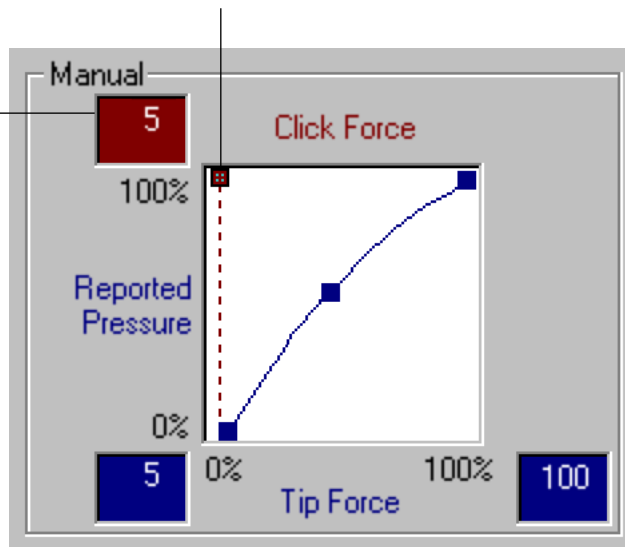


CLICK FORCE ADJUSTMENT

The click force setting adjusts the amount of force required to generate a button click.

The CLICK FORCE bar graphically displays the force level at which a click occurs.

Enter a value from 1 to 50% or drag the CLICK FORCE bar to set the force at which a click occurs.



Note: For optimal performance in graphics applications, set the click force and minimum tip force to the same value.

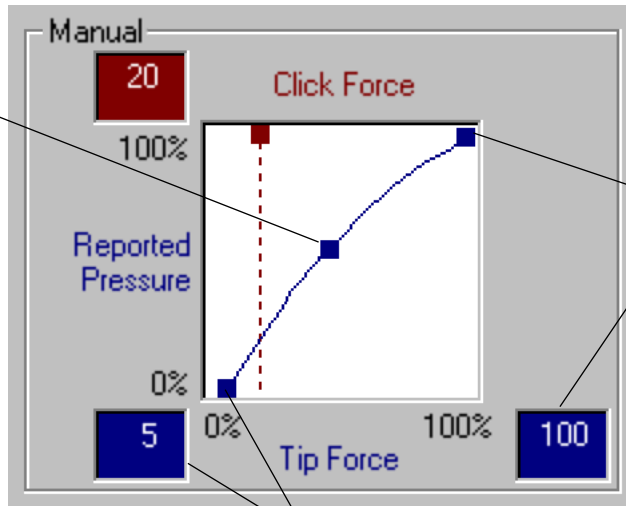


PRESSURE CURVE ADJUSTMENT

Changing the shape of the pressure curve will change the feel of the pen tip. A pressure curve that increases quickly makes the tip feel more sensitive to changes in force.

The control points at each end of the pressure curve set the minimum and maximum amount of force your pen or airbrush will respond to. If you have a soft touch and want to achieve full pressure without having to apply full force to your pen, decrease the maximum force level. You can apply less force to your pen and still have the effects of full pressure. The default for maximum force is 100%.

To change curve shape, drag the control point to a new position.

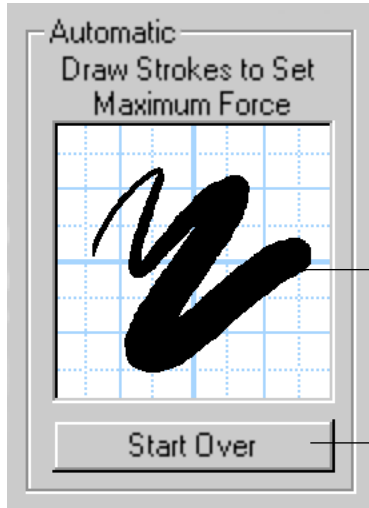


Enter a value from 20 to 100%, or drag the MAXIMUM TIP FORCE control to set the maximum force your pen tip will respond to.

Enter a value from 0 to 80%, or drag the MINIMUM TIP FORCE control to set the minimum force that will register pressure.



To automatically set the maximum force for the way you draw, click the **START OVER** button and draw several strokes in the drawing area. As you draw, the **MAXIMUM TIP FORCE** control moves, and the value in the edit box changes to reflect the peak pressure registered by your hand movements. To start over, click the **START OVER** button and begin a new drawing.



While applying normal pressure to the pen tip, draw several strokes here to automatically set the maximum force value.

Click here to reset maximum force value to the start value for this test.



[Contents](#)
[Index](#)



ADVANCED FEATURES

Page 104

ADVANCED ERASER PRESSURE SETTINGS

To customize advanced eraser pressure settings, select the ERASER FEEL tab and click on the MORE OPTIONS button. You work with the advanced eraser settings in the same manner as with the [Advanced Tip Pressure Settings](#).

Important: The ERASER PRESSURE FEEL slider overrides the advanced pressure settings. If you customize advanced settings, then drag the ERASER PRESSURE FEEL slider, your advanced settings will be removed.



Contents

Index



ADVANCED FEATURES

Page 105

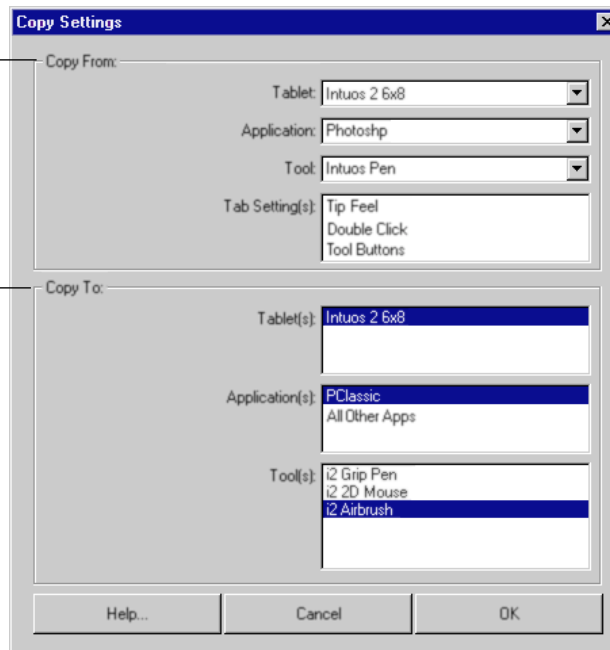
COPYING SETTINGS

To copy settings to another tool or application choose the COPY SETTINGS TO... option from the EDIT menu, or click on the COPY SETTINGS TO... button. A dialog box is displayed where you can copy settings from one tool to another within the same application or between different applications. You can also copy settings between different types of Intuos2 tools.

Note: For dissimilar tools (such as a pen and a Mouse), only those settings common to both tools (such as mapping settings) can be copied. However, if you are working with multiple Intuos2 tools of the same type, any or all settings can be copied between them.

Choose from where settings will be copied.

Select where settings will be copied to.



Contents



Index



ADVANCED FEATURES

Page 106

USING DUALTRACK

All Intuos2 tablets support the concurrent use of two Intuos2 tools on a tablet. This feature is called DualTrack.

DualTrack will function according to how an application implements support for two input tools. In some applications, two-handed input is used to rotate, size, and position an object by controlling two handles on the object simultaneously.

In applications that do not support positional data from two Intuos2 tools, the first tool placed on the tablet will control the screen cursor and the second tool will function as a Button Box. If you are using a graphics program, for example, you can set one of the 4D Mouse buttons to simulate the SHIFT key to constrain lines while drawing. If you place the 4D Mouse on the tablet's active area while using the pen, the 4D Mouse will not control the screen cursor—only the buttons will function. If you press the 4D Mouse button assigned to the SHIFT function while drawing with the Intuos2 Pen, the line will be constrained as long as the 4D Mouse button is pressed.

Note: DualTrack is the default setting for the tablet. When STANDARD MODE is selected in the TABLET MODE or CONNECTION tab, DualTrack is on. Note also that the 2D Mouse does not support DualTrack.

Visit our web site for a list of applications that support DualTrack. See [Product Information](#).



Contents

Index



ADVANCED FEATURES

Page 107

ADVANCED MAPPING

The ability to adjust basic mapping features is sufficient for most users. However, if your work demands a high degree of flexibility, you can have additional control over your tablet to display settings by clicking on the **ADVANCED MAPPING...** button (located on the **MAPPING/SPEED** tab) to display the **ADVANCED MAPPING** dialog box. Here, you can define multiple different tablet to screen mappings.

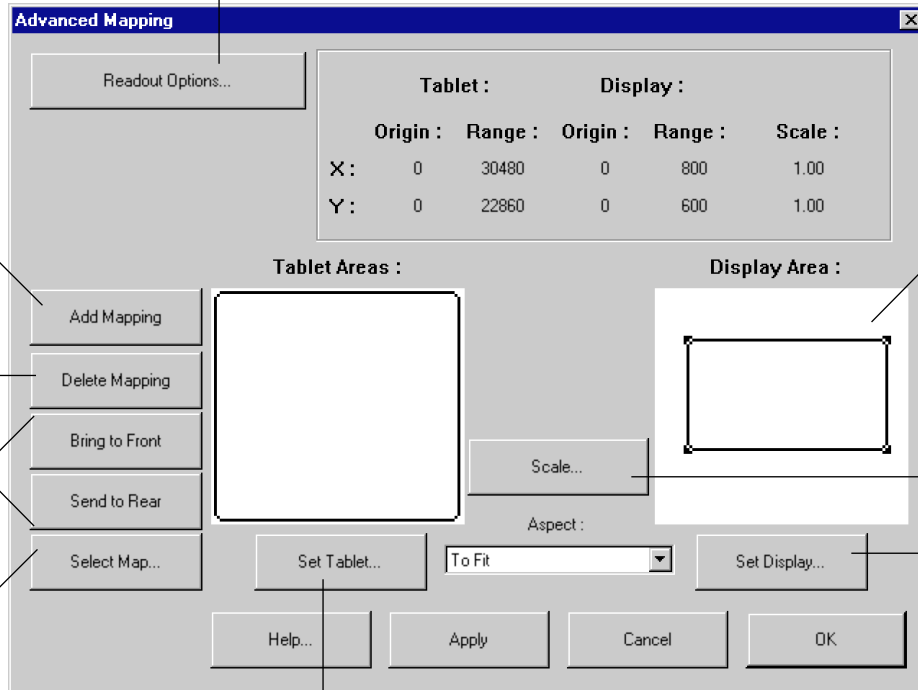
Changes units, origin, and range or size displayed in the status bar.

Creates a new mapping.

Removes the active map. Be sure to first select the correct map.

Changes the relative position of maps.

Selects an existing map. You can also click on the map.



Shows only the display area that corresponds to the selected mapping.

Sets scale for PROPORTIONAL or TO FIT aspect ratios.

Defines the screen area for each tablet mapping.

Defines a tablet area for each mapping.



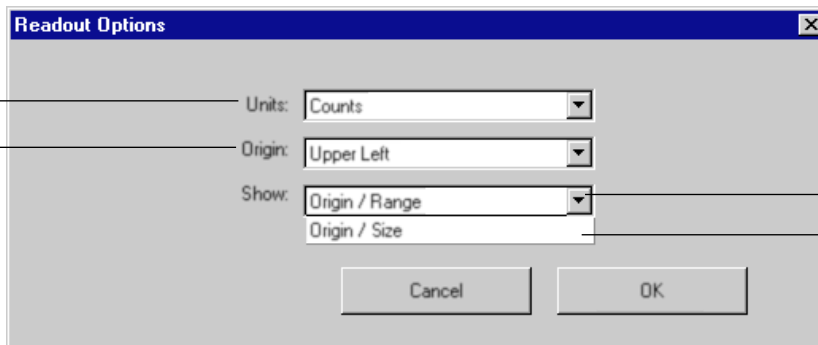
Before you begin, verify that you have selected the correct application and tool for which you want to create advanced mappings. Then plan your mapping area(s). For example, you may want to define a small area for navigation, and a larger one for drawing.

For best results, patiently complete each of the following steps:

1. Set preferences by clicking on the READOUT OPTIONS... button. From the READOUT OPTIONS dialog box, select an option from each pull-down menu. Click OK to confirm your selections.

Measurement units can be in inches, cm, points, or counts. Counts are lines of tablet resolution or screen pixels.

Starting point where measurements originate, from upper left or lower left corner.



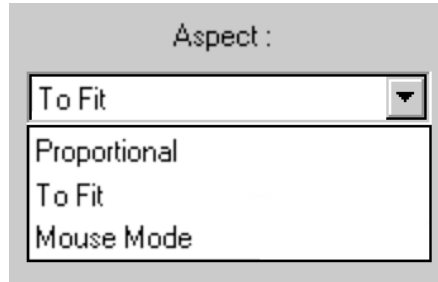
Coordinates of the origin and the diagonal corner.

Coordinates of the origin and the height and width of the area.

2. Select the tablet mapping to define. The mapping numbers are displayed in the top left corner of each tablet area graphic. If multiple tablet mappings have been defined, click inside the tablet area you want to select or click on the SELECT MAP... button and type the number of the mapping you want to select.



3. Define the size of the tablet area by dragging the handles of the selected tablet area. Then click and drag the tablet area to the desired position. For more precise control in selecting the tablet area, click the SET TABLET... button to access the [Portion of Tablet](#) dialog box. There, you can define the tablet area in a variety of ways.
4. From the ASPECT pull-down menu, select an option. These options work similarly to normal mapping. If you choose PROPORTIONAL or TO FIT, you can set an exact scale factor.



- **Proportional.** Maintains the correct vertical and horizontal proportions. However, the drawing may display larger or smaller on the screen. To set the scale, click the SCALE... button. In the SET SCALE FACTOR dialog box, enter a value to define the tablet to screen ratio. For example, a scale factor of 2 will make two inches on the tablet equal to one inch on the screen.



- **To Fit.** Maps the selected tablet area to the selected screen area. The scale and the vertical and horizontal proportions are not maintained. To set the scale, click the SCALE... button. In the SET SCALE FACTOR dialog box, enter values to define the tablet to screen ratios for the x and y axes. The ratio between x- and y-scale factor indicates how much a traced image will be distorted by the mapping relationship between tablet and screen. For example, an x-scale factor of 2 makes two inches on the tablet's x axis equal to one inch on the screen's x axis. A y-scale factor of 3 makes three inches on the tablet's y axis equal to one inch on the screen's y axis.
 - **Mouse Mode.** Sets the area to position the screen cursor in Mouse Mode.
5. Define the size of the display area by dragging the handles of the selected display area. Then click and drag the display area to the desired position. For more precise control in selecting the display area, click the SET DISPLAY... button to access the [Portion of Display](#) dialog box. There, you can define the display area in a variety of ways.
 6. To create additional tablet mappings, click on the ADD MAPPING button. A new mapping is created with the entire tablet area mapped to the entire display area. Repeat the above steps to size and position the tablet and display areas for each mapping you add.
- If you define overlapping tablet areas, the tablet area with a lower number will always be above (in front of) the areas with a higher number and will have precedence for positioning the pointer on the screen. Use the BRING TO FRONT and SEND TO REAR buttons to change the relative positions of the maps. For example, if you have created multiple mappings, SEND TO REAR will move a selected mapping to the "bottom" of the stack.



7. Click OK to confirm your changes and close the dialog box.

To exit the dialog box without making changes, click CANCEL.

Notes:

- To remove a mapping, select the mapping to be removed and click on the DELETE MAPPING button. To quickly remove all advanced mappings from a tool, in the MAPPING/SPEED tab, click RESET TAB TO DEFAULTS for that particular application and tool. This also resets all MAPPING/SPEED tab settings to defaults.
- The advanced mapping settings used for mapping 1 are the settings that will appear under the MAPPING/SPEED tab.
- [Copying Settings](#) enables you to use your advanced mapping settings for other tools and applications as well.



Contents

Index



ADVANCED FEATURES

Page 112

HAVING TROUBLE?

Most of the time your tablet will work flawlessly. But if you are having trouble, Wacom recommends you do the following:

1. Refer to the troubleshooting procedures described in this chapter.
2. Look in the troubleshooting tables. Your problem may be described there and you can try the solution offered.
3. Open the Intuos2 Readme file for late-breaking information.
4. If you are having a compatibility conflict between Intuos2 and a new hardware or software product, it may be helpful to download a new Wacom tablet software driver. Wacom periodically updates the software driver to maintain compatibility with new products. See [Who to Call](#) for your region.
5. Check the FAQs (Frequently Asked Questions) on the Wacom web site for your region. See [Who to Call](#).
6. If you have tried the suggestions in this manual and still cannot resolve the problem, then contact Wacom for Technical Support.

[TROUBLESHOOTING](#)

[TROUBLESHOOTING TABLES](#)

[CONTACTING TECHNICAL SUPPORT](#)



Contents



Index

HAVING TROUBLE?

Page 113

TROUBLESHOOTING

If the Wacom Tablet driver failed to load properly, first perform the recommended action in the error message on your screen. If that does not solve the problem, perform the troubleshooting tests for your tablet or tool(s).

TESTING USB TABLETS

TESTING SERIAL TABLETS

TESTING YOUR INTUOS2 TOOLS

TESTING USB TABLETS

Make sure your computer is turned on, the operating system has finished loading, and Intuos2 is properly connected to an active USB port. Then try the following tests:

1. **Check the tablet.** The tablet's orange status LED will light whenever Intuos2 is properly connected and your computer has registered it as a USB device. If the LED is on, continue with step 2.

If the LED is off:

- Make sure the USB cable is securely connected to an active USB port. Intuos2 requires that you connect to a primary USB port (located directly on your computer) or to a powered USB hub.
- If you are connecting the tablet to a powered USB hub, be sure the USB hub is properly connected to your computer and is active.
- Connect Intuos2 into a different USB port or try connecting to the USB port on another computer.
- Make sure your computer is USB ready. See [Verifying Your Computer is USB Ready](#).



Contents

Index



HAVING TROUBLE?

Page 114

2. **Check the pen.** Move your Intuos2 Pen across the active area of the tablet; the screen cursor should move in the corresponding direction on your monitor. Press the pen tip against the tablet surface. The status LED on the tablet should turn from orange to green. Now, without applying pressure to the pen tip, press the side switch. The status LED should again change from orange to green. Turn the pen over and press the eraser against the surface of the tablet; the status LED should change from orange to green. If not, you may have a defective pen or tablet. See [Contacting Technical Support](#).

Verifying Your Computer is USB Ready

Intuos2 USB tablets require Windows 98, Me, 2000, or XP. Many PCs that shipped with Windows 95 have the USB port disabled in the BIOS. If you upgraded from Windows 95 to a newer version of Windows, verify that the USB ports are enabled in the BIOS and that all necessary system software has been installed. Refer to your system documentation or contact your system manufacturer for information on enabling USB support for your computer.

Run the USB Ready utility located on the Wacom Tablet CD to check if your system is USB ready.

If your system is not USB ready, correctly configure your USB port and install the necessary USB system software, then restart your computer. The NEW HARDWARE FOUND dialog should appear and you can continue with the Intuos2 installation.

Always be sure your tablet is plugged directly into your computer or into a powered USB hub.



TESTING SERIAL TABLETS

Make sure your Intuos2 tablet is properly connected and that power is on to both your computer and tablet.

1. **Check power to the tablet.** You should see the tablet's orange status LED whenever the tablet cable is connected to AC power, the power switch is turned on, and your AC power adaptor is plugged in. If not, try the following:
 - Make sure the AC power adaptor is securely connected to the tablet cable.
 - Make sure the AC power supply is plugged into an active outlet.
 - Make sure the tablet is turned on (12x12/A4-oversize and larger tablets).

Important: Use only the AC adaptor that came with Intuos2. Other adaptors may cause damage to your tablet.

If the orange status LED did not come on, you may have a defective tablet or power supply. See [Contacting Technical Support](#).

2. **Check the serial connection.** Open the Wacom control panel to the CONNECTION tab. It should indicate that the tablet is responding. If not, make sure that the tablet cable (and adaptor cable, if used) is properly connected to an active serial communication port.
3. **Check the pen.** Press the pen tip against the surface of the tablet. The status LED on the tablet should turn from orange to green. Now, without applying pressure to the pen tip, press the side switch. The status LED should again turn from orange to green. If not, you may have a defective pen or tablet. See [Contacting Technical Support](#).



Contents



Index



HAVING TROUBLE?

Page 116

TESTING YOUR INTUOS2 TOOLS

From the Wacom control panel's HELP menu, select DIAGNOSTICS... to open the DIAGNOSTICS dialog box. The DIAGNOSTICS dialog box displays the tablet driver version and information about the tablet hardware and pointing devices.

TESTING A PEN OR AIRBRUSH

TESTING A 2D MOUSE

TESTING A 4D MOUSE OR LENS CURSOR

Testing a Pen or Airbrush

1. While observing the POINTING DEVICE INFO column, bring your Intuos2 tool within proximity of the tablet. A value for proximity, the device name, device type, and a device serial number should be displayed.
2. Move your tool along the tablet surface. The X and Y DATA values should change to reflect the tool position.
3. Test your Intuos2 Pen or Airbrush buttons. The tablet's status LED should change color from orange to green each time you click with the tool tip, press the side switch, or press the tool's eraser to the tablet.
 - Click on the tablet surface with the tool tip—the SWITCHES state and PRESSURE value should change. (PRESSURE should change from approximately 0% with no pressure applied to approximately 100% when full pressure is applied.)
 - Next, press the side switch without pressing the tip to the tablet—the SWITCHES state should change. (For the Intuos2 Pen, do this for both positions of the DuoSwitch.)

Pen Tip = 1, DuoSwitch (lower position) = 2, DuoSwitch (upper position) = 3, Eraser = 1

Airbrush Tip = 1, Side Switch = 2, Eraser = 1



HAVING TROUBLE?

Page 117

- Then press the tool's eraser to the tablet—the SWITCHES state and PRESSURE value will change. (PRESSURE should change from approximately 0% with no pressure applied to approximately 100% when full pressure is applied.)
 - For the airbrush, move the fingerwheel forward—the WHEEL value should decrease to a value of approximately 0 when the fingerwheel is all the way forward. Move the fingerwheel backward—the WHEEL value should increase to approximately 1000 when the fingerwheel is all the way back.
4. Test tilt for the x-axis by moving the Intuos2 Pen or Airbrush from a vertical position toward the right; the X TILT value should change from approximately 0 to +60 (0 to +50 for Intuos2 4x5/A6 tablets). Now move the tool to the left of vertical; the X TILT value should change from approximately 0 to -60 (0 to -50 for Intuos2 4x5/A6 tablets).
 5. Test tilt for the y-axis by moving the Intuos2 Pen or Airbrush from a vertical position toward the bottom of the tablet; the Y TILT value should change from approximately 0 to +60 (0 to +50 for Intuos2 4x5/A6 tablets). Now move the tool toward the top of the tablet; the Y TILT value should change from approximately 0 to -60 (0 to -50 for Intuos2 4x5/A6 tablets).
 6. When you are done, click on the CLOSE button to exit the dialog box.



Testing a 2D Mouse

1. Test the buttons on your 2D Mouse by clicking each button. The tablet's status LED should change color, and the SWITCHES state should change for each button you click.



Intuos2 2D Mouse

2. When the DIAGNOSTICS dialog box is first opened the WHEEL status should be 0. Move the fingerwheel backward. The WHEEL status should change from 0 to +1.
3. Move the fingerwheel forward. The WHEEL status should change to -1.
4. When you are done, click on the CLOSE button to exit the dialog box.



Testing a 4D Mouse or Lens Cursor

1. Test the buttons on your 4D Mouse or Lens Cursor by clicking each button. The tablet's status LED should change color, and the SWITCHES state should change for each button you click.



4D Mouse



Lens Cursor

Note: Objects not shown to scale.

2. If you are testing a 4D Mouse, move the fingerwheel to the front, center, and rear positions. The WHEEL status should change from approximately +1023 to -1023, with a center value of zero.
3. If you have a 4D Mouse, rotate it on the tablet. The ROTATION value should change to reflect your movement.
4. When you are done, click on the CLOSE button to exit the dialog box.



Contents

Index



HAVING TROUBLE?

Page 120

TROUBLESHOOTING TABLES

If you encounter problems with your Intuos2 tools or tablet, refer to the following tables. Your problem may be described here, and you can try the solution offered. Be sure you refer to the Readme file for the latest troubleshooting information.

[USB TABLET PROBLEMS](#)

[SERIAL TABLET PROBLEMS](#)

[GENERAL PROBLEMS](#)

[WINDOWS PROBLEMS](#)

USB TABLET PROBLEMS

The computer does not have an available USB port.

Check if there is an available USB port on a powered USB hub. If none are available you will need to add a powered USB hub.

The tablet status LED is off.

Your computer must be USB ready (see [Verifying Your Computer is USB Ready](#)).

Verify that the tablet's USB cable is plugged into a primary USB port (directly into your computer) or into a powered USB hub. Make sure the hub is connected to an active USB port. Refer to [Testing USB Tablets](#) for instructions.

Run SETUP from the Wacom Tablet CD and reinstall the Intuos2 driver software.

The pen works only in Mouse Mode, and does not draw with pressure-sensitivity.

The Wacom driver software was not installed or did not load properly. Make sure the Wacom driver software is installed and functioning. Insert the Wacom Tablet CD into your computer and install the driver software for the Intuos2 tablet.



Contents



Index



HAVING TROUBLE?

Page 121

SERIAL TABLET PROBLEMS

The computer does not have an available serial port.

Remove an existing peripheral serial device and any associated device drivers for that hardware, or add an additional serial port. Then install Intuos2.

The tablet power light is off.

Make sure you are using the AC power adaptor that came with your tablet. It should be plugged into an active wall outlet and securely connected to the Intuos2 tablet cable. Be sure your computer is off before disconnecting or connecting your tablet. If you have a 12x12/A4-oversize or larger tablet, be sure you have turned the power switch on. If the tablet's power light still does not turn on, you may have a defective power adaptor or tablet (see [Contacting Technical Support](#)).

The Intuos2 tool buttons do not work and the screen cursor will not move.

Open the Wacom control panel and go to the CONNECTION tab. Verify that TABLET DRIVER ON is checked. If not, use your mouse to select it. If you do not have a mouse attached to your computer, use the TAB key to select the checkbox and then press the spacebar to toggle the driver on.



Contents

Index



HAVING TROUBLE?

Page 122

GENERAL PROBLEMS

Double-clicking is difficult.

Be sure you are quickly tapping the tablet twice in the same place on the tablet's active area. Wacom recommends using the side switch to double-click (review the techniques in [Clicking](#)).

Try increasing the DOUBLE-CLICK DISTANCE or reducing the double-click speed (see [Adjusting Double-Click](#)).

Try using a lighter TIP PRESSURE FEEL (see [Adjusting Tip Feel](#)).

The 4D Mouse or Lens Cursor buttons work but the screen cursor will not move.

Open the Wacom control panel and go to the TOOL BUTTONS tab for your 4D Mouse or Lens Cursor. Make sure the USE BUTTONS ONLY checkbox is deselected.

The Intuos2 Pen or Airbrush selects everything, will not stop drawing.

Open the Wacom control panel and go to the tool's TIP FEEL tab. Move the TIP PRESSURE FEEL slider toward FIRM, or select the MORE OPTIONS button and increase the CLICK FORCE setting. If this does not help, refer to [Testing Your Intuos2 Tools](#).

The eraser selects everything or will not stop erasing.

Open the Wacom control panel and go to the ERASER FEEL tab. Move the ERASER PRESSURE FEEL slider toward FIRM, or select the MORE OPTIONS button and increase the CLICK FORCE setting. If this does not help, refer to [Testing Your Intuos2 Tools](#).

There is a delay at the beginning of pen strokes when using the Intuos2 Pen or Airbrush for drawing or selecting.

Try decreasing the DOUBLE-CLICK DISTANCE or increasing the double-click speed (see [Adjusting Double-Click](#)). If that does not work, try unchecking the DOUBLE-CLICK ASSIST checkbox.



Contents



Index



HAVING TROUBLE?

Page 123

You have to press hard with the Intuos2 Pen or Airbrush when clicking or drawing.

Open the Wacom control panel and go to the tool's TIP FEEL tab. Move the TIP PRESSURE FEEL slider toward SOFT, or select the MORE OPTIONS button and decrease the CLICK FORCE setting.

The Intuos2 Pen or Airbrush tip does not function.

Make sure the status LED changes from orange to green when the tip is pressed. If it does not, you may have defective hardware (see [Testing Your Intuos2 Tools](#)).

Check the control panel's TOOL BUTTONS tab and verify that the tip is assigned to a LEFT-CLICK function.

The side switch does not work.

Be sure you press the side switch when the pen tip is in proximity—do this without pressing down on the pen tip.

From the Wacom control panel, verify that the side switch is set to the proper function for the application and tool that you are using. Verify also that the SIDE SWITCH EXPERT MODE preferences option is deselected. (The PREFERENCES dialog box is accessed from the EDIT menu option.)

Make sure the tablet status LED changes from orange to green when you press the side switch. If it does not, you may have defective hardware (see [Testing Your Intuos2 Tools](#)).

Changing the function settings for the Intuos2 tools has no effect.

Make sure that you change the settings for the tool and the application that you are using. See [Working with Multiple Tools](#) and [Working with Application-Specific Settings](#).



Contents



Index



HAVING TROUBLE?

Page 124

The screen cursor jumps back.

When your Intuos2 tool is not in use, place it in the pen stand or some location near the tablet, but not on the tablet. Leaving your tool on the tablet may interfere with screen cursor positioning when using other input devices.

When using the tablet the screen cursor is very erratic or jumps around.

On rare occasions the tablet may receive interfering radio frequencies from a computer monitor or nearby AM radio station. If you notice interference, try the following:

- Set the tablet to SINGLE MODE. For USB tablets this option is located on the TABLET MODE tab. For serial tablets it is located on the CONNECTION tab.
- Move the tablet at least 6 inches away from the monitor, or change the refresh rate or monitor resolution.

Cannot move the cursor where you want to on the screen, or the line you are drawing does not line up with the location of the pointer in paint applications.

Open the Wacom control panel and go to the MAPPING/SPEED tab. Verify that PEN MODE is selected and that the DISPLAY AREA is set to ENTIRE DISPLAY for the selected tool and application. If this does not help, click on the RESET TAB TO DEFAULTS button to reestablish tablet to screen mapping.

If this does not work, open the Windows folder and delete the TABLET.DAT file. Then restart your computer. When the tablet driver loads, it will create a new preferences file with the factory default settings.



[Contents](#)

[Index](#)



[HAVING TROUBLE?](#)

Page 125

WINDOWS PROBLEMS

After pressing CTRL+ALT+DEL, the screen cursor cannot be controlled with your Intuos2 tool.

Windows 98 or Me. When working with multiple monitors, the screen cursor positioning is incorrect after moving into the unmapped area of the virtual desktop.

Windows NT 4.0. Application-specific settings do not work correctly or blue screen crash occurs.

When the CLOSE PROGRAM dialog box (Windows 95, 98, or Me) is active, the Wacom tablet will not work. Use your mouse or keyboard to continue. When this dialog box is closed, you can again use your Intuos2 tool to control the screen cursor.

On a multiple monitor system, the tablet is mapped to the virtual desktop (a rectangular area covering all monitors). In the Wacom control panel's PORTION OF DISPLAY dialog box, the screen rectangle represents the entire virtual desktop.

If your video display areas do not form a rectangle because they are different sizes or they are not evenly aligned, the screen cursor positioning will be incorrect after moving into the unmapped area of the virtual desktop. To reestablish the correct screen cursor position, lift your Intuos2 tool out of tablet proximity and bring it back into proximity over an area of the tablet that is mapped to a display area.

You must update the operating system with Service Pack 3 (SP3) or later in order for application-specific settings to work correctly. Running your Intuos2 tablet software on a Windows NT 4.0 system that is not updated to SP3 may cause you to experience a blue screen crash.



Contents



Index



HAVING TROUBLE?

Page 126

CONTACTING TECHNICAL SUPPORT

If you have a problem with your Wacom tablet, first check the tablet installation guide and [Having Trouble?](#) to be sure the tablet is installed correctly. If you cannot find the answer in this manual, you may find updated information about your problem in the Readme file located on the Wacom Tablet CD. For information on accessing Wacom's 24-hour automated online support and for a directory of Wacom Technical Support numbers, see [Who to Call](#) for your region.

LINKING TO THE WEB PAGE

Answers to frequently asked questions and troubleshooting tips can be found on the appropriate web site for your area in [Who to Call](#).

PRE-CONTACT CHECKLIST

You might want to print a copy of this page for reference. When you call, you should be at your computer with the following information available:

- This manual.
- Tablet serial and model number. (Look on the bottom of the tablet.)
- Driver version number. (See the Wacom Tablet CD or Wacom control panel [Diagnostics](#) dialog box.)
- The make and model of your computer, and operating system version.
- A list of peripheral devices attached to your computer.
- The exact wording of any error message that appeared on your screen.
- What happened and what you were doing when the problem occurred.
- How you tried to solve the problem.



Contents

Index



HAVING TROUBLE?

Page 127

WHO TO CALL

If you think your Wacom tablet is not working properly, contact the Wacom support staff for the area where your product was purchased. If you have a modem, you can download the latest software drivers from the Internet.

[USA, CANADA, CENTRAL AND SOUTH AMERICA](#)

[EUROPE, MIDDLE EAST AND AFRICA](#)

[JAPAN](#)

[ASIA PACIFIC \(ENGLISH\)](#)



Contents

Index



HAVING TROUBLE?

Page 128

USA, Canada, Central and South America

Contact your local distributor, or:

Worldwide Web: <http://www.wacom.com/productsupport>

24-hour Technical Support information:
FAQs—Frequently Asked Questions
and answers. (English)
Software updates. (English)
Email support. (English)

Anonymous FTP Site: <ftp.wacom.com/pub/drivers>

Software updates.

Phone: ++1-360-896-9833

Technical Support. (English)
(7:30 am to 5:00 pm, Pacific Time)

FAX: ++1-360-896-9724

Technical Support. (English)

Internet Email: support@wacom.com

Automated mailback support. (English)

To purchase parts and accessories, call toll-free: 1-888-884-1870 (USA and Canada only) or visit Wacom's web site at <http://www.wacom.com/wacomdirect/> (USA only). Outside of the USA and Canada, please contact your local dealer or distributor.



Contents

Index



HAVING TROUBLE?

Page 129

Europe, Middle East and Africa

Contact your local distributor, or:

Worldwide Web:	http://www.wacom.de	Software updates, Online support database.
Anonymous FTP Site:	ftp.wacom.de/pub	Software updates.
Phone (Austria):	++43-(0)1-790 825 550	Technical Support.
Phone (Belgium):	++32-(0)2-275 0691	Technical Support.
Phone (France):	++33-(0)1-7020 0070	Technical Support.
Phone (Germany):	++49-(0)69-6630 8200	Technical Support.
Phone (Italy):	++39-(0)2-4528 7050	Technical Support.
Phone (Netherlands):	++31-(0)20-517 4705	Technical Support.
Phone (Switzerland):	++41-(0)1-212 2818	Technical Support.
Phone (United Kingdom):	++44-(0)207-744 0831	Technical Support.
Phone (other countries):	++49-(0)180-500 4397	Technical Support.
FAX:	++49-(0)180-500 4398	Technical Support.
Internet Email:	support@wacom.de	Technical Support.

To purchase parts and accessories, please contact your local dealer or distributor. You can also contact Technical Support using the appropriate number for your region.



Contents



Index



HAVING TROUBLE?

Page 130

Japan

Contact your local distributor, or:

Worldwide Web:	http://tablet.wacom.co.jp	Software updates and information. (Japanese)
Phone:	++81-(0)47-380-8877	Technical Support. (Japanese)
FAX:	++81-(0)47-380-8711	Technical Support. (Japanese)
Internet Email:	tablet@wacom.co.jp	Technical Support and sales. (Japanese)

To purchase parts and accessories, please contact your local dealer or distributor.

Asia Pacific (English)

Contact your local distributor, or:

Worldwide Web:	http://ap.wacom.co.jp	Software updates and information. (English)
Phone:	++81-(0)3-3371-1595	Technical Support. (English)
FAX:	++81-(0)3-3371-1468	Technical Support. (English)
Inquiry Form:	http://ap.wacom.co.jp/faq/tablet/inquiry_form.html	Technical Support. (English)

To purchase parts and accessories, please contact your local dealer or distributor.



Contents

Index



HAVING TROUBLE?

Page 131

APPENDICES

This section contains information on working with multiple tablets and working with AutoCAD. You will also find product specifications, a listing of available parts and accessories, and license and warranty information.

[UNINSTALLING THE SOFTWARE](#)

[REGISTRATION](#)

[PRODUCT INFORMATION](#)

[INSTALLING MULTIPLE TABLETS](#)

[WORKING WITH AUTOCAD](#)

[PRODUCT SPECIFICATIONS](#)

[PARTS AND ACCESSORIES](#)

[LICENSE AND WARRANTIES](#)

[LICENSE AND WARRANTIES \(EUROPE\)](#)



Contents

Index

UNINSTALLING THE SOFTWARE

To remove the Intuos2 software from your system:

1. Click the Windows START button. Then choose SETTINGS and CONTROL PANEL.
2. In the CONTROL PANEL window, double-click on the ADD/REMOVE PROGRAMS icon.
3. In the dialog box that appears, choose the Wacom tablet option.
4. Click on the ADD/REMOVE... button and follow the prompts to remove the Intuos2 software driver.

For Windows XP: Click START. In the start menu, select CONTROL PANEL. Then select ADD OR REMOVE PROGRAMS. In the ADD OR REMOVE PROGRAMS window, choose WACOM TABLET DRIVER and click on the CHANGE/REMOVE button. Follow the prompts to remove the software driver.

REGISTRATION

Please be sure to register your product. Depending on your region, the Wacom tablet may come with a Registration Card that you should complete and mail, or you may be prompted to register online during the installation process.

PRODUCT INFORMATION

To learn more about which software applications currently support your Intuos2 tablet and tools, visit the Wacom web site for your region:

USA, Canada, Central and South America	http://www.wacom.com/productinfo
Europe, Middle East and Africa	http://www.wacom.de/products/ (Germany) http://www.wacom.co.uk/products (Other countries)
Japan	http://tablet.wacom.co.jp
Asia Pacific (English)	http://ap.wacom.co.jp



Contents

Index



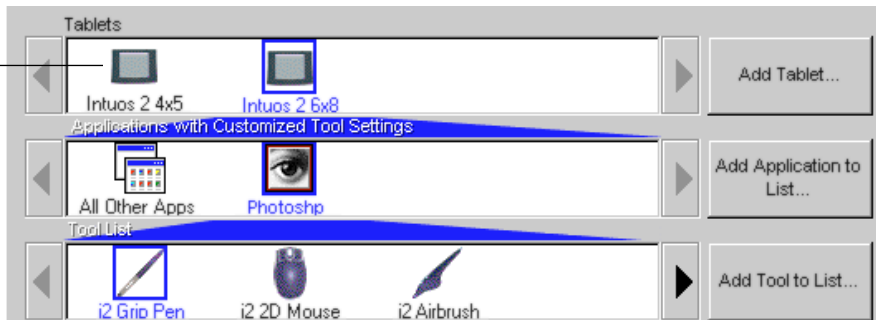
APPENDICES

Page 133

INSTALLING MULTIPLE TABLETS

If multiple Wacom tablets are installed on a single computer when the Wacom control panel is opened, a TABLET LIST is displayed above the APPLICATION LIST. The TABLET LIST contains an icon for each installed tablet, and allows you to select the tablet for which your changes will apply.

Select a tablet icon for which to customize application and tool settings.



To add a new tablet, connect it to your computer.

- For USB tablets, the system searches the USB ports. When the new tablet is found, it is automatically initialized.
- For serial tablets, if your Windows system supports “plug and play”, the system searches the serial ports when the system boots up. If the new tablet is found, it is automatically initialized. Otherwise, from the control panel’s ADD menu, choose TABLET.... When the Add Tablet dialog box appears, click the ADD SERIAL... button and follow the prompts.
- If multiple tablets are installed, the tablet used to open the Wacom control panel is selected as the default tablet. Note that pressure will only be available for the first installed tablet.



WORKING WITH AUTOCAD

AutoCAD for Windows can support the Intuos2 tablet as a System Pointing Device or as a Wintab Compatible Digitizer. By default, AutoCAD is configured to use Intuos2 as a System Pointing Device. If you will be using Intuos2 with tablet menus or to digitize drawings to proper scale, you will need to follow the procedures below.

Note: To configure the Lens Cursor or Mouse for left handed use when digitizing in AutoCAD or in other programs that look at button numbers instead of the assigned button function, select the LEFT HANDED option in the PREFERENCES dialog box (accessed from the EDIT pull-down menu).

CONFIGURING FOR A WINTAB COMPATIBLE DIGITIZER

For AutoCAD Release 2000i:

1. Start AutoCAD. Open the TOOLS menu and select OPTIONS.
2. From the OPTIONS window, select the SYSTEM tab.
3. Under CURRENT POINTING DEVICE, select the Wintab compatible digitizer option.
4. Decide from which device AutoCAD will accept input. Choose an option from the ACCEPT INPUT FROM section:
 - **DIGITIZER ONLY.** The AutoCAD drawing editor only accepts input from Intuos2.
 - **DIGITIZER AND MOUSE.** The AutoCAD drawing editor accepts input from both Intuos2 and your mouse.
5. Click OK to close the OPTIONS window.



CONFIGURING TABLET MENUS AND SCREEN POINTING AREAS IN AUTOCAD

A screen pointing area is a rectangular region on the tablet surface where the tablet acts like a system mouse. When the pointer is within a screen pointing area, the tablet can access windows, menus, and other applications outside AutoCAD's drawing area. You can configure both a fixed and floating screen pointing area.

Before you configure the tablet, its entire surface is the fixed screen pointing area. AutoCAD recommends that you change the size of the fixed screen pointing area so that a small screen area on your tablet maps to the entire monitor screen. AutoCAD also recommends that you select the default tablet menus, columns, and rows they provide.

After you configure the tablet menus, AutoCAD prompts you for the fixed and floating screen pointing areas. This allows you to designate a tablet area as a Windows system pointer.

The fixed screen pointing area is disabled when you digitize points into AutoCAD with TABLET MODE ON. This is due to the fixed correspondence between the tablet and AutoCAD's drawing area. To access menus from the tablet, you must use the floating screen pointing area. This allows you to access a menu from anywhere on the tablet surface, and to toggle it off when finished. You can define a tool button to toggle the floating screen area on and off.

Important. The floating screen pointing area takes precedence over menu areas, TABLET MODE ON, and the fixed screen pointing area.



1. From the DRAWING EDITOR, open the TOOLS menu (OPTIONS menu for Release 13).
2. Select TABLET, and then CONFIGURE.
3. Define tablet menu areas. Follow the prompts at the bottom of the AUTOCAD DRAWING EDITOR. Type the number of tablet menu areas you want (0-4) and press ENTER. If you do not want to use a menu template, type 0 (zero). Digitize the upper-left, lower-left, and lower-right corners of the menu area and then press ENTER. Next, enter the number of columns and press ENTER. Now enter the number of rows and press ENTER. Repeat for each menu area.
4. Define the fixed screen pointing area. By default, the entire tablet is a fixed screen pointing area. If you are using a menu template, you should re-specify the fixed screen pointing area to match the template. Continue to follow the prompts at the bottom of the AUTOCAD DRAWING EDITOR screen.
5. Define the floating screen pointing area—it allows you to access all areas of the screen. The floating screen pointing area takes precedence over TABLET MODE ON, the fixed screen pointing area, and the menu areas. Continue to follow the prompts at the bottom of the AUTOCAD DRAWING EDITOR screen.

Please check your AutoCAD documentation for additional information.



Contents

Index



APPENDICES

Page 137

Calibrating Intuos2 for AutoCAD in Windows

If you are using Intuos2 to digitize a drawing, you will need to calibrate Intuos2 with the paper drawing's coordinate system. The calibration allows you to digitize points from the paper drawing into the appropriate coordinate system of your drawing file.

1. From the DRAWING EDITOR, open the TOOLS menu (OPTIONS menu for Release 13).
2. Choose the TABLET and CALIBRATE options, then:
 - Digitize point #1 on the paper drawing. Then enter the xy coordinate from the paper drawing at the digitized point.
 - Digitize point #2 on the paper drawing. Then enter the xy coordinate from the paper drawing at the digitized point.
 - Digitize more points if necessary. More than four points may take more time than expected for AutoCAD to compute the best-fitting projective transformation.
3. Press ENTER when you are done.

When Intuos2 has been configured as a digitizer and calibrated, you can use CTRL+T to toggle between using Intuos2 as a digitizer and as a Windows system pointer.



Contents

Index



APPENDICES

Page 138

PRODUCT SPECIFICATIONS

GENERAL SPECIFICATIONS FOR ALL INTUOS2 TABLETS

Coordinate resolution	100 lpmm (2540 lpi)
Accuracy (pen)	+/- 0.25 mm (0.010 in)
Accuracy (Lens Cursor)	+/- 0.15 mm (0.006 in), +/- 0.25 mm (0.010 in) on Intuos2 4x5/A6, 6x8/A5, and 9x12/A4-regular tablets
Tilt	+/- 60 degrees, +/- 50 degrees for Intuos2 4x5/A6 tablets
Maximum reading height with pen	6 mm (0.24 in)
Maximum report rate	200 points per second
Communication interface	USB RS-232C Serial
Connector	USB A (USB tablets) 9-pin, D-sub, female (serial tablets)
Power requirements (USB tablets)	DC 5V, less than 140mA, from primary USB port or powered USB hub
(serial tablets)	DC 12V, 100mA
Power Adaptor(s) for serial tablets	AEC-3512B-W (120V, USA), AD-3923FM-W (230V, Continental Europe), AD-4230S-W (240V, Australia), AD-7442-W (240V, UK)
Operating temperature	5 to 40 degrees C (41 to 104 degrees F)
Storage temperature	-10 to +60 degrees C (14 to 140 degrees F)
Operating relative humidity	20% to 80% noncondensing
Storage relative humidity	20% to 90% noncondensing
Certification and compliance	FCC class B, VCCI class B, CE



Contents



Index



APPENDICES

Page 139

INTUOS2 4x5/A6 TABLET (MODELS XD-0405-U, XD-0405-R)

Active area (W x D)	127.0 x 106.0 mm (5.0 x 4.24 in)
Physical size (W x D x H)	225.0 x 210.0 x 7.5 mm (9.0 x 8.4 x 0.29 in)
Cable length	2.5 m (8.2 ft)
Weight	520 g (1.14 lb)
Power consumption	0.7 watts (USB), 1.2 watts (Serial)

INTUOS2 6x8/A5 TABLET (MODELS XD-0608-U, XD-0608-R)

Active area (W x D)	203.2 x 162.4 mm (8.13 x 6.45 in)
Physical size (W x D x H)	334.0 x 258.0 x 14.0 mm (13.36 x 10.32 x 0.56 in)
Cable length	2.5 m (8.2 ft)
Weight	900 g (1.98 lb)
Power consumption	0.7 watts (USB), 1.2 watts (Serial)

INTUOS2 9x12/A4-REGULAR TABLET (MODELS XD-0912-U, XD-0912-R)

Active area (W x D)	304.8 x 240.6 mm (12.19 x 9.62 in)
Physical size (W x D x H)	456.0 x 361.0 x 14.0 mm (17.97 x 14.22 x 0.56 in)
Cable length	2.5 m (8.2 ft)
Weight	1.6 kg (3.52 lb)
Power consumption	0.7 watts (USB), 1.2 watts (Serial)



Contents

Index



APPENDICES

Page 140

INTUOS2 12x12/A4-OVERSIZED TABLET (MODELS XD-1212-U, XD-1212-R)

Active area (W x D)	304.8 x 316.8 mm (12.19 x 12.67 in)
Physical size (W x D x H)	444.0 x 435.5 x 37.0 mm (17.76 x 17.42 x 1.48 in)
Cable length	2.5 m (8.2 ft)
Weight	2.1 kg (4.62 lb)
Power consumption	0.7 watts (USB), 1.2 watts (Serial)

INTUOS2 12x18/A3 TABLET (MODELS XD-1218-U, XD-1218-R)

Active area (W x D)	457.2 x 316.8 mm (18.28 x 12.67 in)
Physical size (W x D x H)	616.0 x 445.5 x 37.0 (24.64 x 17.82 x 1.48 in)
Cable length	2.5 m (8.2 ft)
Weight	3.0 kg (6.6 lb)
Power consumption	0.7 watts (USB), 1.2 watts (Serial)

INTUOS2 GRIP PEN (MODEL XP-501E)

Pen tip travel	0.1 mm (0.004 in) or less
Pressure levels	1024 levels
Eraser tip travel	1.5 mm (0.06 in), approximately
Physical size (L x D)	160 x 14.0 mm (6.28 x 0.55 in)
Weight	17 g (0.60 oz), approximately
Tip refill type	Polyacetal (Part No. PSI-A007)



Contents

Index



APPENDICES

Page 141

INTUOS2 AIRBRUSH (MODEL XP-400E)

Fingerwheel travel	10 mm (0.39 in)
Fingerwheel resolution	1024 levels
Pen tip travel	0.1 mm (0.004 in) or less
Pressure levels	1024 levels
Eraser tip travel	1.5 mm (0.06 in), approximately
Physical size (L x D)	162.5 x 32.6 mm (6.38 x 1.28 in)
Weight	24 g (0.85 oz), approximately
Tip refill type	Polyacetal (Part No. PSI-A007)

INTUOS2 CLASSIC PEN (MODEL XP-300E)

Pen tip travel	0.1 mm (0.004 in) or less
Pressure levels	1024 levels
Eraser tip travel	1.5 mm (0.06 in), approximately
Physical size (L x D)	151 x 12.2 mm (5.9 x 0.48 in)
Weight	13 g (0.46 oz), approximately
Tip refill type	Polyacetal (Part No. PSI-A007)

INTUOS2 INK PEN (MODEL XP-110)

Pen tip travel	0.1 mm (0.004 in) or less
Pressure levels	1024 levels
Physical size (L x D)	151 x 12.5 mm (5.94 x 0.49 in)
Weight	12 g (0.42 oz), approximately
Tip refill types	Polyacetal (Part No. PSI-A011) Ink refill, black (Part No. PSI-A023)



Contents



Index



APPENDICES

Page 142

INTUOS2 STROKE PEN (MODEL XP-120)

Pen tip travel	1.3 mm (0.05 in), approximately
Pressure levels	1024 levels
Physical size (L x D)	151 x 12.5 mm (5.94 x 0.49 in)
Weight	12 g (0.42 oz), approximately
Tip refill type	Polyacetal (Part No. PSI-A011)

INTUOS2 2D MOUSE (MODEL XC-100)

Physical size (L x D x H)	117.2 x 68.2 x 40.3 mm (4.61 x 2.69 x 1.59 in)
Weight	100 g (3.53 oz), approximately
Fingerwheel type	Continuous rotation, 24 clicks per turn

INTUOS2 4D MOUSE (MODEL XC-400)

Physical size (L x D x H)	120.0 x 71.0 x 35.4 mm (4.72 x 2.80 x 1.39 in)
Weight	105 g (3.7 oz), approximately
Button stroke	1 mm (0.04 in), approximately
Fingerwheel travel	+/- 8 mm (+/- 0.32 in), approximately
Fingerwheel resolution	+/- 1024 levels

INTUOS2 LENS CURSOR (MODEL XC-210)

Physical size (L x D x H)	159 x 66 x 33 mm (6.26 x 2.60 x 1.30 in)
Weight	75 g (2.65 oz), approximately
Button stroke	1 mm (0.04 in), approximately



Contents

Index



APPENDICES

Page 143

PARTS AND ACCESSORIES

Your Intuos2 Professional Graphics Tablet is the ultimate master tool for creative professionals. The tablet, combined with your Intuos2 Pen and a wide range of other available Intuos2 tools, enables you to paint more intuitively, illustrate better, and edit imagery faster than ever before. Each Intuos2 Pen and accessory features Tool ID, which means they always remember your preferences and work together seamlessly. To further expand the features of Intuos2, be sure to check out the accessories described on the following pages.

ORDERING PARTS AND ACCESSORIES

To purchase parts and accessories, see who to call for your region:

[USA, CANADA, CENTRAL AND SOUTH AMERICA](#)

[EUROPE, MIDDLE EAST AND AFRICA](#)

[JAPAN](#)

[ASIA PACIFIC \(ENGLISH\)](#)



Contents

Index



APPENDICES

Page 144

TABLETS

Description

Part Numbers

Intuos2 4x5/A6 Serial Tablet	XD-0405-R
Intuos2 4x5/A6 USB Tablet	XD-0405-U
Intuos2 6x8/A5 Serial Tablet	XD-0608-R
Intuos2 6x8/A5 USB Tablet	XD-0608-U
Intuos2 9x12/A4-regular Serial Tablet	XD-0912-R
Intuos2 9x12/A4-regular USB Tablet	XD-0912-U
Intuos2 12x12/A4-oversize Serial Tablet	XD-1212-R
Intuos2 12x12/A4-oversize USB Tablet	XD-1212-U
Intuos2 12x18/A3 Serial Tablet	XD-1218-R
Intuos2 12x18/A3 USB Tablet	XD-1218-U

TOOLS

Description

Part Numbers

Intuos2 Grip Pen	XP-501E
Intuos2 Airbrush	XP-400E
Intuos2 Classic Pen	XP-300E
Intuos2 Ink Pen	XP-110
Intuos2 Stroke Pen	XP-120
Intuos2 2D Mouse	XC-100
Intuos2 4D Mouse	XC-400
Intuos2 Lens Cursor	XC-210



Intuos2 Grip Pen This pressure-sensitive pen is an all-purpose tool for use in drawing, erasing, and typical mouse operations. The easy-to-use DuoSwitch gives you two programmable switch functions to simulate mouse actions or keyboard keys. The pressure-sensitive pen has an ergonomic, waisted and rubberized grip area, optimum weight and balance, and superior tip sensitivity, making it the most natural freehand tool.



Intuos2 Classic Pen This pressure-sensitive pen has the same feature set as the standard Intuos2 Pen, but with a slimmer profile that does not include a rubberized grip.



Intuos2 Ink Pen This pressure-sensitive drawing pen was created to provide immediate feedback on the drawing at your pen tip as well as on your computer screen. The pressure-sensitive pen comes with inking cartridges and two polyacetal tips for inkless drawing.





Intuos2 Stroke Pen This pressure-sensitive drawing pen was designed for the artist who requires a combination of visual and tactile feedback. The tip retracts slightly as the pen is pressed, giving it a feel similar to a soft felt pen.

Intuos2 Airbrush A true computer airbrush, the pressure-sensitive Intuos2 Airbrush incorporates a pressure-sensitive tip and eraser, tilt sensitivity, and a fingerwheel that provides an additional degree of control over the application of digital paint.

Intuos2 2D Mouse The cordless, batteryless 2D Mouse is an ideal tool for performing any task you may have done previously with a standard mouse. It includes an integrated middle button and rolling fingerwheel that can be programmed for a variety of actions, and that can also be used for up and down scrolling in the active window.

Intuos2 4D Mouse With simultaneous x/y/z axis manipulation and rotation, the capabilities of the 4D Mouse are unlike any other input device. Use the fingerwheel to smoothly pan and zoom at the same time. Orient a 3D object with pitch, yaw, and roll control. Smoothly shuttle through video or film with a nudge from your finger, or just use it as a supercharged mouse.

Intuos2 Lens Cursor The Lens Cursor is a precise coordinate position input tool. It is ideal for tracing and digitizing drawings, for CAD processes, or for other vector design applications where the precise input of coordinate information is critical. The moveable lens can be swung from left to right for comfortable positioning while you work.



Contents

Index



APPENDICES

Page 147

OTHER PARTS AND ACCESSORIES

<i>Description</i>	<i>Part Numbers</i>
Menu Strip (6x8/A5 tablet)	PSH-A224
(9x12/A4-regular and 12x12/A4-oversize tablets)	PSH-A225
(12x18/A3 tablet)	PSH-A226
Overlay Sheet (4x5/A6 tablet)	PSH-A219
(6x8/A5 tablet)	PSH-A220
(9x12/A4-regular tablet)	PSH-A221
(12x12/A4-oversize tablet)	PSH-A222
(12x18/A3 tablet)	PSH-A223
Pen Stand	PST-A026-01 (Grip Pen) PST-A021-02 (Other Pens)
Replacement Tips	
Tips for Pen (models XP-501E, XP-300E, and XP-501A) and Airbrush (model XP-400E)	PSI-A007
Tips for Ink Pen (model XP-110) and Stroke Pen (model XP-120)	PSI-A011
Refill (black) for Ink Pen (model XP-110)	PSI-A023
Incline Bar (6x8/A5 tablet)	PAS-A032
(9x12/A4-regular tablet)	PAS-A033

For order information, see [Ordering Parts and Accessories](#).



Contents



Index



APPENDICES

Page 148

LICENSE AND WARRANTIES

(WORLDWIDE, EXCEPT FOR EUROPE, AFRICA AND MIDDLE EAST)

SOFTWARE LICENSE

This legal document is an agreement between you, the end-user, and Wacom Technology Corporation (Wacom).

1. Grant of License. The enclosed product includes computer programs embedded in firmware and accompanying diskette or CD-ROM (the "Software"). The Software is licensed, not sold, to you for use only with Wacom products upon the terms of this license, and Wacom reserves any rights not expressly granted to you. Wacom grants to you a non-exclusive right to use this copy of the Software in conjunction with a Wacom product at a single location.

2. Ownership of Software. Although you may own the product in which the Software is originally recorded, Wacom retains ownership of the Software itself. You acknowledge that the Software is Wacom's property, and contains valuable confidential, unpublished information developed or acquired by Wacom at great expense, including data processing algorithms, innovations and concepts. The Software is protected by copyright and other federal and state laws. You agree to use your reasonable best efforts to protect the Software from unauthorized reproduction, distribution, disclosure, use, or publication.

3. Copy Restrictions. Unauthorized copying of the Software is expressly forbidden.

4. Use Restrictions. You may not decompile, reverse assemble, disassemble or reverse engineer the Software.

5. Termination. This License is effective until terminated. This License will terminate automatically without notice from Wacom if you fail to comply with any provisions of the License.

6. Miscellaneous. This License is governed by the laws of the United States of America and the state of Washington except in Asia Pacific and by the laws of Japan for Asia Pacific.



Contents

Index



APPENDICES

Page 149

LIMITED WARRANTY

Wacom warrants the product, except for the Software, to be free from defects in materials and workmanship under normal use and service as long as the product remains in production and in possession of the original owner, but not less than one (1) year, as long as you own the product as evidenced by a copy of the receipt and a registration card that has been returned to Wacom within 30 days of purchase.

The Software is licensed “as is.” Wacom makes no warranty with respect to its quality or performance. Wacom cannot guarantee you uninterrupted service or the correction of any errors.

Upon discovery of a defect in the product, except in the Software, within the Warranty Period, you should contact Wacom Technical Support via telephone to obtain an RMA (Return Merchandise Authorization) number and instructions for shipping the product to a service location designated by Wacom. You should send the product, shipping charges prepaid, to the designated service location, accompanied by the return authorization number, your name, address and telephone number, proof of purchase date, and a description of the defect. Wacom will pay for return shipping by United Parcel Service or by an equivalent service as chosen by Wacom.

Wacom’s sole obligation and entire liability under this warranty shall be, at Wacom’s option, either the repair or replacement of the defective product or parts thereof of which Wacom is notified during the Warranty Period; provided, however, that you are responsible for (i) the cost of transportation of the product to the designated service location and (ii) any loss or damage to the product resulting from such transportation.

Wacom shall have no responsibility to repair or replace the product if the failure of the product has resulted from accident, abuse, misuse, negligence, or unauthorized modification or repair, or if it has been handled or stored other than in accordance with Wacom’s storage instructions.

Any descriptions, drawings, specifications, samples, models, bulletins, or similar material, used in connection with the sale of the product, shall not be construed as an express warranty that the product will conform or comply with your requirements.



Contents

Index



APPENDICES

Page 150

EXCEPT FOR THE LIMITED WARRANTY DESCRIBED ABOVE, THERE ARE NO OTHER WARRANTIES MADE BY WACOM ON THIS PRODUCT. NO ORAL OR WRITTEN INFORMATION OR ADVICE GIVEN BY WACOM, ITS DEALERS, DISTRIBUTORS, AGENTS, OR EMPLOYEES SHALL CREATE A WARRANTY OR IN ANY WAY INCREASE THE SCOPE OF THIS WARRANTY, AND YOU MAY NOT RELY ON ANY SUCH INFORMATION OR ADVICE. THIS WARRANTY GIVES YOU SPECIFIC LEGAL RIGHTS, WHICH VARY FROM STATE TO STATE.

WACOM LIMITS THE DURATION OF ANY LEGALLY IMPLIED WARRANTIES INCLUDING IMPLIED WARRANTIES OF MERCHANTABILITY OR FITNESS FOR A PARTICULAR PURPOSE, TO THE DURATION OF WACOM'S EXPRESS WARRANTY. SOME STATES DO NOT ALLOW LIMITATIONS ON HOW LONG AN IMPLIED WARRANTY LASTS. SO THE ABOVE LIMITATION MAY NOT APPLY TO YOU.

NEITHER WACOM NOR ANYONE ELSE WHO HAS BEEN INVOLVED IN THE CREATION, PRODUCTION, OR DELIVERY OF THIS PRODUCT SHALL BE LIABLE FOR ANY DIRECT, CONSEQUENTIAL, OR INCIDENTAL DAMAGES (INCLUDING DAMAGES FOR LOSS OF BUSINESS PROFITS, BUSINESS INTERRUPTION, LOSS OF BUSINESS INFORMATION AND THE LIKE) ARISING OUT OF THE USE OF OR INABILITY TO USE SUCH PRODUCT, EVEN IF WACOM HAS BEEN ADVISED OF THE POSSIBILITY OF SUCH DAMAGES. BECAUSE SOME STATES DO NOT ALLOW THE EXCLUSION OR LIMITATION OF LIABILITY FOR CONSEQUENTIAL DAMAGES, THE ABOVE LIMITATION MAY NOT APPLY TO YOU.

In the event that any of the above limitations are held unenforceable, Wacom's liability for any damages to you or any party shall not exceed the purchase price you paid, regardless of the form of any claim.

This Limited Warranty is governed by the laws of the United States of America and the state of Washington.

This Limited Warranty is valid for and only applies to products purchased and used inside the United States (and its territories or possessions) and Canada.



Contents

Index



APPENDICES

Page 151

WARRANTY ON SALES OUTSIDE OF U.S. AND CANADA

(EXCEPT EUROPE, AFRICA AND MIDDLE EAST)

For products purchased or used outside of the United States and Canada, the warranty is one (1) year from the date of purchase, and upon discovery of a defect in the product, except in the Software, within the Warranty Period you should notify your local dealer or distributor. In all other respects the terms of the warranty as set forth above apply to such sales.

Should you have any questions about this Agreement, or if you desire to contact Wacom for any reason, please contact in writing:

In North and South America contact:

Wacom Technology Corporation
1311 S.E. Cardinal Court
Vancouver, Washington 98683
U.S.A.

In Asia and Asia Pacific contact:

WACOM Co., Ltd.
2-510-1 Toyonodai
Otone-Machi, Kitasaitama-Gun
Saitama, 349-1148
Japan



Contents



Index



APPENDICES

Page 152

LICENSE AND WARRANTIES (EUROPE)

(EUROPE, AFRICA AND MIDDLE EAST)

SOFTWARE LICENSE AGREEMENT

Important Notice to Customers

This product contains copyrighted computer programs ("software") which are the inalienable intellectual property of WACOM Europe GmbH ("WACOM"). This software is both integrated within the product and also contained on the accompanying data carrier. The purchase of this product from your dealer does not include WACOM's software and the associated rights of usage. WACOM grants you, the user, the right to use the software solely in accordance with the conditions of this software license agreement. By purchasing this product you agree to the terms of this license.

Entitlement to Use the Software

WACOM grants the customer a personal, non-exclusive license to use the software solely in combination with this product and for the proper operation of this product. This license may be transferred only in connection with this product.

The use of this software includes solely the permanent or temporary, complete or partial copying of the software by means of loading, displaying, executing, transmitting or saving for the purpose of executing the commands and data it contains or of observing, examining or testing the functions of the software.

The customer may not license, lease or loan the software to a third party, nor allow a third party to access the software in any other way. The customer may not without prior written authorization from WACOM copy, modify, transmit or edit the software, apart from the actions of copying necessary to create a backup copy and for the purposes outlined in section 2 above. The customer may not decompile the software; if the software contains interfaces to software which is not supplied by WACOM, WACOM shall make the necessary information available to the customer upon request, provided that the customer can prove his/her entitlement to use the software and that he/she agrees to pay the copying and postage costs.



Contents



Index



APPENDICES

Page 153

LIMITED WARRANTY AND LIABILITY

WACOM warrants to you as the original end-user that the product hardware is free from defects in materials and workmanship under normal use and service for a period of TWO (2) YEARS after the date of purchase, provided that they are unused at the time of such purchase. WACOM further warrants to you the accompanying diskettes against defects in materials and workmanship for a period of SIX (6) MONTHS after the date of purchase.

The Software is licensed and distributed "AS IS". WACOM makes no warranties, expressed or implied, with respect to its quality, performance, merchantability and fitness for a particular purpose (including related manuals and documentation). WACOM cannot guarantee you uninterrupted service or the correction of any errors.

Upon discovery of a defect in the product, except in the Software, within the applicable Warranty Period, you should return them in the original packaging to the place of your original purchase, together with your name, address, telephone number, a description of the problem and a copy of the original invoice. You are responsible for any loss or damage to the product resulting from such transportation. WACOM's sole obligation and entire liability under this warranty shall be, at WACOM's option, either the repair or the replacement of product or parts thereof that prove defective and that were returned within the applicable Warranty Period.

WACOM shall have no responsibility to repair or replace the product if (a), in the opinion of WACOM, the failure of the product has resulted from accident, abuse, misuse, negligence, misapplication, or unauthorized modification or repair, or (b) the product has been handled or stored other than in accordance with WACOM's storage instructions, or (c) the failure is due to normal wear and tear, or (d) you fail to fulfill your obligations as described above. In case that any claim presented under warranty is found upon investigation to be either outside the duration or the scope of this warranty, or in case that the product is found to be not defective, then the cost of such investigation and repair shall be borne by you.

Any descriptions, drawings, specifications, samples, models, bulletins, or similar material, used in connection with the sale of the product, shall not be construed as an express warranty that the product will conform or comply with your requirements.



Contents

Index



APPENDICES

Page 154

LIABILITY OF WACOM

WACOM and its employees or representatives shall not be liable for any damages, on any legal grounds, unless these damages (a) may be attributed to intent or to gross negligence or (b) result from the culpable infringement of an essential contractual obligation (cardinal obligation) in a way which may endanger the achievement of the contractual purpose or (c) result from the absence of a guaranteed feature or (d) are covered by product liability law. If WACOM is liable for the culpable infringement of cardinal obligations, in the absence of intent or gross negligence, WACOM's total liability shall be limited to those damages and to that range of damages of which the occurrence could typically have been foreseen by WACOM under the circumstances known to it at the time the agreement was concluded.

In the event that any of the above limitations are held unenforceable, WACOM's aggregate liability for any damages to you or any party shall not exceed the purchase price of the defective, damaged or undelivered product as determined by the net invoiced price, regardless of the form of any claim. Claims must be reported to WACOM in writing within no more than (1) month after the damage occurred. Upon failure to do so, any claims to the payment of damages will be void. Reseller indemnifies WACOM from any claims by third parties for damages resulting from or connected to resellers fault.

The rights and limitations set forth in this statement do not limit or exclude certain statutory rights that may be applicable in the country of your purchase. If any of the provisions of this statement are declared void, such provisions shall be considered separate from this statement and the statement shall otherwise remain in full force and effect.

This Limited Warranty and Liability is governed by the laws of the Federal Republic of Germany.

Should you have any questions about this Agreement, or if you desire to contact WACOM for any reason, please contact in writing:

WACOM Europe GmbH
Europark Fichtenhain A9
47807 Krefeld
GERMANY



[Contents](#)

[Index](#)



APPENDICES

Page 155

GLOSSARY

Active area. The drawing area of the tablet where your Intuos2 tools are detected.

Application-specific settings. Intuos2 tool and tablet settings that have been customized for individual applications. The control panel enables you to program a tool to behave uniquely in different applications. Your application-specific settings are in effect whenever you use the application.

Aspect. The ratio between the vertical and horizontal dimension of the tablet or display. The ASPECT setting is located on the MAPPING/SPEED tab, and defines how the tablet area is mapped to the display area. This setting determines if the aspect of the tablet and display are the same.

Click force. The amount of force you must apply to your Intuos2 Pen or Airbrush tip for a click to occur.

DOS shell. A DOS session that is running under the Windows operating system.

Double-click assist. A control panel option that makes it easier to double-click. When selected, you can customize the double-click speed and distance.

Double-click distance. The maximum distance (in screen pixels) that the cursor can move between clicks and still be accepted as a double-click. Increasing the double-click distance makes double-clicking easier, but may cause a delay in brush strokes in some graphics applications.



Contents



Index

Double-click speed. The maximum time that can pass between clicks and still be accepted as a double-click. Increasing the double-click time makes double-clicking easier.

Eraser-aware application. A software application that has built-in support for the Intuos2 eraser. These applications take advantage of the eraser in different ways, depending on what makes sense for the application.

Fingerwheel. The control wheel on the Intuos2 Airbrush, 2D Mouse and 4D Mouse.

Landscape. A tablet ORIENTATION setting. In landscape orientation, the tablet buttons are at the top. Rectangular tablets will be in a horizontal position. See also [portrait](#).

Lens Cursor. An input device with programmable buttons and cross-hair for entering precise coordinate position information.

Mapping. The relationship between your Intuos2 tool position on the tablet and the cursor position on the monitor screen.

Modifier. Modifier keys include SHIFT, ALT, and CTRL. You can customize your Intuos2 tool to simulate a modifier key.

Mouse Mode. A method for positioning the screen cursor. When you place an Intuos2 tool on the tablet, you can navigate the screen cursor like a mouse. This is known as relative positioning. See also [Pen Mode](#).



Contents



Index



GLOSSARY

Page 157

Nib. The replaceable tip of the Intuos2 Pen or Airbrush.

Pen Mode. A method of positioning the screen cursor. Wherever you place your Intuos2 tool on the tablet, the screen cursor will be at that same corresponding point on the screen. This is known as absolute positioning, and allows you to position the screen cursor without having to first find it and then move it with a “pick up and roll” action. See also [Mouse Mode](#).

Pixel. The smallest unit of measure on your monitor screen.

Pop-up Menu. A window that displays a list of keystroke functions and mapping options. You can customize your Wacom pen or mouse tool buttons or tablet buttons to display this menu.

Portrait. A tablet ORIENTATION setting. In portrait orientation, the tablet buttons are on the side. Rectangular tablets will be in a vertical position. See also [landscape](#).


Pressure sensitive. A quality of the Intuos2 Pen and Airbrush tip and eraser that senses the amount of pressure being applied. This is used to create natural-looking pen, brush, and eraser strokes in applications that are pressure-sensitive.

Pressure-sensitive application. Any application that supports pressure-sensitive input.

Proximity. The height (6 mm (0.24 inch)) above the tablet’s [active area](#) where the Intuos2 tools are detected.

QuickPoint. The QUICKPOINT MODE divides the tablet into two independent areas: a large area for drawing and a small area for quick navigation.



 [Contents](#)
 [Index](#)



GLOSSARY
Page 158

Screen cursor. The pointer on the display screen. Screen cursors come in different shapes (such as an I-beam, arrow, or box), depending on which application you are running.

Tilt sensitive. A quality of the Intuos2 Pen and Airbrush tip and eraser that senses the amount of tilt between the tool and tablet. This is used to create natural-looking pen, brush, and eraser strokes in applications that are tilt-sensitive.

Tool ID. A feature that makes each Intuos2 tool unique. If you are working with two identical pens, the tablet will recognize each one as a separate tool. This is particularly useful if you have customized each pen differently.

Tracking speed. A setting that allows you to adjust the speed at which your screen cursor moves when your Intuos2 tool is in [Mouse Mode](#).

USB. Universal Serial Bus. A hardware interface standard for connecting computer peripheral devices. USB ports support hot-plugging, which allows you to connect or disconnect a USB device without turning off your computer.

Wintab. An interface standard used by Windows applications for receiving tablet information. Intuos2 supports all Wintab-compatible applications under Windows.



Contents

Index



GLOSSARY

Page 159

INDEX

2D Mouse			
tabs, customizing	53	Airbrush	36
testing	119	holding	63
using	37	settings, customizing	53
fingerwheel	39	tabs, customizing	117
4D Mouse		testing	35
buttons, customizing	69	using	91
programming	70	Application-specific settings	89
tabs, customizing	53	creating	76
testing	120	working with	91
using	38	Aspect	89
as a Button Box	70	AutoCAD	76
fingerwheel	39	calibrating for Intuos2	138
About the manual	8	configuring for Intuos2	135
Accessories and parts	144	configuring screen pointing areas	136
ordering	144	configuring tablet menus	136
other	148	working with	135
tablets	145	Button Box, creating	70
tools	145	Button functions	58
Add menu	98	Care, for tools and tablet	41
Adding a new tool	87	Checklist, pre-contact	127
Advanced		Click force adjustment	102
eraser pressure, customizing	105	Clicking, with pen	27
mapping	108	Connection, checking tablet	96
tip pressure, customizing	101		



Contents

Index

Control panel		tilt sensitivity	65
buttons	52	tip feel	55
features	47	tool buttons	57
lists	50	tools	53
opening	46	Diagnostics	117
tabs	48	Display area	80
Copying settings	106	Double-click, customizing	56
Customizing		Double-clicking, how to	27
2D Mouse		Drawing	
fingerwheel	68	with pressure	31
tabs	53	with tilt	32
4D Mouse		DualTrack, using	107
buttons	69	DuoSwitch, removing	
fingerwheel	71	from Designer Pen	43
tabs	53	from Grip Pen	43
advanced		Edit menu	97
eraser pressure	105	Environmental conditions	41
tip pressure	101	Eraser feel, customizing	64
airbrush settings	63	Erasing, with pen	33
click force	102	Eye-hand coordination exercise	34
double-click	56	Features	13
eraser feel	64	12x12/A4-oversize tablet	15
Lens Cursor		12x18/A3 tablet	15
buttons	69	4x5/A6 tablet	13
pen and airbrush tabs	53	6x8/A5 tablet	14
Pop-up Menu	81	9x12/A4-regular tablet	14
pressure curve	103	control panel	47
tablet buttons	84	Intuos2 tools	16
tablet to screen mapping	72		



File menu	97	File	97
Fingerwheel		Help	99
customizing for 2D Mouse	68	Language	99
customizing for 4D Mouse	71	Remove	98
using	39	Mode, checking tablet	95
Functions, button	58	Mouse Speed, setting from Pop-up Menu	82
General problems, troubleshooting	123	Multiple tablets, installing	134
Help menu	99	New tool, adding	87
Holding		Nib, replacing	42
the airbrush	36	Ordering parts and accessories	144
the pen	25	Orientation	75
Information, product	133	Parts and accessories	144
Installing multiple tablets	134	ordering	144
Interference, radio and television	3	other	148
Keystrokes, adding to Pop-up Menu	82	tablets	145
Language menu	99	tools	145
Lens Cursor		Pen	
buttons, customizing	69	clicking	27
programming	70	clicking with	27
testing	120	double-clicking with	27
using	40	drawing	
using as a Button Box	70	with pressure	31
License and Warranties	149	with tilt	32
License and Warranties (Europe)	153	erasing with	33
Manual, about	8	holding	25
Mapping		pointing	26
advanced	108	replacing the tip	42
options, adding to Pop-up Menu	83	tabs, customizing	53
Menus	97	testing	117
Add	98	using	25
Edit	97		



Index

Pointing, with pen	26	Specifications, product	139
Pop-up Menu, customizing	81	12x12/A4-oversize tablet	141
Positioning mode	74	12x18/A3 tablet	141
Pressure		2D Mouse	143
curve adjustment	103	4D Mouse	143
drawing with	31	4x5/A6 tablet	140
Product information	133	6x8/A5 tablet	140
Programming		9x12/A4-regular tablet	140
4D Mouse	70	Airbrush	142
Lens Cursor	70	Classic Pen	142
Proximity	30	general	139
QuickPoint Mode	79	Grip Pen	141
Radio and television interference	3	Ink Pen	142
Registration, mailing	133	Lens Cursor	143
Remove menu	98	Stroke Pen	143
Removing		Tablet	
keystrokes from Pop-up Menu	83	area	77
mapping options from Pop-up Menu	83	buttons, customizing	84
settings	94	connection, checking	96
Serial tablets		mode, checking	95
testing	116	storing	41
troubleshooting	122	working with	20
Settings		Tablet to screen mapping, customizing	72
changing for specific application and tool	94	Technical Support	
copying	106	contacting	127
removing	94	linking to web page	127
Software		numbers	
driver, downloading the latest	128	for Africa	130
uninstalling	133	for Asia Pacific	131



for Canada	129	Troubleshooting	114
for Central America	129	general problems	123
for Europe	130	serial tablet problems	122
for Japan	131	serial tablets	116
for Middle East	130	USB	
for South America	129	tablet problems	121
for USA	129	tablets	114
pre-contact checklist	127	verifying readiness	115
who to call	128	Windows-specific problems	126
Testing		Uninstalling software	133
2D Mouse	119	USB	
4D Mouse	120	readiness, testing	115
airbrush	117	tablet problems, troubleshooting	121
Lens Cursor	120	tablets, testing	114
pen	117	Using more than one tool	88
tools	117	WACOM International Offices	165
Tilt		Warranties and License	149
drawing with	32	Warranties and License (Europe)	153
sensitivity, customizing	65	Web page, linking to	127
Tip		Windows-specific problems, troubleshooting	126
customizing feel	55	Work area, setting up	19
replacing	42		
Tool buttons, customizing	57		
Tool List, adding tools to	93		
Tools			
adding to Tool List	93		
customizing	53		
testing	117		
using more than one	88		



WACOM INTERNATIONAL OFFICES

WACOM Technology Corporation

1311 S.E. Cardinal Court

Vancouver, WA 98683

U.S.A.

Telephone

General: ++1-360-896-9833

Fax: ++1-360-896-9724

WACOM Europe GmbH

Europark Fichtenhain A9

47807 Krefeld

Germany

Telephone

General: ++49-(0)2151-3614-0

Fax: ++49-(0)2151-3614-111

WACOM Co., Ltd.

2-510-1 Toyonodai

Otone-Machi, Kitasaitama-Gun

Saitama, 349-1148

Japan

Telephone

General: ++81-(0)480-78-1213

Fax: ++81-(0)480-78-1217



Contents

Index