

ORIGINAL INSTRUCTION MANUAL



McGregor 18V CORDLESS BLOWER

4668321 (Model: MCLB18)

VI: 10/24

CAUTION Read the instructions before using the machine

These instructions contain important information that will help you get the best from your blower, ensuring it is assembled correctly and safely. If you need help or have damaged or missing parts, call the Customer Helpline on **0345 605 2062**

AFTER SALES SUPPORT
0345 605 2062
SAN NO.: 03218ABBBO11

Contents

Safety information	2
Parts list	20
Assembly	21
Preparation.....	22
Operation.....	26
Maintenance	28
Technical data	29
Trouble shooting	30
Recycling and Disposal.....	31
Getting Help.....	31
Guarantee	32

Produced in China for Argos Limited, London, EC1N 2HT, UK.

Argos (N.I.) Ltd, Forestside Shopping Centre, Upper Galwally, Belfast, BT8 6FX, UK.

<https://bit.ly/Coreservice-McGregor>



Safety Information

Important - Please read these instructions fully before operating or maintaining

Warning symbols

Some of the following symbols may be used on this product. Please study them and learn their meaning. Proper interpretation of these symbols will allow you to operate the product better and safer.



Wear ear and eye protection when using the product



Read operator's manual



WARNING –Do not expose to rain



Do not open or remove safety shields while engine is running



Severing of fingers or hand-impeller blade



Keep bystanders away



WARNING-Disconnect battery before maintenance



Safety Information

Important - Please read these instructions fully before operating or maintaining

Warning symbols



The product complies with the applicable European directives and an evaluation method of conformity for these directives was done.



Conforms to relevant UK regulatory requirements.



WEEE symbol. Waste electrical products should not be disposed of with household waste. Please recycle where facilities exist. Check with your local authority or local store for recycling guidelines



Guaranteed sound power level

Warning symbols on battery pack



Do not throw into water.



Do not throw on fire.



Do not subject the battery to strong sunlight over long periods of time. Do not leave on a heater (max.45°C).



Batteries contain Li-ion. Do not dispose of waste batteries in domestic waste. Contact local authority to find out how to dispose of batteries.



Safety Information

Important - Please read these instructions fully before operating or maintaining

Warning symbols on charger



The charger is for indoor use only.



Double isolation. (Only for charger)



Protective 3.15A limited with B0Q-SP06-20ZB.



Read the instruction manual



Pole orientation.



WEEE symbol. Waste electrical products should not be disposed of with household waste. Please recycle where facilities exist. Check with your local authority or local store for recycling guidelines.



Safety Information

Important - Please read these instructions fully before operating or maintaining

General safety warnings

WARNING! Read all safety warnings and all instructions provided on or with this machine.

Failure to follow the warnings and instructions may result in electric shock, fire and/or serious injury.

The term machine in the warnings refers to your mains-operated (corded) machine or battery-operated (cordless) machine.

Save all warnings and instructions for future reference.

- This product is not intended for use by persons (including children) with reduced physical, sensory or mental capabilities, or lack of experience and knowledge, unless they have been given supervision or instruction concerning use of the product by a person responsible for their safety.
- Children should be supervised to ensure that they do not play with the product.
- The garden power tool must be kept out of reach of children.



Safety Information

Important - Please read these instructions fully before operating or maintaining

Work area safety

- Keep work area clean and well lit. Cluttered or dark areas invite accidents.
- Do not operate power tools in explosive atmospheres, such as in the presence of flammable liquids, gases or dust. Power tools create sparks which may ignite the dust or fumes.
- Keep children and bystanders away while operating a power tool. Distractions can cause you to lose control.

Electrical safety

- Power tool plugs must match the socket. Never modify the plug in any way. Do not use any adaptor plugs with earthed (grounded) power tools. Unmodified plugs and matching sockets will reduce the risk of electric shock.
- Avoid body contact with earthed or grounded surfaces, such as pipes, radiators, ranges and refrigerators. There is an increased risk of electric shock if your body is earthed or grounded.
- Do not expose power tools to rain or wet conditions. Water entering a power tool will increase the risk of electric shock.
- Do not abuse the cord. Never use the cord for carrying, pulling or unplugging the power tool. Keep the cord away from heat, oil, sharp edges



Safety Information

Important - Please read these instructions fully before operating or maintaining

Electrical safety

or moving parts. Damaged or entangled cords increase the risk of electric shock.

- When operating a power tool outdoors, use an extension cord suitable for outdoor use. Use of a cord suitable for outdoor use reduces the risk of electric shock.
- If operating a power tool in a damp location is unavoidable, use a residual current device (RCD with a tripping current of 30mA or less) protected supply. Use of an RCD reduces the risk of electric shock.

Personal safety

- Stay alert, watch what you are doing and use common sense when operating a power tool. Do not use a power tool while you are tired or under the influence of drugs, alcohol or medication. A moment of inattention while operating power tools may result in serious personal injury.
- Use Personal Protective Equipment(PPE). Always wear eye protection. Protective equipment, such as a dust mask, non-skid safety shoes, hard hat, or hearing protection used for appropriate conditions will reduce personal injuries.
- Prevent unintentional starting. Ensure the switch is in the off-position before connecting to the



Safety Information

Important - Please read these instructions fully before operating or maintaining

Personal safety

power source and/or battery pack, picking up or carrying the tool.

Carrying power tools with your finger on the switch or energising power tools that have the switch on invites accidents.

- Remove any adjusting key or wrench before turning the power tool on.

A wrench or a key left attached to a rotating part of the power tool may result in personal injury.

- Do not overreach. Keep proper footing and balance at all times. This enables better control of the power tool in unexpected situations.
- Dress properly. Do not wear loose clothing or jewellery. Keep your hair, clothing and gloves away from moving parts. Loose clothes, jewellery or long hair can be caught in moving parts.

Machine use and care

- Do not force the machine. Use the correct machine for your application. The correct machine will do the job better and safer at the rate for which it was designed.
- Do not use the machine if the switch does not turn it on and off. Any machine that cannot be controlled with the switch is dangerous and must be repaired.



Safety Information

Important - Please read these instructions fully before operating or maintaining

Machine use and care

- Disconnect the plug from the power source and/or the battery pack from the machine before making any adjustments, changing accessories, or storing machines. Such preventive safety measures reduce the risk of starting the machine accidentally.
- Store idle machines out of the reach of children and do not allow persons unfamiliar with the machine or these instructions to operate the machine. machines are dangerous in the hands of untrained users.
- Maintain machines. Check for misalignment or binding of moving parts, breakage of parts and any other condition that may affect the machine's operation. If damaged, have the machine repaired before use. Many accidents are caused by poorly maintained machines.
- Keep cutting tools sharp and clean. Properly maintained cutting tools with sharp cutting edges are less likely to bind and are easier to control. Use the machine, accessories and tool bits etc. in accordance with these instructions, taking into account the working conditions and the work to be performed. Use of the machine for operations different from those intended could result in a hazardous situation.



Safety Information

Important - Please read these instructions fully before operating or maintaining

Battery machine use and care

- Recharge only with the charger specified by the manufacturer. A charger that is suitable for one type of battery pack may create a risk of fire when used with another battery pack.
- Use power tools only with specifically designated battery packs. Use of any other battery packs may create a risk of injury and fire.
- When battery pack is not in use, keep it away from other metal objects, like paper clips, coins, keys, nails, screws or other small metal objects, that can make a connection from one terminal to another. Shorting the battery terminals together may cause burns or a fire.
- Under abusive conditions, liquid may be ejected from the battery; avoid contact. If contact accidentally occurs, flush with water. If liquid contacts eyes, additionally seek medical help. Liquid ejected from the battery may cause irritation or burns.
- Do not use a battery pack or tool that is damaged or modified. Damaged or modified batteries may exhibit unpredictable behaviour resulting in fire, explosion or risk of injury.
- Do not expose a battery pack or tool to fire or excessive temperature. Exposure to fire or temperature above 130°C may cause explosion.



Safety Information

Important - Please read these instructions fully before operating or maintaining

Battery machine use and care

- Follow all charging instructions and do not charge the battery pack or tool outside the temperature range specified in the instructions. Charging improperly or at temperatures outside the specified range may damage the battery and increase the risk of fire.

Vibration and noise reduction

To reduce the impact of noise and vibration emission, limit the time of operation, use low-vibration and low-noise operating modes as well as wear personal protective equipment.

Take the following points into account to minimize the vibration and noise exposure risks:

- Only use the product as intended by its design and these instructions.
- Ensure that the product is in good condition and well maintained.
- Use correct cutting device for the product and ensure they in good condition.
- Keep tight grip on the handles/gripping surface.
- Maintain this product in accordance with these instructions and keep it well lubricated (where appropriate).

Plan your work schedule to spread any high vibration tool use across a longer period of time.



Safety Information

Important - Please read these instructions fully before operating or maintaining

Emergency

Familiarise yourself with the use of this product by means of this instruction manual. Memorise the safety directions and follow them to the letter. This will help to prevent risks and hazards.

- Always be alert when using this product, so that you can recognise and handle risks early. Fast intervention can prevent serious injury and damage to property.
- Switch off and disconnect from the power supply if there is any malfunction. Have the product checked by a qualified specialist and repaired, if necessary, before you put it into operation again.

Residual risks

Even if you are operating this product in accordance with all the safety requirements, potential risks of injury and damage remain. The following dangers can arise in connection with the structure and design of this product:

- Health defects resulting from vibration emission if the product is being used over long periods of time or not adequately managed and properly maintained.
- Injuries and damage to property due to broken application tools or the sudden impact of hidden objects during use.



Safety Information

Important - Please read these instructions fully before operating or maintaining

Residual risks

- Danger of injury and property damage caused by flying objects.



WARNING!

This product produces an electromagnetic field during operation! This field may under some circumstances interfere with active or passive medical implants! To reduce the risk of serious or fatal injury, we recommend persons with medical implants to consult their doctor and the medical implant manufacturer before operating this product!

Safety warnings for vacuum blower

Training

- Read the instructions carefully. Be familiar with the controls and the proper use of the product.
- Never allow children, persons with reduced physical, sensory or mental capabilities or lack of experience and knowledge or people unfamiliar with these instructions to use the product. Local regulations may restrict the age of the operator.
- Keep in mind that the operator or user is responsible for accidents or hazards occurring to other people or their property.



Safety Information

Important - Please read these instructions fully before operating or maintaining

Safety warnings for vacuum blower

Preparation

- Obtain ear protection and safety glasses. Wear them at all times while operating the product.
- While operating the product, always wear substantial footwear and long trousers. Do not operate the product when barefoot or that has hanging cords or ties.
- To prevent dust irritation the wearing of a face mask is recommended.
- Do not wear loose clothing or jewellery that can be drawn into the air inlet. Keep long hair away from the air inlets.
- Operate the product in a recommended position and only on a firm level surface.
- Do not operate the product on a paved or gravel surface where ejected material could cause injury.
- Before using, always visually inspect to see, that the bolts and other fasteners are secure, the housing is undamaged and that guards and screens are in place. Replace worn or damaged components in sets to preserve balance. Replace damaged or unreadable labels.
- Never operate the product while people, especially children, or pets are nearby.
- **CAUTION!** Do not touch a rotating impeller fan.



Safety Information

Important - Please read these instructions fully before operating or maintaining

Safety warnings for vacuum blower

Operation

- Do not allow hands or any other part of the body or clothing inside the blower tube, or near any moving part.
- Keep proper balance and footing at all times. Do not overreach.
- Always stand clear of the discharge zone when operating this product.
- Do not allow processed material to build up in the discharge zone; this may prevent proper discharge and can result in kickback of material through the intake opening.
- If the product becomes clogged, shut-off the power source and disconnect the battery pack from machine before cleaning debris.
- Never operate the product with defective guards or shields, or without safety devices, for example debris collector in place, or if the cord is damaged or worn.
- Do not transport this product while the power source is running.
- Stop the product and remove the battery pack . Make sure that all moving parts have come to a complete stop
 - whenever you leave the product,
 - before clearing blockages or unclogging chute,



Safety Information

Important - Please read these instructions fully before operating or maintaining

Safety warnings for vacuum blower

- before checking, cleaning or working on the product,
- after striking a foreign object to inspect the product for damage,
- if the product starts to vibrate abnormally, for immediately check.
- Operate the product only in daylight or in good artificial light.
- Always be sure of your footing on slopes.
- Always be sure of the footing on slopes and walk, never run.
- Keep all cooling air inlets clear of debris.
- Never blow debris in the direction of bystanders.

Recommendations for operation

- Operate the product only at reasonable hours – not early in the morning or late at night when people might be disturbed.
- Use rakes and brooms to loosen debris before blowing.
- Slightly dampen surfaces in dust conditions or use mister attachment.
- Use the full blower nozzle extension so the air stream can work close to the ground.
- Avoid using the machine in bad weather conditions especially when there is a risk of lightning.



Safety Information

Important - Please read these instructions fully before operating or maintaining

Safety warnings for battery packs

- Keep the battery pack clean and dry. Wipe the battery pack terminals with a clean, dry cloth if they become dirty.
- Do not subject the battery pack to mechanical shock.
- Do not expose the battery pack to heat or fire. Avoid storing in direct sunlight.
- Do not keep the battery pack on charge when it is not in use.
- Remove the battery from the equipment when it is not in use.
- Keep the battery pack out of the reach of children.
- In the event of battery leakage, do not allow the liquid to come into contact with the skin or eyes. If contact has been made, wash the affected area with copious amounts of water and seek medical advice.
- The battery pack needs to be charged before use. Always refer to this instruction manual and use the correct charging procedure.
- After extended periods of storage, it may be necessary to charge and discharge the battery pack several times to obtain maximum performance.
- The battery pack gives its best performance when it is operated at normal room temperature ($20^{\circ}\text{C} \pm 5^{\circ}\text{C}$).



Safety Information

Important - Please read these instructions fully before operating or maintaining

Safety warnings for battery packs

- When discharging several battery packs, keep battery packs of different electrochemical systems separate from each other.
- Retain the original product literature for future reference.
- Do not dismantle, open or shred cells or battery packs.
- Dispose of safely in an environmentally-friendly manner. Not with domestic, household waste.

Safety warnings for charger

- Before charging, ensure your charger matches the local AC supply.
- Do not use in damp or wet conditions.
- Do not open or probe the charger.
- The charger is intended for indoor use only.
- Only use your charger to charge batteries of the type supplied with your power tool. Other batteries could explode, causing personal injury and property damage.
- Only two battery packs are allowed to be charged continuously, in order to prevent overheating of the charger. It is necessary to allow the charger to cool down before charging another battery.



Safety Information

Important - Please read these instructions fully before operating or maintaining

Safety warnings for battery packs

- When charging is complete, unplug the charger from the mains socket and remove the battery pack from the charger. Do not leave the battery pack in the charger.
- Never carry the charger by its cord or pull the cord to disconnect from the socket. Keep the cord away from heat, oil and sharp edges.
- Never attempt to charge non-rechargeable batteries.
- The cord of the charger is not changeable; do not continue to use it, if the cord is damaged.

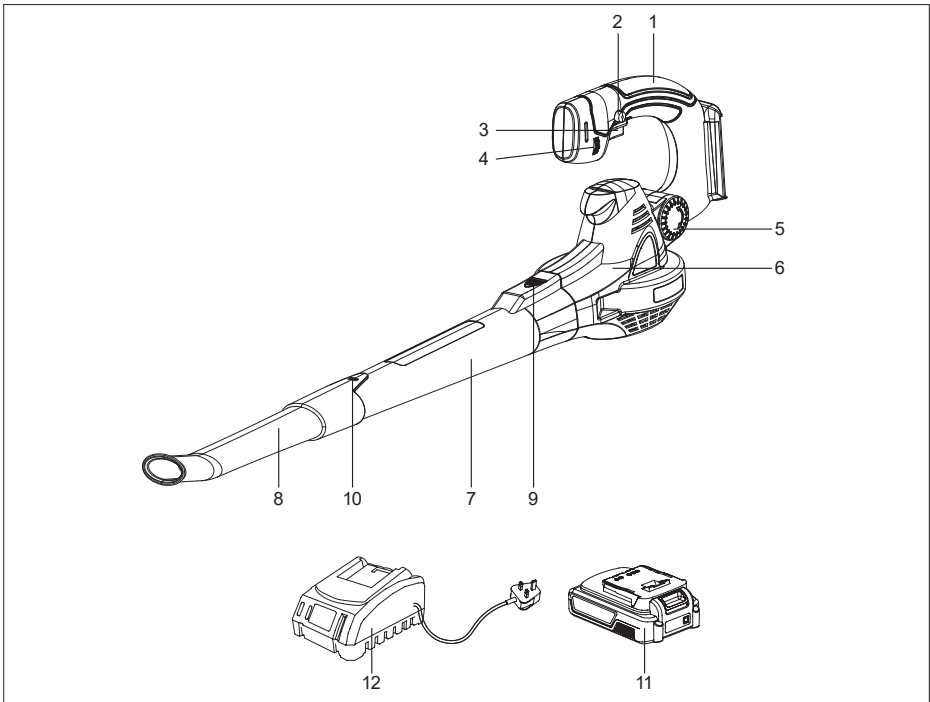
Service

- Have your power tool serviced by a qualified repair person using only identical replacement parts. This will ensure that the safety of the power tool is maintained.
- Never service damaged battery packs. Service of battery packs should only be performed by the manufacturer or authorized service providers

Part List

Parts description

- | | |
|---------------------------|----------------------------|
| 1. Handle | 7. Blower tube |
| 2. Lock on button | 8. Blower nozzle |
| 3. On/Off switch | 9. Blower tube lock button |
| 4. Variable speed control | 10. Nozzle tab |
| 5. Head adjustable button | 11. Battery pack |
| 6. Blower head | 12. Charger |

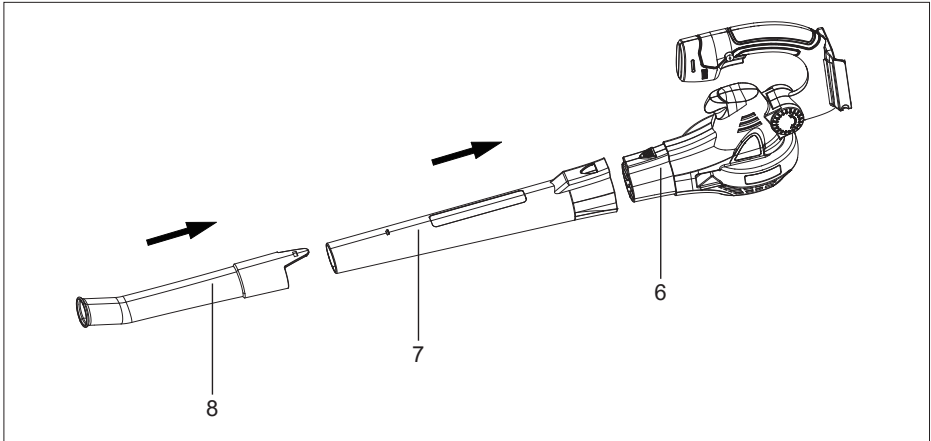


Preparing to assemble the blower

- Remove all parts of the cordless blower from the box and carefully remove all packaging.
Take care not to lose any instructions which may be affixed to the parts. These provide important information which will be required while attached the blower.
- Keep all packaging until the blower is fully assembled and has been operated successfully.
- Always recycle the packaging in accordance with local recycling schemes.

Assembly

Step 1 Blower tube assembly



First, fit the blow tube (7) to the blower head (6), then fit the high-speed nozzle (8) to the blow tube as shown in above fig. Check that both parts are firmly secured.

Preparation

Checking battery capacity

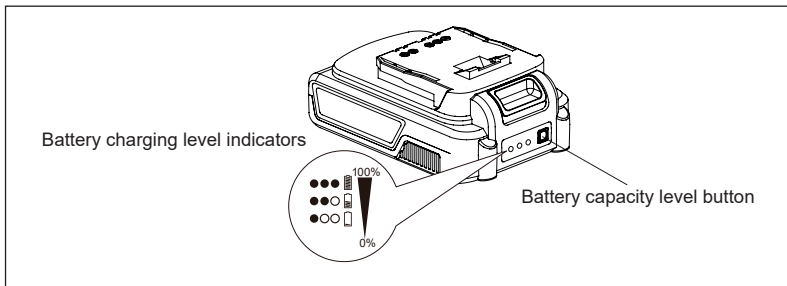


WARNING!

The charger and battery pack are specifically designed to work together so do not attempt to use any other devices. Never insert or allow metallic objects into your charger or battery pack connections; an electrical failure and hazard will occur.

The battery needs to be charged before first use and whenever it fails to produce sufficient power on jobs that were easily done before.

- Press the battery capacity level button to check the charging level of the battery pack. The battery capacity will be shown on the battery charging level indicators.

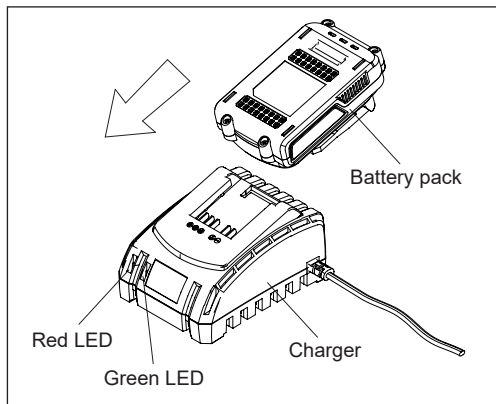


Battery charging level indicators	Battery capacity
●○○□	≤ 35% and need to be charged
●●○□	35-65%
●●●■	≥ 65%

Preparation

Charging the battery

- Connect the charger to a power supply. The red LED will illuminate.
- Slide the battery pack into the charger fully, the red indicator is on and the green indicator is flashing means the battery is in charging.
- Complete charging, the red LED is off and the green LED is on.
- Once the battery is fully charged, disconnect the charger from the mains and remove the battery pack from the charger.



LED Light on Charger (Red & Green)	Charger Status
■ □	Stand by
■ ■ (flashing)	In charging
□ ■	Battery pack is fully charged
■ ■ (flashing) □ (2 times/second)	Battery pack faulty
■ ■ (flashing) □ (1 time/second)	Battery pack overheat

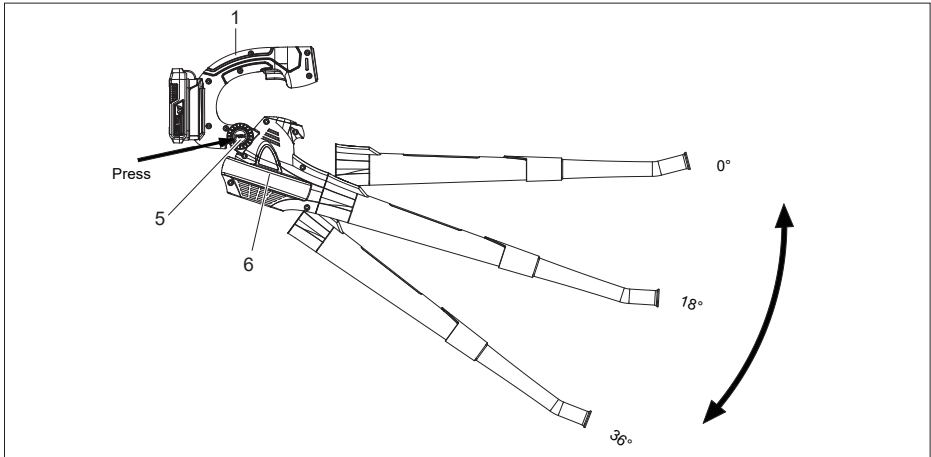
Note! It is not recommended to charge the battery pack immediately after using the machine. The battery pack should be cooled for a period of time.

Note! There will be different charging time for different capacity of the battery pack.

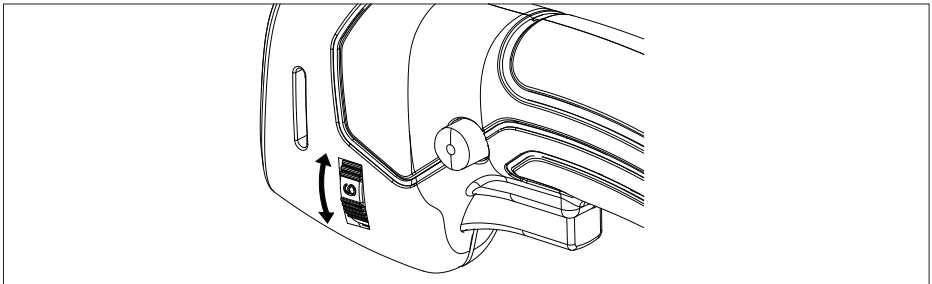
Preparation

Step 2 position the adjustable head

Hold the handle (1) tightly. Push the lock button (5) then rotate the blower head (6) to the desired position. Release the lock button and check that the blower head is locked in place. Note: The work head can be locked in one of three positions (0°, 18°, and 36°).



Step 3 setting the variable speed control



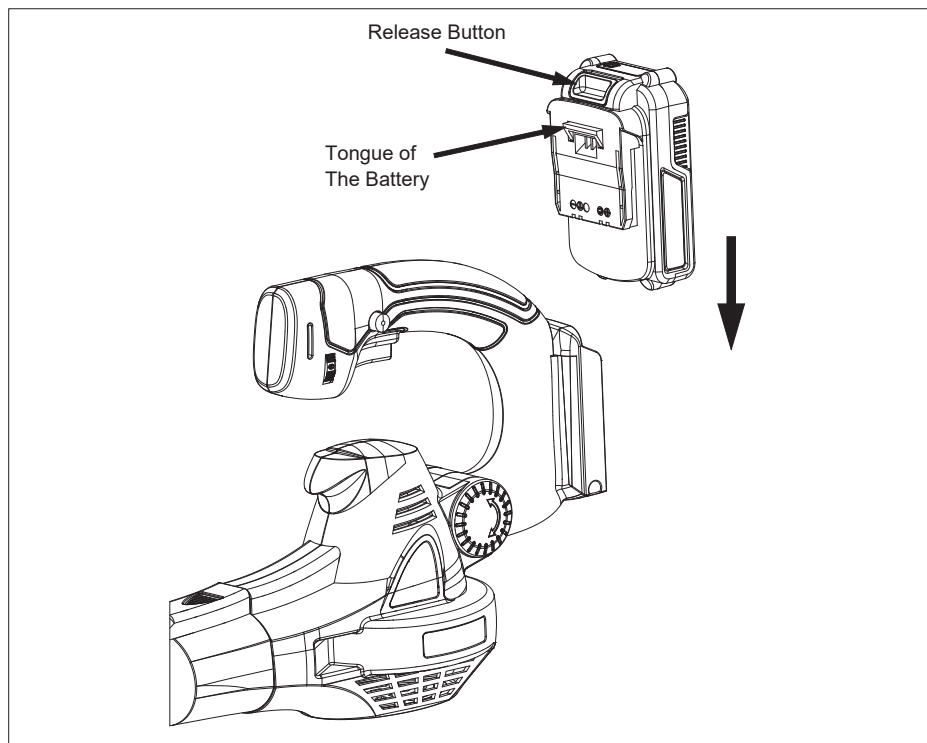
Use the variable speed control to set the optimal speed for the corresponding application.

Speed	Use
1-3	Small debris
3-6	Large piles of leaves, grass clippings, hedge trimmings

Not recommend to working with low speed for a long time, it may damage the blower.

Preparation

Step 4 battery assembly



Push the battery pack into the handle until the latch into place

Operation

Note:

- Assure the unit is not directed at anybody or any loose debris before starting the unit.
- Verify that the unit is in good working condition. Make sure the tubes and guards are in place and secure.
- If possible, loosen debris before blowing.
- Be aware of your surrounding when operating the blower. Watch out for children, pets, open windows, freshly washed cars etc and blow debris safely away.

Operating tips

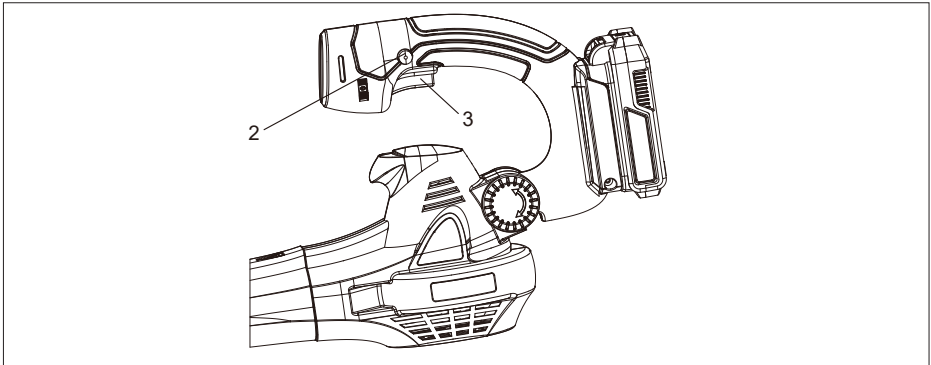
Hold the blower firmly. Sweep from side to side with the nozzle 5-10cm above the ground or floor. Slowly advance the unit, keeping the accumulated pile of debris in front of you. Most dry blowing operations are better suited to low speeds, rather than high. High speed blowing is a better way to move heavier items like large debris or gravel.

Air vents

Never cover air vents. Keep them free from obstructions and debris. They must always remain clear for proper motor cooling and optimum performance.

Operation

Step 1 On/Off operation

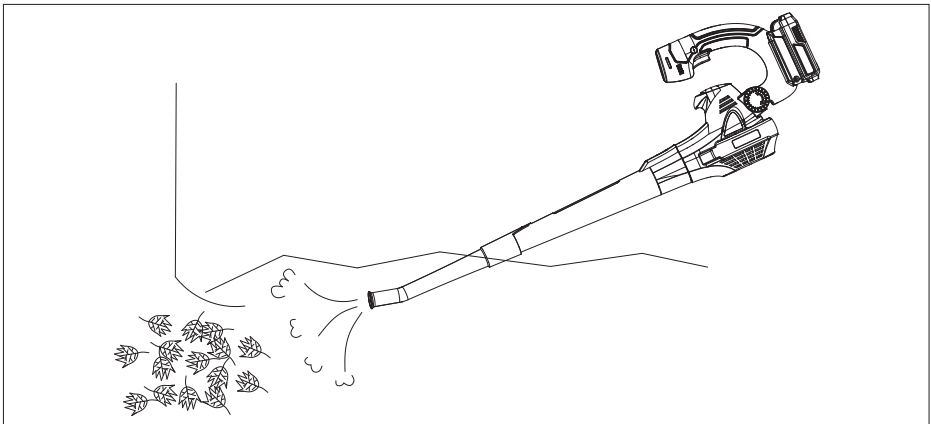


To start the blower, press the button 3.

To stop the blower, release the button 3.

The lock button (2) could be used for long time working. Press on/off switch (3) firstly and press the lock button (2), then the on/off switch (3) is locked and the blower will continuously work. Press the on/off switch (3) again, then the blower will stop.

Step 2 Use blower



Blow debris or grass clippings off of driveways, sidewalks, patios, parks, parking lots, etc.

Gather grass clippings, straw, or leaves into piles. Remove debris from corners, around joints, and between bricks.

Maintenance

Cleaning

- Remove the battery pack.
- Brush or blow dust and debris out of the air vents using compressed air or a vacuum. Keep the air vents free of obstructions, sawdust, and wood chips. Do not spray, wash, or immerse the air vents in water.
- Wipe off the housing and the plastic components using a moist, soft cloth. Do not use strong solvents or detergents on the plastic housing or plastic components. Certain household cleaners may cause damage, and may cause a shock hazard.

Battery maintenance

- Store the battery pack fully charged.
- Recharge the battery pack whenever there is a noticeable reduction in the performance. Do not allow the battery pack to become completely discharged.
- Do not recharge a battery pack that is already fully charged. Overcharging shortens battery life.
- Once the battery pack is fully charged, remove the battery from the charger and disconnect the charger from the outlet.
- Do not store the battery pack on the tool or in the charger.
- Recharge the battery at a temperature between 5°C and 50°C. If the battery pack is hot, allow it to cool down before recharging.

Charger maintenance

- Keep the charger clean and clear of debris. Do not allow foreign material into the recessed cavity or on the contacts. Wipe with a dry cloth. Do not use solvents, water, or place in wet conditions.
- Always unplug the charger when there is no battery pack in it.
- Give the batteries a full charge before placing in storage. Do not recharge a fully charged battery pack. Overcharging shortens the battery life.
- Recharge the battery pack whenever there is a noticeable reduction in the performance. Never let the batteries become completely discharged.
- Keep the charger stored in normal room temperature. Do not store it in excessive heat. Do not store in direct sunlight.
- Disconnect the charger from the AC power outlet when not in use and once battery has reached a full charge.

Technical Data

Technical data table

Model	MCLB18
Voltage	18V ---
No load speed	7000-13000/min
Air speed	64-192 km/h
A weighted sound pressure level	$L_{pA}=81.5\text{dB(A)}$ $K=3\text{dB(A)}$
Measured sound power level	87.79 dB(A) $K=1.17\text{dB(A)}$
Guaranteed sound power level	89dB(A)
Vibration	1.108 m/s^2 $K=1.5\text{m/s}^2$
Battery pack	
Model	B0P-SP07-20ZM
Voltage	18V ---
Battery type	Lithium-Ion
Battery capacity	2.0Ah
Fully charging time	approx. 1 hour
Charger	
Model	B0Q-SP06-20ZB
Input	220-240V~, 50/60Hz 65W
Output	20V --- 2.4A
Insulation protection class	II

Disposal and recycling



Recycle unwanted materials instead of disposing of them as waste. All tools, hoses and packaging should be sorted, taken to the local recycling centre and disposed of in an environmentally safe way.

Recycle rather than dispose of unwanted material in landfill whenever possible. The machine must be delivered in rigid packaging to avoid damage during transportation. The packaging and the machine itself are manufactured from recyclable materials and should be disposed of accordingly.

Only dispose of electrical/electronic/battery terms in separate collection schemes, which cater for the recovery and recycling of materials contained within. Your cooperation is vital to ensure the success of these schemes and for the protection of the environment.

Recycle packaging where facilities exist.

This symbol is known as the Crossed out Wheelie Bin Symbol. When this symbol is marked on a product or battery, it means that it should not be disposed of with your general household waste. Some chemicals contained within electrical/electronic products or batteries can be harmful to health.

Troubleshooting

Troubleshooting



Warning

Only perform the steps described within these instructions!

All further inspection, maintenance and repair work must be performed by an authorised service center or a similarly qualified specialist if you cannot solve the problem yourself!

Always turn off the machine and remove the plug before making any adjustment.

Problem	Possible Cause	Solution
Motor fails to start when power switch is turned on.	Battery is not secure.	To secure the battery pack, make sure the latches on the top of the battery pack snap into place.
	Battery is not charged.	Charge the battery pack according to the instructions included with your model.
Unit will not start.	Defective power switch.	If within warranty period return product to retailer of purchase.
Unit will not blow.	Blocked tube.	Clear the blockage.

Recycling and Disposal

Recycling and disposal



delivered and the product is functioning properly. Recycle the packaging afterwards.

Old products are potentially recyclable and do not, therefore, belong in your household waste. You are requested to assist us and our contribution to saving resources and protecting the environment by handing this product at an equipped collection centre.

Getting Help

Customer Helpline 0345 605 2062

Our dedicated UK based customer service centre is open 7 days a week to assist you with assembly, parts queries and technical support. We are open during office hours. Our experts are here to get you back enjoying your garden in no time.

Calling our service does not affect your statutory rights.
UK/N.I. 0345 605 2062

Guarantee

Dear Customer,

In the unlikely event that your device develops a fault, please contact our Customer service department on the telephone number shown below.

1. These guarantee terms cover additional guarantee rights and do not affect your statutory warranty rights. Claims must be accompanied by proof of purchase. This must be in the form of a sales receipt or bank statement and must show that the product has been purchased within 2 years prior to the claim, from the retailer that it was originally sold to.
2. Our guarantee covers problems caused by material or manufacturing defects, and will result in the repair of these defects or replacement of the device with a like for like or similar article. Please note that our devices have not been designed for use in commercial, trade or industrial applications. Consequently, the guarantee is invalidated if the equipment is used in commercial, trade or industrial applications or for other equivalent activities.
3. The following are also excluded from our guarantee:
 - A. Faults due to accidents, customer misuse or unauthorized repairs
 - B. Failure due to lack of routine maintenance.
 - C. Failure as a result of not using the equipment in accordance with the manual and safety instructions
4. The guarantee is valid for a period of 2 years starting from the purchase date of the device. Guarantee claims should be submitted before the end of the guarantee period within two weeks of the defect being noticed. No guarantee claims will be accepted after the end of the guarantee period. The original guarantee period remains applicable to the device even if repairs are carried out or parts are replaced. In such cases, the work performed or parts fitted will not result in an extension of the guarantee period, and no new guarantee will become active for the work performed or parts fitted. The also applies when an on-site service is used.