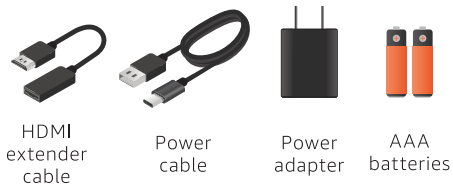


MEET YOUR FIRE TV STICK 4K



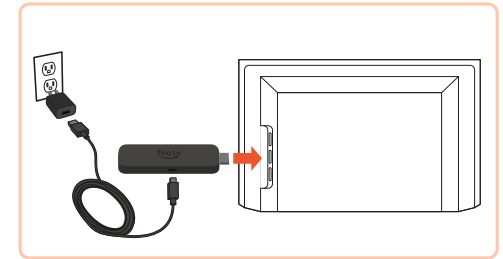
Also included:



MEET YOUR ALEXA VOICE REMOTE

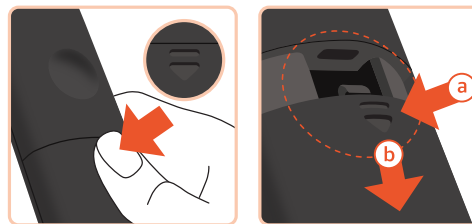


CONNECT YOUR FIRE TV STICK 4K



- 1 Plug your Fire TV Stick 4K into your TV's HDMI port and insert one end of the power cable into your stick's power port.
- 2 Insert the other end of the power cable into the power adapter, then plug the adapter into a power outlet.

SET UP YOUR REMOTE



- 1 Press and hold your thumb on the arrow to release the latch.
- 2 Make sure you **a** press the arrow firmly to release the latch as you **b** slide the cover off.
- 3 Insert included batteries.

Note: If it didn't pair, press and hold Home (Ⓞ) for 10 seconds.

HELPFUL TIPS



If your new remote doesn't connect, remove and reinsert its batteries.

Replace used batteries with new 1.5V alkaline or 1.2V NiMH rechargeable AAA batteries.

amazon alexa

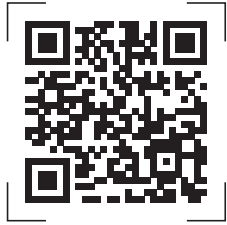
Use your Alexa Voice Remote with your Fire TV Stick 4K to search for and enjoy thousands of movies, TV shows, apps, and games.

Optional: use the included HDMI extender if it's difficult to plug your Fire TV Stick 4K into your TV's HDMI port.

- 3 Turn on your TV and switch to the appropriate HDMI input.

Tip: use the remote that came with your TV to select the HDMI source or input.

**SCAN FOR MORE HELP
AND
ACCESSIBLE INSTRUCTIONS**



Scan the QR code or visit:
amazon.com/setup/firetvstick4k
