

cookworks

Juicer

Model No. JE3700-GS



Care & Instruction Manual

For household and indoor use only

Please read these instructions before use and retain for future reference



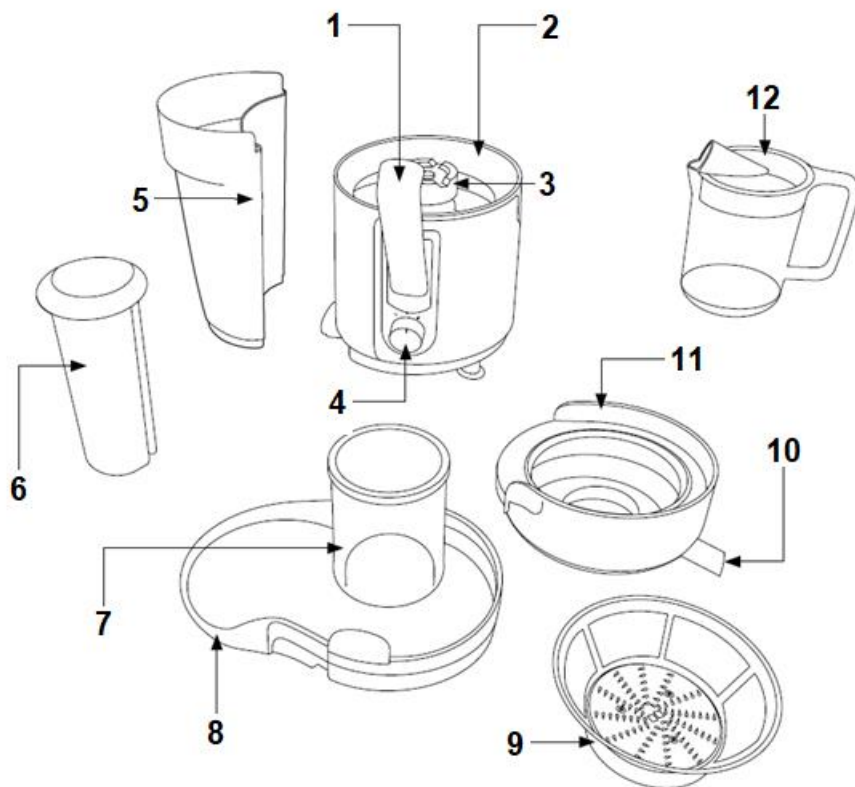
ELECTRICAL SAFETY

- You should only plug the appliance into a AC 220-240V, 50-60Hz supply. Connecting it to other power sources may damage the appliance and will invalidate the guarantee.
- Switch off and unplug when not in use and before assembling, cleaning or dismantling the appliance.
- This appliance shall not be used by children. Keep the appliance and its cord out of reach of children.
- This appliance can be used by persons with reduced physical, sensory or mental capabilities or lack of experience and knowledge if they have been given supervision or instruction concerning use of the appliance in a safe way and understand the hazards involved.
- Children shall not play with the appliance.
- Keep motor housing, cable, and plug dry and away from areas where it is likely to get splashed. Never immerse in water.
- Do not cover or block the ventilation holes.
- Do not pull on the cable to disconnect from the mains supply.
- Do not operate the appliance if damaged or after it malfunctions. In the event the supply cord is damaged, in order to avoid a hazard, it must only be replaced by a qualified service engineer, with a suitably approved part.
- This appliance must be positioned so that the plug is accessible and the plug socket is within easy reach of the power cord.

WARNING!

- This appliance is intended exclusively for use in domestic households. It is not suitable for commercial use.
- Always unplug the motor housing if unattended and before assembling, disassembling or cleaning.
- Only use with the parts supplied and fully assembled.
- Do not use the appliance if the rotating sieve is damaged.
- Do not cover the juicer and allow the motor housing to cool fully before storing.
- Do not leave unattended during use.
- The blades of the rotating sieve are sharp, take care when removing, emptying the juicer and during cleaning. This appliance can cause personal injury if misused.
- Never place hands or utensils inside the feed tube whilst the juicer is in use. Only use the pusher provided.
- Do not attempt to operate the juicer without the lid in place.

PARTS



- | | |
|------------------------------|--------------|
| 1. Locking clip | 7. Feed tube |
| 2. Motor housing | 8. Cover |
| 3. Drive spindle | 9. Sieve |
| 4. Speed switch | 10. Spout |
| 5. Pulp collection container | 11. Bowl |
| 6. Pusher | 12. Jug |

IMPORTANT:

This juicer is equipped with a safety feature and will not operate unless the lid is fully secured using the locking clip.

ASSEMBLY

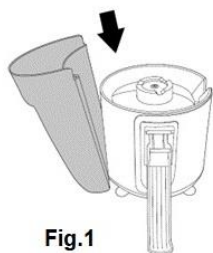


Fig.1

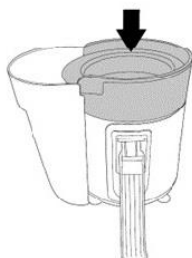


Fig.2

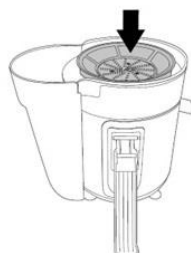


Fig.3

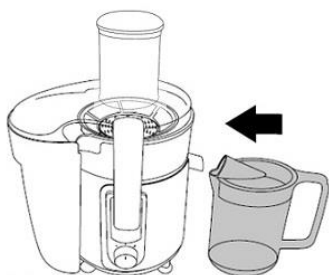


Fig.7

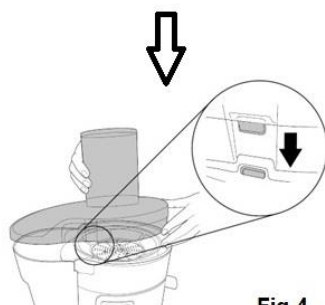


Fig.4

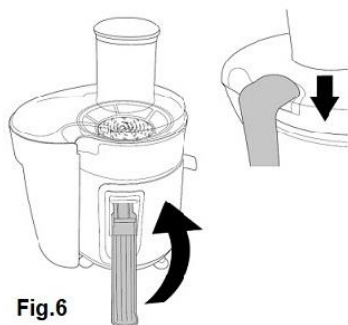


Fig.6

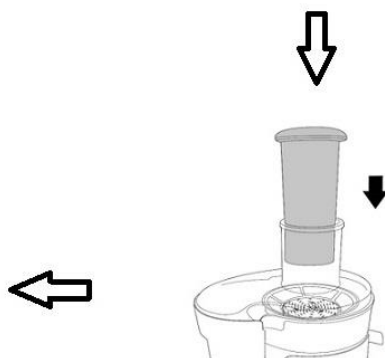


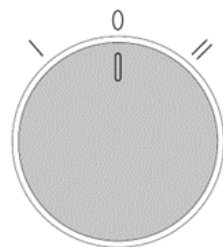
Fig.5

ASSEMBLY (CONTINUED)

1. Dismantle and clean thoroughly before first use – see cleaning section.
2. Place the motor housing onto a stable, flat surface.
3. Tilt the pulp collection container and align with the lug at the bottom of the motor housing (Fig. 1).
4. Fit the bowl onto the top of the motor housing. Ensure the lip of the bowl hooks over the pulp collection container (Fig. 2).
5. Grip the side of the sieve and slot it onto the drive spindle. Once they are aligned, press downward on the sieve until the sieve engages with the spindle (Fig. 3)
6. Fit the cover onto the top of the bowl; ensure the tabs on the cover lid on the tab on the bowl and then insert the pusher (Figs. 4 & 5).
7. Lock the cover into position by fitting the locking clip into position over the top of the cover (Fig. 6). **Ensure that clip is correctly fitted as this is an interlock device.**
8. Fit the jug and position the jug under the spout (Fig. 7).

TO USE

1. Place the assembled juicer on a stable surface, check that the switch is in the off (0) position, fully unwind the cable and plug in.
2. Check that all parts are secure and that the locking clip is fully clipped into position. **The juicer will not operate if the clip is not fully closed.**
3. Prepare the food (e.g. remove the peel and pips from citrus fruit, cores from pineapple etc.) and cut the fruit into sizes that can pass down the feed tube.
4. Using the speed switch, select the appropriate speed for your ingredients. A slower speed will be obtained by selecting the lower speed setting (I) and a faster speed by selecting the higher setting (II). Use the slower speed setting for soft fruits and vegetables (e.g. oranges and watermelons) and the faster speed settings for hard fruits and vegetables (e.g. carrots).
5. Drop the fruit pieces down the feed tubes and if necessary, gently push them down using the pusher supplied. Never place hands or utensils inside the feed tube whilst the juicer is in use. Only use the pusher provided. Ensure all loose articles (e.g. necklaces etc.), clothing (ties, scarves, sleeves etc.) are kept away from the feed tube.
6. Extract juice for a maximum of 7 minutes of continuous use. If longer is required rest the juicer for 5 minutes before using again.
7. After a total of 2 x 7 minutes extraction cycles, the juicer should be rested for 30 minutes and allowed to cool to room temperature.
8. Do not over fill the feed tube. If food becomes stuck in the feed tube, use the pusher or another piece of fruit to dislodge it. If this is not possible, switch off the juicer and unplug from the mains supply before dismantling.



TO USE (CONTINUED)

9. When the juice jug or the pulp collector is full, turn the speed switch to the off (0) position and empty the container before continuing to extract further.
10. To stop or interrupt the juicing process switch the appliance off by turning the speed control switch to '0' or by turning off at the mains.

Notes:

- Avoid using hard foods in the juicer as they may damage the rotating sieve.
- Do not run the juicer empty for more than a few seconds.

JUICING TIPS

- For the best taste and nutritional value use fresh fruit and do not store the juice for prolonged periods.
- Push down slowly on the pusher to extract the maximum quantity of juice.
- Peel foods with thick skins (e.g. citrus fruit), remove seeds and pips (e.g. melons) where possible and hard cores (e.g. pineapple.) to prevent the sieve becoming clogged.
- Fruits with high starch or fibre content (e.g. bananas, mangos etc.) are not recommended for this juicer as they yield little juice or clog up the sieve.

CLEANING

Clean the juicer after each use.

1. When cleaning, switch off and unplug.
2. Dismantle and remove all loose parts from the motor housing. Take care when handling the sieve as it has sharp blades.
3. Wipe the outside of the motor housing with a damp cloth; do not use detergent or abrasives as these may scratch the surface. Never immerse the motor housing, cable or plug in water.
4. Empty the pulp container; rinse the sieve under running water using the cleaning brush to remove debris from the sieve.
5. Wash all loose parts in hot water with a little washing up liquid. Rinse and wipe dry.

Notes:

You can clean all loose parts of this appliance in a dishwasher, though this may cause the finish to dull over time.

TECHNICAL SPECIFICATION

Cookworks Juicer	
Model	JE3700-GS
SKU No.	144246641
Rated Voltage & Frequency	AC 220 – 240V, 50 – 60Hz
Rated Power Input	600 – 800W
Maximum work time	7 minutes
Class rating	II (double insulated)
BS 1362 fuse	5A
Product dimensions (external)	289 x 216 x 395 mm
Product weight (net)	3.23 kg approx.



RECYCLING ELECTRICAL PRODUCTS



You should now recycle your waste electrical goods and in doing so help the environment.



This symbol means an electrical product should not be disposed of with normal household waste. Please ensure it is taken to a suitable facility for disposal when finished with.

Visit www.recycle-more.co.uk, click on “bank locator” and enter your postcode to find your nearest recycling site.

PLUG / WIRING ADVICE

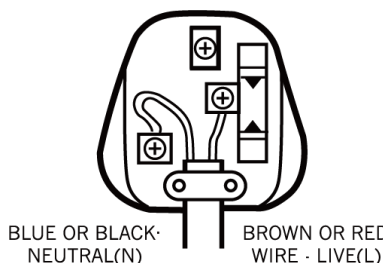
The wires in this mains lead are coloured in accordance with the following UK electrical code: BLUE = NEUTRAL
 BROWN = LIVE

Non-rewireable plug

This appliance may be fitted with a “non-rewireable” plug. If you need to change the fuse in a “non-rewireable” plug, the fuse cover must be refitted. If the fuse cover is lost or damaged, the appliance must not be used.

Rewireable plug

The colours of the wires in the mains lead of this appliance may not correspond with the coloured markings identifying the terminals in a rewireable plug. **Rewireable plugs should only be replaced by a suitably competent person. If in doubt, consult a qualified electrician.**



The BLUE wire must be connected to the terminal marked with the letter N

The BROWN wire must be connected to the terminal marked with the letter L

We care about our quality and what you think, If you have any comments, good and bad, Please call our Careline **0800 636 262**, or visit **www.sainsburys.co.uk**. Your statutory rights are not affected.

Produced in China for Argos Limited and Sainsbury's Supermarkets Ltd, London EC1N 2HT, UK.
Argos (N.I.) Ltd and Sainsbury's (NI) Ltd, Forestside Shopping Centre, Upper Galwally, Belfast, BT8 6FX, UK.